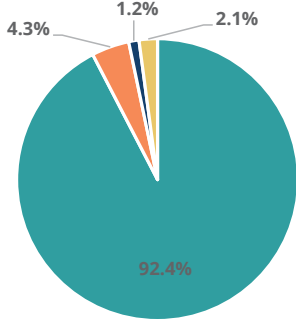


Family & Community

Rank: 28

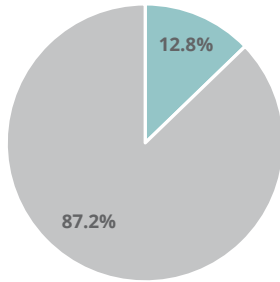
Putnam Rank: 24

Child Population by Race

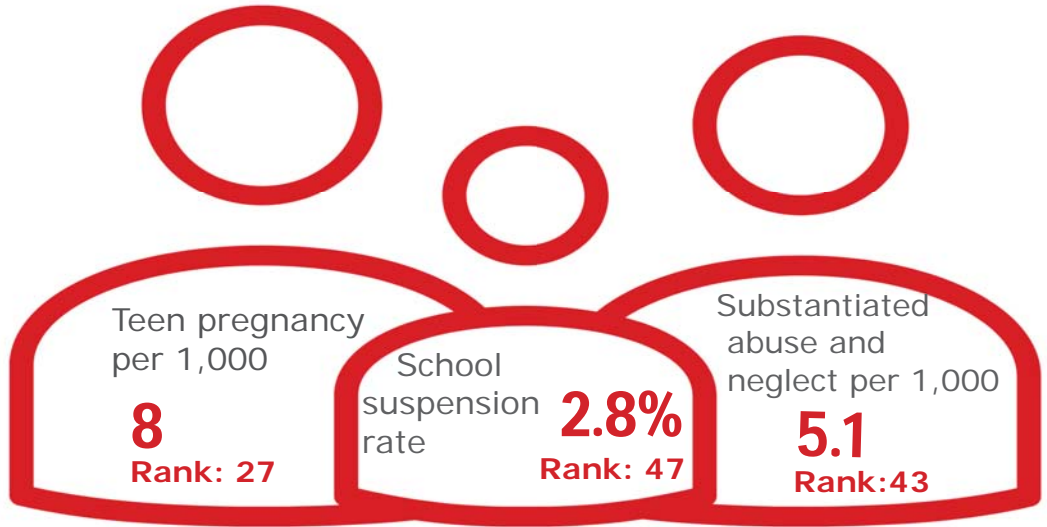


- White, Including Hispanic
- Black, Including Hispanic
- Native American/Alaskan
- Asian/Pacific Islander

Child Population by Hispanic Ethnicity



- Hispanic, All Races
- Non-Hispanic



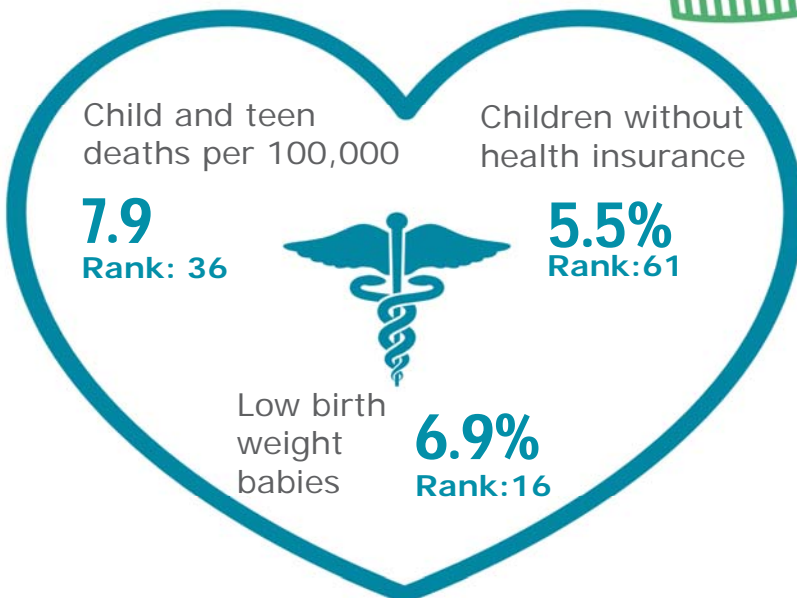
Economic Well-Being

Rank: 29



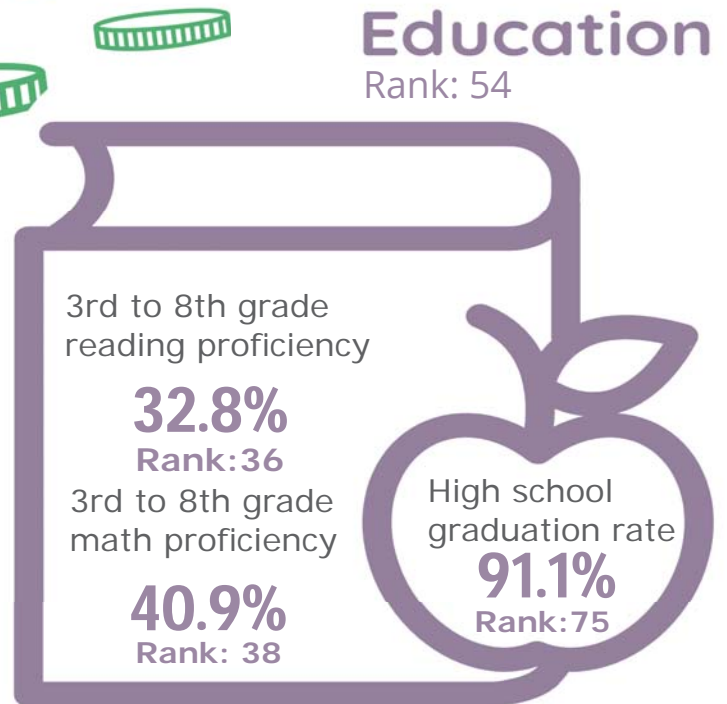
Health

Rank: 27








Education

Rank: 54



Putnam County

Published 1/2021

Demographics 	Putnam County		Tennessee Rate	County Rate as a percentage of State Rate	County Rank
	Number	Rate			
Total population (state comparison is number not rate)	78,840	NA	6,769,975	1.2%	17
Population under 18 years of age	16,910	21.4%	22.2%	96.6%	39
Economic Well-Being 	Putnam County		Tennessee Rate	County Rate as a percentage of State Rate	County Rank
	Number	Rate			
Youth unemployment	377	25.1%	11.2%	224.1%	90
Per capita personal income (state is dollars not rate)	\$39,509	NA	\$46,900	84.2%	32
Median home sales price (state is dollars not rate)	\$175,000	NA	\$146,000	119.9%	20
Children receiving Families First grants (TANF)	428	2.5%	2.7%	93.3%	41
Children receiving SNAP	4,570	27.0%	28.2%	96.0%	26
Children under five receiving WIC	1,575	34.8%	30.6%	113.7%	37
Education 	Putnam County		Tennessee Rate	County Rate as a percentage of State Rate	County Rank
	Number	Rate			
School age special education services	1,523	14.0%	12.3%	113.6%	65
TEIS participation (per 1,000 in age group)	95	34.66	27.9	124.3%	59
Cohort high school dropouts	58	6.9%	8.3%	83.1%	74
Event high school dropouts	70	2.1%	2.2%	95.5%	87
Economically disadvantaged students	6,022	54.8%	65.1%	84.2%	11
School expulsions (per 1,000 students)	0	0.0	2.0	0.0%	1
Chronic absenteeism	1,405	12.7%	13.3%	95.5%	47
Young adult college enrollment/completion rate	NA	63.4%	62.5%	101.4%	32
Health 	Putnam County		Tennessee Rate	County Rate as a percentage of State Rate	County Rank
	Number	Rate			
Neonatal abstinence syndrome (per 1,000 live births)	22	25.29	11.5	220.2%	43
Births to mothers who smoked during pregnancy	155	17.8%	12.1%	147.1%	30
Children on TennCare (Medicaid)	9,213	43.8%	44.7%	97.8%	23
Total TennCare (Medicaid) enrollees	16,466	20.9%	19.9%	105.0%	37
Births covered by TennCare (Medicaid)	629	72.3%	65.5%	110.4%	27
Children qualified for Medicaid/CHIP but uninsured	716	7.0%	6.5%	107.7%	77
Infant mortality (per 1,000 live births)	2	2.30	6.9	33.3%	21
Neonatal death (per 1,000 live births)	1	1.10	4.4	25.0%	33
Child deaths (per 100,000 children age 1 to 14)	1	7.90	20.5	38.5%	36
Teen violent deaths (per 100,000 children age 15 to 19)	1	17.00	55.7	30.5%	37
Adequate prenatal care	615	70.7%	58.8%	120.2%	14
Children under age six screened for lead poisoning	258	4.8%	17.1%	27.8%	95
Public school students measured as overweight/obese	NA	38.1%	39.3%	96.9%	20
Teens with STDs (per 1,000 children age 15 to 17)	27	8.2	19.0	43.2%	12
Medical doctors by county (per 100,000 residents)	163	206.7	229.1	90.2%	8
Dentists by county (per 100,000 residents)	32	40.6	50.1	81.1%	19
Family & Community 	Putnam County		Tennessee Rate	County Rate as a percentage of State Rate	County Rank
	Number	Rate			
Reported child abuse cases	915	5.4%	4.7%	116.0%	46
Commitment to state custody (per 1,000 children)	93	4.8	4.1	117.3%	43
Remaining in state custody (per 1,000 children)	114	5.8	5.2	112.6%	44
Juvenile court referrals	456	2.7%	3.5%	76.3%	26
Recorded marriages (per 1,000 residents)	439	5.6	8.0	70.0%	72
Recorded divorces (per 1,000 residents)	283	3.6	3.5	102.9%	48

Putnam County

At 24th, Putnam County ranks just at the top fourth of Tennessee counties in child well-being. The county's best rankings include a relatively low rate of children living in poverty. Though 18.7 percent is still higher than one would hope, it is better than many other counties in the state. Putnam county also had a relatively low rate of babies born at a low birth weight. The county's biggest opportunities for improvement include a low high school graduation rate and relatively high housing costs.

Additional strengths include below-average rates of child and teen deaths and low rates of pregnancy among girls age 15-17.

Additional challenges include a high percentage of children without health insurance and a below-average house hold income.

Policy/Practice/Program Options to Improve Outcomes. Many of these policies have multiple models for delivery, including public-private partnership and non-profit leadership.

- Making high school students aware of the community college and technical school benefits available to them through Tennessee Promise can encourage on-time high school graduation.
- Pro-active housing policy that helps ensure affordable housing is available for people to live where they work can improve negative outcomes related to high housing costs.
- Most uninsured children in Tennessee qualify for either TennCare or CoverKids, so high rates of uninsured children can be improved with outreach to make sure that families are aware of these insurance opportunities. According to Census Bureau estimates, Putnam County has over 700 children who qualify for these health insurance programs but who nonetheless lack insurance.
- With a low median household income and high rates of child poverty, improving outreach to those who may qualify to receive SNAP, WIC and TennCare benefits to be sure they are aware of these services can help ensure basic needs are met. Additionally, nutrition programs that provide food for school-age children to take home can contribute to food security. Expanding services through Family Resource Centers can also help reach these vulnerable populations.