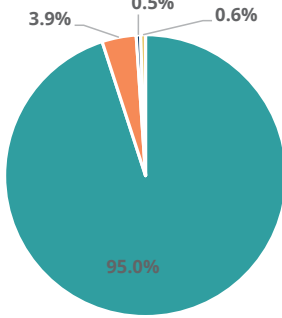


# Family & Community

Rank: 69

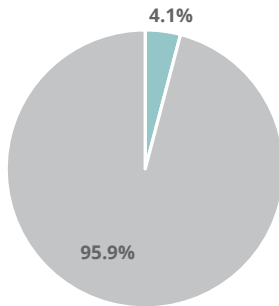
## Perry Rank: 56

Child Population by Race

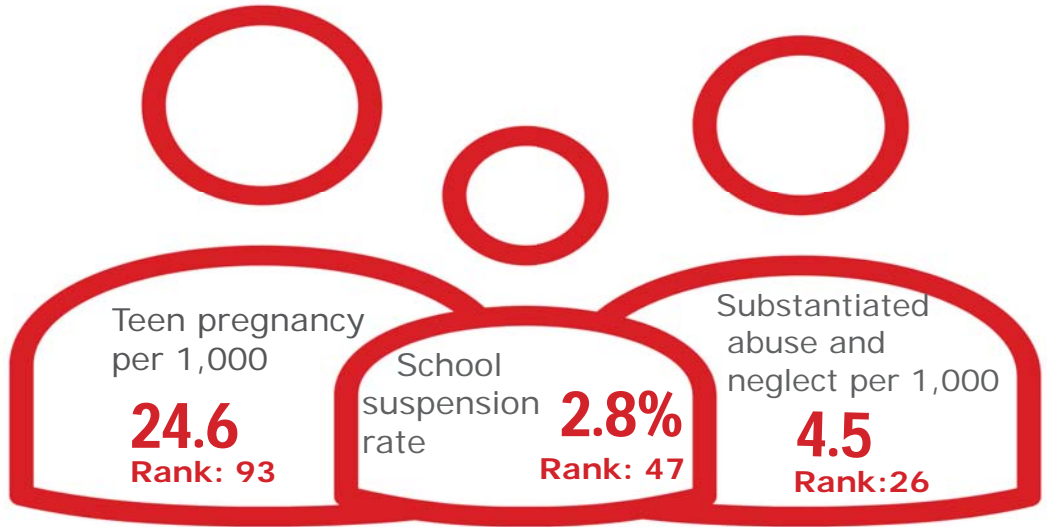


- White, Including Hispanic
- Black, Including Hispanic
- Native American/Alaskan
- Asian/Pacific Islander

Child Population by Hispanic Ethnicity



- Hispanic, All Races
- Non-Hispanic



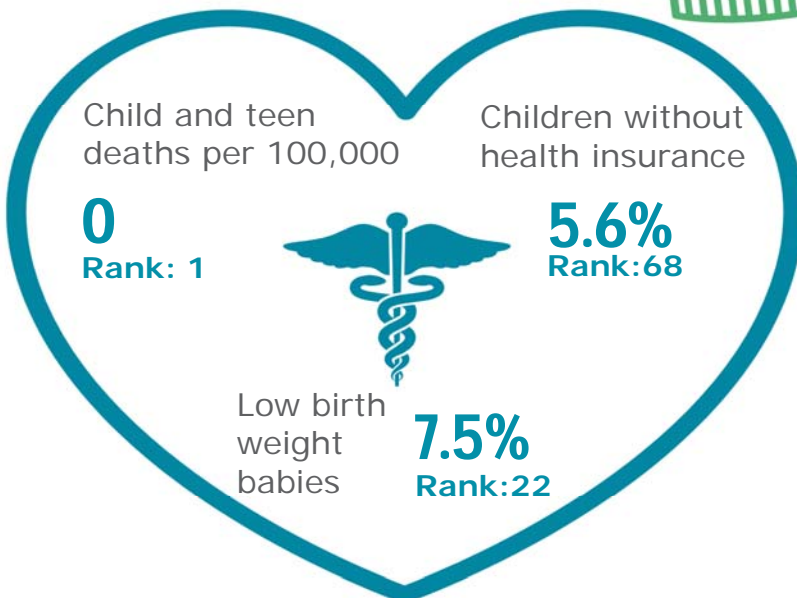
## Economic Well-Being

Rank: 44



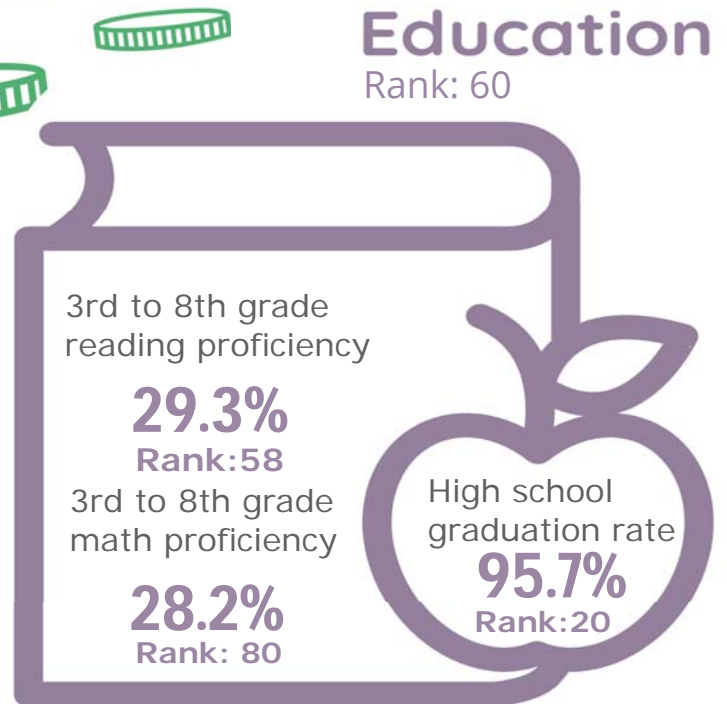
## Health

Rank: 30








## Education

Rank: 60



# Perry County

Published 1/2021

Demographics 	Perry County		Tennessee Rate	County Rate as a percentage of State Rate	County Rank
	Number	Rate			
Total population (state comparison is number not rate)	8,057	NA	6,769,975	0.1%	89
Population under 18 years of age	1,771	22.0%	22.2%	99.0%	29
Economic Well-Being 	Perry County		Tennessee Rate	County Rate as a percentage of State Rate	County Rank
	Number	Rate			
Youth unemployment	28	24.6%	11.2%	219.6%	89
Per capita personal income (state is dollars not rate)	\$34,268	NA	\$46,900	73.1%	61
Median home sales price (state is dollars not rate)	\$80,000	NA	\$146,000	54.8%	90
Children receiving Families First grants (TANF)	35	2.0%	2.7%	73.6%	18
Children receiving SNAP	529	29.9%	28.2%	106.0%	42
Children under five receiving WIC	184	36.2%	30.6%	118.3%	42
Education 	Perry County		Tennessee Rate	County Rate as a percentage of State Rate	County Rank
	Number	Rate			
School age special education services	152	15.0%	12.3%	122.1%	77
TEIS participation (per 1,000 in age group)	5	16.39	27.9	58.8%	7
Cohort high school dropouts	1	1.2%	8.3%	14.5%	8
Event high school dropouts	1	0.3%	2.2%	13.6%	8
Economically disadvantaged students	705	69.9%	65.1%	107.4%	52
School expulsions (per 1,000 students)	0	0.0	2.0	0.0%	1
Chronic absenteeism	93	9.3%	13.3%	69.9%	18
Young adult college enrollment/completion rate	NA	87.7%	62.5%	140.3%	1
Health 	Perry County		Tennessee Rate	County Rate as a percentage of State Rate	County Rank
	Number	Rate			
Neonatal abstinence syndrome (per 1,000 live births)	0	0.00	11.5	0.0%	1
Births to mothers who smoked during pregnancy	21	19.6%	12.1%	162.0%	44
Children on TennCare (Medicaid)	1,029	50.4%	44.7%	112.6%	44
Total TennCare (Medicaid) enrollees	1,854	23.0%	19.9%	115.6%	54
Births covered by TennCare (Medicaid)	68	63.6%	65.5%	97.1%	12
Children qualified for Medicaid/CHIP but uninsured	76	6.1%	6.5%	93.8%	45
Infant mortality (per 1,000 live births)	0	0.00	6.9	0.0%	1
Neonatal death (per 1,000 live births)	0	0.00	4.4	0.0%	1
Child deaths (per 100,000 children age 1 to 14)	0	0.00	20.5	0.0%	1
Teen violent deaths (per 100,000 children age 15 to 19)	1	219.80	55.7	394.6%	92
Adequate prenatal care	57	53.3%	58.8%	90.6%	81
Children under age six screened for lead poisoning	116	19.0%	17.1%	111.3%	38
Public school students measured as overweight/obese	NA	27.9%	39.3%	71.0%	2
Teens with STDs (per 1,000 children age 15 to 17)	<5	*	19.0	#VALUE!	*
Medical doctors by county (per 100,000 residents)	3	37.2	229.1	16.3%	63
Dentists by county (per 100,000 residents)	1	12.4	50.1	24.8%	83
Family & Community 	Perry County		Tennessee Rate	County Rate as a percentage of State Rate	County Rank
	Number	Rate			
Reported child abuse cases	104	5.9%	4.7%	125.8%	60
Commitment to state custody (per 1,000 children)	14	7.2	4.1	176.5%	73
Remaining in state custody (per 1,000 children)	16	8.2	5.2	157.9%	65
Juvenile court referrals	0	0.0%	3.5%	0.0%	1
Recorded marriages (per 1,000 residents)	45	5.6	8.0	70.0%	72
Recorded divorces (per 1,000 residents)	15	1.9	3.5	54.3%	4

## Perry County

At 56<sup>th</sup>, Perry County is in the bottom half of Tennessee counties in child well-being. The county's best rankings include no child and teen deaths in 2017 and the lowest housing costs in the state. The county's biggest opportunities for improvement come from its high rates of pregnancy among girls age 15 to 17 and low percentage of students grades 3<sup>rd</sup> to 8<sup>th</sup> rated proficient on TNReady math tests.

Additional strengths include a strong graduation rate and a relatively low rate of substantiated cases of abuse or neglect.

Additional challenges include a low median household income, the fact that over 1 in 4 of the county's children live in poverty and a relatively high rate of children who lack health insurance.

*Policy/Practice/Program Options to Improve Outcomes.* Many of these policies have multiple models for delivery, including public-private partnership and non-profit leadership.

- Comprehensive sex education classes that include both encouragement of abstinence and information on birth control have been shown to reduce the number of teen pregnancies.
- Expanding pre-K access and increasing STEM opportunities in elementary and middle schools can help improve 3<sup>rd</sup> to 8<sup>th</sup> grade math proficiency.
- With a low median household income and high rate of child poverty, improving outreach to those who may qualify to receive SNAP, WIC and TennCare benefits to be sure they are aware of these services can help ensure basic needs are met. Additionally, nutrition programs that provide food for school-age children to take home can contribute to food security. Expanding services through Family Resource Centers can also help reach these vulnerable populations.
- Most uninsured children in Tennessee qualify for either TennCare or CoverKids, so high rates of uninsured children can be improved with outreach to make sure that families are aware of these insurance opportunities. According to Census Bureau estimates, Perry County has almost 70 children who qualify for these health insurance programs but who nonetheless lack insurance.