

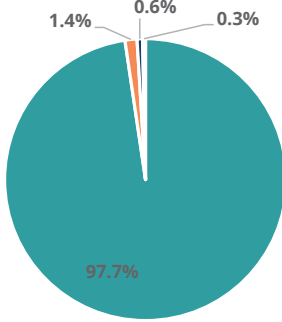


Family & Community

Rank: 27

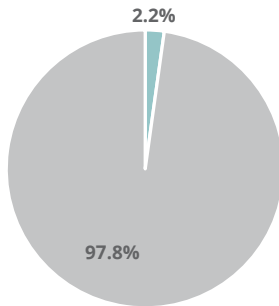
Morgan Rank: 66

Child Population by Race

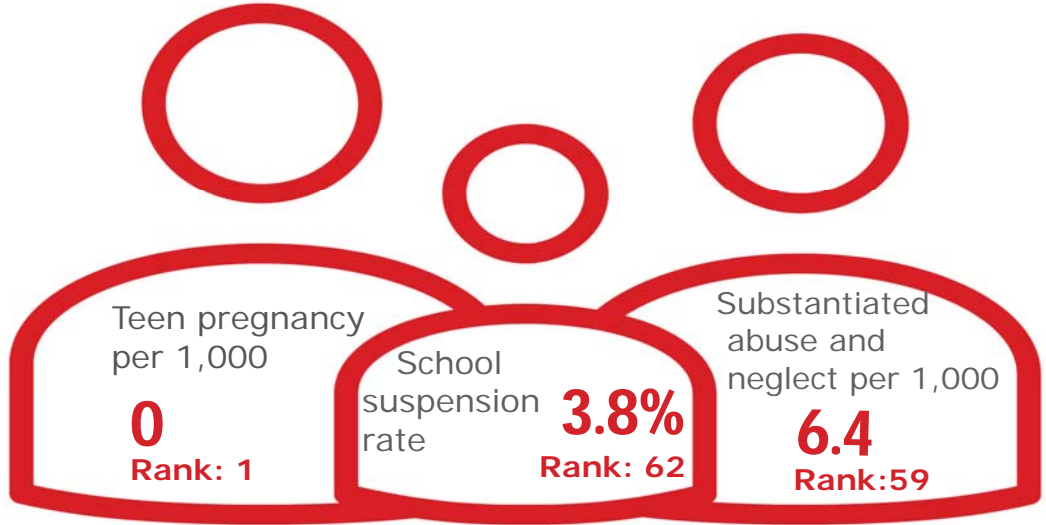


- White, Including Hispanic
- Black, Including Hispanic
- Native American/Alaskan
- Asian/Pacific Islander

Child Population by Hispanic Ethnicity



- Hispanic, All Races
- Non-Hispanic



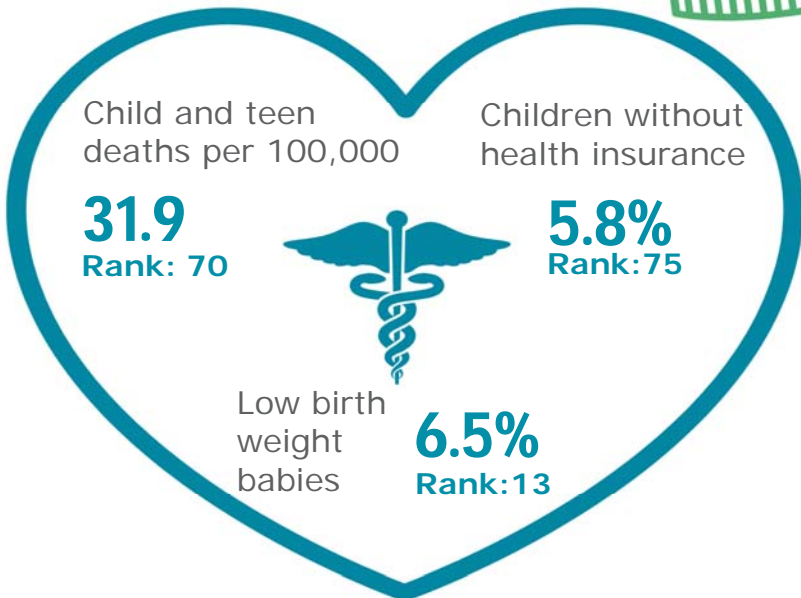
Economic Well-Being

Rank: 68



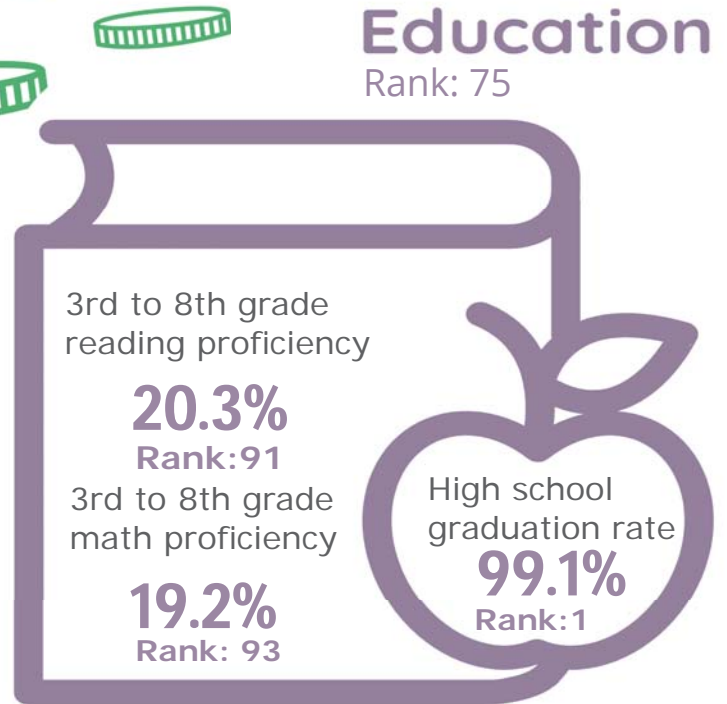
Health

Rank: 54








Education

Rank: 75



Morgan County

Published 1/2021

Demographics 	Morgan County		Tennessee Rate	County Rate as a percentage of State Rate	County Rank
	Number	Rate			
Total population (state comparison is number not rate)	21,572	NA	6,769,975	0.3%	64
Population under 18 years of age	4,069	18.9%	22.2%	85.0%	83
Economic Well-Being 	Morgan County		Tennessee Rate	County Rate as a percentage of State Rate	County Rank
	Number	Rate			
Youth unemployment	40	9.7%	11.2%	86.6%	34
Per capita personal income (state is dollars not rate)	\$29,380	NA	\$46,900	62.6%	90
Median home sales price (state is dollars not rate)	\$123,000	NA	\$146,000	84.2%	63
Children receiving Families First grants (TANF)	113	2.8%	2.7%	102.9%	50
Children receiving SNAP	1,422	34.9%	28.2%	124.0%	72
Children under five receiving WIC	438	42.5%	30.6%	138.9%	58
Education 	Morgan County		Tennessee Rate	County Rate as a percentage of State Rate	County Rank
	Number	Rate			
School age special education services	409	14.3%	12.3%	116.5%	69
TEIS participation (per 1,000 in age group)	22	35.26	27.9	126.4%	62
Cohort high school dropouts	2	0.9%	8.3%	10.8%	4
Event high school dropouts	2	0.2%	2.2%	9.1%	5
Economically disadvantaged students	2,519	88.1%	65.1%	135.3%	80
School expulsions (per 1,000 students)	0	0.0	2.0	0.0%	1
Chronic absenteeism	144	5.0%	13.3%	37.6%	1
Young adult college enrollment/completion rate	NA	57.7%	62.5%	92.3%	58
Health 	Morgan County		Tennessee Rate	County Rate as a percentage of State Rate	County Rank
	Number	Rate			
Neonatal abstinence syndrome (per 1,000 live births)	8	40.00	11.5	348.4%	51
Births to mothers who smoked during pregnancy	56	28.0%	12.1%	231.4%	89
Children on TennCare (Medicaid)	2,393	49.5%	44.7%	110.6%	40
Total TennCare (Medicaid) enrollees	4,331	20.1%	19.9%	100.9%	28
Births covered by TennCare (Medicaid)	178	89.0%	65.5%	136.0%	87
Children qualified for Medicaid/CHIP but uninsured	193	6.9%	6.5%	106.2%	73
Infant mortality (per 1,000 live births)	2	10.00	6.9	144.9%	78
Neonatal death (per 1,000 live births)	0	0.00	4.4	0.0%	1
Child deaths (per 100,000 children age 1 to 14)	1	31.90	20.5	155.6%	70
Teen violent deaths (per 100,000 children age 15 to 19)	0	0.00	55.7	0.0%	1
Adequate prenatal care	135	67.5%	58.8%	114.8%	30
Children under age six screened for lead poisoning	158	12.8%	17.1%	74.7%	76
Public school students measured as overweight/obese	NA	37.8%	39.3%	96.2%	19
Teens with STDs (per 1,000 children age 15 to 17)	<5	*	19.0	#VALUE!	*
Medical doctors by county (per 100,000 residents)	0	0.0	229.1	0.0%	94
Dentists by county (per 100,000 residents)	3	13.9	50.1	27.8%	80
Family & Community 	Morgan County		Tennessee Rate	County Rate as a percentage of State Rate	County Rank
	Number	Rate			
Reported child abuse cases	232	5.7%	4.7%	122.2%	56
Commitment to state custody (per 1,000 children)	15	3.3	4.1	80.8%	25
Remaining in state custody (per 1,000 children)	18	3.9	5.2	75.8%	27
Juvenile court referrals	169	4.2%	3.5%	117.5%	53
Recorded marriages (per 1,000 residents)	117	5.4	8.0	67.5%	78
Recorded divorces (per 1,000 residents)	50	2.3	3.5	65.7%	10

Morgan County

At 66th, Morgan County is in the bottom third of Tennessee counties in child well-being. The county's best rankings include the highest high school graduation rate in the state and the lowest rate of pregnancy among girls age 15-17. The county's biggest opportunities for improvement include having one of the lowest percentages of 3rd to 8th grade students demonstrating proficiency on TNReady reading and math tests in the state.

An additional strength is low housing costs and a relatively low rate of babies born at a low birth weight.

Additional challenges include a high percentage of children without health insurance and a high rate of child and teen deaths.

Policy/Practice/Program Options to Improve Outcomes. Many of these policies have multiple models for delivery, including public-private partnership and non-profit leadership.

- Increased access to pre-K can help both math and reading proficiency in later grades. Early assessment of reading skills coupled with appropriate interventions where needed can improve reading proficiency, while increasing STEM opportunities in elementary and middle schools can help improve 3rd to 8th grade math proficiency.
- Most uninsured children in Tennessee qualify for either TennCare or CoverKids, so high rates of uninsured children can be improved with outreach to make sure that families are aware of these insurance opportunities. According to Census Bureau estimates, Morgan County has 193 children who qualify for these health insurance programs but who nonetheless lack insurance.
- Child and teen deaths can be reduced with consistent enforcement of safety measures like proper car seat and seat belt use, bicycle helmet use and life preserver use around water. The fastest-growing cause of child and teen deaths in recent years has been homicide and suicide, often involving a firearm. Families who own firearms can reduce the risk to children and teens by following safe storage practices.