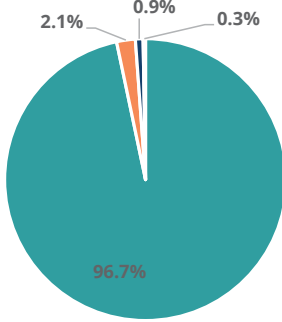


# Family & Community

Rank: 67

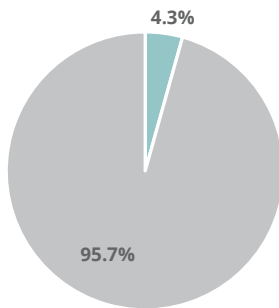
# Meigs Rank: 68

Child Population by Race

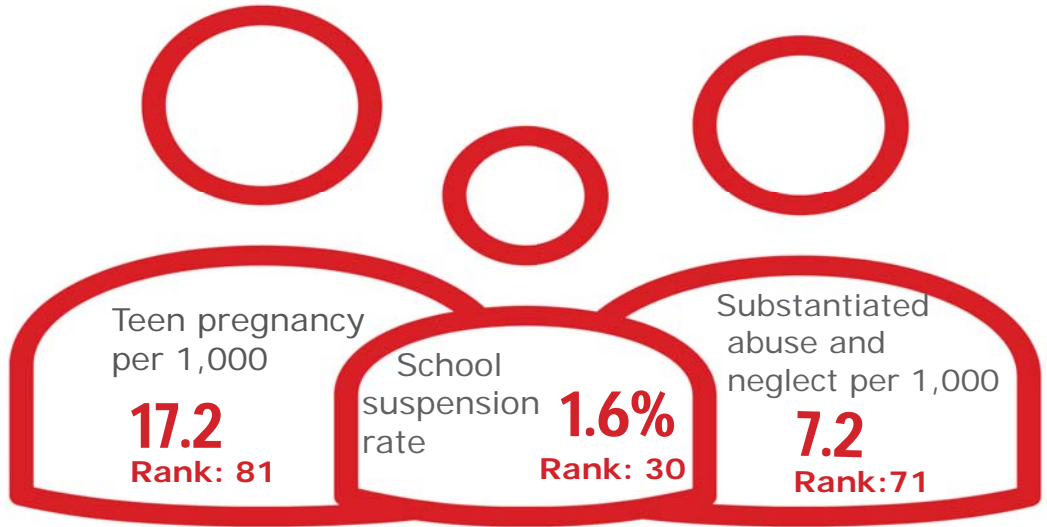


- White, Including Hispanic
- Black, Including Hispanic
- Native American/Alaskan
- Asian/Pacific Islander

Child Population by Hispanic Ethnicity



- Hispanic, All Races
- Non-Hispanic



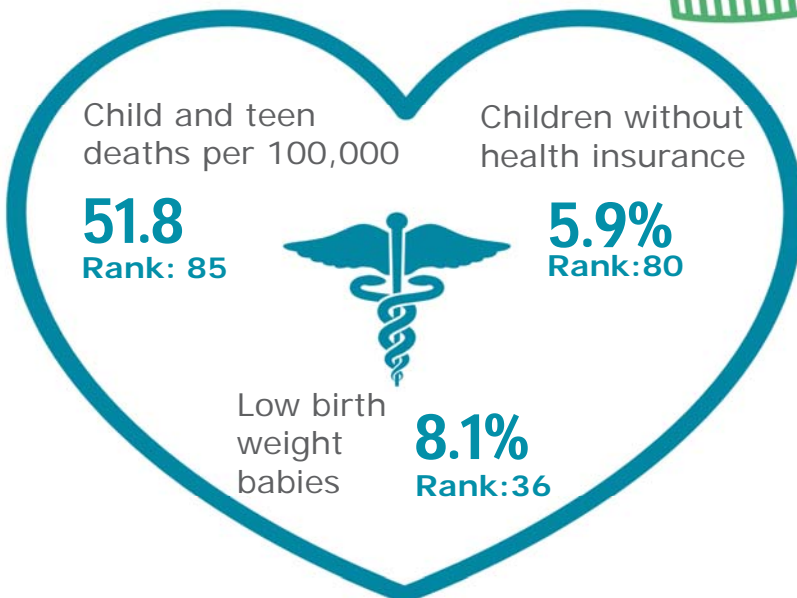
# Economic Well-Being

Rank: 47



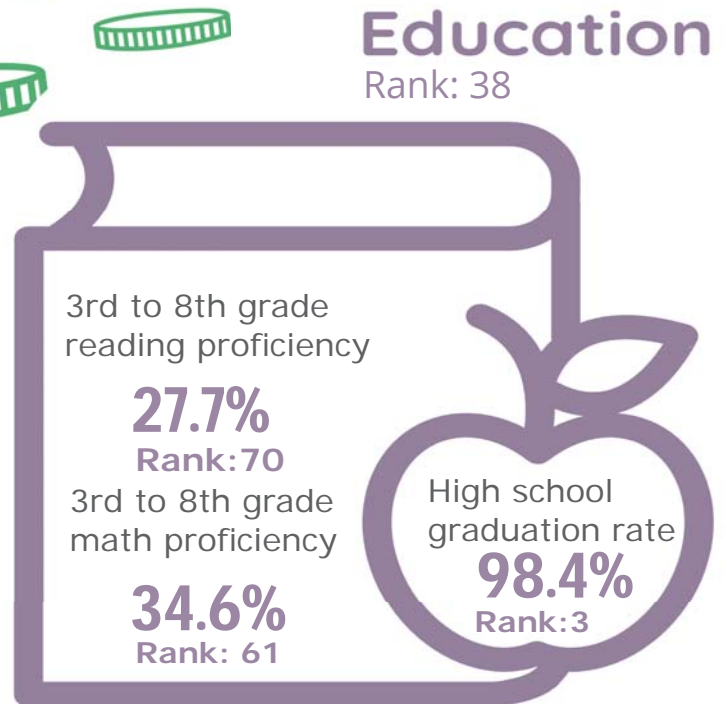
# Health

Rank: 84








# Education

Rank: 38



# Meigs County

Published 1/2021

Demographics 	Meigs County		Tennessee Rate	County Rate as a percentage of State Rate	County Rank
	Number	Rate			
Total population (state comparison is number not rate)	12,298	NA	6,769,975	0.2%	83
Population under 18 years of age	2,510	20.4%	22.2%	91.9%	60
Economic Well-Being 	Meigs County		Tennessee Rate	County Rate as a percentage of State Rate	County Rank
	Number	Rate			
Youth unemployment	13	5.9%	11.2%	52.7%	10
Per capita personal income (state is dollars not rate)	\$33,526	NA	\$46,900	71.5%	70
Median home sales price (state is dollars not rate)	\$153,500	NA	\$146,000	105.1%	32
Children receiving Families First grants (TANF)	62	2.5%	2.7%	90.9%	38
Children receiving SNAP	875	34.9%	28.2%	123.8%	71
Children under five receiving WIC	359	55.0%	30.6%	179.6%	86
Education 	Meigs County		Tennessee Rate	County Rate as a percentage of State Rate	County Rank
	Number	Rate			
School age special education services	283	17.0%	12.3%	137.9%	87
TEIS participation (per 1,000 in age group)	8	20.57	27.9	73.7%	18
Cohort high school dropouts	1	0.9%	8.3%	10.8%	4
Event high school dropouts	2	0.4%	2.2%	18.2%	12
Economically disadvantaged students	1,239	74.5%	65.1%	114.4%	60
School expulsions (per 1,000 students)	0	0.0	2.0	0.0%	1
Chronic absenteeism	153	9.2%	13.3%	69.2%	17
Young adult college enrollment/completion rate	NA	55.7%	62.5%	89.1%	73
Health 	Meigs County		Tennessee Rate	County Rate as a percentage of State Rate	County Rank
	Number	Rate			
Neonatal abstinence syndrome (per 1,000 live births)	0	0.00	11.5	0.0%	1
Births to mothers who smoked during pregnancy	35	28.2%	12.1%	233.1%	91
Children on TennCare (Medicaid)	1,652	56.4%	44.7%	126.2%	78
Total TennCare (Medicaid) enrollees	2,998	24.4%	19.9%	122.5%	69
Births covered by TennCare (Medicaid)	110	88.7%	65.5%	135.5%	85
Children qualified for Medicaid/CHIP but uninsured	109	6.7%	6.5%	103.1%	69
Infant mortality (per 1,000 live births)	2	16.10	6.9	233.3%	89
Neonatal death (per 1,000 live births)	1	8.10	4.4	184.1%	85
Child deaths (per 100,000 children age 1 to 14)	1	51.80	20.5	252.7%	85
Teen violent deaths (per 100,000 children age 15 to 19)	0	0.00	55.7	0.0%	1
Adequate prenatal care	74	59.7%	58.8%	101.5%	59
Children under age six screened for lead poisoning	281	35.8%	17.1%	208.8%	1
Public school students measured as overweight/obese	NA	56.4%	39.3%	143.5%	93
Teens with STDs (per 1,000 children age 15 to 17)	9	19.9	19.0	104.7%	54
Medical doctors by county (per 100,000 residents)	2	16.3	229.1	7.1%	88
Dentists by county (per 100,000 residents)	1	8.1	50.1	16.2%	89
Family & Community 	Meigs County		Tennessee Rate	County Rate as a percentage of State Rate	County Rank
	Number	Rate			
Reported child abuse cases	127	5.1%	4.7%	108.4%	38
Commitment to state custody (per 1,000 children)	14	5.0	4.1	123.1%	49
Remaining in state custody (per 1,000 children)	16	5.7	5.2	110.1%	41
Juvenile court referrals	87	3.5%	3.5%	98.1%	38
Recorded marriages (per 1,000 residents)	98	8.0	8.0	100.0%	18
Recorded divorces (per 1,000 residents)	35	2.8	3.5	80.0%	20

## Meigs County

At 68<sup>th</sup>, Meigs County is in the bottom third of Tennessee counties in child well-being. The county's best rankings include the third-highest high school graduation rate in the state and a relatively low school suspension rate. The county's biggest opportunities for improvement are a high rate of pregnancy among girls age 15-17 and high rates of child and teen deaths.

Additional strengths include comparatively high median household income and low rate of babies born at a low birth weight.

Additional challenges include an above-average percent of children without health insurance and high rates of substantiated cases of abuse or neglect.

*Policy/Practice/Program Options to Improve Outcomes.* Many of these policies have multiple models for delivery, including public-private partnership and non-profit leadership.

- Comprehensive sex education classes that include both encouragement of abstinence and information on birth control have been shown to reduce the number of teen pregnancies.
- Child and teen deaths can be reduced with consistent enforcement of safety measures like proper car seat and seat belt use, bicycle helmet use and life preserver use around water. The fastest-growing cause of child and teen deaths in recent years has been homicide and suicide, often involving a firearm. Families who own firearms can reduce the risk to children and teens by following safe storage practices.
- Most uninsured children in Tennessee qualify for either TennCare or CoverKids, so high rates of uninsured children can be improved with outreach to make sure that families are aware of these insurance opportunities. According to Census Bureau estimates, Meigs County has almost 100 children who qualify for these health insurance programs but who nonetheless lack insurance.
- Two-generation programs such as evidence-based home visiting have been shown to reduce instances of child abuse and neglect.