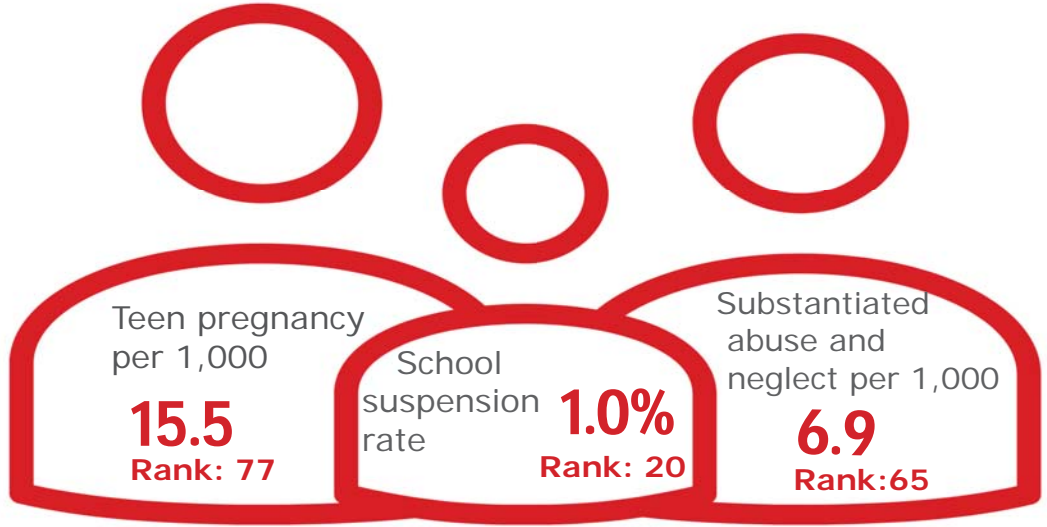


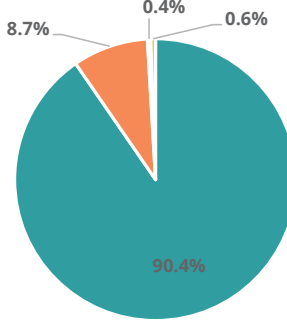
Family & Community

Rank: 52

McNairy Rank: 29



Child Population by Race

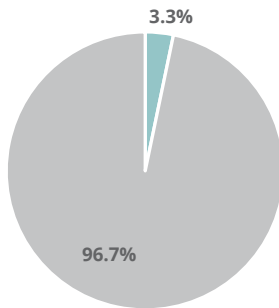


- White, Including Hispanic
- Black, Including Hispanic
- Native American/Alaskan
- Asian/Pacific Islander

Economic Well-Being

Rank: 36

Child Population by Hispanic Ethnicity

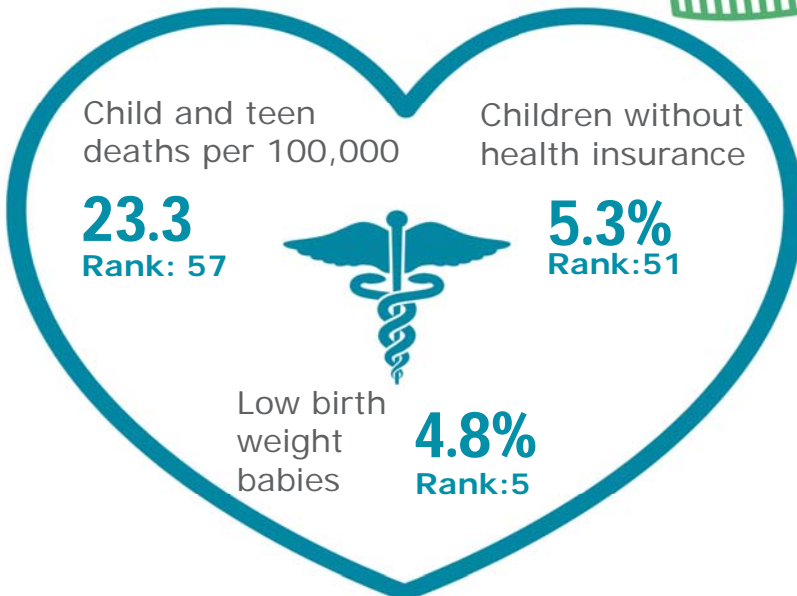


- Hispanic, All Races
- Non-Hispanic



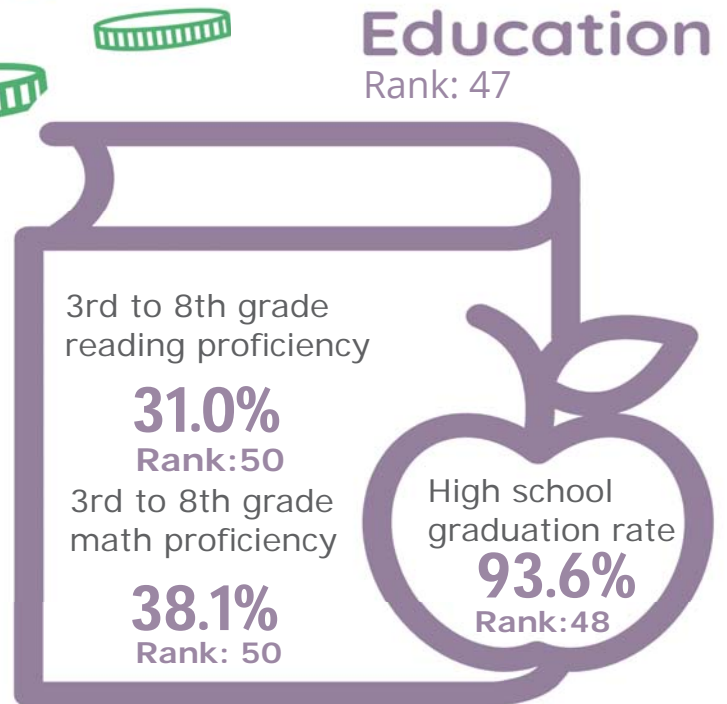
Health

Rank: 12








Education

Rank: 47



McNairy County

Published 1/2021

Demographics 	McNairy County		Tennessee Rate	County Rate as a percentage of State Rate	County Rank
	Number	Rate			
Total population (state comparison is number not rate)	25,827	NA	6,769,975	0.4%	55
Population under 18 years of age	5,542	21.5%	22.2%	96.7%	36
Economic Well-Being 	McNairy County		Tennessee Rate	County Rate as a percentage of State Rate	County Rank
	Number	Rate			
Youth unemployment	68	20.9%	11.2%	186.6%	82
Per capita personal income (state is dollars not rate)	\$32,573	NA	\$46,900	69.5%	76
Median home sales price (state is dollars not rate)	\$82,150	NA	\$146,000	56.3%	89
Children receiving Families First grants (TANF)	137	2.5%	2.7%	91.1%	39
Children receiving SNAP	1,786	32.2%	28.2%	114.4%	56
Children under five receiving WIC	510	37.8%	30.6%	123.4%	45
Education 	McNairy County		Tennessee Rate	County Rate as a percentage of State Rate	County Rank
	Number	Rate			
School age special education services	461	11.2%	12.3%	91.0%	11
TEIS participation (per 1,000 in age group)	26	32.95	27.9	118.2%	53
Cohort high school dropouts	12	3.6%	8.3%	43.4%	33
Event high school dropouts	13	1.0%	2.2%	45.5%	59
Economically disadvantaged students	3,143	76.6%	65.1%	117.6%	62
School expulsions (per 1,000 students)	0	0.0	2.0	0.0%	1
Chronic absenteeism	385	9.4%	13.3%	70.7%	21
Young adult college enrollment/completion rate	NA	68.3%	62.5%	109.3%	8
Health 	McNairy County		Tennessee Rate	County Rate as a percentage of State Rate	County Rank
	Number	Rate			
Neonatal abstinence syndrome (per 1,000 live births)	*	*	11.5	*	*
Births to mothers who smoked during pregnancy	56	20.8%	12.1%	171.9%	49
Children on TennCare (Medicaid)	3,474	53.8%	44.7%	120.3%	60
Total TennCare (Medicaid) enrollees	6,644	25.7%	19.9%	129.3%	79
Births covered by TennCare (Medicaid)	216	80.3%	65.5%	122.7%	56
Children qualified for Medicaid/CHIP but uninsured	220	6.0%	6.5%	92.3%	77
Infant mortality (per 1,000 live births)	3	11.20	6.9	162.3%	81
Neonatal death (per 1,000 live births)	1	3.70	4.4	84.1%	58
Child deaths (per 100,000 children age 1 to 14)	1	23.30	20.5	113.7%	57
Teen violent deaths (per 100,000 children age 15 to 19)	0	0.00	55.7	0.0%	1
Adequate prenatal care	186	69.1%	58.8%	117.5%	21
Children under age six screened for lead poisoning	428	26.1%	17.1%	152.5%	7
Public school students measured as overweight/obese	NA	43.0%	39.3%	109.4%	52
Teens with STDs (per 1,000 children age 15 to 17)	17	17.2	19.0	90.3%	53
Medical doctors by county (per 100,000 residents)	10	38.7	229.1	16.9%	60
Dentists by county (per 100,000 residents)	10	38.7	50.1	77.3%	22
Family & Community 	McNairy County		Tennessee Rate	County Rate as a percentage of State Rate	County Rank
	Number	Rate			
Reported child abuse cases	345	6.2%	4.7%	133.4%	73
Commitment to state custody (per 1,000 children)	25	4.1	4.1	99.7%	34
Remaining in state custody (per 1,000 children)	28	4.5	5.2	87.4%	34
Juvenile court referrals	168	3.0%	3.5%	85.8%	31
Recorded marriages (per 1,000 residents)	140	5.4	8.0	67.5%	78
Recorded divorces (per 1,000 residents)	66	2.6	3.5	74.3%	17

McNairy County

At 29th, McNairy County ranks in the top third of Tennessee counties in child well-being. The county's best rankings include one of the lowest rates of babies born at a low birth weight in the state and low housing costs. The county's biggest opportunities for improvement include a high rate of pregnancy among girls age 15-17 and a low median household income.

Additional strengths include a low rate of school suspensions and an above-average high school graduation rate.

Additional challenges include a high rate of substantiated cases of abuse or neglect and a high rate of child or teen deaths.

Policy/Practice/Program Options to Improve Outcomes. Many of these policies have multiple models for delivery, including public-private partnership and non-profit leadership.

- Comprehensive sex education classes that include both encouragement of abstinence and information on birth control have been shown to reduce the number of teen pregnancies.
- With a low median household income, improving outreach to those who may qualify to receive SNAP, WIC and TennCare benefits to be sure they are aware of these services can help ensure basic needs are met. Additionally, nutrition programs that provide food for school-age children to take home can contribute to food security. Expanding services through Family Resource Centers can also help reach these vulnerable populations.
- Two-generation programs such as evidence-based home visiting have been shown to reduce instances of child abuse and neglect.
- Child and teen deaths can be reduced with consistent enforcement of safety measures like proper car seat and seat belt use, bicycle helmet use and life preserver use around water. The fastest-growing cause of child and teen deaths in recent years has been homicide and suicide, often involving a firearm. Families who own firearms can reduce the risk to children and teens by following safe storage practices.