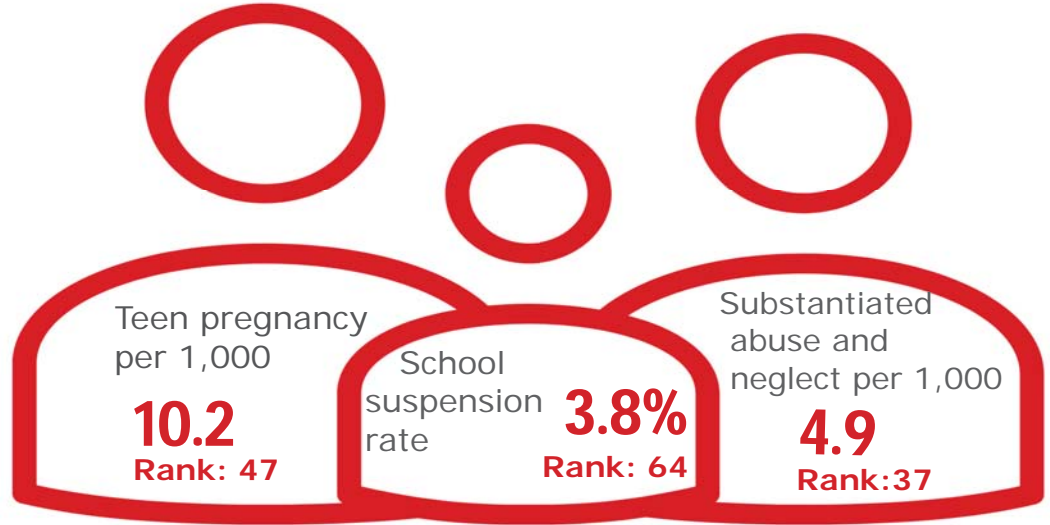




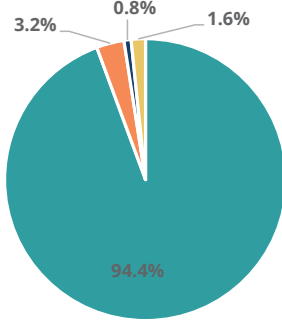
# Family & Community

Rank: 39

# Loudon Rank: 16



Child Population by Race

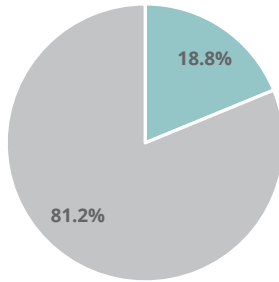


- White, Including Hispanic
- Black, Including Hispanic
- Native American/Alaskan
- Asian/Pacific Islander

# Economic Well-Being

Rank: 9

Child Population by Hispanic Ethnicity

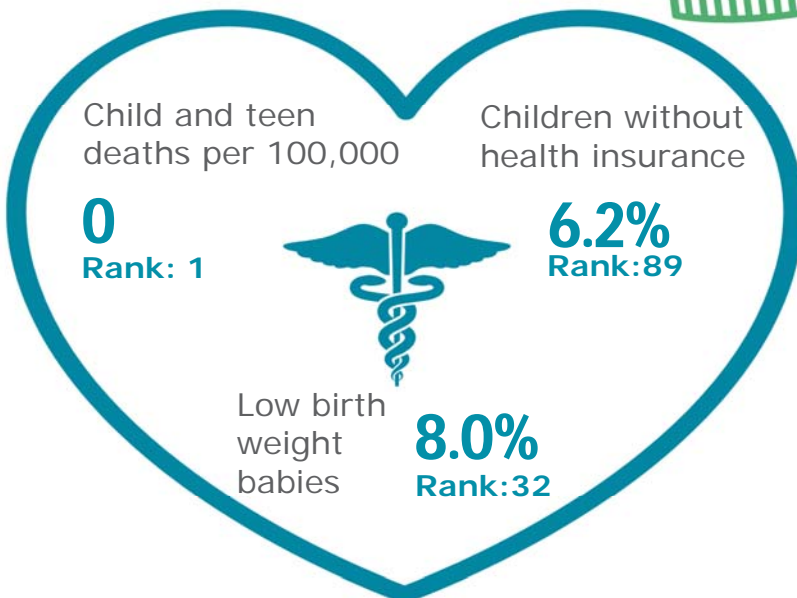


- Hispanic, All Races
- Non-Hispanic



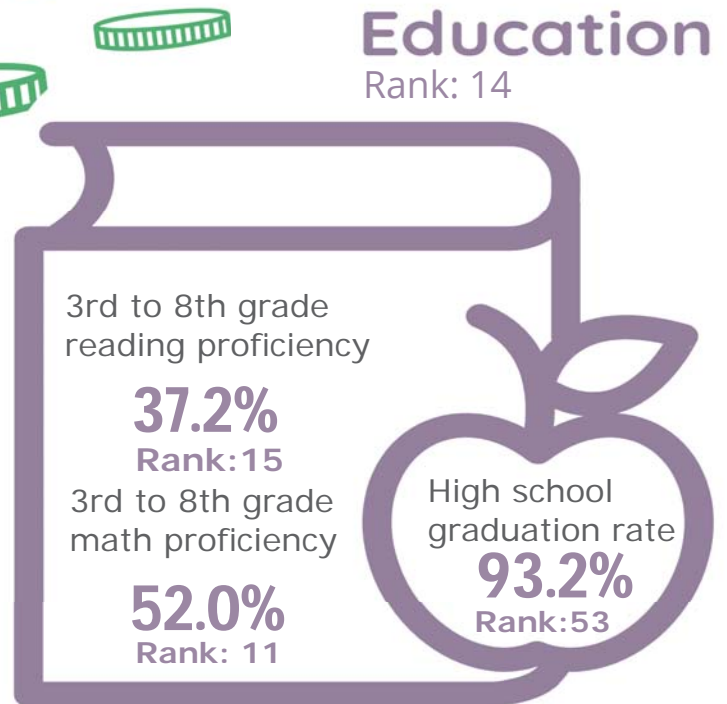
# Health

Rank: 59








# Education

Rank: 14



# Loudon County

Published 1/2021

Demographics 	Loudon County		Tennessee Rate	County Rate as a percentage of State Rate	County Rank
	Number	Rate			
Total population (state comparison is number not rate)	53,054	NA	6,769,975	0.8%	31
Population under 18 years of age	10,200	19.2%	22.2%	86.6%	78
Economic Well-Being 	Loudon County		Tennessee Rate	County Rate as a percentage of State Rate	County Rank
	Number	Rate			
Youth unemployment	81	13.1%	11.2%	117.0%	56
Per capita personal income (state is dollars not rate)	\$48,491	NA	\$46,900	103.4%	9
Median home sales price (state is dollars not rate)	\$254,478	NA	\$146,000	174.3%	5
Children receiving Families First grants (TANF)	153	1.5%	2.7%	55.5%	8
Children receiving SNAP	2,202	21.6%	28.2%	76.7%	9
Children under five receiving WIC	894	32.3%	30.6%	105.4%	21
Education 	Loudon County		Tennessee Rate	County Rate as a percentage of State Rate	County Rank
	Number	Rate			
School age special education services	756	11.0%	12.3%	89.1%	8
TEIS participation (per 1,000 in age group)	58	34.83	27.9	124.9%	60
Cohort high school dropouts	26	4.9%	8.3%	58.6%	53
Event high school dropouts	14	0.7%	2.2%	30.9%	28
Economically disadvantaged students	3,992	57.9%	65.1%	88.9%	19
School expulsions (per 1,000 students)	9	1.2	2.0	60.0%	82
Chronic absenteeism	648	9.4%	13.3%	70.7%	21
Young adult college enrollment/completion rate	NA	60.4%	62.5%	96.6%	46
Health 	Loudon County		Tennessee Rate	County Rate as a percentage of State Rate	County Rank
	Number	Rate			
Neonatal abstinence syndrome (per 1,000 live births)	10	21.69	11.5	188.9%	41
Births to mothers who smoked during pregnancy	75	16.3%	12.1%	134.7%	24
Children on TennCare (Medicaid)	5,120	43.4%	44.7%	97.1%	21
Total TennCare (Medicaid) enrollees	8,493	16.0%	19.9%	80.5%	9
Births covered by TennCare (Medicaid)	330	71.6%	65.5%	109.4%	26
Children qualified for Medicaid/CHIP but uninsured	476	8.4%	6.5%	129.2%	93
Infant mortality (per 1,000 live births)	2	4.30	6.9	62.3%	31
Neonatal death (per 1,000 live births)	1	2.20	4.4	50.0%	42
Child deaths (per 100,000 children age 1 to 14)	0	0.00	20.5	0.0%	1
Teen violent deaths (per 100,000 children age 15 to 19)	1	36.70	55.7	65.9%	47
Adequate prenatal care	308	66.8%	58.8%	113.6%	33
Children under age six screened for lead poisoning	332	10.0%	17.1%	58.3%	85
Public school students measured as overweight/obese	NA	42.2%	39.3%	107.4%	44
Teens with STDs (per 1,000 children age 15 to 17)	8	4.8	19.0	25.3%	4
Medical doctors by county (per 100,000 residents)	27	50.9	229.1	22.2%	42
Dentists by county (per 100,000 residents)	22	41.5	50.1	82.8%	17
Family & Community 	Loudon County		Tennessee Rate	County Rate as a percentage of State Rate	County Rank
	Number	Rate			
Reported child abuse cases	409	4.0%	4.7%	85.9%	11
Commitment to state custody (per 1,000 children)	33	2.9	4.1	72.1%	17
Remaining in state custody (per 1,000 children)	30	2.7	5.2	51.3%	11
Juvenile court referrals	289	2.8%	3.5%	80.2%	30
Recorded marriages (per 1,000 residents)	289	5.4	8.0	67.5%	78
Recorded divorces (per 1,000 residents)	185	3.5	3.5	100.0%	44

## Loudon County

At 16<sup>th</sup>, Loudon County ranks in the top fifth of Tennessee counties in child well-being. The county's best rankings include no child or teen deaths and a high median household income. The county's biggest opportunities for improvement include one of the highest rates of children who lack health insurance and having high housing costs.

Additional strengths include a comparatively low rate of children living in poverty (16 percent is still too high, but better than most Tennessee counties) and above-average percentages of 3<sup>rd</sup> to 8<sup>th</sup> grade students demonstrating proficiency on TNReady reading and math tests.

Additional challenges include a relatively high school suspension rate and high rate of pregnancy among girls age 15-17.

*Policy/Practice/Program Options to Improve Outcomes.* Many of these policies have multiple models for delivery, including public-private partnership and non-profit leadership.

- Most uninsured children in Tennessee qualify for either TennCare or CoverKids, so high rates of uninsured children can be improved with outreach to make sure that families are aware of these insurance opportunities. According to Census Bureau estimates, Loudon County has over 425 children who qualify for these health insurance programs but who nonetheless lack insurance.
- Pro-active housing policy that helps ensure affordable housing is available for people to live where they work can improve negative outcomes related to high housing costs.
- Suspension rates can be reduced through clear definitions of what constitutes suspendable behavior and a focus on restorative discipline practices that aim to improve behavior while keeping children in school.
- Comprehensive sex education classes that include both encouragement of abstinence and information on birth control have been shown to reduce the number of teen pregnancies.