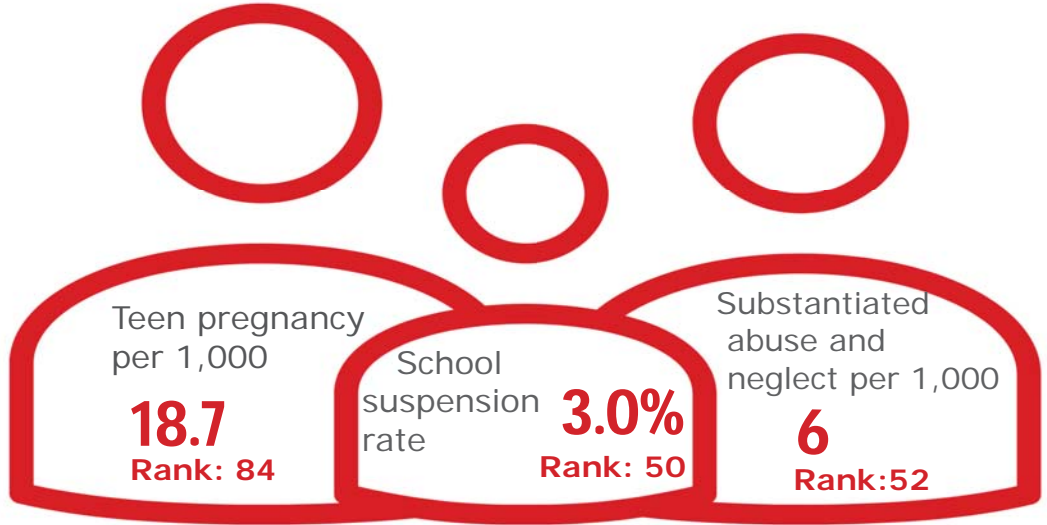


Family & Community

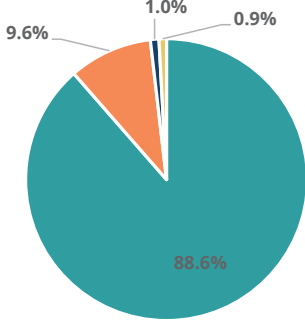
Rank: 71

Lincoln

Rank: 43



Child Population by Race

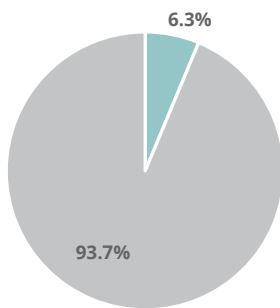


- White, Including Hispanic
- Black, Including Hispanic
- Native American/Alaskan
- Asian/Pacific Islander

Economic Well-Being

Rank: 5

Child Population by Hispanic Ethnicity

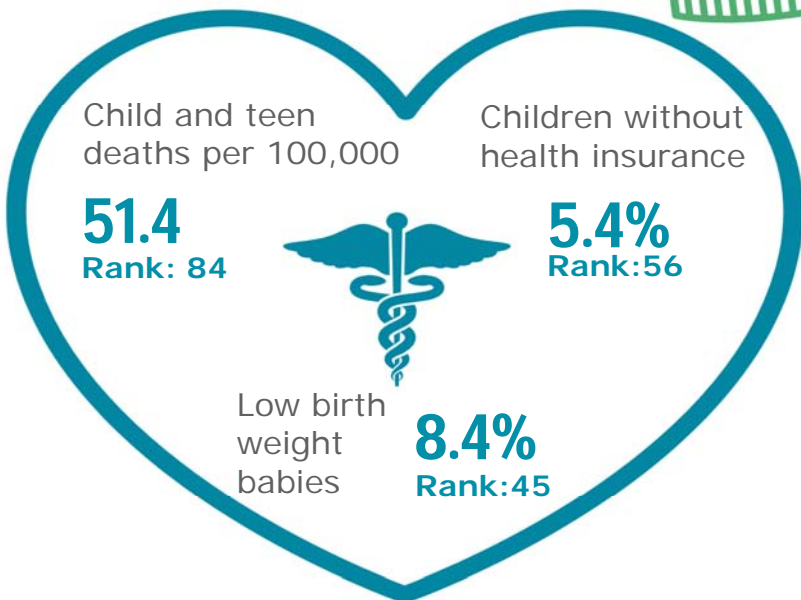


- Hispanic, All Races
- Non-Hispanic



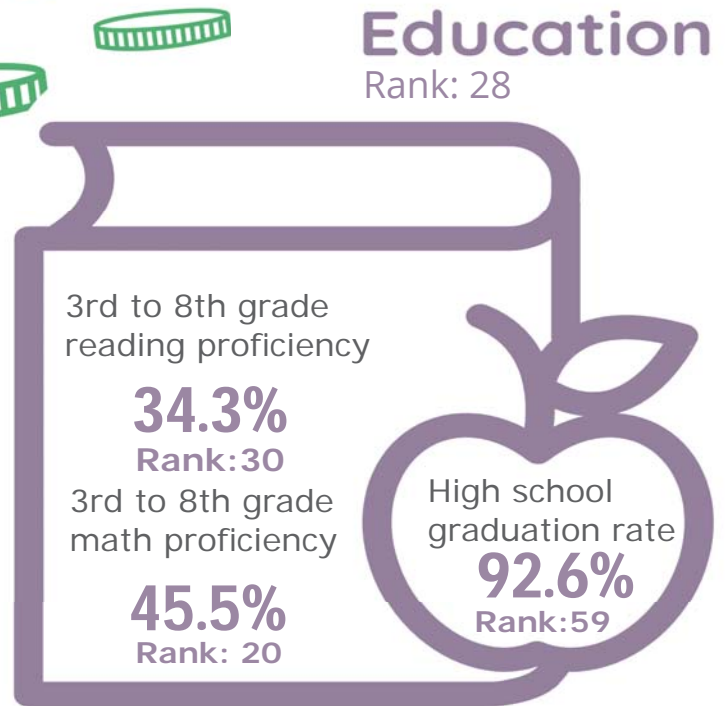
Health

Rank: 76








Education

Rank: 28



Lincoln County

Published 1/2021

Demographics 	Lincoln County		Tennessee Rate	County Rate as a percentage of State Rate	County Rank
	Number	Rate			
Total population (state comparison is number not rate)	34,126	NA	6,769,975	0.5%	43
Population under 18 years of age	7,489	21.9%	22.2%	98.8%	30
Economic Well-Being 	Lincoln County		Tennessee Rate	County Rate as a percentage of State Rate	County Rank
	Number	Rate			
Youth unemployment	79	15.3%	11.2%	136.6%	64
Per capita personal income (state is dollars not rate)	\$41,388	NA	\$46,900	88.2%	20
Median home sales price (state is dollars not rate)	\$121,900	NA	\$146,000	83.5%	64
Children receiving Families First grants (TANF)	211	2.8%	2.7%	103.8%	51
Children receiving SNAP	2,092	27.9%	28.2%	99.2%	32
Children under five receiving WIC	637	34.0%	30.6%	110.9%	29
Education 	Lincoln County		Tennessee Rate	County Rate as a percentage of State Rate	County Rank
	Number	Rate			
School age special education services	674	13.3%	12.3%	107.9%	52
TEIS participation (per 1,000 in age group)	22	19.59	27.9	70.3%	15
Cohort high school dropouts	13	3.4%	8.3%	41.0%	32
Event high school dropouts	9	0.6%	2.2%	27.3%	21
Economically disadvantaged students	2,852	56.4%	65.1%	86.6%	16
School expulsions (per 1,000 students)	8	1.5	2.0	75.0%	86
Chronic absenteeism	623	12.3%	13.3%	92.5%	40
Young adult college enrollment/completion rate	NA	62.0%	62.5%	99.2%	41
Health 	Lincoln County		Tennessee Rate	County Rate as a percentage of State Rate	County Rank
	Number	Rate			
Neonatal abstinence syndrome (per 1,000 live births)	*	*	11.5	*	*
Births to mothers who smoked during pregnancy	82	21.6%	12.1%	178.5%	54
Children on TennCare (Medicaid)	3,995	46.2%	44.7%	103.4%	28
Total TennCare (Medicaid) enrollees	6,980	20.5%	19.9%	102.8%	33
Births covered by TennCare (Medicaid)	275	72.6%	65.5%	110.8%	28
Children qualified for Medicaid/CHIP but uninsured	281	6.0%	6.5%	92.3%	42
Infant mortality (per 1,000 live births)	4	10.60	6.9	153.6%	80
Neonatal death (per 1,000 live births)	3	7.90	4.4	179.5%	83
Child deaths (per 100,000 children age 1 to 14)	3	51.40	20.5	250.7%	84
Teen violent deaths (per 100,000 children age 15 to 19)	2	97.10	55.7	174.3%	74
Adequate prenatal care	238	62.8%	58.8%	106.8%	46
Children under age six screened for lead poisoning	389	17.2%	17.1%	100.5%	52
Public school students measured as overweight/obese	NA	39.4%	39.3%	100.3%	28
Teens with STDs (per 1,000 children age 15 to 17)	12	9.4	19.0	49.6%	20
Medical doctors by county (per 100,000 residents)	22	64.5	229.1	28.1%	30
Dentists by county (per 100,000 residents)	5	14.7	50.1	29.3%	79
Family & Community 	Lincoln County		Tennessee Rate	County Rate as a percentage of State Rate	County Rank
	Number	Rate			
Reported child abuse cases	395	5.3%	4.7%	113.0%	44
Commitment to state custody (per 1,000 children)	15	1.8	4.1	44.6%	5
Remaining in state custody (per 1,000 children)	35	4.2	5.2	81.4%	30
Juvenile court referrals	362	4.8%	3.5%	136.8%	64
Recorded marriages (per 1,000 residents)	233	6.8	8.0	85.0%	35
Recorded divorces (per 1,000 residents)	147	4.3	3.5	122.9%	71

Lincoln County

At 43rd, Lincoln County ranks near the middle of Tennessee counties in child well-being. The county's best rankings include a relatively low rate of child poverty (19.3 percent is still too high, but better than most Tennessee counties). Lincoln county had a relatively high rate of 3rd to 8th grade students demonstrating proficiency on TNReady math and reading tests. The county's biggest opportunities for improvement include having high rates of child and teen deaths and high rates of pregnancy among girls age 15-17.

Additional strengths include a relatively high median household income and below-average housing costs.

Additional challenges include an above-average percent of children without health insurance and of substantiated cases of abuse or neglect.

Policy/Practice/Program Options to Improve Outcomes. Many of these policies have multiple models for delivery, including public-private partnership and non-profit leadership.

- Child and teen deaths can be reduced with consistent enforcement of safety measures like proper car seat and seat belt use, bicycle helmet use and life preserver use around water. The fastest-growing cause of child and teen deaths in recent years has been homicide and suicide, often involving a firearm. Families who own firearms can reduce the risk to children and teens by following safe storage practices.
- Comprehensive sex education classes that include both encouragement of abstinence and information on birth control have been shown to reduce the number of teen pregnancies.
- Most uninsured children in Tennessee qualify for either TennCare or CoverKids, so high rates of uninsured children can be improved with outreach to make sure that families are aware of these insurance opportunities. According to Census Bureau estimates, Lincoln County has over 220 children who qualify for these health insurance programs but who nonetheless lack insurance.
- Two-generation programs such as evidence-based home visiting have been shown to reduce instances of child abuse and neglect.