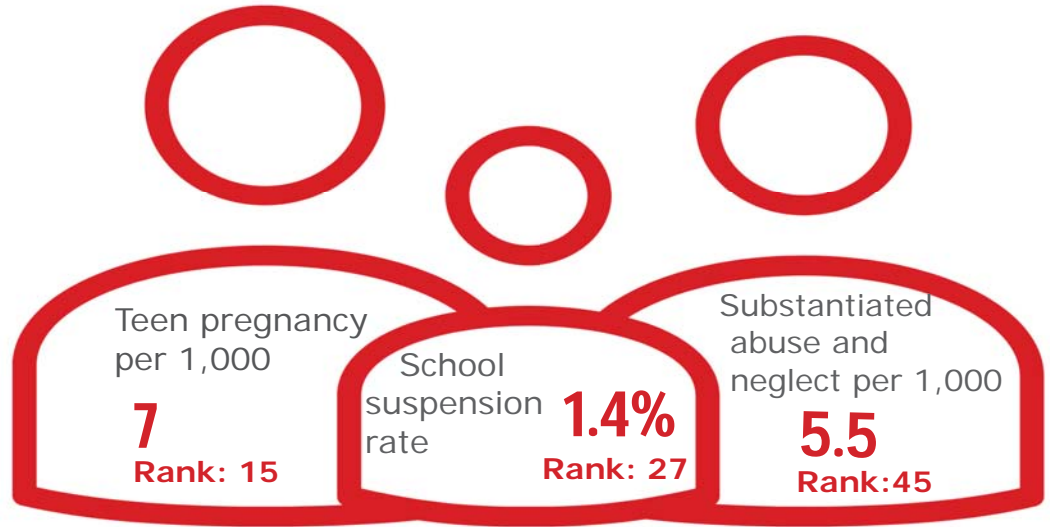


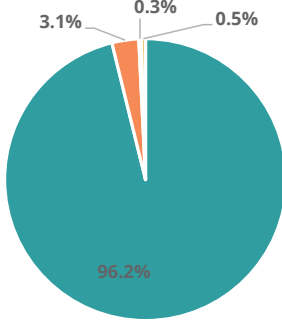
Family & Community

Rank: 14

Lawrence Rank: 23



Child Population by Race

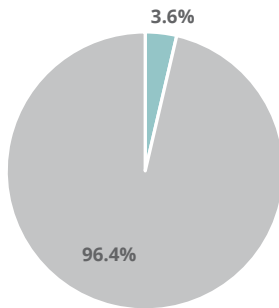


- White, Including Hispanic
- Black, Including Hispanic
- Native American/Alaskan
- Asian/Pacific Islander

Economic Well-Being

Rank: 33

Child Population by Hispanic Ethnicity

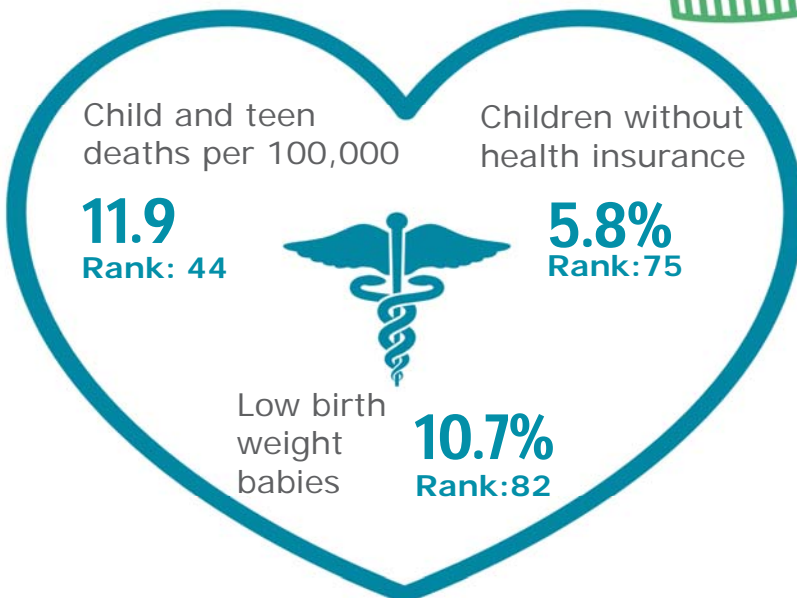


- Hispanic, All Races
- Non-Hispanic



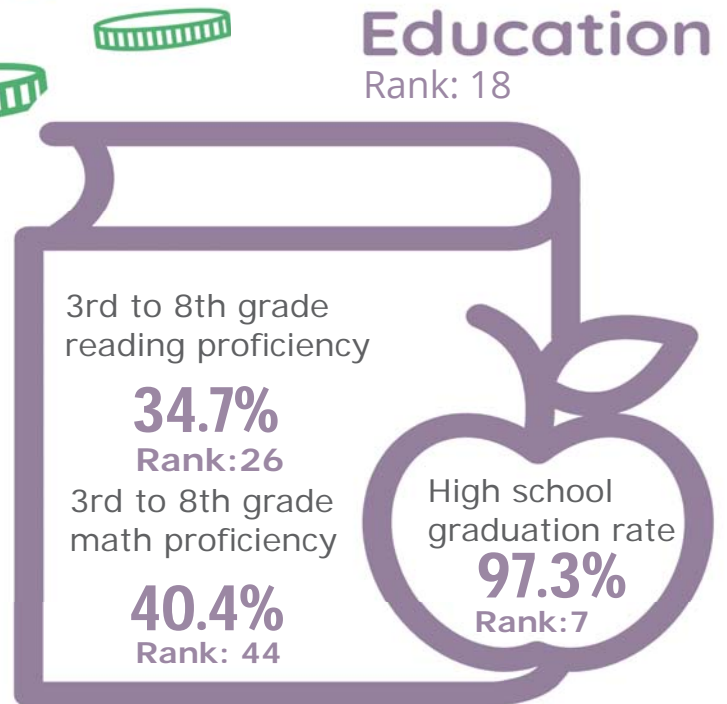
Health

Rank: 80








Education

Rank: 18



Lawrence County

Published 1/2021

Demographics 	Lawrence County		Tennessee Rate	County Rate as a percentage of State Rate	County Rank
	Number	Rate			
Total population (state comparison is number not rate)	43,740	NA	6,769,975	0.6%	35
Population under 18 years of age	10,742	24.6%	22.2%	110.6%	6
Economic Well-Being 	Lawrence County		Tennessee Rate	County Rate as a percentage of State Rate	County Rank
	Number	Rate			
Youth unemployment	98	14.6%	11.2%	130.4%	62
Per capita personal income (state is dollars not rate)	\$35,252	NA	\$46,900	75.2%	58
Median home sales price (state is dollars not rate)	\$112,000	NA	\$146,000	76.7%	73
Children receiving Families First grants (TANF)	198	1.8%	2.7%	68.1%	13
Children receiving SNAP	2,651	24.7%	28.2%	87.6%	16
Children under five receiving WIC	939	32.5%	30.6%	106.2%	22
Education 	Lawrence County		Tennessee Rate	County Rate as a percentage of State Rate	County Rank
	Number	Rate			
School age special education services	728	10.9%	12.3%	88.9%	7
TEIS participation (per 1,000 in age group)	37	21.50	27.9	77.1%	19
Cohort high school dropouts	11	2.4%	8.3%	28.9%	21
Event high school dropouts	14	0.7%	2.2%	31.8%	29
Economically disadvantaged students	4,606	68.1%	65.1%	104.6%	47
School expulsions (per 1,000 students)	0	0.0	2.0	0.0%	1
Chronic absenteeism	667	10.0%	13.3%	75.2%	27
Young adult college enrollment/completion rate	NA	69.1%	62.5%	110.6%	7
Health 	Lawrence County		Tennessee Rate	County Rate as a percentage of State Rate	County Rank
	Number	Rate			
Neonatal abstinence syndrome (per 1,000 live births)	*	*	11.5	*	*
Births to mothers who smoked during pregnancy	103	17.5%	12.1%	144.6%	28
Children on TennCare (Medicaid)	5,698	46.2%	44.7%	103.3%	27
Total TennCare (Medicaid) enrollees	10,122	23.1%	19.9%	116.3%	58
Births covered by TennCare (Medicaid)	404	68.5%	65.5%	104.6%	18
Children qualified for Medicaid/CHIP but uninsured	453	6.3%	6.5%	96.9%	58
Infant mortality (per 1,000 live births)	4	6.80	6.9	98.6%	56
Neonatal death (per 1,000 live births)	2	3.40	4.4	77.3%	55
Child deaths (per 100,000 children age 1 to 14)	1	11.90	20.5	58.0%	44
Teen violent deaths (per 100,000 children age 15 to 19)	0	0.00	55.7	0.0%	1
Adequate prenatal care	276	46.8%	58.8%	79.6%	90
Children under age six screened for lead poisoning	403	11.6%	17.1%	67.7%	80
Public school students measured as overweight/obese	NA	41.4%	39.3%	105.3%	33
Teens with STDs (per 1,000 children age 15 to 17)	18	10.1	19.0	53.2%	30
Medical doctors by county (per 100,000 residents)	26	59.4	229.1	25.9%	35
Dentists by county (per 100,000 residents)	8	18.3	50.1	36.5%	65
Family & Community 	Lawrence County		Tennessee Rate	County Rate as a percentage of State Rate	County Rank
	Number	Rate			
Reported child abuse cases	566	5.3%	4.7%	112.9%	43
Commitment to state custody (per 1,000 children)	88	7.4	4.1	182.8%	76
Remaining in state custody (per 1,000 children)	128	10.8	5.2	208.0%	82
Juvenile court referrals	392	3.6%	3.5%	103.3%	41
Recorded marriages (per 1,000 residents)	321	7.3	8.0	91.3%	27
Recorded divorces (per 1,000 residents)	174	4.0	3.5	114.3%	62

Lawrence County

At 23rd, Lawrence County is just in the top fourth of Tennessee counties in child well-being. Some of the county's strongest rankings include a strong high school graduation rate and low housing costs. The county's biggest opportunities for improvement are a high percentage of babies born at a low birth weight and high percentages of children who lack health insurance.

Additional strengths include a low rate of pregnancy among girls age 15-17 and a relatively high rate of 3rd to 8th grade students demonstrating proficiency on TNReady reading tests.

Additional challenges include below-average median household income and almost one in four children living in poverty.

Policy/Practice/Program Options to Improve Outcomes. Many of these policies have multiple models for delivery, including public-private partnership and non-profit leadership.

- Most uninsured children in Tennessee qualify for either TennCare or CoverKids, so high rates of uninsured children can be improved with outreach to make sure that families are aware of these insurance opportunities. According to Census Bureau estimates, Lawrence County has almost 350 children who qualify for these health insurance programs but who nonetheless lack insurance.
- Most uninsured children in Tennessee qualify for either TennCare or CoverKids, so high rates of uninsured children can be improved with outreach to make sure that families are aware of these insurance opportunities. According to Census Bureau estimates, Lawrence County has over 450 children who qualify for these health insurance programs but who nonetheless lack insurance.
- With a low median household income and children living in poverty, improving outreach to those who may qualify to receive SNAP, WIC and TennCare benefits to be sure they are aware of these services can help ensure basic needs are met. Additionally, nutrition programs that provide food for school-age children to take home can contribute to food security. Expanding services through Family Resource Centers can also help reach these vulnerable populations.