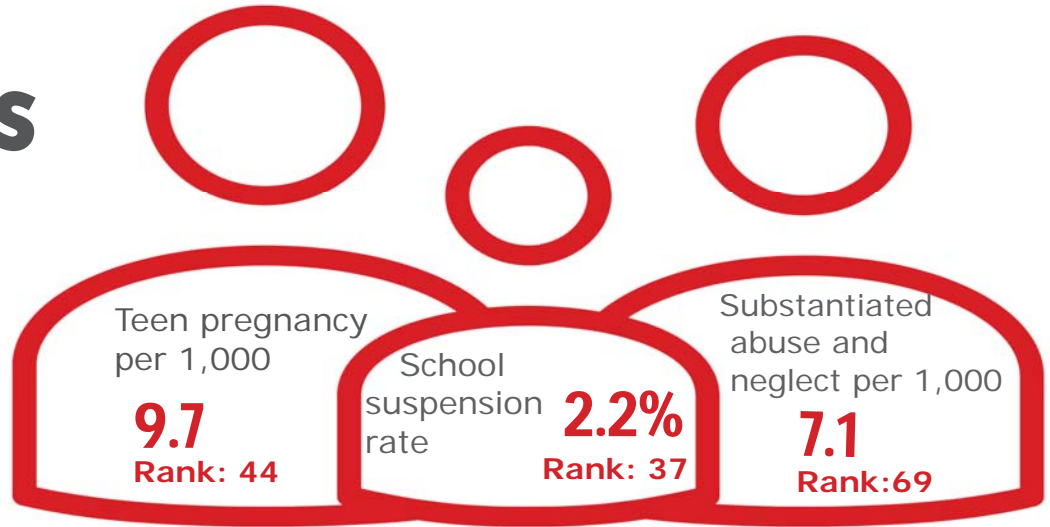


Family & Community

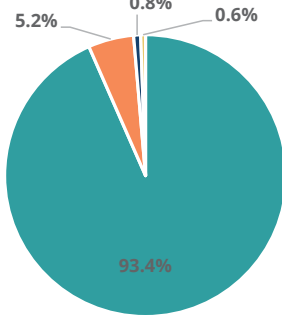
Rank: 45

Humphreys

Rank: 37



Child Population by Race

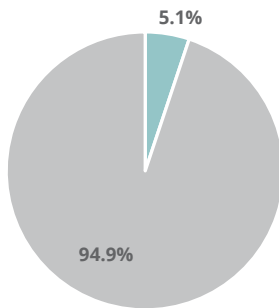


- White, Including Hispanic
- Black, Including Hispanic
- Native American/Alaskan
- Asian/Pacific Islander

Economic Well-Being

Rank: 13

Child Population by Hispanic Ethnicity

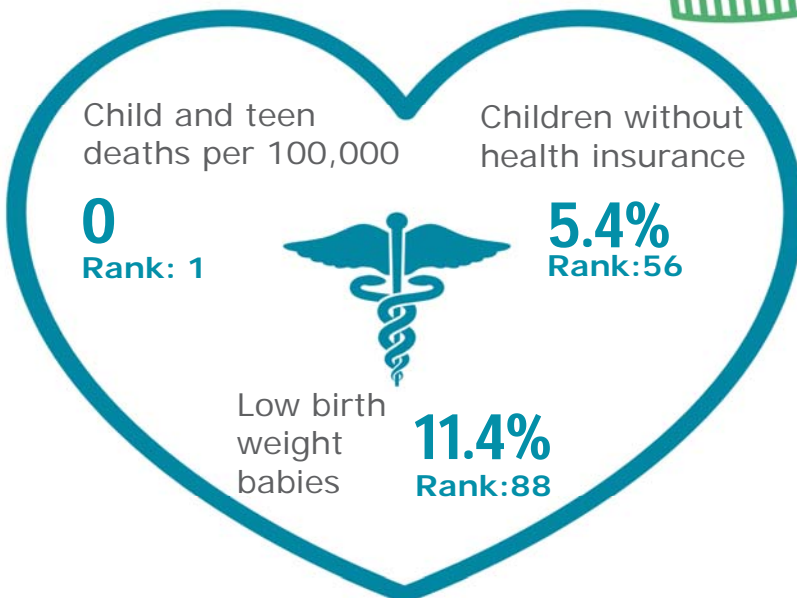


- Hispanic, All Races
- Non-Hispanic



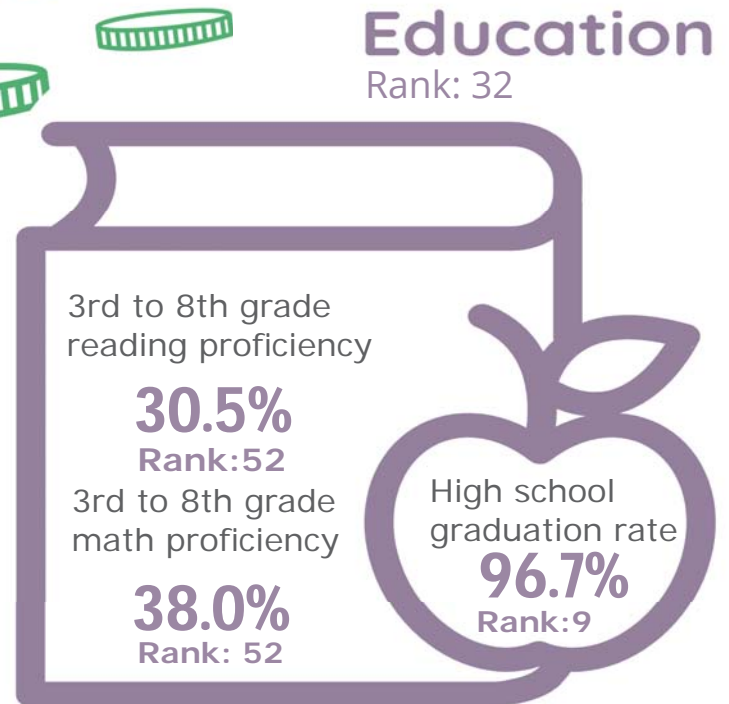
Health

Rank: 67








Education

Rank: 32



Humphreys County

Published 1/2021

Demographics 	Humphreys County		Tennessee Rate	County Rate as a percentage of State Rate	County Rank
	Number	Rate			
Total population (state comparison is number not rate)	18,498	NA	6,769,975	0.3%	68
Population under 18 years of age	3,923	21.2%	22.2%	95.5%	42
Economic Well-Being 	Humphreys County		Tennessee Rate	County Rate as a percentage of State Rate	County Rank
	Number	Rate			
Youth unemployment	36	18.5%	11.2%	165.2%	75
Per capita personal income (state is dollars not rate)	\$38,665	NA	\$46,900	82.4%	38
Median home sales price (state is dollars not rate)	\$115,500	NA	\$146,000	79.1%	70
Children receiving Families First grants (TANF)	78	2.0%	2.7%	73.0%	17
Children receiving SNAP	1,130	28.8%	28.2%	102.3%	36
Children under five receiving WIC	365	36.1%	30.6%	117.9%	41
Education 	Humphreys County		Tennessee Rate	County Rate as a percentage of State Rate	County Rank
	Number	Rate			
School age special education services	438	15.3%	12.3%	124.5%	81
TEIS participation (per 1,000 in age group)	17	28.43	27.9	101.9%	42
Cohort high school dropouts	13	7.0%	8.3%	84.3%	76
Event high school dropouts	8	1.0%	2.2%	45.5%	59
Economically disadvantaged students	1,706	60.8%	65.1%	93.4%	27
School expulsions (per 1,000 students)	0	0.0	2.0	0.0%	1
Chronic absenteeism	386	13.6%	13.3%	102.3%	58
Young adult college enrollment/completion rate	NA	62.9%	62.5%	100.6%	35
Health 	Humphreys County		Tennessee Rate	County Rate as a percentage of State Rate	County Rank
	Number	Rate			
Neonatal abstinence syndrome (per 1,000 live births)	*	*	11.5	*	*
Births to mothers who smoked during pregnancy	51	21.5%	12.1%	177.7%	53
Children on TennCare (Medicaid)	2,290	50.3%	44.7%	112.4%	43
Total TennCare (Medicaid) enrollees	4,139	22.4%	19.9%	112.5%	46
Births covered by TennCare (Medicaid)	197	83.1%	65.5%	127.0%	68
Children qualified for Medicaid/CHIP but uninsured	144	6.2%	6.5%	95.4%	49
Infant mortality (per 1,000 live births)	1	4.20	6.9	60.9%	29
Neonatal death (per 1,000 live births)	1	4.20	4.4	95.5%	61
Child deaths (per 100,000 children age 1 to 14)	0	0.00	20.5	0.0%	1
Teen violent deaths (per 100,000 children age 15 to 19)	0	0.00	55.7	0.0%	1
Adequate prenatal care	156	65.8%	58.8%	111.9%	37
Children under age six screened for lead poisoning	157	12.9%	17.1%	75.2%	75
Public school students measured as overweight/obese	NA	41.9%	39.3%	106.6%	39
Teens with STDs (per 1,000 children age 15 to 17)	6	8.8	19.0	46.0%	16
Medical doctors by county (per 100,000 residents)	8	43.2	229.1	18.9%	52
Dentists by county (per 100,000 residents)	2	10.8	50.1	21.6%	87
Family & Community 	Humphreys County		Tennessee Rate	County Rate as a percentage of State Rate	County Rank
	Number	Rate			
Reported child abuse cases	249	6.3%	4.7%	136.0%	75
Commitment to state custody (per 1,000 children)	28	6.4	4.1	158.1%	64
Remaining in state custody (per 1,000 children)	26	6.0	5.2	114.9%	45
Juvenile court referrals	345	8.8%	3.5%	248.9%	82
Recorded marriages (per 1,000 residents)	106	5.7	8.0	71.3%	68
Recorded divorces (per 1,000 residents)	79	4.3	3.5	122.9%	71

Humphreys County

At 37th, Humphreys County is just outside the top third of Tennessee counties in child well-being. Some of the county's strongest rankings include no child and teen deaths in 2018 and a graduation rate that is in the top 10 in the state. The county's biggest challenges are a high percentage of babies born at a low birth weight and a high rate of substantiated cases of abuse and neglect.

Additional strengths include a low housing costs and a relatively low rate of child poverty. Though it is still a higher number than one would hope, Humphreys County's 20.3 percent child poverty is lower than most counties in the state.

Additional opportunities for improvement include above-average rates of children who lack health insurance and below-average percentages of students grades 3rd to 8th rated proficient on TNReady tests in both reading and math.

Policy/Practice/Program Options to Improve Outcomes. Many of these policies have multiple models for delivery, including public-private partnership and non-profit leadership.

- Low birth weight is a persistent and difficult problem, but improvements can occur when care is made available for chronic physical and mental health and substance abuse conditions for women of childbearing age, as well as improving outreach to those who may qualify to receive SNAP, WIC and/or TennCare benefits to be sure they are aware of these services. Additionally, nutrition programs that provide food for school-age children to take home can contribute to nutritionally sound diets for women in their childbearing years. Expanding services through Family Resource Centers can help reach these vulnerable populations.
- Two-generation programs such as evidence-based home visiting have been shown to reduce instances of child abuse and neglect.
- Most uninsured children in Tennessee qualify for either TennCare or CoverKids, so high rates of uninsured children can be improved with outreach to make sure that families are aware of these insurance opportunities. According to Census Bureau estimates, Humphreys County has 144 children who qualify for these health insurance programs but who nonetheless lack insurance.
- Increased access to pre-K can help reading proficiency in later grades. Early assessment of reading skills coupled with appropriate interventions where needed can improve reading proficiency in 3rd to 8th grade. Expanding pre-K access and increasing STEM opportunities in elementary and middle schools can help improve 3rd to 8th grade math proficiency.