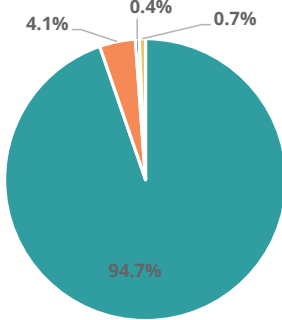


Family & Community

Rank: 46

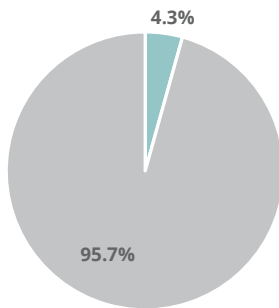
Houston Rank: 33

Child Population by Race

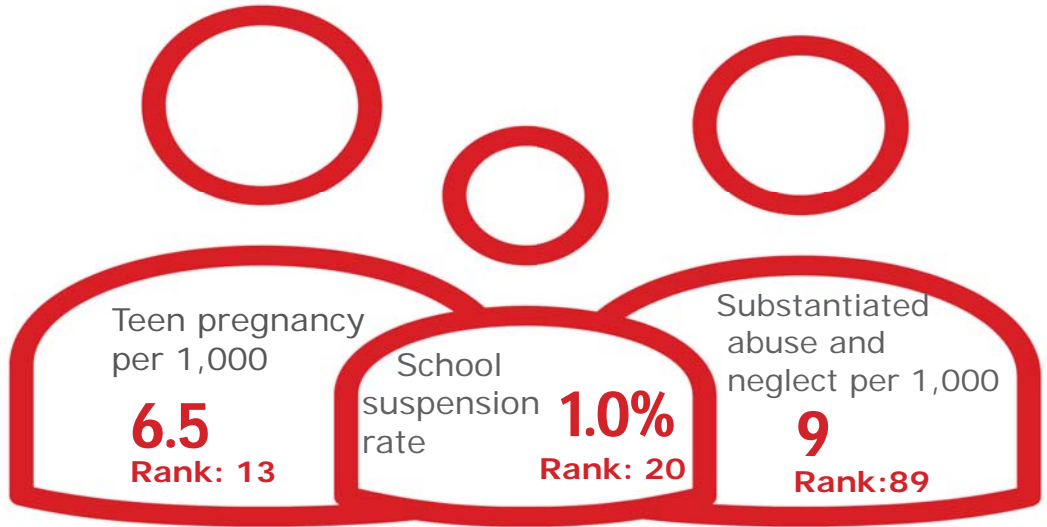


- White, Including Hispanic
- Black, Including Hispanic
- Native American/Alaskan
- Asian/Pacific Islander

Child Population by Hispanic Ethnicity



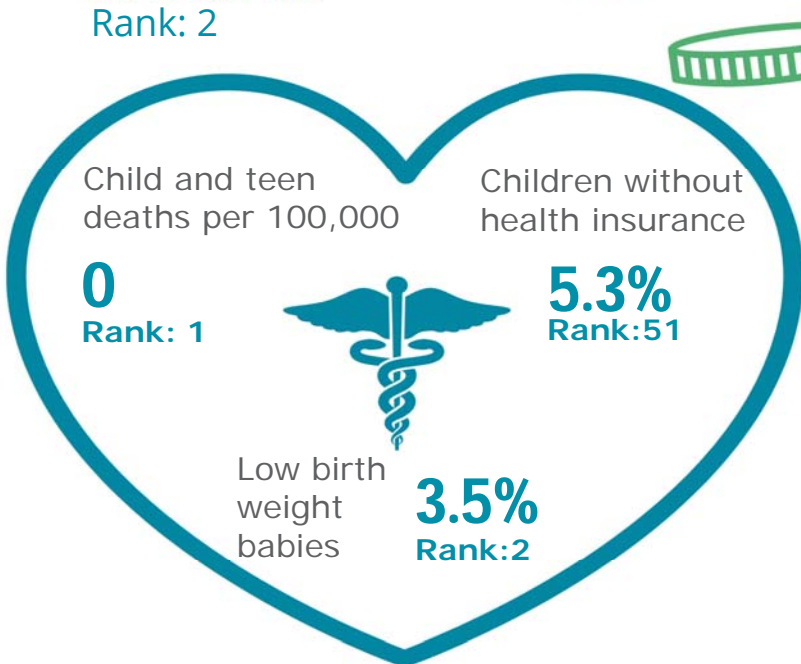
- Hispanic, All Races
- Non-Hispanic



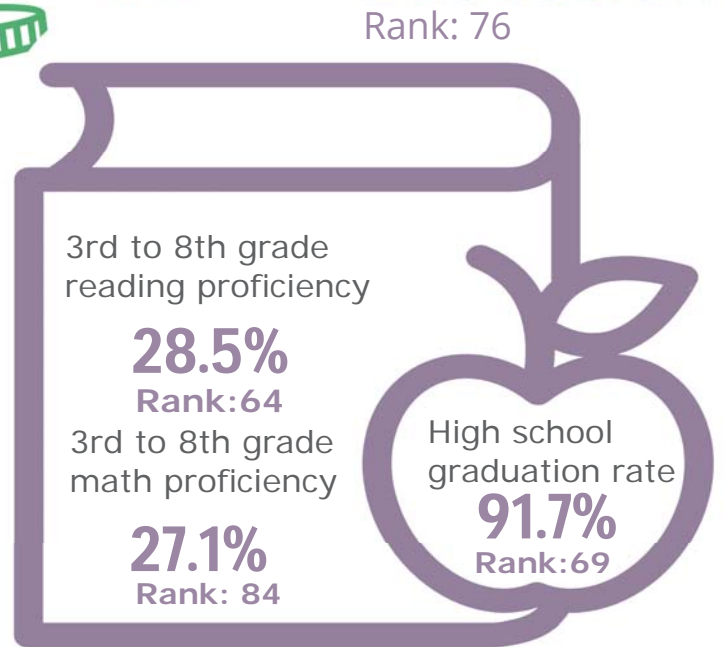
Economic Well-Being Rank: 31



Health Rank: 2








Education Rank: 76



Houston County

Published 1/2021

Demographics 	Houston County		Tennessee Rate	County Rate as a percentage of State Rate	County Rank
	Number	Rate			
Total population (state comparison is number not rate)	8,269	NA	6,769,975	0.1%	88
Population under 18 years of age	1,774	21.5%	22.2%	96.6%	37
Economic Well-Being 	Houston County		Tennessee Rate	County Rate as a percentage of State Rate	County Rank
	Number	Rate			
Youth unemployment	46	33.1%	11.2%	295.5%	95
Per capita personal income (state is dollars not rate)	\$32,822	NA	\$46,900	70.0%	74
Median home sales price (state is dollars not rate)	\$103,500	NA	\$146,000	70.9%	77
Children receiving Families First grants (TANF)	49	2.8%	2.7%	101.8%	49
Children receiving SNAP	512	28.8%	28.2%	102.4%	37
Children under five receiving WIC	239	55.5%	30.6%	181.1%	89
Education 	Houston County		Tennessee Rate	County Rate as a percentage of State Rate	County Rank
	Number	Rate			
School age special education services	177	13.5%	12.3%	109.6%	58
TEIS participation (per 1,000 in age group)	12	48.19	27.9	172.8%	87
Cohort high school dropouts	5	5.4%	8.3%	65.1%	63
Event high school dropouts	6	1.4%	2.2%	63.6%	74
Economically disadvantaged students	772	59.1%	65.1%	90.7%	22
School expulsions (per 1,000 students)	1	1.0	2.0	50.0%	67
Chronic absenteeism	259	19.7%	13.3%	148.1%	87
Young adult college enrollment/completion rate	NA	53.5%	62.5%	85.6%	82
Health 	Houston County		Tennessee Rate	County Rate as a percentage of State Rate	County Rank
	Number	Rate			
Neonatal abstinence syndrome (per 1,000 live births)	0	0.00	11.5	0.0%	1
Births to mothers who smoked during pregnancy	16	18.6%	12.1%	153.7%	32
Children on TennCare (Medicaid)	967	46.8%	44.7%	104.6%	30
Total TennCare (Medicaid) enrollees	1,906	23.0%	19.9%	115.8%	56
Births covered by TennCare (Medicaid)	68	79.1%	65.5%	120.8%	44
Children qualified for Medicaid/CHIP but uninsured	70	6.1%	6.5%	93.8%	45
Infant mortality (per 1,000 live births)	0	0.00	6.9	0.0%	1
Neonatal death (per 1,000 live births)	0	0.00	4.4	0.0%	1
Child deaths (per 100,000 children age 1 to 14)	0	0.00	20.5	0.0%	1
Teen violent deaths (per 100,000 children age 15 to 19)	1	193.10	55.7	346.7%	91
Adequate prenatal care	61	70.9%	58.8%	120.6%	12
Children under age six screened for lead poisoning	93	17.7%	17.1%	103.5%	44
Public school students measured as overweight/obese	NA	37.6%	39.3%	95.7%	15
Teens with STDs (per 1,000 children age 15 to 17)	<5	*	19.0	#VALUE!	*
Medical doctors by county (per 100,000 residents)	3	36.3	229.1	15.8%	67
Dentists by county (per 100,000 residents)	1	12.1	50.1	24.2%	85
Family & Community 	Houston County		Tennessee Rate	County Rate as a percentage of State Rate	County Rank
	Number	Rate			
Reported child abuse cases	82	4.6%	4.7%	99.1%	26
Commitment to state custody (per 1,000 children)	9	4.6	4.1	112.2%	41
Remaining in state custody (per 1,000 children)	9	4.6	5.2	87.8%	35
Juvenile court referrals	47	2.6%	3.5%	75.0%	25
Recorded marriages (per 1,000 residents)	72	8.7	8.0	108.8%	12
Recorded divorces (per 1,000 residents)	26	3.1	3.5	88.6%	29

Houston County

At 33rd, Houston County is in the top third of Tennessee counties in child well-being. Some of the county's strongest rankings include the lowest housing rates in the state, no child or teen deaths in 2018 and the second lowest percent of babies born at a low birth weight. The county's biggest challenges are a high rate of substantiated cases of abuse or neglect and a low percentage of students grades 3rd- 8th rated proficient on TNReady math tests.

Additional strengths include a low rate of pregnancy among girls age 15-17 and a low percentage of school suspensions.

Additional opportunities for improvement include a low high school graduation percentage and one in four children are living in poverty.

Policy/Practice/Program Options to Improve Outcomes. Many of these policies have multiple models for delivery, including public-private partnership and non-profit leadership.

- Two-generation programs such as evidence-based home visiting have been shown to reduce instances of child abuse and neglect.
- Expanding pre-K access and increasing STEM opportunities in elementary and middle schools can help improve 3rd to 8th grade math proficiency.
- Making high school students aware of the community college and technical school benefits available to them through Tennessee Promise can encourage on-time high school graduation.
- With a high rate of child poverty, improving outreach to those who may qualify to receive SNAP and WIC benefits to be sure they are aware of these services can help ensure basic needs are met. Additionally, nutrition programs that provide food for school-age children to take home can contribute to food security. Expanding services through Family Resource Centers can also help reach these vulnerable populations.