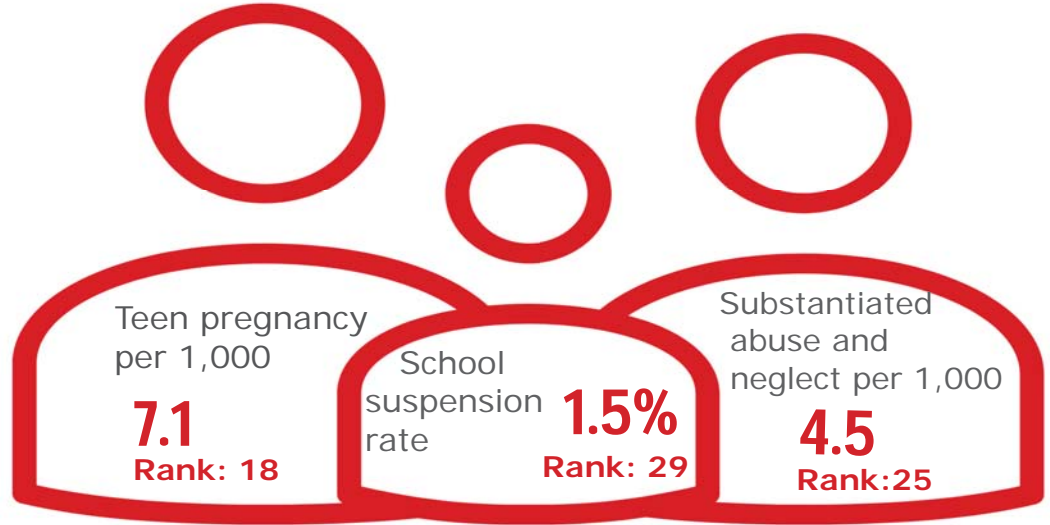




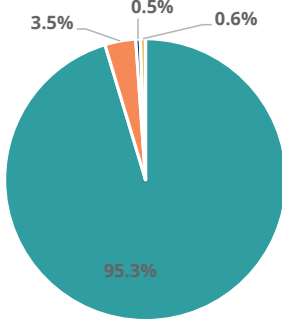
# Family & Community

Rank: 8

# Hickman Rank: 53



Child Population by Race

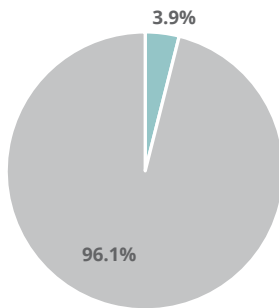


- White, Including Hispanic
- Black, Including Hispanic
- Native American/Alaskan
- Asian/Pacific Islander

# Economic Well-Being

Rank: 55

Child Population by Hispanic Ethnicity

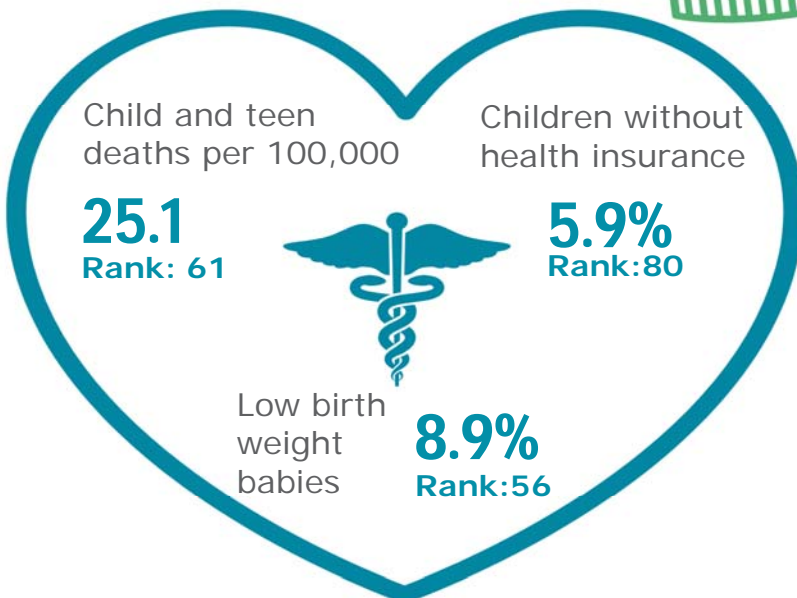


- Hispanic, All Races
- Non-Hispanic



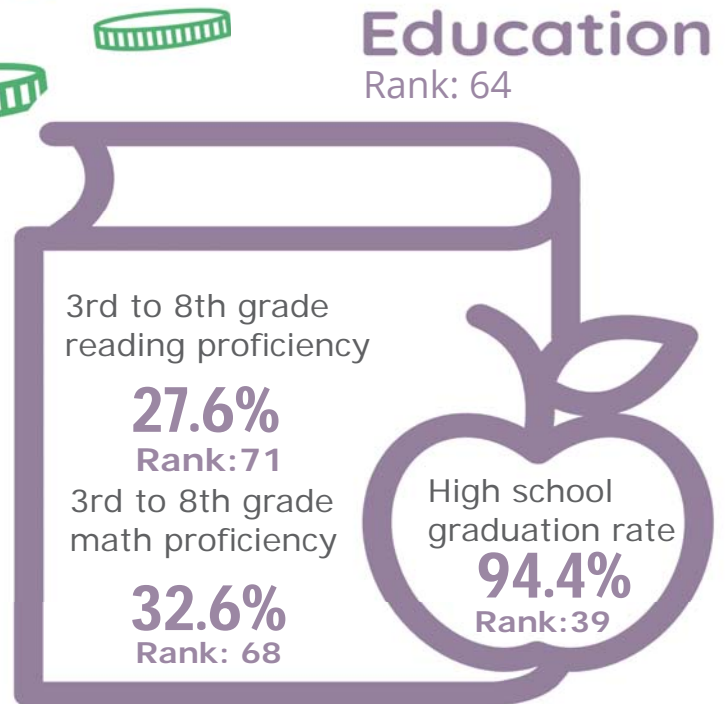
# Health

Rank: 75








# Education

Rank: 64



# Hickman County

Published 1/2021

Demographics 	Hickman County		Tennessee Rate	County Rate as a percentage of State Rate	County Rank
	Number	Rate			
Total population (state comparison is number not rate)	25,048	NA	6,769,975	0.4%	59
Population under 18 years of age	5,166	20.6%	22.2%	92.9%	57
Economic Well-Being 	Hickman County		Tennessee Rate	County Rate as a percentage of State Rate	County Rank
	Number	Rate			
Youth unemployment	17	3.3%	11.2%	29.5%	6
Per capita personal income (state is dollars not rate)	\$32,780	NA	\$46,900	69.9%	75
Median home sales price (state is dollars not rate)	\$136,950	NA	\$146,000	93.8%	46
Children receiving Families First grants (TANF)	152	2.9%	2.7%	108.5%	55
Children receiving SNAP	1,672	32.4%	28.2%	114.9%	58
Children under five receiving WIC	387	27.8%	30.6%	90.9%	12
Education 	Hickman County		Tennessee Rate	County Rate as a percentage of State Rate	County Rank
	Number	Rate			
School age special education services	584	17.8%	12.3%	144.4%	90
TEIS participation (per 1,000 in age group)	23	27.28	27.9	97.8%	39
Cohort high school dropouts	14	5.5%	8.3%	66.3%	64
Event high school dropouts	9	0.9%	2.2%	40.9%	46
Economically disadvantaged students	2,594	78.7%	65.1%	120.9%	65
School expulsions (per 1,000 students)	0	0.0	2.0	0.0%	1
Chronic absenteeism	404	12.3%	13.3%	92.5%	40
Young adult college enrollment/completion rate	NA	57.0%	62.5%	91.2%	63
Health 	Hickman County		Tennessee Rate	County Rate as a percentage of State Rate	County Rank
	Number	Rate			
Neonatal abstinence syndrome (per 1,000 live births)	*	*	11.5	*	*
Births to mothers who smoked during pregnancy	78	30.4%	12.1%	251.2%	94
Children on TennCare (Medicaid)	3,090	51.1%	44.7%	114.3%	48
Total TennCare (Medicaid) enrollees	5,532	22.1%	19.9%	111.0%	44
Births covered by TennCare (Medicaid)	206	80.2%	65.5%	122.4%	55
Children qualified for Medicaid/CHIP but uninsured	219	6.2%	6.5%	95.4%	49
Infant mortality (per 1,000 live births)	2	7.80	6.9	113.0%	65
Neonatal death (per 1,000 live births)	2	7.80	4.4	177.3%	82
Child deaths (per 100,000 children age 1 to 14)	1	25.10	20.5	122.4%	61
Teen violent deaths (per 100,000 children age 15 to 19)	4	270.60	55.7	485.8%	93
Adequate prenatal care	145	56.4%	58.8%	95.9%	69
Children under age six screened for lead poisoning	271	16.3%	17.1%	95.1%	61
Public school students measured as overweight/obese	NA	42.3%	39.3%	107.6%	45
Teens with STDs (per 1,000 children age 15 to 17)	<5	*	19.0	#VALUE!	*
Medical doctors by county (per 100,000 residents)	5	20.0	229.1	8.7%	85
Dentists by county (per 100,000 residents)	3	12.0	50.1	23.9%	86
Family & Community 	Hickman County		Tennessee Rate	County Rate as a percentage of State Rate	County Rank
	Number	Rate			
Reported child abuse cases	422	8.2%	4.7%	175.1%	93
Commitment to state custody (per 1,000 children)	53	9.2	4.1	226.6%	84
Remaining in state custody (per 1,000 children)	51	8.9	5.2	170.6%	74
Juvenile court referrals	636	12.3%	3.5%	348.4%	91
Recorded marriages (per 1,000 residents)	148	5.9	8.0	73.8%	61
Recorded divorces (per 1,000 residents)	102	4.1	3.5	117.1%	67

## Hickman County

At 53<sup>rd</sup>, Hickman County is in the bottom half of Tennessee counties in child well-being. The county's strongest rankings include relatively low rates of pregnancy among girls age 15-17 and low rates of school suspensions. The county's biggest challenges include a comparatively high rate of children without health insurance and a low rate of 3<sup>rd</sup> to 8<sup>th</sup> grade students rated proficient on TNReady reading tests.

Additional strengths include a below-average rate of substantiated cases of abuse or neglect and an above-average high school graduation percentage.

Additional opportunities for improvement include a low percentage of 3<sup>rd</sup> to 8<sup>th</sup> grade students rated proficient in math on TNReady tests and above-average rate of child and teen deaths.

*Policy/Practice/Program Options to Improve Outcomes.* Many of these policies have multiple models for delivery, including public-private partnership and non-profit leadership.

- Most uninsured children in Tennessee qualify for either TennCare or CoverKids, so high rates of uninsured children can be improved with outreach to make sure that families are aware of these insurance opportunities. According to Census Bureau estimates, Hickman County has almost 200 children who qualify for these health insurance programs but who nonetheless lack insurance.
- Increased access to pre-K can help both math and reading proficiency in later grades. Early assessment of reading skills coupled with appropriate interventions where needed can improve reading proficiency in 3<sup>rd</sup> to 8<sup>th</sup> grade. Increasing STEM opportunities in elementary and middle schools can help improve 3<sup>rd</sup> to 8<sup>th</sup> grade math proficiency.
- Child and teen deaths can be reduced with consistent enforcement of safety measures like proper car seat and seat belt use, bicycle helmet use and life preserver use around water. The fastest-growing cause of child and teen deaths in recent years has been homicide and suicide, often involving a firearm. Families who own firearms can reduce the risk to children and teens by following safe storage practices.