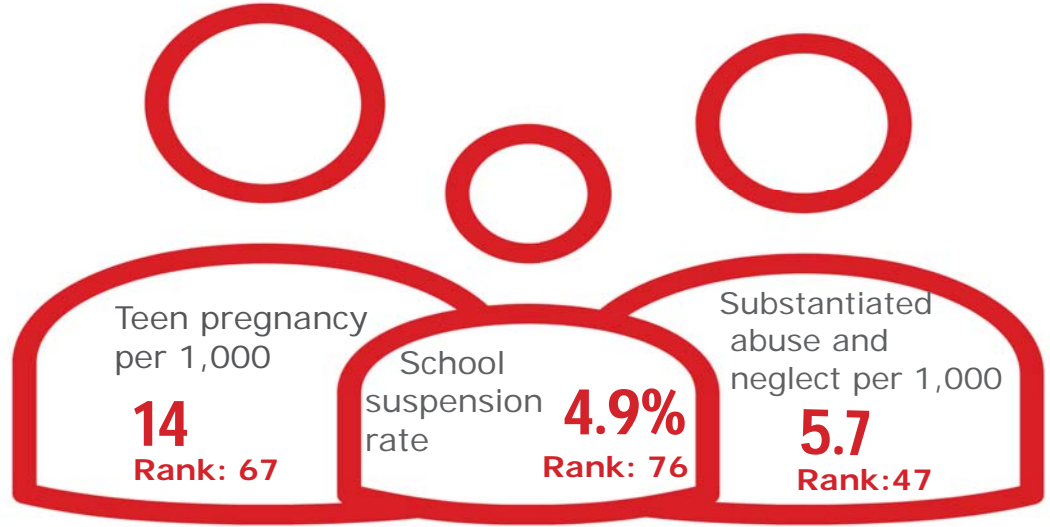


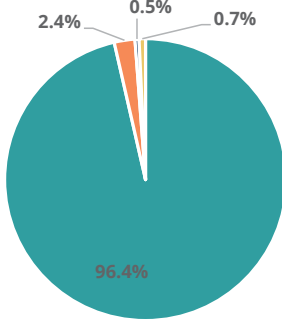
Family & Community

Rank: 70

Hawkins Rank: 44



Child Population by Race

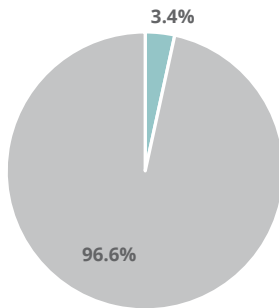


- White, Including Hispanic
- Black, Including Hispanic
- Native American/Alaskan
- Asian/Pacific Islander

Economic Well-Being Rank: 71

Rank: 71

Child Population by Hispanic Ethnicity

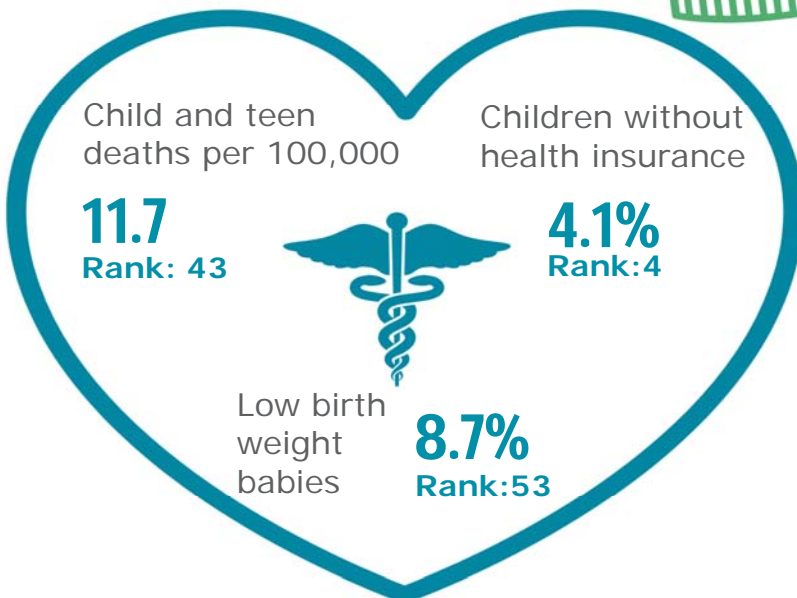


- Hispanic, All Races
- Non-Hispanic



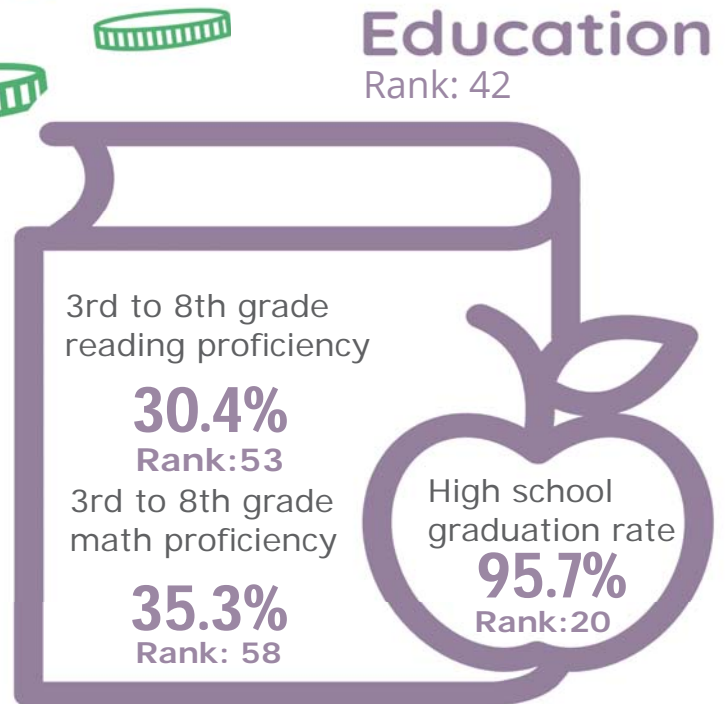
Health Rank: 9

Rank: 9








Education Rank: 42

Rank: 42



Hawkins County

Published 1/2021

Demographics 	Hawkins County		Tennessee Rate	County Rate as a percentage of State Rate	County Rank
	Number	Rate			
Total population (state comparison is number not rate)	56,526	NA	6,769,975	0.8%	24
Population under 18 years of age	11,117	19.7%	22.2%	88.6%	73
Economic Well-Being 	Hawkins County		Tennessee Rate	County Rate as a percentage of State Rate	County Rank
	Number	Rate			
Youth unemployment	123	12.0%	11.2%	107.1%	49
Per capita personal income (state is dollars not rate)	\$34,188	NA	\$46,900	72.9%	62
Median home sales price (state is dollars not rate)	\$125,000	NA	\$146,000	85.6%	57
Children receiving Families First grants (TANF)	444	4.0%	2.7%	147.3%	81
Children receiving SNAP	3,744	33.7%	28.2%	119.6%	65
Children under five receiving WIC	1,276	47.1%	30.6%	153.9%	69
Education 	Hawkins County		Tennessee Rate	County Rate as a percentage of State Rate	County Rank
	Number	Rate			
School age special education services	1,066	14.7%	12.3%	119.8%	74
TEIS participation (per 1,000 in age group)	73	45.12	27.9	161.8%	83
Cohort high school dropouts	12	2.1%	8.3%	25.3%	18
Event high school dropouts	13	0.6%	2.2%	27.3%	21
Economically disadvantaged students	4,825	67.5%	65.1%	103.6%	46
School expulsions (per 1,000 students)	8	1.0	2.0	50.0%	67
Chronic absenteeism	1,095	15.3%	13.3%	115.0%	71
Young adult college enrollment/completion rate	NA	58.2%	62.5%	93.1%	56
Health 	Hawkins County		Tennessee Rate	County Rate as a percentage of State Rate	County Rank
	Number	Rate			
Neonatal abstinence syndrome (per 1,000 live births)	21	41.34	11.5	360.0%	53
Births to mothers who smoked during pregnancy	131	25.8%	12.1%	213.2%	81
Children on TennCare (Medicaid)	6,791	52.2%	44.7%	116.8%	54
Total TennCare (Medicaid) enrollees	12,706	22.5%	19.9%	113.0%	48
Births covered by TennCare (Medicaid)	428	84.3%	65.5%	128.7%	75
Children qualified for Medicaid/CHIP but uninsured	330	4.4%	6.5%	67.7%	3
Infant mortality (per 1,000 live births)	2	3.90	6.9	56.5%	28
Neonatal death (per 1,000 live births)	1	2.00	4.4	45.5%	38
Child deaths (per 100,000 children age 1 to 14)	1	11.70	20.5	57.1%	43
Teen violent deaths (per 100,000 children age 15 to 19)	0	0.00	55.7	0.0%	1
Adequate prenatal care	280	55.1%	58.8%	93.7%	72
Children under age six screened for lead poisoning	647	19.8%	17.1%	115.6%	30
Public school students measured as overweight/obese	NA	45.8%	39.3%	116.5%	76
Teens with STDs (per 1,000 children age 15 to 17)	23	11.4	19.0	59.9%	36
Medical doctors by county (per 100,000 residents)	18	31.8	229.1	13.9%	72
Dentists by county (per 100,000 residents)	9	15.9	50.1	31.8%	72
Family & Community 	Hawkins County		Tennessee Rate	County Rate as a percentage of State Rate	County Rank
	Number	Rate			
Reported child abuse cases	707	6.4%	4.7%	136.3%	77
Commitment to state custody (per 1,000 children)	41	3.3	4.1	81.3%	27
Remaining in state custody (per 1,000 children)	55	4.4	5.2	85.4%	32
Juvenile court referrals	595	5.4%	3.5%	151.5%	70
Recorded marriages (per 1,000 residents)	331	5.9	8.0	73.8%	61
Recorded divorces (per 1,000 residents)	257	4.5	3.5	128.6%	79

Hawkins County

At 44th, Hawkins County is in the top half of Tennessee counties in child well-being. Some of the county's strongest rankings include one of the lowest rates in the state of children without health insurance and a strong high school graduation rate. The county's biggest challenges are an above-average rate of school suspension and over a fourth of children are living in poverty.

Additional strengths include a below-average cost of housing and rate of child and teen deaths.

Additional opportunities for improvement include a low median household income and an above-average rate of pregnancy among girls age 15-17.

Policy/Practice/Program Options to Improve Outcomes. Many of these policies have multiple models for delivery, including public-private partnership and non-profit leadership.

- Suspension rates can be reduced through clear definitions of what constitutes suspendable behavior and a focus on restorative discipline practices that aim to improve behavior while keeping children in school.
- Counties can support children who live in poverty by improving outreach to those who may qualify to receive SNAP, WIC and/or TennCare benefits to be sure they are aware of these services. Additionally, especially with low incomes, nutrition programs that provide food for school-age children to take home can contribute to nutritionally sound diets. Expanding services through Family Resource Centers can also help reach these vulnerable populations.
- Comprehensive sex education classes that include both encouragement of abstinence and information on birth control have been shown to reduce the number of teen pregnancies.