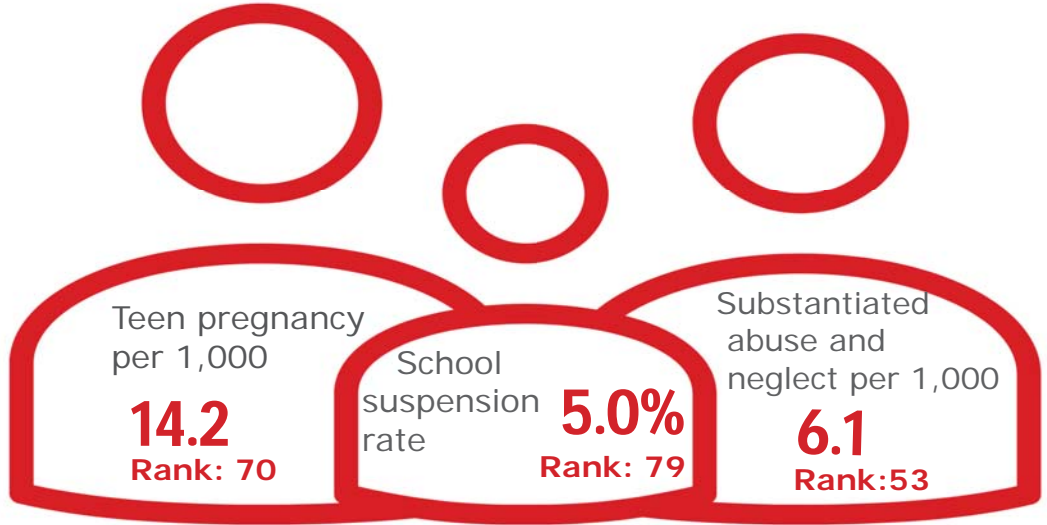


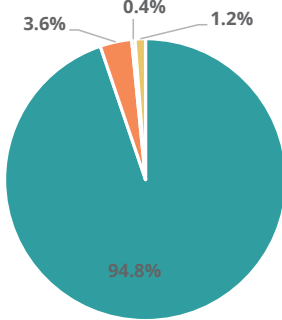
# Family & Community

Rank: 76

# Greene Rank: 41



Child Population by Race

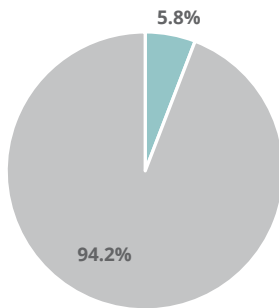


- White, Including Hispanic
- Black, Including Hispanic
- Native American/Alaskan
- Asian/Pacific Islander

# Economic Well-Being

Rank: 26

Child Population by Hispanic Ethnicity

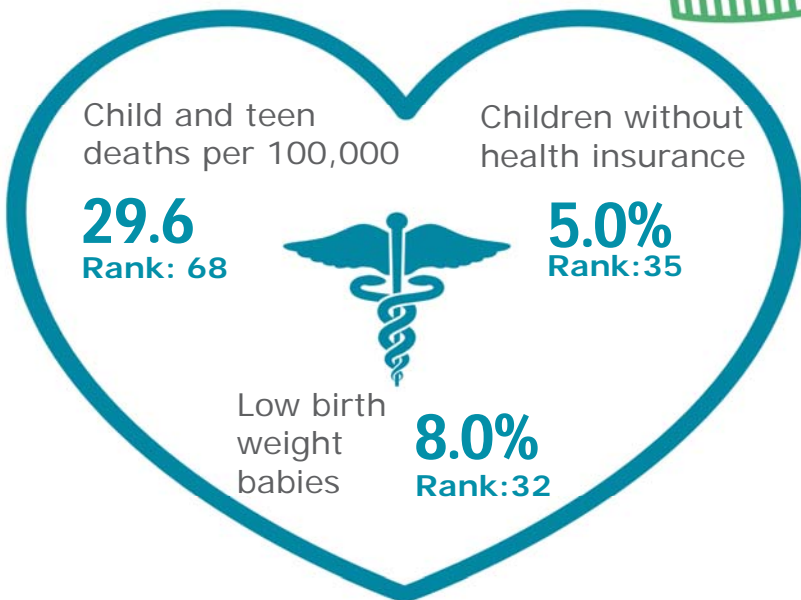


- Hispanic, All Races
- Non-Hispanic



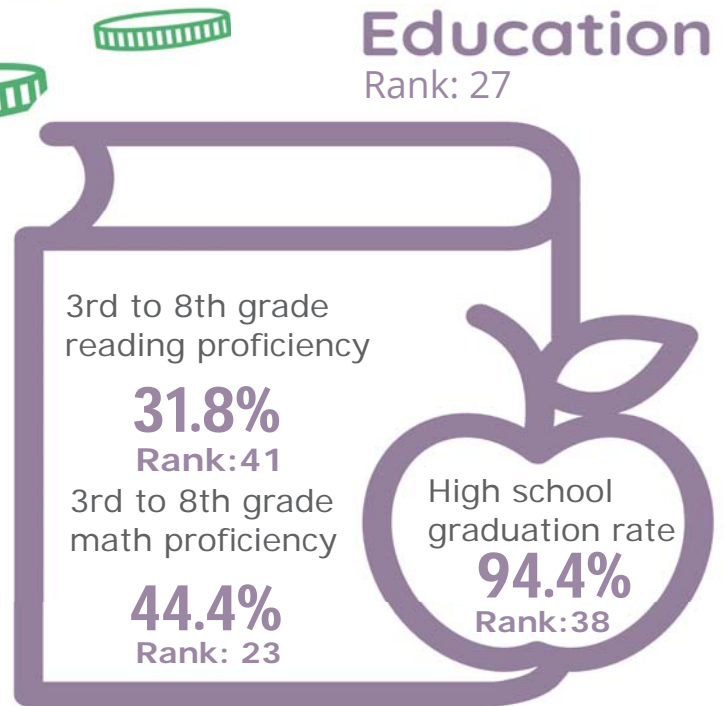
# Health

Rank: 41








# Education

Rank: 27



# Greene County

Published 1/2021

Demographics 	Greene County		Tennessee Rate	County Rate as a percentage of State Rate	County Rank
	Number	Rate			
Total population (state comparison is number not rate)	69,089	NA	6,769,975	1.0%	20
Population under 18 years of age	13,338	19.3%	22.2%	87.0%	77
Economic Well-Being 	Greene County		Tennessee Rate	County Rate as a percentage of State Rate	County Rank
	Number	Rate			
Youth unemployment	137	10.5%	11.2%	93.8%	38
Per capita personal income (state is dollars not rate)	\$39,971	NA	\$46,900	85.2%	29
Median home sales price (state is dollars not rate)	\$130,000	NA	\$146,000	89.0%	50
Children receiving Families First grants (TANF)	486	3.6%	2.7%	134.5%	71
Children receiving SNAP	3,477	26.1%	28.2%	92.6%	22
Children under five receiving WIC	1,628	48.6%	30.6%	158.7%	74
Education 	Greene County		Tennessee Rate	County Rate as a percentage of State Rate	County Rank
	Number	Rate			
School age special education services	1,452	15.8%	12.3%	128.1%	85
TEIS participation (per 1,000 in age group)	75	36.87	27.9	132.2%	67
Cohort high school dropouts	23	3.1%	8.3%	37.2%	29
Event high school dropouts	19	0.6%	2.2%	26.5%	20
Economically disadvantaged students	6,114	66.7%	65.1%	102.5%	42
School expulsions (per 1,000 students)	0	0.0	2.0	0.0%	1
Chronic absenteeism	721	7.7%	13.3%	57.9%	8
Young adult college enrollment/completion rate	NA	57.5%	62.5%	92.0%	61
Health 	Greene County		Tennessee Rate	County Rate as a percentage of State Rate	County Rank
	Number	Rate			
Neonatal abstinence syndrome (per 1,000 live births)	10	14.33	11.5	124.8%	35
Births to mothers who smoked during pregnancy	160	22.9%	12.1%	189.3%	64
Children on TennCare (Medicaid)	8,026	50.9%	44.7%	113.7%	46
Total TennCare (Medicaid) enrollees	15,039	21.8%	19.9%	109.4%	42
Births covered by TennCare (Medicaid)	571	81.8%	65.5%	125.0%	61
Children qualified for Medicaid/CHIP but uninsured	464	5.4%	6.5%	83.1%	21
Infant mortality (per 1,000 live births)	5	7.20	6.9	104.3%	60
Neonatal death (per 1,000 live births)	3	4.30	4.4	97.7%	63
Child deaths (per 100,000 children age 1 to 14)	3	29.60	20.5	144.4%	68
Teen violent deaths (per 100,000 children age 15 to 19)	3	72.40	55.7	130.0%	69
Adequate prenatal care	462	66.2%	58.8%	112.6%	35
Children under age six screened for lead poisoning	954	23.7%	17.1%	138.7%	14
Public school students measured as overweight/obese	NA	43.8%	39.3%	111.5%	56
Teens with STDs (per 1,000 children age 15 to 17)	25	10.0	19.0	52.7%	29
Medical doctors by county (per 100,000 residents)	69	99.9	229.1	43.6%	17
Dentists by county (per 100,000 residents)	20	28.9	50.1	57.8%	40
Family & Community 	Greene County		Tennessee Rate	County Rate as a percentage of State Rate	County Rank
	Number	Rate			
Reported child abuse cases	850	6.4%	4.7%	136.6%	78
Commitment to state custody (per 1,000 children)	103	6.9	4.1	169.1%	68
Remaining in state custody (per 1,000 children)	131	8.7	5.2	168.3%	71
Juvenile court referrals	658	4.9%	3.5%	139.6%	66
Recorded marriages (per 1,000 residents)	423	6.1	8.0	76.3%	54
Recorded divorces (per 1,000 residents)	273	4.0	3.5	114.3%	62

## Greene County

At 41<sup>st</sup>, Greene County is in the top half of Tennessee counties in child well-being. The county's best rankings come a low housing costs and a relatively high rate of students grades 3<sup>rd</sup> to 8<sup>th</sup> rated proficient on TNReady math tests. The county's biggest challenges are high rates of school suspensions and pregnancy among girls age 15-17.

Additional strengths include relatively low rates of children without health insurance and a strong high school graduation rate.

Additional challenges include a high rate of substantiated cases of abuse or neglect and a high rate of child and teen deaths.

*Policy/Practice/Program Options to Improve Outcomes.* Many of these policies have multiple models for delivery, including public-private partnership and non-profit leadership.

- Suspension rates can be reduced through clear definitions of what constitutes suspendable behavior and a focus on restorative discipline practices that aim to improve behavior while keeping children in school.
- Comprehensive sex education classes that include both encouragement of abstinence and information on birth control have been shown to reduce the number of teen pregnancies
- Two-generation programs such as evidence-based home visiting have been shown to reduce instances of child abuse and neglect.
- Child and teen deaths can be reduced with consistent enforcement of safety measures like proper car seat and seat belt use, bicycle helmet use and life preserver use around water. The fastest-growing cause of child and teen deaths in recent years has been homicide and suicide, often involving a firearm. Families who own firearms can reduce the risk to children and teens by following safe storage practices.