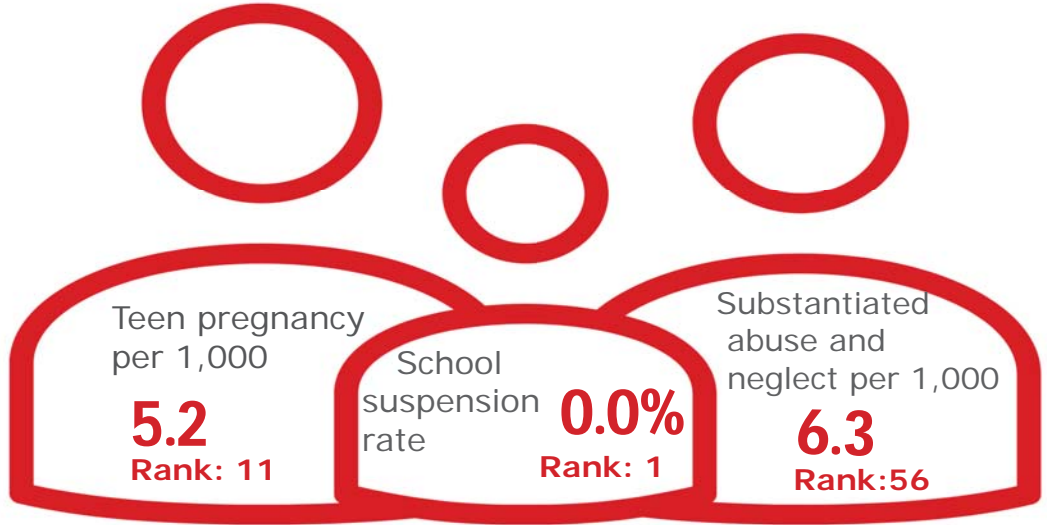


Family & Community

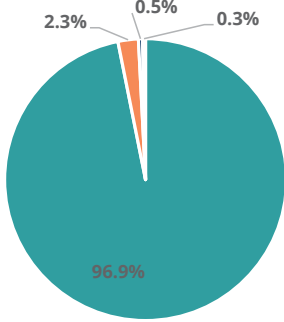
Rank: 9

Grainger

Rank: 31



Child Population by Race

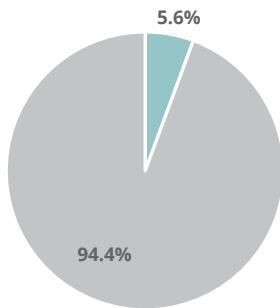


- White, Including Hispanic
- Black, Including Hispanic
- Native American/Alaskan
- Asian/Pacific Islander

Economic Well-Being

Rank: 52

Child Population by Hispanic Ethnicity

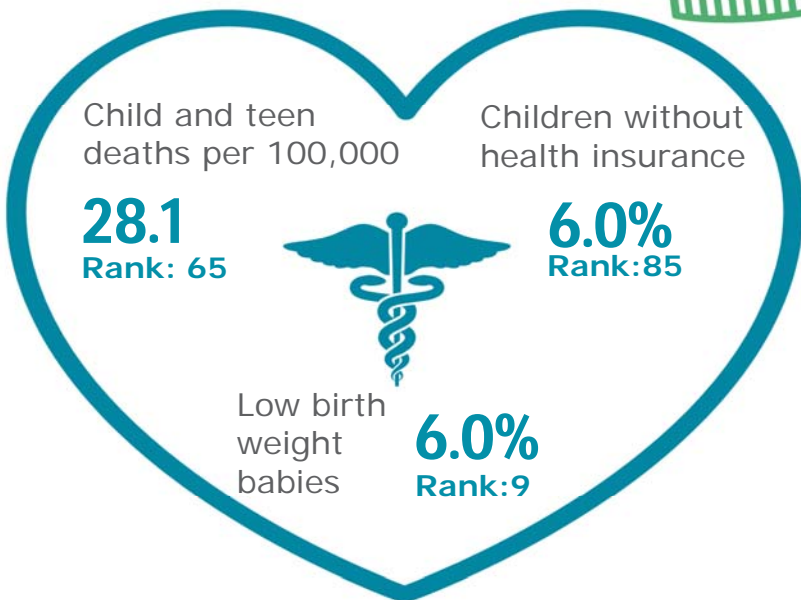


- Hispanic, All Races
- Non-Hispanic



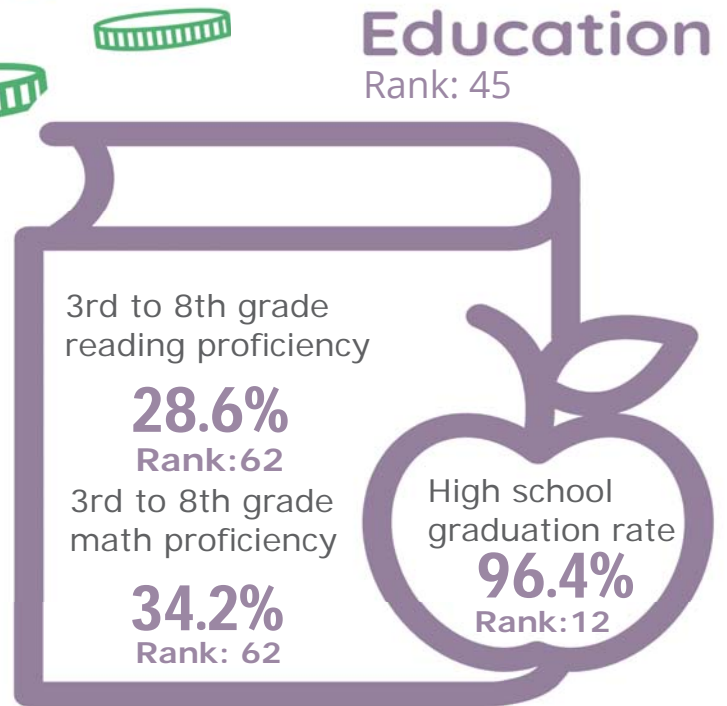
Health

Rank: 50








Education

Rank: 45



Grainger County

Published 1/2021

Demographics 	Grainger County		Tennessee Rate	County Rate as a percentage of State Rate	County Rank
	Number	Rate			
Total population (state comparison is number not rate)	23,137	NA	6,769,975	0.3%	61
Population under 18 years of age	4,621	20.0%	22.2%	90.0%	69
Economic Well-Being 	Grainger County		Tennessee Rate	County Rate as a percentage of State Rate	County Rank
	Number	Rate			
Youth unemployment	102	26.2%	11.2%	233.9%	91
Per capita personal income (state is dollars not rate)	\$33,490	NA	\$46,900	71.4%	71
Median home sales price (state is dollars not rate)	\$139,900	NA	\$146,000	95.8%	45
Children receiving Families First grants (TANF)	111	2.4%	2.7%	88.3%	34
Children receiving SNAP	1,505	32.6%	28.2%	115.6%	61
Children under five receiving WIC	593	51.5%	30.6%	168.1%	79
Education 	Grainger County		Tennessee Rate	County Rate as a percentage of State Rate	County Rank
	Number	Rate			
School age special education services	524	15.4%	12.3%	125.5%	84
TEIS participation (per 1,000 in age group)	17	24.67	27.9	88.5%	29
Cohort high school dropouts	4	1.6%	8.3%	19.3%	13
Event high school dropouts	6	0.5%	2.2%	22.7%	15
Economically disadvantaged students	2,260	66.9%	65.1%	102.8%	44
School expulsions (per 1,000 students)	0	0.0	2.0	0.0%	1
Chronic absenteeism	541	16.1%	13.3%	121.1%	75
Young adult college enrollment/completion rate	NA	52.4%	62.5%	83.8%	87
Health 	Grainger County		Tennessee Rate	County Rate as a percentage of State Rate	County Rank
	Number	Rate			
Neonatal abstinence syndrome (per 1,000 live births)	13	55.32	11.5	481.8%	60
Births to mothers who smoked during pregnancy	44	18.7%	12.1%	154.5%	33
Children on TennCare (Medicaid)	3,030	56.2%	44.7%	125.5%	74
Total TennCare (Medicaid) enrollees	5,727	24.8%	19.9%	124.4%	73
Births covered by TennCare (Medicaid)	208	88.5%	65.5%	135.2%	84
Children qualified for Medicaid/CHIP but uninsured	213	6.9%	6.5%	106.2%	73
Infant mortality (per 1,000 live births)	1	4.30	6.9	62.3%	31
Neonatal death (per 1,000 live births)	1	4.30	4.4	97.7%	63
Child deaths (per 100,000 children age 1 to 14)	1	28.10	20.5	137.1%	65
Teen violent deaths (per 100,000 children age 15 to 19)	0	0.00	55.7	0.0%	1
Adequate prenatal care	160	68.1%	58.8%	115.8%	26
Children under age six screened for lead poisoning	174	12.5%	17.1%	73.2%	79
Public school students measured as overweight/obese	NA	51.7%	39.3%	131.6%	92
Teens with STDs (per 1,000 children age 15 to 17)	<5	*	19.0	#VALUE!	*
Medical doctors by county (per 100,000 residents)	4	17.3	229.1	7.5%	87
Dentists by county (per 100,000 residents)	2	8.6	50.1	17.3%	88
Family & Community 	Grainger County		Tennessee Rate	County Rate as a percentage of State Rate	County Rank
	Number	Rate			
Reported child abuse cases	243	5.3%	4.7%	112.7%	42
Commitment to state custody (per 1,000 children)	11	2.1	4.1	52.6%	8
Remaining in state custody (per 1,000 children)	11	2.1	5.2	41.1%	7
Juvenile court referrals	173	3.7%	3.5%	105.9%	45
Recorded marriages (per 1,000 residents)	115	5.0	8.0	62.5%	88
Recorded divorces (per 1,000 residents)	79	3.4	3.5	97.1%	38

Grainger County

At 31st, Grainger County is in the top third of Tennessee counties in child well-being. The county's best rankings come from having no school suspensions and a relatively low rate of babies born at a low birth weight. The county's biggest challenges are high rates of child and teen deaths and a high percentage of children that lack health insurance.

Additional strengths are a strong high school graduation rate and a relatively low rate of pregnancy among girls age 15-17.

Additional opportunities for improvement are low rates of 3rd to 8th grade students rated as proficient in both reading and math on TNReady tests and a relatively low median household income.

Policy/Practice/Program Options to Improve Outcomes. Many of these policies have multiple models for delivery, including public-private partnership and non-profit leadership.

- Most uninsured children in Tennessee qualify for either TennCare or CoverKids, so high rates of uninsured children can be improved with outreach to make sure that families are aware of these insurance opportunities. According to Census Bureau estimates, Grainger County has 213 children who qualify for these health insurance programs but who nonetheless lack insurance.
- Child and teen deaths can be reduced with consistent enforcement of safety measures like proper car seat and seat belt use, bicycle helmet use and life preserver use around water. The fastest-growing cause of child and teen deaths in recent years has been homicide and suicide, often involving a firearm. Families who own firearms can reduce the risk to children and teens by following safe storage practices.
- Increased access to pre-K can help both math and reading proficiency in later grades. Early assessment of reading skills coupled with appropriate interventions where needed can improve reading proficiency, while increasing STEM opportunities in elementary and middle schools can help improve 3rd to 8th grade math proficiency.
- With a low median household income, improving outreach to those who may qualify to receive SNAP, WIC and TennCare benefits to be sure they are aware of these services can help ensure basic needs are met. Additionally, nutrition programs that provide food for school-age children to take home can contribute to food security. Expanding services through Family Resource Centers can also help reach these vulnerable populations.