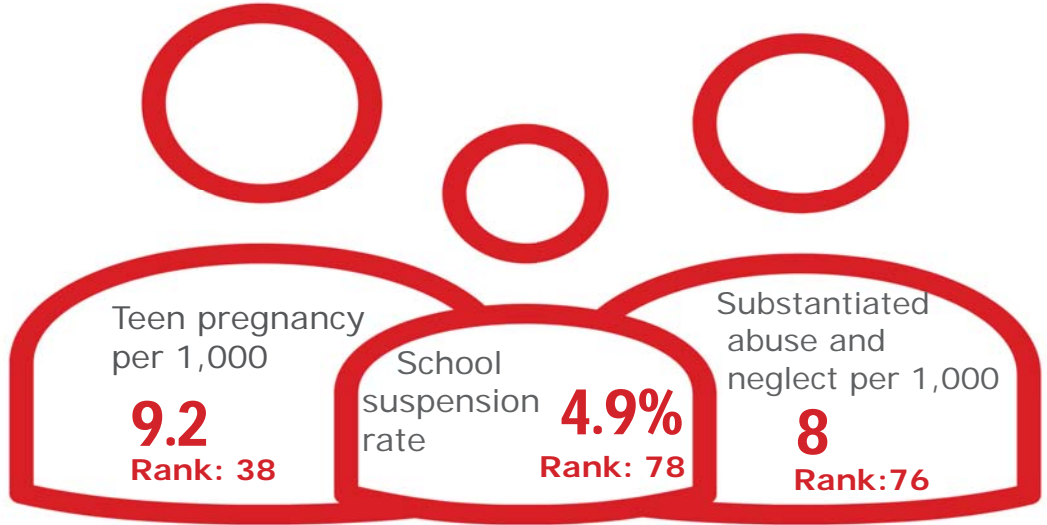




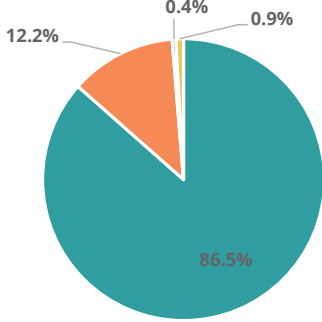
# Family & Community

Rank: 81

## Giles Rank: 58



Child Population by Race

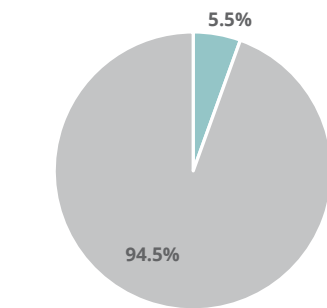


- White, Including Hispanic
- Black, Including Hispanic
- Native American/Alaskan
- Asian/Pacific Islander

## Economic Well-Being Rank: 24

Rank: 24

Child Population by Hispanic Ethnicity

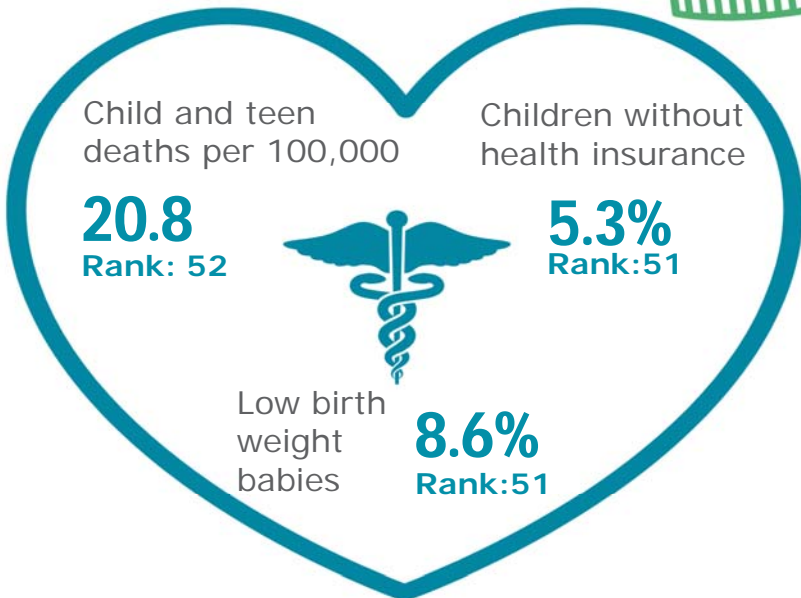


- Hispanic, All Races
- Non-Hispanic



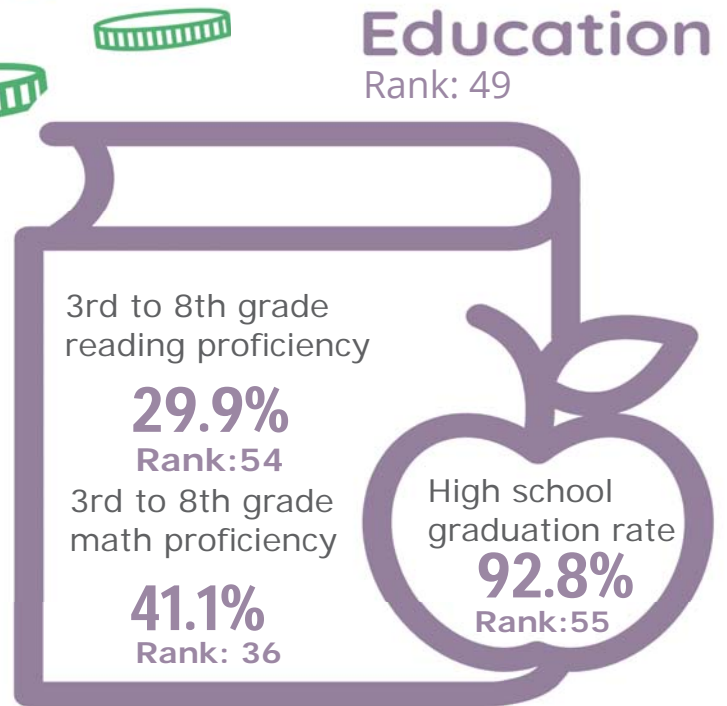
## Health Rank: 49

Rank: 49








## Education Rank: 49

Rank: 49



# Giles County

Published 1/2021

Demographics 	Giles County		Tennessee Rate	County Rate as a percentage of State Rate	County Rank
	Number	Rate			
Total population (state comparison is number not rate)	29,504	NA	6,769,975	0.4%	50
Population under 18 years of age	6,253	21.2%	22.2%	95.5%	44
Economic Well-Being 	Giles County		Tennessee Rate	County Rate as a percentage of State Rate	County Rank
	Number	Rate			
Youth unemployment	110	16.8%	11.2%	150.0%	71
Per capita personal income (state is dollars not rate)	\$38,766	NA	\$46,900	82.7%	37
Median home sales price (state is dollars not rate)	\$128,500	NA	\$146,000	88.0%	52
Children receiving Families First grants (TANF)	119	1.9%	2.7%	70.2%	14
Children receiving SNAP	1,726	27.6%	28.2%	98.0%	29
Children under five receiving WIC	548	32.9%	30.6%	107.4%	26
Education 	Giles County		Tennessee Rate	County Rate as a percentage of State Rate	County Rank
	Number	Rate			
School age special education services	388	10.4%	12.3%	84.2%	5
TEIS participation (per 1,000 in age group)	20	19.86	27.9	71.2%	16
Cohort high school dropouts	16	5.7%	8.3%	68.7%	66
Event high school dropouts	8	0.7%	2.2%	31.8%	29
Economically disadvantaged students	2,934	79.3%	65.1%	121.8%	66
School expulsions (per 1,000 students)	0	0.0	2.0	0.0%	1
Chronic absenteeism	397	10.7%	13.3%	80.5%	29
Young adult college enrollment/completion rate	NA	51.5%	62.5%	82.4%	88
Health 	Giles County		Tennessee Rate	County Rate as a percentage of State Rate	County Rank
	Number	Rate			
Neonatal abstinence syndrome (per 1,000 live births)	0	0.00	11.5	0.0%	1
Births to mothers who smoked during pregnancy	69	23.6%	12.1%	195.0%	70
Children on TennCare (Medicaid)	3,336	45.6%	44.7%	101.9%	26
Total TennCare (Medicaid) enrollees	5,949	20.2%	19.9%	101.3%	30
Births covered by TennCare (Medicaid)	223	76.4%	65.5%	116.7%	37
Children qualified for Medicaid/CHIP but uninsured	237	6.1%	6.5%	93.8%	45
Infant mortality (per 1,000 live births)	0	0.00	6.9	0.0%	1
Neonatal death (per 1,000 live births)	0	0.00	4.4	0.0%	1
Child deaths (per 100,000 children age 1 to 14)	1	20.80	20.5	101.5%	52
Teen violent deaths (per 100,000 children age 15 to 19)	1	54.80	55.7	98.4%	61
Adequate prenatal care	175	59.9%	58.8%	101.9%	58
Children under age six screened for lead poisoning	374	18.7%	17.1%	109.4%	41
Public school students measured as overweight/obese	NA	44.4%	39.3%	113.0%	65
Teens with STDs (per 1,000 children age 15 to 17)	15	13.6	19.0	71.6%	47
Medical doctors by county (per 100,000 residents)	15	50.8	229.1	22.2%	43
Dentists by county (per 100,000 residents)	10	33.9	50.1	67.7%	31
Family & Community 	Giles County		Tennessee Rate	County Rate as a percentage of State Rate	County Rank
	Number	Rate			
Reported child abuse cases	347	5.5%	4.7%	118.9%	51
Commitment to state custody (per 1,000 children)	75	10.8	4.1	264.5%	89
Remaining in state custody (per 1,000 children)	88	12.6	5.2	242.9%	88
Juvenile court referrals	366	5.9%	3.5%	165.6%	73
Recorded marriages (per 1,000 residents)	252	8.5	8.0	106.3%	15
Recorded divorces (per 1,000 residents)	124	4.2	3.5	120.0%	69

## Giles County

At 58<sup>th</sup>, Giles County is in the bottom half of Tennessee counties in child well-being. The county's best rankings reflect a relatively high rate of 3<sup>rd</sup> to 8<sup>th</sup> grade students rated as proficient in reading on TNReady tests and a relatively high household income. The county's biggest challenges are a high suspension rate and a high rate of substantiated cases of abuse or neglect.

Additional strengths include a relatively low rate of pregnancy among girls age 15-17 and a relatively low rate of child poverty.

Additional opportunities for improvement include relatively low rates of high school graduation and a relatively low rate of 3<sup>rd</sup> to 8<sup>th</sup> grade students rated as proficient in math on TNReady tests.

*Policy/Practice/Program Options to Improve Outcomes.* Many of these policies have multiple models for delivery, including public-private partnership and non-profit leadership.

- Suspension rates can be reduced through clear definitions of what constitutes suspendable behavior and a focus on restorative discipline practices that aim to improve behavior while keeping children in school.
- Two-generation programs such as evidence-based home visiting have been shown to reduce instances of child abuse and neglect.
- Making high school students aware of the community college and technical school benefits available to them through Tennessee Promise can encourage on-time high school graduation.
- Expanding pre-K access and increasing STEM opportunities in elementary and middle schools can help improve 3<sup>rd</sup> to 8<sup>th</sup> grade math proficiency.