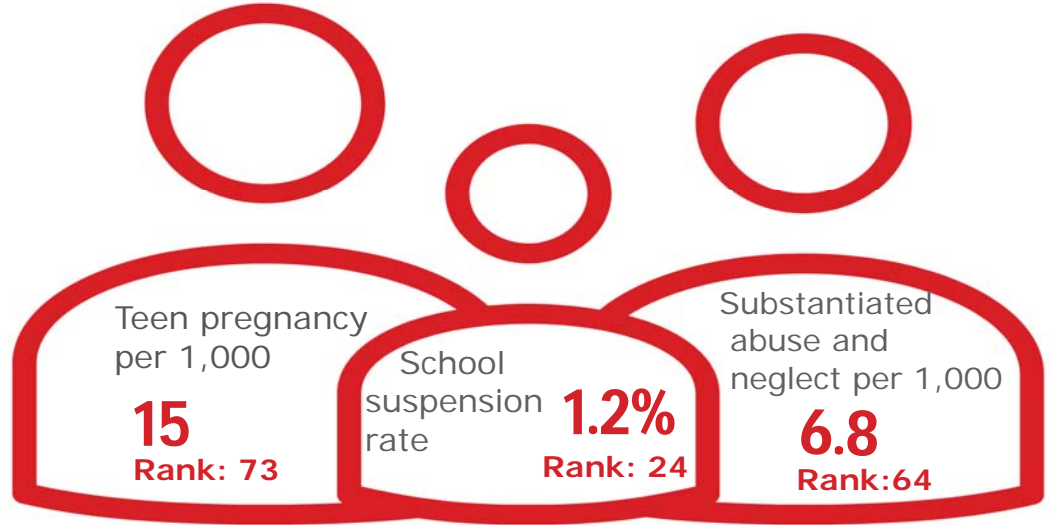


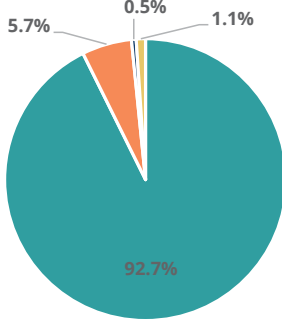
Family & Community

Rank: 51

Dickson Rank: 21



Child Population by Race

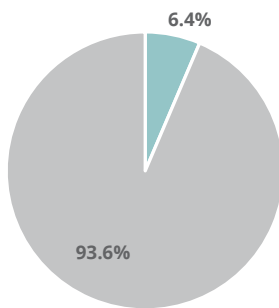


- White, Including Hispanic
- Black, Including Hispanic
- Native American/Alaskan
- Asian/Pacific Islander

Economic Well-Being

Rank: 72

Child Population by Hispanic Ethnicity

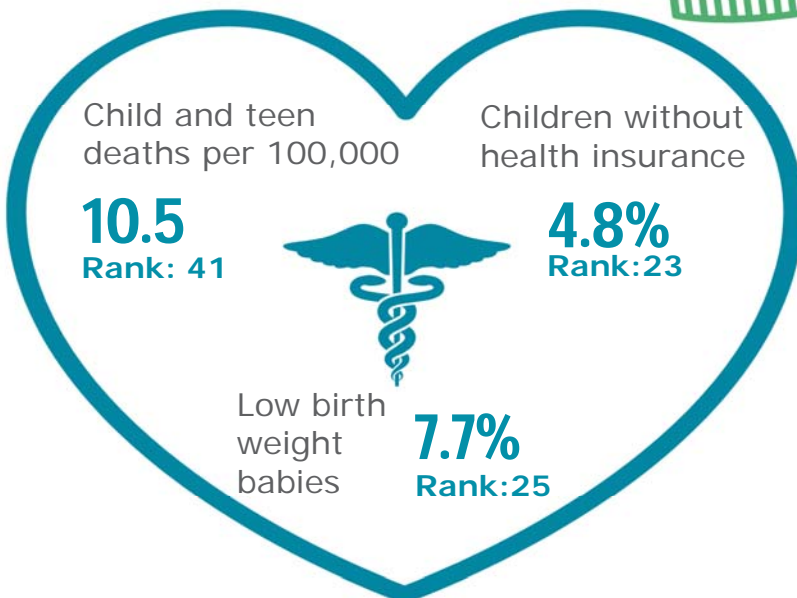


- Hispanic, All Races
- Non-Hispanic



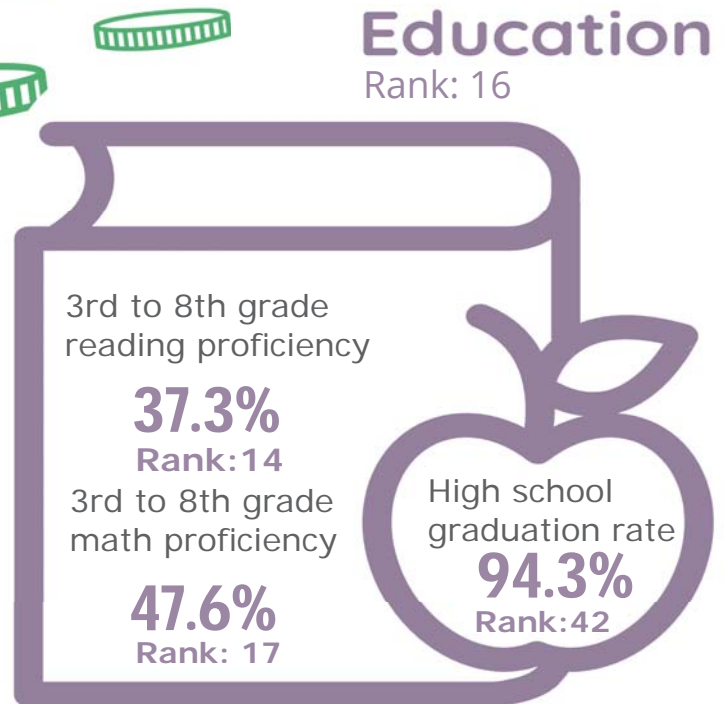
Health

Rank: 17








Education

Rank: 16



Dickson County

Published 1/2021

Demographics 	Dickson County		Tennessee Rate	County Rate as a percentage of State Rate	County Rank
	Number	Rate			
Total population (state comparison is number not rate)	53,439	NA	6,769,975	0.8%	28
Population under 18 years of age	12,172	22.8%	22.2%	102.6%	23
Economic Well-Being 	Dickson County		Tennessee Rate	County Rate as a percentage of State Rate	County Rank
	Number	Rate			
Youth unemployment	74	6.4%	11.2%	57.1%	13
Per capita personal income (state is dollars not rate)	\$40,556	NA	\$46,900	86.5%	27
Median home sales price (state is dollars not rate)	\$205,000	NA	\$146,000	140.4%	11
Children receiving Families First grants (TANF)	182	1.5%	2.7%	55.2%	7
Children receiving SNAP	2,954	24.3%	28.2%	86.2%	13
Children under five receiving WIC	1,109	34.5%	30.6%	112.8%	32
Education 	Dickson County		Tennessee Rate	County Rate as a percentage of State Rate	County Rank
	Number	Rate			
School age special education services	1,085	13.3%	12.3%	108.0%	53
TEIS participation (per 1,000 in age group)	52	27.33	27.9	98.0%	40
Cohort high school dropouts	28	4.7%	8.3%	56.6%	51
Event high school dropouts	23	0.9%	2.2%	40.9%	46
Economically disadvantaged students	4,284	52.6%	65.1%	80.8%	9
School expulsions (per 1,000 students)	0	0.0	2.0	0.0%	1
Chronic absenteeism	1,143	14.0%	13.3%	105.3%	62
Young adult college enrollment/completion rate	NA	57.6%	62.5%	92.2%	59
Health 	Dickson County		Tennessee Rate	County Rate as a percentage of State Rate	County Rank
	Number	Rate			
Neonatal abstinence syndrome (per 1,000 live births)	*	*	11.5	*	*
Births to mothers who smoked during pregnancy	110	17.7%	12.1%	146.3%	29
Children on TennCare (Medicaid)	6,000	42.6%	44.7%	95.3%	18
Total TennCare (Medicaid) enrollees	10,281	19.2%	19.9%	96.7%	21
Births covered by TennCare (Medicaid)	445	71.5%	65.5%	109.3%	25
Children qualified for Medicaid/CHIP but uninsured	369	5.5%	6.5%	84.6%	25
Infant mortality (per 1,000 live births)	2	3.20	6.9	46.4%	24
Neonatal death (per 1,000 live births)	2	3.20	4.4	72.7%	52
Child deaths (per 100,000 children age 1 to 14)	1	10.50	20.5	51.2%	41
Teen violent deaths (per 100,000 children age 15 to 19)	0	0.00	55.7	0.0%	1
Adequate prenatal care	367	59.0%	58.8%	100.3%	61
Children under age six screened for lead poisoning	533	13.8%	17.1%	80.4%	68
Public school students measured as overweight/obese	NA	39.0%	39.3%	99.2%	23
Teens with STDs (per 1,000 children age 15 to 17)	17	8.4	19.0	44.1%	14
Medical doctors by county (per 100,000 residents)	44	82.3	229.1	35.9%	24
Dentists by county (per 100,000 residents)	21	39.3	50.1	78.5%	21
Family & Community 	Dickson County		Tennessee Rate	County Rate as a percentage of State Rate	County Rank
	Number	Rate			
Reported child abuse cases	666	5.5%	4.7%	117.3%	49
Commitment to state custody (per 1,000 children)	107	7.9	4.1	195.5%	78
Remaining in state custody (per 1,000 children)	111	8.2	5.2	158.7%	67
Juvenile court referrals	546	4.5%	3.5%	126.9%	56
Recorded marriages (per 1,000 residents)	461	8.6	8.0	107.5%	13
Recorded divorces (per 1,000 residents)	247	4.6	3.5	131.4%	82

Dickson County

At 21st, Dickson County is in the top quarter of Tennessee counties in child well-being. Some of the county's strongest rankings include a high rate of 3rd to 8th grade children rated proficient in reading and math on TNReady tests and a high household income. The county's biggest challenges are a high cost of housing and a relatively high rate of pregnancy among girls age 15-17.

Additional strengths include a relatively low rate of child poverty. Though it is still a higher number than one would hope, Dickson County's 20.2 percent child poverty rate is better than most counties in Tennessee. Dickson county also has a relatively low percentage of children without health insurance.

Additional opportunities for improvement include a high school graduation rate that does not match reading and math proficiency levels and an above-average rate of substantiated cases of abuse or neglect.

Policy/Practice/Program Options to Improve Outcomes. Many of these policies have multiple models for delivery, including public-private partnership and non-profit leadership.

- Pro-active housing policy that helps ensure affordable housing is available for people to live where they work can improve negative outcomes related to high housing costs.
- Comprehensive sex education classes that include both encouragement of abstinence and information on birth control have been shown to reduce the number of teen pregnancies.
- Making high school students aware of the community college and technical school benefits available to them through Tennessee Promise can encourage on-time high school graduation.
- Two-generation programs such as evidence-based home visiting have been shown to reduce instances of child abuse and neglect.