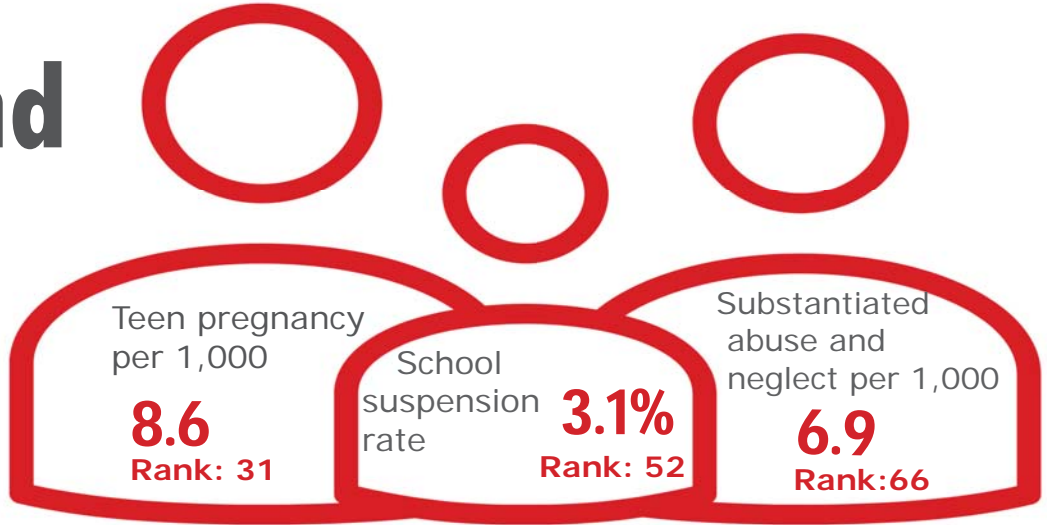


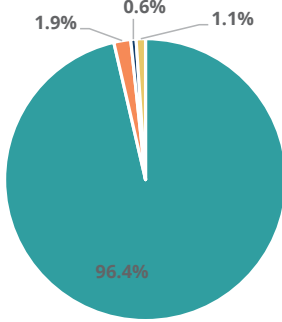
# Family & Community

Rank: 50

# Cumberland Rank: 36



Child Population by Race

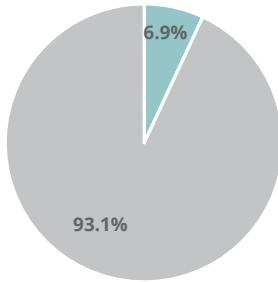


- White, Including Hispanic
- Black, Including Hispanic
- Native American/Alaskan
- Asian/Pacific Islander

# Economic Well-Being

Rank: 35

Child Population by Hispanic Ethnicity

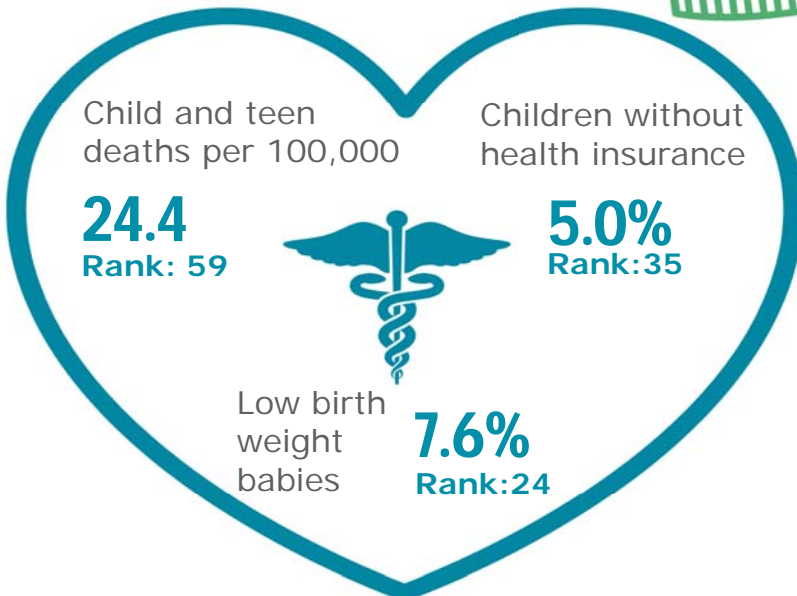


- Hispanic, All Races
- Non-Hispanic



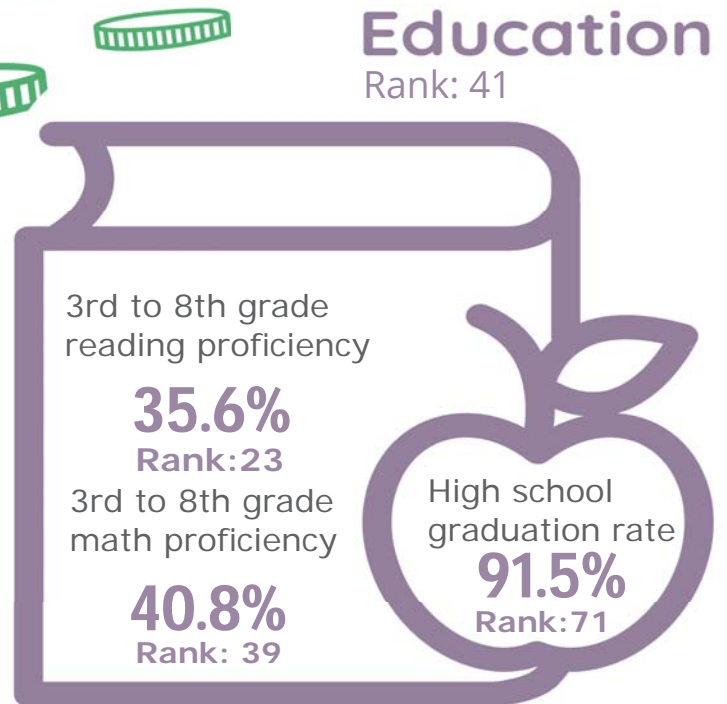
# Health

Rank: 33








# Education

Rank: 41



# Cumberland County

Published 1/2021

| Demographics          | Cumberland County |       | Tennessee Rate | County Rate as a percentage of State Rate | County Rank |
|--|-------------------|-------|----------------|---|-------------|
|  | Number            | Rate  |                |   |             |
| Total population (state comparison is number not rate)   | 59,695            | NA    | 6,769,975      | 0.9%                                      | 23          |
| Population under 18 years of age   | 10,353            | 17.3% | 22.2%          | 78.1%                                     | 91          |
| Economic Well-Being   | Cumberland County |       | Tennessee Rate | County Rate as a percentage of State Rate | County Rank |
|  | Number            | Rate  |                |   |             |
| Youth unemployment   | 136               | 19.4% | 11.2%          | 173.2%                                    | 79          |
| Per capita personal income (state is dollars not rate)   | \$36,613          | NA    | \$46,900       | 78.1%                                     | 50          |
| Median home sales price (state is dollars not rate)  | \$157,450         | NA    | \$146,000      | 107.8%                                    | 28          |
| Children receiving Families First grants (TANF)  | 338               | 3.3%  | 2.7%           | 120.4%                                    | 66          |
| Children receiving SNAP  | 3,358             | 32.4% | 28.2%          | 115.2%                                    | 59          |
| Children under five receiving WIC  | 1,444             | 53.4% | 30.6%          | 174.5%                                    | 83          |
| Education             | Cumberland County |       | Tennessee Rate | County Rate as a percentage of State Rate | County Rank |
|  | Number            | Rate  |                |   |             |
| School age special education services  | 909               | 12.8% | 12.3%          | 103.9%                                    | 43          |
| TEIS participation (per 1,000 in age group)  | 84                | 53.64 | 27.9           | 192.4%                                    | 89          |
| Cohort high school dropouts  | 35                | 6.4%  | 8.3%           | 77.1%                                     | 70          |
| Event high school dropouts   | 29                | 1.4%  | 2.2%           | 63.6%                                     | 74          |
| Economically disadvantaged students  | 5,254             | 74.5% | 65.1%          | 114.4%                                    | 59          |
| School expulsions (per 1,000 students)   | 8                 | 1.0   | 2.0            | 50.0%                                     | 67          |
| Chronic absenteeism  | 938               | 13.2% | 13.3%          | 99.2%                                     | 53          |
| Young adult college enrollment/completion rate   | NA                | 53.1% | 62.5%          | 85.0%                                     | 84          |
| Health              | Cumberland County |       | Tennessee Rate | County Rate as a percentage of State Rate | County Rank |
|  | Number            | Rate  |                |   |             |
| Neonatal abstinence syndrome (per 1,000 live births)   | 23                | 41.67 | 11.5           | 362.9%                                    | 54          |
| Births to mothers who smoked during pregnancy  | 140               | 25.4% | 12.1%          | 209.9%                                    | 79          |
| Children on TennCare (Medicaid)  | 6,725             | 56.3% | 44.7%          | 125.8%                                    | 76          |
| Total TennCare (Medicaid) enrollees  | 11,966            | 20.0% | 19.9%          | 100.7%                                    | 27          |
| Births covered by TennCare (Medicaid)  | 468               | 84.8% | 65.5%          | 129.5%                                    | 77          |
| Children qualified for Medicaid/CHIP but uninsured   | 369               | 5.4%  | 6.5%           | 83.1%                                     | 21          |
| Infant mortality (per 1,000 live births)   | 7                 | 12.70 | 6.9            | 184.1%                                    | 86          |
| Neonatal death (per 1,000 live births)   | 6                 | 10.90 | 4.4            | 247.7%                                    | 92          |
| Child deaths (per 100,000 children age 1 to 14)  | 2                 | 24.40 | 20.5           | 119.0%                                    | 59          |
| Teen violent deaths (per 100,000 children age 15 to 19)  | 0                 | 0.00  | 55.7           | 0.0%                                      | 1           |
| Adequate prenatal care   | 421               | 76.3% | 58.8%          | 129.8%                                    | 2           |
| Children under age six screened for lead poisoning   | 438               | 13.3% | 17.1%          | 77.8%                                     | 72          |
| Public school students measured as overweight/obese  | NA                | 44.6% | 39.3%          | 113.5%                                    | 67          |
| Teens with STDs (per 1,000 children age 15 to 17)  | 24                | 14.4  | 19.0           | 75.5%                                     | 49          |
| Medical doctors by county (per 100,000 residents)  | 56                | 93.8  | 229.1          | 40.9%                                     | 21          |
| Dentists by county (per 100,000 residents)   | 14                | 23.5  | 50.1           | 46.8%                                     | 52          |
| Family & Community  | Cumberland County |       | Tennessee Rate | County Rate as a percentage of State Rate | County Rank |
|  | Number            | Rate  |                |   |             |
| Reported child abuse cases   | 597               | 5.8%  | 4.7%           | 123.6%                                    | 58          |
| Commitment to state custody (per 1,000 children)   | 81                | 7.1   | 4.1            | 174.4%                                    | 71          |
| Remaining in state custody (per 1,000 children)  | 101               | 8.8   | 5.2            | 170.1%                                    | 72          |
| Juvenile court referrals   | 630               | 6.1%  | 3.5%           | 172.2%                                    | 74          |
| Recorded marriages (per 1,000 residents)   | 390               | 6.5   | 8.0            | 81.3%                                     | 40          |
| Recorded divorces (per 1,000 residents)  | 276               | 4.6   | 3.5            | 131.4%                                    | 82          |

## Cumberland County

At 36<sup>th</sup>, Cumberland County is the top half of Tennessee counties in child well-being. The county's highest ranking are based on a relatively low rate of babies born at a low birth weight and a high rate of 3<sup>rd</sup> to 8<sup>th</sup> grade children rated proficient in math on TNReady tests. The county's biggest challenges are a high rate of substantiated cases of abuse or neglect and relatively low high school graduation percentage.

Additional strengths include a relatively low rate of children without health insurance and low rates of pregnancy among girls age 15-17.

Additional opportunities for improvement include an above-average rate of child and teen deaths and high rates of children living in poverty.

*Policy/Practice/Program Options to Improve Outcomes.* Many of these policies have multiple models for delivery, including public-private partnership and non-profit leadership.

- Two-generation programs such as evidence-based home visiting have been shown to reduce instances of child abuse and neglect.
- Making high school students aware of the community college and technical school benefits available to them through Tennessee Promise can encourage on-time high school graduation.
- Child and teen deaths can be reduced with consistent enforcement of safety measures like proper car seat and seat belt use, bicycle helmet use and life preserver use around water. The fastest-growing cause of child and teen deaths in recent years has been homicide and suicide, often involving a firearm. Families who own firearms can reduce the risk to children and teens by following safe storage practices.
- With a high rate of child poverty, improving outreach to those who may qualify to receive SNAP, WIC and TennCare benefits to be sure they are aware of these services can help ensure basic needs are met. Additionally, nutrition programs that provide food for school-age children to take home can contribute to food security. Expanding services through Family Resource Centers can also help reach these vulnerable populations.