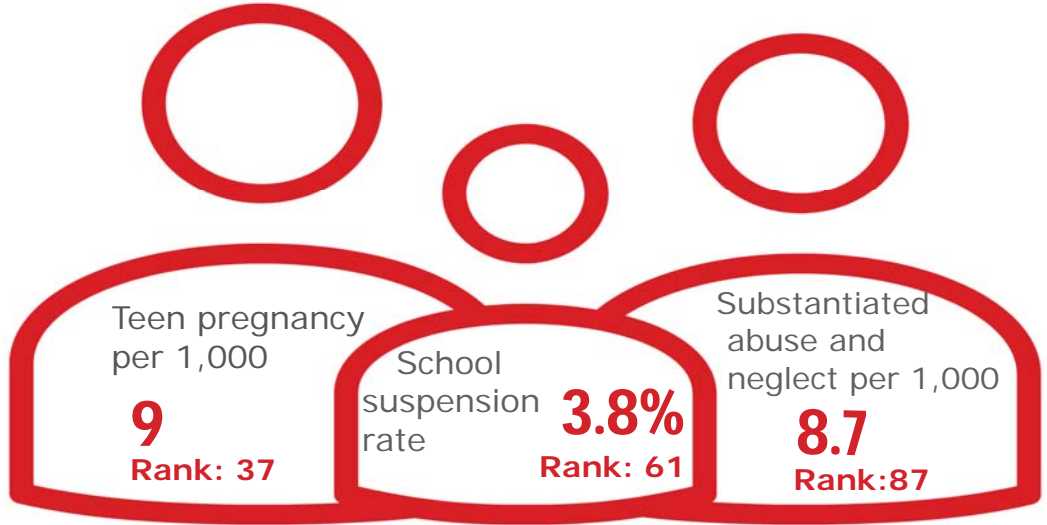


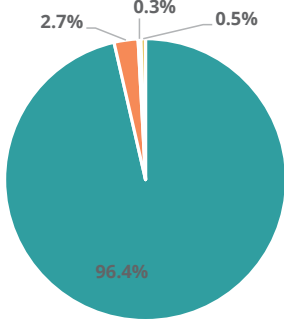
Family & Community

Rank: 79

Carter Rank: 63



Child Population by Race

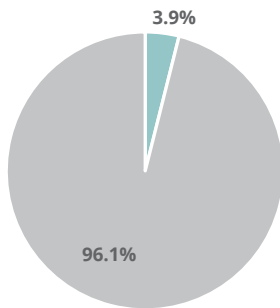


- White, Including Hispanic
- Black, Including Hispanic
- Native American/Alaskan
- Asian/Pacific Islander

Economic Well-Being

Rank: 76

Child Population by Hispanic Ethnicity

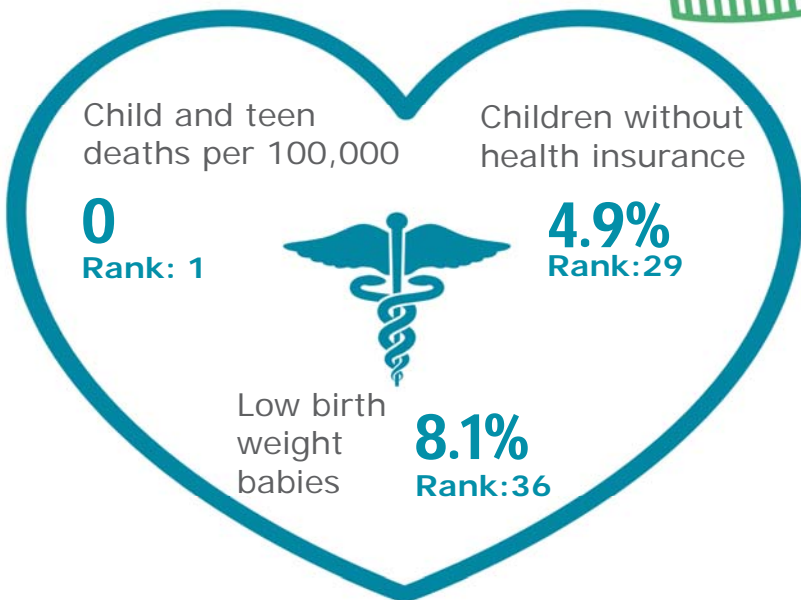


- Hispanic, All Races
- Non-Hispanic



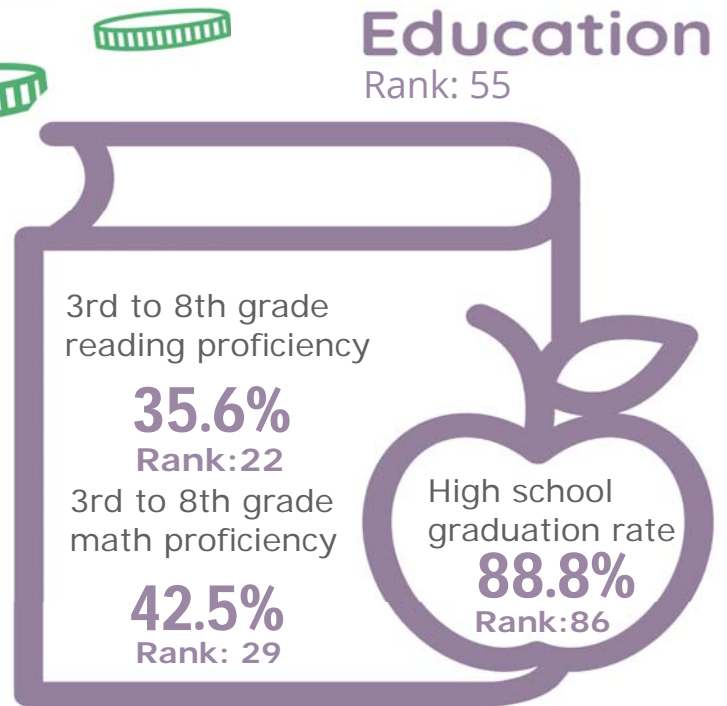
Health

Rank: 15








Education

Rank: 55



Carter County

Published 1/2021

Demographics 	Carter County		Tennessee Rate	County Rate as a percentage of State Rate	County Rank
	Number	Rate			
Total population (state comparison is number not rate)	56,345	NA	6,769,975	0.8%	25
Population under 18 years of age	10,231	18.2%	22.2%	81.8%	88
Economic Well-Being 	Carter County		Tennessee Rate	County Rate as a percentage of State Rate	County Rank
	Number	Rate			
Youth unemployment	63	7.4%	11.2%	66.1%	18
Per capita personal income (state is dollars not rate)	\$34,579	NA	\$46,900	73.7%	59
Median home sales price (state is dollars not rate)	\$127,000	NA	\$146,000	87.0%	54
Children receiving Families First grants (TANF)	228	2.2%	2.7%	82.1%	29
Children receiving SNAP	3,513	34.3%	28.2%	121.9%	69
Children under five receiving WIC	1,101	43.4%	30.6%	141.8%	62
Education 	Carter County		Tennessee Rate	County Rate as a percentage of State Rate	County Rank
	Number	Rate			
School age special education services	1,158	15.4%	12.3%	125.4%	83
TEIS participation (per 1,000 in age group)	90	59.45	27.9	213.2%	91
Cohort high school dropouts	32	5.4%	8.3%	64.9%	61
Event high school dropouts	32	1.4%	2.2%	63.5%	73
Economically disadvantaged students	5,633	75.1%	65.1%	115.3%	61
School expulsions (per 1,000 students)	0	0.0	2.0	0.0%	1
Chronic absenteeism	1,544	20.6%	13.3%	154.9%	89
Young adult college enrollment/completion rate	NA	57.6%	62.5%	92.2%	59
Health 	Carter County		Tennessee Rate	County Rate as a percentage of State Rate	County Rank
	Number	Rate			
Neonatal abstinence syndrome (per 1,000 live births)	28	58.21	11.5	507.0%	61
Births to mothers who smoked during pregnancy	121	25.2%	12.1%	208.3%	78
Children on TennCare (Medicaid)	6,501	54.3%	44.7%	121.3%	64
Total TennCare (Medicaid) enrollees	12,299	21.8%	19.9%	109.7%	43
Births covered by TennCare (Medicaid)	404	84.0%	65.5%	128.3%	73
Children qualified for Medicaid/CHIP but uninsured	381	5.2%	6.5%	80.0%	16
Infant mortality (per 1,000 live births)	3	6.20	6.9	89.9%	51
Neonatal death (per 1,000 live births)	1	2.10	4.4	47.7%	40
Child deaths (per 100,000 children age 1 to 14)	0	0.00	20.5	0.0%	1
Teen violent deaths (per 100,000 children age 15 to 19)	1	33.40	55.7	60.0%	45
Adequate prenatal care	249	51.8%	58.8%	88.1%	83
Children under age six screened for lead poisoning	606	19.8%	17.1%	115.7%	28
Public school students measured as overweight/obese	NA	42.1%	39.3%	107.1%	42
Teens with STDs (per 1,000 children age 15 to 17)	22	12.1	19.0	63.8%	40
Medical doctors by county (per 100,000 residents)	33	58.6	229.1	25.6%	38
Dentists by county (per 100,000 residents)	16	28.4	50.1	56.7%	42
Family & Community 	Carter County		Tennessee Rate	County Rate as a percentage of State Rate	County Rank
	Number	Rate			
Reported child abuse cases	725	7.1%	4.7%	151.9%	87
Commitment to state custody (per 1,000 children)	80	7.0	4.1	172.5%	70
Remaining in state custody (per 1,000 children)	103	9.0	5.2	173.8%	76
Juvenile court referrals	7	0.1%	3.5%	1.9%	6
Recorded marriages (per 1,000 residents)	305	5.4	8.0	67.5%	78
Recorded divorces (per 1,000 residents)	250	4.4	3.5	125.7%	76

Carter County

At 63rd, Carter County is in the bottom half of Tennessee counties in child well-being. The county had no child or teen deaths and ranked 1st in that indicator. Some of the county's strongest rankings include that it has a below-average rate of children lacking health insurance and a relatively high percent of 3rd to 8th grade children rated proficient in reading and math on TNReady tests. The county's biggest challenges are high rate of substantiated cases of abuse or neglect and a low high school graduation rate.

Additional strengths include low housing costs and a below-average rate of babies born at a low birth weight.

Additional opportunities for improvement include almost a third of children are living in poverty and a below-average median household income.

Policy/Practice/Program Options to Improve Outcomes. Many of these policies have multiple models for delivery, including public-private partnership and non-profit leadership.

- Two-generation programs such as evidence-based home visiting have been shown to reduce instances of child abuse and neglect.
- Making high school students aware of the community college and technical school benefits available to them through Tennessee Promise can encourage on-time high school graduation.
- With a high rate of child poverty and a relatively low median household income, improving outreach to those who may qualify to receive SNAP, WIC and TennCare benefits to be sure they are aware of these services can help ensure basic needs are met. Additionally, nutrition programs that provide food for school-age children to take home can contribute to food security. Expanding services through Family Resource Centers can also help reach these vulnerable populations.