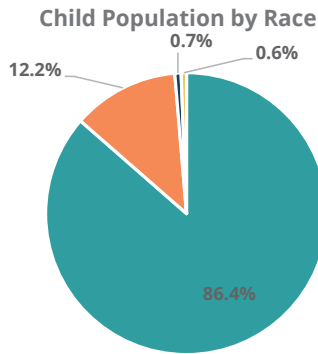
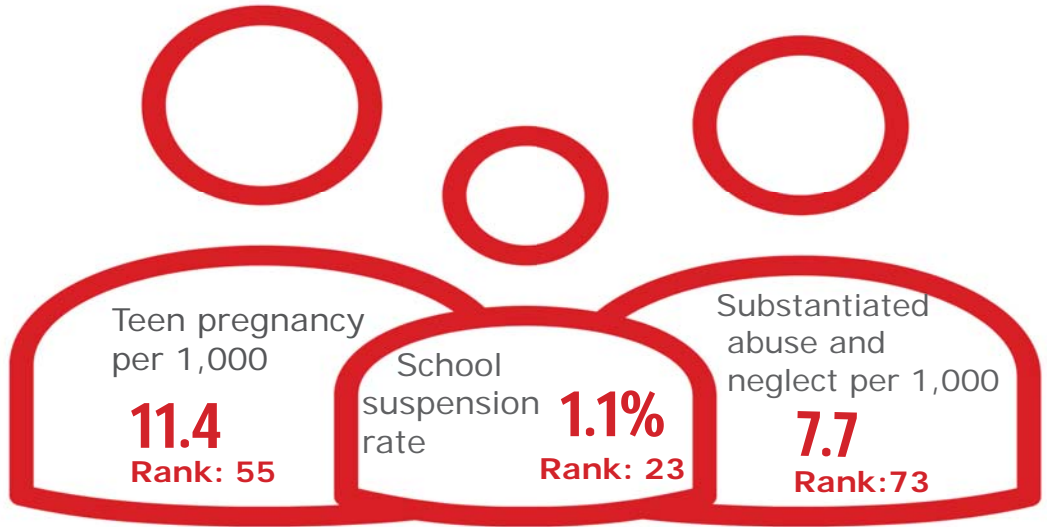


Family & Community

Rank: 47

Carroll

Rank: 20

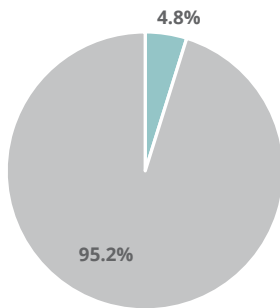


- White, Including Hispanic
- Black, Including Hispanic
- Native American/Alaskan
- Asian/Pacific Islander

Economic Well-Being

Rank: 51

Child Population by Hispanic Ethnicity

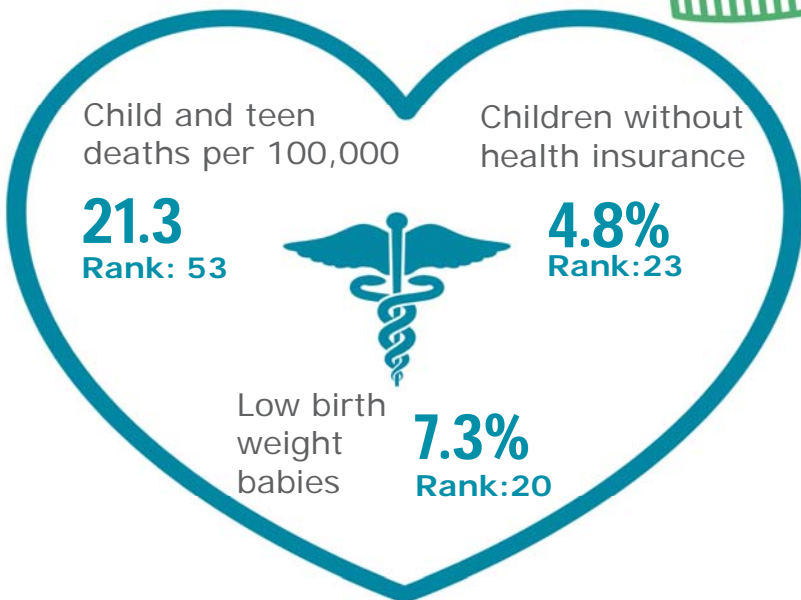


- Hispanic, All Races
- Non-Hispanic



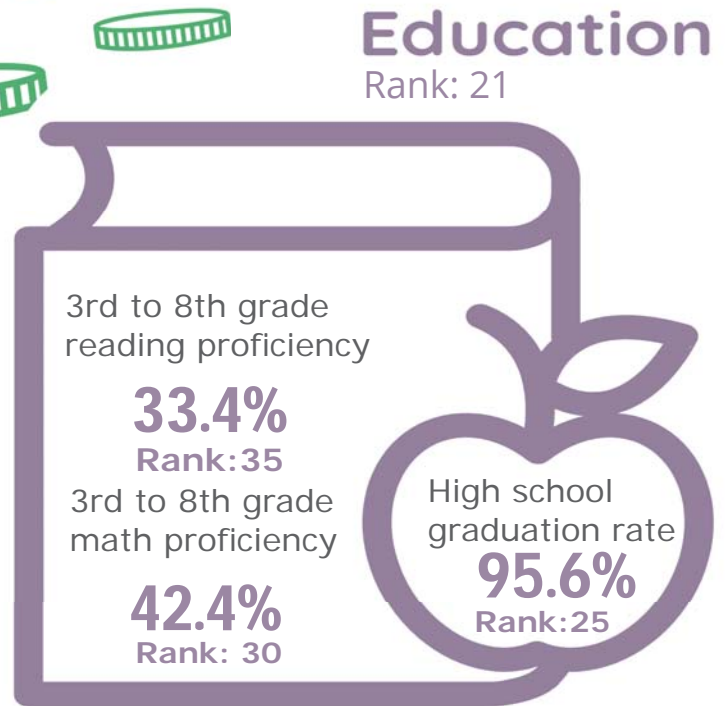
Health

Rank: 22








Education

Rank: 21



Carroll County

Published 1/2021

Demographics 	Carroll County		Tennessee Rate	County Rate as a percentage of State Rate	County Rank
	Number	Rate			
Total population (state comparison is number not rate)	28,022	NA	6,769,975	0.4%	52
Population under 18 years of age	6,141	21.9%	22.2%	98.7%	33
Economic Well-Being 	Carroll County		Tennessee Rate	County Rate as a percentage of State Rate	County Rank
	Number	Rate			
Youth unemployment	42	9.0%	11.2%	80.4%	29
Per capita personal income (state is dollars not rate)	\$35,900	NA	\$46,900	76.5%	53
Median home sales price (state is dollars not rate)	\$87,250	NA	\$146,000	59.8%	86
Children receiving Families First grants (TANF)	210	3.4%	2.7%	126.4%	68
Children receiving SNAP	1,941	31.6%	28.2%	112.2%	53
Children under five receiving WIC	547	34.8%	30.6%	113.6%	35
Education 	Carroll County		Tennessee Rate	County Rate as a percentage of State Rate	County Rank
	Number	Rate			
School age special education services	604	13.7%	12.3%	111.8%	62
TEIS participation (per 1,000 in age group)	28	30.57	27.9	109.6%	47
Cohort high school dropouts	15	4.6%	8.3%	55.8%	50
Event high school dropouts	12	0.9%	2.2%	39.9%	45
Economically disadvantaged students	2,848	65.6%	65.1%	100.8%	40
School expulsions (per 1,000 students)	2	0.4	2.0	20.0%	61
Chronic absenteeism	230	5.1%	13.3%	38.3%	2
Young adult college enrollment/completion rate	NA	66.1%	62.5%	105.8%	20
Health 	Carroll County		Tennessee Rate	County Rate as a percentage of State Rate	County Rank
	Number	Rate			
Neonatal abstinence syndrome (per 1,000 live births)	*	*	11.5	*	*
Births to mothers who smoked during pregnancy	65	23.6%	12.1%	195.0%	70
Children on TennCare (Medicaid)	3,730	51.1%	44.7%	114.2%	47
Total TennCare (Medicaid) enrollees	7,053	25.2%	19.9%	126.5%	76
Births covered by TennCare (Medicaid)	219	79.6%	65.5%	121.7%	50
Children qualified for Medicaid/CHIP but uninsured	195	5.2%	6.5%	80.0%	16
Infant mortality (per 1,000 live births)	2	7.30	6.9	105.8%	61
Neonatal death (per 1,000 live births)	1	3.60	4.4	81.8%	57
Child deaths (per 100,000 children age 1 to 14)	1	21.30	20.5	103.9%	53
Teen violent deaths (per 100,000 children age 15 to 19)	0	0.00	55.7	0.0%	1
Adequate prenatal care	165	60.0%	58.8%	102.0%	57
Children under age six screened for lead poisoning	466	24.4%	17.1%	142.6%	13
Public school students measured as overweight/obese	NA	42.9%	39.3%	109.2%	51
Teens with STDs (per 1,000 children age 15 to 17)	15	12.9	19.0	67.9%	42
Medical doctors by county (per 100,000 residents)	17	60.7	229.1	26.5%	31
Dentists by county (per 100,000 residents)	7	25.0	50.1	49.9%	49
Family & Community 	Carroll County		Tennessee Rate	County Rate as a percentage of State Rate	County Rank
	Number	Rate			
Reported child abuse cases	371	6.0%	4.7%	129.5%	68
Commitment to state custody (per 1,000 children)	23	3.3	4.1	81.7%	28
Remaining in state custody (per 1,000 children)	35	5.1	5.2	97.3%	38
Juvenile court referrals	203	3.3%	3.5%	93.6%	34
Recorded marriages (per 1,000 residents)	199	7.1	8.0	88.8%	30
Recorded divorces (per 1,000 residents)	76	2.7	3.5	77.1%	19

Carroll County

At 20th, Carroll County is among the top Tennessee counties in child well-being. The county's strongest ranking was in low housing costs where it ranked 1st. Another strength is the county's low suspension rate of 1.1 percent. The county's biggest challenges are a high rate of substantiated cases of child abuse and neglect and a high rate of child poverty.

Additional strengths include relatively low rates of babies born at a low birth weight and low rates of children lacking health insurance.

An additional challenge for Carroll County is a low median household income and an above-average rate of child and teen deaths.

Policy/Practice/Program Options to Improve Outcomes. Many of these policies have multiple models for delivery, including public-private partnership and non-profit leadership.

- Two-generation programs such as evidence-based home visiting have been shown to reduce instances of child abuse and neglect.
- With a high rate of child poverty and a relatively low median household income, improving outreach to those who may qualify to receive SNAP, WIC and TennCare benefits to be sure they are aware of these services can help ensure basic needs are met. Additionally, nutrition programs that provide food for school-age children to take home can contribute to food security. Expanding services through Family Resource Centers can also help reach these vulnerable populations.
- Child and teen deaths can be reduced with consistent enforcement of safety measures like proper car seat and seat belt use, bicycle helmet use and life preserver use around water. The fastest-growing cause of child and teen deaths in recent years has been homicide and suicide, often involving a firearm. Families who own firearms can reduce the risk to children and teens by following safe storage practices.