

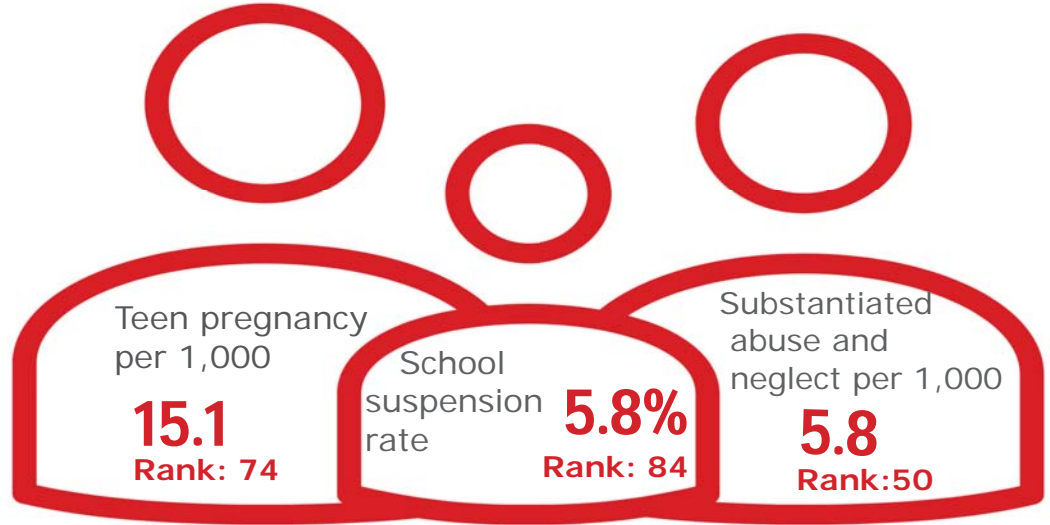


Family & Community

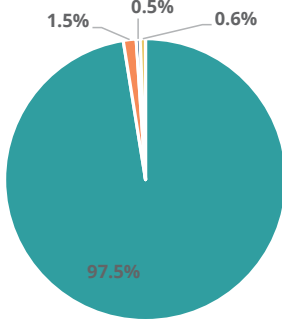
Rank: 83

Campbell

Rank: 78



Child Population by Race

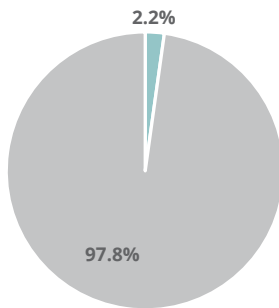


- White, Including Hispanic
- Black, Including Hispanic
- Native American/Alaskan
- Asian/Pacific Islander

Economic Well-Being

Rank: 61

Child Population by Hispanic Ethnicity

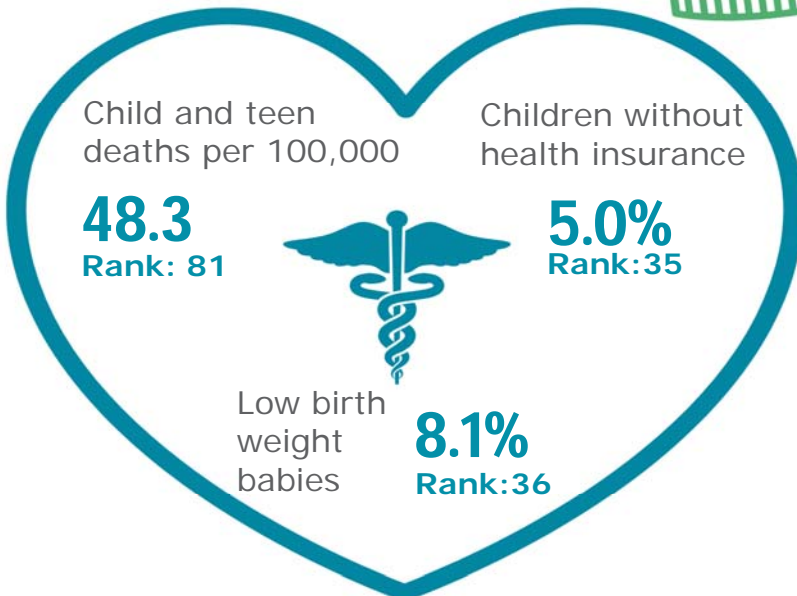


- Hispanic, All Races
- Non-Hispanic



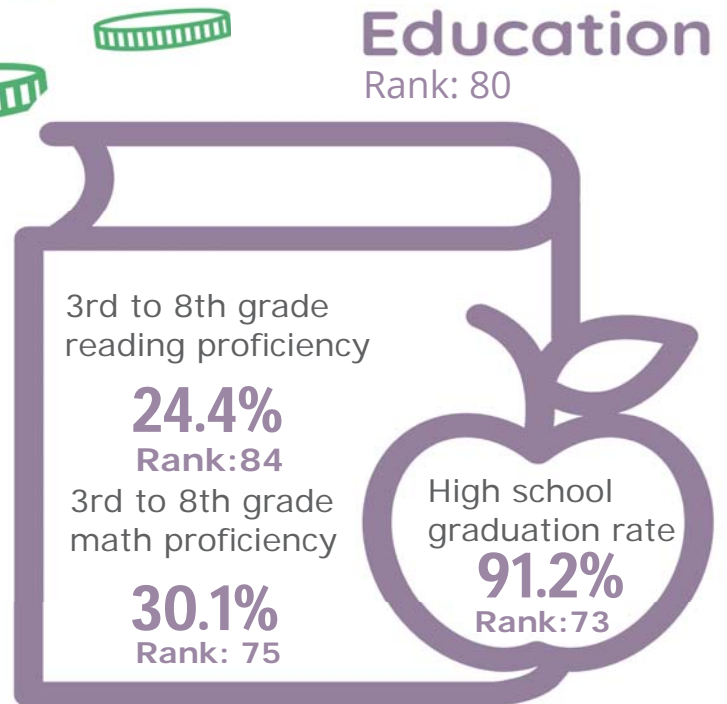
Health

Rank: 63








Education

Rank: 80



Campbell County

Published 1/2021

Demographics 	Campbell County		Tennessee Rate	County Rate as a percentage of State Rate	County Rank
	Number	Rate			
Total population (state comparison is number not rate)	39,579	NA	6,769,975	0.6%	40
Population under 18 years of age	8,037	20.3%	22.2%	91.5%	65
Economic Well-Being 	Campbell County		Tennessee Rate	County Rate as a percentage of State Rate	County Rank
	Number	Rate			
Youth unemployment	97	18.6%	11.2%	166.1%	76
Per capita personal income (state is dollars not rate)	\$33,967	NA	\$46,900	72.4%	65
Median home sales price (state is dollars not rate)	\$145,888	NA	\$146,000	99.9%	37
Children receiving Families First grants (TANF)	349	4.3%	2.7%	160.4%	86
Children receiving SNAP	3,305	41.1%	28.2%	146.0%	86
Children under five receiving WIC	1,059	48.5%	30.6%	158.3%	73
Education 	Campbell County		Tennessee Rate	County Rate as a percentage of State Rate	County Rank
	Number	Rate			
School age special education services	767	14.3%	12.3%	115.9%	68
TEIS participation (per 1,000 in age group)	26	19.35	27.9	69.4%	12
Cohort high school dropouts	4	1.0%	8.3%	12.0%	7
Event high school dropouts	11	0.7%	2.2%	31.8%	29
Economically disadvantaged students	4,898	91.8%	65.1%	141.1%	86
School expulsions (per 1,000 students)	0	0.0	2.0	0.0%	1
Chronic absenteeism	1,178	22.1%	13.3%	166.2%	92
Young adult college enrollment/completion rate	NA	57.3%	62.5%	91.7%	62
Health 	Campbell County		Tennessee Rate	County Rate as a percentage of State Rate	County Rank
	Number	Rate			
Neonatal abstinence syndrome (per 1,000 live births)	27	62.50	11.5	544.3%	63
Births to mothers who smoked during pregnancy	112	25.9%	12.1%	214.0%	82
Children on TennCare (Medicaid)	5,920	63.4%	44.7%	141.7%	89
Total TennCare (Medicaid) enrollees	11,839	29.9%	19.9%	150.3%	89
Births covered by TennCare (Medicaid)	388	89.8%	65.5%	137.2%	92
Children qualified for Medicaid/CHIP but uninsured	278	5.0%	6.5%	76.9%	10
Infant mortality (per 1,000 live births)	3	6.90	6.9	100.0%	57
Neonatal death (per 1,000 live births)	1	2.30	4.4	52.3%	44
Child deaths (per 100,000 children age 1 to 14)	3	48.30	20.5	235.6%	81
Teen violent deaths (per 100,000 children age 15 to 19)	3	134.30	55.7	241.1%	87
Adequate prenatal care	286	66.2%	58.8%	112.6%	35
Children under age six screened for lead poisoning	457	17.6%	17.1%	102.6%	47
Public school students measured as overweight/obese	NA	47.5%	39.3%	120.9%	86
Teens with STDs (per 1,000 children age 15 to 17)	13	9.6	19.0	50.4%	21
Medical doctors by county (per 100,000 residents)	24	60.6	229.1	26.5%	32
Dentists by county (per 100,000 residents)	6	15.2	50.1	30.3%	76
Family & Community 	Campbell County		Tennessee Rate	County Rate as a percentage of State Rate	County Rank
	Number	Rate			
Reported child abuse cases	496	6.2%	4.7%	132.3%	70
Commitment to state custody (per 1,000 children)	97	10.9	4.1	267.7%	90
Remaining in state custody (per 1,000 children)	110	12.3	5.2	237.6%	86
Juvenile court referrals	40	0.5%	3.5%	14.1%	7
Recorded marriages (per 1,000 residents)	305	7.7	8.0	96.3%	23
Recorded divorces (per 1,000 residents)	137	3.5	3.5	100.0%	44

Campbell County

At 78th, Campbell County ranks in the bottom fifth of Tennessee counties in child well-being. Some of the county's strongest rankings are for its low housing costs and its low rate of children without health insurance. The county's biggest challenges are a high school suspension rate and a low rate of students 3rd to 8th grade rated proficient on TNReady reading tests.

An additional strength is an above-average high school graduation rate.

Additional opportunities for improvement include an above-average rate of child and teen deaths and almost a third of Campbell county children are living in poverty. Additionally, the county has a relatively low median household income.

Policy/Practice/Program Options to Improve Outcomes. Many of these policies have multiple models for delivery, including public-private partnership and non-profit leadership.

- Suspension rates can be reduced through clear definitions of what constitutes suspendable behavior and a focus on restorative discipline practices that aim to improve behavior while keeping children in school.
- Increased access to pre-K can help reading proficiency in later grades. Early assessment of reading skills coupled with appropriate interventions where needed can improve reading proficiency in 3rd to 8th grade.
- Child and teen deaths can be reduced with consistent enforcement of safety measures like proper car seat and seat belt use, bicycle helmet use and life preserver use around water. The fastest-growing cause of child and teen deaths in recent years has been homicide and suicide, often involving a firearm. Families who own firearms can reduce the risk to children and teens by following safe storage practices.
- With a high rate of child poverty and a relatively low median household income, improving outreach to those who may qualify to receive SNAP, WIC and TennCare benefits to be sure they are aware of these services can help ensure basic needs are met. Additionally, nutrition programs that provide food for school-age children to take home can contribute to food security. Expanding services through Family Resource Centers can also help reach these vulnerable populations.