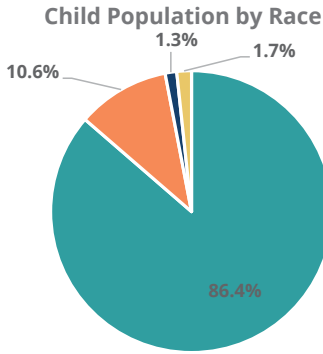
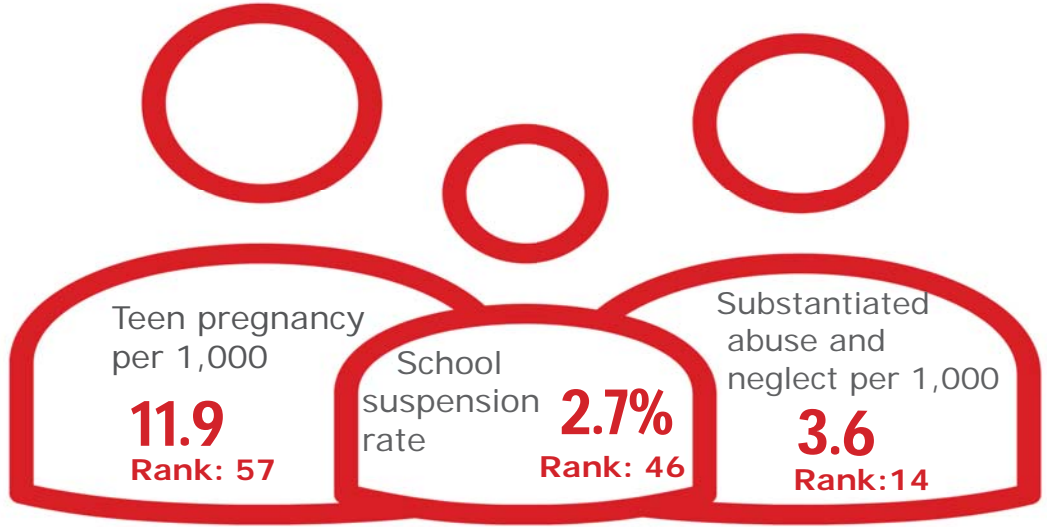


Family & Community

Rank: 20

Bedford

Rank: 67

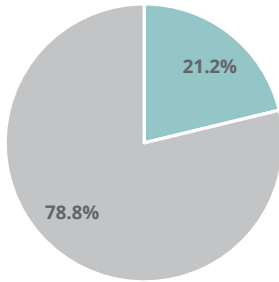


- White, Including Hispanic
- Black, Including Hispanic
- Native American/Alaskan
- Asian/Pacific Islander

Economic Well-Being

Rank: 40

Child Population by Hispanic Ethnicity

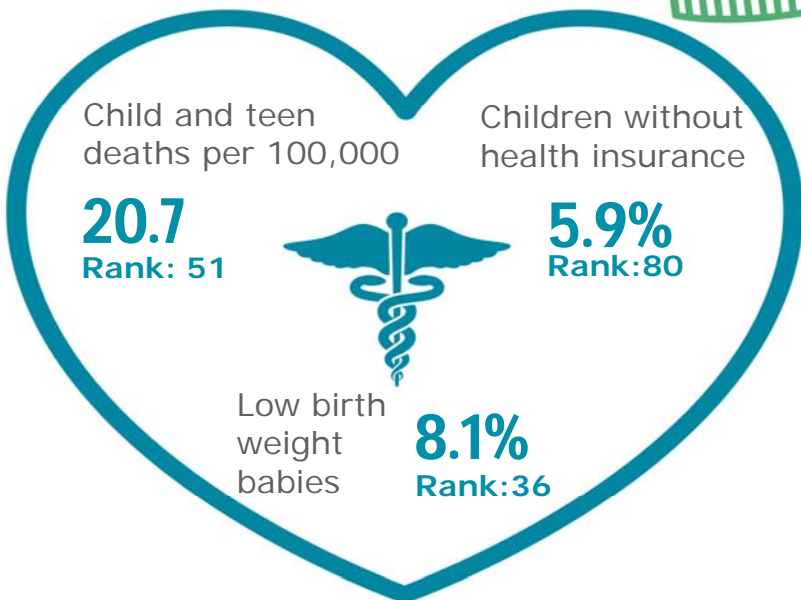


- Hispanic, All Races
- Non-Hispanic



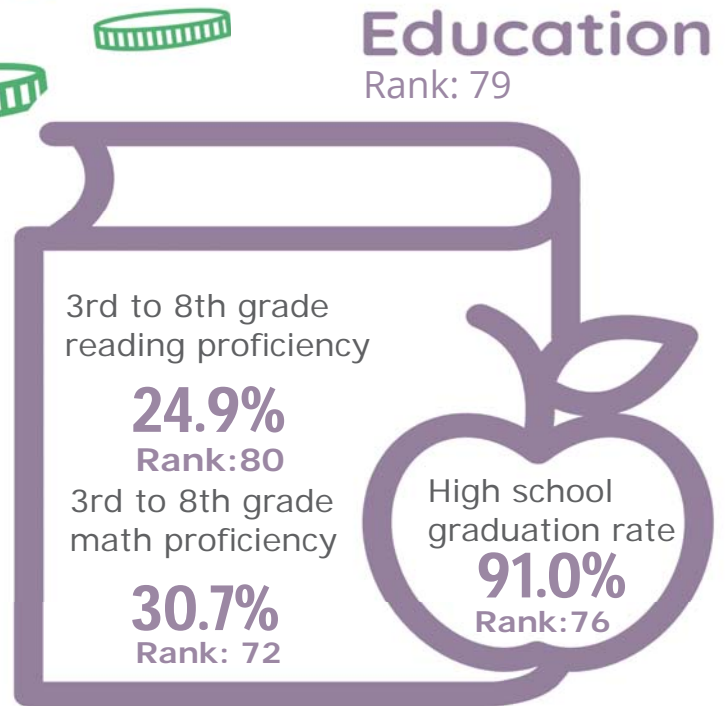
Health

Rank: 66








Education

Rank: 79



Bedford County

Published 1/2021

Demographics 	Bedford County		Tennessee Rate	County Rate as a percentage of State Rate	County Rank
	Number	Rate			
Total population (state comparison is number not rate)	49,045	NA	6,769,975	0.7%	33
Population under 18 years of age	12,313	25.1%	22.2%	113.1%	3
Economic Well-Being 	Bedford County		Tennessee Rate	County Rate as a percentage of State Rate	County Rank
	Number	Rate			
Youth unemployment	140	19.5%	11.2%	174.1%	80
Per capita personal income (state is dollars not rate)	\$37,266	NA	\$46,900	79.5%	48
Median home sales price (state is dollars not rate)	\$160,000	NA	\$146,000	109.6%	26
Children receiving Families First grants (TANF)	368	3.0%	2.7%	110.4%	58
Children receiving SNAP	4,594	37.3%	28.2%	132.5%	82
Children under five receiving WIC	1,079	32.8%	30.6%	107.3%	24
Education 	Bedford County		Tennessee Rate	County Rate as a percentage of State Rate	County Rank
	Number	Rate			
School age special education services	793	9.2%	12.3%	74.8%	2
TEIS participation (per 1,000 in age group)	53	27.04	27.9	97.0%	38
Cohort high school dropouts	30	5.3%	8.3%	63.9%	58
Event high school dropouts	37	1.5%	2.2%	68.2%	80
Economically disadvantaged students	7,073	82.6%	65.1%	127.0%	71
School expulsions (per 1,000 students)	0	0.0	2.0	0.0%	1
Chronic absenteeism	1,227	14.3%	13.3%	107.5%	63
Young adult college enrollment/completion rate	NA	56.0%	62.5%	89.6%	71
Health 	Bedford County		Tennessee Rate	County Rate as a percentage of State Rate	County Rank
	Number	Rate			
Neonatal abstinence syndrome (per 1,000 live births)	6	8.84	11.5	77.0%	27
Births to mothers who smoked during pregnancy	114	16.8%	12.1%	138.8%	25
Children on TennCare (Medicaid)	7,737	54.6%	44.7%	122.1%	67
Total TennCare (Medicaid) enrollees	11,953	24.4%	19.9%	122.5%	68
Births covered by TennCare (Medicaid)	503	74.1%	65.5%	113.2%	31
Children qualified for Medicaid/CHIP but uninsured	574	6.8%	6.5%	104.6%	71
Infant mortality (per 1,000 live births)	9	13.30	6.9	192.8%	88
Neonatal death (per 1,000 live births)	6	8.80	4.4	200.0%	87
Child deaths (per 100,000 children age 1 to 14)	2	20.70	20.5	101.0%	51
Teen violent deaths (per 100,000 children age 15 to 19)	1	30.90	55.7	55.5%	43
Adequate prenatal care	333	49.0%	58.8%	83.3%	87
Children under age six screened for lead poisoning	775	19.6%	17.1%	114.4%	34
Public school students measured as overweight/obese	NA	46.6%	39.3%	118.6%	79
Teens with STDs (per 1,000 children age 15 to 17)	21	10.6	19.0	55.7%	33
Medical doctors by county (per 100,000 residents)	24	48.9	229.1	21.4%	48
Dentists by county (per 100,000 residents)	9	18.4	50.1	36.6%	64
Family & Community 	Bedford County		Tennessee Rate	County Rate as a percentage of State Rate	County Rank
	Number	Rate			
Reported child abuse cases	595	4.8%	4.7%	103.6%	34
Commitment to state custody (per 1,000 children)	48	3.5	4.1	87.0%	30
Remaining in state custody (per 1,000 children)	51	3.8	5.2	72.4%	22
Juvenile court referrals	452	3.7%	3.5%	103.9%	43
Recorded marriages (per 1,000 residents)	377	7.7	8.0	96.3%	23
Recorded divorces (per 1,000 residents)	194	4.0	3.5	114.3%	62

Bedford County

At 67th, Bedford County in the bottom half of Tennessee counties in child well-being. Some of the county's strongest rankings include a relatively low rate of substantiated cases of child abuse and neglect and a relatively high median household income. The county's biggest challenges are its above-average percentage of children who lack health insurance and a low percentage of 3rd to 8th grade students who demonstrated proficiency on TNReady reading and math tests.

Additional strengths include relatively low rates of child poverty (22.8 percent is still too high, but better than most Tennessee counties) and low percentages of babies born at a low birth weight.

Additional opportunities for improvement include a relatively low-ranking high school graduation rate.

Policy/Practice/Program Options to Improve Outcomes. Many of these policies have multiple models for delivery, including public-private partnership and non-profit leadership.

- Most uninsured children in Tennessee qualify for either TennCare or CoverKids, so high rates of uninsured children can be improved with outreach to make sure that families are aware of these insurance opportunities. According to Census Bureau estimates, Bedford County has over 500 children who qualify for these health insurance programs but who nonetheless lack insurance.
- Increased access to pre-K can help both math and reading proficiency in later grades. Early assessment of reading skills coupled with appropriate interventions where needed can improve reading proficiency, while increasing STEM opportunities in elementary and middle schools can help improve 3rd to 8th grade math proficiency.
- Making high school students aware of the community college and technical school benefits available to them through Tennessee Promise can encourage on-time high school graduation.