

TENNESSEE HATE CRIME

2009



PREPARED BY
TENNESSEE BUREAU OF INVESTIGATION
CRIME STATISTICS UNIT





PHIL BREDESEN
Governor

TENNESSEE BUREAU OF INVESTIGATION

901 R.S. Gass Boulevard
Nashville, Tennessee 37216-2639
(615) 744-4000
TDD (615) 744-4001



MARK GWYN
Director

May 14, 2010

Ladies and Gentlemen:

I would like to present the 2009 Hate Crime report. This is the annual report published by the TBI presenting information on reported crimes motivated by bias that occurred in Tennessee. The information contained in the report is based on crime statistics information submitted by law enforcement agencies in Tennessee to TBI's Tennessee Incident Based Reporting System (TIBRS) program. TIBRS is the state version of the FBI's National Incident Based Reporting System (NIBRS) program. Please see www.tncrimeonline.com for additional information.

The groups toward which bias motivated crimes may be directed are based on the national definitions and conform to the same standards used in the annual Hate Crime Report published by the FBI for the United States. Any offense may be motivated by bias. The bias motivation is an element of the offense and is not reported as a separate crime occurrence.

I am very proud of the efforts of all participating law enforcement agencies in the state to provide the data necessary to produce this report. Our combined efforts have resulted in this annual report detailing the nature of bias motivated crime occurrences in our state.

Sincerely,

Mark Gwyn
Director



Introduction

All agencies reporting a hate crime incident for 2009 were contacted and asked to verify that the agency did have a hate crime.

An “Unknown Bias” Hate Crime is a crime that demonstrates the traits of a hate crime but the investigation of the incident has not determined a specific bias motivation code/category. All agencies are urged to properly categorize these Unknown Bias incidents once the investigation is completed and a full determination has been made regarding the bias motivated category assignment of the crime incident. Incidents submitted with a bias code of “Unknown” will be counted as a hate crime in the agency’s statistics.

Bias Motivation

Because of the difficulty in ascertaining the offender’s subjective motivation, bias is to be reported only if the investigation reveals sufficient objective facts to cause a reasonable and prudent person to conclude that the offender’s actions were motivated in whole or in part, by bias against a racial, religious, ethnic/national origin, physical or mental disability, or sexual orientation group. Incidents which do not involve any facts and / or evidence indicating biased motivation on the part of the offender are to be reported as “None”.

Categories of Bias Codes

Anti-Racial

- White
- African American
- American Indian/ Alaskan Native
- Asian/Pacific Islander
- Multi-Racial Group

Anti-Religious

- Jewish
- Catholic
- Protestant
- Islamic
- Other Religion
- Multi-Religious Group
- Atheism/Agnosticism

Anti-Ethnicity/National Origin

- Hispanic
- Other Ethnicity/National Origin

Anti-Sexual

- Male Homosexual
- Female Homosexual
- Homosexual (Gay and Lesbian)
- Heterosexual
- Bisexual

Anti-Disability

- Physical Disability
- Mental Disability

Non-Specific

- Unknown
- None



Methodology

The TBI collects hate crime data regarding criminal offenses that are motivated, in whole or in part, by the offender's bias against a race, religion, sexual orientation, ethnicity or national origin, or disability and are committed against persons, property or society. Because motivation is subjective, it is difficult to know with certainty whether a crime was the result of the offender's bias. Moreover, the presence of bias alone does not necessarily mean that a crime can be considered a hate crime. Law enforcement investigation is crucial for accurate hate crime reporting because it must reveal sufficient evidence to lead a responsible and prudent person to conclude that the offender's actions were motivated, in whole or in part, by his or her bias. Only then can law enforcement report an incident as a hate crime.

Data Collection

According to the national data collection guidelines, a hate crime may involve multiple offenses, victims, and offenders within one incident. Counting of crimes follows the same standards used in Crime in Tennessee. Crimes against persons are a count of the individual victims. When submitting crimes against property, or society, however, agencies count one offense for each distinct incident, regardless of the number of victims.

This report uses the minimally accepted designations for race and ethnicity as established by the Office of Management and Budget (OMB) and published in the Federal Register. The revised standards have five minimum categories for data on race and two categories for data on ethnicity. In complying with the published standards, the following racial designations are used in the hate crime data collection program: White, African American, American Indian/Alaskan Native; Asian/Pacific Islander; and Multiple Races. The ethnic designations are Hispanic and Other Ethnicity/National Origin.

Evidence a Crime was Motivated by Bias

An important distinction must be made when reporting a hate crime. The mere fact that the offender is biased against the victim's race, religion, disability, sexual orientation, and/or ethnicity/national origin does not mean that a hate crime was involved. Rather, the offender's criminal act must have been motivated, in whole or in part by his/her bias.

Because motivation is subjective, it is difficult to know with certainty whether a crime was the result of the offenders bias. Therefore, before an incident can be reported as a hate crime, sufficient objective facts must be present to lead a reasonable and prudent person to conclude that the offender's actions were motivated, in whole or in part, by bias. While no single fact may be conclusive, facts such as the following, particularly when combined, are supportive of a finding of bias:

1. The offender and the victim were of different race, religion, disability, sexual



orientation, and/or ethnicity/national origin. For example, the victim was black and the offender was white.

2. Bias-related oral comments, written statements, or gestures were made by the offender, which indicated his/her bias. For example, the offender shouted out a racial epithet at the victim.
3. Bias-related drawings, markings, symbols, or graffiti were left at the crime scene. For example, a swastika was painted on the floor of a synagogue.
4. Certain objects, items, or things which indicate bias were used. For example, the offenders wore white sheets with hoods covering their faces or a burning cross was left in front of the victim's house.
5. The victim is a member of a racial, religious, disability, sexual-orientation, or ethnic/national origin group which is overwhelmingly outnumbered by other residents in the neighborhood where the victim lives and the incident took place. This factor loses significance with the passage of time; i.e. it is most significant when the victim first moved into the neighborhood and becomes less and less significant as time passed without incident.
6. The victim was visiting a neighborhood where previous hate crimes were committed against other members of his/her racial, religious, disability, sexual-orientation, or ethnic/national origin group and where tensions remained high against his/her group.
7. Several incidents occurred in the same locality, at or about the same time, and the victims were all of the same race, religion, disability, sexual orientation, or ethnicity/national origin.
8. A substantial portion of the community where the crime occurred perceived that the incident was motivated by bias.
9. The victim was engaged in activities promoting his/her race, religion, disability, sexual orientation, or ethnicity/national origin. For example, the victim was a member of the NAACP or participated in gay rights demonstrations.
10. The incident coincided with a holiday or a date of particular significance relating to race, religion, disability, sexual orientation, or ethnicity/national origin, e.g., Martin Luther King Day, Rosh Hashanah.
11. The offender was previously involved in a similar hate crime or is a hate-group member.



12. There were indications that a hate group was involved. For example, a hate group claimed responsibility for the crime or was active in the neighborhood.
13. A historically established animosity existed between the victim's and the offender's groups.
14. The victim, although not a member of the targeted racial, religious, disability, sexual-orientation, or ethnic/national origin group, was a member of an advocacy group supporting the precepts of the victims group.
(U.S Department of Justice, 1999)

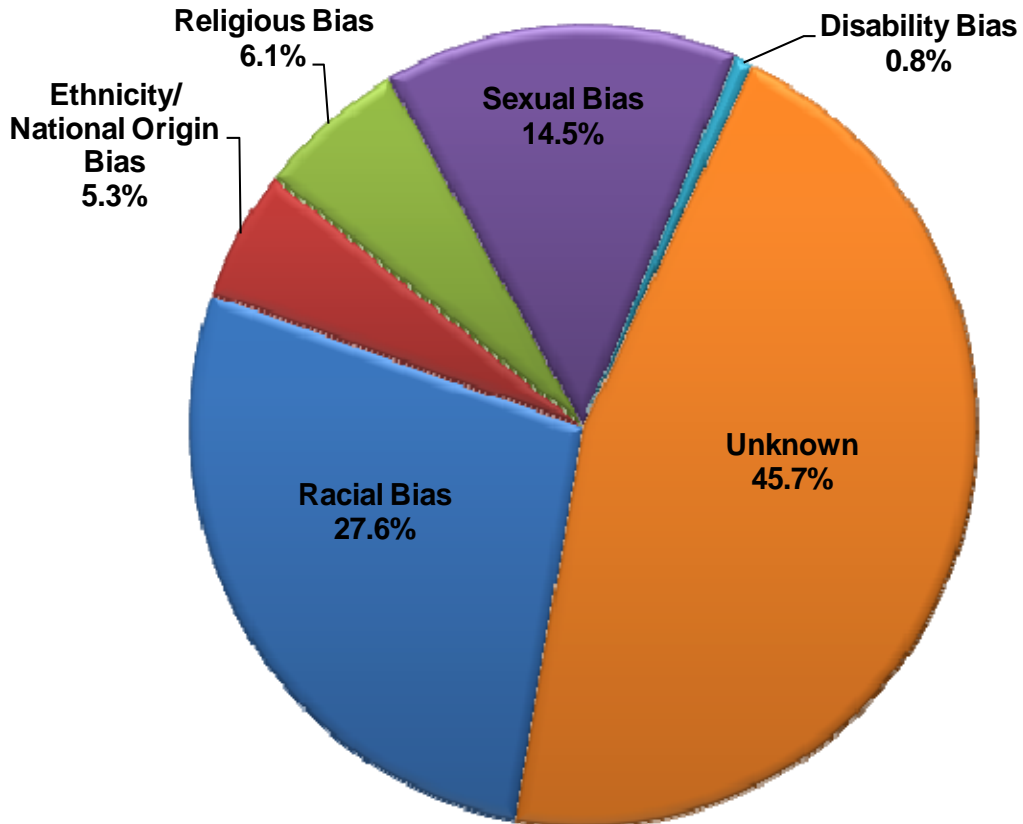


Quick Facts

- Total reported Hate Bias Offenses decreased 14.1% from 2008 – 2009. However, the category of Unknown Bias has shown an increase of 32.3% during the same period.
- The 359 Hate Bias Offenses reported in 2009 represent 0.06% of total offenses reported in the Crime in Tennessee Report 2009.
- Racial Bias Offenses represent 27.6% of all reported Hate Bias Offenses in 2009.
- Anti-African American Bias Offenses represents 68.7% of the Racial Bias total.
- 19.8% of all Hate Bias Offenses occurred between the hours of 6:00pm–8:59pm.
- 45.7% of all Hate Bias Offenses occurred at a Residence/Home.
- Males were the victim in 51.0% of Hate Bias Offenses.
- The most frequent victim age range was 25-34 at 20.9% of all age range groups.
- The Hate Crime 2009 Report contains two new reports providing offender information on demographics and the location of Hate Bias Offenses.



2009 Bias Motivated Offenses



In 2009, 359 Bias Motivated Offenses were reported by law enforcement agencies in Tennessee. Of the 359 offenses, 164 were classified as having an Unknown Bias, 99 Racial Bias, 19 Ethnicity/National Origin Bias, 22 Religious Bias, 52 Sexual Bias and 3 Disability Bias.

All crime related offenses reported to the Tennessee Bureau of Investigation Crime Statistics Unit are subject to updates and can change when criminal investigations provide more detailed information in relationship to the offenses under investigation. The TBI recommends visiting www.tncrimeonline.com for updated criminal offense statistics.

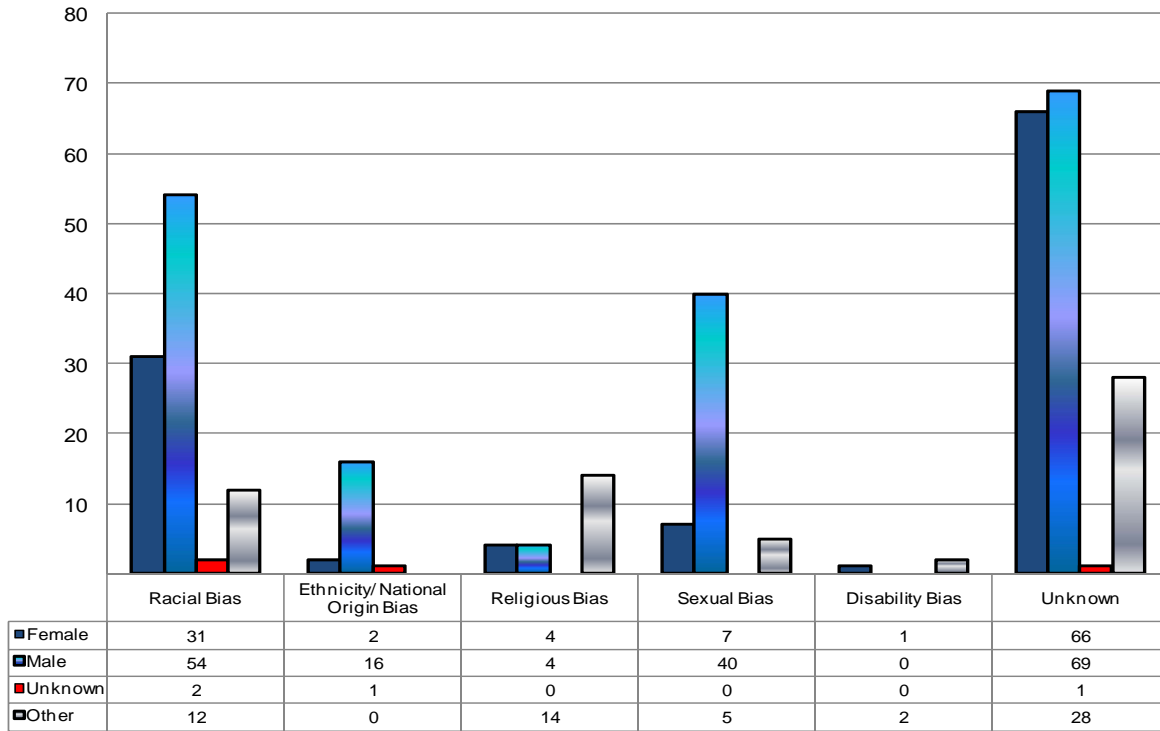


2007 - 2009 Bias Motivated Offense Analysis

Bias Motivation	2009		2008		2007	
	Total Offenses	Percentage of Total Offenses	Total Offenses	Percentage of Total Offenses	Total Offenses	Percentage of Total Offenses
Racial Bias	99	27.6%	163	39.0%	151	40.6%
Anti-White	25	25.3%	36	22.1%	36	23.8%
Anti-African American	68	68.7%	114	69.9%	106	70.2%
Anti-American Indian/Alaskan Native	1	1.0%	0	0.0%	1	0.7%
Anti-Asian/Pacific Islander	1	1.0%	6	3.7%	6	4.0%
Anti-Multi-Racial Group	4	4.0%	7	4.3%	2	1.3%
Ethnicity/National Origin Bias	19	5.3%	35	8.4%	52	14.0%
Anti-Arab	0	0.0%	0	0.0%	0	0.0%
Anti-Hispanic	16	84.2%	22	62.9%	42	80.8%
Anti-Other Ethnicity/National Origin	3	15.8%	13	37.1%	10	19.2%
Religious Bias	22	6.1%	43	10.3%	34	9.1%
Anti-Jewish	8	36.4%	8	18.6%	11	32.4%
Anti-Catholic	1	4.5%	5	11.6%	2	5.9%
Anti-Protestant	6	27.3%	6	14.0%	6	17.6%
Anti-Islamic (Moslem)	0	0.0%	8	18.6%	2	5.9%
Anti-Multi-Religious Group	2	9.1%	3	7.0%	1	2.9%
Anti-Atheist/Agnostic/Etc.	0	0.0%	0	0.0%	0	0.0%
Anti-Other Religion	5	22.7%	13	30.2%	12	35.3%
Sexual Bias	52	14.5%	60	14.4%	54	14.5%
Anti-Male Homosexual (Gay)	28	53.8%	25	41.7%	30	55.6%
Anti-Female Homosexual (Lesbian)	9	17.3%	15	25.0%	13	24.1%
Anti-Homosexual (Gays and Lesbians)	14	26.9%	18	30.0%	7	13.0%
Anti-Heterosexual	1	1.9%	0	0.0%	2	3.7%
Anti-Bisexual	0	0.0%	2	3.3%	2	3.7%
Disability Bias	3	0.8%	6	1.4%	5	1.3%
Anti-Physical Disability	1	33.3%	4	66.7%	3	60.0%
Anti-Mental Disability	2	66.7%	2	33.3%	2	40.0%
Unknown	164	45.7%	111	26.6%	76	20.4%

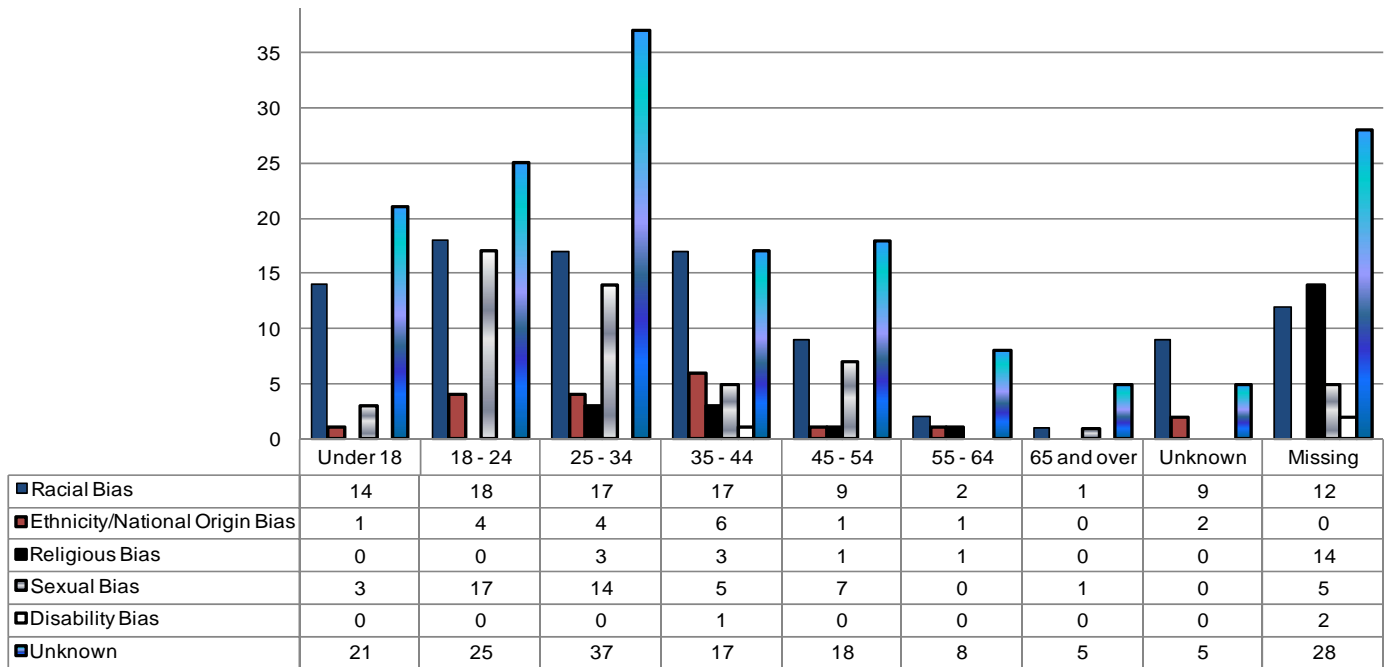


Victim Gender by Bias Type



The category of Other includes but is not limited to victims who do not have a gender which are classified as: Business, Government Building, Religious, Society/Public, etc.

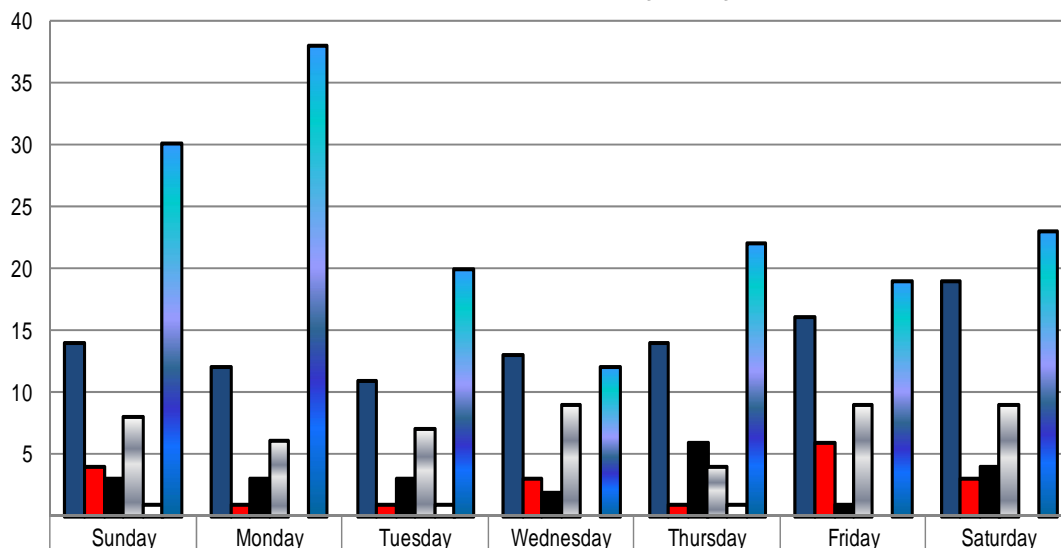
Victim Age by Bias Type



The category of Missing includes victim types of Business, Government Building, Religious, Society/Public, etc.

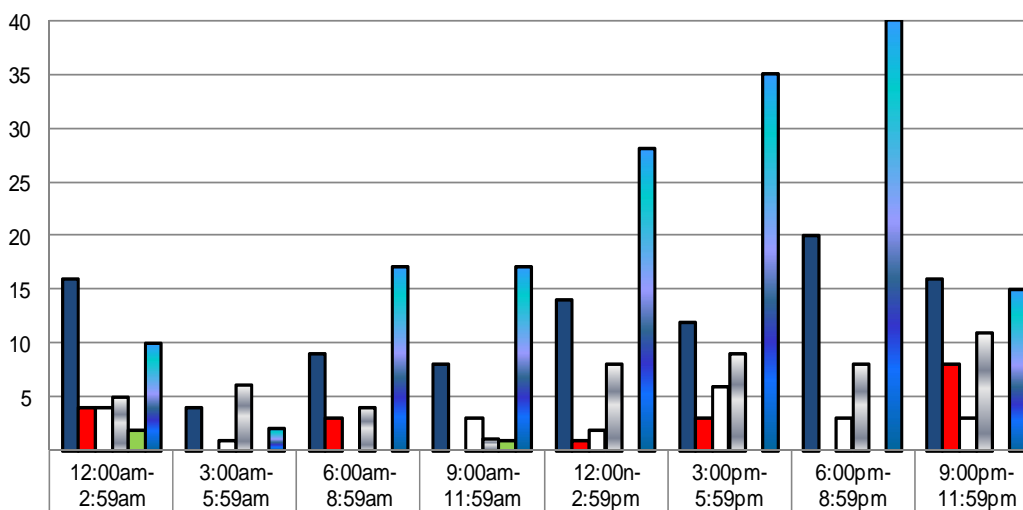


2009 Bias Motivated Offenses by Day of the Week



■ Racial Bias	14	12	11	13	14	16	19
■ Ethnicity/National Origin Bias	4	1	1	3	1	6	3
■ Religious Bias	3	3	3	2	6	1	4
■ Sexual Bias	8	6	7	9	4	9	9
■ Disability Bias	1	0	1	0	1	0	0
■ Unknown	30	38	20	12	22	19	23

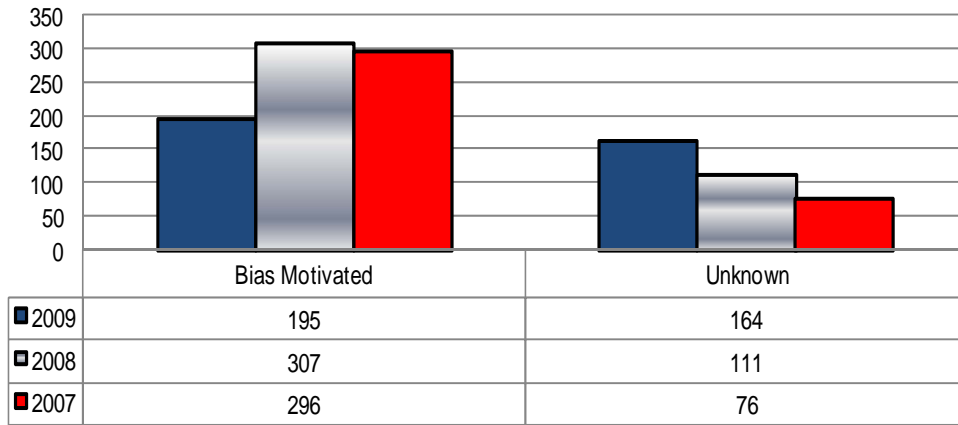
2009 Bias Motivated Offenses by Time of Day



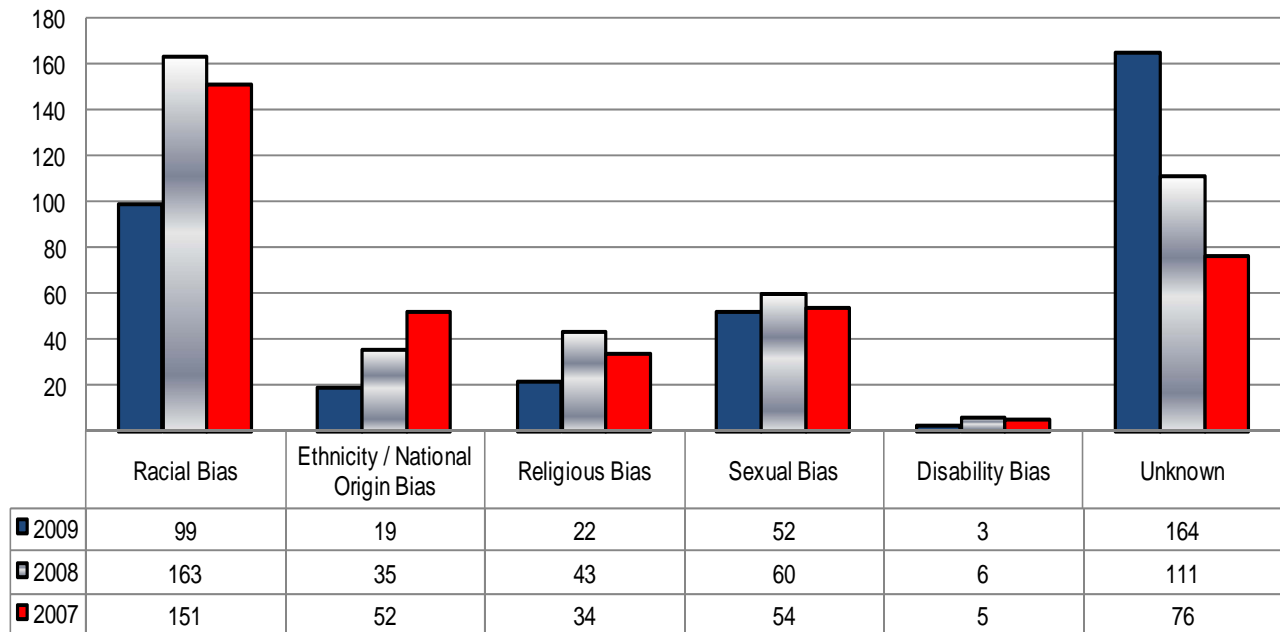
■ Racial Bias	16	4	9	8	14	12	20	16
■ Ethnicity/National Origin Bias	4	0	3	0	1	3	0	8
■ Religious Bias	4	1	0	3	2	6	3	3
■ Sexual Bias	5	6	4	1	8	9	8	11
■ Disability Bias	2	0	0	1	0	0	0	0
■ Unknown	10	2	17	17	28	35	40	15



Three Year Trend on Known and Unknown Bias Motivated Offenses



Three Year Trend of Bias Motivated Offenses



2009 Anti-White Bias With Offense Type

Offense Type	Murder	Aggravated Assault	Simple Assault	Intimidation	Destruction/Damage/Vandalism	Theft From Building	Theft of Motor Vehicle Parts	Theft - All Other Larceny	Motor Vehicle Theft	Total
Jurisdiction										
Tennessee	1	5	5	3	3	3	1	3	1	25
Clarksville Police Department	0	0	1	0	0	0	0	0	0	1
Hamilton County Sheriff's Department	0	0	1	0	0	0	0	0	0	1
Humboldt Police Department	0	1	0	0	0	0	0	0	0	1
Kingsport Police Department	0	0	0	1	0	0	0	0	0	1
Knoxville Police Department	0	1	0	0	0	0	0	0	0	1
Lebanon Police Department	0	0	0	0	1	0	0	1	0	2
Memphis Police Department	0	1	0	1	1	0	0	0	0	3
Nashville Metro Police Department	0	1	0	0	0	0	0	0	0	1
Newport Police Department	0	0	0	1	0	0	0	0	0	1
Shelby County Sheriff's Department	0	0	3	0	0	0	0	0	0	3
Van Buren County Sheriff's Department	1	0	0	0	1	3	1	2	1	9
Wartrace Police Department	0	1	0	0	0	0	0	0	0	1

2009 Anti-American Indian Bias With Offense Type

Offense Type	Fraud - Credit Card/ATM	Total
Jurisdiction		
Tennessee	1	1
Bradford Police Department	1	1

2009 Anti-Asian Bias With Offense Type

Offense Type	Destruction/ Damage/Vandalism	Total
Jurisdiction		
Tennessee	1	1
Memphis Police Department	1	1

2009 Anti-Multi Racial Bias With Offense Type

Offense Type	Burglary	Destruction/ Damage/Vandalism	Total
Jurisdiction			
Tennessee	1	3	4
Grundy County Sheriff's Department	1	0	1
Livingston Police Department	0	2	2
Spring Hill Police Department	0	1	1



2009 Anti-African American Bias With Offense Type

Offense Type	Aggravated Assault	Simple Assault	Intimidation	Stalking	Burglary	Destruction/ Damage/ Vandalism	Theft - All Other Larceny	Total
Jurisdiction								
Tennessee	8	12	23	1	1	22	1	68
Anderson County Sheriff's Department	0	0	1	0	0	1	0	2
Chattanooga Police Department	0	1	0	0	0	0	0	1
Cleveland Police Department	0	4	3	0	0	0	0	7
Dickson Police Department	0	0	0	0	0	2	0	2
Elizabethton Police Department	1	1	0	0	0	0	0	2
Greenbrier Police Department	0	0	1	0	0	0	0	1
Hamilton County Sheriff's Department	2	0	0	0	0	0	0	2
Hendersonville Police Department	0	0	1	0	0	0	0	1
Knox County Sheriff's Department	0	0	0	0	0	1	0	1
Knoxville Police Department	0	0	1	0	0	1	0	2
Lawrence County Sheriff's Department	1	0	0	0	0	1	0	2
Lexington Police Department	0	2	2	0	0	1	0	5
Loudon County Sheriff's Department	0	0	2	0	0	0	0	2
Memphis Police Department	0	3	1	0	0	4	0	8
Monroe County Sheriff's Department	0	0	0	0	0	1	0	1
Montgomery County Sheriff's Department	0	0	1	0	0	0	0	1
Murfreesboro Police Department	1	0	0	0	0	0	0	1
Rutherford County Sheriff's Department	0	0	0	0	0	1	0	1
Savannah Police Department	0	0	0	0	0	1	0	1
Sevierville Police Department	0	0	1	0	0	0	0	1
Shelby County Sheriff's Department	2	1	4	0	0	2	1	10
Smyrna Police Department	0	0	0	0	1	0	0	1
Spring Hill Police Department	0	0	0	0	0	1	0	1
Tennessee Bureau of Investigation	0	0	1	0	0	0	0	1
Tennessee Technological University	0	0	0	0	0	1	0	1
Tipton County Sheriff's Department	0	0	1	0	0	0	0	1
Union City Police Department	0	0	0	1	0	0	0	1
University of Tennessee at Chattanooga	1	0	0	0	0	0	0	1
University of Tennessee at Knoxville	0	0	1	0	0	3	0	4
Walters State Community College	0	0	0	0	0	1	0	1
Washington County Sheriff's Department	0	0	2	0	0	0	0	2



2009 Anti-Hispanic Bias With Offense Type

Offense Type	Aggravated Assault	Simple Assault	Intimidation	Burglary	Destruction/ Damage/ Vandalism	Fraud - Impersonation	Robbery	Theft - All Other Larceny	Total
Jurisdiction									
Tennessee	3	1	2	1	2	2	4	1	16
Dickson County Sheriff's Department	0	0	1	0	0	0	0	0	1
Dunlap Police Department	0	0	0	0	0	0	3	0	3
Knox County Sheriff's Department	1	0	0	0	0	0	0	0	1
Marshall County Sheriff's Department	0	0	1	0	0	0	0	0	1
Memphis Police Department	2	1	0	0	1	0	0	0	4
Nashville Metro Police Department	0	0	0	0	1	0	0	0	1
Scott County Sheriff's Department	0	0	0	0	0	0	0	1	1
Shelby County Sheriff's Department	0	0	0	0	0	0	1	0	1
Tennessee Department of Safety	0	0	0	0	0	2	0	0	2
University of the South	0	0	0	1	0	0	0	0	1

2009 Anti-Other Ethnicity Bias With Offense Type

Offense Type	Simple Assault	Intimidation	Total
Jurisdiction			
Tennessee	2	1	3
Bartlett Police Department	0	1	1
Johnson City Police Department	1	0	1
Memphis Police Department	1	0	1

2009 Anti-Physical Disability Bias With Offense Type

Offense Type	Stalking	Total
Jurisdiction		
Tennessee	1	1
Shelby County Sheriff's Department	1	1

2009 Anti-Mental Disability Bias With Offense Type

Offense Type	Stalking	Fraud - False Pretenses	Theft of Motor Vehicle Parts	Total
Jurisdiction				
Tennessee	1	1	1	3
Chattanooga Police Department	0	1	0	1
Knox County Sheriff's Department	0	0	1	1
Shelby County Sheriff's Department	1	0	0	1



2009 Anti-Jewish Bias With Offense Type

Offense Type	Intimidation	Destruction/ Damage/ Vandalism	Total
Jurisdiction			
Tennessee	2	6	8
Anderson County Sheriff's Department	0	4	4
Knoxville Police Department	0	1	1
Memphis Police Department	2	0	2
University of Memphis	0	1	1

2009 Anti-Catholic Bias With Offense Type

Offense Type	Theft - All Other Larceny	Total
Jurisdiction		
Tennessee	1	1
Weakley County Sheriff's Department	1	1

2009 Anti-Protestant Bias With Offense Type

Offense Type	Intimidation	Destruction/ Damage/ Vandalism	Total
Jurisdiction			
Tennessee	1	5	6
Bradley County Sheriff's Department	0	4	4
Cheatham County Sheriff's Department	1	0	1
University of the South	0	1	1

2009 Anti-Other Religion Bias With Offense Type

Offense Type	Intimidation	Destruction/ Damage/ Vandalism	Total
Jurisdiction			
Tennessee	1	4	5
Franklin Police Department	1	0	1
Memphis Police Department	0	1	1
Shelby County Sheriff's Department	0	3	3

2009 Anti-Multi Religious Bias With Offense Type

Offense Type	Burglary	Destruction/ Damage/ Vandalism	Total
Jurisdiction			
Tennessee	1	1	2
Elizabethton Police Department	0	1	1
Fentress County Sheriff's Department	1	0	1



2009 Anti-Male Homosexual Bias With Offense Type

Offense Type	Aggravated Assault	Simple Assault	Intimidation	Destruction/ Damage/ Vandalism	Robbery	Theft From Motor Vehicle	Theft - All Other Larceny	Total
Jurisdiction								
Tennessee	4	7	5	7	2	1	1	27
Clarksville Police Department	0	0	1	1	0	1	0	3
Cleveland Police Department	0	0	1	0	0	0	0	1
Elizabethton Police Department	0	0	1	0	0	0	0	1
Hardin County Sheriff's Department	0	1	0	0	0	0	0	1
Knox County Sheriff's Department	0	0	1	0	0	0	0	1
Memphis Police Department	2	4	0	3	2	0	1	12
Nashville Metro Police Department	1	1	0	1	0	0	0	3
Sullivan County Sheriff's Department	0	1	0	0	0	0	0	1
Tracy City Police Department	1	0	1	1	0	0	0	3
University of Tennessee at Knoxville	0	0	0	1	0	0	0	1

2009 Anti-Female Homosexual Bias With Offense Type

Offense Type	Sexual Assault W/Object	Aggravated Assault	Simple Assault	Intimidation	Destruction/ Damage/ Vandalism	Total
Jurisdiction						
Tennessee	1	1	2	2	3	9
Kingsport Police Department	0	0	0	1	0	1
Hendersonville Police Department	0	0	0	0	2	2
Johnson City Police Department	0	0	1	0	0	1
Memphis Police Department	1	0	1	1	1	4
Nashville Metro Police Department	0	1	0	0	0	1

2009 Anti-Homosexual Gays and Lesbians Bias With Offense Type

Offense Type	Aggravated Assault	Simple Assault	Intimidation	Destruction/ Damage/Vandalism	Theft - All Other Larceny	Total
Jurisdiction						
Tennessee	1	5	1	6	2	15
Crossville Police Department	0	0	0	1	0	1
Elizabethton Police Department	0	0	0	2	0	2
Hardin County Sheriff's Department	0	1	0	0	0	1
Humboldt Police Department	0	0	0	1	0	1
Marshall County Sheriff's Department	0	1	0	1	0	2
Memphis Police Department	1	2	0	1	2	6
Sullivan County Sheriff's Department	0	1	1	0	0	2



2009 Anti-Hetrosexual Bias With Offense Type

Offense Type	Destruction/ Damage/ Vandalism	Total
Jurisdiction		
Tennessee	1	1
Memphis Police Department	1	1

2009 Unknown Bias With Offense Type

Offense Type	Murder	Aggravated Assault	Simple Assault	Intimidation	Stalking	Arson	Burglary	Counterfeiting /Forgery
Jurisdiction								
Tennessee	1	5	20	28	2	1	12	7
Ashland City Police Department	0	0	0	0	0	0	0	0
Bledsoe County Sheriff's Department	0	0	0	0	0	0	1	0
Camden Police Department	0	0	0	0	0	0	0	0
Cleveland Police Department	0	0	0	0	0	0	0	0
Cocke County Sheriff's Department	0	0	0	2	0	0	0	0
Dickson Police Department	0	0	0	0	0	0	0	3
Elizabethton Police Department	0	1	6	3	0	0	5	2
Fentress County Sheriff's Department	0	0	0	0	0	0	0	0
Germantown Police Department	0	0	0	0	0	0	0	0
Giles County Sheriff's Department	0	0	0	0	0	0	0	0
Haywood County Sheriff's Department	0	0	0	0	0	0	0	0
Jefferson City Police Department	0	0	0	0	0	0	0	1
Johnson City Police Department	0	0	0	0	1	0	0	0
Knoxville Police Department	0	0	1	0	0	0	0	0
Mason Police Department	0	0	0	14	0	0	0	0
Memphis Police Department	0	0	0	1	0	0	1	1
Murfreesboro Police Department	0	0	0	0	0	0	1	0
Nashville Metro Police Department	0	0	5	0	0	0	0	0
Polk County Sheriff's Department	0	0	0	0	0	0	0	0
Shelby County Sheriff's Department	1	4	5	8	0	1	2	0
South Pittsburg Police Department	0	0	3	0	1	0	0	0
University of Tennessee at Chattanooga	0	0	0	0	0	0	2	0
Van Buren County Sheriff's Department	0	0	0	0	0	0	0	0



2009 Unknown Bias With Offense Type (cont.)

Offense Type	Destruction/ Damage/ Vandalism	Embezzlement	Fraud - Credit Card/ATM	Fraud - Imperson ation	Fraud - Wire	Theft - Shoplifting	Theft From Building	Theft From Coin Machine
Jurisdiction								
Tennessee	46	1	2	1	1	3	1	2
Ashland City Police Department	0	0	0	0	0	0	0	0
Bledsoe County Sheriff's Department	0	0	0	0	0	0	0	0
Camden Police Department	0	0	1	0	0	0	0	0
Cleveland Police Department	0	0	0	0	1	0	0	0
Cocke County Sheriff's Department	0	0	0	0	0	0	0	0
Dickson Police Department	0	0	0	0	0	0	0	0
Elizabethton Police Department	11	1	0	0	0	3	0	0
Fentress County Sheriff's Department	1	0	0	0	0	0	0	0
Germantown Police Department	0	0	0	0	0	0	0	0
Giles County Sheriff's Department	1	0	1	0	0	0	0	0
Haywood County Sheriff's Department	3	0	0	0	0	0	0	0
Jefferson City Police Department	0	0	0	0	0	0	0	0
Johnson City Police Department	6	0	0	0	0	0	0	0
Knoxville Police Department	0	0	0	0	0	0	0	0
Mason Police Department	0	0	0	0	0	0	0	0
Memphis Police Department	1	0	0	1	0	0	0	0
Murfreesboro Police Department	1	0	0	0	0	0	0	0
Nashville Metro Police Department	5	0	0	0	0	0	0	0
Polk County Sheriff's Department	1	0	0	0	0	0	0	0
Shelby County Sheriff's Department	14	0	0	0	0	0	0	0
South Pittsburg Police Department	1	0	0	0	0	0	1	0
University of Tennessee at Chattanooga	1	0	0	0	0	0	0	2
Van Buren County Sheriff's Department	0	0	0	0	0	0	0	0



2009 Unknown Bias with Offense Type (cont.)

Offense Type	Theft From Motor Vehicle	Theft - All Other Larceny	Motor Vehicle Theft	Stolen Property Offenses	Total
Jurisdiction					
Tennessee	14	13	3	1	57
Ashland City Police Department	1	0	0	0	1
Bledsoe County Sheriff's Department	0	0	0	0	0
Camden Police Department	0	0	0	0	1
Cleveland Police Department	0	0	0	0	3
Cocke County Sheriff's Department	0	0	0	0	3
Dickson Police Department	0	2	0	0	16
Elizabethton Police Department	6	4	1	0	15
Fentress County Sheriff's Department	0	0	0	0	1
Germantown Police Department	0	1	0	0	0
Giles County Sheriff's Department	0	0	0	0	2
Haywood County Sheriff's Department	0	0	0	0	4
Jefferson City Police Department	0	0	0	0	1
Johnson City Police Department	0	0	0	0	7
Knoxville Police Department	0	0	0	0	14
Mason Police Department	0	0	0	0	3
Memphis Police Department	0	0	0	1	3
Murfreesboro Police Department	0	0	0	0	6
Nashville Metro Police Department	0	1	0	0	5
Polk County Sheriff's Department	0	0	0	0	17
Shelby County Sheriff's Department	0	1	1	0	18
South Pittsburg Police Department	0	0	0	0	4
University of Tennessee at Chattanooga	7	3	0	0	3
Van Buren County Sheriff's Department	0	1	1	0	0

2009 Bias Offenses by African American Females

Offender Age	Under 18	18 - 24	25 - 34	35 - 44
Bias Motivation				
Anti-Male Homosexual (Gay)	0	1	0	0
Anti-Female Homosexual (Lesbian)	1	1	0	0
Anti-Mental Disability	0	0	1	0
Unknown	2	5	2	2

2009 Bias Offenses by White Females

Offender Age	Under 18	18 - 24	25 - 34	35 - 44	45 - 54	65 and over
Bias Motivation						
Anti-White	1	1	0	1	0	0
Anti-African American	0	5	0	0	2	0
Anti-American Indian/Alaskan Native	0	0	1	0	0	0
Anti-Hispanic	0	0	0	0	0	1
Anti-Other Ethnicity/National Origin	0	0	0	1	0	0
Anti-Catholic	0	0	0	0	0	0
Unknown	2	1	4	5	1	0



2009 Bias Offenses by Females with Unknown Race

Offender Age	
Bias Motivation	Unknown
Unknown	3

2009 Bias Offenses by White Males

Offender Age								
Bias Motivation	Under 18	18 - 24	25 - 34	35 - 44	45 - 54	55 - 64	65 and over	Unknown
Anti-White	1	0	2	0	1	0	1	0
Anti-African American	12	14	7	4	2	1	0	2
Anti-Multi-Racial Group	0	1	0	0	0	0	0	0
Anti-Hispanic	0	4	1	1	0	0	1	2
Anti-Other Ethnicity/National Origin	0	0	1	0	1	0	0	0
Anti-Jewish	1	0	0	0	1	0	0	0
Anti-Multi-Religious Group	0	1	1	0	0	0	0	0
Anti-Other Religion	0	0	1	0	0	0	0	1
Anti-Male Homosexual (Gay)	0	3	3	0	1	0	0	1
Anti-Female Homosexual (Lesbian)	0	0	1	0	0	0	0	1
Anti-Homosexual (Gays and Lesbians)	3	4	0	1	0	0	0	0
Anti-Physical Disability	0	0	0	1	0	0	0	0
Anti-Mental Disability	0	1	0	0	0	0	0	0
Unknown	2	11	19	5	5	1	0	5

2009 Bias Offenses by African American Males

Offender Age						
Bias Motivation	Under 18	18 - 24	25 - 34	35 - 44	45 - 54	Unknown
Anti-White	1	1	2	1	0	2
Anti-African American	0	0	1	0	0	2
Anti-Asian/Pacific Islander	0	0	0	1	0	0
Anti-Hispanic	1	0	0	1	0	1
Anti-Other Religion	0	0	0	0	0	1
Anti-Male Homosexual (Gay)	1	8	4	0	0	0
Anti-Female Homosexual (Lesbian)	0	1	0	1	0	0
Anti-Homosexual (Gays and Lesbians)	0	0	1	0	0	0
Unknown	3	9	2	0	1	0

2009 Bias Offenses by Males with Unknown Race

Offender Age			
Bias Motivation	Under 18	55 - 64	Unknown
Anti-Hispanic	0	1	0
Anti-Jewish	1	0	0
Anti-Protestant	0	0	1
Unknown	0	0	1



2009 Bias With Offense Type by Location - Statewide

Type of Location	Residence/ Home	Air/ Bus / Train Terminal	Bank/ Savings and Loan	Bar/ Night Club	Commercial / Office Building	Convenience Store	Department / Discount Store	Drug Store/ Doctors Office/Hospital
Bias Motivation								
Racial Bias Total	42	0	1	1	2	4	0	1
Anti-White	11	0	1	0	0	0	0	1
Anti-African American	30	0	0	1	2	3	0	0
Anti-American Indian/Alaskan Native	1	0	0	0	0	0	0	0
Anti-Asian/Pacific Islander	0	0	0	0	0	0	0	0
Anti-Multi-Racial Group	0	0	0	0	0	1	0	0
Ethnicity/National Origin Bias Total	11	0	0	0	1	0	0	0
Anti-Hispanic	10	0	0	0	1	0	0	0
Anti-Other Ethnicity/National Origin	1	0	0	0	0	0	0	0
Religious Bias Total	4	0	0	0	0	0	0	0
Anti-Jewish	3	0	0	0	0	0	0	0
Anti-Catholic	1	0	0	0	0	0	0	0
Anti-Protestant	0	0	0	0	0	0	0	0
Anti-Multi-Religious Group	0	0	0	0	0	0	0	0
Anti-Other Religion	0	0	0	0	0	0	0	0
Sexual Bias Total	21	2	0	0	1	0	1	0
Anti-Male Homosexual (Gay)	8	0	0	0	0	0	1	0
Anti-Female Homosexual (Lesbian)	7	0	0	0	1	0	0	0
Anti-Homosexual (Gays and Lesbians)	5	2	0	0	0	0	0	0
Anti-Heterosexual	1	0	0	0	0	0	0	0
Disability Bias Total	2	0	0	0	0	0	0	1
Anti-Physical Disability	1	0	0	0	0	0	0	0
Anti-Mental Disability	1	0	0	0	0	0	0	1

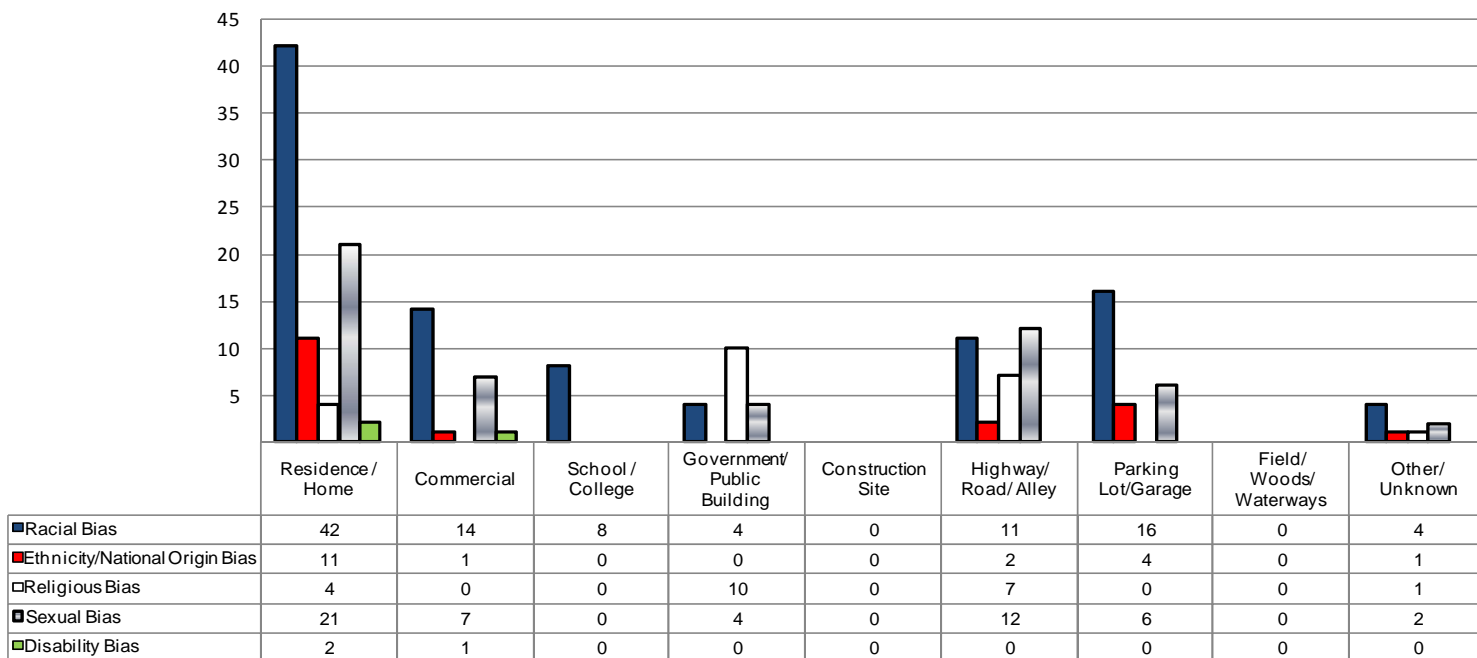
Type of Location	Grocery / Supermarket	Rental Storage Facility	Restaurant	Service / Gas Station	Specialty Store (TV, Fur, etc.)	School / College	Church/ Synagogue/ Temple	Government/ Public Building
Bias Motivation								
Racial Bias Total	0	1	3	0	1	8	2	0
Anti-White	0	1	0	0	1	1	0	0
Anti-African American	0	0	3	0	0	6	2	0
Anti-American Indian/Alaskan Native	0	0	0	0	0	0	0	0
Anti-Asian/Pacific Islander	0	0	0	0	0	0	0	0
Anti-Multi-Racial Group	0	0	0	0	0	1	0	0
Ethnicity/National Origin Bias Total	0	0	0	0	0	0	0	0
Anti-Hispanic	0	0	0	0	0	0	0	0
Anti-Other Ethnicity/National Origin	0	0	0	0	0	0	0	0
Religious Bias Total	0	0	0	0	0	0	10	0
Anti-Jewish	0	0	0	0	0	0	0	0
Anti-Catholic	0	0	0	0	0	0	0	0
Anti-Protestant	0	0	0	0	0	0	6	0
Anti-Multi-Religious Group	0	0	0	0	0	0	2	0
Anti-Other Religion	0	0	0	0	0	0	2	0
Sexual Bias Total	0	0	1	2	0	0	0	4
Anti-Male Homosexual (Gay)	0	0	1	2	0	0	0	1
Anti-Female Homosexual (Lesbian)	0	0	0	0	0	0	0	0
Anti-Homosexual (Gays and Lesbians)	0	0	0	0	0	0	0	3
Anti-Heterosexual	0	0	0	0	0	0	0	0
Disability Bias Total	0	0	0	0	0	0	0	0
Anti-Physical Disability	0	0	0	0	0	0	0	0
Anti-Mental Disability	0	0	0	0	0	0	0	0



2009 Bias With Offense Type by Location - Statewide (cont.)

Type of Location	Jail/ Prison	Construction Site	Highway/ Road/ Alley	Parking Lot / Garage	Field / Woods	Other/ Unknown
Bias Motivation						
Racial Bias Total	2	0	11	16	0	4
Anti-White	2	0	3	3	0	1
Anti-African American	0	0	8	10	0	3
Anti-American Indian/Alaskan Native	0	0	0	0	0	0
Anti-Asian/Pacific Islander	0	0	0	1	0	0
Anti-Multi-Racial Group	0	0	0	2	0	0
Ethnicity/National Origin Bias Total	0	0	2	4	0	1
Anti-Hispanic	0	0	2	2	0	1
Anti-Other Ethnicity/National Origin	0	0	0	2	0	0
Religious Bias Total	0	0	7	0	0	1
Anti-Jewish	0	0	5	0	0	0
Anti-Catholic	0	0	0	0	0	0
Anti-Protestant	0	0	0	0	0	0
Anti-Multi-Religious Group	0	0	0	0	0	0
Anti-Other Religion	0	0	2	0	0	1
Sexual Bias Total	0	0	12	6	0	2
Anti-Male Homosexual (Gay)	0	0	11	4	0	0
Anti-Female Homosexual (Lesbian)	0	0	1	0	0	0
Anti-Homosexual (Gays and Lesbians)	0	0	0	2	0	2
Anti-Heterosexual	0	0	0	0	0	0
Disability Bias Total	0	0	0	0	0	0
Anti-Physical Disability	0	0	0	0	0	0
Anti-Mental Disability	0	0	0	0	0	0

2009 Bias Motivated Offenses by Location Group



Unknown Bias has been excluded from the table accounting for 164 Bias Offenses.



TIBRS Group A

Offense Definitions

Arson – To unlawfully and intentionally damage, or attempt to damage, any real or personal property by fire or incendiary device.

Assault Offenses – An unlawful attack by one person on another.

Aggravated Assault – An unlawful attack by one person upon another wherein the offender uses a weapon or displays it in a threatening manner, or the victim suffers obvious severe or aggravated bodily injury involving apparent broken bones, loss of teeth, possible internal injury, severe laceration or loss of consciousness.

Simple Assault – An unlawful physical attack by one person upon another where neither the offender displays a weapon, nor the victim suffers obvious severe or aggravated bodily injury involving apparent broken bones, loss of teeth, possible internal injury, severe laceration or loss of consciousness.

Intimidation – To unlawfully place another person in reasonable fear of bodily harm through the use of threatening words and/or other conduct, but without displaying a weapon or subjecting the victim to actual physical attack.

Stalking – To intentionally and repeatedly follow or harass another person in such a manner as would cause that person to be in reasonable fear of being assaulted, suffering bodily injury or death.

Bribery – The offering, giving, receiving or soliciting of any thing of value (i.e., a bribe, gratuity or kickback) to sway the judgment or action of a person in a position of trust or influence.

Burglary/Breaking and Entering – The unlawful entry into a building or other structure with the intent to commit a felony or a theft.

Counterfeiting/Forgery – The altering, copying or imitation of something, without authority or right, with the intent to deceive or defraud by passing the copy or thing altered or imitated as that which is original or genuine; or the selling, buying or possession of an altered, copied or imitated thing with the intent to deceive or defraud.

Destruction/Damage/Vandalism of Property – To willfully or maliciously destroy, damage, deface or otherwise injure real or personal property without the consent of the owner or the person having custody or control of it.

Drug/Narcotic Offenses – The violation of laws prohibiting the production, distribution, and/or use of certain controlled substances and the equipment or devices utilized in their preparation and/or use.

Drug/Narcotic Violations – The unlawful cultivation, manufacture, distribution, sale, purchase, use, possession, transportation or importation of any controlled drug or narcotic substance.



Drug/Narcotic Offenses (continued)

Drug Equipment Violations – The unlawful manufacture, sale, purchase, possession or transportation of equipment or devices utilized in preparing and/or using drugs or narcotics.

Embezzlement – The unlawful misappropriation by an offender to his/her own use or purpose of money, property, or some other thing of value entrusted to his/her care, custody or control.

Extortion/Blackmail – To unlawfully obtain money, property, or any other thing of value, either tangible or intangible, through the use or threat of force, misuse of authority, threat of criminal prosecution, threat of destruction of reputation or social standing or through other coercive means.

Fraud Offenses – The intentional perversion of the truth for the purpose of inducing another person or other entity in reliance upon it to part with some thing of value or surrender a legal right.

False Pretenses/Swindle/Confidence Game – The intentional misrepresentation of existing facts or conditions, or the use of some other deceptive scheme or device to obtain money, goods, or other things of value.

Credit Card/Automatic Teller Machine Fraud – The unlawful use of a credit or debit card or automatic teller machine for fraudulent purposes.

Impersonation – Falsely representing one's identity or position, and acting in the character or position thus unlawfully assumed, to deceive others and thereby gain a profit or advantage, enjoy some right or privilege, or subject another person or entity to an expense, charge, or liability which would not have otherwise been incurred.

Welfare Fraud – The use of deceitful statements, practices or devices to unlawfully obtain welfare benefits.

Wire Fraud – The use of an electric or electronic communications facility to intentionally transmit a false and/or deceptive message in furtherance of a fraudulent activity.

Gambling Offenses – To unlawfully bet or wager money or something else of value; assist, promote or operate a game of chance for money or some other stake; possess or transmit wagering information; manufacture, sell, purchase, possess or transport gambling equipment, devices or goods; or tamper with the outcome of a sporting event or contest to gain a gambling advantage.

Betting/Wagering – To unlawfully stake money or something else of value on the happening of an uncertain event or on the ascertainment of a fact in dispute.

Operating/Promoting/Assisting Gambling – To unlawfully operate, promote or assist in the operation of a game of chance, lottery or other gambling activity.

Gambling Equipment Violations – To unlawfully manufacture, sell, buy, possess or transport equipment, devices and/or goods used for gambling purposes.

Sports Tampering – To unlawfully alter, meddle in or otherwise interfere with a sporting contest or event for the purpose of gaining a gambling advantage.



Homicide Offenses

Murder and Nonnegligent Manslaughter – The willful (nonnegligent) killing of one human being by another.

Negligent Manslaughter – The killing of another person through negligence.

Justifiable Homicide – The killing of a perpetrator of a serious criminal offense by a peace officer in the line of duty; or the killing, during the commission of a serious criminal offense, of the perpetrator by a private individual.

* Justifiable homicide is not an actual offense, is not considered a crime and is not included in an agency's crime counts.

Kidnapping/Abduction – The unlawful seizure, transportation, and/or detention of a person against his/her will, or of a minor without the consent of his/her custodial parent(s) or legal guardian.

Larceny/Theft Offenses – The unlawful taking, carrying, leading or riding away of property from the possession, or constructive possession, of another person.

Pocket-Picking – The theft of articles from another person's physical possession by stealth where the victim does not become immediately aware of the theft.

Purse Snatching – The grabbing or snatching of a purse, handbag, etc., from the physical possession of another person.

Shoplifting – The theft, by someone other than an employee of the victim, of goods or merchandise exposed for sale.

Theft from Building – A theft from within a building which is either open to the general public or of which the offender has legal access.

Theft from Coin-Operated Machine or Device – A theft from a machine or device which is operated or activated by the use of coins.

Theft from Motor Vehicle – The theft of articles from a motor vehicle, whether locked or unlocked.

Theft of Motor Vehicle Parts or Accessories – The theft of any part or accessory affixed to the interior or exterior of a motor vehicle in a manner which would make the item an attachment of the vehicle or necessary for its operation.

All Other Larceny – All thefts which do not fit any of the definitions of the specific subcategories of Larceny/Theft listed above.

Motor Vehicle Theft – The theft of a motor vehicle.

Pornography/Obscene Material – The violation of laws or ordinances prohibiting the manufacture, publishing, sale, purchase or possession of sexually explicit material, e.g., literature, photographs, etc.



Weapon Law Violations – The violation of laws or ordinances prohibiting the manufacture, sale, purchase, transportation, possession, concealment or use of firearms, cutting instruments, explosives, incendiary devices or other deadly weapons. This category includes violations such as the manufacture, sale or possession of deadly weapons; carrying deadly weapons, concealed or openly; using, manufacturing, etc., silencers; and furnishing deadly weapons to minors.

TIBRS Group B Offense Definitions

There are eleven Group B offense categories and they encompass all of the crimes which are not Group A offenses, with the exception of most traffic offenses which TIBRS does not collect information on.

Bad Checks – Knowingly and intentionally writing and/or negotiating checks drawn against insufficient or nonexistent funds.

Curfew/Loitering/Vagrancy Violations – The violation of a court order, regulation, ordinance or law requiring the withdrawal of persons from the streets or other specified areas; prohibiting persons from remaining in an area or place in an idle or aimless manner; or prohibiting persons from going from place to place without visible means of support.

Disorderly Conduct – Any behavior that tends to disturb the public peace or decorum, scandalize the community or shock the public sense of morality.

Driving Under the Influence – Driving or operating a motor vehicle or common carrier while mentally or physically impaired as the result of consuming an alcoholic beverage or using a drug or narcotic.

Drunkenness – To drink alcoholic beverages to the extent that one's mental faculties and physical coordination are substantially impaired.

Family Offense, Nonviolent – Unlawful, nonviolent acts by a family member (or legal guardian) which threaten the physical, mental or economic well-being or morals of another family member and which are not classifiable as other offenses, such as Assault, Incest, Statutory Rape, etc.

Liquor Law Violations – The violation of laws or ordinances prohibiting the manufacture, sale, purchase, transportation, possession or use of alcoholic beverages.

Peeping Tom – To secretly look through a window, doorway, keyhole or other aperture for the purpose of voyeurism.

Runaway – A person under 18 years of age who has left home without the permission of his/her parent(s) or legal guardian.

Trespass of Real Property – To unlawfully enter land, a dwelling or other real property.

All Other Offenses – All crimes which are not Group A offenses and not included in one of the specifically named Group B crime categories listed above.

Includes: Contempt of Court, Failure to Appear, Violation of Probation / Parole.

