

**Contents**

Tennessee Valley Authority’s Payments in Lieu of Taxes ..... 1

    TVA Payments in Lieu of Taxes Continue to Fluctuate ..... 4

    TVA’s Efforts to Meet Power Needs and Remain Within Its Debt Limit ..... 6

        Short-Term System-Management Strategies..... 6

        Long-Term System-Management Strategies..... 7

Potential for Changes in TVA’s Customer Base ..... 15

The Shift Away from Coal: Environmental and Business Reasons ..... 16

    Fossil Plant Retirements Required by Environmental Agreements ..... 17

    Fossil Plant Retirements for Business Reasons ..... 18

    New Energy Sources to Meet the Region’s Needs ..... 20

References ..... 22

Appendix A: TVA’s Allocation Formula..... 28

Appendix B: Tennessee’s Allocation Formula..... 30

Appendix C: Distribution of Counties’ Share of TVA Payments in Lieu of Taxes to Tennessee by Tennessee Fiscal Year..... 32

Appendix D: Distribution of Cities’ Share of TVA Payments in Lieu of Taxes to Tennessee by Tennessee Fiscal Year..... 35

Appendix E: Impact Payments Distributed to Counties in Areas Affected by TVA Construction by Tennessee Fiscal Year..... 46

Appendix F: Impact Payments Distributed to Cities in Areas Affected by TVA Construction by Tennessee Fiscal Year..... 49

Appendix G: TVA 2019 Integrated Resource Plan Recommendations by Resource Type ..... 60

## Tennessee Valley Authority's Payments in Lieu of Taxes

The Tennessee Advisory Commission on Intergovernmental Relations was directed by the Electric Generation and Transmission Cooperative Act of 2009 (Section 4 of Public Chapter 475, Acts of 2009) to monitor changes in the wholesale distribution of electric power by the Tennessee Valley Authority (TVA) and its distributors for possible effects on the Authority's payments in lieu of taxes (PILOTs) to the states in the Valley region. The commission's report was to "include recommendations, if any, on adjustments to the state tax system that would keep the state and local governments whole from such future changes." The Act authorized the creation of nonprofit membership cooperatives to generate and transmit electricity in Tennessee. At the time, one such co-op already owned a power-generating facility in Mississippi, and the legislature was concerned that, having authorized them, they had opened the door to a potential decline in TVA's payments to the states if the co-ops began selling electricity directly to distributors.

After considering several options, including those developed by the commission,<sup>1</sup> the Tennessee General Assembly passed Public Chapter 1035, Acts of 2010, requiring payments equivalent to TVA's Tennessee PILOT from any other entity providing wholesale electric current for resale within the state, such as the electric generation and transmission cooperatives authorized in 2009; any payments made under the 2010 law are added to those received from TVA and distributed through the state's TVA PILOT distribution formula. Public Chapter 1035 was designed to ensure that revenue from power sales in the TVA region would not depend on who produced that power or who sold it, and the Act put to rest immediate concerns about the potential loss of TVA revenue created by the 2009 law. The Act also renewed the requirement that the commission monitor changes in wholesale power supply arrangements in TVA's service area that could affect TVA's payments to the state and its local governments and report to the General Assembly annually. This is the commission's report for the 2026 legislative session.

Among several factors that affect TVA's PILOT, two stand out for this year's report—the first because it involves power sales subject to Public Chapter 1035 and the second because it substantially increased TVA revenue this year:

- Provisions in wholesale power contracts that 148 of TVA's 153 distributors have signed grant these distributors flexibility to obtain renewable energy from sources other than TVA, potentially reducing TVA revenue and, therefore, the

---

<sup>1</sup> Tennessee Advisory Commission on Intergovernmental Relations 2010.

PILOT. Power these distributors purchase from entities other than TVA is subject to the equivalent payments required under Public Chapter 1035, Acts of 2010, but the payments can be reduced or even eliminated by credits claimed for other taxes paid. Sixteen distributors in Tennessee are currently purchasing power from entities other than TVA.<sup>2</sup> As of January 2026, the credits claimed have exceeded the payments that would otherwise be owed under the Act, and as a result, no payments have been required.<sup>3</sup>

- TVA’s 5.25% wholesale rate increase—excluding adjustments made for the cost of fuel—that went into effect October 1, 2024, combined with a higher sales volume, increased TVA revenue by \$690 million from what it otherwise would have been in federal fiscal year 2024-25.<sup>4</sup>

TVA’s total PILOT is based on 5% of prior-year gross proceeds<sup>5</sup> from power sales, and funds are divided among the eight states in which TVA owns power property<sup>6</sup> based both on revenues from power sold by TVA and on the value of TVA power property located in each state.<sup>7</sup> See appendix A for an explanation of TVA’s allocation formula.

Other factors discussed in the report that are either affecting TVA’s PILOT this year or could in the future include the weather, changes in TVA’s customer base, rebates for TVA’s distributors, changes in TVA’s supply system resulting from decisions to retire old or build new power facilities, efforts to improve energy efficiency, TVA’s debt limit, and the threat of privatization. Of these, the debt limit, which has not been raised since 1979,<sup>8</sup> and the threat of privatization were among the reasons given by power distributors in the region for seeking authorization to form the generation and transmission cooperatives authorized by the 2009 Act. TVA’s debt ceiling remains \$30 billion, which

---

<sup>2</sup> Email from Austin Hebbeler, program manager, origination and renewables, Tennessee Valley Authority, January 8, 2026.

<sup>3</sup> Email from Rayna Ware, assistant director, financial control, Tennessee Department of Revenue, January 20, 2026.

<sup>4</sup> Tennessee Valley Authority 2025a and 2024b.

<sup>5</sup> TVA interprets “gross proceeds” as the proceeds from the sale of power to municipalities, cooperatives, and industries. The TVA Act specifically excludes TVA’s sales to federal agencies from the PILOT calculation.

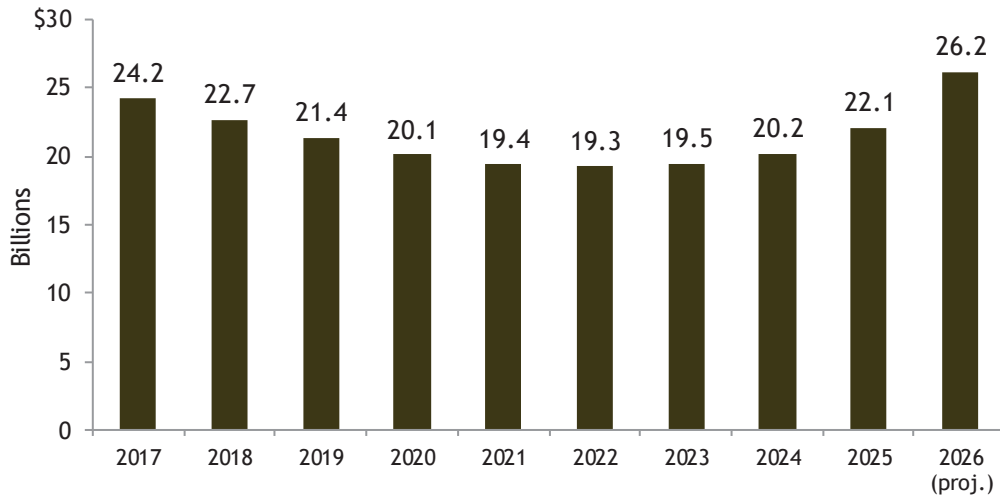
<sup>6</sup> TVA interprets “power property” to include facilities that generate electricity, property used to transmit electricity, coal assets, and a portion of the overall value of TVA’s reservoir properties.

<sup>7</sup> Although TVA buys power from other sources, those purchases do not affect the amount each state receives from its PILOTs.

<sup>8</sup> 16 United States Code 831 n-4(a).

because of inflation now has the approximate buying power that \$7 billion would have had in 1979,<sup>9</sup> but the threat of privatization has diminished at least for the time being.<sup>10</sup> Figure 1 shows the level of TVA’s debt since 2017.

**Figure 1. Tennessee Valley Authority Statutory Debt at Federal Fiscal Year End (in billions)**



Source: Tennessee Valley Authority 2019a, 2023b, 2024b, 2025a, and 2025b; and email from Kelly Lopez, program manager, accounting policy and research, Tennessee Valley Authority, December 17, 2025.

To manage within its \$30 billion debt limit, TVA has adopted several innovative but by its own account costly financing techniques, some of which can alter the amount of PILOT revenue paid directly to states. The lease-and-lease-back technique used so far to finance the expansion of power production in Tennessee does not affect the amount of the PILOT paid directly to Tennessee, but the sale-and-lease-back technique used at one of its plants in Mississippi reduced the amount paid directly to that state, and the potential for the same exists throughout the region. The difference is in who owns the property and whether it is subject to state and local taxes.

None of these issues appear to warrant legislative action at this time but should continue to be monitored. For the purposes of monitoring compliance with Public Chapter 1035, the commission finds it would be beneficial for TVA to provide the Tennessee Department of Revenue with a list of the distributors that are purchasing power from

<sup>9</sup> TACIR staff analysis based on US Department of Labor, Bureau of Labor Statistics “PPI Commodity Data for Fuels and Related Products and Power: Electric Power.” If the \$30 billion debt ceiling had been increased for inflation, it would have been \$128 billion at the end of federal fiscal year 2025.

<sup>10</sup> Sher 2018; and Collins 2018.

other entities, which could be added to the information that TVA already provides the department annually about its payments to Tennessee.

### ***TVA Payments in Lieu of Taxes Continue to Fluctuate***

TVA's actual payments in lieu of taxes for federal fiscal year 2024-25 totaled \$600 million, of which \$405 million was paid to Tennessee governments, including \$3.4 million in direct payments to counties. This was an increase of \$12 million over payments to all states in the previous fiscal year. Payments for the current fiscal year, federal fiscal year 2025-26, are estimated to increase by \$67 million to a total of \$667 million.<sup>11</sup> The increase was primarily driven by higher effective base rates, increased sales volume, and higher effective fuel rates; TVA passes its fuel costs on to customers, thereby increasing TVA revenue when fuel costs increase.<sup>12</sup>

Payments to Tennessee are estimated to increase by \$49 million to a total of \$454 million, of which \$3.4 million will again be paid directly to counties, in federal fiscal year 2025-26.<sup>13</sup> Tennessee's share of TVA's overall payments increased to 68.0% this year because of increases in both the state's share of TVA's power revenue and the value of TVA power property.<sup>14</sup> See table 1.

---

<sup>11</sup> TACIR staff analysis of TVA PILOT data provided in email from Kelly Lopez, program manager, accounting policy and research, Tennessee Valley Authority, December 17, 2025.

<sup>12</sup> Tennessee Valley Authority 2025a.

<sup>13</sup> TACIR staff analysis of TVA PILOT data provided in email from Kelly Lopez, program manager, accounting policy and research, Tennessee Valley Authority, December 17, 2025.

<sup>14</sup> Email from Kelly Lopez, program manager, accounting policy and research, Tennessee Valley Authority, December 17, 2025. See table 1 for previous years.

**Table 1. Tennessee Valley Authority Revenue Sharing  
Distribution to Tennessee by Federal Fiscal Year (in millions)**

		2025-26*	2024-25	2023-24	2022-23	2021-22	2020-21
TVA's Overall PILOT		\$ 667.3	\$ 600.0	\$ 588.2	\$ 610.8	\$ 512.0	\$ 499.6
Tennessee's Percent	x	68.05%	67.46%	66.95%	67.14%	67.40%	67.96%
Tennessee's Amount		\$ 454.1	\$ 404.8	\$ 393.8	\$ 410.0	\$ 345.1	\$ 339.5
Direct Payment to Counties	-	3.4	3.4	3.4	3.4	3.4	3.4
Tennessee's Share		\$ 450.7	\$ 401.4	\$ 390.4	\$ 406.7	\$ 341.7	\$ 336.1

\* Estimate based on unaudited gross receipts. TVA distributes payments monthly from October through August based on this estimate, then makes final payment for the fiscal year in September based on audited revenue figures. It is not unusual for the final payment to be adjusted upward from the original estimated amount.

Note: Share distributed to Tennessee may not equal amount allocated to state minus direct payments to counties because of rounding.

Source: Tennessee Valley Authority.

Tennessee's local governments continue to receive more than 40% of the amount TVA allocates to Tennessee for distribution through the state's own formula. Under Tennessee Code Annotated, Section 67-9-101 et seq., this formula distributes a portion of Tennessee's share to cities and counties with additional payments—referred to as impact payments—set aside for local governments in counties with TVA construction. The rest is reserved for the state. Distributions through the formula, which are calculated on a state fiscal year basis, are directly affected by the increasing total payment to Tennessee in federal fiscal year 2025-26 and by TVA construction projects. See appendix B for an explanation of Tennessee's allocation formula.

For state fiscal year 2025-26, allocations for the state's own agencies will increase by \$19.8 million. Allocations for counties and cities—excluding impact payments that are set aside for local governments in counties with TVA construction—will increase by \$14.1 million and \$5.6 million, respectively, because of the estimated increase in TVA's overall PILOT and Tennessee's increased share. The total amount of impact payments distributed to areas affected by TVA construction, however, will decrease by \$208,500 for counties and by \$110,200 for cities in state fiscal year 2025-26 because of completed construction projects. Total distributions for state fiscal year 2025-26—amounts retained by the state as well as those distributed to local governments, including impact payments—are estimated to increase by \$39.1 million over those made in state fiscal year 2024-25. These payments are increasing less for the state fiscal year than for the federal fiscal year because the state's fiscal year begins on July 1, three months earlier than the federal fiscal year. As a result, Tennessee's distribution to local governments and the state for state fiscal year 2025-26 includes TVA's payments from the last three months of

federal fiscal year 2024-25 when the PILOT's increase was smaller. See appendixes C and D for the distribution to local governments within the state by county and city since state fiscal year 2018-19, excluding impact payments set aside for local governments in counties with TVA construction, which can be found in appendixes E and F.

### ***TVA's Efforts to Meet Power Needs and Remain Within Its Debt Limit***

To meet the region's power demand, TVA must plan for both short-term and long-term fluctuations in the use of electricity while staying within its statutory debt limit of \$30 billion. The Authority has developed a number of strategies for managing its system to meet demand within these constraints. These strategies have and will continue to affect TVA's payments to Tennessee.

#### **Short-Term System-Management Strategies**

TVA traditionally meets short-term demand increases that result from extreme weather by operating additional facilities that are used only in times of high demand, purchasing power from other utilities, and cutting off power to customers with interruptible contracts that allow TVA and its distributors to interrupt service to them during emergencies<sup>15</sup> in exchange for credits on their power bills.<sup>16</sup> While these strategies have enabled TVA to meet previous record-setting power demands,<sup>17</sup> the fast-moving blast of arctic air that swept most of the country on December 23 and 24, 2022, caused TVA to direct its distributors to reduce their power loads, resulting in intermittent blackouts, including for many customers who did not have interruptible contracts. When demand peaked on December 23 at 33,425 megawatts, coal-fired units at TVA's Cumberland and Bull Run plants were at least partially offline.<sup>18</sup> TVA also experienced outages at some of its natural gas facilities, as well as "issues with third-party contracted plants that are supposed to provide extra supply."<sup>19</sup> According to the *Tennessean*, "Demand for energy ran nearly 35% higher than expected on a normal winter day, while at the same time a few of [TVA's] coal and gas energy facilities were down because of the freezing temperatures."<sup>20</sup> Most recently, on January 22, 2025, TVA saw a record demand of 35,319 megawatts—a 2% increase from the previous record high in 2024. TVA requested that

---

<sup>15</sup> Flessner 2014.

<sup>16</sup> Tennessee Valley Authority 2011.

<sup>17</sup> See Flessner 2014.

<sup>18</sup> Eggers 2022.

<sup>19</sup> Hardiman 2022.

<sup>20</sup> Timms and Friedman 2022.

customers, both commercial and residential, reduce their power usage; with the help of that voluntary reduction, TVA’s system remained stable and met demand.<sup>21</sup> In September 2024, Hurricane Helene caused significant damage in East Tennessee and Western North Carolina in TVA’s service area. TVA continues to evaluate the financial impact of the storm.<sup>22</sup> Although prolonged periods of hotter or colder than normal temperatures can affect the amount and distribution of TVA’s payments to the states, individual extreme weather events may be too short-lived to have a noticeable effect.

### **Long-Term System-Management Strategies**

TVA’s long-term management strategies are laid out in its most recent Integrated Resource Plan (IRP), which was approved by the TVA Board in August 2019.<sup>23</sup> The plan, a response to changes in the utility industry including lower-cost natural gas and renewables as well as increased energy conservation efforts,<sup>24</sup> analyzed five strategies for meeting demand within six future scenarios (see figure 2). In 2023, TVA began working on a new IRP that will outline the utility’s strategies through the year 2050.<sup>25</sup> A draft was published for public comment in September 2024, with the intent being that TVA would publish and approve a final IRP in the summer of 2025. The report, however, remains unfinished because the TVA Board did not have enough members for a quorum to approve decisions for most of 2025. While it does not yet have a defined timeline for the final IRP, TVA hopes to announce a path forward in the coming months.<sup>26</sup>

---

<sup>21</sup> Dassow 2025b.

<sup>22</sup> Tennessee Valley Authority 2024b.

<sup>23</sup> Tennessee Valley Authority 2019c and “2019 Integrated Resource Plan.”

<sup>24</sup> Tennessee Valley Authority 2019d.

<sup>25</sup> Tennessee Valley Authority 2023c and “2025 Integrated Resource Plan.”

<sup>26</sup> Email from M. Hunter Reed, IRP Project Manager, Tennessee Valley Authority, January 5, 2026.

**Figure 2. Planning Scenarios and Strategies Used in TVA’s 2019 IRP**

SCENARIOS		STRATEGIES	
1	<b>CURRENT OUTLOOK</b> which represents TVA's current forecast for these key uncertainties and reflects modest economic growth offset by increasing efficiencies;	A	<b>BASE CASE</b> which represents TVA's current assumptions for resource costs and applies a planning reserve margin constraint. This constraint applies in every strategy and represents the minimum amount of capacity required to ensure reliable power;
2	<b>ECONOMIC DOWNTURN</b> which represents a prolonged stagnation in the economy, resulting in declining loads (customers using less power) and delayed expansion of new generation;	B	<b>PROMOTE DISTRIBUTED ENERGY RESOURCES</b> which incents DER to achieve higher, long-term penetration levels. The DER options include energy efficiency, demand response, combined heat and power, distributed solar and storage;
3	<b>VALLEY LOAD GROWTH</b> which represents economic growth driven by migration into the Valley and a technology-driven boost to productivity, underscored by increased electrification of industry and transportation;	C	<b>PROMOTE RESILIENCY</b> which incents small, agile capacity to maximize operational flexibility and the ability to respond to short-term disruptions on the power system;
4	<b>DECARBONIZATION</b> which is driven by a strong push to curb greenhouse gas emissions due to concern over climate change, resulting in high CO <sub>2</sub> emission penalties and incentives for non-emitting technologies;	D	<b>PROMOTE EFFICIENT LOAD SHAPE</b> which incents targeted electrification (by incentivizing customers to increase electricity usage in off-peak hours) and demand response (by incentivizing customers to reduce electricity usage during peak hours). This strategy promotes efficient energy usage for all customers, including those with low income;
5	<b>RAPID DER ADOPTION</b> which is driven by growing consumer awareness and preference for energy choice, coupled with rapid advances in technologies, resulting in high penetration of distributed generation, storage and energy management;	E	<b>PROMOTE RENEWABLES</b> which incents renewables at all scales (from utility size to residential) to meet growing or existing consumer demand for renewable energy.
6	<b>NO NUCLEAR EXTENSIONS</b> which is driven by a regulatory challenge to relicense existing nuclear plants and construct new, large-scale nuclear. This scenario also assumes subsidies to drive small modular reactor (SMR) technology advancements and improved economics.		

Source: Tennessee Valley Authority 2019c.

These strategies could affect the amount and distribution of the Authority’s payments to the states in the future. TVA has been continually updating its generating system to meet the needs of the region’s growing economy and tighter air-quality standards. As early as the 1960s and 1970s, TVA was investing heavily in nuclear power for both of these reasons. More recently, the Authority has invested in natural gas-powered facilities to meet periodic surges in demand caused by the weather. TVA’s implementation of its long-term management strategies, which will affect the distribution of its PILOT, will be affected by the economics of power production and the requirements of the Clean Air Act (CAA) and other environmental regulations as well as TVA’s debt limit.

## *TVA's Debt Limit and Financing Arrangements*

Earlier concerns about TVA's financing arrangements for new generating capacity in the region and their potential effects on PILOTs in the region and across the state have diminished as the Authority has modified its strategies. To stay within the \$30 billion debt ceiling imposed on it by the Congress in 1979,<sup>27</sup> TVA began using new financing methods,<sup>28</sup> some of which affected the distribution of PILOT funds for some states, including the amount those states had available to allocate to their counties and cities. One technique is the leasing of generating facilities.<sup>29</sup>

Shortly before the Electric Generation and Transmission Cooperative Act was passed in 2009, TVA entered into an agreement with a group of its distributors organized as the Seven States Power Corporation, a nonprofit company.<sup>30</sup> Seven States purchased an interest in TVA's Southaven, Mississippi, power plant with the agreement that TVA would continue to operate it. TVA later bought back all of Seven States' interest in the plant.<sup>31</sup> Under the sale-and-lease-back arrangement, while it was active, all sales of electricity produced at Southaven were through TVA and, therefore, were accounted for as TVA revenues and subject to the PILOT allocation to states.

Leasing arrangements such as the one used in Southaven during this agreement do not change the total amount of the PILOT under the TVA formula, nor do they change the allocation across states. Section 15d(g) of the Tennessee Valley Authority Act of 1933 says that

*. . . power generating and related facilities operated by the Corporation under lease and lease-purchase agreements shall constitute power property held by the Corporation within the meaning of section 13 of this Act . . .*

This provision causes facilities operated by TVA under leases to be included in the calculation of the value of power property under Section 13, which means that the value of TVA property in a state does not change when TVA sells a facility and then leases it back as the Authority did with Southaven. Moreover, this means that when TVA leases

---

<sup>27</sup> 16 United States Code 831 n-4(a).

<sup>28</sup> US General Accounting Office 2003.

<sup>29</sup> Email from Bryan Johnson, senior program manager-taxes, Tennessee Valley Authority, October 29, 2019. For details on existing lease arrangements, see Tennessee Valley Authority 2025a.

<sup>30</sup> Tennessee Valley Authority 2009.

<sup>31</sup> Tennessee Valley Authority 2013.

a facility that it did not previously own, such as the Caledonia plant in Mississippi, the value of TVA power property in the state where the facility is located increases.

Although the change in ownership of the Southaven plant did not affect the amount of TVA's PILOT allocated to each state, it did affect the PILOT distribution to the state of Mississippi. When TVA leases power property owned by other entities, it reduces the PILOT distributed to the state in which the property is located to the extent that it reimburses the plant owners for taxes they must pay to the state or local governments. This reduces the amount of TVA PILOT that goes through the state's own allocation formula. Section 15d(g) of the 1933 act goes on to say,

*. . . that portion of the payment due for any fiscal year under said section 13 to a state where such facilities are located which is determined or estimated by the Board to result from holding such facilities or selling electric energy generated thereby shall be reduced by the amount of any taxes or tax equivalents applicable to such fiscal year paid by the owners or others on account of said facilities to said state and to local taxing jurisdictions therein.*

The initial sale-and-lease-back arrangement at the Southaven plant and the Authority's current lease arrangement at the privately-owned Caledonia plant, also in Mississippi, illustrate the effect of this second provision. Privately owned plants are subject to state and local taxes. Consequently, the portion of the TVA PILOT paid directly to Mississippi, related to Caledonia, was reduced by approximately \$1.4 million in federal fiscal year 2024-25 and will be reduced by an estimated \$1.7 million in 2025-26.<sup>32</sup> This works much like the \$3+ million in direct payments TVA makes to counties in Tennessee. Direct payments are taken off the top of TVA's PILOT to each state, reducing the amount allocated through the state's statutory formula.

The amount allocated through Tennessee's formula, including the amount retained by the state in its general fund, would be reduced by any taxes paid on account of any plant operated through a sale-and-lease-back arrangement if that were to occur. Tennessee might want to mitigate that reduction by modifying its allocation formula to offset the direct payments of taxes by, for example, reducing the allocation to any particular jurisdiction by the amount of the reimbursement TVA made to the plant owners. It is possible, of course, that the reimbursement amount to those jurisdictions could be greater than the allocation through the state formula, so considerable thought would need to go into making such a change.

---

<sup>32</sup> Email from Kelly Lopez, program manager, accounting policy and research, Tennessee Valley Authority, December 17, 2025; and Schoolfield 2017.

TVA has chosen a somewhat different leasing strategy to raise funds for generating expansions in Tennessee without approaching its debt ceiling. Thus far, arrangements in Tennessee have been lease-and-lease-back agreements, which do not jeopardize the amount of the PILOT controlled by Tennessee’s allocation formula. An example is the natural gas combined cycle plant built between 2010 and 2012 in Hawkins County next to the John Sevier fossil plant and leased to a private company in January 2012. The company paid TVA \$1 billion for the lease and then leased the plant back to TVA for 30 years.<sup>33</sup> This lease arrangement changes neither the ownership of the property nor TVA revenues and thus has no effect on the PILOT allocation across states or the amount distributed to Tennessee.

In October 2024, TVA entered a lease-lease agreement involving its Johnsonville plant located in Humphreys County —its first such agreement in several years. Similar to other lease-lease arrangements, it should not reduce payments to Tennessee.<sup>34</sup> Although no other leasing projects are currently approved or under development, TVA anticipates it will use this strategy in the future.<sup>35</sup> But these arrangements can be costly. In the past, TVA has said that

while such leasing transactions allow TVA to diversify its asset financing program, financing an asset by using the proceeds of leasing transactions is typically more costly to TVA than financing an asset with the proceeds of Bonds.<sup>36</sup>

In April 2015, TVA purchased Quantum Utility Generation’s Choctaw combined-cycle natural gas plant near Ackerman, Mississippi. Although the purchase used traditional forms of financing, the acquisition allows for future ownership by Seven States Power Corporation, which could affect the PILOT depending on the type of sale or lease arrangement adopted.<sup>37</sup>

---

<sup>33</sup> Tennessee Valley Authority 2013.

<sup>34</sup> Tennessee Valley Authority 2024a; and email from Kelly Lopez, program manager, accounting policy and research, Tennessee Valley Authority, December 9, 2024.

<sup>35</sup> Email from Kelly Lopez, program manager, accounting policy and research, Tennessee Valley Authority, December 13, 2024.

<sup>36</sup> Tennessee Valley Authority 2013.

<sup>37</sup> Tennessee Valley Authority 2015.

### *Rebalancing Power Sources and Increasing Efficiency*

As TVA continues to rebalance its generating fleet, the resulting changes could cause shifts in the value of power property from state to state and from county to county, which could affect each state's and county's share of TVA's PILOT. Many of these changes—consistent with environmental mandates, the economics of power production, and the recommendations in TVA's 2019 IRP—involve the retirement of existing coal-fired units at TVA power plants. Because retired units are no longer used to produce power, TVA accelerates their depreciation so that only their residual value is included in the PILOT distribution formula.<sup>38</sup> For example, TVA's decision to retire its Bull Run plant in Anderson County in December 2023 and its Cumberland plant in Stewart County—which has two units that will be retired in 2026 and 2028 respectively—resulted in accelerated depreciation for those facilities that contributed to a decrease in Tennessee's share of TVA power property in recent years.<sup>39</sup>

In federal fiscal year 2023-24, however, Tennessee's share of TVA power property increased for the first time in three years. These increases were attributable to TVA's investments in natural gas plants at its Cumberland and Kingston facilities in Tennessee combined with normal depreciation of Browns Ferry nuclear plant in Alabama.<sup>40</sup> Tennessee's share increased again in federal fiscal year 2024-25, attributable to further investment in the Cumberland and Kingston facilities in Tennessee.<sup>41</sup> Future changes could reduce Tennessee's share of TVA power property and the PILOT unless they are offset by increases in the value of TVA power property from investments in Tennessee or by net reductions in other states. For example, TVA plans to spend as much as \$5 billion to build a new pumped-storage hydroelectric facility near Rorex Creek, Pisgah, Alabama, something that could increase Alabama's share of TVA power property value relative to Tennessee and other states.<sup>42</sup>

---

<sup>38</sup> Email from Stephen Schoolfield, senior program manager-taxes, Tennessee Valley Authority, January 6, 2016.

<sup>39</sup> For discussion of shifts in TVA power property and TVA's investments in recent fiscal years, see emails from Rebecca Jones, Tennessee Valley Authority, December 23, 2021, Betsy Hopson, taxes program manager, Tennessee Valley Authority, January 7, 2022, and Josh Tester, accounting policy and research program manager, Tennessee Valley Authority, December 4, 2023. See also Tennessee Valley Authority "The Future at Bull Run" and 2023a.

<sup>40</sup> Email from Kelly Lopez, program manager, accounting policy and research, Tennessee Valley Authority, December 9, 2024.

<sup>41</sup> Email from Kelly Lopez, program manager, accounting policy and research, Tennessee Valley Authority, December 17, 2025.

<sup>42</sup>Tennessee Valley Authority 2024c, Dassow 2025a.

Shifts involving other types of power property similarly could affect the share of TVA's PILOT that each state and county receives. For example, TVA has announced plans to relocate its power control center from an existing facility in Hamilton County to a new facility to be built in Meigs County. Construction of the new systems operation center began in July 2020; the facility was completed in fiscal year 2024-25 and is expected to be fully operational in calendar year 2026.<sup>43</sup> To the extent that investment in the new facility increases the value of TVA power property in Tennessee relative to other states, it would shift the balance of the PILOT toward Tennessee. Moreover, because a county's direct payments from TVA are based on the power property TVA owns in it, the planned relocation has already resulted in an increase in direct payments to Meigs County. The relocation has not affected TVA's direct payments to Hamilton County because TVA still owns the building in which the current power control center is located.<sup>44</sup>

TVA's 2019 IRP also calls for energy efficiency savings of up to 1,800 megawatts by 2028 and up to 2,200 megawatts by 2038.<sup>45</sup> Some of that improved efficiency will occur through upgrading power transmission and distribution systems; some will occur in private homes and businesses. As customers update their homes, commercial and industrial facilities, and electrical appliances and equipment, those changes reduce existing power demand, which could reduce TVA revenues and ultimately the PILOT for all recipients if the amount of electricity consumed does not continue to grow with the population and the economy.

#### *Incentives in TVA's Long-Term Wholesale Power Contracts*

Changes in TVA's wholesale power contracts with its distributors can affect TVA's gross power revenue and, therefore, the PILOT. In August 2019, TVA approved a long-term contract option that "better aligns the length of [distributor] contracts with TVA's long-term commitments."<sup>46</sup> The contracts include rebates for distributors and flexibility for them to obtain renewable energy from sources other than TVA in exchange for a 20-year termination notice requirement.<sup>47</sup>

---

<sup>43</sup> Chattanooga 2020; and Tennessee Valley Authority 2024b, 2025a, and "System Operations Center."

<sup>44</sup> Emails from Bryan Johnson, senior program manager-taxes, Tennessee Valley Authority, December 13, 2018 and December 2, 2019.

<sup>45</sup> Tennessee Valley Authority 2019c. By way of comparison, TVA's combined-cycle natural gas plant in Ackerman, Mississippi, is capable of producing 705 megawatts of electricity, enough to power more than 400,000 homes. See <https://www.tva.gov/Energy/Our-Power-System/Natural-Gas/Ackerman-Combined-Cycle-Plant>.

<sup>46</sup> Tennessee Valley Authority 2019b.

<sup>47</sup> Tennessee Valley Authority 2019b; and Flessner 2019b.

The rebates in these long-term contracts reduce revenue TVA otherwise would have received, and they reduce TVA's total PILOT because they are credited prior to TVA calculating its gross revenue from power sales.<sup>48</sup> As of September 30, 2025, 148 of TVA's 153 distributors had signed the contracts. The remaining five combined to provide 13.8% of TVA's revenue from sales of electricity to all distributors in federal fiscal year 2023-24. Long-term partnership rebates reduced TVA's gross revenue by \$231 million in federal fiscal year 2024-25.<sup>49</sup> According to commission staff calculations, reducing revenue by \$231 million reduces the total estimated PILOT for federal fiscal year 2025-26 by \$11.6 million and Tennessee's share by approximately \$7.9 million.

The provisions that grant distributors flexibility to obtain renewable energy from sources other than TVA either by generating it themselves or by purchasing it from other entities could also affect payments to Tennessee. To the extent these provisions reduce the amount of power that distributors would otherwise purchase from TVA, they too could reduce TVA power revenue and the PILOT.<sup>50</sup> The effect on Tennessee revenue would depend in part on the cost of wholesale power that distributors purchased from entities other than TVA. While power purchased at wholesale from these entities would be subject to the equivalent payments required under Public Chapter 1035, Acts of 2010, power that a distributor generated itself for sale to its retail customers would not.<sup>51</sup> These payments would be added to those received from TVA and distributed through the state's TVA PILOT distribution formula. However, it is possible for wholesalers responsible for these payments to reduce or even eliminate the amount owed by applying credits for other taxes they pay, including local property taxes and state franchise and excise taxes, as well as gross receipts taxes.<sup>52</sup>

As of January 2026, 16 distributors in Tennessee are currently purchasing power from entities other than TVA.<sup>53</sup> According to Tennessee Department of Revenue staff, the credits claimed have exceeded the payments that would otherwise be owed under Public

---

<sup>48</sup> Telephone interview with Bryan Johnson, senior program manager-taxes, Tennessee Valley Authority, October 15, 2019.

<sup>49</sup> Tennessee Valley Authority 2025a.

<sup>50</sup> Telephone interview with Bryan Johnson, senior program manager-taxes, Tennessee Valley Authority, October 15, 2019.

<sup>51</sup> Email from Christin Lotz, research director, Tennessee Department of Revenue, October 28, 2019.

<sup>52</sup> Public Chapter 1035, Acts of 2010.

<sup>53</sup> Email from Austin Hebbeler, program manager, origination and renewables, Tennessee Valley Authority, January 8, 2026.

Chapter 1035, and as a result, no payments have been required.<sup>54</sup> It is possible that more distributors will begin purchasing power from entities other than TVA in future years. At the end of federal fiscal year 2024-25, 109 distributors had signed flexibility agreements as part of their long-term partnership contracts with TVA, allowing them to obtain power from other sources.<sup>55</sup>

### ***Potential for Changes in TVA’s Customer Base***

Federal law both prohibits TVA from expanding its service area and protects TVA from competitors. Although the prohibition on expansion—called the fence—makes it unlikely that TVA would be able to replace revenue lost if a distributor were to opt out of its contract and obtain power elsewhere, the protection from competition—called the anti-cherry-picking provision—creates potential hurdles for distributors leaving the TVA system.

Distributors can opt out of their contracts with TVA subject to termination notice requirements. Five distributors have contracts with 5-year notice requirements and 148 have 20-year requirements.<sup>56</sup> A handful of distributors have left the TVA system in recent decades,<sup>57</sup> though at least one has since returned.<sup>58</sup> It appears that the prospect of a major distributor leaving the system has diminished at least for the time being.<sup>59</sup>

If any Tennessee distributor were to leave the TVA system, the overall effect on state and local revenue from TVA’s PILOT and the equivalent payments required under the 2010 law would depend in part on the cost of wholesale power purchased from other entities. As discussed previously, power purchased at wholesale from entities other than TVA would be subject to the equivalent payments, but power that a distributor generated itself for sale to its retail customers would not.<sup>60</sup>

For individual local governments in Tennessee, the effect on revenue from TVA’s PILOT and the equivalent payments would vary. Equivalent payments made pursuant to the 2010 law would be added to TVA PILOT revenue and allocated to local governments

---

<sup>54</sup> Email from Rayna Ware, assistant director, financial control, Tennessee Department of Revenue, January 20, 2026.

<sup>55</sup> Tennessee Valley Authority 2025a.

<sup>56</sup> Tennessee Valley Authority 2025a.

<sup>57</sup> Kentucky Municipal Power Agency 2018.

<sup>58</sup> McGee 2008.

<sup>59</sup> Memphis Light, Gas and Water 2019, 2022a, and 2022b; also “Power Supply Alternatives IRP.”

<sup>60</sup> Email from Christin Lotz, research director, Tennessee Department of Revenue, October 28, 2019.

through the state's TVA PILOT distribution formula. But local governments whose distributors leave TVA's service area after March 8, 1990, are excluded from the portion of revenue distributed through the formula based on population, county acreage, or TVA acreage.<sup>61</sup> As a result, revenue distributed to some local governments could increase even if overall revenue decreases because they would receive a larger individual percentage through the formula; however, local governments in the exiting distributor's service area would all see their shares decrease.

### ***The Shift Away from Coal: Environmental and Business Reasons***

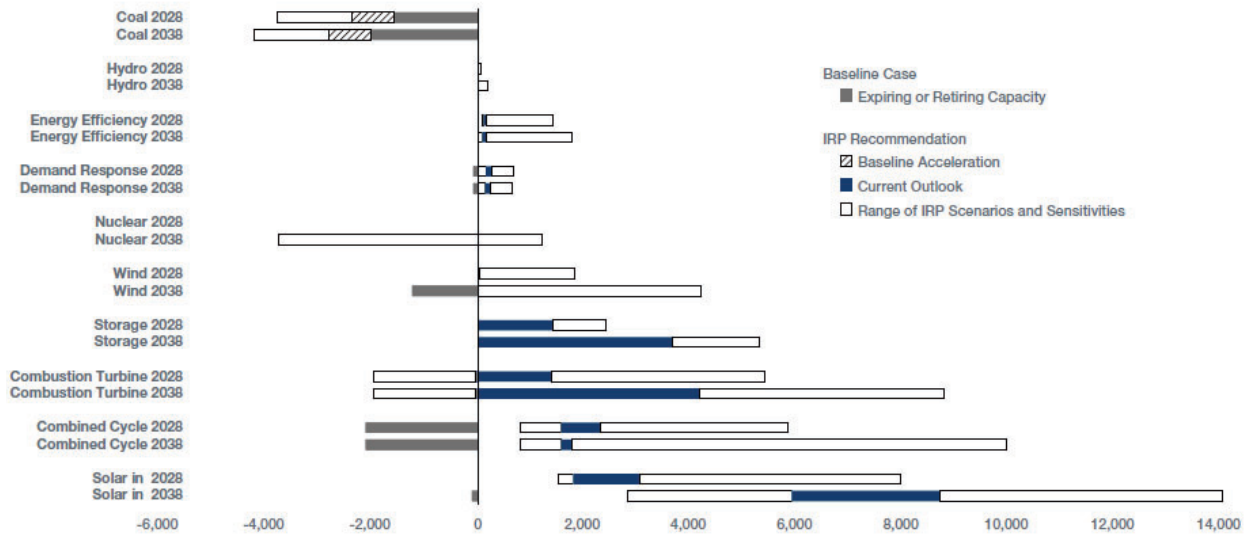
As recently as 2011, coal-fired plants were TVA's largest single source of power,<sup>62</sup> but because of their age and changing air-quality requirements, the Authority is shifting emphasis from coal to other power sources (see figure 3 and appendix G). As its coal-fired power plants age, TVA must either retire them or install costly upgrades to meet new air-quality standards that tighten restrictions on the emission of particulates, sulfur dioxide, nitrogen oxides, mercury, lead, and carbon—the major byproducts of burning coal. The cost of upgrading existing coal-fired facilities, the relative cleanliness of other fuels, and the decreasing cost of natural gas have also resulted in a competitive advantage for other methods of generating electricity.

---

<sup>61</sup> Tennessee Code Annotated, Section 67-4-3101(f); Tennessee Code Annotated, Section 67-9-102(a); and email from Christin Lotz, research director, Tennessee Department of Revenue, October 28, 2019.

<sup>62</sup> Tennessee Valley Authority 2013 shows coal fueled 52% of TVA power generation in federal fiscal year 2011, but 41% in 2012 as natural gas usage more than doubled.

**Figure 3. TVA Recommended Range of Capacity Changes in Megawatts by 2028 and 2038**



Source: Tennessee Valley Authority 2019c.

### Fossil Plant Retirements Required by Environmental Agreements

To resolve a series of legal challenges brought under the Clean Air Act by several states, including Tennessee, and environmental groups, TVA entered into two settlements in April 2011 in which it agreed to retire 18 of its 59 coal-fired units before 2018. All of the affected units were retired prior to January 2018. They included two of four coal-fired units at TVA’s John Sevier plant in Hawkins County, which were replaced by a combined-cycle gas plant on an adjacent site, all 10 coal-fired units at its Johnsonville plant in Humphreys County, and six of eight coal-fired units at its Widows Creek plant in Alabama.<sup>63</sup> See table 2.

<sup>63</sup> Tennessee Valley Authority 2014, 2017, and 2018.

**Table 2. Tennessee Valley Authority Coal-Fired Units Retired Under Environmental Agreements**

Fossil Plant	Units Affected	Existing Scrubbers and SCRs* Prior to Agreements	Requirements Under Environmental Agreements	Retirements Implemented by TVA as a Result of Environmental Agreements
John Sevier	2 of 4	None	<ul style="list-style-type: none"> <li>Retire two units no later than December 31, 2012</li> </ul>	<ul style="list-style-type: none"> <li>Retired Units 1 and 2 on December 31, 2012</li> </ul>
Johnsonville	10 of 10	None	<ul style="list-style-type: none"> <li>Retire six units no later than December 31, 2015</li> <li>Retire four units no later than December 31, 2017</li> </ul>	<ul style="list-style-type: none"> <li>Retired Units 5-10 on December 31, 2015</li> <li>Retired Units 1-4 on December 31, 2017</li> </ul>
Widows Creek	6 of 8	None	<ul style="list-style-type: none"> <li>Retire two of Units 1-6 no later than July 31, 2013</li> <li>Retire two of Units 1-6 no later than July 31, 2014</li> <li>Retire two of Units 1-6 no later than July 31, 2015</li> </ul>	<ul style="list-style-type: none"> <li>Retired Units 3 and 5 on July 31, 2013</li> <li>Retired Units 1, 2, 4, and 6 on July 31, 2014</li> </ul>

\* Selective catalytic reduction systems (“SCR”)

Source: Tennessee Valley Authority 2014, 2017, and 2018.

### **Fossil Plant Retirements for Business Reasons**

Because of the competitive advantage over coal of other methods of generating electricity, TVA has retired 17 additional coal-fired units since 2013 and plans to retire 11 more by the end of 2028. The units retired for business reasons included the two remaining coal-fired units at TVA’s John Sevier plant in Hawkins County and one of the 10 units at its Shawnee plant in Kentucky in 2014, the last two units at its Widows Creek plant in Alabama in 2015, and all five coal-fired units at its Colbert plant in Alabama in 2016. TVA retired two of the three coal-fired units at its Paradise plant in Kentucky in 2017 and all three coal-fired units at the Allen plant in Memphis in 2018 following the completion of new natural gas-fired units at each site. TVA retired the remaining coal-fired unit at Paradise in February 2020 and retired the lone unit at its Bull Run plant in Anderson County in December 2023. It plans to retire both units at its Cumberland plant in Stewart County, one by the end of 2026 and the other by the end of 2028, as well as all nine units at its Kingston plant in Roane County by the end of 2027.<sup>64</sup> See table 3.

---

<sup>64</sup> Tennessee Valley Authority 2014, 2017, 2018, 2019b, 2020, 2024b, “Cumberland Fossil Plant Retirement,” “Kingston Fossil Plant Retirement,” and “The Future at Bull Run.”

**Table 3. Tennessee Valley Authority Coal-Fired Units Retired for Business Reasons**

Fossil Plant	Units Affected	Existing Scrubbers and SCRs* Prior to Agreements	Requirements Under Environmental Agreements	Retirements Implemented or planned by TVA for Business Reasons
Allen	3 of 3	SCRs on all three units	<ul style="list-style-type: none"> <li>Install scrubbers or retire no later than December 31, 2018</li> </ul>	<ul style="list-style-type: none"> <li>Retired Units 1-3 of coal-fired plant on March 31, 2018</li> <li>New gas-fired plant built at site of Allen coal-fired plant began operation on April 30, 2018</li> </ul>
Bull Run	1 of 1	Scrubber and SCRs on unit	<ul style="list-style-type: none"> <li>Continuously operate existing emission control equipment</li> </ul>	<ul style="list-style-type: none"> <li>Retired lone unit on December 1, 2023</li> </ul>
Colbert	5 of 5	SCR on Unit 5	<ul style="list-style-type: none"> <li>Remove from service, control, convert, or retire Units 1-4 no later than June 30, 2016</li> <li>Remove from service, control, or retire Unit 5 no later than December 31, 2015</li> <li>Control or retire removed from service units within three years</li> </ul>	<ul style="list-style-type: none"> <li>Retired Units 1-5 on April 16, 2016</li> </ul>
Cumberland	2 of 2	Scrubbers and SCRs on both units	<ul style="list-style-type: none"> <li>Continuously operate existing emission control equipment</li> </ul>	<ul style="list-style-type: none"> <li>Retire one unit by end of 2026 and the second by end of 2028</li> </ul>
John Sevier	2 of 4	None	<ul style="list-style-type: none"> <li>Remove from service two units no later than December 31, 2012, and control, convert, or retire those units no later than December 31, 2015</li> </ul>	<ul style="list-style-type: none"> <li>Retired Units 3 and 4 on June 25, 2014</li> </ul>
Kingston	9 of 9	Scrubbers and SCRs on all nine units	<ul style="list-style-type: none"> <li>Continuously operate existing emission control equipment</li> </ul>	<ul style="list-style-type: none"> <li>Retire all units by end of 2027</li> </ul>
Paradise	3 of 3	Scrubbers and SCRs on all three units	<ul style="list-style-type: none"> <li>Upgrade scrubbers on Units 1 and 2 no later than December 31, 2012</li> <li>Continuously operate emission control equipment on Units 1-3</li> </ul>	<ul style="list-style-type: none"> <li>New gas-fired plant built at site of Paradise coal-fired plant began operation on April 7, 2017</li> <li>Retired Units 1 and 2 of coal-fired plant on April 15, 2017</li> <li>Retired Unit 3 of coal-fired plant in February 2020</li> </ul>
Shawnee	1 of 10	None	<ul style="list-style-type: none"> <li>Control, convert, or retire Units 1 and 4 no later than December 31, 2017</li> </ul>	<ul style="list-style-type: none"> <li>Retired Unit 10 on June 30, 2014</li> </ul>
Widows Creek	2 of 8	Scrubbers and SCRs on Units 7 and 8	<ul style="list-style-type: none"> <li>Continuously operate existing emissions control equipment on Units 7 and 8</li> </ul>	<ul style="list-style-type: none"> <li>Retired Units 7 and 8 on September 30, 2015</li> </ul>

\* Selective catalytic reduction systems ("SCR")

Source: Tennessee Valley Authority 2014, 2017, 2018, 2019b, 2020, 2024b, "Cumberland Fossil Plant Retirement," "The Future at Bull Run," and "Kingston Fossil Plant Retirement"; and Associated Press 2018.

TVA still has 13 other coal-fired units. But in May 2021, it recommended retiring the remaining units at Gallatin in Sumner County in 2031 and Shawnee in Kentucky in 2033, though it has yet to make a final determination for either facility.<sup>65</sup> TVA previously added pollution control devices to two of the units at Shawnee and all four units at Gallatin rather than retire them—TVA had the option to control or retire these units under the environmental settlements it agreed to in 2011 and has now completed all requirements of these settlements.<sup>66</sup> See table 4.

**Table 4. Tennessee Valley Authority Coal-Fired Units that Continue to be Operated and Other Actions Taken or Planned**

Fossil Plant	Units Affected	Existing Scrubbers and SCRs* Prior to Agreements	Requirements Under Environmental Agreements	Other Actions Taken or Planned
Gallatin	4 of 4	None	<ul style="list-style-type: none"> <li>Control, convert, or retire all four units no later than December 31, 2017</li> </ul>	<ul style="list-style-type: none"> <li>Added scrubbers and SCRs on all four units in 2016</li> <li>Evaluating all units for potential retirement by 2031.</li> </ul>
Shawnee	9 of 10**	None	<ul style="list-style-type: none"> <li>Control, convert, or retire Units 1 and 4 no later than December 31, 2017</li> </ul>	<ul style="list-style-type: none"> <li>Added scrubbers and SCRs on Units 1 and 4 in 2017; SCRs for Units 2, 3, 7 and 8 in progress; remaining units have none</li> <li>Evaluating all units for potential retirement by 2033</li> </ul>

\* Selective catalytic reduction systems (“SCR”)

\*\* Unit 10 at Shawnee was idled in 2010 and retired.

Source: Tennessee Valley Authority 2014, 2017, 2018, 2020, 2021b, “Shawnee Fossil Plant Emissions,” and “Shawnee Fossil Plant.”

Federal regulatory changes announced in 2025 could potentially allow TVA to continue operating its coal-fired units at Gallatin and Shawnee beyond their proposed retirement dates. TVA said in May that it is reevaluating its coal fleet retirement schedule with respect to the current regulatory environment.<sup>67</sup>

### **New Energy Sources to Meet the Region’s Needs**

As TVA retires existing coal-fired units, new energy sources—including natural gas, nuclear, wind, and solar—are being developed to meet the region’s electricity needs. New natural gas-fired units became commercially operational at TVA’s Paradise plant in Kentucky in 2023 and at the Johnsonville plant in 2025, and TVA is in the process of adding new or replacement gas-fired units at other sites.<sup>68</sup> In 2016, TVA submitted an

<sup>65</sup> Tennessee Valley Authority 2021b.

<sup>66</sup> Tennessee Valley Authority 2017 and 2018.

<sup>67</sup> Tennessee Valley Authority 2025c.

<sup>68</sup> Tennessee Valley Authority 2024b.

application with the US Nuclear Regulatory Commission for the future placement of nuclear units known as small modular reactors at a site near Oak Ridge.<sup>69</sup> That “Early Site Permit” was approved in 2019.<sup>70</sup> The permit is valid through 2039, which TVA says provides it with “a great deal of flexibility to make new nuclear decisions based on energy needs and economic factors.”<sup>71</sup> After evaluating “a variety of alternatives for a proposed advanced nuclear technology park at the Clinch River nuclear (CRN) site,”<sup>72</sup> TVA announced in September 2022 that it had chosen its preferred alternative, clearing the way for site preparation and other steps necessary “to support TVA’s goal of demonstrating the feasibility of deploying advanced nuclear reactor technologies at the CRN Site.”<sup>73</sup> As of August 2025, TVA had approved a total of \$350 million in funding for designing and developing small modular reactors at the site.<sup>74</sup>

TVA has contracts to purchase electricity from seven operating wind farms, with a total contract capacity of 920 megawatts. It owns nine operating solar installations that account for approximately one megawatt of capacity. It also has 15 power purchase contracts with solar providers operating in Tennessee, Alabama, Kentucky and Mississippi that total 1,438 megawatts of capacity.<sup>75</sup>

Several of these solar agreements have been made using TVA’s latest utility-scale program for renewable energy development, called “Green Invest.” To qualify for federal tax incentives for solar generation, these projects are built by private solar companies that sell the power generated to TVA for distribution to participants in the Green Invest program and other customers.<sup>76</sup> The program has no effect on TVA’s PILOT because the power is sold through TVA and counts toward TVA’s wholesale power revenue and because the properties are not owned by TVA.

---

<sup>69</sup> Tennessee Valley Authority 2016.

<sup>70</sup> Flessner 2019a.

<sup>71</sup> Tennessee Valley Authority 2020.

<sup>72</sup> Tennessee Valley Authority 2021a.

<sup>73</sup> Tennessee Valley Authority 2022.

<sup>74</sup> Tennessee Valley Authority 2025a.

<sup>75</sup> Tennessee Valley Authority 2025a.

<sup>76</sup> Flessner 2020.

## References

- Associated Press. 2018. "TVA's New Gas Plant in Tennessee Ready to Run." *Chattanooga Times Free Press*, May 1. <https://www.timesfreepress.com/news/breakingnews/story/2018/may/01/tvas-new-gas-plant-tennessee-ready-run/469660/>.
- Chattanooga. 2020. "Construction of New TVA Operations Center In Georgetown Begins In July." Chattanooga.com, June 30. <https://www.chattanooga.com/2020/6/30/411301/Construction-Of-New-TVA-Operations.aspx>.
- Collins, Michael. 2018. "Alexander Calls Proposal to Sell TVA Assets 'Loony Idea.'" *Knoxville News Sentinel*, February 13. <https://www.knoxnews.com/story/news/2018/02/12/trump-eyes-sale-tennessee-valley-authority/329682002/>.
- Dassow, Daniel. 2025a. "TVA Chooses Alabama Site for New Pumped Storage." *Chattanooga Times Free Press*, June 6. <https://www.timesfreepress.com/news/2025/jun/06/tva-chooses-alabama-site-for-new-pumped-storage/>.
- . 2025b. "TVA: System is stable amid bitter cold and may set a new power usage record this morning." *Knoxville News Sentinel*, January 22. <https://www.knoxnews.com/story/news/environment/2025/01/21/tva-kub-ask-residents-reduce-power-use-knoxville-temperatures-drop/77854810007/>.
- Eggers, Caroline. 2022. "TVA bet on gas for Arctic storms. It backfired." WPLN.org, December 29. <https://wpln.org/post/tva-bet-on-gas-for-arctic-storms-it-backfired/>.
- Flessner, Dave. 2014. "'Arctic Blast' Pushes TVA Power Use to All-Time High." *Chattanooga Times Free Press*, January 8. <http://www.timesfreepress.com/news/business/aroundregion/story/2014/jan/08/arctic-blast-pushes-tva-power-use-all-time-high/128523/>.
- . 2019a. "Federal Regulators Approve Early Site Permit for Small TVA Reactor in Oak Ridge, Tennessee." *Chattanooga Times Free Press*, December 17. <https://www.timesfreepress.com/news/business/aroundregion/story/2019/dec/17/early-site-permit-issued-small-tva-reactor-oak-ridge/510825/>.

- . 2019b. “TVA Offers Rebates to Local Power Companies that Sign Long-Term Contracts with TVA.” *Chattanooga Times Free Press*, August 22.  
<https://www.timesfreepress.com/news/breakingnews/story/2019/aug/22/tva-cut-wholesale-rates-local-power-companies-sign-20-year-contracts/501821/>.
- . 2020. “Tennessee solar farm to power Google data centers through TVA Green Invest program.” *Chattanooga Times Free Press*, November 14.  
<https://www.timesfreepress.com/news/business/aroundregion/story/2020/nov/14/solar-farm-power-google-data-centers-through-tva/536005/>.
- Hardiman, Samuel. 2022. “Tennessee Valley Authority CEO: Federal agency ‘fell short’ during cold; blackouts preserved system.” *Memphis Commercial Appeal*, December 24.  
<https://www.commercialappeal.com/story/news/local/2022/12/24/tva-ceo-jeff-lyash-said-agency-fell-short-during-tennessee-memphis-blackouts/69755331007/>.
- Kentucky Municipal Power Agency. 2018. “About KMPA.” Accessed November 20, 2019. <https://www.kmpa.us/about/>.
- McGee, David. 2008. “Switch Back to TVA for BVU Leaves Some in Cold.” *Bristol Herald Courier*, January 3. [https://www.heraldcourier.com/news/switch-back-to-tva-for-bvu-leaves-some-in-cold/article\\_38d8a427-63c8-50c3-b4ab-b1255b5d69d0.html](https://www.heraldcourier.com/news/switch-back-to-tva-for-bvu-leaves-some-in-cold/article_38d8a427-63c8-50c3-b4ab-b1255b5d69d0.html).
- Memphis Light, Gas and Water. 2019. “MLGW’s first Power Supply Advisory Team (PSAT) meeting set for Tuesday, April 30.” News release, April 29.  
[https://www.mlgw.com/news/news\\_powersupplyapril29](https://www.mlgw.com/news/news_powersupplyapril29).
- . 2022a. “MLGW recommends award of a 20-year contract to TVA.” News release, September 1. [https://www.mlgw.com/news/news\\_sept12022psa](https://www.mlgw.com/news/news_sept12022psa).
- . 2022b. “MLGW Board unanimously rejects 20-year contract with TVA” News release, December 7. [https://www.mlgw.com/news/news\\_dec2022TVA](https://www.mlgw.com/news/news_dec2022TVA).
- . “Power Supply Alternatives IRP.” Accessed January 6, 2023.  
<https://www.mlgw.com/about/PowerSupplyAlternativesIRP#processtimelines>.
- Schoolfield, Stephen. 2017. “TACIR Commission—TVA’s PILOT.” Presentation at TACIR meeting, December 14.  
[https://www.tn.gov/content/dam/tn/tacir/commission-meetings/2017-december/2017December\\_Tab6Stephen%20Schoolfield\\_TVA\\_PILOTs%20Presentation.pdf](https://www.tn.gov/content/dam/tn/tacir/commission-meetings/2017-december/2017December_Tab6Stephen%20Schoolfield_TVA_PILOTs%20Presentation.pdf).

- Sher, Andy. 2018. "Alexander, Corker Urge Trump to Pull Plug on Plan to Sell TVA Electric Transmission Lines." *Chattanooga Times Free Press*, June 21.  
<https://www.timesfreepress.com/news/breakingnews/story/2018/jun/21/tennesse-e-senators-urge-trump-abandon-effort-sell-tva-transmission-assets/473576/>.
- Tennessee Advisory Commission on Intergovernmental Relations. 2010. *The Electric Generation and Transmission Cooperative Act of 2009 and Its Possible Impact on the Tennessee Valley Authority's Payments in Lieu of Taxes*.  
[https://www.tn.gov/content/dam/tn/tacir/documents/electric\\_generation\\_cooperative\\_act.pdf](https://www.tn.gov/content/dam/tn/tacir/documents/electric_generation_cooperative_act.pdf).
- Tennessee Valley Authority. 2009. *Form 10-Q for the Quarterly Period Ended June 30, 2009*.  
<https://d18rn0p25nwr6d.cloudfront.net/CIK-0001376986/1e13a6ed-1273-42ea-8f8b-45586e84e60c.pdf>.
- . 2011. *Environmental Impact Statement for TVA's Integrated Resource Plan: TVA's Environmental & Energy Future, Volume 1*.  
<https://www.nrc.gov/docs/ML1219/ML12199A403.pdf>.
- . 2013. *Form 10-K. Annual report for the fiscal year ended September 30, 2013*.  
<https://tva.q4ir.com/financial-information/sec-filings/sec-filings-details/default.aspx?FilingId=9617717>.
- . 2014. *Form 10-K. Annual report for the fiscal year ended September 30, 2014*.  
<https://tva.q4ir.com/financial-information/sec-filings/sec-filings-details/default.aspx?FilingId=10309007>.
- . 2015. "TVA Completes Purchase of Mississippi Natural Gas Plant." News release, April 14. <https://www.tva.gov/Newsroom/Press-Releases/TVA-Completes-Purchase-of-Mississippi-Natural-Gas-Plant>.
- . 2016. "TVA Submits Early Site Permit Application for Clinch River SMRs." News release, May 13. <https://www.tva.gov/Newsroom/Press-Releases/TVA-Submits-Early-Site-Permit-Application-For-Clinch-River-SMRs>.
- . 2017. *Form 10-K. Annual report for the fiscal year ended September 30, 2017*.  
<https://tva.q4ir.com/financial-information/sec-filings/sec-filings-details/default.aspx?FilingId=12384287>.
- . 2018. *Form 10-K. Annual report for the fiscal year ended September 30, 2018*.  
<https://tva.q4ir.com/financial-information/sec-filings/sec-filings-details/default.aspx?FilingId=13065482>.

- . 2019a. *FY 2020 Budget Proposal and Management Agenda and FY 2018 Performance Report*. March 18. [https://tva-azr-eastus-cdn-ep-tvawcm-prd.azureedge.net/cdn-tvawcma/docs/default-source/default-document-library/about-tva/guidelines-reports/fy2020-budget-proposal-management-agenda-and-fy2018-performance-report.pdf?sfvrsn=2e6536bb\\_2](https://tva-azr-eastus-cdn-ep-tvawcm-prd.azureedge.net/cdn-tvawcma/docs/default-source/default-document-library/about-tva/guidelines-reports/fy2020-budget-proposal-management-agenda-and-fy2018-performance-report.pdf?sfvrsn=2e6536bb_2).
- . 2019b. *Form 10-K. Annual report for the fiscal year ended September 30, 2019*. <https://tva.q4ir.com/financial-information/sec-filings/sec-filings-details/default.aspx?FilingId=13745275>.
- . 2019c. *Integrated Resource Plan*. [https://tva-azr-eastus-cdn-ep-tvawcm-prd.azureedge.net/cdn-tvawcma/docs/default-source/default-document-library/site-content/environment/environmental-stewardship/irp/2019-documents/tva-2019-integrated-resource-plan-volume-i-final-resource-plan.pdf?sfvrsn=44251e0a\\_4](https://tva-azr-eastus-cdn-ep-tvawcm-prd.azureedge.net/cdn-tvawcma/docs/default-source/default-document-library/site-content/environment/environmental-stewardship/irp/2019-documents/tva-2019-integrated-resource-plan-volume-i-final-resource-plan.pdf?sfvrsn=44251e0a_4).
- . 2019d. “TVA Releases Final Integrated Resource Plan.” News release, June 28. <https://www.tva.com/newsroom/press-releases/tva-releases-final-integrated-resource-plan>.
- . 2020. *Form 10-K. Annual report for the fiscal year ended September 30, 2020*. <https://tva.q4ir.com/financial-information/sec-filings/sec-filings-details/default.aspx?FilingId=14507892>.
- . 2021a. *Form 10-K. Annual report for the fiscal year ended September 30, 2021*. <https://tva.q4ir.com/financial-information/sec-filings/sec-filings-details/default.aspx?FilingId=15351681>.
- . 2021b. *Aging Coal Fleet Evaluation*. [https://tva-azr-eastus-cdn-ep-tvawcm-prd.azureedge.net/cdn-tvawcma/docs/default-source/environment/aging-coal-fleet-evaluation2eeb5bd7-1983-4d03-ac5b-c105e2686d07.pdf?sfvrsn=3425c191\\_3](https://tva-azr-eastus-cdn-ep-tvawcm-prd.azureedge.net/cdn-tvawcma/docs/default-source/environment/aging-coal-fleet-evaluation2eeb5bd7-1983-4d03-ac5b-c105e2686d07.pdf?sfvrsn=3425c191_3).
- . 2022. *Clinch River Nuclear Site Advanced Nuclear Reactor Technology Park Final Programmatic Environmental Impact Statement*. Record of Decision, September 29. [https://tva-azr-eastus-cdn-ep-tvawcm-prd.azureedge.net/cdn-tvawcma/docs/default-source/environment/crn-rod-september-20229b927489-131d-494a-82c9-0bba70192096.pdf?sfvrsn=e1be05c6\\_3](https://tva-azr-eastus-cdn-ep-tvawcm-prd.azureedge.net/cdn-tvawcma/docs/default-source/environment/crn-rod-september-20229b927489-131d-494a-82c9-0bba70192096.pdf?sfvrsn=e1be05c6_3).
- . 2023a. *Form 10-K. Annual report for the fiscal year ended September 30, 2023*. <https://d18rn0p25nwr6d.cloudfront.net/CIK-0001376986/b1d84fa0-fedc-4285-a4c7-cddd3b623ec0.pdf>.

- . 2023b. *FY 2024 Budget Proposal and Management Agenda and FY 2023 Annual Performance Report*. [https://tva-azr-eastus-cdn-ep-tvawcm-prd.azureedge.net/cdn-tvawcma/docs/default-source/about-tva/guidelines-reports/fy-2023-annual-budget-and-performance-report-final.pdf?sfvrsn=d896bbfb\\_3](https://tva-azr-eastus-cdn-ep-tvawcm-prd.azureedge.net/cdn-tvawcma/docs/default-source/about-tva/guidelines-reports/fy-2023-annual-budget-and-performance-report-final.pdf?sfvrsn=d896bbfb_3).
- . 2023c. *Integrated Resource Plan and Environmental Impact Statement*. Notice of Intent, May 19. *Federal Register* Vol. 88, No. 97. [https://tva-azr-eastus-cdn-ep-tvawcm-prd.azureedge.net/cdn-tvawcma/docs/default-source/environment/environmental-stewardship/integrated-resource-plan/2024/irp-noi-5.19.2023.pdf?sfvrsn=38fd2bdb\\_1](https://tva-azr-eastus-cdn-ep-tvawcm-prd.azureedge.net/cdn-tvawcma/docs/default-source/environment/environmental-stewardship/integrated-resource-plan/2024/irp-noi-5.19.2023.pdf?sfvrsn=38fd2bdb_1).
- . 2024a. *Form 8-k. Current report October 2, 2024*. <https://d18rn0p25nwr6d.cloudfront.net/CIK-0001376986/d3e0be4f-1671-4ea6-b972-72c22954e1e4.pdf>.
- . 2024b. *Form 10-K. Annual report for the fiscal year ended September 30, 2024*. <https://d18rn0p25nwr6d.cloudfront.net/CIK-0001376986/326e734f-0a39-410a-b7d9-d70c412c83c6.pdf>.
- . 2024c. “TVA Board Approves Additional \$150 Million in Advanced Nuclear Funding.” News release, August 22. <https://www.tva.com/news-media/releases/tva-board-approves-additional--150-million-in-advanced-nuclear-funding>.
- . 2025a. *Form 10-K. Annual report for the fiscal year ended September 30, 2025*. <https://d18rn0p25nwr6d.cloudfront.net/CIK-0001376986/0ad482d5-dee1-4cce-953e-32997eb607e8.pdf>.
- . 2025b. *FY 2026 Budget Details & Management Agenda and FY 2024 Annual Performance Report*. [https://tva-azr-eastus-cdn-ep-tvawcm-prd.azureedge.net/cdn-tvawcma/docs/default-source/about-tva/guidelines-reports/annual-performance-report-2026.pdf?sfvrsn=67776920\\_1](https://tva-azr-eastus-cdn-ep-tvawcm-prd.azureedge.net/cdn-tvawcma/docs/default-source/about-tva/guidelines-reports/annual-performance-report-2026.pdf?sfvrsn=67776920_1).
- . 2025c. *Q2 Fiscal Year 2025 Investor Media Call*. [https://s205.q4cdn.com/318912997/files/doc\\_financials/2025/q2/Tennessee-Valley-Authority-050125-Transcript.pdf](https://s205.q4cdn.com/318912997/files/doc_financials/2025/q2/Tennessee-Valley-Authority-050125-Transcript.pdf).
- . “Cumberland Fossil Plant Retirement.” Accessed January 12, 2023. <https://www.tva.com/environment/environmental-stewardship/environmental-reviews/nepa-detail/cumberland-fossil-plant-retirement>.

- . “The Future at Bull Run.” Accessed December 13, 2023. <https://www.tva.com/newsroom/articles/the-future-at-bull-run>.
  - . “2025 Integrated Resource Plan.” Accessed January 9, 2025. <https://www.tva.com/environment/integrated-resource-plan>.
  - . “Kingston Fossil Plant Retirement.” Accessed January 6, 2023. <https://www.tva.com/environment/environmental-stewardship/environmental-reviews/nepa-detail/kingston-fossil-plant-retirement>.
  - . “Shawnee Fossil Plant.” Accessed December 14, 2023. <https://www.tva.com/energy/our-power-system/coal/shawnee-fossil-plant>.
  - . “Shawnee Fossil Plant Emissions.” Accessed December 30, 2020. <https://www.tva.com/environment/environmental-stewardship/air-quality/air-quality-standards/shawnee-fossil-plant-emissions>.
  - . “System Operations Center.” Accessed December 28, 2021. <https://www.tva.com/energy-system-of-the-future/system-operations-center>.
  - . “2019 Integrated Resource Plan.” Accessed January 8, 2020. <https://www.tva.gov/Environment/Environmental-Stewardship/Integrated-Resource-Plan>.
- Timms, Mariah, and Adam Friedman. 2022. “What we know: TVA ordered rolling blackouts for the first time in 90 years amid freezing temps.” *Tennessean*, December 24. <https://www.tennessean.com/story/news/local/2022/12/23/why-tennessee-valley-authority-ordered-rolling-blackouts-in-nashville/69754538007/>.
- US Department of Labor, Bureau of Labor Statistics. “PPI Commodity Data for Fuels and Related Products and Power: Electric Power.” *Databases, Tables & Calculators by Subject*. Accessed December 12, 2022. <https://www.bls.gov/ppi/data.htm>.
- US General Accounting Office. 2003. *Tennessee Valley Authority: Information on Lease-Leaseback and Other Financing Arrangements*. GAO-03-784, June. Accessed January 14, 2021. <https://www.gao.gov/assets/240/238729.pdf>.

# Appendix A: TVA's Allocation Formula

## Section 13 - In Lieu of Tax Payments Overview

### Overview:

Section 13 of the TVA Act requires TVA to pay 'tax equivalent payments' to states in which its power operations are carried out and to counties in which it has acquired reservoir land, allocable to power purposes, or power properties that were formerly subject to local ad valorem taxation. Power operations are determined to be carried out if TVA has power sales and/or holds power property in a given state.

### Calculation:

The total tax equivalent payments to be paid to the states and counties is determined by taking 5 percent of gross proceeds from the sale of power, from the prior fiscal year, (excluding sales to federal agencies, off-system sales, and interdivisional sales). The resulting amount is essentially the "bucket" of tax equivalent payments that are to be distributed to the states and counties which TVA carries out its power operations. Currently, the eight states in which TVA carries out its power operations are: Alabama, Georgia, Illinois, Kentucky, Mississippi, North Carolina, Tennessee, and Virginia. The percentage amount to be allocated to each state is determined by a two-part calculation; **1.)** 50 percent is based on the ratio of TVA power property within the respective state, compared to TVA's total net book value of power properties for the prior fiscal year, and **2.)** 50 percent is based on the ratio of power sales within the respective state, compared to TVA's total power sales for the prior fiscal year. The two percentages, calculated above, are then averaged and the resulting percentage is multiplied by the total "bucket" of tax equivalent payments to be distributed, and the resulting dollar amount represents the payments to be distributed to the respective state during TVA's fiscal year.

#### *Direct Payments to counties:*

The TVA Act also requires TVA to directly make payments to counties in which TVA has acquired/purchased reservoir land, allocable to power purposes, or power property from a privately owned and operated utility company. (E.g. TVA purchases a power plant from Southern Company in order to serve a given load in the TVA service territory. Whereas Southern Company has historically paid property taxes to the county in which this power property is located, TVA is not subject to taxation and therefore the county cannot levy property taxes for this power property. However, in an effort to keep the county whole, the TVA Act requires TVA to make payments "in-lieu" of taxes to the county.) The amount to be paid to the county is determined by taking the average of the prior two years property tax bills and the resulting amount is paid, annually, to the county for as long as TVA owns the property. In addition, any direct payments to a county reduce the amount paid directly to the state by TVA. While this reduces the total amount paid directly to the state, it doesn't change the overall tax equivalent payments that the state is due, determined above.

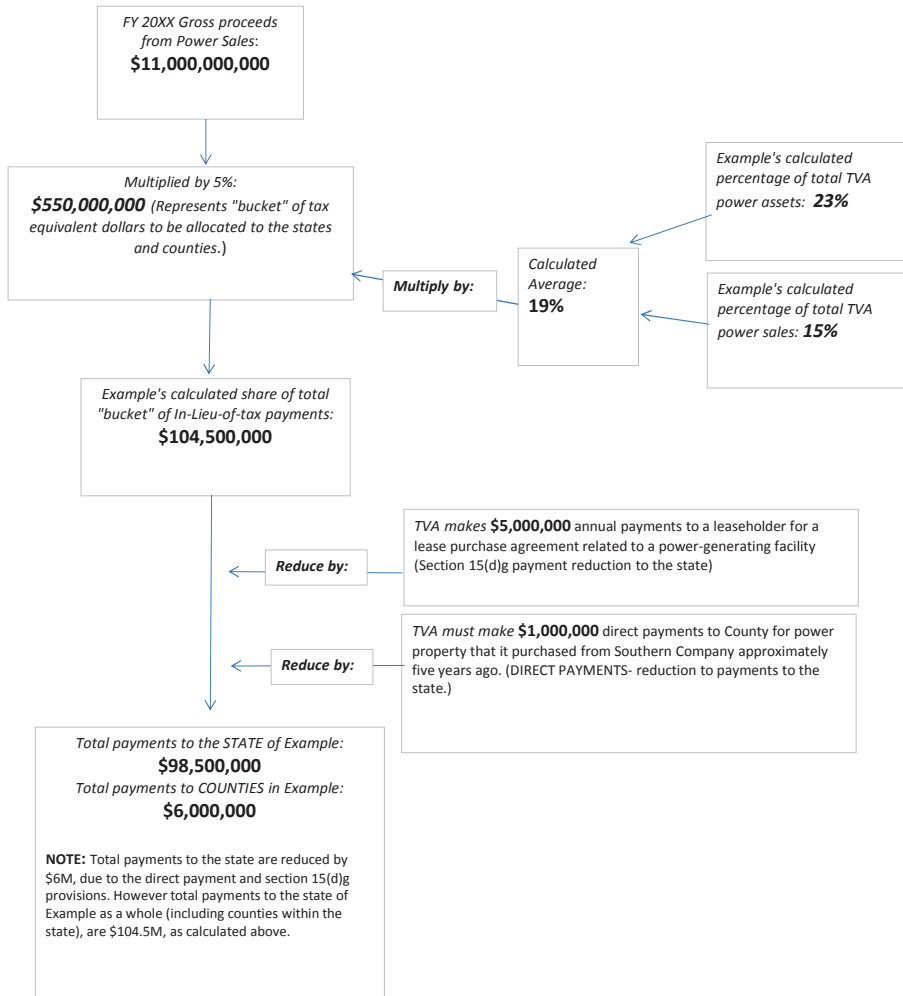
#### *Section 15(d)g of the TVA Act:*

This section recognizes that generating facilities operated by TVA under lease or lease purchase agreements constitute power property held by TVA within the meaning of Section 13. As such, any property taxes reimbursed by TVA to the leaseholder, as a result of the negotiated lease agreement, will reduce the overall amount owed to the state by TVA. This section essentially prevents a "double-dipping" on the tax payments to the county/state since TVA has already reimbursed the leaseholder for the property taxes.

### Additional Facts:

- The TVA Board, each November, approves the estimated (based on unaudited financial numbers) payments, for the current fiscal year, to be paid during the months of October through August.
- In addition, the Board approves the "final" payment for September of the prior fiscal year which is based off audited financial data.
- Each state redistributes the tax equivalent payments to the counties based upon each state's individual legislation.
- Once TVA has remitted the tax equivalent payments to the individual states it has no authority to dictate how the monies are redistributed.

**Example: State of Example's Tax Equivalent Payments for  
FY20XX**



NOTE: Amounts above are for illustrative purposes only and do NOT represent actual amounts for a specific fiscal year.

## **Appendix B: Tennessee's Allocation Formula**

The TVA Act of 1933 (TVA Act) specifically directs that 5% of the Authority's "gross proceeds" be paid as payments in lieu of taxes (PILOTs) to states and local governments where the authority owns and operates property. (48 Stat. 58-59, 16 USC. § 831.) TVA interprets "gross proceeds" as their operating revenues from the sale of power to municipalities, cooperatives, and industries. The TVA Act specifically excludes sales to federal agencies from the PILOT calculation. Payments to each state are based on the amount of TVA-owned property and sales in each state. Tennessee's share based on those two factors has been more than 60% of the total each year since federal fiscal year 2010-11.

Each state determines its own method of distributing the payments. The following chart shows the formula used by the State of Tennessee in distributing the funds among the state government, its agencies, counties, and cities.

**Tennessee Valley Authority (Tennessee State Revenue Sharing Act)**  
***Title 67, Chapter 9, Part 1***

**From the Allocation of TVA Payments in Lieu of Taxes to Tennessee**  
**(after direct payments to counties and 1977-78 base payment to state, counties, and cities)**

	<b>Basis of Apportionment</b> <i>(§ 67-9-101)</i>	<b>Proration to Counties &amp; Municipalities</b> <i>(§ 67-9-102)</i>
Paid to areas with TVA construction <i>(remainder allocated to CTAS, TACIR, and Tennessee Central Economic Authority)</i>	3%	
Retained by the State	48.5%	
Paid to Local Governments	48.5%	
<i>Counties—70% of Local Share</i> <ul style="list-style-type: none"> <li>• <i>Based on Percent of State Population</i></li> <li>• <i>Based on Percent of State Land</i></li> <li>• <i>Based on County's Percent of TVA Acreage in Tennessee</i></li> </ul>		30% <i>(14.55% of total)</i>  30% <i>(14.55% of total)</i>  10% <i>(4.85% of total)</i>
<i>Municipalities—30% of Local Share Based on Percent of State Population</i>		30% <i>(14.55% of total)</i>
<b>Total Allocated by State</b>	<b>100%</b>	

## Appendix C: Distribution of Counties' Share of TVA Payments in Lieu of Taxes to Tennessee by Tennessee Fiscal Year

County	2025-26	2024-25	2023-24	2022-23	2021-22	2020-21	2019-20	2018-19
Anderson	\$1,410,938	\$1,265,292	\$1,296,339	\$1,274,140	\$1,116,491	\$1,161,579	\$1,240,594	\$1,209,200
Bedford	1,041,939	927,026	948,223	930,421	804,007	810,094	871,080	853,927
Benton	2,180,755	1,965,359	1,980,804	1,945,237	1,692,600	1,731,788	1,856,422	1,822,570
Bledsoe	656,599	587,244	595,252	584,085	504,778	507,635	545,815	525,639
Blount	1,886,499	1,673,648	1,726,027	1,694,217	1,468,371	1,483,920	1,593,273	1,538,002
Bradley	1,379,271	1,220,336	1,261,808	1,238,263	1,071,060	1,083,356	1,164,376	1,121,118
Campbell	1,653,714	1,482,225	1,502,785	1,475,216	1,279,413	1,330,786	1,428,757	1,392,427
Cannon	476,571	426,564	433,504	425,555	369,106	378,197	405,909	391,265
Carroll	1,010,038	901,522	915,638	898,305	775,217	804,059	865,172	832,797
Carter	1,048,658	933,012	956,147	938,388	812,270	863,123	927,466	879,608
Cheatham	726,737	644,932	661,670	649,144	560,192	578,715	614,263	591,333
Chester	514,620	458,813	466,916	458,077	395,306	409,882	441,037	424,574
Claiborne	1,192,336	1,067,668	1,083,696	1,063,756	922,133	955,457	1,025,956	1,005,159
Clay	357,482	319,522	323,725	317,596	274,076	284,598	306,230	294,798
Cocke	942,681	846,889	862,733	847,732	741,201	769,632	822,801	795,345
Coffee	1,269,598	1,129,581	1,154,381	1,132,592	977,851	991,625	1,066,873	1,027,328
Crockett	457,825	408,456	415,180	407,321	351,512	369,375	397,448	382,618
Cumberland	1,373,912	1,222,298	1,248,669	1,225,041	1,057,255	1,074,162	1,155,766	1,112,664
Davidson	6,229,997	5,468,302	5,727,695	5,620,252	4,857,256	4,733,171	5,088,979	4,900,954
Decatur	804,942	725,651	733,068	720,138	628,311	646,256	691,692	658,650
DeKalb	538,065	479,370	488,464	479,219	413,561	422,309	454,404	438,393
Dickson	1,067,325	948,441	971,097	952,746	822,427	834,653	897,964	864,514
Dyer	969,144	863,300	879,882	863,226	744,941	787,458	847,311	815,685
Fayette	1,253,022	1,117,181	1,136,836	1,115,315	962,483	977,492	1,051,342	1,011,838
Fentress	798,622	713,538	723,424	709,728	612,474	629,153	676,975	651,704
Franklin	1,604,042	1,439,576	1,460,877	1,434,583	1,247,840	1,279,143	1,371,158	1,183,321
Gibson	1,181,733	1,051,668	1,073,682	1,053,356	909,018	946,514	1,018,457	980,440
Giles	1,043,521	931,827	946,690	928,879	802,396	826,366	888,733	855,804
Grainger	1,251,897	1,128,140	1,141,485	1,121,453	979,171	1,001,043	1,071,128	1,036,650

County	2025-26	2024-25	2023-24	2022-23	2021-22	2020-21	2019-20	2018-19
Greene	1,407,566	1,252,163	1,281,516	1,257,504	1,086,979	1,134,096	1,219,325	1,172,530
Grundy	583,980	522,186	529,396	519,453	448,839	464,716	499,725	481,224
Hamblen	1,127,549	1,004,878	1,030,888	1,012,173	879,257	915,171	981,718	946,369
Hamilton	4,418,263	3,911,331	4,049,750	3,975,183	3,445,621	3,502,196	3,760,660	3,658,020
Hancock	345,280	308,740	312,588	306,671	264,624	273,673	294,472	283,481
Hardeman	1,079,996	964,852	978,366	959,845	828,317	867,772	933,732	899,025
Hardin	1,381,589	1,239,964	1,255,200	1,232,284	1,069,533	1,095,765	1,175,850	1,146,888
Hawkins	1,581,361	1,428,186	1,453,265	1,429,246	1,258,661	1,308,016	1,393,622	1,356,948
Haywood	858,962	765,707	775,680	761,003	656,774	683,490	735,421	707,991
Henderson	1,092,716	976,278	990,598	971,920	839,275	867,765	933,604	893,489
Henry	2,199,303	1,976,522	1,997,392	1,961,052	1,702,936	1,748,274	1,875,847	1,777,904
Hickman	1,013,792	907,279	920,206	903,111	781,709	806,363	866,351	834,577
Houston	531,834	477,740	482,950	474,141	411,582	423,568	454,519	440,770
Humphreys	1,982,573	1,788,611	1,803,974	1,772,085	1,545,581	1,576,576	1,687,868	1,648,788
Jackson	495,282	442,488	448,666	440,173	379,856	392,603	422,445	406,675
Jefferson	1,261,289	1,141,123	1,163,962	1,145,397	1,013,551	1,035,256	1,100,173	1,055,684
Johnson	626,194	561,947	570,650	560,417	487,742	507,043	543,332	521,881
Knox	4,598,207	4,052,944	4,228,172	4,150,333	3,597,658	3,605,000	3,870,233	3,735,811
Lake	277,028	247,407	251,025	246,084	212,363	225,180	242,296	233,251
Lauderdale	818,855	730,521	742,631	728,577	628,816	670,631	721,589	694,284
Lawrence	1,157,850	1,030,214	1,050,064	1,030,241	889,474	912,944	982,111	945,560
Lewis	471,703	421,481	427,834	419,796	362,716	372,714	400,798	385,957
Lincoln	1,030,818	919,533	935,920	918,314	793,288	812,383	873,683	841,293
Loudon	1,405,206	1,278,996	1,302,194	1,282,623	1,143,625	1,145,913	1,212,826	1,189,182
Macon	599,169	533,285	544,324	534,019	460,842	462,467	497,620	479,044
Madison	1,504,776	1,333,070	1,372,120	1,346,176	1,161,940	1,231,304	1,324,771	1,275,651
Marion	1,510,457	1,364,964	1,381,014	1,357,504	1,190,531	1,219,655	1,302,034	1,242,589
Marshall	769,965	685,909	700,659	687,571	594,632	598,395	643,170	619,527
Maury	1,615,872	1,433,543	1,473,778	1,446,119	1,249,707	1,192,117	1,281,766	1,249,817
McMinn	1,117,675	1,001,529	1,023,730	1,005,806	878,514	914,021	977,685	944,436
McNairy	940,402	839,473	852,421	836,284	721,688	749,089	806,027	775,931
Meigs	1,001,878	902,923	911,716	895,529	780,553	792,830	849,100	833,143
Monroe	2,023,644	1,828,302	1,852,189	1,820,833	1,597,764	1,634,647	1,743,996	1,679,319
Montgomery	2,407,117	2,121,091	2,203,358	2,161,669	1,865,619	1,699,016	1,828,069	1,759,965

County	2025-26	2024-25	2023-24	2022-23	2021-22	2020-21	2019-20	2018-19
Moore	291,792	261,209	264,691	259,813	225,170	231,641	248,748	216,533
Morgan	855,159	764,198	775,160	760,554	656,830	685,407	737,230	709,774
Obion	962,274	858,235	872,842	856,322	739,005	774,607	833,471	802,361
Overton	744,159	663,923	674,821	662,046	571,326	590,181	635,041	611,335
Perry	861,840	775,725	782,521	768,369	667,854	679,910	729,051	703,299
Pickett	248,017	221,727	224,561	220,310	190,121	196,494	211,430	203,537
Polk	995,370	907,272	917,012	902,784	801,740	817,050	866,641	832,290
Putnam	1,141,867	1,010,636	1,041,824	1,022,115	882,155	890,097	957,698	921,975
Rhea	1,462,752	1,319,885	1,337,063	1,314,096	1,150,972	1,178,824	1,259,320	1,219,463
Roane	1,936,213	1,750,196	1,775,865	1,746,223	1,535,689	1,591,843	1,697,315	1,687,870
Robertson	1,189,282	1,054,502	1,083,673	1,063,177	917,629	929,055	999,490	962,217
Rutherford	3,454,571	3,041,878	3,168,016	3,108,581	2,686,117	2,391,830	2,571,699	2,476,705
Scott	864,077	771,686	782,971	768,149	662,889	688,257	740,572	712,926
Sequatchie	481,612	430,379	437,789	429,672	372,029	375,261	403,100	388,389
Sevier	1,630,305	1,447,179	1,486,648	1,458,783	1,260,902	1,278,590	1,374,699	1,323,002
Shelby	8,400,714	7,393,410	7,731,174	7,588,617	6,576,268	7,172,587	7,702,525	7,422,378
Smith	611,963	548,345	557,625	547,551	476,017	489,395	524,664	510,067
Stewart	3,621,809	3,267,897	3,289,427	3,230,634	2,813,009	2,861,905	3,066,904	2,946,487
Sullivan	2,168,413	1,923,486	1,984,449	1,947,907	1,688,392	1,792,441	1,924,751	1,891,853
Sumner	2,298,902	2,029,643	2,103,707	2,064,160	1,783,315	1,682,567	1,809,384	1,739,358
Tipton	1,068,807	948,498	973,290	954,885	824,179	871,659	937,835	902,844
Trousdale	292,878	263,373	268,417	263,810	231,096	215,953	230,477	223,026
Unicoi	383,403	340,952	348,587	341,993	295,172	312,350	336,068	323,508
Union	1,375,459	1,242,352	1,254,999	1,233,297	1,079,150	1,101,418	1,177,314	1,126,542
Van Buren	435,574	390,675	394,777	387,451	335,421	340,091	365,362	353,285
Warren	972,199	869,573	887,289	871,282	757,612	784,319	840,784	796,824
Washington	1,495,154	1,320,699	1,370,495	1,345,033	1,164,220	1,188,742	1,277,167	1,231,386
Wayne	1,106,380	990,286	1,000,981	982,047	847,584	875,682	942,190	906,454
Weakley	1,027,945	916,919	932,543	914,914	789,720	834,728	898,081	864,107
White	752,464	671,407	683,849	671,069	580,312	594,614	639,166	618,027
Williamson	2,702,738	2,383,517	2,475,988	2,429,519	2,099,523	1,839,894	1,978,126	1,902,192
Wilson	1,908,346	1,687,836	1,744,451	1,711,707	1,479,179	1,359,603	1,461,825	1,407,649
<b>Total</b>	<b>\$129,303,077</b>	<b>\$115,210,055</b>	<b>\$118,042,398</b>	<b>\$115,879,984</b>	<b>\$100,523,880</b>	<b>\$102,129,184</b>	<b>\$109,601,944</b>	<b>\$105,652,995</b>

Source: Tennessee Department of Revenue.

## Appendix D: Distribution of Cities' Share of TVA Payments in Lieu of Taxes to Tennessee by Tennessee Fiscal Year

City	2025-26	2024-25	2023-24	2022-23	2021-22	2020-21	2019-20	2018-19
Adams	\$8,403	\$7,581	\$7,647	\$7,503	\$6,479	\$7,236	\$7,786	\$7,496
Adamsville	30,614	27,630	27,871	27,346	23,630	25,340	27,258	26,248
Alamo	31,462	28,385	28,634	28,092	24,260	28,136	30,275	29,149
Alcoa	147,830	133,369	134,536	131,991	113,982	96,577	103,918	100,053
Alexandria	13,210	11,918	12,022	11,795	10,185	11,042	11,881	11,439
Algood	53,366	48,146	48,567	47,648	41,147	39,950	42,986	41,388
Allardt	7,474	6,743	6,802	6,673	5,762	7,247	7,798	7,508
Altamont	15,042	13,570	13,689	13,430	11,598	11,945	12,853	12,375
Ardmore	16,388	14,785	14,914	14,632	12,636	13,865	14,919	14,364
Arlington	195,917	176,753	178,299	174,926	151,058	151,078	162,561	156,516
Ashland City	69,929	63,089	63,641	62,437	53,917	59,736	64,277	61,886
Athens	189,799	171,248	172,745	169,480	146,375	153,977	165,670	159,514
Atoka	134,768	121,585	122,649	120,329	103,910	108,293	116,525	112,191
Atwood	12,658	11,420	11,520	11,302	9,760	10,722	11,537	11,108
Auburntown	3,663	3,304	3,333	3,270	2,824	3,075	3,309	3,186
Baileytown	5,871	5,297	5,343	5,242	4,527	4,927	5,301	5,104
Baneberry	7,043	6,354	6,409	6,288	5,430	5,510	5,928	5,708
Bartlett	778,145	702,030	708,172	694,776	599,976	645,691	694,770	668,931
Baxter	21,249	19,171	19,339	18,973	16,384	15,603	16,789	16,164
Bean Station	39,954	36,045	36,361	35,673	30,806	34,909	37,562	36,165
Beersheba Springs	5,844	5,273	5,319	5,218	4,506	5,452	5,867	5,649
Bell Buckle	5,521	4,981	5,025	4,930	4,257	5,715	6,150	5,921
Belle Meade	39,065	35,244	35,552	34,879	30,120	33,286	35,816	34,484
Bells	33,167	29,922	30,184	29,613	25,573	27,856	29,974	28,859
Benton	20,509	18,503	18,664	18,311	15,813	15,831	17,035	16,401
Berry Hill	28,440	25,658	25,883	25,393	21,928	11,008	11,844	11,404
Bethel Springs	9,992	9,014	9,093	8,921	7,704	8,207	8,831	8,503
Big Sandy	7,224	6,584	6,636	6,523	5,726	7,046	7,530	7,276
Blaine	28,063	25,318	25,540	25,056	21,638	21,215	22,828	21,979

City	2025-26	2024-25	2023-24	2022-23	2021-22	2020-21	2019-20	2018-19
Bluff City	24,985	22,585	22,779	22,357	19,367	20,259	21,765	20,972
Botivar	70,090	63,234	63,788	62,581	54,042	61,919	66,626	64,148
Braden	3,434	3,098	3,125	3,066	2,648	3,223	3,468	3,339
Bradford	13,503	12,184	12,291	12,059	10,417	12,003	12,913	12,434
Brentwood	610,992	551,227	556,050	545,531	471,095	501,677	539,809	519,734
Brighton	38,890	35,086	35,393	34,723	29,985	31,263	33,639	32,388
Bristol	369,123	333,365	336,251	329,957	285,422	308,781	331,981	319,767
Brownsville	131,970	119,077	120,118	117,848	101,791	117,808	126,750	122,043
Bruceston	20,293	18,308	18,468	18,119	15,647	16,894	18,179	17,502
Bulls Gap	10,180	9,184	9,265	9,090	7,849	8,436	9,077	8,739
Burlison	4,942	4,459	4,498	4,413	3,810	4,858	5,227	5,033
Burns	21,182	19,110	19,277	18,913	16,332	16,780	18,056	17,384
Byrdstown	10,746	9,695	9,780	9,595	8,285	9,179	9,876	9,509
Calhoun	7,218	6,512	6,569	6,444	5,565	5,601	6,027	5,803
Camden	49,474	44,635	45,025	44,173	38,146	40,944	44,057	42,418
Carthage	30,851	27,833	28,076	27,545	23,787	26,359	28,362	27,308
Caryville	29,787	26,873	27,108	26,595	22,967	26,256	28,252	27,201
Cedar Hill	4,053	3,657	3,689	3,619	3,125	3,589	3,862	3,718
Celina	19,149	17,276	17,427	17,097	14,764	17,089	18,388	17,704
Centertown	3,999	3,608	3,640	3,571	3,084	2,778	2,989	2,878
Centerville	47,720	43,068	43,443	42,624	36,830	41,811	44,977	43,310
Chapel Hill	23,121	20,859	21,042	20,644	17,827	16,517	17,773	17,112
Charleston	12,012	10,837	10,932	10,725	6,894	7,441	8,007	7,709
Charlottesville	22,300	20,118	20,294	19,911	17,194	14,117	15,190	14,625
Chattanooga	2,497,584	2,257,486	2,262,401	2,220,419	1,923,319	1,959,629	2,105,311	2,028,614
Church Hill	94,235	85,017	85,761	84,139	72,658	77,008	82,861	79,780
Clarksburg	5,104	4,604	4,645	4,557	3,935	4,492	4,834	4,654
Clarksville	2,245,123	2,025,516	2,043,239	2,004,589	1,731,075	1,519,503	1,634,997	1,574,193
Cleveland	644,154	581,219	581,114	570,136	492,447	472,674	508,544	489,660
Clifton	35,698	32,206	32,488	31,874	27,525	30,794	33,135	31,902
Clinton	137,544	124,298	125,367	123,036	106,539	114,618	123,169	118,667
Coalmont	10,557	9,525	9,608	9,426	8,140	9,613	10,344	9,959
Collegedale	149,594	134,961	136,142	133,566	115,342	94,668	101,864	98,075
Collierville	691,128	623,524	628,980	617,082	532,883	520,663	560,239	539,403
Collinwood	12,092	10,910	11,005	10,797	9,324	11,225	12,078	11,629

City	2025-26	2024-25	2023-24	2022-23	2021-22	2020-21	2019-20	2018-19
Columbia	664,189	512,387	516,819	507,154	438,760	402,328	432,461	416,597
Cookeville	469,182	423,288	426,992	418,914	361,755	356,108	383,176	368,926
Coopertown	60,328	54,427	54,903	53,864	46,515	48,900	52,617	50,660
Copperhill	5,965	5,382	5,429	5,326	4,600	4,046	4,354	4,192
Cornersville	21,155	19,086	15,049	14,765	12,750	13,648	14,686	14,139
Cottage Grove	889	802	809	794	685	1,006	1,082	1,042
Covington	116,656	105,245	106,166	104,158	89,946	103,310	111,162	107,028
Cowan	23,936	21,619	21,806	21,399	18,513	20,105	21,614	20,819
Crab Orchard	9,696	8,747	8,824	8,657	7,476	8,596	9,249	8,905
Cross Plains	24,091	21,734	21,924	21,510	18,575	19,592	21,081	20,297
Crossville	162,548	146,648	147,931	145,133	125,330	132,183	142,231	136,941
Crump	21,465	19,365	19,535	19,165	16,550	16,323	17,564	16,910
Cumberland City	17,274	16,872	16,904	16,834	16,333	16,721	16,992	16,849
Cumberland Gap	5,063	4,568	4,608	3,763	3,250	5,647	6,076	5,850
Dandridge	45,841	41,436	41,791	41,016	35,530	32,953	35,396	34,110
Dayton	102,429	92,660	89,134	87,496	75,906	84,749	90,997	87,708
Decatur	21,047	18,989	19,155	18,792	16,228	18,266	19,654	18,924
Decaturville	10,943	9,880	9,966	9,778	8,455	9,986	10,739	10,343
Decherd	32,057	28,923	29,176	28,624	24,722	27,009	29,060	27,980
Dickson	216,237	195,085	196,792	193,070	166,726	166,178	178,809	172,159
Dover	24,589	22,184	22,378	21,954	18,959	16,197	17,428	16,780
Dowelltown	4,605	4,155	4,191	4,112	3,551	4,058	4,366	4,204
Doyle	6,639	5,989	6,042	5,927	5,119	6,138	6,605	6,359
Dresden	40,654	36,677	36,998	36,298	31,345	34,349	36,960	35,585
Ducktown	6,208	5,601	5,650	5,543	4,786	5,430	5,842	5,625
Dunlap	72,160	65,104	65,673	64,431	55,643	55,061	59,245	57,042
Dyer	31,079	28,039	28,285	27,750	23,963	26,759	28,793	27,722
Dyersburg	217,664	196,373	198,091	194,344	167,826	195,977	210,874	203,031
Eagleville	10,948	9,877	9,963	9,775	8,441	6,904	7,429	7,153
East Ridge	298,500	269,302	271,658	266,520	230,154	239,802	258,030	248,433
Eastview	10,275	9,270	9,351	9,174	7,922	8,059	8,671	8,349
Elizabethton	197,165	178,005	179,551	176,179	152,316	163,329	175,645	169,161
Elkton	7,339	6,621	6,679	6,553	5,659	6,607	7,109	6,845
Englewood	21,161	19,207	19,365	19,021	16,588	18,702	20,034	19,333
Enville	2,532	2,284	2,304	2,260	1,952	2,160	2,325	2,238

City	2025-26	2024-25	2023-24	2022-23	2021-22	2020-21	2019-20	2018-19
Erin	16,482	14,870	15,000	14,716	12,708	15,134	16,284	15,679
Erwin	81,938	73,925	74,572	73,162	63,182	69,717	75,014	72,225
Estill Springs	38,877	35,309	30,180	29,654	25,935	25,888	27,673	26,733
Ethridge	7,231	6,524	6,581	6,456	5,576	5,315	5,719	5,507
Etowah	48,518	43,772	44,155	43,320	37,409	39,893	42,925	41,329
Fairview	126,001	113,676	114,671	112,502	97,151	91,468	98,420	94,760
Farragut	316,531	285,569	288,068	282,619	244,056	259,200	278,902	268,529
Fayetteville	95,230	85,920	86,671	85,033	73,437	78,089	84,020	80,898
Finger	3,717	3,353	3,382	3,318	2,866	3,406	3,665	3,529
Forest Hills	67,842	61,206	61,741	60,573	52,308	57,610	61,989	59,684
Franklin	1,123,932	1,014,006	1,022,878	1,003,531	866,622	810,662	872,269	839,835
Friendship	8,260	7,452	7,517	7,375	6,369	7,641	8,221	7,915
Friendsville	12,066	10,885	10,981	10,773	9,303	10,436	11,229	10,812
Gadsden	6,316	5,698	5,748	5,639	4,870	5,372	5,781	5,566
Gainesboro	12,389	11,177	11,275	11,061	9,552	10,996	11,832	11,392
Gallatin	675,844	539,783	544,506	534,206	461,315	394,046	423,998	408,229
Galloway	7,110	6,415	6,471	6,348	5,482	7,773	8,364	8,053
Garland	3,892	3,511	3,542	3,475	3,001	3,543	3,813	3,671
Gates	8,941	8,067	8,137	7,983	6,894	7,396	7,958	7,662
Gatlinburg	48,168	43,456	43,836	43,007	37,139	45,082	48,509	46,705
Germanatown	556,590	502,146	506,539	496,957	429,149	458,629	493,490	475,137
Gibson	4,929	4,446	4,485	4,401	3,800	4,527	4,871	4,689
Gilt Edge	6,410	5,783	5,833	5,723	4,942	5,452	5,867	5,649
Gleason	18,435	16,632	16,777	16,460	14,214	16,517	17,773	17,112
Goodlettsville	239,546	216,115	218,006	213,882	184,698	181,986	195,819	188,537
Gordonsville	18,354	16,559	16,704	16,388	14,152	13,865	14,919	14,364
Grand Junction	4,552	4,106	4,142	4,064	3,509	3,715	3,997	3,849
Graysville	19,808	17,871	18,027	17,686	15,273	17,169	18,474	17,787
Greenback	14,840	13,388	13,505	13,250	11,442	12,162	13,087	12,600
Greenbrier	92,888	83,802	84,536	82,936	71,620	73,533	79,122	76,180
Greeneville	208,657	188,268	189,913	186,325	160,931	172,384	185,471	178,581
Greenfield	27,349	24,674	24,890	24,419	21,087	24,942	26,837	25,839
Gruetti-Laager	23,458	21,163	21,348	20,945	18,087	20,724	22,299	21,470
Guys	5,575	5,030	5,074	4,978	4,298	5,327	5,732	5,518
Halls	28,157	25,403	25,625	25,141	21,710	25,776	27,735	26,704

City	2025-26	2024-25	2023-24	2022-23	2021-22	2020-21	2019-20	2018-19
Harriman	82,340	74,579	75,205	73,839	64,173	75,582	81,100	78,195
Harrigate	59,250	53,455	53,922	52,902	45,684	50,169	53,982	51,975
Hartsville	36,681	33,093	33,383	32,751	28,283	27,079	29,137	28,054
Henderson	84,943	76,635	77,305	75,843	65,494	72,116	77,597	74,711
Hendersonville	831,565	750,224	756,788	742,472	641,164	587,212	631,846	608,348
Henning	11,729	10,582	10,674	10,472	9,043	10,802	11,623	11,191
Henry	6,006	5,418	5,466	5,362	4,631	5,304	5,707	5,495
Hickory Valley	1,050	948	956	938	810	1,132	1,218	1,172
Hohenwald	49,647	44,815	45,205	44,355	38,337	43,198	46,463	44,744
Hollow Rock	9,197	8,298	8,370	8,212	7,091	8,207	8,831	8,503
Hornbeak	6,881	6,208	6,262	6,144	5,306	6,093	6,556	6,312
Hornsby	3,555	3,207	3,235	3,174	2,741	3,463	3,727	3,588
Humboldt	106,035	95,663	96,500	94,675	81,757	96,615	103,958	100,092
Huntingdon	59,776	53,928	54,400	53,371	46,089	45,551	49,013	47,190
Huntland	11,931	10,764	10,858	10,653	9,199	9,967	10,725	10,326
Huntsville	22,138	19,973	15,564	15,270	13,186	18,095	19,470	18,746
Jacksboro	31,053	28,015	28,260	27,726	23,943	23,090	24,845	23,921
Jackson	920,007	830,168	837,418	821,607	709,714	746,960	803,618	773,789
Jamestown	27,269	24,601	23,714	23,265	20,091	22,393	24,095	23,198
Jasper	48,639	43,881	44,265	43,428	37,502	37,984	40,871	39,351
Jefferson City	113,803	102,713	103,608	101,656	87,845	97,478	104,855	100,971
Jellico	29,006	26,168	26,397	25,898	22,364	26,919	28,965	27,888
Johnson City	959,716	866,134	873,687	857,217	740,663	724,876	779,745	750,858
Jonesborough	78,911	71,192	71,815	70,456	60,843	57,736	62,124	59,814
Kenton	17,142	15,465	14,767	14,488	12,511	14,643	15,756	15,170
Kimball	20,805	18,770	18,934	18,576	16,041	15,946	17,158	16,520
Kingsport	746,581	673,553	679,446	666,594	575,639	586,092	630,641	607,187
Kingston	84,908	76,878	75,774	74,394	64,628	70,648	75,804	73,090
Kingston Springs	38,028	34,308	34,608	33,954	29,321	31,503	33,897	32,637
Knoxville	2,606,018	2,354,775	2,375,050	2,330,833	2,017,916	2,082,150	2,237,563	2,155,743
Lafayette	1,656	1,494	68,432	67,138	57,977	51,140	55,028	52,981
Lafollette	75,194	67,839	91,219	89,496	77,307	85,390	91,868	88,458
Lagrange	100,216	90,429	1,507	1,479	1,277	1,520	1,636	1,575
Lakeland	187,231	168,917	170,395	167,171	144,361	142,082	152,882	147,196
Lakesite	24,993	22,548	22,745	22,315	19,270	20,872	22,459	21,624

City	2025-26	2024-25	2023-24	2022-23	2021-22	2020-21	2019-20	2018-19
La Vergne	521,389	470,389	474,505	465,529	402,009	393,372	423,272	407,531
Lawrenceburg	156,650	141,327	142,563	139,867	120,782	119,198	128,258	123,488
Lebanon	602,984	467,675	471,760	462,851	399,804	374,931	403,370	388,398
Lenoir City	137,760	124,434	125,509	123,164	106,566	100,307	107,816	103,863
Lewisburg	166,143	149,957	151,263	148,415	128,256	127,552	137,196	132,119
Lexington	107,334	96,855	97,700	95,856	82,804	87,666	94,314	90,814
Liberty	4,498	4,058	4,093	4,016	3,468	3,543	3,813	3,671
Linden	13,432	12,119	12,225	11,994	10,358	10,386	11,175	10,759
Livingston	52,585	47,441	47,856	46,951	40,545	46,385	49,911	48,055
Lobelville	12,375	11,165	11,262	11,049	9,542	10,253	11,033	10,622
Lookout Mountain	27,713	25,002	25,221	24,744	21,368	20,941	22,533	21,695
Loretto	23,417	21,127	21,312	20,908	18,056	19,592	21,081	20,297
Loudon	83,947	76,056	76,693	75,304	65,475	64,781	69,456	66,994
Louisville	59,035	53,260	53,726	52,710	45,518	45,951	49,444	47,605
Luttrell	13,695	12,355	12,463	12,228	10,559	12,276	13,210	12,718
Lynchburg	6,254	5,650	5,698	5,592	4,839	6,612	7,109	6,847
Lynnville	3,988	3,603	3,634	3,566	3,087	3,336	3,586	3,454
Madisonville	69,107	62,348	62,893	61,703	53,284	52,318	56,294	54,201
Manchester	164,447	148,361	149,659	146,828	126,794	115,472	124,249	119,628
Martin	148,714	134,207	133,074	130,565	112,806	131,556	141,524	136,276
Maryville	429,659	387,631	391,023	383,626	331,282	314,753	338,677	326,081
Mason	18,004	16,243	16,385	16,075	13,882	18,392	19,790	19,054
Maury City	7,851	7,083	7,145	7,010	6,053	7,704	8,290	7,982
Maynardville	33,072	29,837	30,098	29,529	25,500	27,582	29,679	28,575
McEwen	22,278	20,114	20,288	19,907	17,212	20,157	21,677	20,877
McKenzie	74,453	67,171	67,758	66,477	57,406	60,696	65,310	62,881
McLemoresville	3,878	3,499	3,529	3,463	2,990	4,024	4,329	4,168
McMinnville	185,928	167,766	169,232	166,035	143,416	155,772	167,592	161,369
Medina	69,027	62,275	62,820	61,631	53,222	55,118	59,308	57,102
Medon	2,545	2,296	2,316	2,272	1,962	2,583	2,780	2,676
Memphis	8,773,780	7,934,827	7,955,730	7,809,000	6,770,368	7,591,343	8,153,386	7,857,488
Michie	9,143	8,249	8,321	8,164	7,050	6,755	7,269	6,999
Middleton	8,861	7,994	8,064	7,911	6,832	8,070	8,683	8,360
Milan	110,031	99,268	100,136	98,242	84,837	89,742	96,563	92,972
Milledgeville	3,649	3,292	3,321	3,258	2,814	3,029	3,259	3,138

City	2025-26	2024-25	2023-24	2022-23	2021-22	2020-21	2019-20	2018-19
Millersville	84,822	76,525	77,195	75,735	65,401	73,613	79,208	76,263
Millington	142,497	128,558	129,683	127,230	109,870	127,245	136,917	131,825
Minor Hill	6,787	6,123	6,177	6,060	5,233	6,138	6,605	6,359
Mitchellville	2,195	1,980	1,998	1,960	1,692	2,160	2,325	2,238
Monteagle	18,758	16,923	17,071	16,748	14,463	13,625	14,661	14,116
Monterey	37,046	33,429	33,721	33,084	28,579	32,645	35,121	33,818
Morrison	9,871	8,905	8,983	8,813	7,611	7,933	8,536	8,218
Morristown	409,783	369,700	372,934	365,880	315,957	333,053	358,368	345,041
Moscow	7,703	6,949	7,010	6,877	5,939	6,355	6,838	6,584
Mosheim	33,382	30,117	30,380	29,806	25,739	26,999	29,051	27,971
Mount Carmel	73,699	66,490	67,072	65,803	56,825	62,057	66,774	64,290
Mount Juliet	542,531	489,462	481,490	472,382	407,927	358,646	385,907	371,555
Mount Pleasant	71,683	64,707	65,270	64,042	50,038	58,583	63,008	60,678
Mountain City	32,520	29,339	29,596	29,036	25,074	28,931	31,130	29,972
Murford	84,863	76,562	77,232	75,771	65,432	69,841	75,149	72,355
Murfreesboro	2,058,117	1,856,889	1,873,128	1,837,713	1,587,090	1,405,796	1,512,580	1,456,362
Nashville	6,895,395	6,221,586	6,275,963	6,157,376	5,318,165	5,148,424	5,539,230	5,333,483
New Hope	13,291	11,991	12,096	11,867	10,248	12,368	13,308	12,813
New Johnsonville	24,779	22,403	22,594	22,176	19,217	22,787	24,482	23,590
New Market	18,166	16,389	16,532	16,219	14,006	15,248	16,407	15,797
New Tazewell	37,287	33,640	33,934	33,292	28,750	34,715	37,353	35,964
Newbern	45,098	40,686	41,042	40,266	34,772	37,870	40,748	39,233
Newport	92,630	83,583	84,313	82,721	71,454	79,531	85,565	82,388
Niota	11,840	10,823	10,905	10,726	9,459	9,662	10,287	9,958
Nolensville	226,713	204,537	169,476	166,270	143,583	126,845	136,487	131,411
Normandy	1,454	1,312	1,324	1,299	1,121	1,612	1,734	1,670
Norris	21,532	19,426	19,596	19,225	16,602	18,620	20,036	19,291
Oak Hill	65,862	59,420	59,940	58,806	50,782	53,598	57,672	55,527
Oak Ridge	426,142	384,779	388,117	380,837	329,321	338,542	364,025	350,609
Oakdale	2,572	2,320	2,341	2,296	1,983	2,423	2,607	2,511
Oakland	120,332	108,562	109,511	107,440	92,780	75,705	81,459	78,430
Obion	13,345	12,039	12,145	11,915	10,289	12,791	13,763	13,251
Oliver Springs	44,397	40,055	40,405	39,641	34,232	36,932	39,739	38,262
Oneida	50,996	46,007	46,410	45,532	39,319	42,888	46,147	44,431
Ortinda	12,752	11,505	11,606	11,386	9,832	9,819	10,565	10,172

City	2025-26	2024-25	2023-24	2022-23	2021-22	2020-21	2019-20	2018-19
Orme	1,172	1,057	1,066	1,046	903	1,440	1,550	1,492
Palmer	7,420	6,694	6,753	6,625	5,721	7,681	8,265	7,958
Paris	138,915	125,327	126,423	124,032	107,108	116,089	124,913	120,267
Parkers Crossroads	3,824	3,450	3,480	3,415	2,949	3,772	4,059	3,908
Parrottville	2,922	2,636	2,659	2,609	2,253	3,006	3,235	3,114
Parsons	28,773	26,006	26,230	25,743	22,298	27,619	29,680	28,595
Pegram	27,902	25,172	25,393	24,912	21,513	23,924	25,743	24,785
Petersburg	7,491	6,795	6,851	6,729	5,863	6,599	7,071	6,823
Philadelphia	8,174	7,374	7,439	7,298	6,302	7,498	8,068	7,768
Pigeon Forge	85,415	77,060	77,734	76,264	65,858	67,155	72,259	69,572
Pikeville	24,562	22,159	22,353	21,930	18,938	18,380	19,777	19,042
Piperton	37,718	34,029	27,733	27,209	23,496	22,975	24,722	19,326
Pittman Center	6,114	5,516	5,564	5,459	4,714	5,738	6,174	5,945
Plainview	27,740	25,026	25,245	24,768	21,388	24,290	26,136	25,164
Pleasant Hill	7,272	6,560	6,618	6,493	5,607	6,435	6,925	6,667
Pleasant View	64,731	58,399	58,910	57,796	49,910	48,260	51,928	49,997
Portland	177,158	159,829	161,228	158,178	136,595	131,223	141,197	135,946
Powells Crossroads	17,452	15,745	15,883	15,582	13,456	15,111	16,260	15,655
Pulaski	113,074	102,013	102,906	100,959	87,184	89,959	96,796	93,197
Puryear	9,507	8,577	8,652	8,488	7,330	7,670	8,253	7,946
Ramer	4,376	3,948	3,983	3,908	3,374	3,646	3,924	3,778
Red Bank	160,232	144,558	145,823	143,065	123,544	133,178	143,301	137,971
Red Boiling Springs	16,227	14,639	14,767	14,488	12,511	12,711	13,677	13,168
Ridgely	22,758	20,531	20,711	20,319	17,547	20,518	22,077	21,256
Ridgeside	6,006	5,418	5,466	5,362	4,631	4,458	4,797	4,618
Ridgetop	29,019	26,181	26,410	25,910	22,375	23,478	25,263	24,323
Ripley	105,035	94,760	95,590	93,781	80,985	96,531	103,869	100,006
Rives	3,313	2,989	3,015	2,958	2,554	3,726	4,010	3,860
Rockford	11,433	10,314	10,074	9,883	8,535	9,785	10,528	10,137
Rockwood	73,309	66,138	66,717	65,455	56,524	63,577	68,409	65,865
Rocky Top	22,422	20,278	20,451	20,074	17,403	20,858	22,405	21,590
Rogersville	62,900	56,747	57,243	56,161	48,498	50,523	54,363	52,342
Rossville	14,018	12,647	12,758	12,516	10,808	12,094	13,013	10,670
Rutherford	15,661	14,129	14,253	13,983	12,075	13,157	14,157	13,630
Rutledge	17,789	16,049	16,189	15,883	13,716	14,848	15,977	15,383

City	2025-26	2024-25	2023-24	2022-23	2021-22	2020-21	2019-20	2018-19
Saltito	5,656	5,102	5,147	5,050	4,361	6,710	7,220	6,951
Samburg	2,828	2,551	2,574	2,525	2,180	2,480	2,669	2,570
Sardis	5,575	5,030	5,074	4,978	4,298	4,355	4,686	4,512
Saulsberry	1,508	1,361	1,373	1,347	1,163	1,280	1,378	1,326
Savannah	99,313	89,618	88,599	86,927	75,094	80,012	86,078	82,884
Scotts Hill	11,810	10,654	10,748	10,544	9,106	11,248	12,103	11,653
Selmer	59,875	54,019	54,492	53,461	46,167	50,254	54,074	52,063
Sevierville	242,872	219,115	219,231	215,084	185,737	169,253	182,118	175,345
Sharon	12,630	11,398	11,498	11,281	9,747	10,830	11,650	11,218
Shelbyville	321,173	290,144	292,648	287,187	248,541	236,396	254,064	244,762
Signal Mountain	119,201	107,541	108,482	106,430	91,908	95,594	102,860	99,035
Silerton	1,306	1,178	1,189	1,166	1,007	1,269	1,365	1,314
Slayden	2,289	2,065	2,083	2,044	1,765	2,035	2,189	2,108
Smithville	67,384	60,792	61,324	60,164	51,955	51,781	55,716	53,644
Smyrna	714,640	644,736	650,377	638,074	551,011	543,193	584,481	562,744
Sneedville	17,263	15,575	15,711	15,414	13,311	15,854	17,059	16,425
Soddy Daisy	176,000	158,785	160,174	157,144	135,702	145,328	156,375	150,559
Somerville	45,986	41,488	41,851	41,059	35,457	35,366	38,054	36,639
South Carthage	20,064	18,102	18,260	17,915	15,470	15,111	16,260	15,655
South Fulton	30,231	27,274	27,513	26,992	23,309	26,908	28,953	27,876
South Pittsburg	42,145	38,053	38,384	37,664	32,568	34,520	37,119	35,751
Sparta	67,682	61,099	61,630	60,472	52,272	58,344	62,750	60,430
Spencer	19,687	17,762	17,917	17,578	15,180	18,300	19,691	18,959
Spring City	27,616	25,049	25,256	24,804	21,607	24,015	25,736	24,830
Spring Hill	677,622	611,339	612,815	601,223	519,188	462,207	497,339	478,843
Springfield	252,918	228,178	230,175	225,821	195,008	187,919	202,203	194,683
St. Joseph	10,638	9,598	9,682	9,498	8,202	8,939	9,618	9,260
Stanton	5,615	5,066	5,110	5,014	4,330	5,167	5,559	5,353
Stantonville	4,511	4,070	4,105	4,028	3,478	3,235	3,481	3,351
Sunbright	6,989	6,305	6,360	6,240	5,389	6,310	6,789	6,537
Surgoinsville	25,343	22,864	23,064	22,628	19,540	20,586	22,151	21,327
Sweetwater	85,475	77,161	77,832	76,369	66,014	69,176	74,397	71,648
Tazewell	31,618	28,525	28,775	28,231	24,379	25,387	27,317	26,301
Tellico Plains	10,299	9,296	9,377	9,200	7,950	10,097	10,862	10,459
Tennessee Ridge	17,937	16,182	16,324	16,015	13,830	15,637	16,826	16,200

City	2025-26	2024-25	2023-24	2022-23	2021-22	2020-21	2019-20	2018-19
Thompson's Station	100,793	90,934	91,729	89,994	77,715	54,021	58,127	55,965
Three Way	25,276	22,803	23,003	22,568	19,488	19,535	21,020	20,238
Tiptonville	53,541	48,304	48,726	47,804	41,282	51,026	54,905	52,863
Toone	3,636	3,280	3,309	3,246	2,803	4,161	4,477	4,310
Townsend	7,406	6,682	6,740	6,613	5,711	5,121	5,510	5,305
Tracy City	18,933	17,081	17,231	16,905	14,598	16,929	18,215	17,538
Trenton	57,096	51,511	51,962	50,979	44,023	48,740	52,445	50,494
Trezevant	10,759	9,707	9,792	9,607	8,296	9,819	10,565	10,172
Trimble	7,366	6,645	6,704	6,577	5,679	7,281	7,835	7,543
Troy	19,162	17,288	17,439	17,109	14,775	15,671	16,863	16,235
Tullahoma	274,559	247,768	249,930	245,215	211,848	213,912	230,120	221,587
Tusculum	44,411	40,067	40,417	39,653	34,242	30,440	32,753	31,535
Unicoi	51,615	46,566	46,974	46,085	39,797	41,516	44,672	43,010
Union City	150,415	135,702	136,889	134,300	115,975	124,536	134,002	129,019
Vanleer	5,036	4,544	4,583	4,497	3,883	4,515	4,858	4,678
Viola	1,252	1,130	1,140	1,118	966	1,497	1,611	1,551
Vonore	21,195	19,122	19,290	18,925	16,342	16,849	18,129	17,455
Walden	26,676	24,067	24,277	23,818	20,568	21,695	23,344	22,476
Wartburg	11,419	10,302	10,392	10,196	8,805	10,493	11,291	10,871
Wartrace	8,793	7,933	8,003	7,851	6,780	7,441	8,007	7,709
Watauga	4,753	4,289	4,326	4,244	3,665	5,235	5,633	5,424
Watertown	20,913	18,867	19,032	18,672	16,124	16,883	18,166	17,491
Waverly	57,863	52,203	52,660	51,664	44,615	46,923	50,489	48,611
Waynesboro	31,201	28,149	28,395	27,858	24,057	27,994	30,121	29,001
Westmoreland	37,853	34,150	33,309	32,679	28,220	25,216	27,133	26,123
White Bluff	52,006	46,919	47,329	46,434	40,098	36,646	39,432	37,965
White House	174,815	157,716	159,095	156,086	134,789	132,595	142,673	137,367
White Pine	33,274	30,020	30,282	29,709	25,656	25,102	27,010	26,005
Whiteville	61,459	55,447	55,932	54,874	27,057	53,015	57,045	54,923
Whitwell	22,098	19,936	20,111	19,730	17,038	19,421	20,897	20,120
Williston	4,700	4,240	4,277	4,196	3,624	4,515	4,858	4,678
Winchester	142,959	116,929	117,925	115,752	100,372	100,537	107,948	104,046
Winfield	12,752	11,505	11,606	11,386	9,832	11,945	12,853	12,375
Woodbury	36,399	32,838	33,125	32,499	28,065	30,634	32,962	31,737
Woodland Mills	4,659	4,203	4,240	4,160	3,592	4,321	4,649	4,476

City	2025-26	2024-25	2023-24	2022-23	2021-22	2020-21	2019-20	2018-19
Yorkville	3,178	2,867	2,892	2,837	2,450	3,269	3,518	3,387
Total	\$54,592,889	\$49,041,693	\$49,312,064	\$48,385,315	\$41,804,128	\$42,492,115	\$45,694,727	\$44,002,320

Source: Tennessee Department of Revenue.

## Appendix E: Impact Payments Distributed to Counties in Areas Affected by TVA Construction by Tennessee Fiscal Year

County	2025-26	2024-25	2023-24	2022-23	2021-22	2020-21	2019-20	2018-19
Anderson	\$-	\$-	\$-	\$-	\$-	\$-	\$-	\$-
Bedford	-	-	-	-	-	-	-	-
Benton	908,941	815,962	-	-	-	-	-	-
Bledsoe	-	-	-	-	-	-	-	-
Blount	-	-	-	-	-	-	-	-
Bradley	-	-	-	-	-	-	-	-
Campbell	-	-	-	-	-	-	-	-
Cannon	-	-	-	-	-	-	-	-
Carroll	-	-	-	-	-	-	-	-
Carter	-	-	-	-	-	-	-	-
Cheatham	-	-	-	-	-	-	-	-
Chester	-	-	-	-	-	-	-	-
Claiborne	-	-	-	-	-	-	-	-
Clay	-	-	-	-	-	-	-	-
Cocke	-	-	-	-	-	-	-	-
Coffee	-	-	-	-	-	-	-	-
Crockett	-	-	-	-	-	-	-	-
Cumberland	-	-	-	-	-	-	-	-
Davidson	-	-	-	-	-	-	-	-
Decatur	-	-	-	-	-	-	-	-
DeKalb	-	-	-	-	-	-	-	-
Dickson	-	-	-	-	-	-	-	-
Dyer	-	-	-	-	-	-	-	-
Fayette	-	-	-	-	-	-	-	-
Fentress	-	-	-	-	-	-	-	-
Franklin	-	-	-	-	-	-	-	-
Gibson	-	-	-	-	-	-	-	-
Giles	-	-	-	-	-	-	-	-
Grainger	-	-	-	-	-	-	-	-
Greene	-	-	-	-	-	-	-	-
Grundy	-	-	-	-	-	-	-	-
Hamblen	-	-	-	-	-	-	-	-
Hamilton	-	-	-	-	-	-	-	-
Hancock	-	-	-	-	-	-	-	-
Hardeman	-	-	-	-	-	-	-	-
Hardin	-	-	-	-	-	-	-	-
Hawkins	-	-	-	-	-	-	-	-
Haywood	-	-	-	-	-	-	-	-
Henderson	-	-	-	-	-	-	-	-
Henry	843,398	757,123	-	-	-	-	-	-
Hickman	-	-	-	-	-	-	-	-

County	2025-26	2024-25	2023-24	2022-23	2021-22	2020-21	2019-20	2018-19
Houston	876,743	787,057	-	-	-	-	-	-
Humphreys	814,958	731,592	-	-	-	-	-	-
Jackson	-	-	-	-	-	-	-	-
Jefferson	-	-	-	-	-	-	-	-
Johnson	-	-	-	-	-	-	-	-
Knox	-	-	-	-	-	-	-	-
Lake	-	-	-	-	-	-	-	-
Lauderdale	-	-	-	-	-	-	-	-
Lawrence	-	-	-	-	-	-	-	-
Lewis	-	-	-	-	-	-	-	-
Lincoln	-	-	-	-	-	-	-	-
Loudon	-	-	-	-	-	-	-	-
Macon	-	-	-	-	-	-	-	-
Madison	-	-	-	-	-	-	-	-
Marion	-	-	-	-	-	-	-	-
Marshall	-	-	-	-	-	-	-	-
Maury	-	-	-	-	-	-	-	-
McMinn	103,589	139,488	183,925	181,010	-	-	-	26
McNairy	-	-	-	-	-	-	-	-
Meigs	511,038	688,143	907,365	892,984	-	-	-	200,358
Monroe	88,397	119,032	156,952	154,465	-	-	-	22
Montgomery	-	-	-	-	-	-	-	-
Moore	-	-	-	-	-	-	-	-
Morgan	-	-	-	-	-	-	-	-
Obion	-	-	-	-	-	-	-	-
Overton	-	-	-	-	-	-	-	-
Perry	-	-	-	-	-	-	-	-
Pickett	-	-	-	-	-	-	-	-
Polk	-	-	-	-	-	-	-	-
Putnam	-	-	-	-	-	-	-	-
Rhea	431,413	580,922	772,206	759,968	-	-	-	170,414
Roane	975,080	948,280	289,096	284,514	-	-	-	117,906
Robertson	-	-	-	-	-	-	-	-
Rutherford	-	-	-	-	-	-	-	-
Scott	-	-	-	-	-	-	-	-
Sequatchie	-	-	-	-	-	-	-	-
Sevier	-	-	-	-	-	-	-	-
Shelby	-	-	-	-	113,440	229,972	372,309	481,630
Smith	-	-	-	-	-	-	-	-
Stewart	992,435	890,915	-	-	-	-	-	-
Sullivan	188,484	338,406	501,988	658,710	562,001	582,549	628,740	610,017
Sumner	-	-	-	-	124,693	252,373	408,575	528,545
Tipton	-	-	-	-	-	-	-	-
Trousdale	-	-	-	-	-	-	-	-
Unicoi	-	-	-	-	-	-	-	-
Union	-	-	-	-	-	-	-	-
VanBuren	-	-	-	-	-	-	-	-
Warren	-	-	-	-	-	-	-	-

County	2025-26	2024-25	2023-24	2022-23	2021-22	2020-21	2019-20	2018-19
Washington	183,622	329,676	489,039	641,718	547,504	563,768	608,469	590,350
Wayne	-	-	-	-	-	-	-	-
Weakley	-	-	-	-	-	-	-	-
White	-	-	-	-	-	-	-	-
Williamson	-	-	-	-	-	-	-	-
Wilson	-	-	-	-	-	-	-	-
<b>Total</b>	<b>\$6,918,097</b>	<b>\$7,126,596</b>	<b>\$3,300,573</b>	<b>\$3,573,369</b>	<b>\$1,347,638</b>	<b>\$1,628,661</b>	<b>\$2,018,093</b>	<b>\$2,699,268</b>

Source: Tennessee Department of Revenue.

## Appendix F: Impact Payments Distributed to Cities in Areas Affected by TVA Construction by Tennessee Fiscal Year

City	2025-26	2024-25	2023-24	2022-23	2021-22	2020-21	2019-20	2018-19
Adams	\$-	\$-	\$-	\$-	\$-	\$-	\$-	\$-
Adamsville	-	-	-	-	-	-	-	-
Alamo	-	-	-	-	-	-	-	-
Alcoa	-	-	-	-	-	-	-	-
Alexandria	-	-	-	-	-	-	-	-
Algood	-	-	-	-	-	-	-	-
Allardt	-	-	-	-	-	-	-	-
Altamont	-	-	-	-	-	-	-	-
Ardmore	-	-	-	-	-	-	-	-
Arlington	-	-	-	-	1,775	3,277	5,305	6,862
Ashland City	-	-	-	-	-	-	-	-
Athens	27,385	36,875	48,622	47,852	-	-	-	7
Atoka	-	-	-	-	-	-	-	-
Atwood	-	-	-	-	-	-	-	-
Auburntown	-	-	-	-	-	-	-	-
Baileyton	-	-	-	-	-	-	-	-
Baneberry	-	-	-	-	-	-	-	-
Bartlett	-	-	-	-	7,051	14,004	22,671	29,328
Baxter	-	-	-	-	-	-	-	-
Bean Station	-	-	-	-	-	-	-	-
Beersheba Springs	-	-	-	-	-	-	-	-
Bell Buckle	-	-	-	-	-	-	-	-
Belle Meade	-	-	-	-	-	-	-	-
Bells	-	-	-	-	-	-	-	-
Benton	-	-	-	-	-	-	-	-
Berry Hill	-	-	-	-	-	-	-	-
Bethel Springs	-	-	-	-	-	-	-	-
Big Sandy	27,846	24,997	-	-	-	-	-	-
Blaine	-	-	-	-	-	-	-	-

City	2025-26	2024-25	2023-24	2022-23	2021-22	2020-21	2019-20	2018-19
Bluff City	2,171	3,898	5,783	7,588	6,474	6,438	6,948	6,741
Bolivar	-	-	-	-	-	-	-	-
Braden	-	-	-	-	-	-	-	-
Bradford	-	-	-	-	-	-	-	-
Brentwood	-	-	-	-	-	-	-	-
Brighton	-	-	-	-	-	-	-	-
Bristol	32,351	58,084	86,161	113,061	96,462	99,190	107,054	103,867
Brownsville	-	-	-	-	-	-	-	-
Bruceston	-	-	-	-	-	-	-	-
Bulls Gap	-	-	-	-	-	-	-	-
Burlison	-	-	-	-	-	-	-	-
Burns	-	-	-	-	-	-	-	-
Byrdstown	-	-	-	-	-	-	-	-
Calhoun	1,042	1,403	1,850	1,821	-	-	-	0.24
Camden	210,505	188,972	-	-	-	-	-	-
Carthage	-	-	-	-	-	-	-	-
Caryville	-	-	-	-	-	-	-	-
Cedar Hill	-	-	-	-	-	-	-	-
Celina	-	-	-	-	-	-	-	-
Centertown	-	-	-	-	-	-	-	-
Centerville	-	-	-	-	-	-	-	-
Chapel Hill	-	-	-	-	-	-	-	-
Charleston	-	-	-	-	-	-	-	-
Charlotte	-	-	-	-	-	-	-	-
Chattanooga	-	-	-	-	-	-	-	-
Church Hill	-	-	-	-	-	-	-	-
Clarksburg	-	-	-	-	-	-	-	-
Clarksville	-	-	-	-	-	-	-	-
Cleveland	-	-	-	-	-	-	-	-
Clifton	-	-	-	-	-	-	-	-
Clinton	-	-	-	-	-	-	-	-
Coalmont	-	-	-	-	-	-	-	-
Collegedale	-	-	-	-	-	-	-	-
Collierville	-	-	-	-	6,262	11,292	18,281	23,649
Collinwood	-	-	-	-	-	-	-	-

City	2025-26	2024-25	2023-24	2022-23	2021-22	2020-21	2019-20	2018-19
Columbia	-	-	-	-	-	-	-	-
Cookeville	-	-	-	-	-	-	-	-
Coopertown	-	-	-	-	-	-	-	-
Copperhill	-	-	-	-	-	-	-	-
Cornersville	-	-	-	-	-	-	-	-
Cottage Grove	1,729	1,552	-	-	-	-	-	-
Covington	-	-	-	-	-	-	-	-
Cowan	-	-	-	-	-	-	-	-
Crab Orchard	-	-	-	-	-	-	-	-
Cross Plains	-	-	-	-	-	-	-	-
Crossville	-	-	-	-	-	-	-	-
Crump	-	-	-	-	-	-	-	-
Cumberland City	22,164	19,897	-	-	-	-	-	-
Cumberland Gap	-	-	-	-	-	-	-	-
Dandridge	-	-	-	-	-	-	-	-
Dayton	97,347	131,083	165,976	163,346	-	-	-	38,525
Decatur	62,608	84,305	111,163	109,401	-	-	-	27,242
Decaturville	-	-	-	-	-	-	-	-
Decherd	-	-	-	-	-	-	-	-
Dickson	-	-	-	-	-	-	-	-
Dover	132,693	119,119	-	-	-	-	-	-
Dowelltown	-	-	-	-	-	-	-	-
Doyle	-	-	-	-	-	-	-	-
Dresden	-	-	-	-	-	-	-	-
Ducktown	-	-	-	-	-	-	-	-
Dunlap	-	-	-	-	-	-	-	-
Dyer	-	-	-	-	-	-	-	-
Dyersburg	-	-	-	-	-	-	-	-
Eagleville	-	-	-	-	-	-	-	-
East Ridge	-	-	-	-	-	-	-	-
EastView	-	-	-	-	-	-	-	-
Elizabethton	-	-	-	-	-	-	-	-
Elkton	-	-	-	-	-	-	-	-
Englewood	2,884	3,883	5,120	5,039	-	-	-	1
Enville	-	-	-	-	-	-	-	-

City	2025-26	2024-25	2023-24	2022-23	2021-22	2020-21	2019-20	2018-19
Erin	129,559	116,305	-	-	-	-	-	-
Erwin	-	-	-	-	-	-	-	-
Estill Springs	-	-	-	-	-	-	-	-
Ethridge	-	-	-	-	-	-	-	-
Etawah	7,006	9,433	12,439	12,242	-	-	-	2
Fairview	-	-	-	-	-	-	-	-
Farragut	-	-	-	-	-	-	-	-
Fayetteville	-	-	-	-	-	-	-	-
Finger	-	-	-	-	-	-	-	-
Forest Hills	-	-	-	-	-	-	-	-
Franklin	-	-	-	-	-	-	-	-
Friendship	-	-	-	-	-	-	-	-
Friendsville	-	-	-	-	-	-	-	-
Gadsden	-	-	-	-	-	-	-	-
Gainesboro	-	-	-	-	-	-	-	-
Gallatin	-	-	-	-	28,226	54,157	87,677	113,421
Galloway	-	-	-	-	-	-	-	-
Garland	-	-	-	-	-	-	-	-
Gates	-	-	-	-	-	-	-	-
Gatlinburg	-	-	-	-	-	-	-	-
Germantown	-	-	-	-	5,043	9,947	16,103	20,832
Gibson	-	-	-	-	-	-	-	-
Gilt Edge	-	-	-	-	-	-	-	-
Gleason	-	-	-	-	-	-	-	-
Goodlettsville	-	-	-	-	4,037	8,801	14,248	18,431
Gordonsville	-	-	-	-	-	-	-	-
Grand Junction	-	-	-	-	-	-	-	-
Graysville	19,307	25,997	34,558	34,010	-	-	-	8,047
Greenback	-	-	-	-	-	-	-	-
Greenbrier	-	-	-	-	-	-	-	-
Greeneville	-	-	-	-	-	-	-	-
Greenfield	-	-	-	-	-	-	-	-
Gruetti-Laager	-	-	-	-	-	-	-	-
Guys	-	-	-	-	-	-	-	-
Halls	-	-	-	-	-	-	-	-

City	2025-26	2024-25	2023-24	2022-23	2021-22	2020-21	2019-20	2018-19
Harriman	107,579	104,623	31,896	31,390	-	-	-	13,819
Harrogate	-	-	-	-	-	-	-	-
Hartsville	-	-	-	-	-	-	-	-
Henderson	-	-	-	-	-	-	-	-
Hendersonville	-	-	-	-	39,230	80,705	130,657	169,021
Henning	-	-	-	-	-	-	-	-
Henry	11,682	10,487	-	-	-	-	-	-
Hickory Valley	-	-	-	-	-	-	-	-
Hohenwald	-	-	-	-	-	-	-	-
Hollow Rock	-	-	-	-	-	-	-	-
Hornbeak	-	-	-	-	-	-	-	-
Hornsby	-	-	-	-	-	-	-	-
Humboldt	-	-	-	-	-	-	-	-
Huntingdon	-	-	-	-	-	-	-	-
Huntland	-	-	-	-	-	-	-	-
Huntsville	-	-	-	-	-	-	-	-
Jacksboro	-	-	-	-	-	-	-	-
Jackson	-	-	-	-	-	-	-	-
Jamestown	-	-	-	-	-	-	-	-
Jasper	-	-	-	-	-	-	-	-
Jefferson City	-	-	-	-	-	-	-	-
Jellico	-	-	-	-	-	-	-	-
Johnson City	96,097	172,533	255,934	335,837	286,531	283,447	305,921	296,811
Jonesborough	8,090	14,525	21,547	28,274	24,123	23,155	24,991	24,247
Kenton	-	-	-	-	-	-	-	-
Kimball	-	-	-	-	-	-	-	-
Kingsport	62,831	112,808	167,339	219,582	187,344	179,865	194,127	188,346
Kingston	111,304	108,245	32,226	31,715	-	-	-	12,913
Kingston Springs	-	-	-	-	-	-	-	-
Knoxville	-	-	-	-	-	-	-	-
Lafayette	-	-	-	-	-	-	-	-
Lafollette	-	-	-	-	-	-	-	-
Lagrange	-	-	-	-	-	-	-	-
Lakeland	-	-	-	-	1,696	3,082	4,989	6,454
Lakesite	-	-	-	-	-	-	-	-

City	2025-26	2024-25	2023-24	2022-23	2021-22	2020-21	2019-20	2018-19
La Vergne	-	-	-	-	-	-	-	-
Lawrenceburg	-	-	-	-	-	-	-	-
Lebanon	-	-	-	-	-	-	-	-
Lenoir City	-	-	-	-	-	-	-	-
Lewisburg	-	-	-	-	-	-	-	-
Lexington	-	-	-	-	-	-	-	-
Liberty	-	-	-	-	-	-	-	-
Linden	-	-	-	-	-	-	-	-
Livingston	-	-	-	-	-	-	-	-
Lobelville	-	-	-	-	-	-	-	-
Lookout Mountain	-	-	-	-	-	-	-	-
Loretto	-	-	-	-	-	-	-	-
Loudon	-	-	-	-	-	-	-	-
Louisville	-	-	-	-	-	-	-	-
Luttrell	-	-	-	-	-	-	-	-
Lynchburg	-	-	-	-	-	-	-	-
Lynnville	-	-	-	-	-	-	-	-
Madisonville	9,809	13,208	17,416	17,140	-	-	-	2
Manchester	-	-	-	-	-	-	-	-
Martin	-	-	-	-	-	-	-	-
Maryville	-	-	-	-	-	-	-	-
Mason	-	-	-	-	-	-	-	-
Maury City	-	-	-	-	-	-	-	-
Maynardville	-	-	-	-	-	-	-	-
McEwen	70,510	63,297	-	-	-	-	-	-
McKenzie	1,781	1,599	-	-	-	-	-	-
McLemoresville	-	-	-	-	-	-	-	-
McMinnville	-	-	-	-	-	-	-	-
Medina	-	-	-	-	-	-	-	-
Medon	-	-	-	-	-	-	-	-
Memphis	-	-	-	77,246	160,370	259,628	335,863	-
Michie	-	-	-	-	-	-	-	-
Middleton	-	-	-	-	-	-	-	-
Milan	-	-	-	-	-	-	-	-
Milledgeville	-	-	-	-	-	-	-	-

City	2025-26	2024-25	2023-24	2022-23	2021-22	2020-21	2019-20	2018-19
Millersville	-	-	-	-	3,145	7,819	12,658	16,375
Millington	-	-	-	-	1,291	2,760	4,468	5,780
Minor Hill	-	-	-	-	-	-	-	-
Mitchellville	-	-	-	-	104	297	481	622
Monteagle	-	-	-	-	-	-	-	-
Monterey	-	-	-	-	-	-	-	-
Morrison	-	-	-	-	-	-	-	-
Morristown	-	-	-	-	-	-	-	-
Moscow	-	-	-	-	-	-	-	-
Mosheim	-	-	-	-	-	-	-	-
Mount Carmel	-	-	-	-	-	-	-	-
Mount Juliet	-	-	-	-	-	-	-	-
Mount Pleasant	-	-	-	-	-	-	-	-
Mountain City	-	-	-	-	-	-	-	-
Munford	-	-	-	-	-	-	-	-
Murfreesboro	-	-	-	-	-	-	-	-
Nashville	-	-	-	-	-	-	-	-
New Hope	-	-	-	-	-	-	-	-
New Johnsonville	77,419	69,499	-	-	-	-	-	-
New Market	-	-	-	-	-	-	-	-
New Tazewell	-	-	-	-	-	-	-	-
Newbern	-	-	-	-	-	-	-	-
Newport	-	-	-	-	-	-	-	-
Niota	1,501	2,021	2,665	2,623	-	-	-	0.35
Nolensville	-	-	-	-	-	-	-	-
Normandy	-	-	-	-	-	-	-	-
Norris	-	-	-	-	-	-	-	-
Oak Hill	-	-	-	-	-	-	-	-
Oak Ridge	66,607	64,777	19,748	19,435	-	-	-	63,827
Oakdale	-	-	-	-	-	-	-	-
Oakland	-	-	-	-	-	-	-	-
Obion	-	-	-	-	-	-	-	-
Oliver Springs	16,780	16,318	4,975	4,896	-	-	-	7,031
Oneida	-	-	-	-	-	-	-	-
Orinda	-	-	-	-	-	-	-	-

City	2025-26	2024-25	2023-24	2022-23	2021-22	2020-21	2019-20	2018-19
Orme	-	-	-	-	-	-	-	-
Palmer	-	-	-	-	-	-	-	-
Paris	270,210	242,569	-	-	-	-	-	-
Parkers Crossroads	-	-	-	-	-	-	-	-
Parrottsville	-	-	-	-	-	-	-	-
Parsons	-	-	-	-	-	-	-	-
Pegram	-	-	-	-	-	-	-	-
Petersburg	-	-	-	-	-	-	-	-
Philadelphia	-	-	-	-	-	-	-	-
Pigeon Forge	-	-	-	-	-	-	-	-
Pikeville	-	-	-	-	-	-	-	-
Piperton	-	-	-	-	-	-	-	-
Pittman Center	-	-	-	-	-	-	-	-
Plainview	-	-	-	-	-	-	-	-
Pleasant Hill	-	-	-	-	-	-	-	-
Pleasant View	-	-	-	-	-	-	-	-
Portland	-	-	-	8,330	17,945	29,053	37,583	-
Powells Crossroads	-	-	-	-	-	-	-	-
Pulaski	-	-	-	-	-	-	-	-
Puryear	18,492	16,601	-	-	-	-	-	-
Ramer	-	-	-	-	-	-	-	-
Red Bank	-	-	-	-	-	-	-	-
Red Boiling Springs	-	-	-	-	-	-	-	-
Ridgely	-	-	-	-	-	-	-	-
Ridgeside	-	-	-	-	-	-	-	-
Ridgetop	-	-	-	-	-	-	-	-
Ripley	-	-	-	-	-	-	-	-
Rives	-	-	-	-	-	-	-	-
Rockford	-	-	-	-	-	-	-	-
Rockwood	99,400	96,668	29,470	29,003	-	-	12,104	-
Rocky Top	-	-	-	-	-	-	-	-
Rogersville	-	-	-	-	-	-	-	-
Rossville	-	-	-	-	-	-	-	-
Rutherford	-	-	-	-	-	-	-	-
Rutledge	-	-	-	-	-	-	-	-

City	2025-26	2024-25	2023-24	2022-23	2021-22	2020-21	2019-20	2018-19
Saltito	-	-	-	-	-	-	-	-
Samburg	-	-	-	-	-	-	-	-
Sardis	-	-	-	-	-	-	-	-
Saulsbery	-	-	-	-	-	-	-	-
Savannah	-	-	-	-	-	-	-	-
Scotts Hill	-	-	-	-	-	-	-	-
Selmer	-	-	-	-	-	-	-	-
Sevierville	-	-	-	-	-	-	-	-
Sharon	-	-	-	-	-	-	-	-
Shelbyville	-	-	-	-	-	-	-	-
Signal Mountain	-	-	-	-	-	-	-	-
Silerton	-	-	-	-	-	-	-	-
Slayden	-	-	-	-	-	-	-	-
Smithville	-	-	-	-	-	-	-	-
Smyrna	-	-	-	-	-	-	-	-
Sneedville	-	-	-	-	-	-	-	-
Soddy Daisy	-	-	-	-	-	-	-	-
Somerville	-	-	-	-	-	-	-	-
South Carthage	-	-	-	-	-	-	-	-
South Fulton	-	-	-	-	-	-	-	-
South Pittsburg	-	-	-	-	-	-	-	-
Sparta	-	-	-	-	-	-	-	-
Spencer	-	-	-	-	-	-	-	-
Spring City	25,580	34,445	45,787	45,062	-	-	-	10,613
Spring Hill	-	-	-	-	-	-	-	-
Springfield	-	-	-	-	-	-	-	-
St. Joseph	-	-	-	-	-	-	-	-
Stanton	-	-	-	-	-	-	-	-
Stantonville	-	-	-	-	-	-	-	-
Sunbright	-	-	-	-	-	-	-	-
Surgoinsville	-	-	-	-	-	-	-	-
Sweetwater	12,064	16,245	21,420	21,081	-	-	-	3
Tazewell	-	-	-	-	-	-	-	-
Tellico Plains	1,456	1,961	2,586	2,545	-	-	-	0.44
Tennessee Ridge	140,990	126,568	-	-	-	-	-	-

City	2025-26	2024-25	2023-24	2022-23	2021-22	2020-21	2019-20	2018-19
Thompson's Station	-	-	-	-	-	-	-	-
Three Way	-	-	-	-	-	-	-	-
Tiptonville	-	-	-	-	-	-	-	-
Toone	-	-	-	-	-	-	-	-
Townsend	-	-	-	-	-	-	-	-
Tracy City	-	-	-	-	-	-	-	-
Trenton	-	-	-	-	-	-	-	-
Trezevant	-	-	-	-	-	-	-	-
Trimble	-	-	-	-	-	-	-	-
Troy	-	-	-	-	-	-	-	-
Tullahoma	-	-	-	-	-	-	-	-
Tusculum	-	-	-	-	-	-	-	-
Unicoi	-	-	-	-	-	-	-	-
Union City	-	-	-	-	-	-	-	-
Vanleer	-	-	-	-	-	-	-	-
Viola	-	-	-	-	-	-	-	-
Vonore	3,008	4,051	5,341	5,257	-	-	-	1
Walden	-	-	-	-	-	-	-	-
Wartburg	-	-	-	-	-	-	-	-
Wartrace	-	-	-	-	-	-	-	-
Watauga	-	-	-	-	-	399	430	418
Watertown	-	-	-	-	-	-	-	-
Waverly	184,406	165,542	-	-	-	-	-	-
Waynesboro	-	-	-	-	-	-	-	-
Westmoreland	-	-	-	-	1,727	3,466	5,611	7,258
White Bluff	-	-	-	-	-	-	-	-
White House	-	-	-	-	4,314	9,140	14,797	19,142
White Pine	-	-	-	-	-	-	-	-
Whiteville	-	-	-	-	-	-	-	-
Whitwell	-	-	-	-	-	-	-	-
Williston	-	-	-	-	-	-	-	-
Winchester	-	-	-	-	-	-	-	-
Winfield	-	-	-	-	-	-	-	-
Woodbury	-	-	-	-	-	-	-	-
Woodland Mills	-	-	-	-	-	-	-	-

City	2025-26	2024-25	2023-24	2022-23	2021-22	2020-21	2019-20	2018-19
Yorkville	-	-	-	-	-	-	-	-
Total	\$2,174,193	\$2,284,396	\$1,130,023	\$1,288,198	\$790,411	\$979,554	\$1,266,098	\$1,625,188

Source: Tennessee Department of Revenue.

Note: For cities that cross multiple counties, individual amounts calculated under the state distribution formula for portion of city in each county have been combined by TACIR staff and are reported in appendix as a single total.

## **Appendix G: TVA 2019 Integrated Resource Plan Recommendations by Resource Type**

Coal: Continue with announced plans to retire Paradise in 2020 and Bull Run in 2023. Evaluate retirements of up to 2,200 MW of additional coal capacity if cost-effective.

Hydro: All portfolios reflect continued investment in the hydro fleet to maintain capacity. Consider additional hydro capacity where feasible.

Energy Efficiency: Achieve savings of up to 1,800 MW by 2028 and up to 2,200 MW by 2038. Work with our local power company partners to expand programs for low-income residents and refine program designs and delivery mechanisms with the goal of lowering total cost.

Demand Response: Add up to 500 MW of demand response by 2038 depending on availability and cost of the resource.

Nuclear: Pursue option for second license renewal of Browns Ferry for an additional 20 years. Continue to evaluate emerging nuclear technologies including Small Modular Reactors as part of technology innovation efforts.

Wind: Existing wind contracts expire in the early 2030s. Consider the addition of up to 1,800 MW of wind by 2028 and up to 4,200 MW by 2038 if cost effective.

Storage: Add up to 2,400 MW of storage by 2028 and up to 5,300 MW by 2038. Additions may be a combination of utility and distributed scale. The trajectory and timing of additions will be highly dependent on the evolution of storage technologies.

Gas Combustion Turbine: Evaluate retirements of up to 2,000 MW of existing combustion turbines if cost effective. Add up to 5,200 MW of combustion turbines by 2028 and up to 8,600 MW by 2038 if a high level of load growth materializes. Future CT needs are driven by demand for electricity, solar penetration, and evolution of other peaking technologies.

Gas Combined Cycle: Add between 800 and 5,700 MW of combined cycle by 2028 and up to 9,800 MW by 2038 if a high level of load growth materializes. Future CC needs are driven by demand for electricity and gas prices, as well as by solar penetration that tends to drive CT instead of CC additions.

Solar: Add between 1,500 and 8,000 MW of solar by 2028 and up to 14,000 MW by 2038. Additions may be a combination of utility and distributed scale. Future solar needs are driven by pricing, customer demand, and demand for electricity.

Source: Tennessee Valley Authority 2019c, sections 9-3 and 9-4.