



Education Savings Account Program

Amber Green

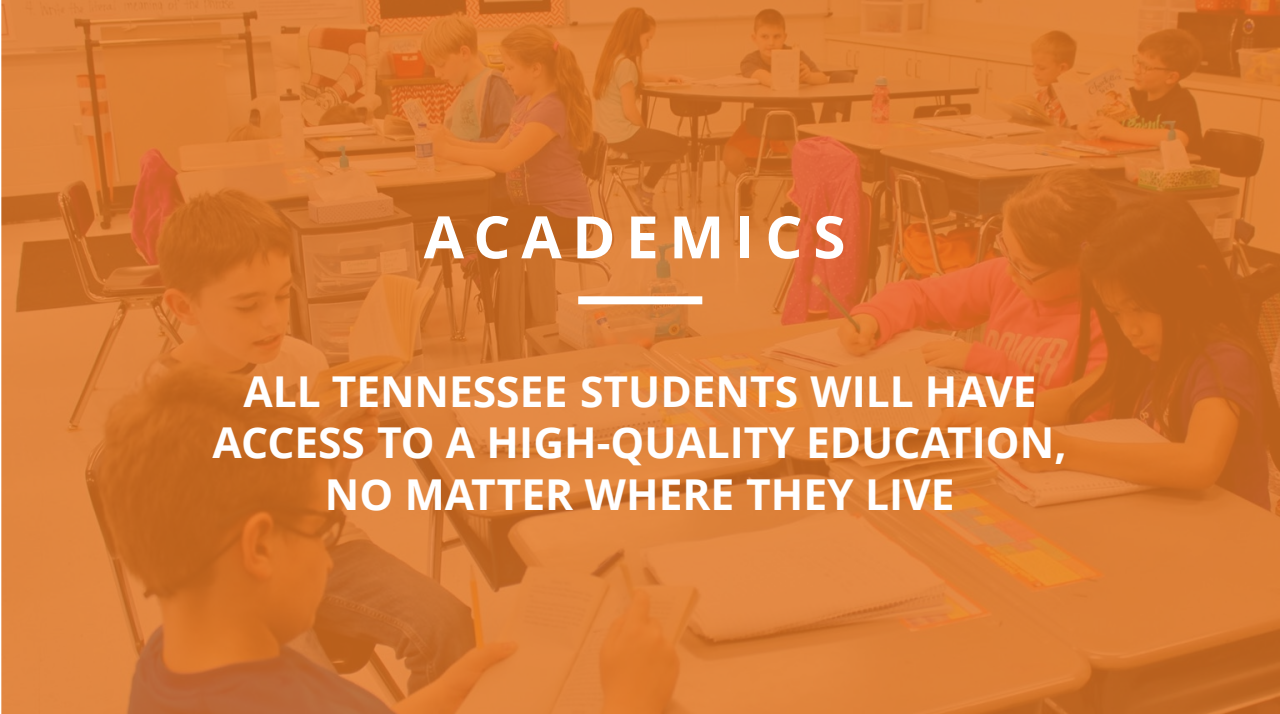
Director of ESA Program – Division of Choice





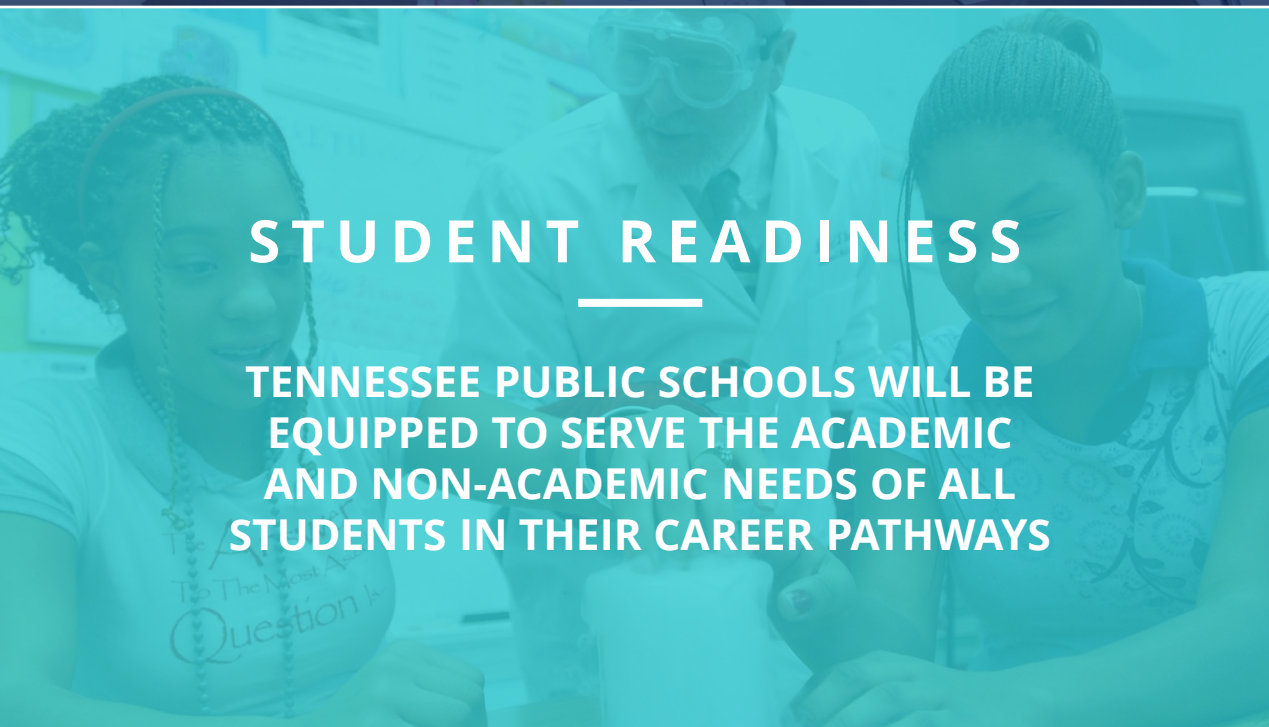
BEST FOR
ALL

We will set all students on a path to success.



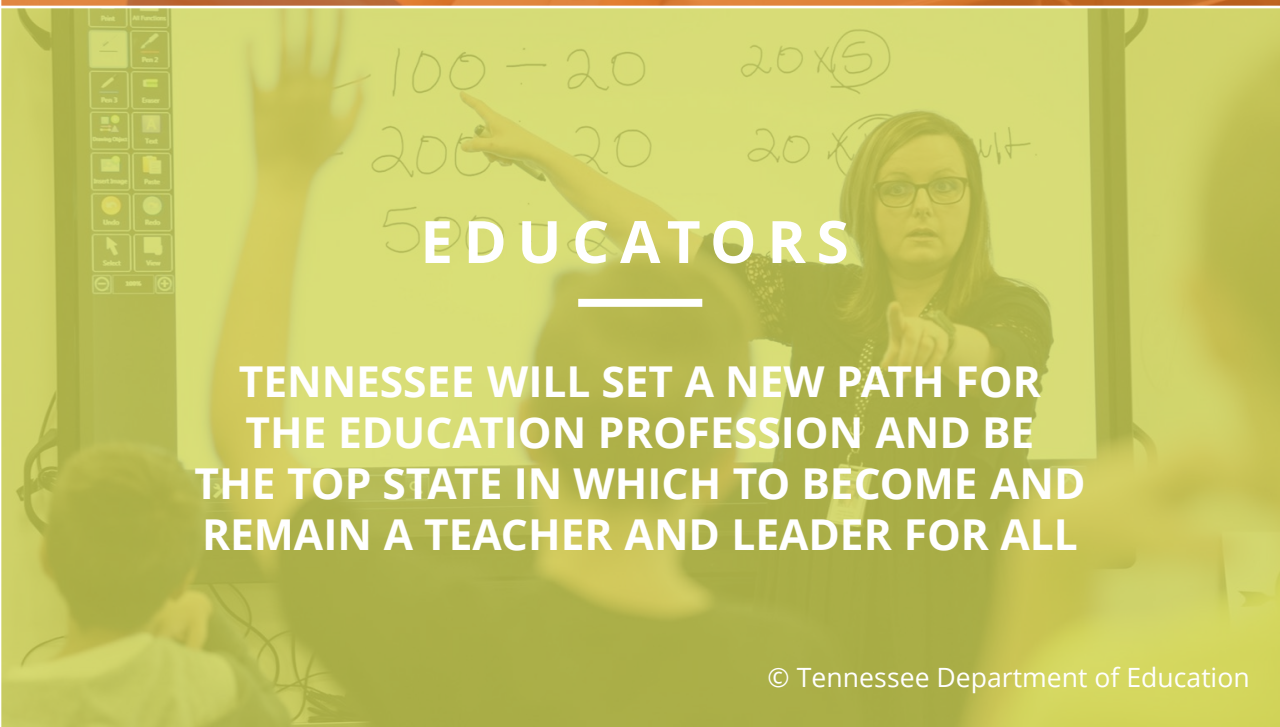
ACADEMICS

**ALL TENNESSEE STUDENTS WILL HAVE
ACCESS TO A HIGH-QUALITY EDUCATION,
NO MATTER WHERE THEY LIVE**



STUDENT READINESS

**TENNESSEE PUBLIC SCHOOLS WILL BE
EQUIPPED TO SERVE THE ACADEMIC
AND NON-ACADEMIC NEEDS OF ALL
STUDENTS IN THEIR CAREER PATHWAYS**



EDUCATORS

**TENNESSEE WILL SET A NEW PATH FOR
THE EDUCATION PROFESSION AND BE
THE TOP STATE IN WHICH TO BECOME AND
REMAIN A TEACHER AND LEADER FOR ALL**



Agenda

- ESA Brief History
- Program Data
- Trends
- Successes
- Challenges
- Looking Ahead



A Brief ESA History

- Provides additional school choices for eligible students
- Provides funding for approved educational expenses, including tuition, fees, and books at participating non-public schools
- Following passage of Chapter 328 of the Public Acts of 2023, the program's geographic availability expanded to include students zoned to a school in Hamilton County Schools.
- For the 2023-24 school year, approved students in the program had access to \$9,069.80 in Nashville and Memphis and \$8,943.67 in Hamilton County.



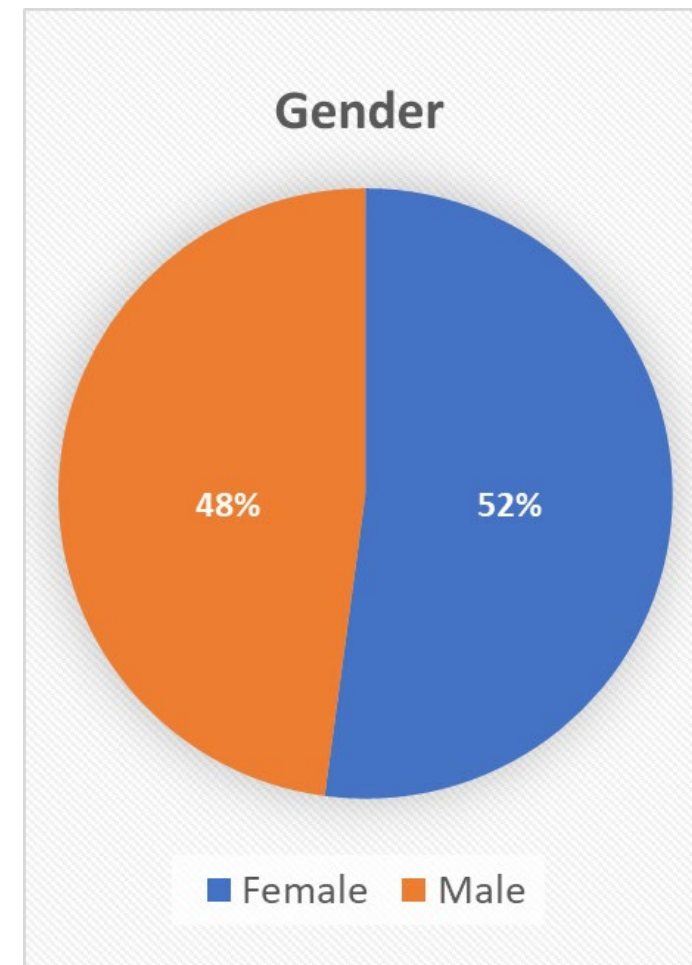
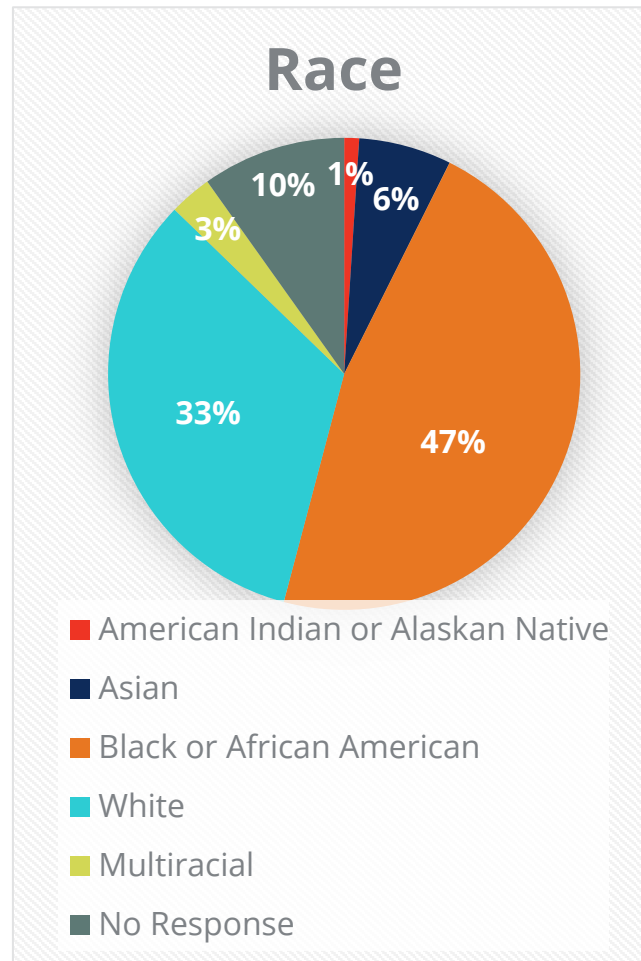
ESA Program Data

ESA Program Data

	2022-23 School Year	2023-24 School Year
Student applications received	1,333	3,631
Student applications approved	707	2,738
Enrollments	452	2,078
Participating non-public schools	44	81

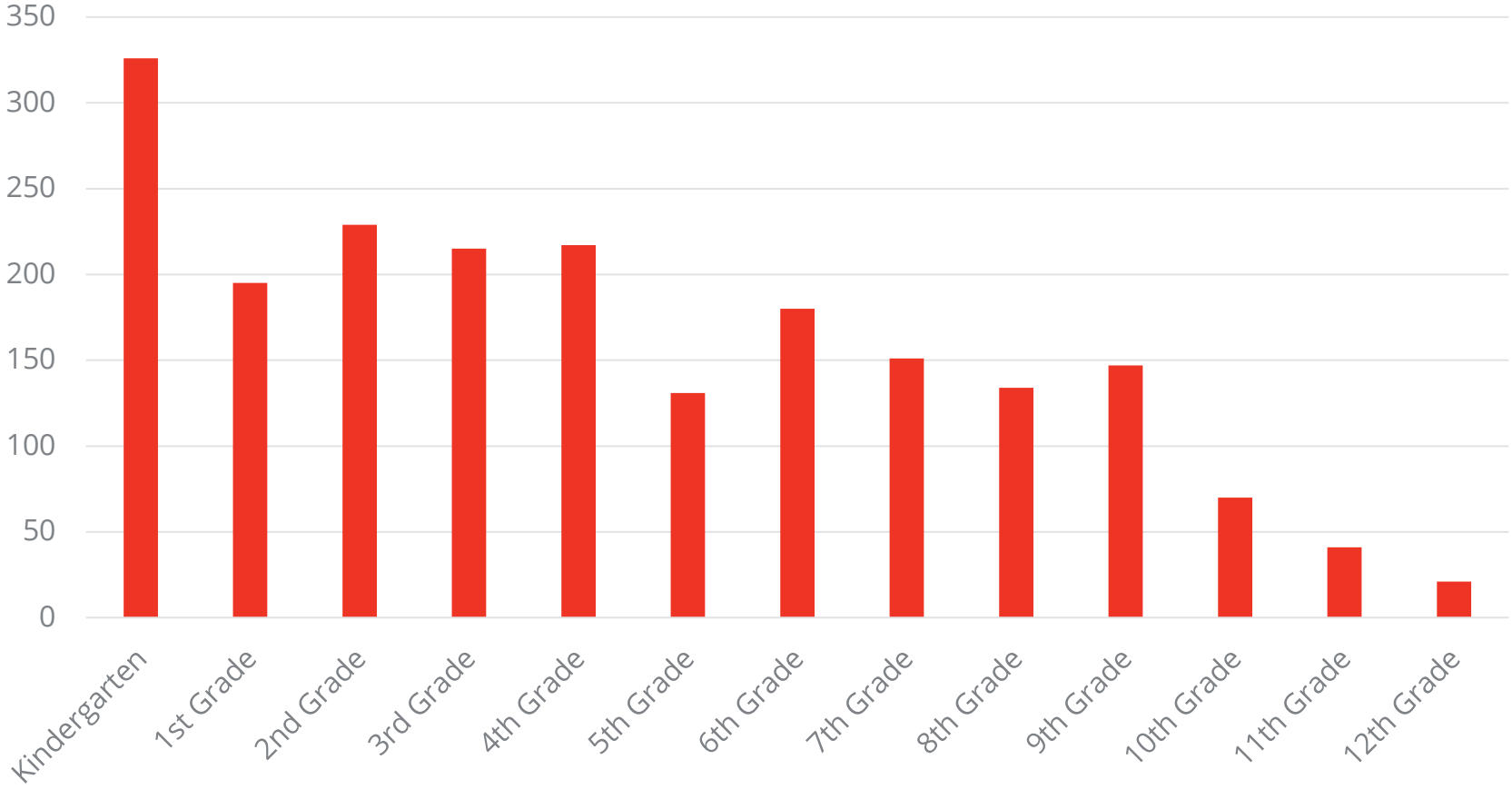


Enrolled Student Demographic Data: 2023-24



Student Demographic Data: 2023-24

Enrolled Students



ESA Current Fiscal Data

Fiscal Year 2023	Awards
Memphis Shelby County Schools	\$2,000,272.14
Metro Nashville Public Schools	\$1,327,623.10
Achievement School District- MSCS	\$36,864.00
TN Public Charter Commission- MSCS	\$40,960.00
Achievement School District and TN Public Charter Commission- MNPS	\$0
Total	\$3,405,719.24
Fiscal Year 2024	Current Awards
Memphis Shelby County Schools	\$9,611,427.97
Metro Nashville Public Schools	\$6,066,113.70
Achievement School District- MSCS	\$327,174.08
Achievement School District- MNPS	\$0
Hamilton County Schools	\$2,115,570.16
Total	\$18,120,285.91



Data Trends for 2022-23 & 2023-24

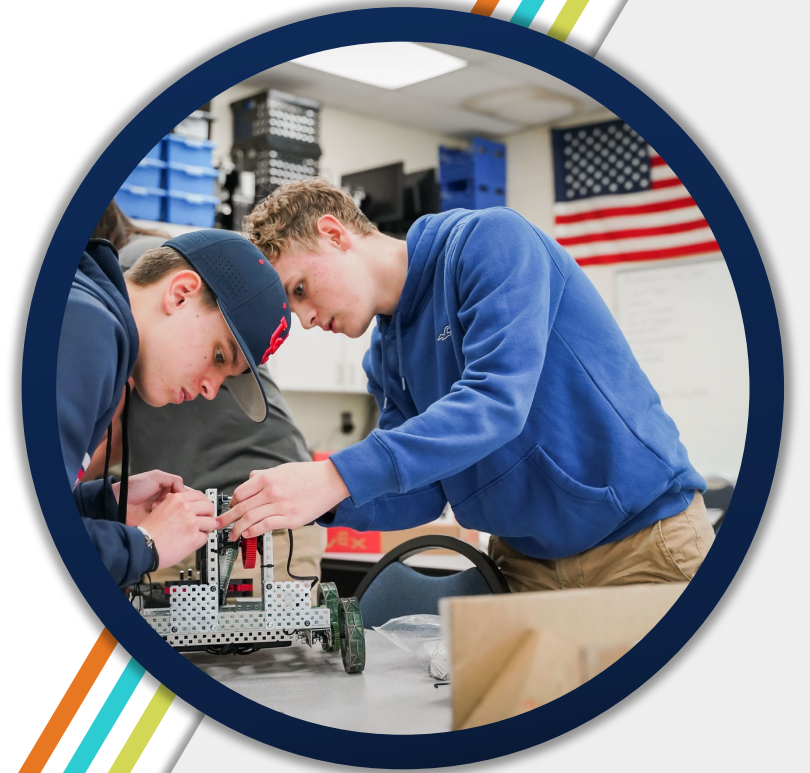
- Student enrollment rate increased from 64% in the 2022-23 school year to 75% in the 2023-24 school year.
- Student withdrawals are decreasing
 - Out of 2,112 ESA students 98.1% remain in the program
 - FY23 – 3.5%
 - FY24 – 1.9%
- 96% of funds approved for tuition expenses in FY23 and FY24



Successes

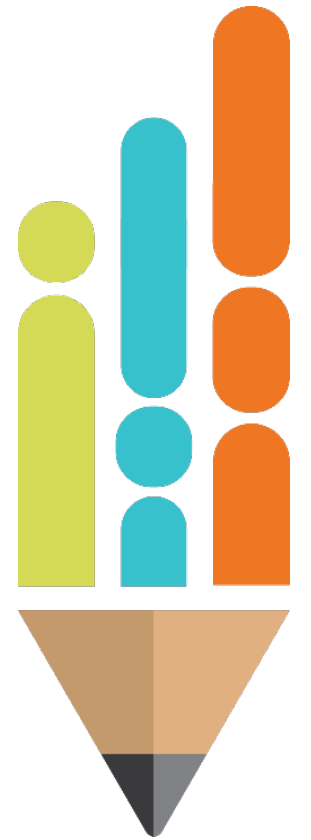
Account Holder Feedback

- 99% of account holders strongly agreed or agreed that they are satisfied with the ESA Program overall in our Parent Survey.
- Parents shared the following feedback regarding the ESA program:
 - *“Thank you so much. It’s like a dream come true for my child. This would not be possible without ESA.”*
 - *“This grant is a gift! Thank you! The school we are zoned for is not a good option to meet the needs of our foster son, and this school has been amazing.”*



2023-24 School Year Successes

- E-wallet portal access for families, participating schools, and providers
 - Easy access to ESA funds
 - Better flow of funds from student accounts to schools and providers
 - Simple to view available funds and expenses per student
 - 26 approved providers added to the Service Provider Marketplace
 - Reporting system
- Participating schools receive payment within 10 business days of receipt



Challenges



Challenges

- Once a student is approved, the next step is for the student to enroll in a participating school, which can be difficult if the student does not have a participating school in mind.
- Some participating schools have limited seats in grade levels that are in high demand.



Looking Ahead



Community Involvement

- The department is working closely with school leaders in Memphis, Nashville, Chattanooga, and surrounding areas to improve the program, meet the needs of schools, and assist with communication and program implementation in schools.
- We look forward to expanding involvement in additional roundtable opportunities, listening sessions, and meetings with school and regional leaders to continue to implement best practices for all stakeholders.





Thank You!

Questions?

Permission is granted to use and copy these materials for non-commercial educational purposes with attribution credit to the "Tennessee Department of Education". If you wish to use these materials for reasons other than non-commercial educational purposes, please contact the Office of General Counsel at (615) 741-2921 or Joanna Collins (Joanna.Collins@tn.gov).



Program Updates: Individualized Education Accounts (IEAs)

Phara Williams

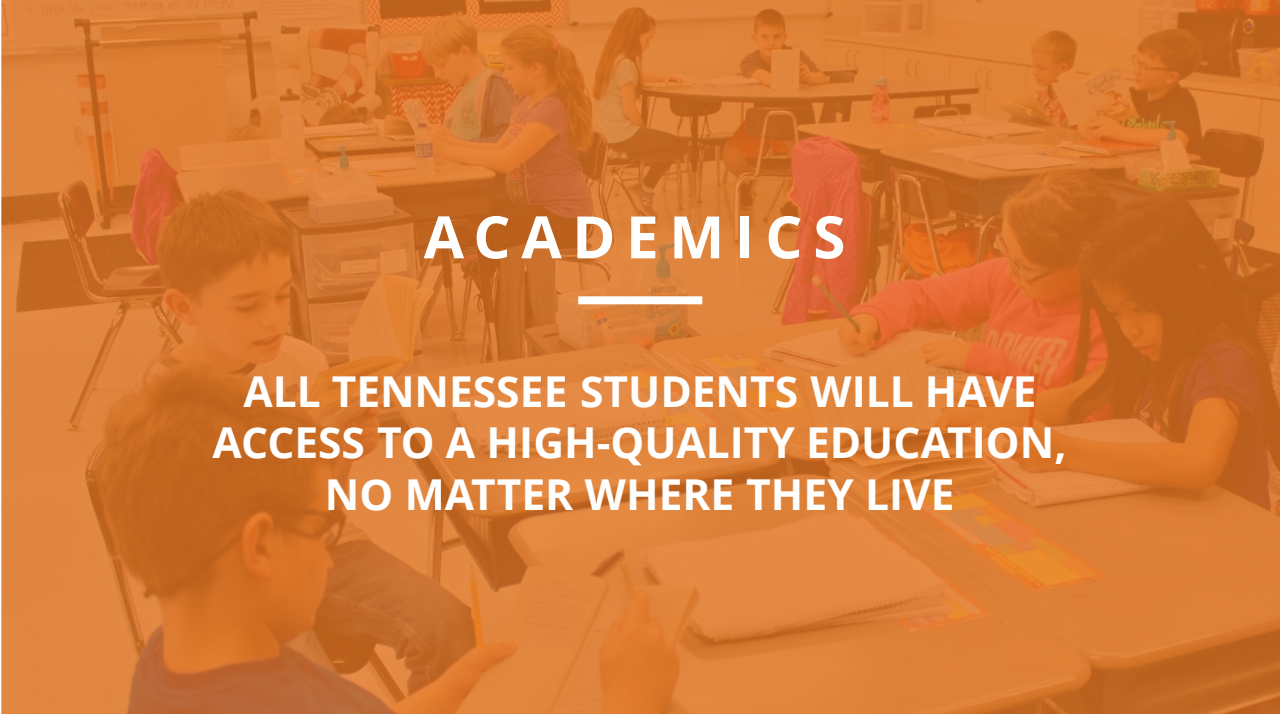
Director IEA Program | Division of Choice





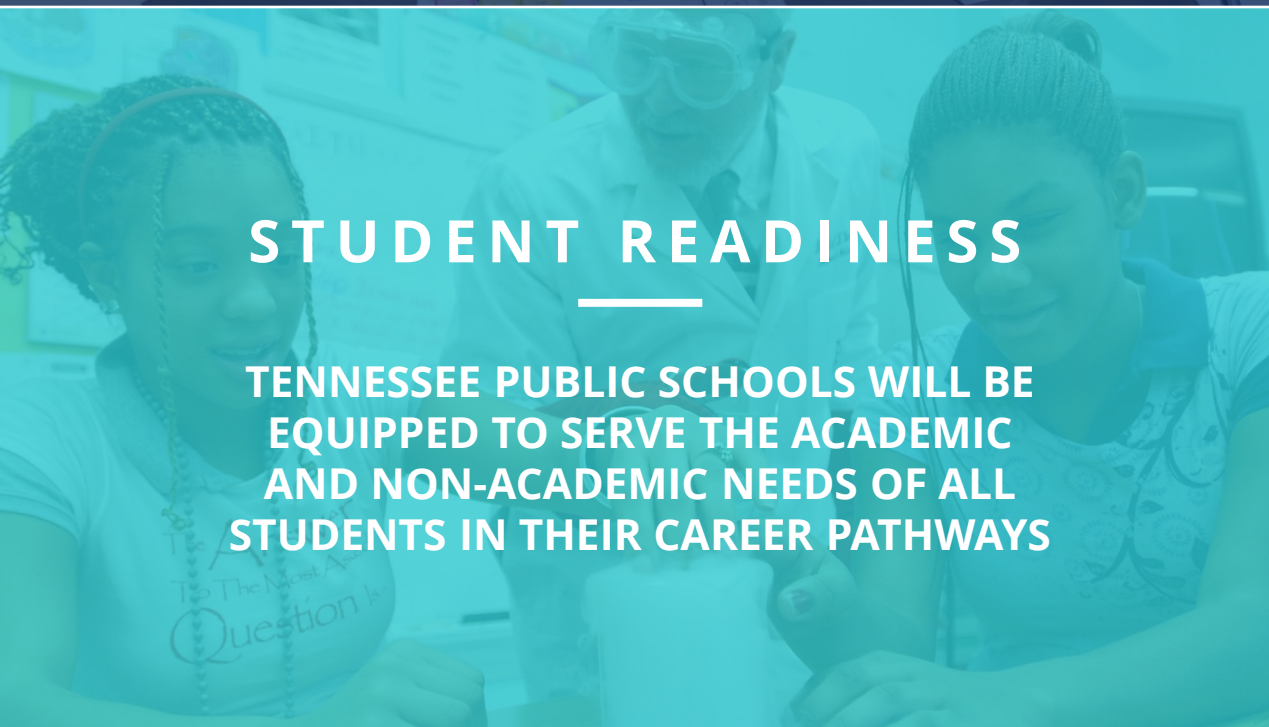
BEST FOR
ALL

We will set all students on a path to success.



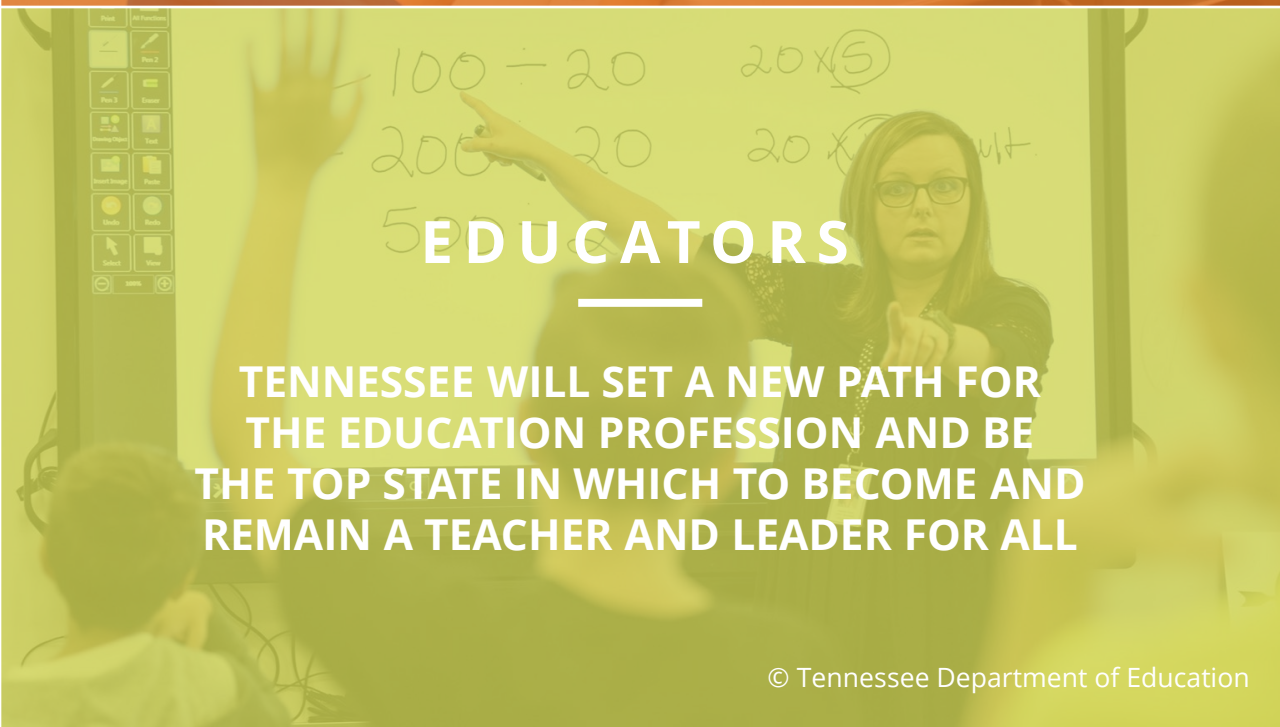
ACADEMICS

**ALL TENNESSEE STUDENTS WILL HAVE
ACCESS TO A HIGH-QUALITY EDUCATION,
NO MATTER WHERE THEY LIVE**



STUDENT READINESS

**TENNESSEE PUBLIC SCHOOLS WILL BE
EQUIPPED TO SERVE THE ACADEMIC
AND NON-ACADEMIC NEEDS OF ALL
STUDENTS IN THEIR CAREER PATHWAYS**



EDUCATORS

**TENNESSEE WILL SET A NEW PATH FOR
THE EDUCATION PROFESSION AND BE
THE TOP STATE IN WHICH TO BECOME AND
REMAIN A TEACHER AND LEADER FOR ALL**

Program Background

The Individualized Education Act, Tennessee Code Annotated (T.C.A.) § 49-10-1401 et seq., was signed into law by the Governor on May 18, 2015.

The Tennessee State Board of Education (SBE) has approved rules, Chapter 0520-01-11, and the department has developed implementation procedures for the IEA Program.

The first individualized education accounts (IEAs) were awarded in January 2017.

Eligibility Requirements

The student is a Tennessee resident;
and

The student will be in grades K-12 at the time of IEA Program enrollment;
and

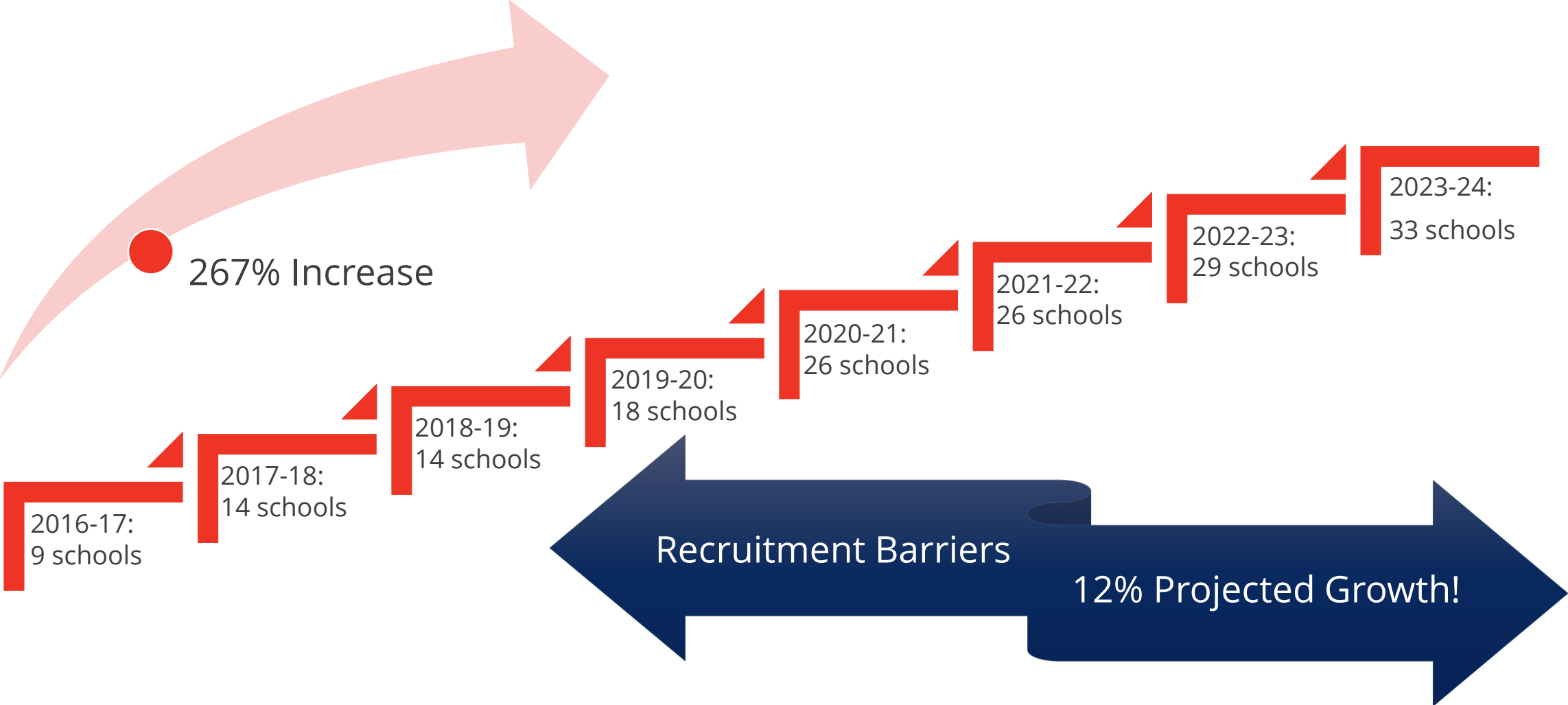
The student has an active Individualized Education Program (IEP) being implemented at the time of request for participation in the program with one of the ten approved disability categories listed as primary or secondary on that IEP

(autism, deaf-blindness, developmental delay, hearing impairments, intellectual disability, multiple disabilities, orthopedic impairments, specific learning disabilities, traumatic brain injury, **or** visual impairments);
and

The student meets *at least one* of the following requirements:

- Previously enrolled in and attended a Tennessee public school for the one full school year immediately preceding the school year in which the student would receive the IEA; **or**
- Entering kindergarten for the first time; **or**
- Moved to Tennessee less than one year prior to the date of enrollment in the IEA Program.

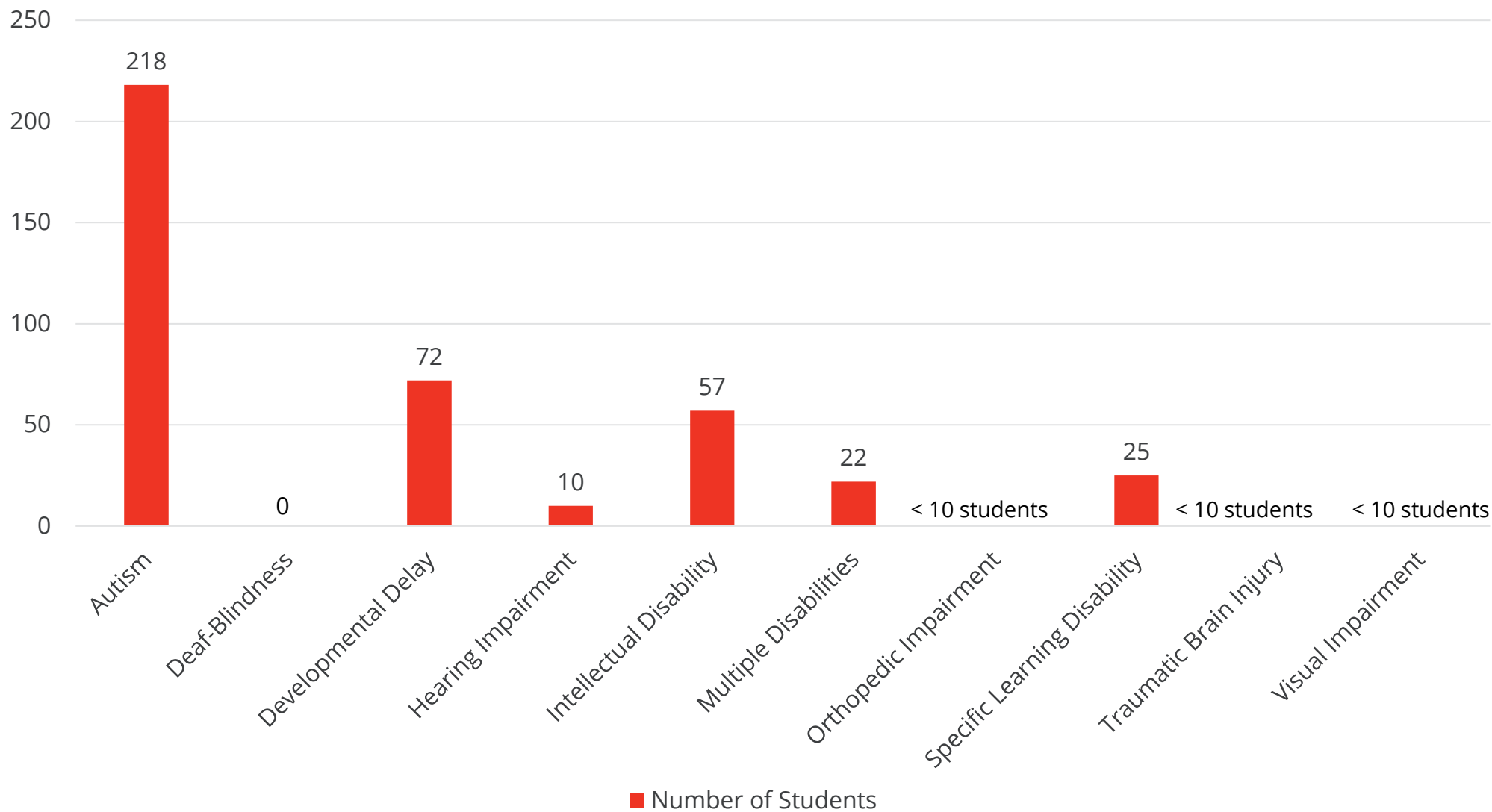
Participating Non-public Schools



Student Enrollment

Number of IEA Participating Students		Percentage Change
2016-17	38	---
2017-18	87	129% increase
2018-19	137	57% increase
2019-20	166	21% increase
2020-21	297	79% increase
2021-22	292	2% decrease
2022-23	338	16% increase
2023-24	423	25% increase

Disability Categories



IEA Participation Rate

	SWDs Eligible for an IEA (TN SWDs ages K-12)	# of IEA Participating Students	IEA Participation Rate
2016-17	20,284	38	.19%
2017-18	21,393	87	.41%
2018-19	32,855	137	.42%
2019-20	34,306	166	.48%
2020-21	34,027	297	.87%
2021-22	35,364	292	.83%
2022-23	37,662	338	.90%

Key Points Summary



Student enrollment in the IEA Program has increased by just over 1000 percent over the course of its eight-year existence.



Over 250 percent more non-public schools participate with the IEA Program now than at the start of the program.



The participation rate in the IEA Program among Students with Disabilities (SWDs) eligible for an IEA has risen by over almost 500 percent since 2016-17.



The majority of students with an IEA have autism as a qualifying disability.

INDIVIDUALIZED EDUCATION ACCOUNT PROGRAM



TENNESSEE DEPARTMENT OF EDUCATION

Questions?

IEA.Questions@tn.gov

(615) 253-3781

Phara.C.Williams@tn.gov

"Permission is granted to use and copy these materials for non-commercial educational purposes with attribution credit to the "Tennessee Department of Education". If you wish to use these materials for reasons other than non-commercial educational purposes, please contact Joanna Collins (Joanna.Collins@tn.gov)."

