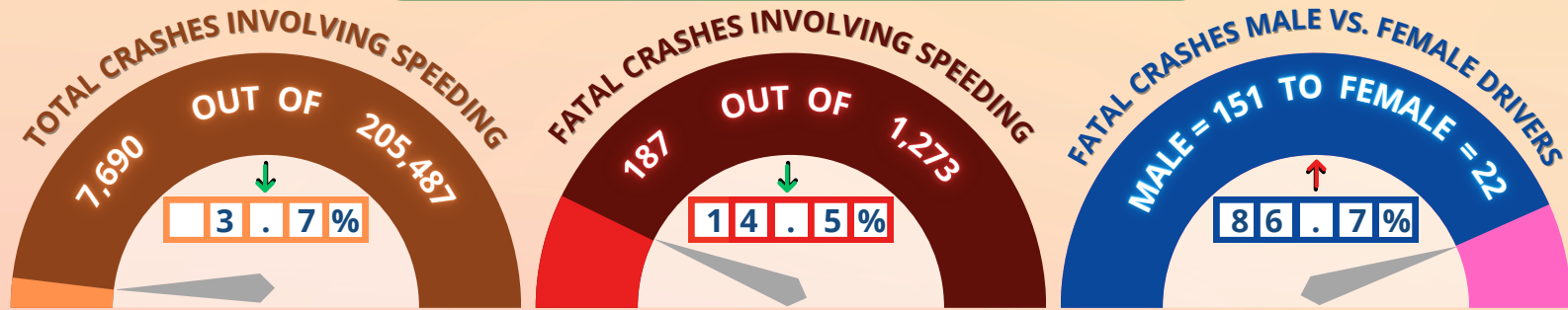




# SPEEDING




- There were **7,690** crashes involving speeding.
- Speeding crashes were **4.4x** as likely to cause a fatality than non-speeding crashes.
- **79%** of speeding crashes were not on an interstate.
- Drunk drivers were **4.2x** as likely to speed than sober drivers.

**2 IN 9**  
SPEEDING RELATED  
CRASHES OCCURRED  
IN DAYLIGHT IN  
THE RAIN.



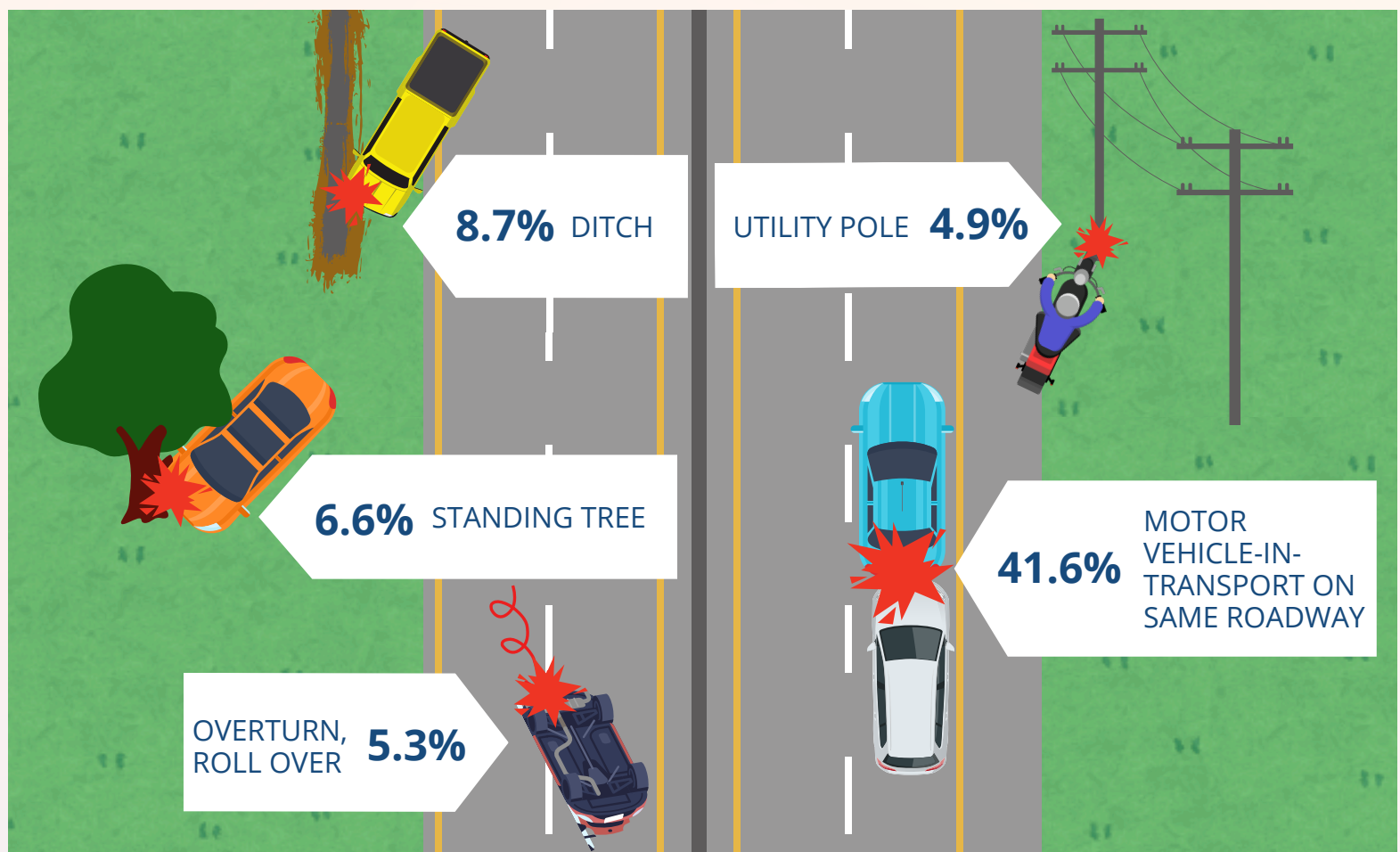
**25**

SPEEDING DRIVERS  
WERE **2X**  AS  
LIKELY TO BE  
UNDER THE AGE  
OF 25.



# SPEEDING

## TOP 5 FIRST HARMFUL EVENTS WHERE SPEEDING WAS A FACTOR

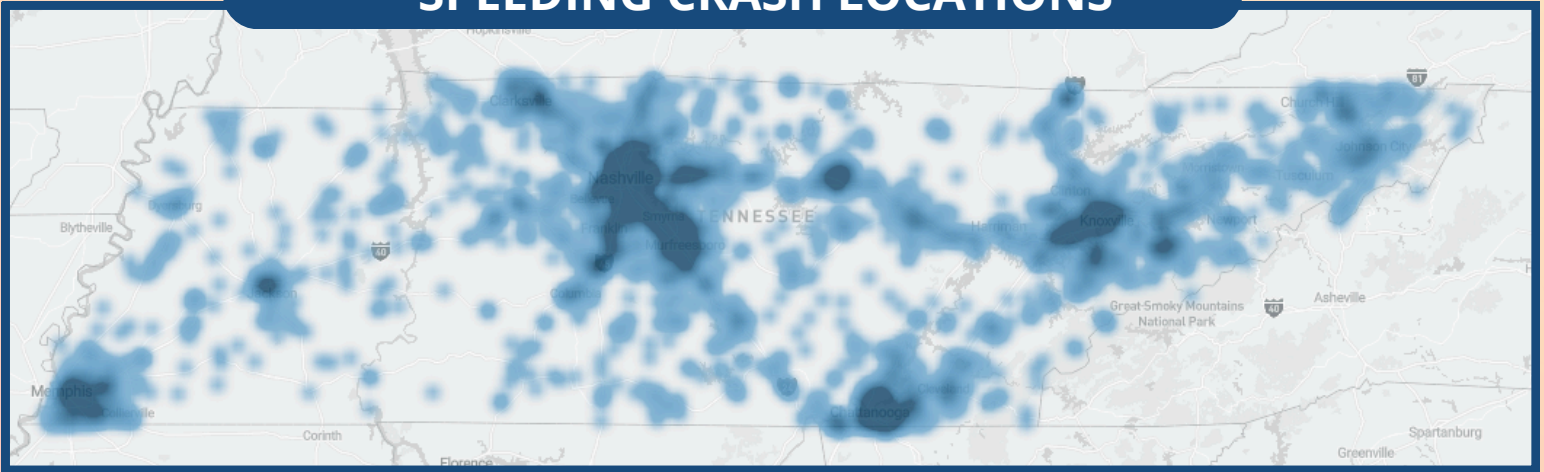


Crashes at night were **1.4x** as likely to involve a speeding driver as daytime crashes.



# SPEEDING

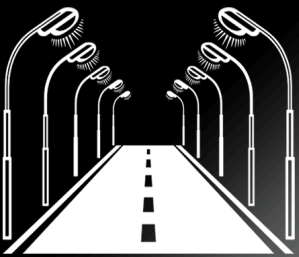
## SPEEDING CRASH LOCATIONS



MAP COURTESY OF TDOT/AASHTOWARE

\*SPEEDING CRASH LOCATIONS ARE WHERE DRIVER ACTIONS SPEEDING TOO FAST FOR CONDITION, EXCEEDING POSTED SPEED LIMIT AND/OR RACING WAS INDICATED.

### SPEEDING IN URBAN AREAS



Speeding Crashes in urban areas were **2.2x** as likely to involve a motorcycle.

### SPEEDING IN RURAL AREAS



Speeding Crashes in rural areas were **60%↓** more likely to involve a teen driver.

**SLOW DOWN**  
**TENNESSEE**  
TENNESSEE HIGHWAY SAFETY OFFICE