

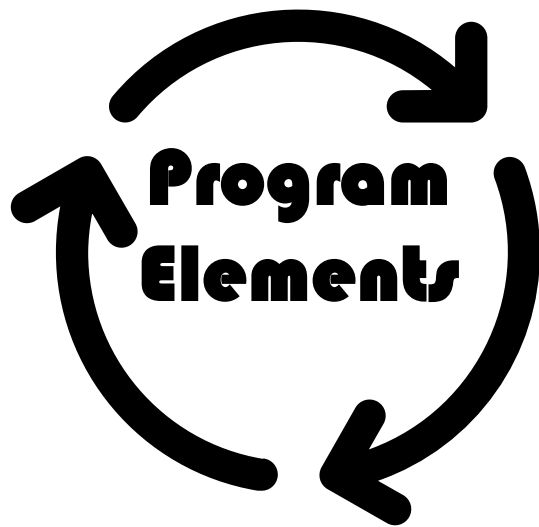


STRONG Families
Northeast Tennessee

Families First Community Advisory Board

January 16, 2025





Family Partner Services

- High Intensity, Low Caseload
- Family Centered Coaching
- Goal Setting/Planning, Information Support/Assistance, Community Resource Navigation, Unite Us Referrals, Motivational Interviewing

Financial Support Services

- Milestone payments (to families)
- Barrier removal payments (to vendors/merchants/providers)
- Transitional benefits payments (to vendors/merchant/providers)

Behavioral Health Services

- Expedited access to mental health counseling
- Addiction treatment/recovery services

Specialized Training & Assistance

- Parent education
- Financial counseling
- Career assessment/planning and job training
- Social Capital Building



STRONG Families NETN Enrollment

Total Families
Enrolled

709

Total Families
Intervention

360

Total Families
Waitlist

349

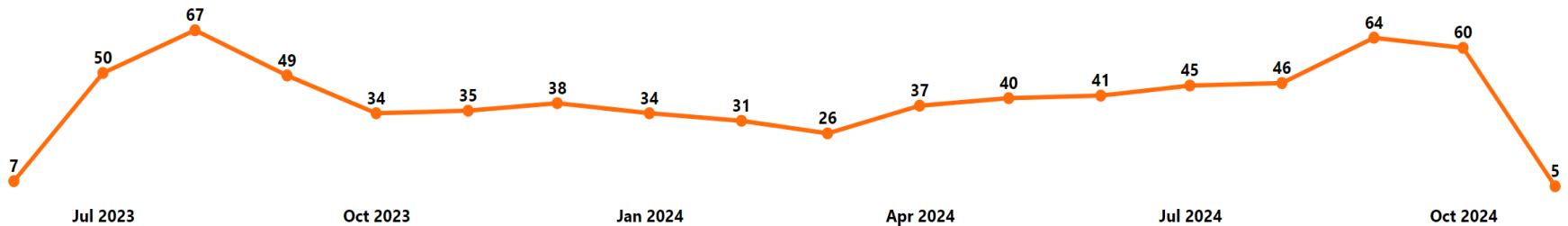
Total Active
Families

390

Total Active
Individuals

1223

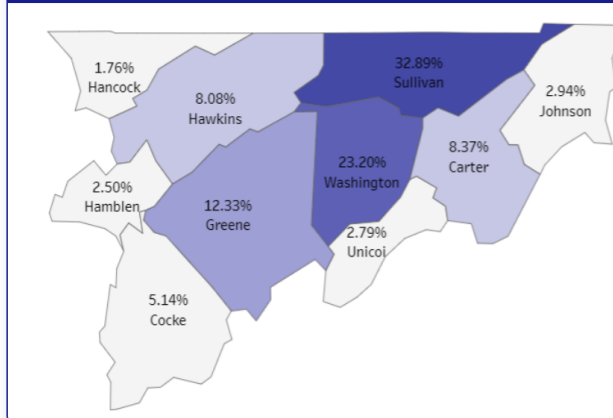
Enrollment Trend



Families Enrolled

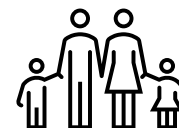
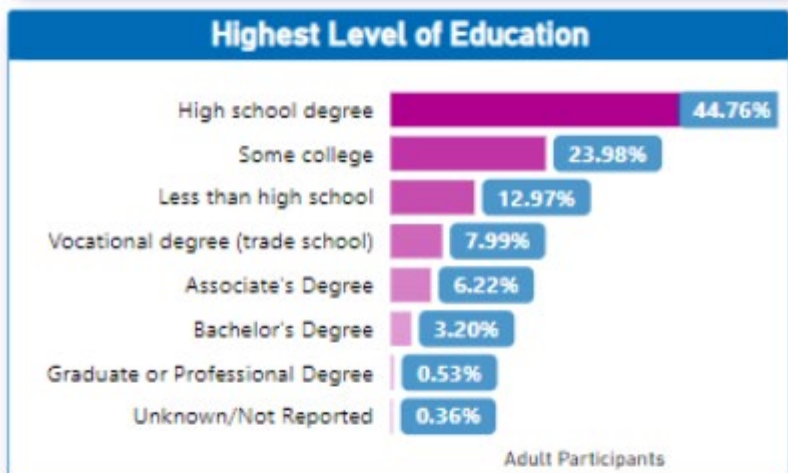
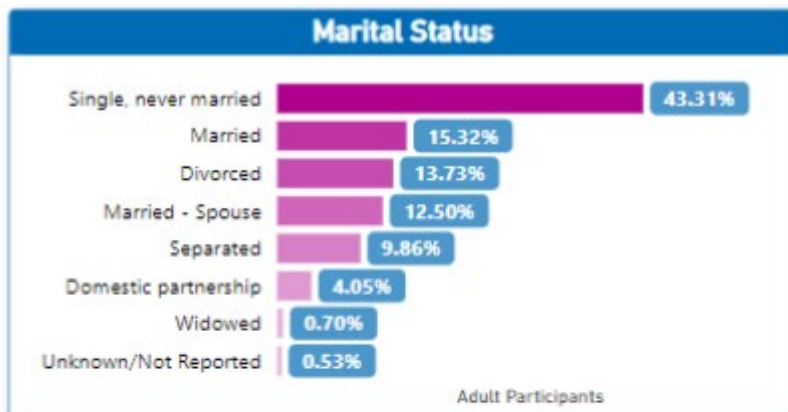
County of Residence	Intervention/Immediate	Waitlist Control	Total
Carter	31	26	57
Cocke	20	18	38
Greene	44	43	87
Hamblen	9	10	19
Hancock	6	6	12
Hawkins	29	28	57
Johnson	11	9	20
Sullivan	117	118	235
Unicoi	11	10	21
Washington	82	81	163
Total	360	349	709

Enrollment Distribution by County



Families Enrolled

Updated Enrollment Status	Families
Intervention/Immediate	345
Waitlist Control - Not Yet Eligible for Services	246
Waitlist Control - Enrolled	45
Waitlist Control - Loss to follow-up	26
Waitlist Control - TBD	19
Waitlist Control - Ineligible	11
Dismissal	9
Loss to follow-up	3
Withdrawal	3
Waitlist Control - Declined	2
Total	709



>2800 Participants

AVERAGE
HOUSEHOLD SIZE
4

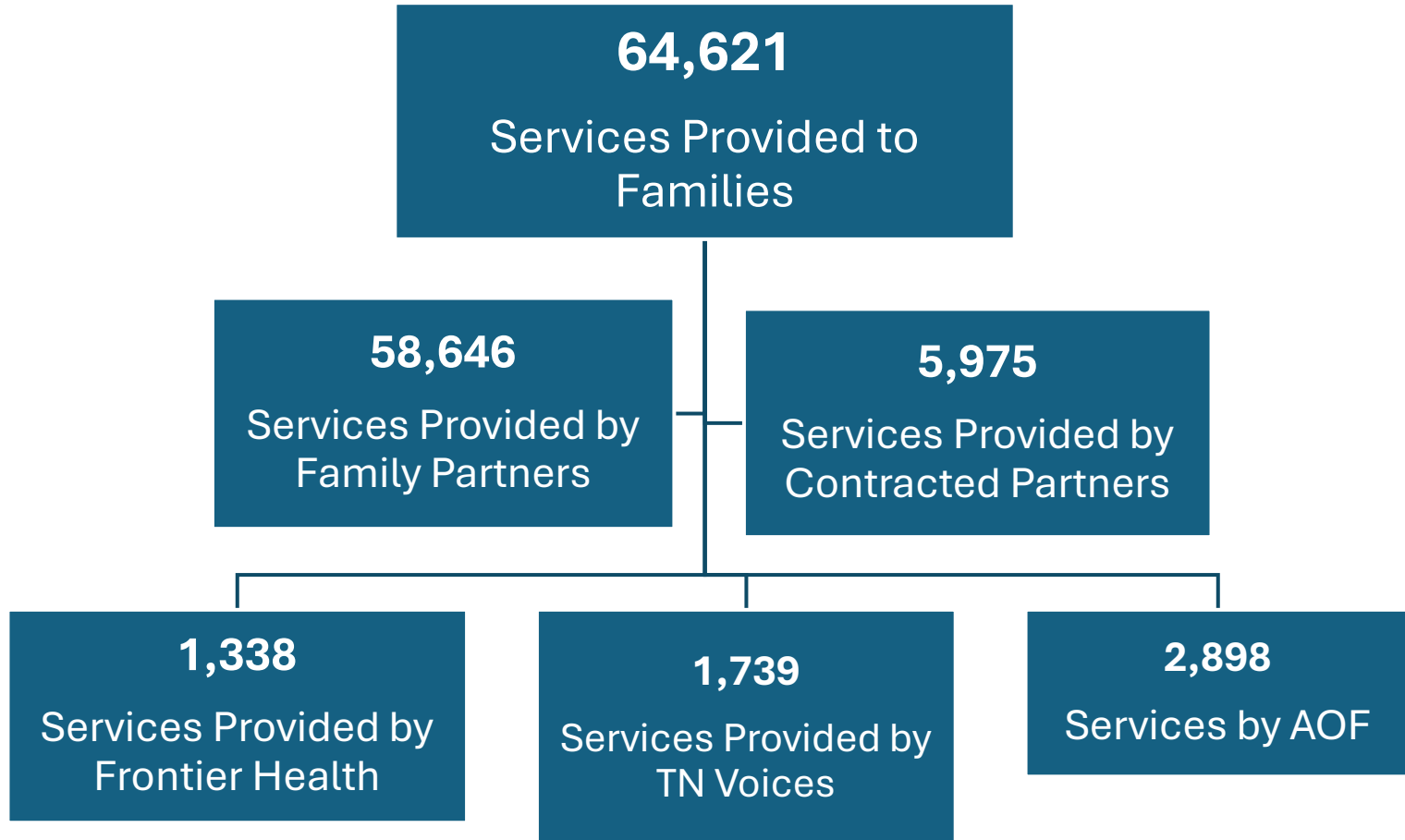
75.1%
OF FAMILIES HAVE
HOUSEHOLD SIZE
LESS THAN 5

24.4%
OF FAMILIES HAVE
HOUSEHOLD SIZE
BETWEEN 5 AND 9

0.4%
OF FAMILIES HAVE
HOUSEHOLD SIZE
GREATER THAN 10



Services Provided to Families



Mental & Behavioral Health Services

- **Frontier Health & Helen Ross McNabb**
- Behavioral Health Navigator Position to Process Referrals
- Expedited Services (<10 days) Adult Therapy, Children's Therapy, Adult Substance Use Program, Medication Management

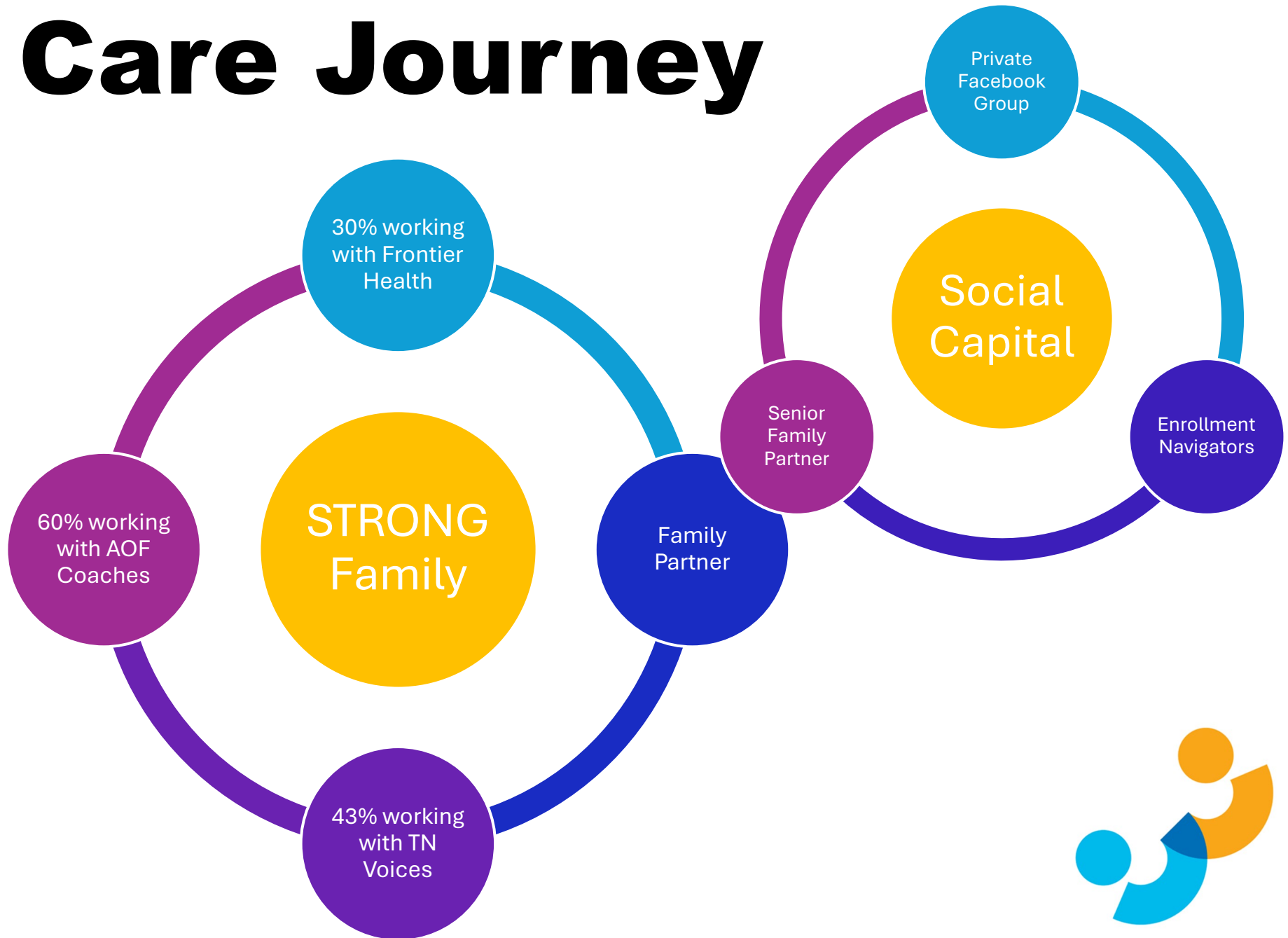
Financial Coaching

- **Appalachian Opportunity Fund**
- 1:1 Coaching (3 FTE coaches, hiring 4th)
- Financial Literacy, Personalized Financial Plan, establish and/or increase credit and savings, Debt consolidation and pay down, education on predatory lenders, tax prep, ALICE

Parenting Education

- **TN Voices**
- Nurturing Parenting Facilitators (3 FTEs)
- 10-week evidence-based course empowering parents/caregivers

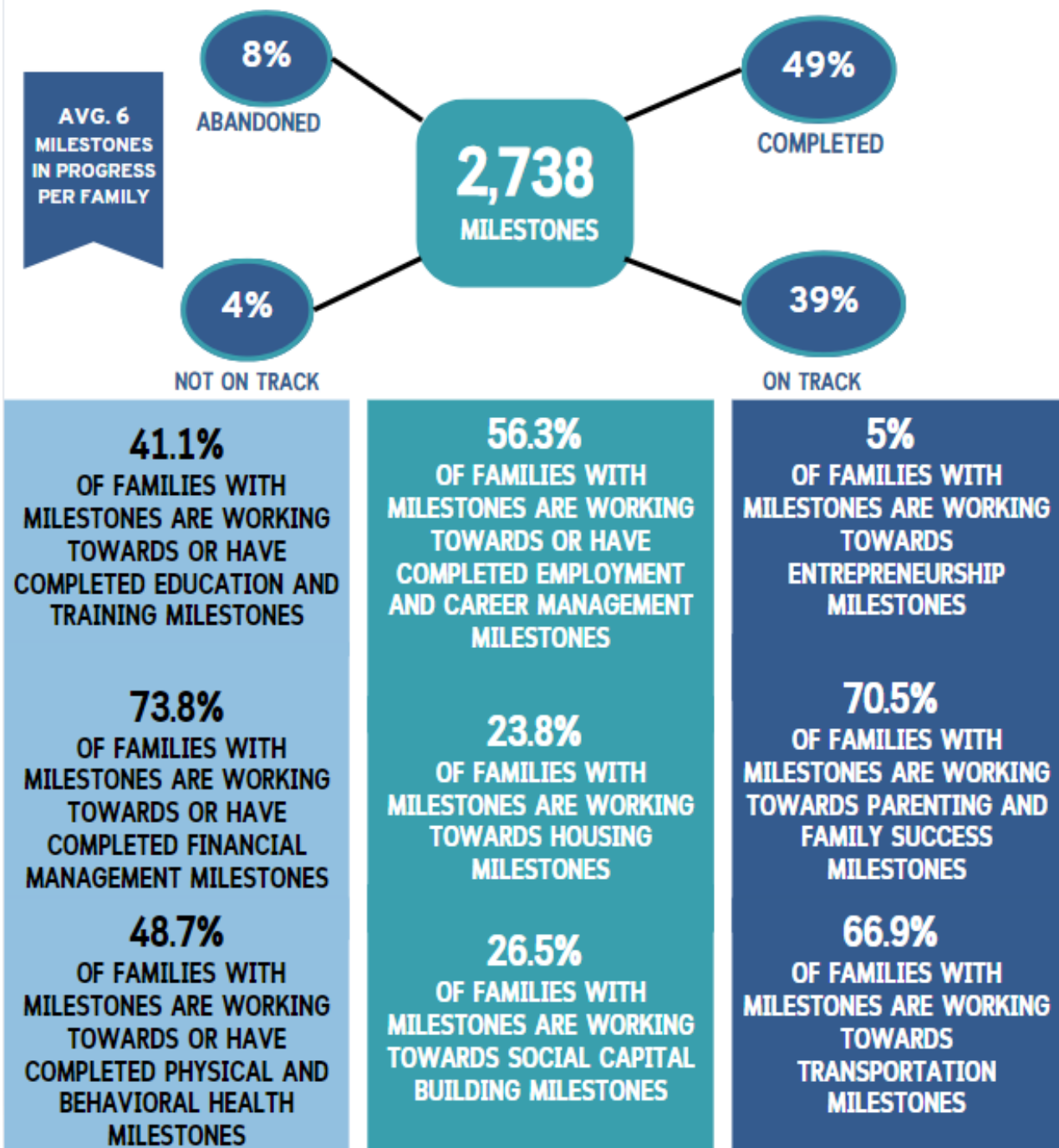
Care Journey



Milestone Plan



Milestone Progression Snapshot



EDUCATION AND TRAINING

- **47** PEOPLE WERE ACCEPTED INTO A COMPETITIVE POST-SECONDARY EDUCATION PROGRAM
- **21** PEOPLE COMPLETED A SCHOLARSHIP APPLICATION AND FAFSA

EMPLOYMENT AND CAREER MANAGEMENT

- **51** PEOPLE OBTAINED FULL-TIME EMPLOYMENT
- **41** PEOPLE OBTAINED PART-TIME EMPLOYMENT

FINANCIAL MANAGEMENT

- **55** FAMILIES COMPLETED 100% OF MONTHLY ACTION ITEMS FOR 3 MONTHS
- **119** FAMILIES COMPLETED 100% OF MONTHLY ACTION ITEMS FOR THE FIRST MONTH
- **33** FAMILY IMPROVED CREDIT SCORE BY 50 POINTS
- **38** FAMILY HAS MADE MINIMUM PAYMENTS ON 1 DEBT FOR 3 MONTHS
- **195** FAMILIES HAVE MET WITH A FINANCIAL COUNSELOR (AOF) AND DEVELOPED PERSONALIZED PLAN UTILIZING 1:1 COACHING METHOD
- **50** FAMILIES HAVE PAID OFF A DEBT IN FULL



HOUSING

- **32** FAMILIES EXECUTED A LEASE AGREEMENT FOR RENTAL PROPERTY
- **13** FAMILIES OBTAINED PERMANENT HOUSING

PARENTING AND FAMILY SUCCESS

- **154** PEOPLE ATTENDED & COMPLETED NUTRITION COURSE
- **63** PARENTS ATTENDED AT LEAST 1 PARENT-TEACHER CONFERENCE
- **104** PARENTS COMPLETED AN ENTIRE EVIDENCE BASED PARENTING COURSE OR CURRICULUM

TRANSPORTATION

- **151** FAMILIES COMPLETED EDUCATION ON PROPER CAR SEAT SAFETY
- **91** FAMILIES OBTAINED CAR INSURANCE OR IMPROVED CAR INSURANCE POLICY
- **26** FAMILIES OBTAINED A NEW DRIVER'S LICENSE FOR THOSE THAT HAVE BEEN SUSPENDED OR REVOKED
- **64** FAMILIES HAVE PURCHASED A VEHICLE OR SIGNED A NEW LEASE FOR A VEHICLE



Barrier Removal Plan

Stabilization support

Transitional Benefits

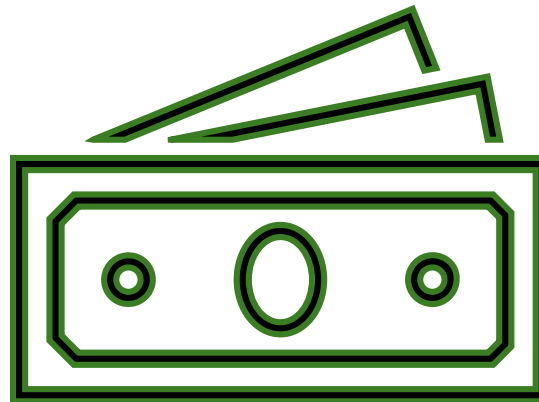
Most common barrier removals:

- Housing needs
- Auto repairs
- Laptop computer to fulfill education and employment requirements

BARRIER REMOVAL REQUESTS PAID

284 FAMILIES RECEIVED BARRIER REMOVAL ASSISTANCE

1400 BARRIER REMOVAL ASSISTANCE REQUESTS PAID



\$677,260
in Specific
Assistance



