



# WELCOME EDUCATORS



# Welcome!

From the [Tennessee Department of Human Services](#) (TDHS) [Child Care Services](#) Team and our child care quality partners. Early childhood is a critical time for laying social, academic, and healthy foundations that can have a significant impact on the life trajectory of children, and consequently our communities over time. Having safe, quality care to promote development and long-term wellbeing among young Tennesseans is an investment in our state's future. The children we care for today will be our leaders tomorrow.

TDHS and our partners view early childhood educators as professionals in licensed child care spaces and critical contributors to the long-term welfare of our state. We are honored by your choice to share your time and talents in this important work. To support you in your experience and professional development, we offer this packet as a reference for the [tools, training, and resources](#) that are available to you as an early childhood professional. We invite you to regularly visit the Department of Human Services and its partners online to learn more about upcoming training and career development opportunities in Tennessee.

**Thank you again for investing in our state's future one child at a time.**

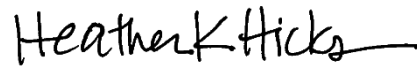
**Sincerely,**



Gwen Laaser  
Director

Child Care Services

[Tennessee Department of Human Services](http://tn.gov/humanservices)  
[tn.gov/humanservices](http://tn.gov/humanservices)



Heather Hicks  
Director

[Tennessee Child Care Resource & Referral Network](https://tnccrr.org/)  
<https://tnccrr.org/>

[Tech Goes Home Tennessee](https://techgoeshometn.org/)  
<https://techgoeshometn.org/>



Belva K. Weathersby, MSW  
Director

[Tennessee Early Childhood Training Alliance](https://tectainfo/)  
<https://tectainfo/>



Travonda Davenport  
Director

[Tennessee Family Child Care Network](http://www.tfccn.org)  
[www.tfccn.org](http://www.tfccn.org)



Angela Webster  
Executive Director

[Association of Infant Mental Health in Tennessee](https://www.aimhitn.org/)  
<https://www.aimhitn.org/>



Anne Clem  
Grant Manager

[ChildcareTennessee](http://www.childcaretennessee.com)  
[www.childcaretennessee.com](http://www.childcaretennessee.com)



Katy Canion  
Director

[Child Care WAGE\\$@ Tennessee](http://www.tnwages.org)  
[www.tnwages.org](http://www.tnwages.org)



James Pond  
President

[Governor's Early Literacy Foundation](http://www.Governorsfoundation.org)  
[www.Governorsfoundation.org](http://www.Governorsfoundation.org)



Lisa Walsh  
Registry and Training Manager

[Tennessee Early Childhood Training Alliance](https://tectainfo/)  
<https://tectainfo/>



Diedre Ford  
Assistant Director of Information Technology  
Social Work Office of Research and Public Service  
University of Tennessee

[Tennessee Child Care Online Training System](http://www.tccots.com)  
[www.tccots.com](http://www.tccots.com)

[Tennessee Professional Archive of Learning](https://www.tnpal.org/)  
<https://www.tnpal.org/>

[TrainTN](http://www.traintn.org)  
[www.traintn.org](http://www.traintn.org)

# Welcome to the Tennessee Professional Archive of Learning!



The Tennessee Professional Archive of Learning (TNPAL) is the official electronic system of record for the Tennessee Department of Human Services (TDHS). TNPAL is an online platform that empowers and supports you in your professional development by providing you with resources and services such as:

- A personalized and portable record of your professional work history.
- Documentation of your professional accomplishments and certificates.
- Communication with your center director and coaches.
- Tools for creating a professional development plan and resume.
- Auto-populating your profile with training certificates completed in organizations recognized by TDHS, including TN CCR&R, TECTA, TCCOTS, other TrainTN-approved trainings, conferences, and more!

**These tools not only save you time, but they also provide you with practical ways to illustrate your qualities as an early childhood educator.**

For questions, call the help desk at: 1-615-277-1688

## HOW TO REGISTER FOR TNPAL

### STEP 01

Navigate to [tnpal.org](http://tnpal.org)

### STEP 02

Click "Start Now" on the home page.

### STEP 03

Fill out your information: **Name, email, and password.**

- If you have an existing email you use for training, use this one.

### STEP 04

Confirm your email address at the **confirmation link** sent to your email.

### STEP 05

Use the information you specified to log in.

- On the congratulations page, be sure to write down or save your **registration ID** for future use (also accessible from your personal profile).

### STEP 06

Fill in your employment, education, certifications, credentials, and community service info.

**You are now registered for TNPAL!**

For videos on how to register and navigate TNPAL, scan the QR code below or visit: [bit.ly/3zq0jsT](http://bit.ly/3zq0jsT)



Tear along the perforated edge to keep a copy of your TNPAL ID.



### TNPAL ID NUMBER:

Present this card or refer to your TNPAL ID when signing in to trainings.

WRITE ID HERE

Scan QR code for digital ID Card:



**FOR MORE QUESTIONS, CONTACT THE HELP DESK AT:**

1-615-277-1688

[support@tnpal.org](mailto:support@tnpal.org)



This project is funded through a contract with the Tennessee Department of Human Services and Tennessee State University, Center of Excellence for Learning Sciences.



# TrainTN.org

Promoting professional instruction for the care of Tennessee's children

**TrainTN is the official clearinghouse for external early childhood trainings recognized and approved by the Tennessee Department of Human Services (TDHS).**



TrainTN trainers use TrainTN.org in order for TDHS to recognize their credentials and materials. Educators use the TrainTN Catalog to search for specific trainings or browse trainings by content area, allowing them to easily find approved trainings that meet their needs. TrainTN trainers also submit attendance records through the site.



Attendance records for trainings completed with TrainTN approved trainers automatically transfer to TNPAL — Tennessee Professional Archive of Learning — and provide a complete and accurate picture of training that educators receive. Participants enter their TNPAL ID at each TrainTN approved training to receive credit toward your professional development.



TrainTN provides an application process for external trainers and trainings to be recognized through an official review. Once approved, trainers may be recognized for a period of five years.



TrainTN approved trainers are responsible for the entire training event, including the evaluation process and certifying completion of trainings.



Trainings offered by TDHS and its many CCDF partners — including Child Care Resource & Referral (CCR&R), Tennessee Early Child Training Alliance (TECTA), and others — are approved. This includes CCR&R child care provider training and small business academies, TECTA orientations and training events, online training via Tennessee Child Care Online Training System (TCCOTS), training hours awarded for targeted technical assistance, and professional credential pathway trainings.

## TNChildCareHelpDesk.org

Need help with TDHS and CCDF partner child care resources?

**833-TDHS-CCP**

833-834-7887

Toll-free phone number

**TDHS\_CCP@utk.edu**

Email

**Monday – Saturday**

7 a.m. – 9 p.m. CT

Scan QR code to visit  
TNChildCareHelpDesk.org:



## TrainTN Support

**TrainTN@tnstate.edu**

Training Support & Questions

**TrainTN@utk.edu**

Website Technical Support

Scan QR code to  
visit TrainTN.org:

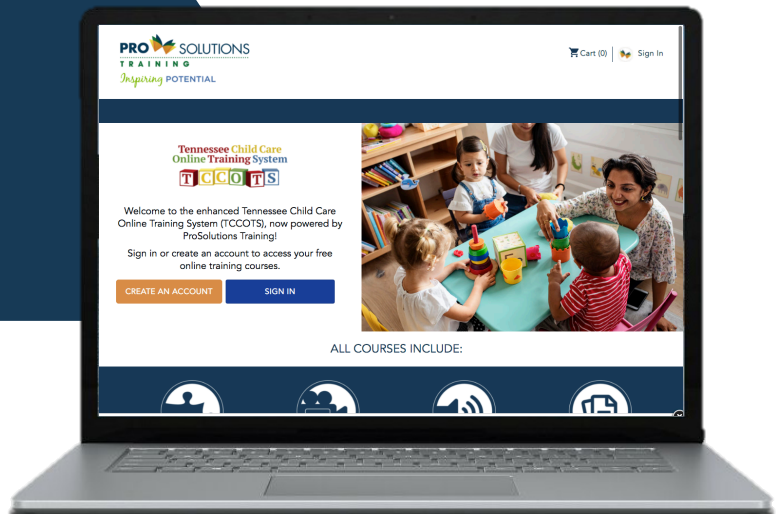


This project is funded through a contract with the Tennessee Department of Human Services and the University of Tennessee, Social Work Office of Research and Public Service and Tennessee State University, Center of Excellence for Learning Sciences.



# Free Online Training

[www.tccots.com](http://www.tccots.com)



TCCOTS is a free online learning management system supporting early childhood educators in Tennessee. TCCOTS is powered by ProSolutions Training and administered by the Center of Excellence of Learning Sciences at Tennessee State University on behalf of the Tennessee Department of Human Services (TDHS).

TCCOTS training modules are designed by early childhood experts. They offer convenient training on relevant topics for individuals providing care and education for Tennessee's children. TCCOTS accommodates unique learning styles through games, videos, and quizzes with printable resources to share with staff and families.

### Free Online Training

TCCOTS offers free training for all early childhood education professionals, from new educators to program directors and administrators.

### Accessible Anytime

TCCOTS Training modules offer an alternative to in-person learning and can be completed any time during the day, evening, or weekend.

### TrainTN-Approved

TCCOTS early childhood trainings meet Child Care and Development Block Grant (CCDBG) training requirements and are recognized as approved by the Tennessee Department of Human Services (TDHS).



### ¿Hablas español?

Several TCCOTS modules are available in Spanish. Register for training to view the full course catalog.

### Get Started



To get started, scan the code above or visit [www.tccots.com](http://www.tccots.com).



### Need Help?

For information or assistance, contact the Helpdesk at [tccots-help@tnstate.edu](mailto:tccots-help@tnstate.edu) or call 615-277-1696.



# TN Child Care HELP DESK

[tnchildcarehelpdesk.org](https://tnchildcarehelpdesk.org)

The Tennessee Child Care Help Desk is the Tennessee Department of Human Services Child Care Services unified help desk. We can help you find answers to questions related to Tennessee Department of Human Services Child Care Services and partner programs that support child care in Tennessee, including Tennessee's Child Care Program Stabilization Grants, TrainTN, TNPAL, TDHS Child Care Services Provider Portal, TDHS eLicensing, and Child Care Partner technology resources.

## CONTACT US



833-TDHS-CCP  
8 3 3 8 3 4 7 2 2 7



TDHS\_CCP@utk.edu

## HOURS OF OPERATION

Monday – Saturday

7 a.m. – 9 p.m. CT



# Join AIMHiTN.org

## and Bring More Smiles to Tennessee's Children!

Scientific research shows that our brains develop at a rapid pace in the earliest years of life. Positive relationships with adults during this critical time have a profound impact on brain development, providing the support and stability necessary for long-term health and well-being.

The Association of Infant Mental Health in Tennessee (AIMHiTN) concentrates on prenatal care to the child's sixth birthday by delivering education, training, and resources to assist caregivers, educators, healthcare providers, and other professionals in their everyday interactions with infants, young children, and their families. By focusing on early relational health, AIMHiTN contributes to healthy communities and a productive workforce for generations to come.

Early relational health is all about healthy and positive child development that grows out of nurturing, warm, and responsive early relationships. These relationships between the parent/caregiver and child are rooted in trust and social connections.



In support of early childcare educators, AIMHiTN offers:

### Endorsement® - A Specialized Credential:

Infant and Early Childhood Mental Health Endorsement® for Culturally Sensitive, Relationship-Focused Practice Promoting Infant Mental Health (IMH-E®) is an internationally recognized credential for professionals who work with expecting mothers, children under three, and their families. The ECMH-E® is a valuable credential to consider for those professionals working with young children, 3 to 6, and their families. Earning Endorsement® demonstrates that professionals are specially trained and support early relational health. Endorsement® shows that professionals understand how important relationships are for the children in their care.

"My journey to Endorsement helped me understand a child's behavior better and to know how to address it in the most positive way."

--Jennifer, ECMH-E early childhood professional

### Diversity, Equity, Inclusion, and Belonging:

AIMHiTN is committed to ensuring diversity, equity, and inclusion are embedded in early childhood programs. We offer training and technical assistance that empower educators to help children with differing abilities develop strong, healthy relationships with their friends and teachers, creating classrooms where all little ones and their families feel that they belong.

### Community Engagement:

You belong at AIMHiTN! We all need a place to belong, too. We are the professional home for anyone whose work supports early relational development for infants, young children, and their families. Become one of our members and join AIMHiTN's multidisciplinary family of professionals - let's work together to bring more smiles to children!

### Reflective Supervision and Consultation (RSC):

It's about relationships! RSC creates a space where professionals can learn together and is a key part of infant and early childhood mental health (IECMH). The idea that each relationship affects every other relationship is an example of parallel process and is the foundation of RSC. Professionals are provided support and guidance in a safe, trusting, collaborative environment.

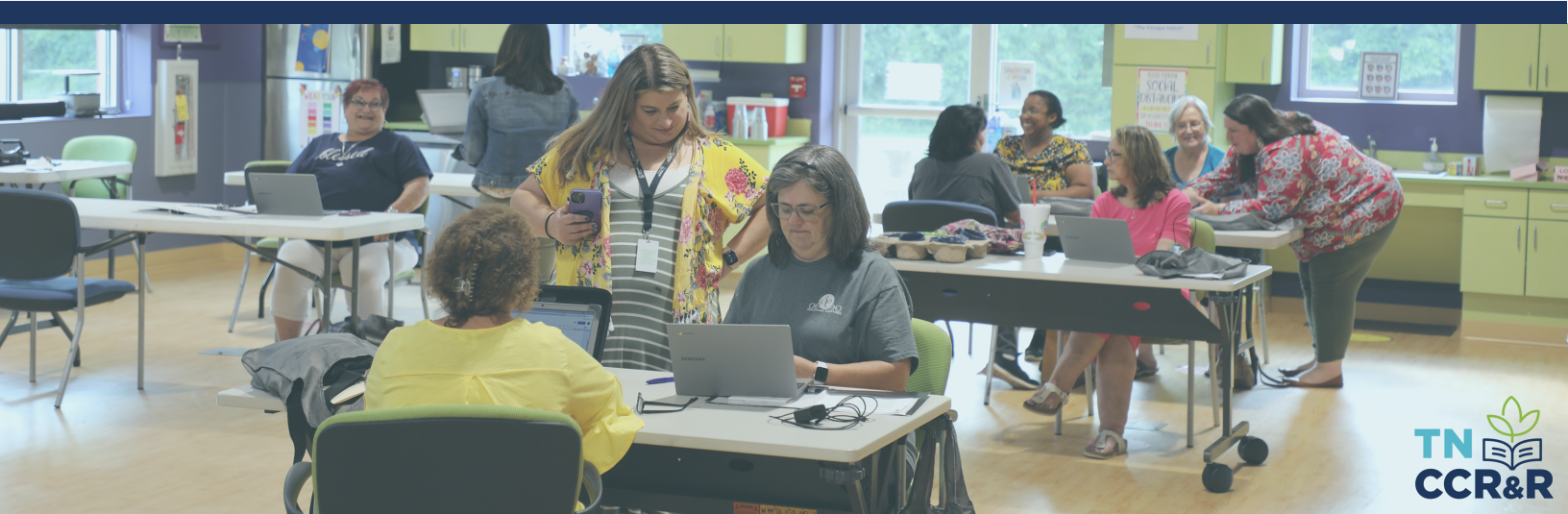




The **Tennessee Child Care Resource & Referral Network (TN CCR&R)** elevates the quality of child care across the state by providing early childhood resources for educators through connection to cutting-edge information, online and in-person training, on-site coaching and modeling, and referral to state partners and resources. Contact a coach in your region by visiting [tncrr.org](http://tncrr.org).

**The TN CCR&R Network provides training and coaching on various early child care topics, including:**

- |  |  |   |
|--|--|---|
| ✓<br>Adverse Childhood Experiences (ACES)                        | ✓<br>Developmentally Appropriate Practices | ✓<br>First Aid and CPR Training                       |
| ✓<br>Behavior Management, Discipline, Social & Emotional Support | ✓<br>Diversity and Equity                  | ✓<br>Playground Safety                                |
| ✓<br>Child Development   | ✓<br>Health and Safety                     | ✓<br>Natural Play Spaces                              |
| ✓<br>Classroom Management  | ✓<br>Inclusion                             | ✓<br>Tennessee Early Learning Developmental Standards |
|  | ✓<br>Early Literacy                        | ✓<br>Family Engagement                                |





## Central

Physical Location N/A

Counties Served - Davidson, Rutherford, Williamson, and Wilson

[centralccrr@signalcenters.org](mailto:centralccrr@signalcenters.org)

Main Office: 931-494-6625

## East & Upper East

600 Henley Street, UT Conference Center, Suite 224

Knoxville, TN 37996-4126

East Counties Served - Anderson, Blount, Campbell, Claiborne, Knox, Jefferson, Loudon, Monroe, Sevier, Union

Upper East Counties Served - Carter, Cocke, Grainger, Greene, Hamblen, Hancock, Hawkins, Johnson, Sullivan, Unicoi, Washington

[eastccrr@utk.edu](mailto:eastccrr@utk.edu)

Toll-Free: 877-584-0596

## Mid Cumberland

225A Dunbar Cave Road, Clarksville, TN 37043

Counties Served - Cheatham, Dickson, Houston, Humphreys, Montgomery, Robertson, Stewart, Sumner

[midcumberland@dscd.org](mailto:midcumberland@dscd.org)

Toll-Free: 855-251-3236

## Shelby

600 Jefferson Ave, Suite 311, Memphis, TN 38105

Counties Served - Shelby

[shelbyccrr@lebonheur.org](mailto:shelbyccrr@lebonheur.org)

Main Office: 901-287-4748

## Southeast

109 North Germantown Road, Chattanooga, TN 37411

Counties Served - Bledsoe, Bradley, Grundy, Hamilton, Marion, McMinn, Meigs, Polk, Rhea, Sequatchie

[seccrr@signalcenters.org](mailto:seccrr@signalcenters.org)

Toll-Free: 866-296-3422

## South Central

2014 Elmer Pogue Dr, Columbia, TN 23401 Suite A

Counties Served - Bedford, Coffee, Franklin, Giles, Hickman, Lawrence, Lincoln, Marshall, Maury, Moore, Lewis, Perry, Wayne

[scccrr@signalcenters.org](mailto:scccrr@signalcenters.org)

Toll-Free: 866-776-2811

## West

32 Garland Drive, Jackson, TN 38305

Counties Served - Benton, Carroll, Chester, Crockett, Dyer, Fayette, Gibson, Hardeman, Hardin, Haywood, Henderson, Henry, Lake, Lauderdale, Madison, McNairy, Obion, Tipton, Weakley, Decatur

[southwestccrr@wth.org](mailto:southwestccrr@wth.org)

Toll-Free: 800-858-2738

## Upper Cumberland

425 E. Broad Street Suite 2, Cookeville, TN 38501

Counties Served - Cannon, Clay, Cumberland, Dekalb, Fentress, Jackson, Macon, Morgan, Overton, Pickett, Putnam, Roane, Scott, Smith, Trousdale, Van Buren, Warren, White

[ucccrr@signalcenters.org](mailto:ucccrr@signalcenters.org)

Main Office: 931-319-4876



# ChildcareTennessee

*Serving those that serve the children of Tennessee.*

ChildcareTennessee - an initiative led by The Community Foundation of Middle Tennessee - focuses on collaborative opportunities in child care centers' administrative, programmatic and operational services. Our goal is to improve the quality, accessibility and sustainability of the services offered to Tennessee's children and their families.

To learn more, visit [www.ChildcareTennessee.com](http://www.ChildcareTennessee.com).

## How Can ChildcareTennessee.com Help You?

**Curated Pinterest Page:** Visit [www.pinterest.com/eceshared](http://www.pinterest.com/eceshared) and explore activities for your classroom!

**My VIP Savings:** Visit [www.myvipsavings.com](http://www.myvipsavings.com) to access exclusive discounts and unlock savings on thousands of items and popular brands available through ChildcareTennessee.

## Ask Your Director To Log In and Share Resources Like:

**In The Classroom:** Explore a variety of resources to support learning from lesson plan templates, to alphabet cards to seasonal crafts and more!

- [Hand-Washing Poster](#)
- [Tips for Talking with Parents About Development](#)
- And more!

**Engaging Families:** ChildcareTennessee.com has resources for communicating with families about a variety of topics:

- Child Development
- Social and Emotional Issues
- Safety
- And more!

## Big or Small

[ChildcareTennessee.com](http://ChildcareTennessee.com) offers resources for TDHS-licensed centers, family and group home programs of all sizes.

*This project is funded through a grant with the Tennessee Department of Human Services and The Community Foundation of Middle Tennessee.*



## Dolly Parton's IMAGINATION LIBRARY in Tennessee

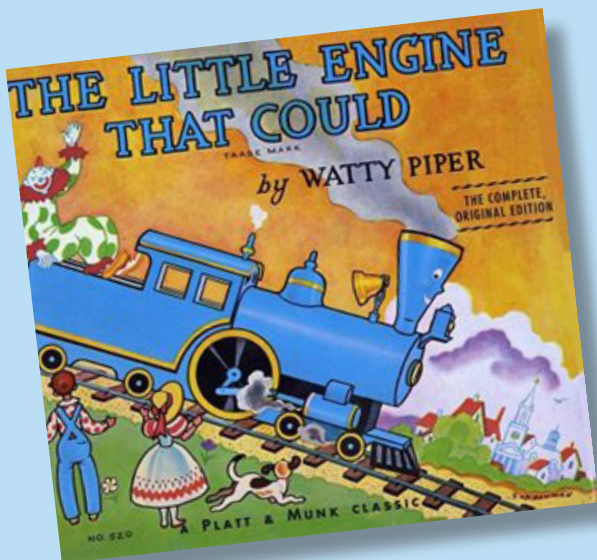
- WHO?** ALL Children from birth to 5 yrs old who live in Tennessee.
- WHAT?** A child's very own Imagination Library! A new age-appropriate book mailed to the child every month until he/she turns 5 years old.
- WHEN?** Books begin arriving each month 8 to 10 weeks after enrolling.
- WHERE?** Mailed to the child's home.
- HOW?** Dolly Parton's Imagination Library in partnership with Governor's Early Literacy Foundation, the State of Tennessee, Governor & First Lady Lee, and other generous donors have joined together to make this program available to every preschool child in the state.
- HOW MUCH?** **FREE!** Books are provided at NO COST to families!

**Give a child the gift of reading.  
Read together often.**

This is the greatest boost toward a successful education any child could get!

**Enroll a child today!**

Visit [GovernorsFoundation.org](http://GovernorsFoundation.org)  
or call 1-877-99-BOOKS (2-6657)



The Little Engine That Could © Penguin Group (USA) Inc. The Little Engine That could, "I Think I Can", and all related titles, logos and characters are trademarks of the Penguin Group (USA) Inc. Used with permission.

## GOVERNOR'S EARLY LITERACY FOUNDATION

**Building lifelong learners in  
Tennessee**

Governor's Early Literacy Foundation (GELF) equips Tennessee's children with books and innovative literacy tools that encourage lifelong learning for a brighter future. GELF is a nonpartisan 501c3 driven by a mission to strengthen early literacy in Tennessee by acting as a thought leader, advisor, and catalyst for programs across the state, including Birth-5 Book Delivery through Dolly Parton's Imagination Library, K-3 Book Delivery, Caregiver Engagement, Book Buses and Storybook Trails.

**Stay connected to GELF:**




-  @GovEarlyLiteracyTN
-  @GovLiteracyTN
-  /TNImaginationLibrary
-  @GovEarlyLiteracyTN

**TN** Department of  
**Human Services**

**Building A Thriving Tennessee**

The Tennessee Department of Human Services (TDHS) mission is to build strong families by connecting Tennesseans to employment, education and support services. The Department is proud to partner with Governor's Early Literacy Foundation in providing children and families reading tools to build a lifetime of opportunities.

**Stay connected to TDHS:**

-  /tennesseedepartmentofhumanservices
-  @TNHumanServices
-  /TennesseeDepartmentofHumanServices

*This project is funded through a grant between the Tennessee Department of Human Services and Governor's Early Literacy Foundation.*



GOVERNOR'S

**EARLY  
LITERACY  
FOUNDATION**



## Give children the gift of reading! It's more than books. It's the future of Tennessee.

*Dolly Parton's Imagination Library (DPIL) is a gift of up to 60 free books – at no cost to families – for all preschool children in Tennessee. Governor's Early Literacy Foundation partners with DPIL to make the program available statewide. It takes the commitment of many partners and donors at all levels to keep the program thriving.*

The most important goal of the Tennessee Department of Human Services (TDHS) is to help the people we serve thrive. That's why we've partnered with Governor's Early Literacy Foundation to enroll children into Dolly Parton's Imagination Library and to provide books in TDHS county offices and classrooms of licensed child care agencies.

### DID YOU KNOW?



A child's brain grows to 80% of its full size by age 3.

In the first few years of life, a child's brain builds 700 connections per second.

Reading to a child in an interactive style raises a child's IQ by 6 points.

Children with as few as 25 books in the home complete an average of two more years of schooling than those with no books.

Children participating in the Imagination Library Program have stronger early ready skills.

Here are a few tips to make the most out of reading time.  
**How old are the children in your agency or office?**

### 0-24 Months

- Help babies to explore the book. Let them turn the pages, grab, or even chew on it.
- Read with joy and excitement. Use different voices for different characters.
- When speaking with babies, use a slow pace, speak clearly, and repeat for understanding.
- Ask questions they can answer by pointing. You can say, "Where's the doggie?" or "Where's the happy baby?" or "Who says meow?"
- At a very young age, babies communicate through facial expressions, eye contact, and sounds, like cooing and crying. If you hear babies make a sound, repeat it and wait for them to make another.

### 2-3 Years

- Cuddle up with children on your lap.
- Make eye contact as you read.
- Ask children to point out things in the pictures and talk about them.
- Use the pictures to teach new words. Say, "See the trumpet? A trumpet is a loud instrument that makes music." Then pretend to play the trumpet.
- Use the story to start a conversation about something you have seen or done together.

### 4-5 Years

- Read with expression, using different voices for different characters.
- Emphasize rhythms and rhymes in stories.
- Encourage children to repeat what you say, comment on it, and ask questions.
- Point out written words in the world around you, like on agency signs and on other materials on display.
- Ask children to find a new word each time you read together.

**More tips can be found by visiting [www.GovernorsFoundation.org](http://www.GovernorsFoundation.org)**

To learn more about the Tennessee Department of Human Services, programs and services visit [www.tn.gov/HumanServices](http://www.tn.gov/HumanServices)

To donate or volunteer, visit [www.GovernorsFoundation.org](http://www.GovernorsFoundation.org).

All activities and cover images courtesy of G.P. Putnam's Sons • Grosset & Dunlap • Puffin Books • Dutton Children's Books

• Viking Children's Books • Dial Books for Young Readers • Frederick Warne & Company

Divisions of Penguin Young Readers Group • [www.penguin.com/youngreaders](http://www.penguin.com/youngreaders)

Cover image © Eric Hill/Salspot Ltd. 2010

# Tech Goes Home Tennessee



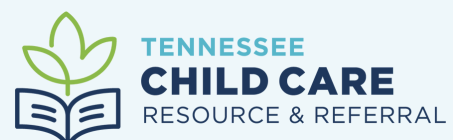
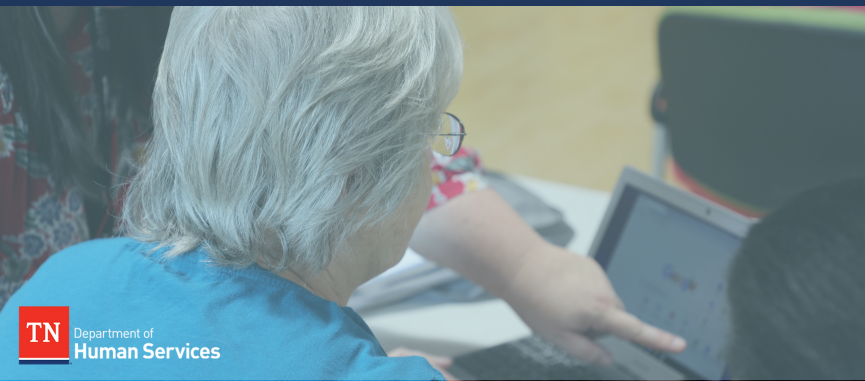
## DIGITAL LITERACY TRAINING AND COACHING

- **Tech Goes Home** is a 15-hour training course designed to teach early educators foundational technology skills, such as email navigation and presentation building, for the advancement of their career and support of their work.
- **Professional development training** on programs and resources funded by the Tennessee Department of Human Services (TDHS) is available. Participants can learn to use programs including the Tennessee Professional Archive of Learning (TNPAL), TrainTN, and more.
- Tech Goes Home training is TrainTN-approved and includes **small business and entrepreneurship** technology skill-building.



## 1-ON-1 COACHING INCLUDES:

- **Training on software** that includes word processing, spreadsheets, slideshows, calendar, and email.
- Upon completion of Tech Goes Home training, licensed child care programs **may be eligible to receive technology incentives** (laptop, etc) for use by their program staff.
- To register for Tech Goes Home, visit the [TNCCRR.org](https://www.tnccrr.org) training calendar.
- To learn more, visit [TechGoesHomeTN.org](https://www.TechGoesHomeTN.org)



TENNESSEE  
**CHILD CARE**  
RESOURCE & REFERRAL





TENNESSEE EARLY CHILDHOOD TRAINING ALLIANCE

Promoting Professionalism and High Quality Child Care in Tennessee

## GET STARTED ON YOUR PROFESSIONAL DEVELOPMENT JOURNEY!

TECTA offers free, Tennessee Department of Human Services (TDHS) and TrainTN-approved training through a network of professional development programs in eight locations and online serving all 95 counties. Visit [www.tecta.info](http://www.tecta.info) to get started.

TECTA provides a variety of continuing education opportunities through training, technical assistance, credential support, and certificate programs to support your professional development goals.

### TECTA Orientation

TECTA offers five, free, 30-hour specialized Orientations: Center-Based, Infant/Toddler, Family Child Care, School-Age, and Administrator. Each Orientation covers core knowledge and best practices in a series of fun and interactive modules. TECTA orientations are TDHS and TrainTN-approved and available in-person and online.

### Child Development Associate® (CDA) Credential™ Support

TECTA provides Infant/Toddler, Preschool, and Family Child Care CDA Credential™ support by hosting workgroups, providing technical assistance, and offering scholarships for the credential application fee for each eligible participant. The initial CDA® Credential preparation courses also progress toward a Technical Certificate and degrees in Early Childhood Education.

### Tennessee Early Childhood Program Administrator Credential (TECPAC)

TECPAC is awarded to child care program directors and assistant directors that demonstrate specific competencies for effective leadership and management of child care programs. Contact your local TECTA office to learn more about the Leadership Pathway.

### Tuition Support for Higher Education

Early childhood educators who complete a TECTA Orientation are eligible for academic advisement and tuition support at any Tennessee post-secondary institution including TCATs, community colleges, and universities offering early childhood education courses.

### TECTA High School Equivalency Program

High School students who complete Early Childhood Education Careers I & II courses with a grade of 'B' or higher can earn a TECTA Orientation Equivalency Certificate, making them eligible for TECTA tuition support at any Tennessee post-secondary institution including TCATs, community colleges, or universities offering Early Childhood Education courses.

### TECTA Infant/Toddler Credential

The TECTA I/T Credential is available for all early educators caring for infants or toddlers. The available instruction builds on the I/T CDA® and includes training modules combined with coaching, reflective observations, and peer learning. Contact your local TECTA office to learn more about the new Infant/Toddler Credential and the TECTA Infant/Toddler Pathway.

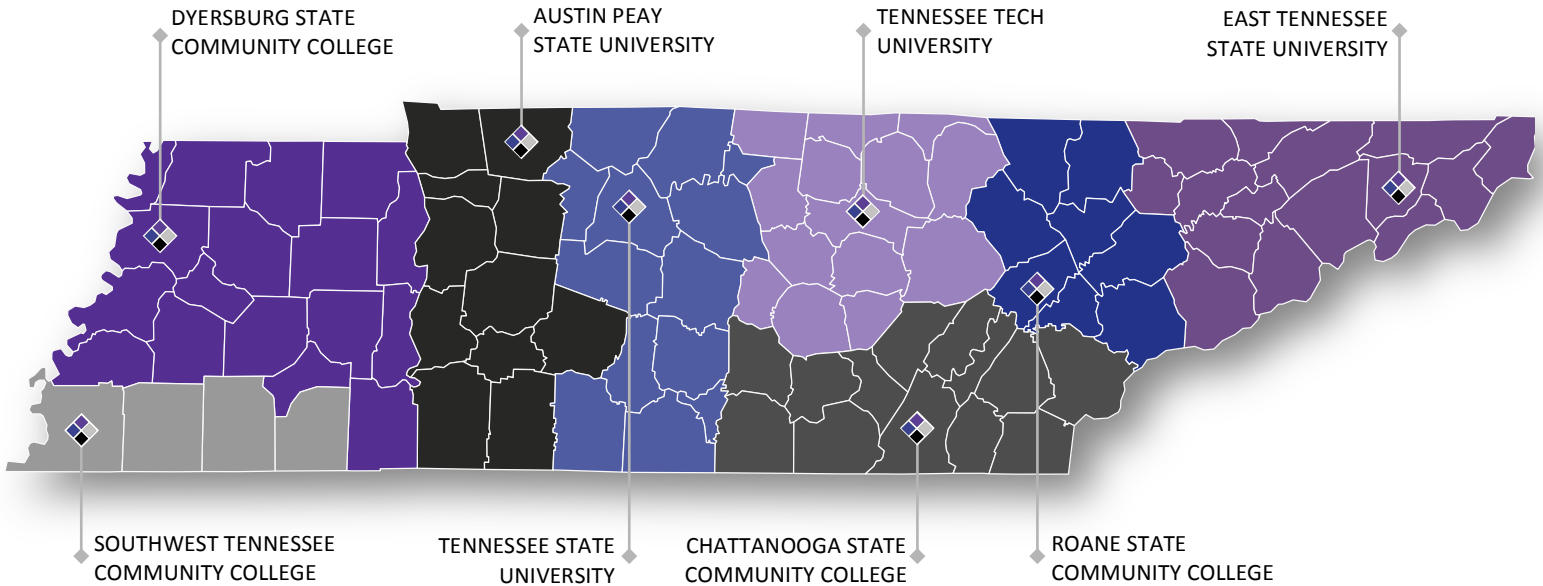


This Project is funded by the Center of Excellence of Learning Sciences at Tennessee State University through a contract with the Tennessee Department of Human Services. TSU-21-010(B)-7c-61075 - Tennessee State University is an AA/EEO employer.



# CONTACT THE TECTA SITE IN YOUR REGION TO GET STARTED!

TECTA staff are available to help you get started on your pathway of professional development.



Visit [www.tecta.info](http://www.tecta.info) to sign up for Orientation, download forms, and learn more about TECTA's academic and training support programs.

#### **Austin Peay State University**

637 8th St  
Clarksville, TN 37040  
931-221-7585

#### **Chattanooga State Community College**

4501 Amnicola Highway  
Chattanooga, TN 37406  
423-697-2697

#### **Dyersburg State Community College**

Gibson County Center  
2071 Hwy. 45 By-Pass  
Trenton, TN 38382  
731-222-5145

#### **East Tennessee State University**

Clemmer College, Warf Pickel Hall  
Center for Early Childhood  
128 North Dossett Dr.  
Johnson City, TN 37614

#### **Roane State Community College**

701 Briarcliff Avenue  
Oak Ridge, TN 37830  
865-481-2034

#### **Southwest Tennessee Community College**

737 Union Avenue, M 316  
Memphis, TN 38103  
901-333-5541

#### **Tennessee State University**

3500 John A. Merritt Blvd.  
Nashville, TN 37209  
615-277-1697

#### **Tennessee Tech University**

PO Box 5123  
Cookeville, TN 38505  
931-372-6561

**FOLLOW US:**



[facebook.com/TrainWithTECTA](https://www.facebook.com/TrainWithTECTA)



[@\\_tecta](https://www.instagram.com/_tecta)



This Project is funded by the Center of Excellence of Learning Sciences at Tennessee State University through a contract with the Tennessee Department of Human Services.

TSU-21-010(B)-7c-61075 - Tennessee State University is an AA/EEO employer.







A statewide program to support, promote and strengthen the profession of licensed family child care educators, thereby enriching the lives of providers, children, families, and communities.



### Peer to Peer Mentoring

The Tennessee Family Child Care Network offers training and supports using a relationship-based peer mentoring approach, where seasoned family child care providers offer guidance and expertise in high quality home-based early childhood education.



### Linkage and Engagement

The Network links providers to resources and partnering organizations, engages providers through regional and statewide conferences, and promotes entrepreneurship and small business development opportunities.



### New Provider Support

Network Advisors support new providers through relationship-based professional development that enriches the home-based program, encourages the provider, and offers guidance for program success and positive impacts for children in their care.



### National FCC Child Development Associate® (CDA) Credential™

The Child Development Associate® (CDA) Credential™ is the most widely recognized credential in Early Childhood Education (ECE) and is a key stepping stone on the path of career advancement in ECE. The Network offers non-academic courses that support and nurture the emotional, physical, intellectual, and social development of children.



### NAFCC Accreditation Support

NAFCC Accreditation is recognized as one of the highest indicators of quality in a home-based care program. Family child care providers achieve this high level of quality through a process that examines all aspects of a family child care program. Licensed family child care providers who want to earn NAFCC accreditation will be supported by the Network throughout the entire process, from self-study to renewal.

For more information, visit [www.tfccn.org](http://www.tfccn.org) and follow us:  [facebook.com/TFCCN](https://www.facebook.com/TFCCN) and  [@tennesseefccn](https://www.instagram.com/tennesseefccn).



# Child Care WAGES<sup>®</sup> TENNESSEE

## CONTACT OUR OFFICE

[www.tnwages.org](http://www.tnwages.org)  
[wages@signalcenters.org](mailto:wages@signalcenters.org)  
(423) 698-8528 ext. 650, 651

## WHAT WE DO

A vital piece of providing a quality early learning environment is having highly qualified educators who remain consistent in the classroom. The WAGES program promotes this environment by offering education-based salary supplements to educators who work in licensed child care programs.

Eligible educators can receive anywhere from \$600 to \$7,800 annually, deposited directly into their bank accounts to use however they wish. Awards are based on the number of early childhood college courses completed by the educator. Review the eligibility requirements below to see if you qualify to receive a salary supplement through Child Care WAGES<sup>®</sup> Tennessee today.

## WHO MAY QUALIFY

A WAGES supplement is available to early childhood educators who meet the following criteria:

1. Work in a Tennessee Department of Human Services licensed child care program
2. Earn \$20 or less per hour
3. Have one of the education levels listed in our Salary Supplement Scale (credits must be from a regionally accredited school)
4. Have worked 10 hours a week for six months in the same licensed child care program with children under age five
5. Be employed at this same licensed child care program when funding is available and a final confirmation has been completed

## WHAT WE NEED



**COMPLETED APPLICATION**  
(Scan QR Code above)



**RECENT PAYSTUB**



**OFFICIAL COLLEGE  
TRANSCRIPT**

Need help with TDHS and CCDF  
partner child care resources?

Contact the Help Desk at:

833-834-7227

TDHS\_CCP@utk.edu

Monday - Saturday

7 a.m. - 9 p.m. CT

Or visit

[TNChildCareHelpDesk.org](https://TNChildCareHelpDesk.org)

Tennessee Department of Human Services

505 Deaderick St.

Nashville, TN 37243

[www.tn.gov/humanservices](http://www.tn.gov/humanservices)

 @TNHumanServices

 @TNHumanServices

 @TNHumanServices