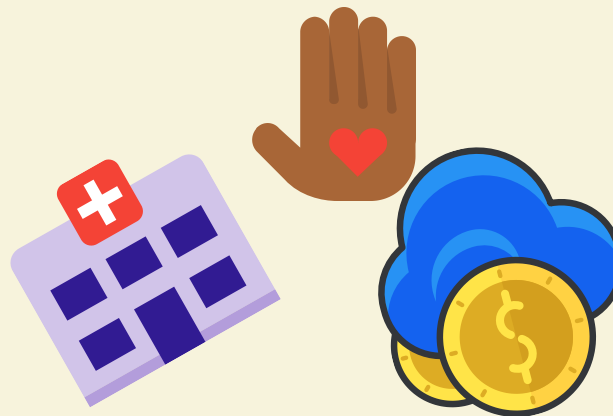


Tennessee Employees Charitable Campaign



Remember the campaign ends **December 8th**, and donations are not deducted until January 2024.

In **2022**, state employees pledged **\$159,514.36** in donations to participating charitable organizations serving a wide variety of needs in communities across our state.



Your support of the organizations participating in this campaign will translate directly to support for your fellow Tennesseans in the areas of health, medical research, human services and social issues.



You can participate in the campaign by making a one-time donation or a monthly donation in the amount of your choice. Another way to contribute is the “Buck-A-Week” program.