



FREELAND MARTZ
ATTORNEYS

M. Reed Martz
Admitted in AL, GA, MS, & TN

November 6, 2024

Via Certified Mail and Email

G. Graham Perry III, ABD
Historic Preservation Specialist-Cemeteries
Tennessee Historical Commission
State Historic Preservation Office
2941 Lebanon Pike
Nashville, TN 37214
graham.perry@tn.gov

TDOA Archeologist Benjamin Nance
at Benjamin.Nance@tn.gov

RE: Relocation of two private cemeteries in Maury County, Tennessee
Freeland Martz No. 04153

To Whom It May Concern,

This letter serves as notice pursuant to Tenn. Code Ann. § 46-4-103(c) that Star Hill, LLC, a Tennessee limited liability company with a principal business address of 5800 One Perkins Place Dr., Ste. 6A, Baton Rouge, LA 70808-9118, has filed a Petition for Terminating Use of Land as Burial Ground and for Removal and Reinterment of Remains of Decedents in the Chancery Court for Maury County.

The cemetery is located on the former Monsanto Chemical Company property in Maury County. The persons believed to be buried in the cemetery, along with their dates of birth and death, are identified in the enclosed Petition.

Based on these dates, the cemetery is approximately 170 years old. Pursuant to Tenn. Code Ann. § 46-4-103(c)(1)(B), an exact copy of the Petition filed in the Chancery Court is enclosed with this letter.

Please let me know if you need any further information or documentation from me or if you prefer for these materials to be transmitted in a manner other than email.

Sincerely,

FREELAND MARTZ, PLLC

A handwritten signature in blue ink that reads "M. Reed Martz". The signature is fluid and cursive, with the first name "M." and last name "Martz" clearly legible.

M. Reed Martz

IN THE CHANCERY COURT OF MAURY COUNTY, TENNESSEE
STAR HILL, LLC

v.

CAUSE No.

24-561



THE UNKNOWN AND UNIDENTIFIED SURVIVORS OF:
FRANCES L. HODGE; MARY HODGE; JOSEPH HODGE;
JOHN L. HODGE; POLLY JOYCE; and WILLIAM WALLIS
JENNINGS; and UNKNOWN DEFENDANTS 1-100

DEFENDANTS

**PETITION FOR TERMINATING USE OF LAND AS BURIAL GROUND and
FOR REMOVAL AND REINTERMENT OF REMAINS OF DECEDENTS**

COMES NOW, Star Hill, LLC, pursuant to TENN. CODE ANN. § 46-4-103, to petition the Court to terminate the use of the within-described land as burial grounds and for the removal and reinterment of the remains of those persons buried there, stating in support thereof the following, to-wit:

1. Petitioner Star Hill, LLC, is a Tennessee limited liability company, in good standing with the Tennessee Secretary of State and fully authorized to conduct business within the State.
2. Star Hill, LLC is the owner of record of real property located in the 9th and 10th Civil Districts of Maury County, Tennessee. In particular, Star Hill owns an eponymous piece of land that was part of a larger tract formerly owned by the Monsanto Chemical Company. The property is located approximately five miles northwest of downtown Columbia, Tennessee, between Highway 7 and Williamsport Highway (State Route 50).

3. Because the property is located within Maury County, Tennessee, jurisdiction and venue are proper in this Court pursuant to TENN. CODE ANN. § 46-4-103(a).
4. This matter involves two cemeteries, both of which are abandoned and are heavily vegetated due to neglect and being permitted to exist in an abandoned condition long before Star Hill, LLC purchased the property. The cemeteries are, as a practical matter, inaccessible. Previously this tract of land was used by the Monsanto Chemical Company for manufacturing, mining, and other purposes.
5. Some of the headstones are broken and others are so weathered that the names and other engraved information are unreadable. Incorporated herein by reference as Exhibit 2 are photographs and annotations made by Barge Design Solutions of the present condition of the cemeteries.
6. The first burial ground, known as Hodge Cemetery, is a family cemetery located on the northeastern portion of the property. The burial ground is approximately 0.17 acres. The known deceased buried here are: Frances Hodge; Mary Hodge; Joseph Hodge; and John L. Hodge.
7. The second burial ground, known as Joyce Cemetery, is a family cemetery located on the southern portion of the property. The burial ground is approximately 0.10 acres. The cemetery has about 12 headstones for the deceased within its boundary. The names of the deceased are unknown except for: Polly Joyce; and William Wallis Jennings.
8. A geophysical survey of the Joyce and Hodge cemeteries was conducted on August 1-2, 2022, by Forrest Environmental Services, Inc (FES). A copy of FES's

Geophysical Survey is attached hereto as Exhibit 1 and incorporated by reference. This survey detected three anomalies in the Hodge Cemetery from GPR Line 1 and five anomalies in the Joyce Cemetery between GPR Line 2 and GPR Line 3. These anomalies appear to be burial sites. The geophysical survey was limited due to the overgrown and wooded nature of the cemeteries.

9. Petitioner, through the undersigned counsel, has diligently searched for potential heirs of the persons buried at the Cemetery. Counsel has researched heirs through various online databases, including the National Archives, Find-a-Grave, and Family Search. The undersigned counsel's staff identified the Defendants/Interested Persons, defined by TENN. CODE ANN. § 46-4-102, and required to be joined in this matter as defendants by TENN. CODE ANN. § 46-4-103(b) as follows:

- a. As to Frances Hodge, who was born about 1816 and died March 30, 1852:

- i. Frances L. Hodge, born about 1949, and whose whereabouts are presently unknown;

- b. As to Mary Hodge:

- i. None identified.

- c. As to Joseph Hodge:

- i. None identified.

- d. As to John L. Hodge, who was born about 1875:

- i. None identified.

- e. As to Polly Joyce:

- i. None identified.

f. As to William Wallis Jennings:

i. None identified.

10. For any unknown and/or nonresident Interested Persons, Petitioner requests that the Court cause notice to be made to all unknown and/or nonresident Interested Persons by publication in a newspaper of general circulation in Maury County, Tennessee, for four consecutive weeks. TENN. CODE ANN. § 46-4-103(b) provides, in part, that: "Nonresident and unknown defendants may be proceeded against by order of publication, and publication, in the manner provided by law." See also TENN. CODE ANN. § 21-1-204 (detailing service by publication in Tennessee) and/or TENN. R. CIV. PRO. 4.08 (constructive notice).
11. Petitioner will provide the requisite notice to the Tennessee Historical Commission pursuant to TENN. CODE ANN. § 46-4-103(c) by concurrently forwarding a copy of this Petition with an appropriate cover letter.
12. To the best of Petitioners' knowledge, no Native American graves are involved or affected, and therefore neither title 11 chapter 6, nor the Rules of the Tennessee Department of Environment and Conservation Chapter 0400-09-01 are implicated.
13. Petitioner's plans for the property involve commercial and industrial uses. The commercial activities immediately around the cemeteries will be inconsistent with due and proper reverence or respect for the memory of the dead.
14. The location of the cemeteries impedes the planned development and use.
15. The current location of the cemeteries is unsuitable as a resting place for the remains of the deceased. Continued use as a burial ground would be inconsistent with due

and proper reverence or respect for the memory of the dead because the burial grounds are abandoned, are in a neglected or abandoned condition, and because conditions or activities about or near the burial ground would render the further use of the burial ground inconsistent with due and proper reverence or respect for the memory of the dead, or for any other reason unsuitable for those purposes.

16. Petitioner prays that this Court terminate the use of the cemeteries as a burial ground and to have the remains of the decedents removed from the current location of the cemeteries and reburied in a suitable new location on the property in accordance with TENN. CODE ANN. § 46-4-103(a). This new location, a suitable reinternment site, will be in the southwest corner of the tract, immediately adjacent to an existing cemetery named "Concord Cemetery," with appropriate and necessary rights of access for all who wish to visit the cemeteries.

A TRACT OR PARCEL OF LAND LOCATED WITHIN THE 9TH CIVIL DISTRICT OF MAURY COUNTY, TENNESSEE, MORE PARTICULARLY DESCRIBED AS FOLLOWS:

COMMENCING AT A 4 INCH BY 4 INCH CONCRETE MONUMENT WITH A DISK STAMPED "MONSANTO" BEING THE SOUTHERN MOST CORNER OF THE HARLAN CEMETERY TRACT HAVING A TENNESSEE STATE PLANE COORDINATE POSITION OF N:484,309.62' AND E: 1,636,808.67' REFERENCED TO NAD 1983 (2011) ADJUSTMENT, AND FURTHER DESCRIBED AS SHOWN ON PAGE 12 OF THE "ALTA/ASCM LAND TITLE SURVEY FOR LAND SOUTH TN, LLC 1ST, 2ND, 8TH, AND 9TH CIVIL DISTRICT, MAURY COUNTY, COLUMBIA, TENNESSEE" AS RECORDED IN PLAT BOOK P18, PAGE 241 IN THE REGISTER'S OFFICE OF MAURY COUNTY, TENNESSEE, THENCE SOUTH 74 DEGREES 16 MINUTES 13 SECONDS WEST, 1394.84 FEET TO THE POINT OF BEGINNING; THENCE FROM THE POINT OF BEGINNING, NORTH 79 DEGREES 39 MINUTES 17 SECONDS WEST, 40.20 FEET TO A 4 INCH BY 4 INCH CONCRETE MONUMENT STAMPED "MONSANTO" MARKING THE SOUTHEAST CORNER OF THE CONCORD CEMETERY PROPERTY NOW OR FORMERLY OWNED BY CONCORD CEMETERY, INC AS RECORDED IN DEED BOOK 1152, PAGE 591 IN THE REGISTER'S OFFICE OF MAURY COUNTY, TENNESSEE; THENCE ALONG THE

EAST LINE OF SAID CONCORD CEMETERY, NORTH 10 DEGREES 21 MINUTES 33 SECONDS EAST, 322.14 FEET TO A 4 INCH BY 4 INCH CONCRETE MONUMENT STAMPED "MONSANTO" MARKING THE NORTHEAST CORNER OF SAID CONCORD CEMETERY; THENCE LEAVING SAID EAST LINE AND ALONG THE NORTH PROPERTY LINE OF SAID CONCORD CEMETERY, NORTH 79 DEGREES 22 MINUTES 06 SECONDS WEST, 70.35 FEET TO A 5/8 INCH REBAR STAMPED "BWSC CA-106-LS"; THENCE CONTINUING ALONG SAID NORTH LINE, NORTH 82 DEGREES 39 MINUTES 25 SECONDS WEST, 194.20 FEET TO A 4 INCH BY 4 INCH MONUMENT STAMPED "MONSANTO" MARKING THE NORTHWEST CORNER OF SAID CONCORD CEMETERY; THENCE LEAVING SAID NORTH LINE, NORTH 10 DEGREES 18 MINUTES 39 SECONDS EAST, 6.86 FEET; THENCE SOUTH 84 DEGREES 50 MINUTES 29 SECONDS EAST, 331.66 FEET; THENCE, SOUTH 14 DEGREES 35 MINUTES 11 SECONDS WEST, 350.13 FEET TO THE POINT OF BEGINNING AND CONTAINING 0.50 ACRES (21,639 SQUARE FEET), MORE OR LESS. SUBJECT TO: EASEMENTS, RIGHTS OF WAY, RIGHTS, RESTRICTIONS AND COVENANTS RECORDED OR UNRECORDED.

A suitable easement will also be granted, all as shown in cumulative Exhibit 4.

17. This new cemetery location is a location for which Petitioner has no current plans for development. As noted in Exhibit 4, Petitioner will provide an adequate permanent right and easement to use the place of reinterment for reinterment with adequate permanent right and easement of access to the place of reinterment for visitation.
18. Petitioner will perform the removal and reinterment of all the remains with due care and decency, and suitable memorial or memorials will be erected at the place of reinterment.

WHEREFORE, PREMISES CONSIDERED, Star Hill, LLC, prays that this Court:

- A. In accordance with TENN. CODE ANN. §§ 21-1-204 and 46-4-103, enter an order authorizing notice to all unknown Interested Persons by publication in a newspaper of general circulation in Maury County, Tennessee, for four consecutive weeks;

- B. In accordance with TENN. CODE ANN. §§ 46-4-101 and 46-4-104, enter an order and adjudication finding that the current location for the cemeteries is unsuitable as a resting place for the remains of the decedents because it is abandoned, it is in an abandoned and neglected state, and because the conditions and activities about or near the cemeteries are inconsistent with due and proper reverence or respect for the memory of the dead;
- C. In accordance with TENN. CODE ANN. § 46-4-104, enter an order approving the Petitioner's plan to have the remains of all deceased persons buried in the burial ground removed from the burial ground and reburied in a suitable repository to be obtained for that purpose before their removal from the burial ground, and authorizing the terminating the use of, and all rights and easements to use, the ground as a burial ground, and all rights and easements incident or appurtenant to the ground as a burial ground; and
- D. For the relief stated above plus all other relief, general and specific, appropriate in the premises.

STAR HILL, LLC

BY: FREELAND MARTZ, PLLC

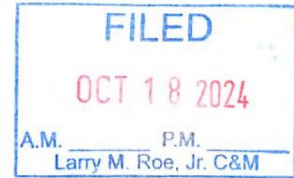

M/Reed Martz, BPR 30632

Freeland Martz, PLLC
302 Enterprise Drive., Ste. A
Oxford, Mississippi 38655
(662) 234-1711
reed@freelandmartz.com
Attorney for Star Hill, LLC

Sidney G. Brian, the Manager of Star Hill, LLC, stated pursuant to Tenn. R. Civ. P. 72, on his oath that "I declare (or certify, verify or state) under penalty of perjury that the foregoing is true and correct."



Signature of Declarant 9/28/2024



**Geophysical Survey
Joyce and Hodge Cemeteries
Star Hill Site
Monsanto Road
Columbia, Tennessee**

Prepared For:

Barge Design Solutions

615 3rd Avenue South, Suite 700
Nashville, Tennessee 37210

Prepared By:

Forrest Environmental Services, Inc.



305th Cloven Court
Oak Hill, Virginia 20171
(703) 648-9090

November 2022

FES Project No. 22203

EXHIBIT 1

Table of Contents

Section	Page
1.0 Introduction	1
2.0 Equipment and Procedures	2
3.0 Survey Results and Conclusions	4

List of Figures

Figure	
1	Geophysical Area Map 5
2	Geophysical Site Map - Hodge Cemetery 6
3	Geophysical Site Map - Joyce Cemetery 7
4	GPR Line 1 - Hodge Cemetery 8
5	GPR Lines 2 and 3 - Joyce Cemetery 9

1.0 Introduction

Forrest Environmental Services, Inc. (FES) performed a geophysical survey at the Hodge and Joyce Cemeteries located on Monsanto Road in Columbia, Tennessee on the 1st and 2nd August 2022. The investigation consisted locating suspected marked and unmarked graves.

The preliminary geophysical survey included a GPR survey at two locations that includes the Hodge and Joyce cemeteries. GPR data was collected along linear 2-foot traverses at 0.1 feet measurements that are connected to a TOPCON GPS within a sub-meter accuracy. The survey boundaries covered areas of approximately 60 feet by 60 feet at the Hodge Cemetery and approximately 100 feet by 100 feet at the Joyce Cemetery that were selected by a Barge Design Solutions representative

The Hodge Site was cleared west of the three tombstones. The Hodge site survey was conducted west of the cleared area. North, south, and east of the three tombstones consisted very overgrown thickly wooded areas that was not included with the GPR survey.

The Joyce Site was conducted adjacent to the tombstones on top of the hill. The GPR survey was limited to small areas near the tombstone because of the very overgrown thickly wooded area.

Survey locations and physical features are shown in Figures 1 through 3. Details of the geophysical survey are described in the following sections.

2.0 Equipment and Procedures

The GPR survey was performed using a Noggin Smart Cart with a shielded 250 megahertz (MHz) antenna. GPR is an EM method that detects interfaces between subsurface materials with contrasting dielectric constants. The GPR system consists of an antenna that consists of a transmitter and receiver that were connected to a computer that processes the received signal and locates the position of data collection.

The transmitter radiates repetitive short-duration EM waves into the earth from the antenna as it is moved across the ground surface. These radar waves are reflected back to the receiver by interfaces between materials with different dielectric constants. The intensity of the reflected signal is a function of the dielectric constant contrast at the interface, the conductivity of the material the wave is traveling through, and the frequency of the signal. Subsurface features that cause reflections are: 1) natural geologic conditions such as changes in sediment composition, bedding and cementation horizons, voids, and water content and 2) fill materials or changes in the subsurface such as soil backfill, buried debris, USTs, pipelines, and utilities. The controlling unit receives the signal from the antenna and produces a continuous cross-section of the subsurface interface reflections.

Depth of GPR signals is highly site-specific and is limited by signal attenuation or absorption of the subsurface. Signal attenuation is dependent on the electrical conductivity of subsurface materials. Signal attenuation is greatest in materials with high conductivity, such as clays or brackish groundwater, and lowest in low conductivity material, such as unsaturated sands or rock. GPR depth penetration is dependent on antenna frequency. Depth penetration increases with decreasing frequency; however, identification diminishes proportionally with smaller features. The depth penetration of this GPR survey was approximately 2.5 meters (8 feet) below surface for the 250 Mhz antenna.

The GPR survey used a 250 MHz antenna that was internally shielded from above ground and adjacent anthropogenic sources. The GPR survey was performed by a project geophysicist pulling the antenna along the ground. The location of the antenna along the transects lines were marked electronically from a survey wheel. Recorded data were collected at 0.1-foot intervals and stored on the laptop computer.

The GPR data were converted into a GPR depth model using Sensor's and Software pulse EKKO software. The GPR data was gained, migrated, and a low frequency response filter was included to the raw data.



Photo 1 - GPR meter at the Joyce Cemetery

3.0 Survey Results and Conclusions

The objective of the geophysical survey was to determine the presence of marked and unmarked suspected grave sites.

Hodge Cemetery

GPR Line 1 is located at the Hodge Cemetery adjacent to the three head stones (Figure 2). GPR Line 1 indicated three anomalies centered at approximately 2.5 feet North, 9 feet North, and 12.5 feet North about 3 feet below ground surface (Figure 4).

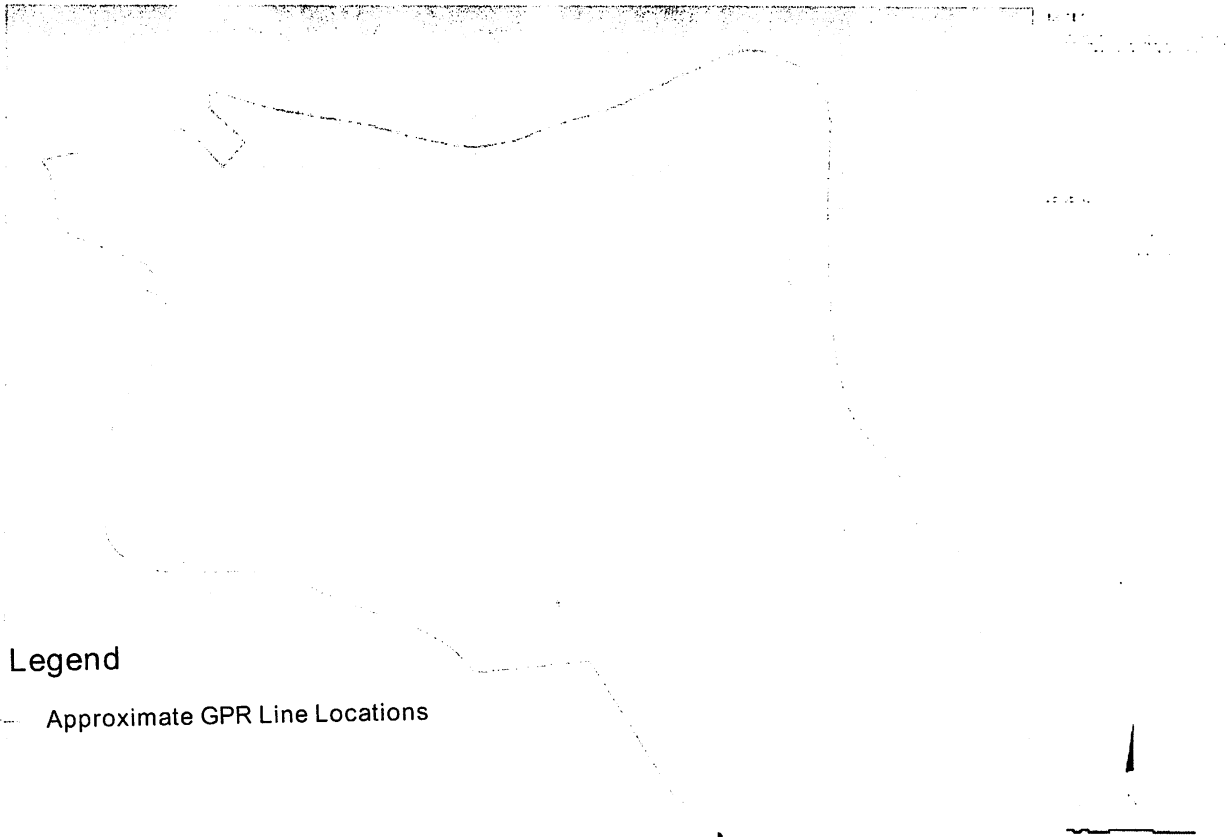
Joyce Cemetery

GPR Line 2 is located at the western section of the Joyce Cemetery area (Figure 3). GPR Line 2 indicated three anomalies centered at approximately 3 feet North, 9 feet North, and 13 feet North about 4 feet below ground surface (Figure 5).

GPR Line 3 is located at the eastern section of the Joyce Cemetery area (Figure 3). GPR Line 3 indicated three anomalies centered at approximately 5 feet North and 8 feet North about 4 feet below ground surface (Figure 5).

The geophysical survey was limited because of the overgrown wooded areas. The limited geophysical located three anomalies at the Hodge Cemetery site and five anomalies at the Joyce Cemetery site. The anomalies appear to be burial locations. Orange pin flags were placed in the field at the five anomalies identified by the GPR survey.

FES recommends clearing the areas adjacent to the Hodge and Joyce headstones to continue with a thorough GPR survey.



Legend

— Approximate GPR Line Locations

Forrest Environmental Services, Inc.



Oak Hill, Virginia
(703) 648-9090

www.forestenv.com

November 2022

shown

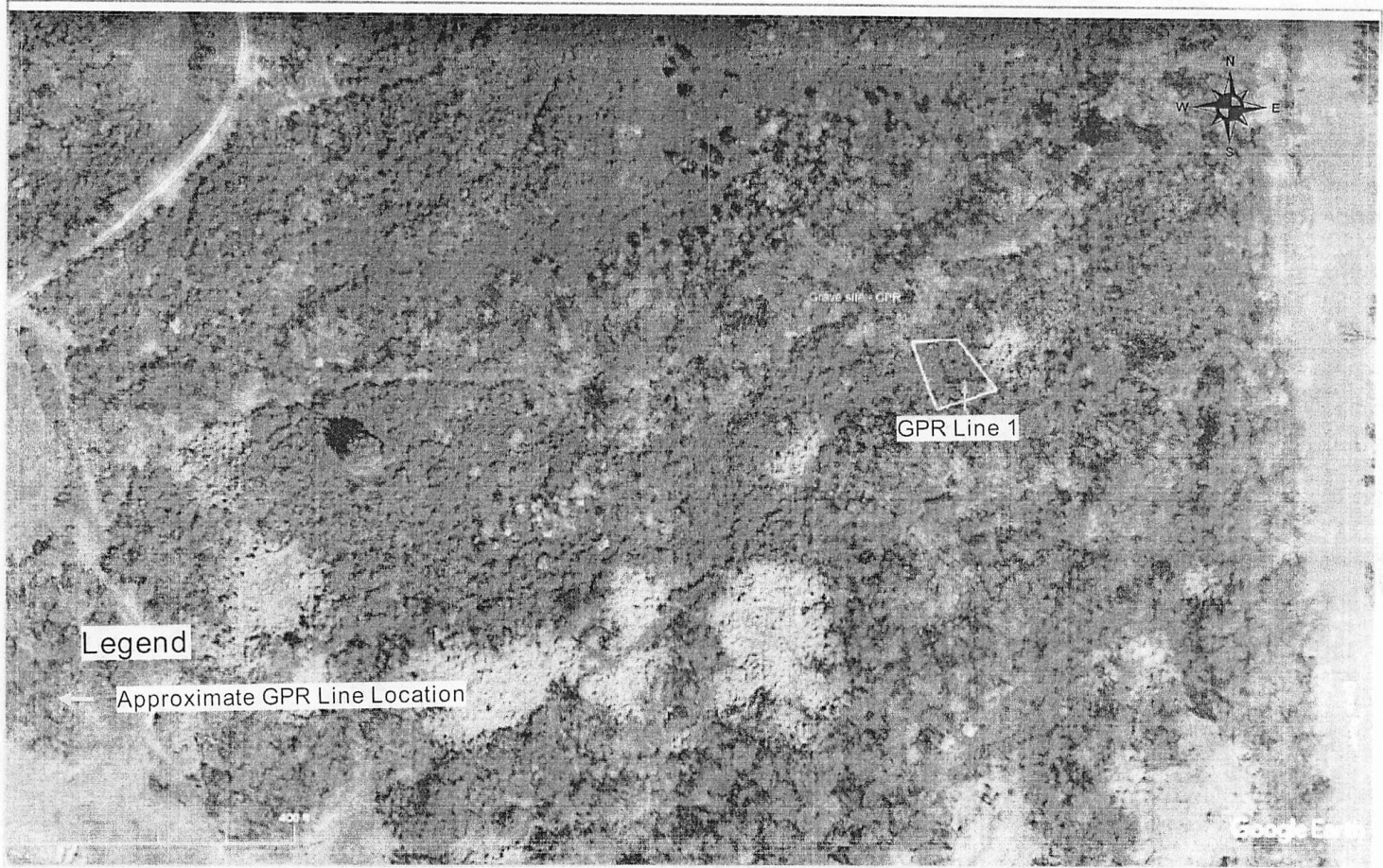
Geophysical Area Map
Star Hill Site
Monsanto Road
Columbia, Tennessee

22203

BJHCemCTNF1

Barge Design Solutions

1



Forrest Environmental Services, Inc.



Oak Hill, Virginia
(703) 648-9090
www.fesinc.net

November 2022

shown

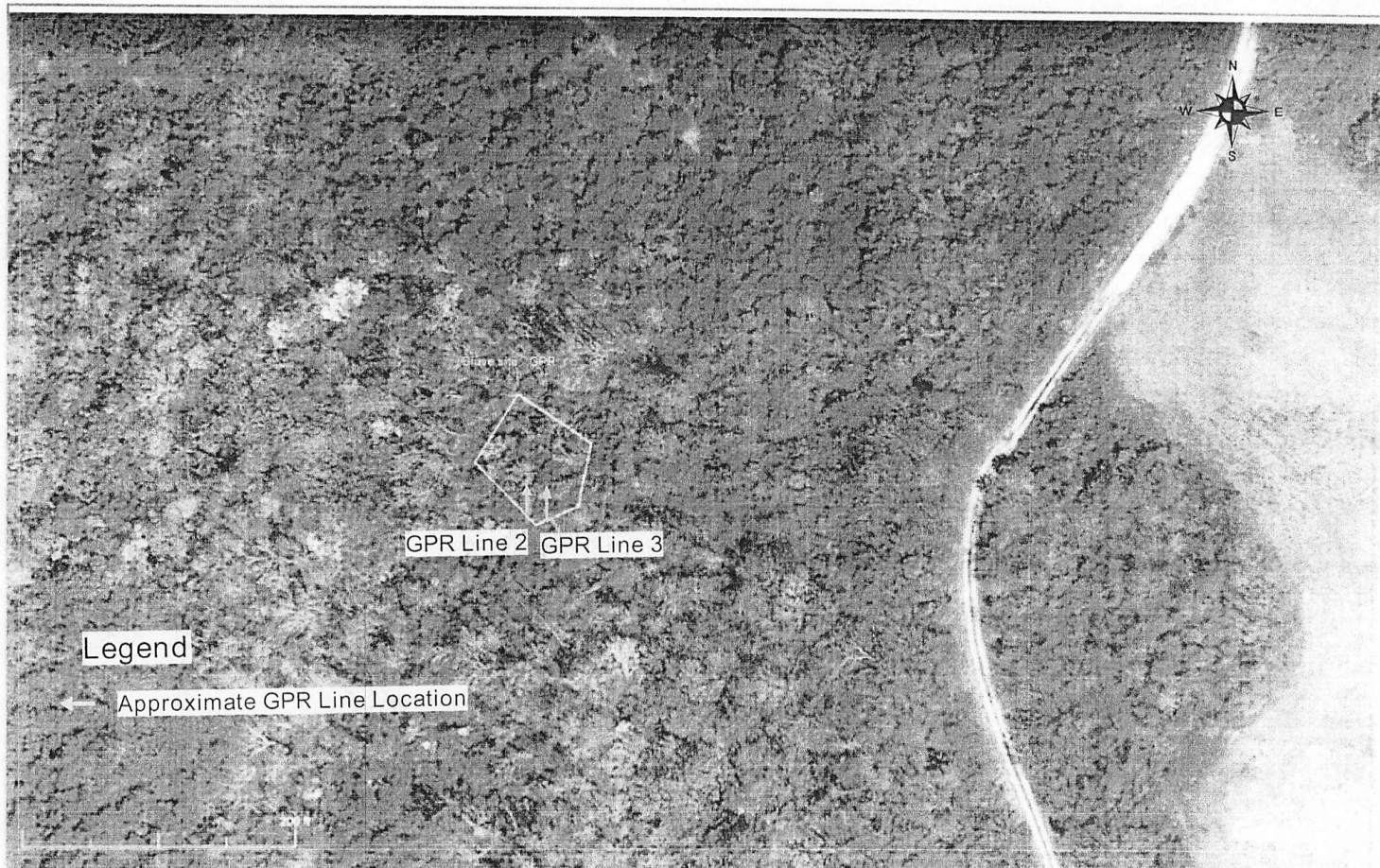
Geophysical Site Map
Hodge Cemetery
Monsanto Road
Columbia, Tennessee


22203

BJHCemCTNF2

Barge Design Solutions

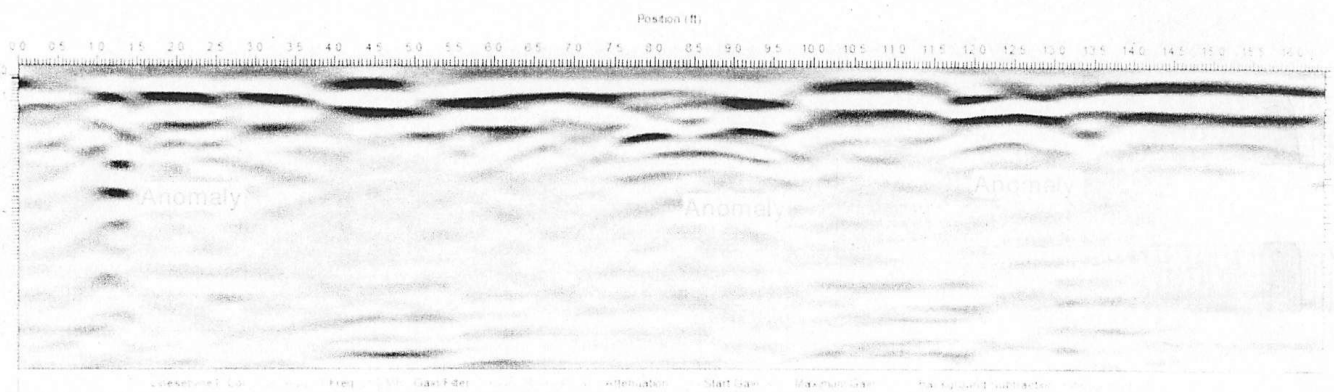
2



Forrest Environmental Services, Inc.  Oak Hill, Virginia (703) 648-9090 www.fesinc.net	November 2022	shown	Geophysical Site Map Joyce Cemetery Monsanto Road Coilumbia, Tennessee	
	22203	BJHCemCTNF2	Barge Design Solutions	3

South

North



Forrest Environmental Services, Inc.



Oak Hill, Virginia
(703) 648-9090
www.fesinc.net

November 2022

shown

GPR Line 1
Star Hill Site - Hodge Cemetery
Monsanto Road
Columbia, Tennessee

22203

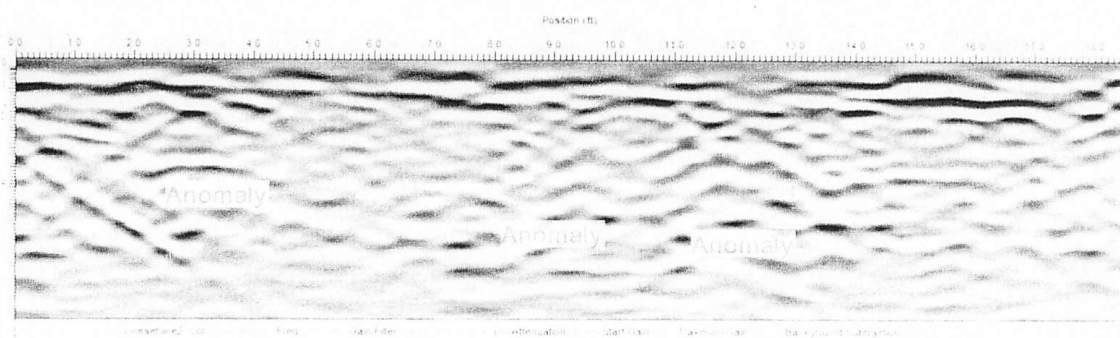
BJHCemCTNF4

Barge Design Solutions

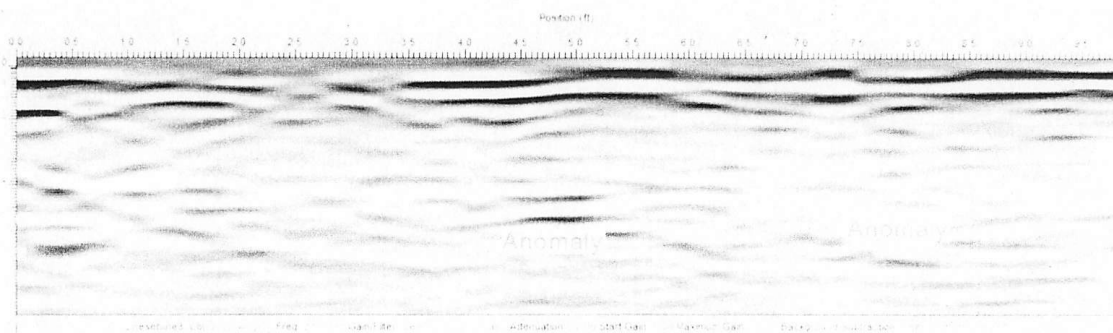
4

South

North



GPR Line 2



GPR Line 3

Forrest Environmental Services, Inc.



Oak Hill, Virginia
(703) 648-9090
www.fesinc.net

November 2022

shown


GPR Lines 2 and 3
Star Hill Site - Hodge Cemetery
Monsanto Road
Columbia, Tennessee


22203

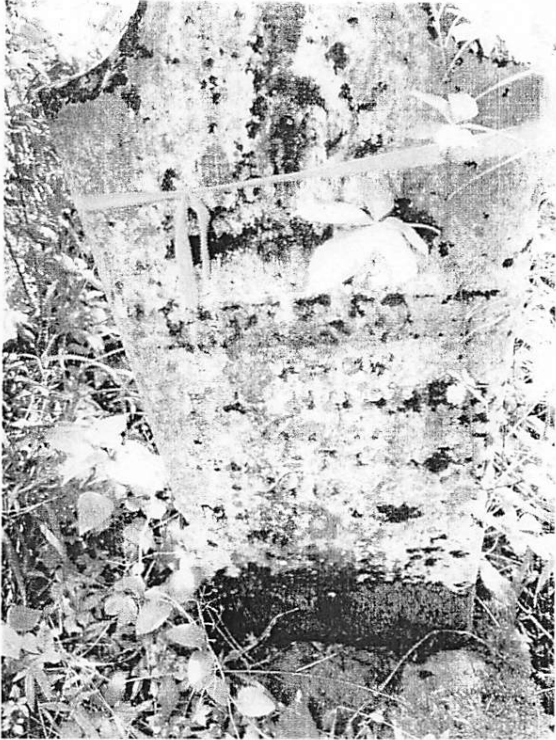
BJHCemCTNF5


Barge Design Solutions


5

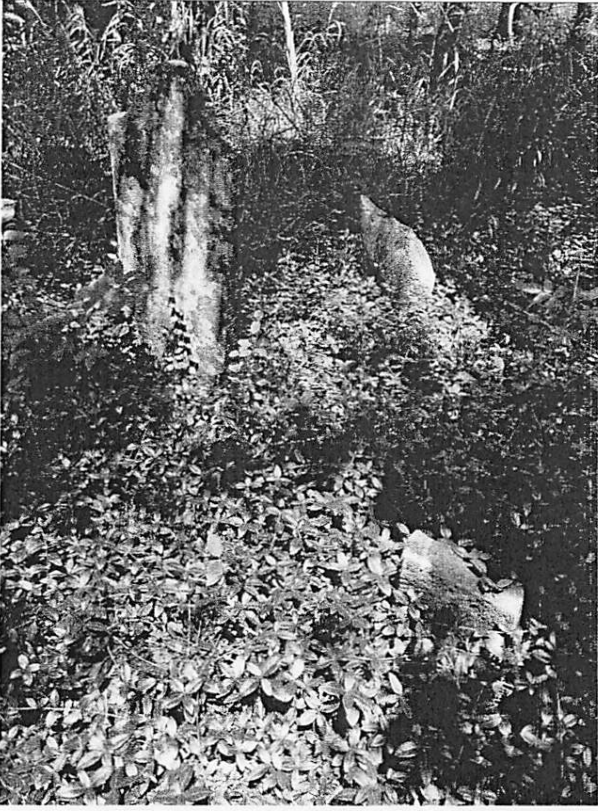
Hodge Cemetery	
Date: 06/01/23	
Description: Headstone for John L. Hodge and Joseph Hodge	


Hodge Cemetery	
Date: 06/01/23	
Description: Site conditions observed at Hodge Cemetery.	


Hodge Cemetery	
Date: 06/01/23	
Description: Mary Hodge's headstone at the gravesite.	


Hodge Cemetery	
Date: 06/01/23	
Description: Suspected Headstone in the brush near the gravesite.	

Hodge Cemetery	
Date: 06/01/23	
Description: Frances Hodge's Headstone at the gravesite.	

Joyce Cemetery	
Date: 06/01/23	
Description: Multiple broken headstones observed at the Joyce Cemetery.	

Joyce Cemetery	
Date: 06/01/23	
Description: Polly Joyce Headstone at the gravesite.	

Joyce Cemetery	
Date: 06/01/23	
Description: Site conditions at the Joyce Cemetery.	

Joyce Cemetery	
Date: 06/01/23	
Description: Footstone found at Joyce Cemetery.	

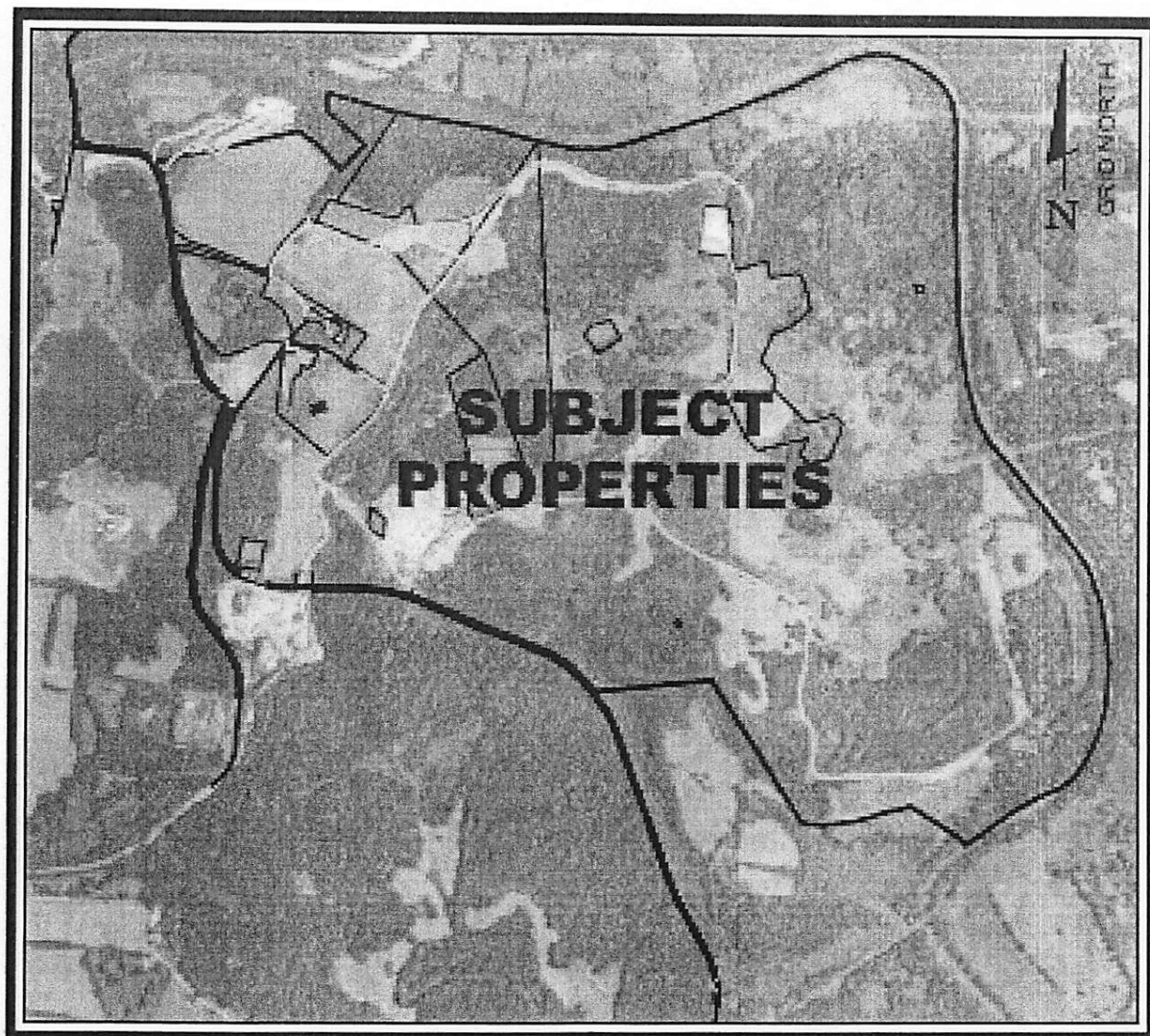
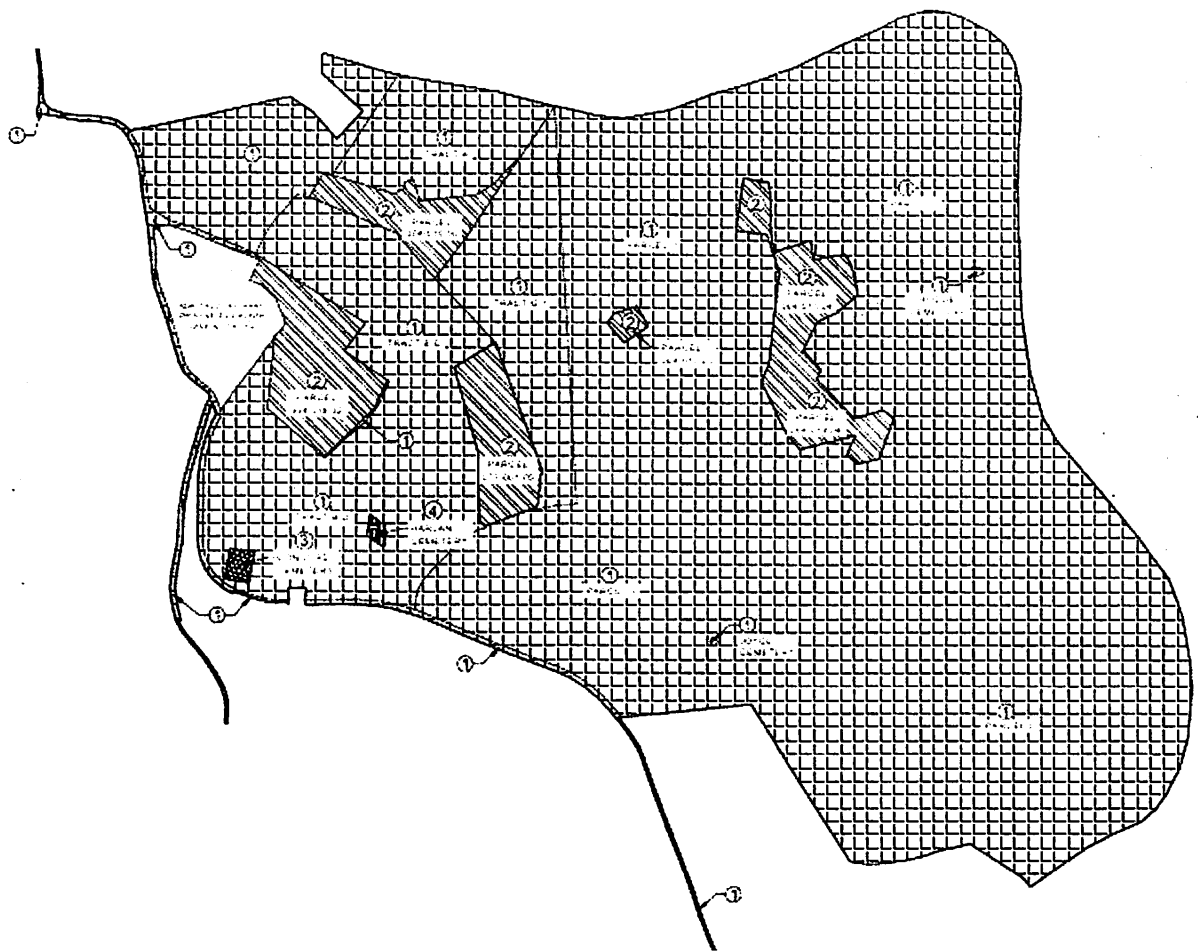
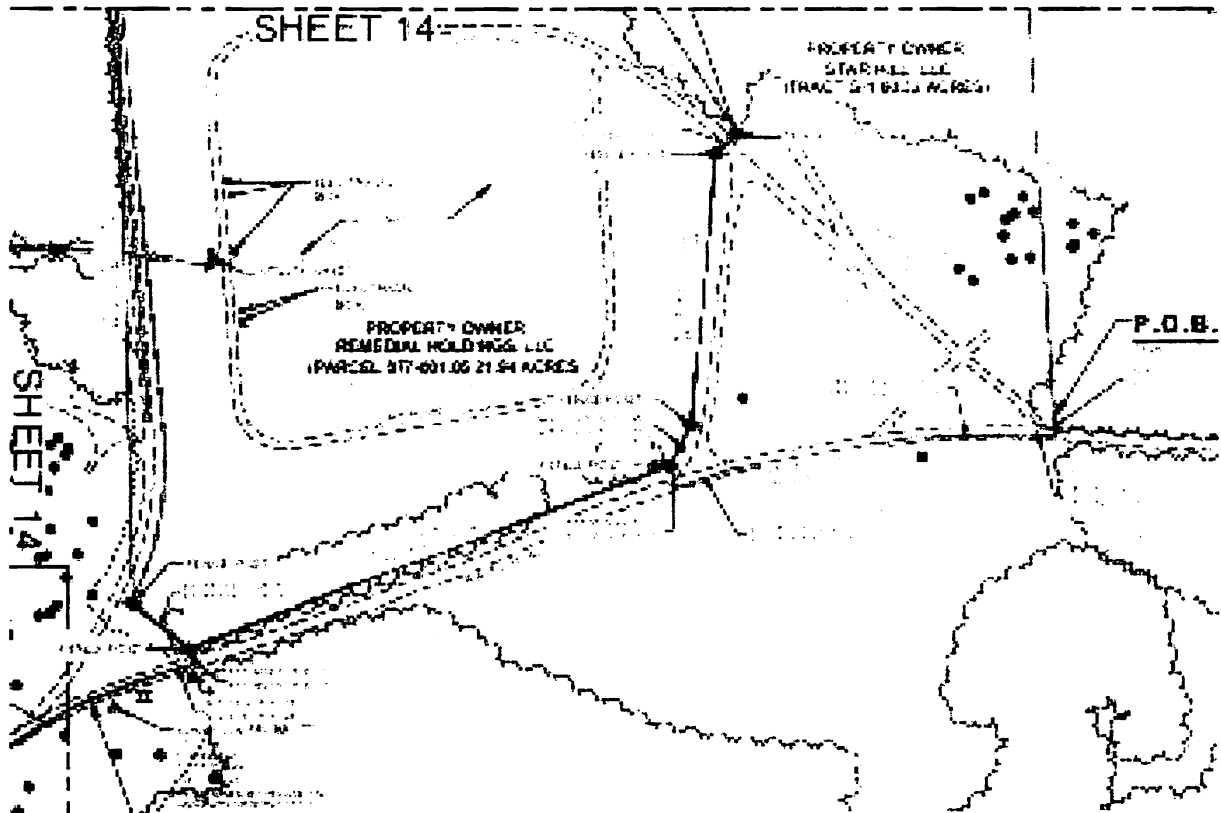



EXHIBIT 3







Abstract

FOIA b 7 - D

THE UNIVERSITY OF CHICAGO

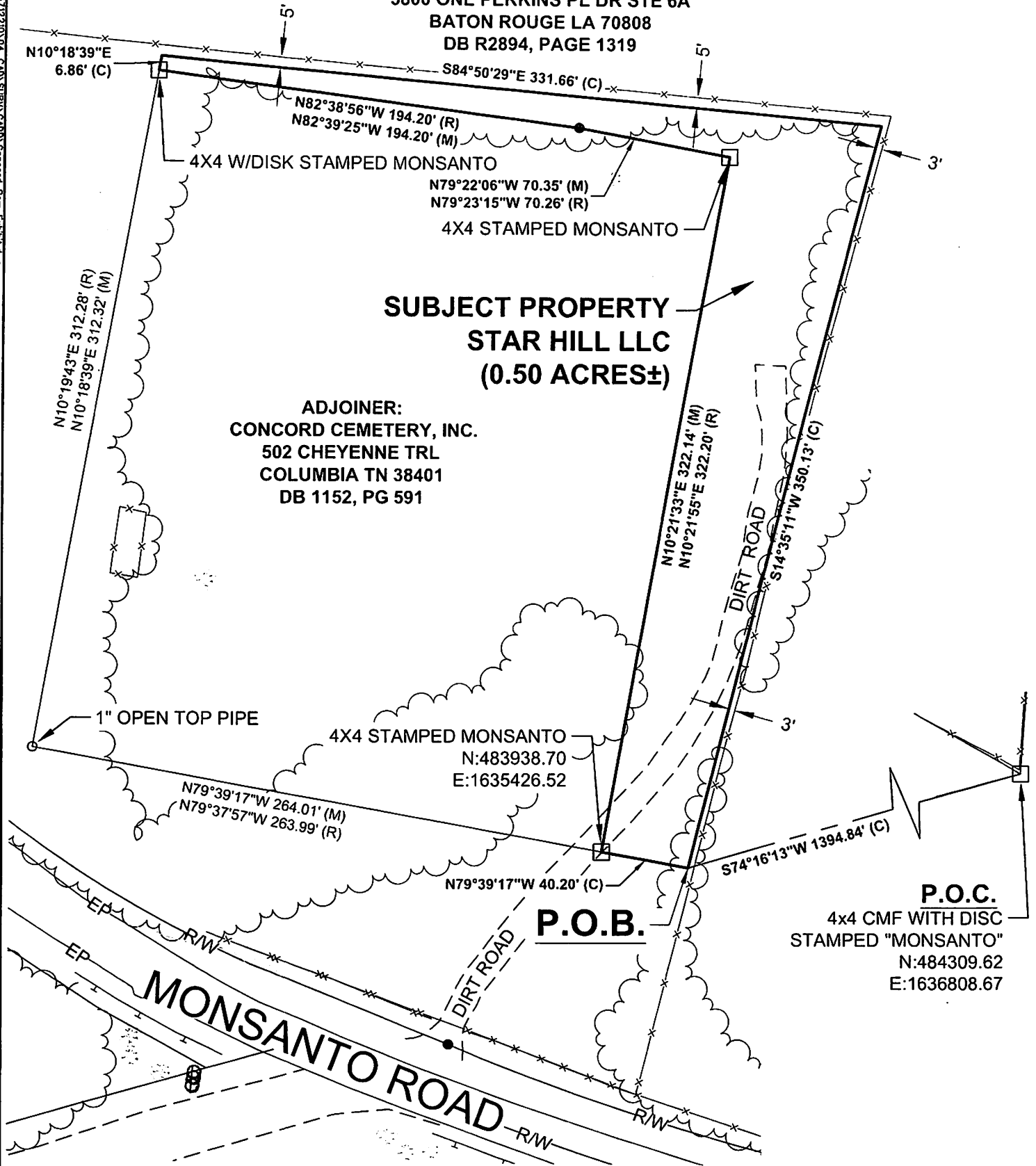
1. *Chlorophyll a* and *Chlorophyll b* content of leaves was determined by spectrophotometry using the method of Arnon and Whistler (1940).

SHEET 22

ADJOINER:
STAR HILL LLC
C/O TRINITY BUSINESS GROUP LLC
5800 ONE PERKINS PL DR STE 6A
BATON ROUGE LA 70808
DB R2894, PAGE 1319

ADJOINER:
CONCORD CEMETERY, INC.
502 CHEYENNE TRL
COLUMBIA TN 38401
DB 1152, PG 591

**SUBJECT PROPERTY
STAR HILL LLC
(0.50 ACRES±)**



SURVEYOR'S NOTES:

1. THIS DOCUMENT WAS CREATED FOR THE EXPRESS PURPOSE AND INTENT OF GRAPHICALLY SHOWING THE LOCATION OF REAL PROPERTY FOR THE INTENT OF FACILITATING A LAND TRANSACTION BETWEEN STAR HILL LLC AND CONCORD CEMETERY, INC.

GENERAL LEGEND

- PROPERTY CORNER
- 5/8" REBAR CAPPED STAMPED "BWSC CA-106-LS"
- EP— EDGE OF PAVEMENT

P.O.C.
4x4 CMF WITH DISC
STAMPED "MONSANTO"
N:484309.62
E:1636808.67



ORTH

LAND DESCRIPTION

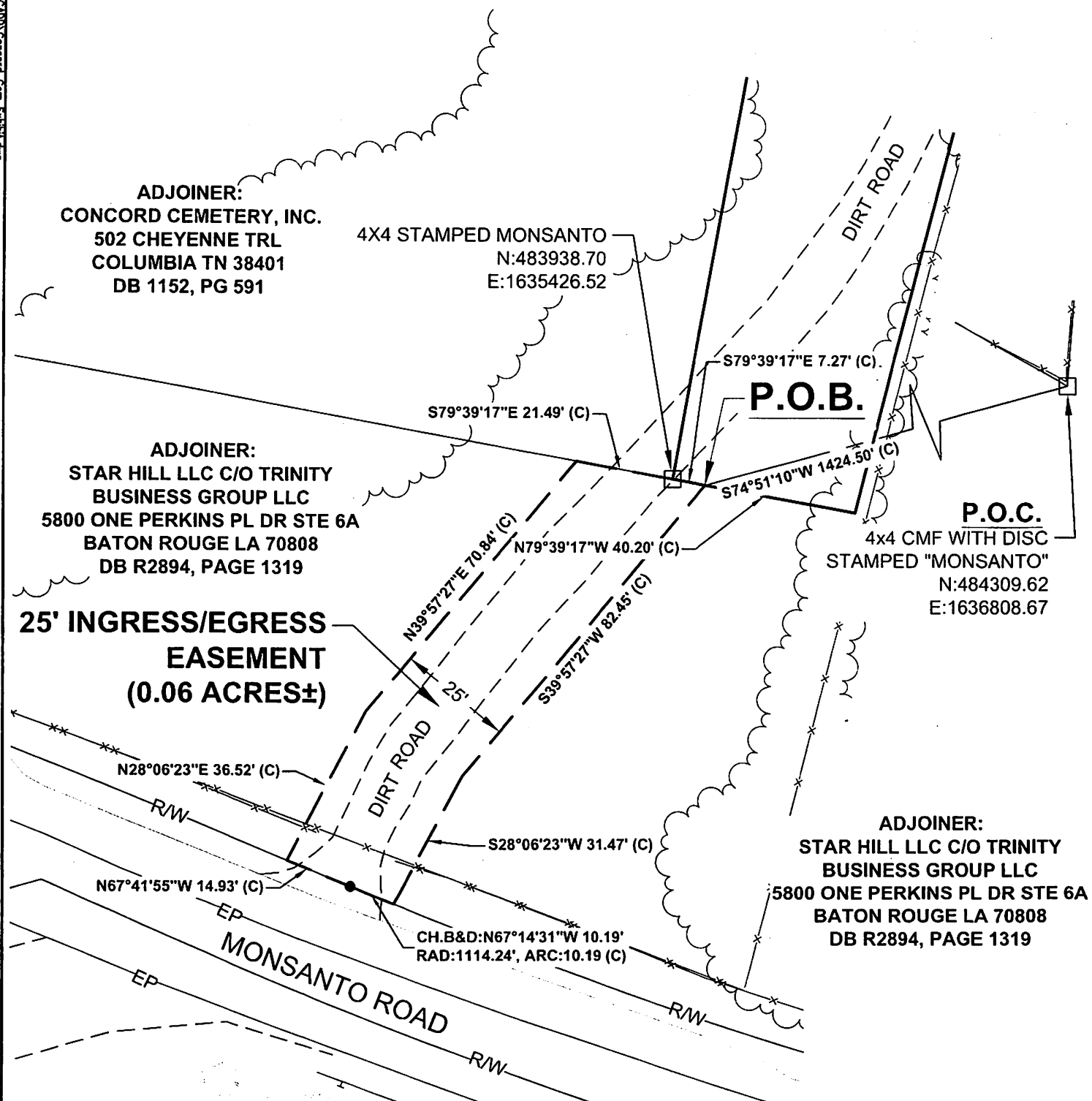
A TRACT OR PARCEL OF LAND LOCATED WITHIN THE 9TH CIVIL DISTRICT OF MAURY COUNTY, TENNESSEE, BEING SOUTH AND WEST OF THE DUCK RIVER, NORTH AND EAST OF MONSANTO ROAD, BEING LOCATED WITHIN TRACT B-D OF THE PROPERTY NOW OR FORMERLY BELONGING TO STAR HILL LLC AS RECORDED IN DEED BOOK R2894, PAGE 1319 IN THE REGISTER'S OFFICE OF MAURY COUNTY, TENNESSEE AND BEING MORE PARTICULARLY DESCRIBED AS FOLLOWS:

COMMENCING AT A 4 INCH BY 4 INCH CONCRETE MONUMENT WITH A DISK STAMPED "MONSANTO" BEING THE SOUTHERN MOST CORNER OF THE HARLAN CEMETERY TRACT HAVING A TENNESSEE STATE PLANE COORDINATE POSITION OF N:484,309.62' AND E: 1,636,808.67' REFERENCED TO NAD 1983 (2011) ADJUSTMENT, AND FURTHER DESCRIBED AS SHOWN ON PAGE 12 OF THE "ALTA/ASCM LAND TITLE SURVEY FOR LAND SOUTH TN, LLC 1ST, 2ND, 8TH, AND 9TH CIVIL DISTRICT, MAURY COUNTY, COLUMBIA, TENNESSEE" AS RECORDED IN PLAT BOOK P18, PAGE 241 IN THE REGISTER'S OFFICE OF MAURY COUNTY, TENNESSEE, THENCE SOUTH 74 DEGREES 16 MINUTES 13 SECONDS WEST, 1394.84 FEET TO THE POINT OF BEGINNING;

THENCE FROM THE POINT OF BEGINNING, NORTH 79 DEGREES 39 MINUTES 17 SECONDS WEST, 40.20 FEET TO A 4 INCH BY 4 INCH CONCRETE MONUMENT STAMPED "MONSANTO" MARKING THE SOUTHEAST CORNER OF THE CONCORD CEMETERY PROPERTY NOW OR FORMERLY OWNED BY CONCORD CEMETERY, INC AS RECORDED IN DEED BOOK 1152, PAGE 591 IN THE REGISTER'S OFFICE OF MAURY COUNTY, TENNESSEE; THENCE ALONG THE EAST LINE OF SAID CONCORD CEMETERY, NORTH 10 DEGREES 21 MINUTES 33 SECONDS EAST, 322.14 FEET TO A 4 INCH BY 4 INCH CONCRETE MONUMENT STAMPED "MONSANTO" MARKING THE NORTHEAST CORNER OF SAID CONCORD CEMETERY; THENCE LEAVING SAID EAST LINE AND ALONG THE NORTH PROPERTY LINE OF SAID CONCORD CEMETERY, NORTH 79 DEGREES 22 MINUTES 06 SECONDS WEST, 70.35 FEET TO A 5/8 INCH REBAR STAMPED "BWSC CA-106-LS"; THENCE CONTINUING ALONG SAID NORTH LINE, NORTH 82 DEGREES 39 MINUTES 25 SECONDS WEST, 194.20 FEET TO A 4 INCH BY 4 INCH MONUMENT STAMPED "MONSANTO" MARKING THE NORTHWEST CORNER OF SAID CONCORD CEMETERY; THENCE LEAVING SAID NORTH LINE, NORTH 10 DEGREES 18 MINUTES 39 SECONDS EAST, 6.86 FEET; THENCE SOUTH 84 DEGREES 50 MINUTES 29 SECONDS EAST, 331.66 FEET; THENCE, SOUTH 14 DEGREES 35 MINUTES 11 SECONDS WEST, 350.13 FEET TO THE POINT OF BEGINNING AND CONTAINING 0.50 ACRES (21,639 SQUARE FEET), MORE OR LESS.

SUBJECT TO: EASEMENTS, RIGHTS OF WAY, RIGHTS, RESTRICTIONS AND COVENANTS RECORDED OR UNRECORDED.

F:\37\37122\3712210\04_CAD\SURV\CAD01\Concord Cem Exhibit.dwg



SURVEYOR'S NOTES:

1. THIS DOCUMENT WAS CREATED FOR THE EXPRESS PURPOSE AND INTENT OF GRAPHICALLY SHOWING THE LOCATION OF REAL PROPERTY FOR THE INTENT OF FACILITATING AN ACCESS EASEMENT BETWEEN STAR HILL LLC AND CONCORD CEMETERY, INC.

GENERAL LEGEND

- PROPERTY CORNER
- 5/8" REBAR CAPPED STAMPED "BWSC CA-106-LS"
- EP— EDGE OF PAVEMENT



EASEMENT DESCRIPTION

A 25 FOOT INGRESS/EGRESS EASEMENT LOCATED WITHIN THE 9TH CIVIL DISTRICT OF MAURY COUNTY, TENNESSEE, BEING SOUTH AND WEST OF THE DUCK RIVER, NORTH AND EAST OF MONSANTO ROAD, BEING LOCATED WITHIN TRACT B-D OF THE PROPERTY NOW OR FORMERLY BELONGING TO STAR HILL, LLC AS RECORDED IN DEED BOOK R2894, PAGE 1319 IN THE REGISTER'S OFFICE OF MAURY COUNTY, TENNESSEE AND BEING MORE PARTICULARLY DESCRIBED AS FOLLOWS:

COMMENCING AT A 4 INCH BY 4 INCH CONCRETE MONUMENT WITH A DISK STAMPED "MONSANTO" BEING THE SOUTHERN MOST CORNER OF THE HARLAN CEMETERY TRACT HAVING A TENNESSEE STATE PLANE COORDINATE POSITION OF N:484,309.62' AND E: 1,636,808.67' REFERENCED TO NAD 1983 (2011) ADJUSTMENT, AND FURTHER DESCRIBED AS SHOWN ON PAGE 12 OF THE "ALTA/ASCM LAND TITLE SURVEY FOR LAND SOUTH TN, LLC 1ST, 2ND, 8TH, AND 9TH CIVIL DISTRICT, MAURY COUNTY, COLUMBIA, TENNESSEE" AS RECORDED IN PLAT BOOK P18, PAGE 241 IN THE REGISTER'S OFFICE OF MAURY COUNTY, TENNESSEE, THENCE SOUTH 74 DEGREES 51 MINUTES 10 SECONDS WEST, 1424.50 FEET TO THE POINT OF BEGINNING;

THENCE FROM THE POINT OF BEGINNING, SOUTH 39 DEGREES 57 MINUTES 27 SECONDS WEST, 82.45 FEET; THENCE SOUTH 28 DEGREES 06 MINUTES 23 SECONDS WEST, 31.47 FEET TO THE NORTH RIGHT OF WAY OF MONSANTO ROAD; THENCE ALONG THE SAID NORTH RIGHT OF WAY AND ALONG A CURVE TO THE RIGHT HAVING A RADIUS OF 1114.24 FEET, ARC LENGTH OF 10.19 FEET, CHORD AND BEARING DISTANCE OF NORTH 67 DEGREES 14 MINUTES 31 SECONDS WEST, 10.19 FEET TO A 5/8 INCH REBAR STAMPED "BWSC CA-106-LS"; THENCE CONTINUING ALONG SAID NORTH RIGHT OF WAY, NORTH 67 DEGREES 41 MINUTES 55 SECONDS WEST, 14.93 FEET; THENCE LEAVING SAID NORTH RIGHT OF WAY, NORTH 28 DEGREES 06 MINUTES 23 SECONDS EAST, 36.52 FEET; THENCE NORTH 39 DEGREES 57 MINUTES 27 SECONDS EAST, 70.84 FEET TO THE SOUTH LINE OF THE PROPERTY NOW OR FORMERLY OWNED BY CONCORD CEMETERY, INC.; THENCE ALONG SAID SOUTH LINE, SOUTH 79 DEGREES 39 MINUTES 17 SECONDS EAST, 21.49 FEET TO A 4 INCH BY 4 INCH CONCRETE MONUMENT STAMPED "MONSANTO" BEING THE SOUTHEAST CORNER OF SAID CONCORD CEMETERY, INC. PROPERTY; THENCE CONTINUING, SOUTH 79 DEGREES 39 MINUTES 17 SECONDS EAST, 7.27 FEET TO THE POINT OF BEGINNING AND CONTAINING 0.06 ACRES (2,766 SQUARE FEET), MORE OR LESS.

SUBJECT TO: EASEMENTS, RIGHTS OF WAY, RIGHTS, RESTRICTIONS AND COVENANTS RECORDED OR UNRECORDED.