



2015

DRIVE YOUR COUNTY TO THE TOP TEN:

Accelerating Action Towards Improving County Health

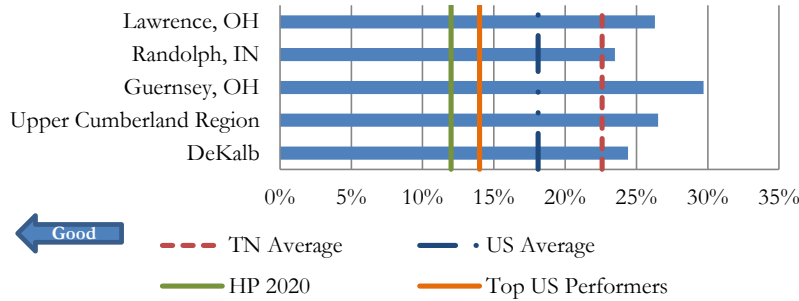
DeKalb County



Demographics

Population:	19,164	<18 YOA:	22.65%	65+ YOA:	16.93%	% Rural:	78.37%
Unemployment:	8.23%	% Females:	50.45%	% Males:	49.55%	Graduation Rate:	92.50
Single parent households:	19.77%	MHI:	\$37,392				

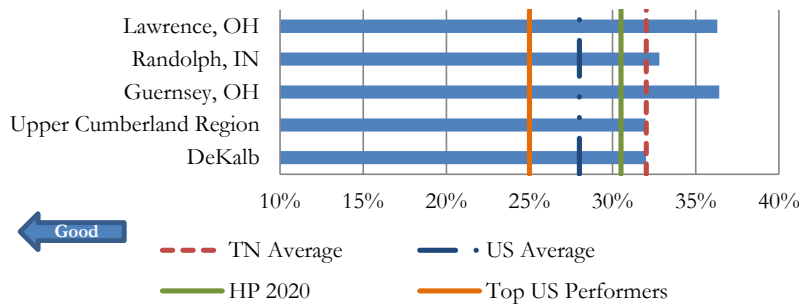
Adult Smoking



Top Third

Measure	Value
Drinking Water Violations	0.00%
Severe Housing Problems	8.55%
Children in Single-Parent Households	19.77%
Food Environment Index	8.00
Poor Physical Health Days	3.60
Diabetic Monitoring	88.28%
Primary Care Physicians	1890:1
Unemployment	8.23%
High School Graduation	92.50%

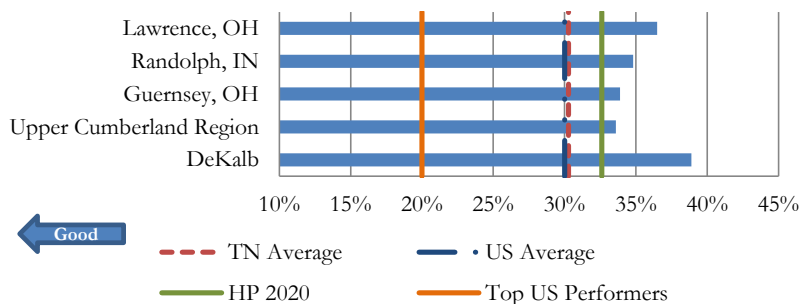
Adult Obesity



Middle Third

Measure	Value
Adult Smoking	24.40%
Driving Alone to Work	83.61%
Long Commute - Driving Alone	32.40%
Violent Crime	326.71
Poor or Fair Health	22.60%
Adult Obesity	32.00%
Income Inequality	4.62
Sexually Transmitted Infections	301.60
Poor Mental Health Days	4.30
Social Associations	10.05

Physical Inactivity



Bottom Third

Measure	Value
Uninsured	19.89%
Injury Deaths	131.00
Physical Inactivity	38.90%
Access to Exercise Opportunities	26.04%
Alcohol-Impaired Driving Deaths	46.15%
Teen Births	61.87
Premature Death	11,431.45
Children in Poverty	33.60%
Dentists	4791:1
Air Pollution - Particulate Matter	14.11

YOA: Years of Age. MHI: Median Household Income. HP 2020: Healthy People 2020 Goal. Adult Smoking: Percentage of adults who are current smokers. Source: Behavioral Risk Factor Surveillance System; 2006-2012. Adult Obesity: Percentage of adults that report a BMI of 30 or more. Source: CDC Diabetes Interactive Atlas; 2011. Physical Inactivity: Percentage of adults aged 20 and over reporting no leisure-time physical activity. Source: CDC Diabetes Interactive Atlas; 2011. Prepared by the Division of Policy, Planning and Assessment, Office of Performance Management, Tennessee Department of Health. Nashville, TN. opm.health@tn.gov or 615-741-5001.



Health Outcomes	Length of Life	Premature Death								
		Rank	10th Ranked	Value	10th Ranked Value	Difference	Shift in Value	US Average	Peer County	Peer Value
		80	Lewis	11431.45	7769.75	3661.70	↑Bad ↓Good	6,811.00	Guernsey, OH	8186.66
		For every 100 people in the county, 1 people in the county need to live one year closer to age 75.							Randolph, IN	7617.48
		Source		National Center for Health Statistics - Mortality files			Year(s)	2010-2012	Lawrence, OH	9705.35
	Quality of Life	Poor or Fair Health								
		45	Putnam	22.60%	16.60%	6.00%	↑Bad ↓Good	12.40%	Guernsey, OH	15.40%
		Improve the health of 6 out of every 100 people in the county who, in general, report being in poor or fair health.							Randolph, IN	20.10%
		Source		Behavioral Risk Factor Surveillance System			Year(s)	2006-2012	Lawrence, OH	27.90%
	Quality of Life	Poor Physical Health Days*								
		11	Chester	3.60	3.40	0.20	↑Bad ↓Good	3.70	Guernsey, OH	4.20
		Engage people in the county on ways to reduce number of poor physical health days reported by residents by 1 days per month.							Randolph, IN	5.00
		Source		Behavioral Risk Factor Surveillance System			Year(s)	2006-2012	Lawrence, OH	7.10
	Quality of Life	Poor Mental Health Days								
		54	Henderson	4.30	2.80	1.50	↑Bad ↓Good	3.50	Guernsey, OH	4.40
		Engage people in the county on ways to reduce number of poor physical health days reported by residents by 2 days per month.							Randolph, IN	3.60
		Source		Behavioral Risk Factor Surveillance System			Year(s)	2006-2012	Lawrence, OH	6.10
	Quality of Life	Low Birthweight								
		70	Lewis	9.21%	7.29%	1.92%	↑Bad ↓Good	8.10%	Guernsey, OH	8.32%
		Reduce the number of low birth weight babies by 2 for every 100 live births.							Randolph, IN	8.35%
		Source		National Center for Health Statistics - Natality files			Year(s)	2006-2012	Lawrence, OH	10.89%
Health Factors	Health Behaviors	Adult Smoking								
		34	Knox	24.40%	18.50%	5.90%	↑Bad ↓Good	18.10%	Guernsey, OH	29.70%
		Get 25 out of every 100 current adult smokers in the county to quit smoking.							Randolph, IN	23.50%
		Source		Behavioral Risk Factor Surveillance System			Year(s)	2006-2012	Lawrence, OH	26.30%
		Adult Obesity								
	45	Hamilton	32.00%	29.10%	2.90%	↑Bad ↓Good	28.00%	Guernsey, OH	36.40%	
	Get 10 out of every 100 current obese adults in the county to reduce their BMI below 30.							Randolph, IN	32.80%	
	Source		CDC Diabetes Interactive Atlas			Year(s)	2011	Lawrence, OH	36.30%	
		Health Behaviors	Food Environment Index							
7	Williamson		8.00	8.9	0.9	↑Good ↓Bad	7.60	Guernsey, OH	7.20	
Increase the county's food index score by 0.9.							Randolph, IN	6.90		
Source		USDA Food Environment Atlas, Map the Meal Gap			Year(s)	2012	Lawrence, OH	7.30		

Prepared by the Division of Policy, Planning and Assessment, Office of Performance Management, Tennessee Department of Health, Nashville, TN. April 2015. opm.health@tn.gov or 615-741-5001. The full report can be accessed at: <http://health.tn.gov/statistics/specialprojects.htm>. All data is from the University of Wisconsin Population Health Institute and Robert Wood Johnson Foundation's, 2015 *County Health Rankings and Roadmaps* report. Difference statements represent the absolute value using the following formula: ["Value" - "10th Ranked Value"]. The action statements are based on the assumption that no new additional cases occur. All rankings and action statements presented in this report must be interpreted with caution due to various limitations of each measurement. Further information with regards to the strengths and limitations of each measurement may be found by clicking the hyperlink found in the description of each measurement.

Health Factors

Health Behaviors

Physical Inactivity	Rank	10th Ranked	Value	10th Ranked Value	Difference	Shift in Value	US Average	Peer County	Peer Value
	92	Wilson	38.90%	28.50%	10.40%	↑Bad ↓Good	30.00%	Guernsey, OH	33.90%
Percentage of adults aged 20 and over reporting no leisure-time physical activity Get 27 out of every 100 currently physically inactive adults to exercise during leisure time.								Randolph, IN	34.80%
Source			CDC Diabetes Interactive Atlas		Year(s)		2011	Lawrence, OH	36.50%
Access to Exercise Opportunities	Rank	10th Ranked	Value	10th Ranked Value	Difference	Shift in Value	US Average	Peer County	Peer Value
	88	Loudon	26.04%	78.50%	52.47%	↑Good ↓Bad	77.00%	Guernsey, OH	48.47%
Percentage of population with adequate access to locations for physical activity Consider how to remove barriers to access exercise locations to reach an additional 52.47 percent of the county's population.								Randolph, IN	32.15%
Source			Business Analyst, Delorme, ESRI, & US Census Tigerline Files		Year(s)		2010 & 2013	Lawrence, OH	95.51%
Excessive Drinking	Rank	1st Ranked	Value	1st Ranked Value	Difference	Shift in Value	US Average	Peer County	Peer Value
	NA	Greene	NA	3.30%	NA	↑Bad ↓Good	15.00%	Guernsey, OH	13.80%
Percentage of adults reporting binge or heavy drinking No information available								Randolph, IN	16.00%
Source			Behavioral Risk Factor Surveillance System		Year(s)		2006-2012	Lawrence, OH	13.30%
Alcohol-Impaired Driving Deaths	Rank	10th Ranked	Value	10th Ranked Value	Difference	Shift in Value	US Average	Peer County	Peer Value
	87	McNairy	46.15%	18.75%	27.40%	↑Bad ↓Good	32.00%	Guernsey, OH	33.33%
Percentage of driving deaths with alcohol involvement Reduce the number of alcohol related driving deaths by 27.4 percent.								Randolph, IN	17.65%
Source			Fatality Analysis Reporting System		Year(s)		2009-2013	Lawrence, OH	35.29%
Sexually Transmitted Infections	Rank	10th Ranked	Value	10th Ranked Value	Difference	Shift in Value	US Average	Peer County	Peer Value
	52	Scott	301.60	144.30	157.30	↑Bad ↓Good	458.00	Guernsey, OH	268.70
Number of newly diagnosed chlamydia cases per 100,000 population Consider ways to educate 6 out of every 10 persons self-reporting to be involved in any sexual contact to commit to using safe sex practices to prevent the infection of Chlamydia.								Randolph, IN	232.40
Source			National Center for HIV/AIDS, Viral Hepatitis, STD, & TB Prevention		Year(s)		2012	Lawrence, OH	215.70
Teen Births	Rank	10th Ranked	Value	10th Ranked Value	Difference	Shift in Value	US Average	Peer County	Peer Value
	81	Putnam	61.87	37.04	24.83	↑Bad ↓Good	31.00	Guernsey, OH	40.89
Teen birth rate per 1,000 female population, ages 15-19 For every 100 teenage females (ages 15 to 19 years) in the county, consider ways to prevent 41 teen(s) from becoming pregnant.								Randolph, IN	45.17
Source			National Center for Health Statistics - Natality files		Year(s)		2006-2012	Lawrence, OH	48.78

Clinical Care

Uninsured	Rank	10th Ranked	Value	10th Ranked Value	Difference	Shift in Value	US Average	Peer County	Peer Value
	93	Blount	19.89%	14.64%	5.25%	↑Bad ↓Good	18.00%	Guernsey, OH	14.71%
Percentage of population under age 65 without health insurance Get 27 out of every 100 currently uninsured adults ages 18-64 to obtain health insurance.								Randolph, IN	17.78%
Source			Small Area Health Insurance Estimates		Year(s)		2012	Lawrence, OH	14.06%
Primary Care Physicians	Rank	10th Ranked	Value	10th Ranked Value	Difference	Shift in Value	US Average	Peer County	Peer Value
	28	Anderson	1890:1	1397:1	493	↑Bad ↓Good	1,355.00	Guernsey, OH	1991:1
Ratio of population to primary care physicians To reach a population-to-provider ratio at or exceeding that of the 10th ranking county, 4 primary care providers would need to be recruited to the county. More importantly, if the county's value is greater than 3,500, this county would be considered a Health Professional Shortage Area.								Randolph, IN	4303:1
Source			Area Health Resource File/American Medical Association		Year(s)		2012	Lawrence, OH	2142:1
Dentists	Rank	10th Ranked	Value	10th Ranked Value	Difference	Shift in Value	US Average	Peer County	Peer Value
	72	Maury	4791:1	1675:1	3116	↑Bad ↓Good	1,663.00	Guernsey, OH	2086:1
Ratio of population to dentists To reach a population-to-provider ratio at or exceeding that of the 10th ranking county, 8 dental care providers would need to be recruited to the county. More importantly, if the county's value is greater than 5,000, this county would be considered a Health Professional Shortage Area.								Randolph, IN	5125:1
Source			Area Health Resource File/American Medical Association		Year(s)		2013	Lawrence, OH	3642:1

Health Factors	Clinical Care	Mental Health Providers	Rank	10th Ranked	Value	10th Ranked Value	Difference	Shift in Value	US Average	Peer County	Peer Value
		Ratio of population to mental health providers	69	McNairy	4791:1	688:1	4103	↑Bad ↓Good	753	Guernsey, OH	1132:1
		To reach a population-to-provider ratio at or exceeding that of the 10th ranking county, 24 mental health providers would need to be recruited to the county. More importantly, if the county's value is greater than 30,000, this county would be considered a Health Professional Shortage Area.								Randolph, IN	4271:1
		Source	CMS, National Provider Identification file				Year(s)	2014	Lawrence, OH	2135:1	
		Preventable Hospital Stays	Rank	10th Ranked	Value	10th Ranked Value	Difference	Shift in Value	US Average	Peer County	Peer Value
Number of hospital stays for ambulatory-care sensitive conditions per 1,000 Medicare enrollees		65	Marshall	100.91	58.47	42.44	↑Bad ↓Good	65.00	Guernsey, OH	116.49	
		For every 100 Medicare enrollees, prevent 1 Medicare enrollees from being hospitalized for ambulatory-care sensitive conditions.								Randolph, IN	80.22
		Source	Dartmouth Atlas of Health Care				Year(s)	2012	Lawrence, OH	91.63	
		Diabetic Monitoring	Rank	10th Ranked	Value	10th Ranked Value	Difference	Shift in Value	US Average	Peer County	Peer Value
Percentage of diabetic Medicare enrollees ages 65-75 that receive HbA1c monitoring		17	Crockett	88.28%	88.92%	0.64%	↑Good ↓Bad	84.00%	Guernsey, OH	78.74%	
		For every 100 diabetic Medicare enrollees, get 1 additional Medicare enrollees to receive HbA1c screening.								Randolph, IN	86.45%
		Source	Dartmouth Atlas of Health Care				Year(s)	2012	Lawrence, OH	79.39%	
		Mammography Screening	Rank	10th Ranked	Value	10th Ranked Value	Difference	Shift in Value	US Average	Peer County	Peer Value
Percentage of female Medicare enrollees ages 67-69 that receive mammography screening		70	Knox	56.16%	65.71%	9.55%	↑Good ↓Bad	63.00%	Guernsey, OH	63.84%	
		For every 100 female Medicare enrollees, get 10 additional Medicare enrollees to receive their mammography screening.								Randolph, IN	64.69%
		Source	Dartmouth Atlas of Health Care				Year(s)	2012	Lawrence, OH	56.79%	
		High School Graduation	Rank	10th Ranked	Value	10th Ranked Value	Difference	Shift in Value	US Average	Peer County	Peer Value
Percentage of ninth-grade cohort that graduates in four years		31	Carroll	92.50%	95.32%	2.82%	↑Good ↓Bad	80.00%	Guernsey, OH	90.71%	
		For every 100 ninth graders, assist 3 additional ninth graders to graduate within four years.								Randolph, IN	90.00%
		Source	data.gov, supplemented w/ National Center for Education Statistics				Year(s)	2011-2012	Lawrence, OH	90.96%	
		Some College	Rank	10th Ranked	Value	10th Ranked Value	Difference	Shift in Value	US Average	Peer County	Peer Value
Percentage of adults ages 25-44 years with some post-secondary education		61	Shelby	40.57%	62.09%	21.52%	↑Good ↓Bad	63.00%	Guernsey, OH	47.78%	
		For every 100 adults between 25-44 years of age, assist 2153 additional adults to complete some coursework at the collegiate level.								Randolph, IN	54.49%
		Source	American Community Survey				Year(s)	2009-2013	Lawrence, OH	48.43%	
		Unemployment	Rank	10th Ranked	Value	10th Ranked Value	Difference	Shift in Value	US Average	Peer County	Peer Value
Percentage of population ages 16 and older unemployed but seeking work		28	Blount	8.23%	6.89%	1.34%	↑Bad ↓Good	8.10%	Guernsey, OH	8.23%	
		For every 100 persons ages 16 years and older, help 2 persons successfully find employment.								Randolph, IN	8.56%
		Source	Bureau of Labor Statistics				Year(s)	2013	Lawrence, OH	7.88%	
		Children in Poverty	Rank	10th Ranked	Value	10th Ranked Value	Difference	Shift in Value	US Average	Peer County	Peer Value
Percentage of children under age 18 in poverty		75	Montgomery	33.60%	21.40%	12.20%	↑Bad ↓Good	23.00%	Guernsey, OH	33.90%	
		For every 100 children (under 18 years) in poverty, help 37 children to find assistance to get out of poverty.								Randolph, IN	26.20%
		Source	Small Area Income and Poverty Estimates				Year(s)	2013	Lawrence, OH	28.50%	
		Income Inequality	Rank	10th Ranked	Value	10th Ranked Value	Difference	Shift in Value	US Average	Peer County	Peer Value
Ratio of household income at the 80th percentile to income at the 20th percentile		50	Williamson	4.62	4.11	0.51	↑Bad ↓Good	NA	Guernsey, OH	4.46	
		To reach a household income ratio at or below that of the 10th ranking county reduce the gap between the 80th percentile and 20th percentile by 1 household(s).								Randolph, IN	4.11
		Source	American Community Survey				Year(s)	2009-2013	Lawrence, OH	4.66	

Health Factors

Social & Economic Factors

Children in Single-Parent Households	Rank	1st Ranked	Value	1st Ranked Value	Difference	Shift in Value	US Average	Peer County	Peer Value
	3	Overton	19.77%	15.20%	4.57%	↑Bad ↓Good	21.00%	Guernsey, OH	32.44%
Percentage of children that live in a household headed by single parent	For every 100 single parent households in the county, investigate ways to encourage 24 households to be a multi-parent household.							Randolph, IN	34.99%
Source	American Community Survey		Year(s)		2009-2013		Lawrence, OH	37.50%	
Social Associations	Rank	10th Ranked	Value	10th Ranked Value	Difference	Shift in Value	US Average	Peer County	Peer Value
57	Henry	10.05	16.70	6.64	↑Good ↓Bad	33.00%	Guernsey, OH	16.07	
Number of membership associations per 10,000 population	For every 100 people in the county, increase the number of membership associations by 1.							Randolph, IN	18.98
Source	County Business Patterns		Year(s)		2012		Lawrence, OH	11.11	
Violent Crime	Rank	10th Ranked	Value	10th Ranked Value	Difference	Shift in Value	US Average	Peer County	Peer Value
43	Carter	326.71	206.33	120.38	↑Bad ↓Good	387.00	Guernsey, OH	141.84	
Number of reported violent crime offenses per 100,000 population	For every 100 persons in the county, prevent 37 people from committing a violent crime.							Randolph, IN	24.93
Source	Uniform Crime Reporting - FBI		Year(s)		2010-2012		Lawrence, OH	166.55	
Injury Deaths	Rank	10th Ranked	Value	10th Ranked Value	Difference	Shift in Value	US Average	Peer County	Peer Value
93	Fayette	131.00	68.81	62.19	↑Bad ↓Good	59.00	Guernsey, OH	66.36	
Number of deaths due to injury per 100,000 population	For every 1,000 population consider ways to prevent 475 deaths as a result of intentional and unintentional injury.							Randolph, IN	55.88
Source	CDC WONDER mortality data		Year(s)		2008-2012		Lawrence, OH	71.71	
Air Pollution - Particulate Matter	Rank	10th Ranked	Value	10th Ranked Value	Difference	Shift in Value	US Average	Peer County	Peer Value
72	Greene	14.11	13.14	0.97	↑Bad ↓Good	11.10	Guernsey, OH	13.73	
Average daily density of fine particulate matter in micrograms per cubic meter (PM2.5)	Reduce the average daily measure of fine particulate matter by 0.97 micrograms per cubic meter (PM2.5).							Randolph, IN	13.46
Source	CDC WONDER Environmental data		Year(s)		2011		Lawrence, OH	13.13	

Physical Environment

Drinking Water Violations	Rank	1st Ranked	Value	1st Ranked Value	Difference	Shift in Value	US Average	Peer County	Peer Value
1	Anderson	0.00%	0.00%	0.00%	↑Bad ↓Good	8.00%	Guernsey, OH	1.37%	
Percentage of population potentially exposed to water exceeding a violation limit during the past year	No Action Required							Randolph, IN	0.00%
Source	Safe Drinking Water Information System		Year(s)		FY2013-14		Lawrence, OH	0.00%	
Severe Housing Problems	Rank	1st Ranked	Value	1st Ranked Value	Difference	Shift in Value	US Average	Peer County	Peer Value
2	Moore	8.55%	8.45%	0.10%	↑Bad ↓Good	19.00%	Guernsey, OH	12.38%	
Percentage of households with at least 1 of 4 housing problems: overcrowding, high housing costs, or lack of kitchen or plumbing facilities	For every 100 persons in the county experiencing housing problems, help 2 person(s) to find housing assistance.							Randolph, IN	12.18%
Source	Comprehensive Housing Affordability Strategy (CHAS) data		Year(s)		2007-2011		Lawrence, OH	12.62%	
Driving Alone to Work	Rank	10th Ranked	Value	10th Ranked Value	Difference	Shift in Value	US Average	Peer County	Peer Value
37	Davidson	83.61%	80.03%	3.58%	↑Bad ↓Good	76.00%	Guernsey, OH	85.44%	
Percentage of the workforce that drives alone to work	For every 100 persons that currently drive alone to work, convince 5 to carpool or take mass-transportation.							Randolph, IN	83.25%
Source	American Community Survey		Year(s)		2009-2013		Lawrence, OH	88.89%	
Long Commute - Driving Alone	Rank	10th Ranked	Value	10th Ranked Value	Difference	Shift in Value	US Average	Peer County	Peer Value
37	Hamilton	32.40%	25.10%	7.30%	↑Bad ↓Good	34.00%	Guernsey, OH	26.40%	
Among workers who commute in their car alone, the percentage that commute more than 30 minutes	For every 100 persons that currently drive more than 30 minutes alone to work, convince 23 to carpool or take mass-transportation.							Randolph, IN	33.40%
Source	American Community Survey		Year(s)		2009-2013		Lawrence, OH	29.60%	