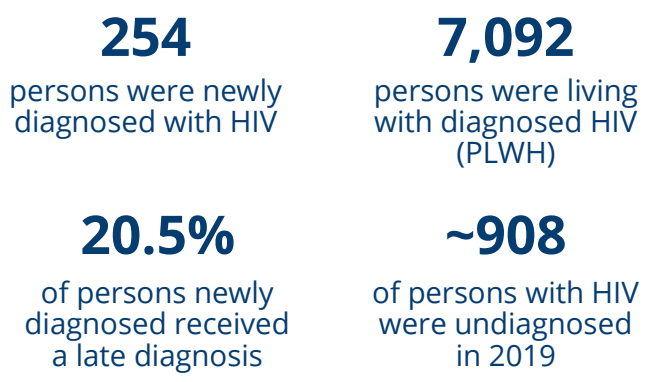


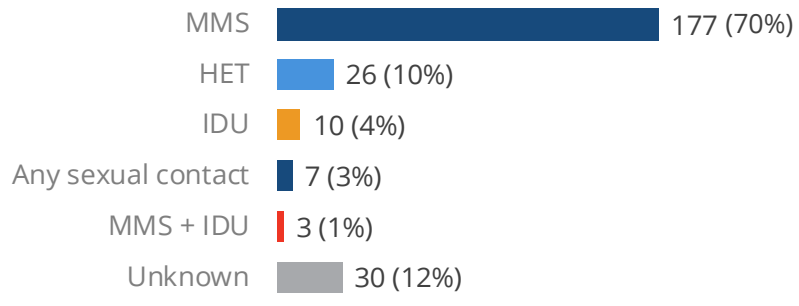
Middle HIV Community Planning Region, Tennessee, 2020

Bedford, Cannon, Cheatham, Clay, Coffee, Cumberland, Davidson, DeKalb, Dickson, Fentress, Giles, Hickman, Houston, Humphreys, Jackson, Lawrence, Lewis, Lincoln, Macon, Marshall, Maury, Montgomery, Moore, Overton, Perry, Pickett, Putnam, Robertson, Rutherford, Smith, Stewart, Sumner, Trousdale, Van Buren, Williamson, Warren, Wayne, White & Wilson Counties

Region Overview



Over half (70%) of newly diagnosed reported male-to-male sexual contact (MMS).

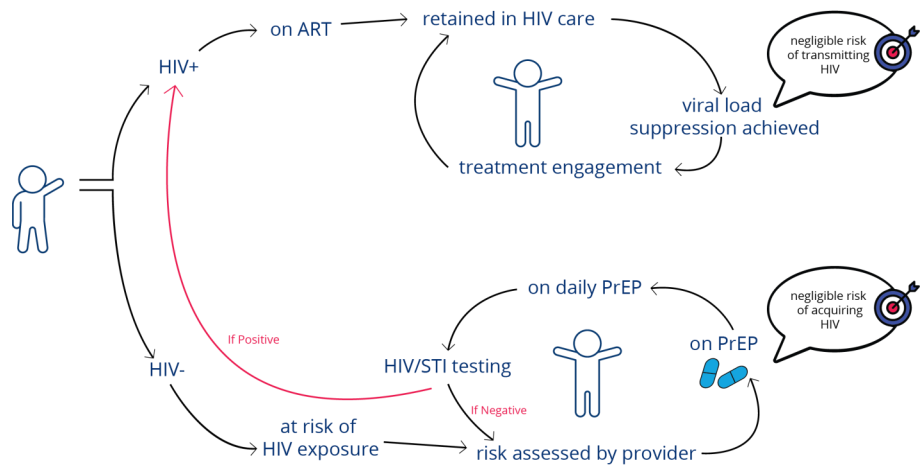


MMS: male-to-male sexual contact, IDU: injection drug use, HET: heterosexual sexual contact

Status-neutral Strategies to Address HIV in Tennessee

Everyone has a role in preventing HIV. A status neutral approach begins with an HIV test and meets people where they are based on results.

- Someone who tests HIV negative can access prevention services (e.g., pre-exposure prophylaxis [PrEP], syringe services).
- PLWH have immediate access to medical and social services (e.g., HIV treatment to achieve and maintain an undetectable viral load [Undetectable=Untransmittable or U=U]).

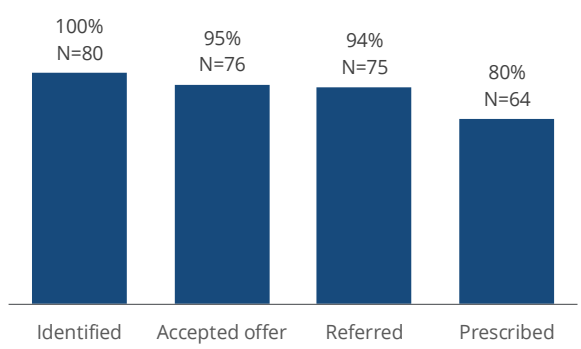


Tennessee Department of Health (TDH) Prevention and Care Program Outcomes

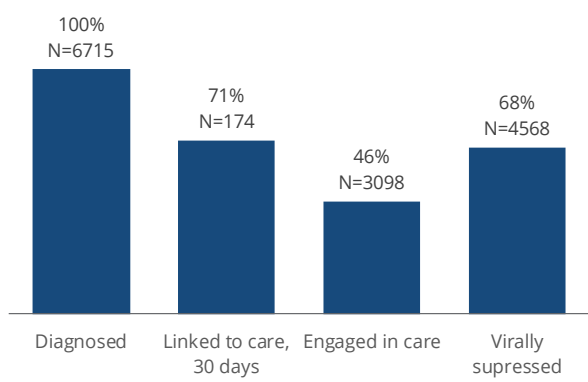
TDH Funded HIV Testing



PrEP Continuum of Care*



HIV Continuum of Care



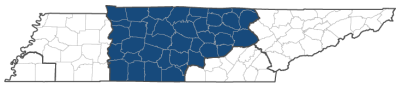
Syringe Services Programs



*Among clients navigated by TDH funded agencies

Middle HIV Community Planning Region, Tennessee, 2020

Bedford, Cannon, Cheatham, Clay, Coffee, Cumberland, Davidson, DeKalb, Dickson, Fentress, Giles, Hickman, Houston, Humphreys, Jackson, Lawrence, Lewis, Lincoln, Macon, Marshall, Maury, Montgomery, Moore, Overton, Perry, Pickett, Putnam, Robertson, Rutherford, Smith, Stewart, Sumner, Trousdale, Van Buren, Williamson, Warren, Wayne, White & Wilson Counties



Definitions

HIV Continuum of Care: The HIV Continuum of Care displays the proportion of individuals living with diagnosed HIV who are engaged at each stage of HIV medical care: diagnosis of HIV, linkage to care, engagement in care and achievement of viral suppression.

Engaged in care: Persons with diagnosed HIV who had at least two CD4, viral load, or genotype results reported at least three months apart during the evaluation year.

Late diagnosis: Any HIV diagnosis that occurs 12 months or less before an individual is diagnosed as Stage 3 HIV (AIDS).

Linked to care, 30 days: Persons newly diagnosed with HIV with at least one CD4 or viral load result reported within 30 days after the diagnosis date.

Virally suppressed: Persons with diagnosed HIV who had at least one viral load measurement during the evaluation year and whose last viral load measurement was less than or equal to 200 copies/mL.

Resources

Medication-Assisted Treatment (MAT) is the use of medications with counseling and behavioral therapies, treat substance use disorders, primarily opioid use.

PrEP Navigators engage persons who tested negative for HIV who would benefit from pre-exposure prophylaxis (PrEP), a pill when taken once a day is at least 99% effective at preventing HIV transmission if exposed. Navigators help link clients to PrEP services while helping them maintain HIV negative status.

Ryan White Part B is a program designed to promote health and access to quality care for Tennesseans living with HIV. This program provides HIV primary medical care, essential support services and medications for eligible residents. Through successful case management people living with HIV are empowered to effectively manage their HIV and improve their overall health and quality of life.

Syringe Services Programs (SSPs) offer free distribution and disposal of needles/syringes, HIV and HCV testing, access to naloxone and referrals to prevention, care, and social services. SSPs help to reduce drug use, get clients into treatment and prevent HIV/HCV transmission.

Tennessee Recovery Navigators are certified peer recovery specialists who to use their lived experience to break the cycle of overdose and help individuals get connected with treatment and recovery services by meeting patients in the emergency department after an overdose.

Viral Hepatitis Case Navigators (VHCNs) are available in each region. Navigators identify, engage, and refer HCV viremic individuals tested in the health department, and acutely infected individuals statewide, to HCV treatment and supportive services.

For More Information

Viral Hepatitis Case Navigation or Harm Reduction Resource Teams: VH.Health@tn.gov

Overdose prevention, substance use disorder treatment or recovery services: health.opioidresponse@tn.gov

HIV/HCV Outbreak Vulnerability



tinyurl.com/vulnerabilityassessment

HIV Prevention Services



tinyurl.com/hivtnprevention

HIV Epidemiological Data



tinyurl.com/TennesseeHIVData

End the Syndemic Tennessee



endthesyndemictn.org