



Age-Friendly Public Health System Celebration and Town Hall Northeast Tennessee

Rebekah English, Northeast TN Regional Director of Public Health, Tennessee Department of Health

Welcome

Objectives

- Discover how public health is prioritizing healthy aging as a fundamental aspect of its mission
- Examine Tennessee's Age-Friendly Ecosystem
- Gain insights on available resources and actions to advance your community's age-friendly initiatives



Creating an Age-Friendly Public Health System



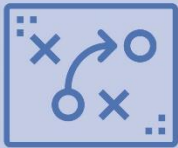
1

Creating and leading policy, systems, and environmental changes



2

Connecting and convening multi-sector partners



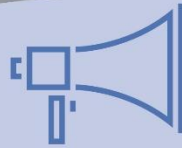
3

Coordinating existing supports and services



4

Collecting, analyzing, and translating relevant data



5

Communicating important public health information



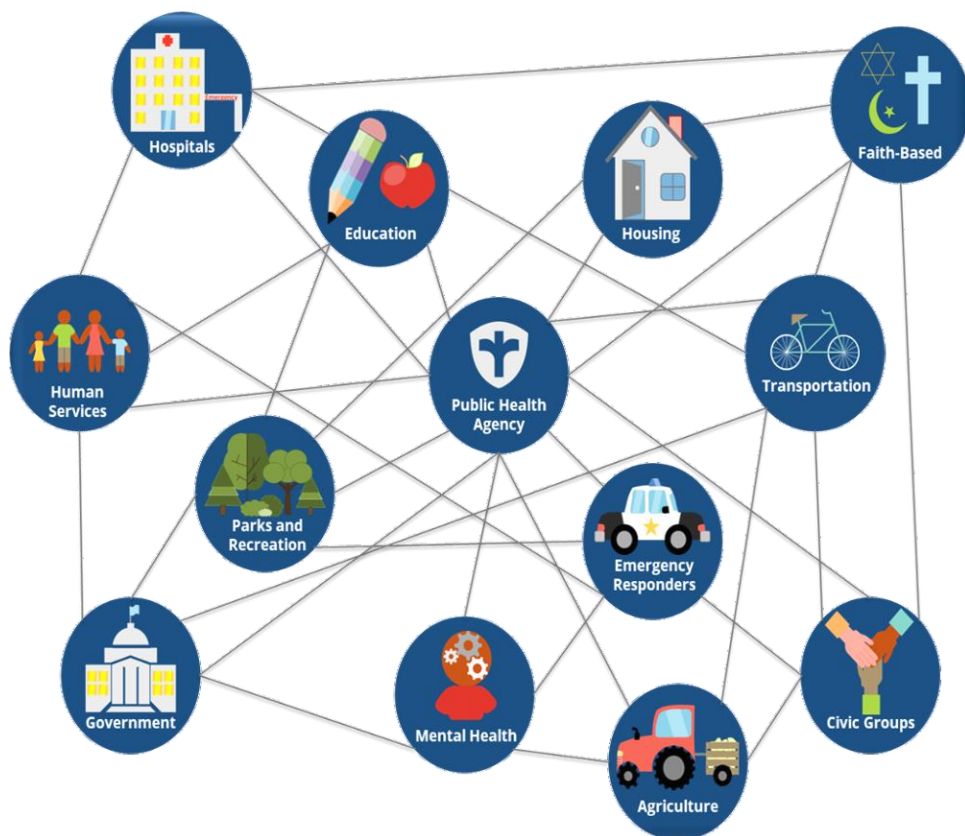
6

Complementing existing health promoting programs

THE 6 Cs FOR SUPPORTING HEALTHY AGING



Cross-Sector Collaboration is a Public Health Best Practice



Improving the health and well-being of older adults and caregivers

- 7 Northeast Tennessee Local Health Departments recognized as Age-Friendly Public Health System!
- Multi-sector partnerships

Let's Stay in Touch!

Rebekah English | Regional Director of Public Health
Northeast Tennessee

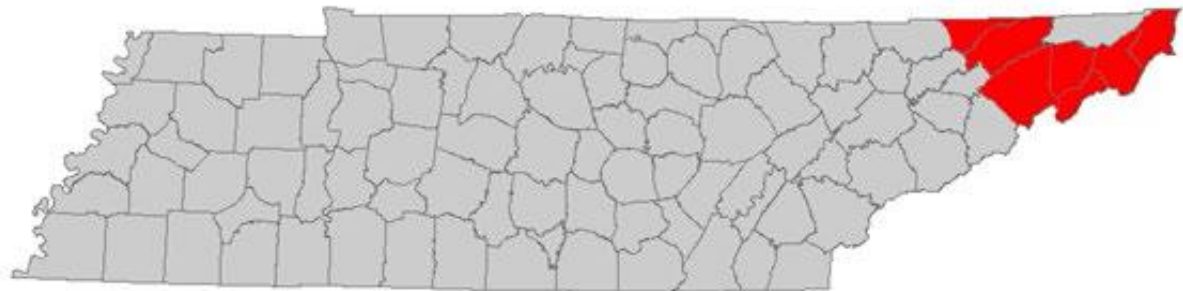
Tennessee Department of Health, Division of Community
Health Services

185 Treasure Lane

Johnson City, Tennessee 37604

p. 423-979-4624

[email: rebekah.english@tn.gov](mailto:rebekah.english@tn.gov)



[Website: Northeast Region](#)



Megan Wolfe, JD

Email: mwolfe@tfah.org



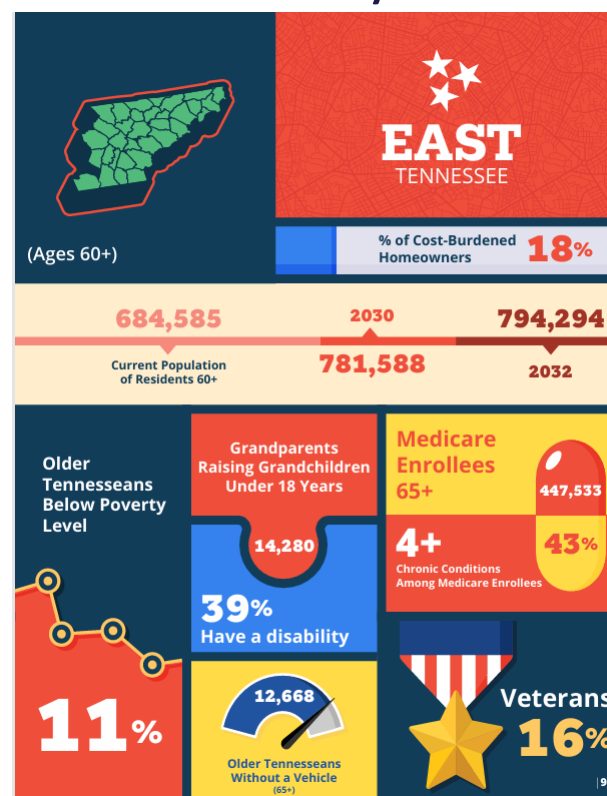
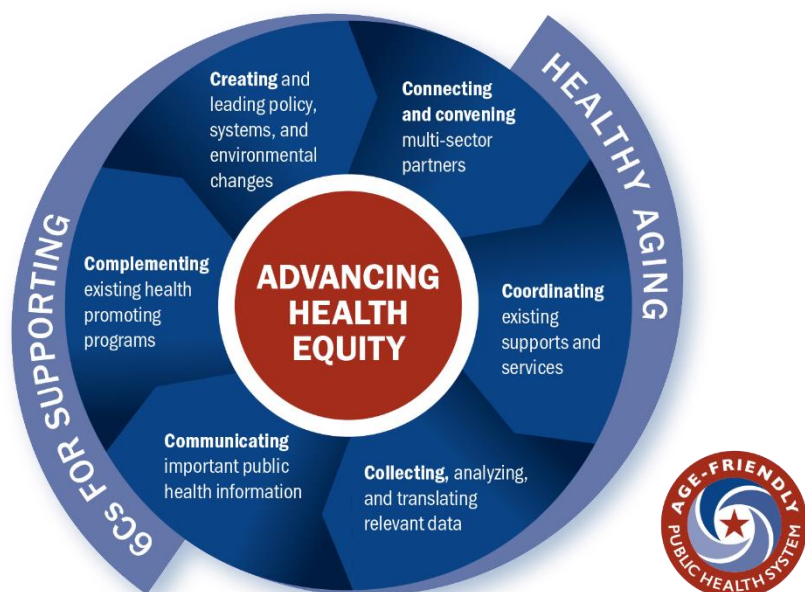
Celebrating Age-Friendly Public Health Advancement in Northeast Tennessee

Megan Wolfe, JD
January 31, 2025



The
John A. Hartford
Foundation

Tennessee's Age-Friendly Public Health Systems



AFPHS Departmental Recognitions

- Carter County
- Greene County
- Hancock County
- Hawkins County
- Johnson County
- Unicoi County
- Washington County



AFPHS Recognitions—Champions 45 Champions in the state!

- Carter County: Shana Johnson, Rachael Cunningham
- Greene County: Madison Huffine
- Hancock County: Sonya Winkle
- Hawkins County: Mikaela Sugga
- Johnson County: Angie Stout
- Unicoi County: McKenna Conway
- Washington County: Emilie Bordeaux, Anna Carpenter, Jenny Donaldson



AFPHS Recognitions—Action Plans

Carter County Health Department will introduce Age-Friendly Public Health System Senior's Center community plan

Greene County Health Department will lead the CHA/CHIP process every three years and consider older adults

Hancock County Health Department will establish a partnership with senior centers

Hawkins County Health Department will partner with TN Alzheimer's Association and local law enforcement agencies

Johnson County Health Department will review and update its emergency preparedness plans annually to ensure they address the needs of older adults

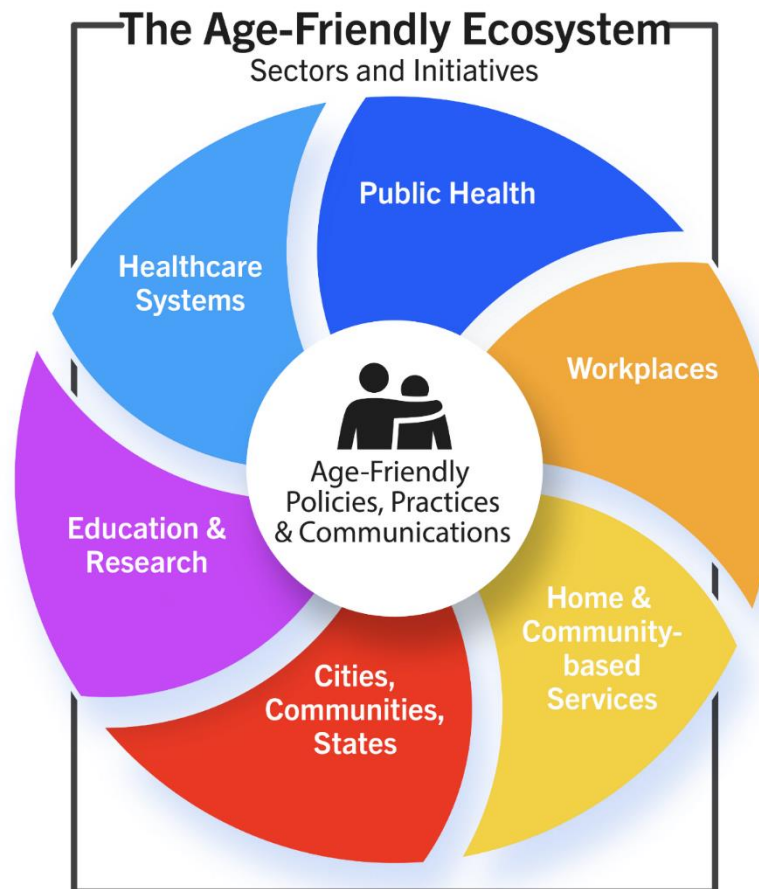
Unicoi County Health Department has brought awareness on scams, online and social media safety to the community

Washington County Health Department will implement older adult health education (e.g., diabetes, falls risk, dementia, etc.) at health fairs and collaborate with aging sector partners to ensure older adults participate in events.

Age-Friendly Ecosystem

What is it?

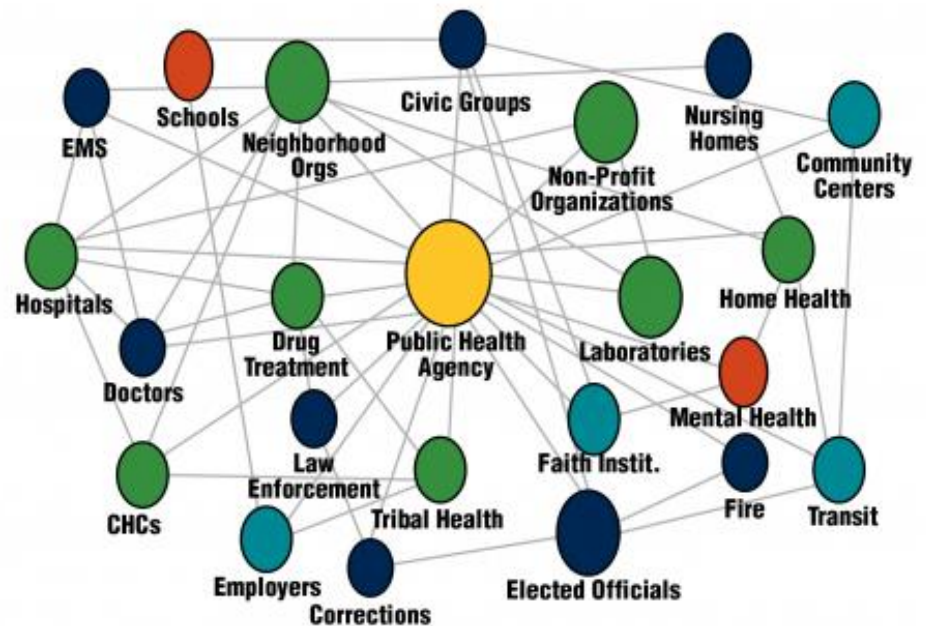
A comprehensive, collectively built, ever-expanding platform whose goal is to improve quality of life for older adults through enhanced, collaborative impact.



Age-Friendly Ecosystem

Why is multi-sectoral collaboration needed?

- Eliminate silos
- Prioritize common goals
- Elevate older adult voice
- Target limited resources
- Share expertise
- Expand and deepen partnerships
- ***Policy, systems, environmental change***



Age-Friendly Ecosystem Workshop Learnings

- Leadership is crucial: continuity is key
- Cross-sector understanding: ROI for each sector will vary
- Partnerships: think outside the box
- Funding: it's not just how much, but how can it be used?
- Time: it takes time to build buy-in and trust
- Creativity: be nimble and recognize opportunities
- Job descriptions: AFE efforts not the norm

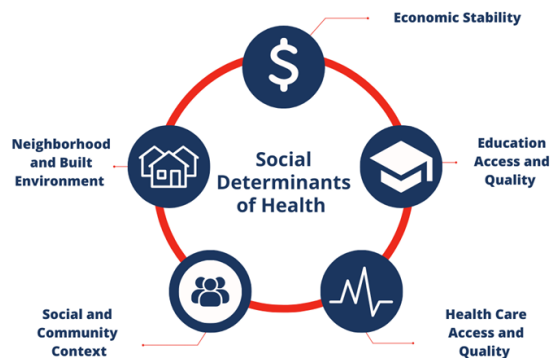
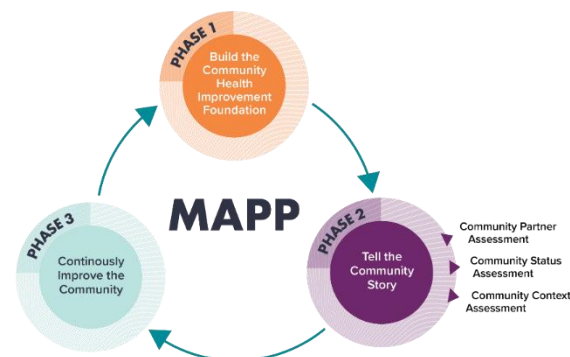


Age-Friendly Ecosystem Opportunities



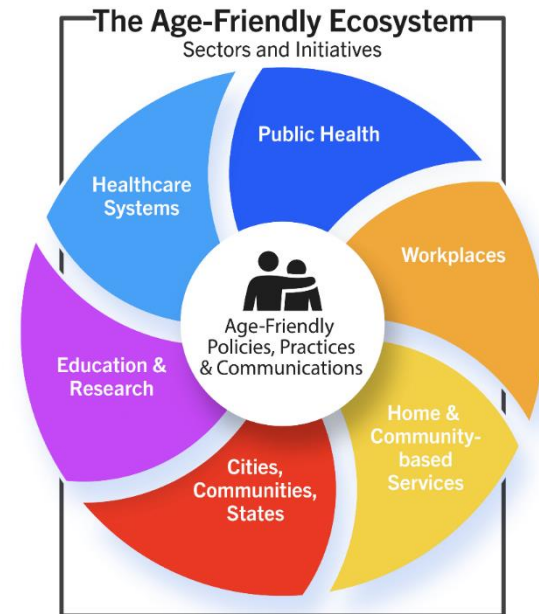
Collection

Tennessee Multi-Sector Plan for Aging Data Dashboard



The Promise of an Age-Friendly Ecosystem

- AFPHS Recognitions: Tennessee Department of Health and **29** local health departments
- Age-Friendly Universities: East Tennessee State University; others seeking designation
- Age-Friendly States and Communities (AARP): **40**
- Age-Friendly Health Systems (IHI): **37** hospitals, medical centers, clinics
- Other geriatric accreditations (surgery, Eds): **7** hospitals and medical centers
- Multi-sector Plan for Aging & Data Dashboard



Call to Action: What Can You Do?

- **Creating and Leading:** Become a champion for systems change
- **Connecting and Convening:** Bring partners together across sectors around common goals
- **Coordinating Existing Programs:** Use your agency's website as hub for healthy aging resources, programs, and services
- **Collecting and Translating Data:** Share data from MPA data dashboard to build partnerships and advocate for policy change
- **Communicating:** Share opportunities with partners for collaborating to improve older adult health and well-being
- **Complementing Existing Services:** Work with AFE partners to identify gaps in services and which organizations can best fill them



Age-Friendly Public Health Systems

www.afphs.org

www.tfah.org

afphs@tfah.org

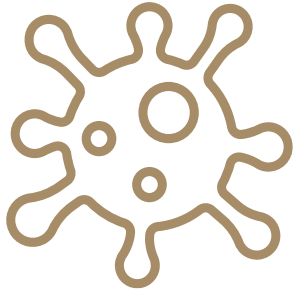




Town Hall Session

Dr. Ralph Alvarado, Dr. Kristi Wick, and
Rebekah English

Call to Action: Northeast Tennessee Opportunities



Fight Flu



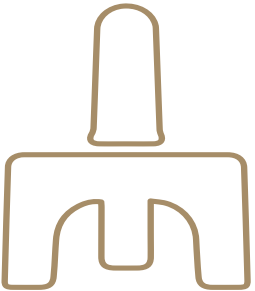
**Ready's
Program**



**Health Council
Community
Connections**



**Mental Health
First Aid (MHFA)**



**Naloxone Training
Demonstration**



Call to Action: Statewide Opportunities



**Food & Nutrition
Security Coalition**



TN Dementia ECHO

TDAC
TN Dementia Action
Collaborative



Community Compass
CommunityCompass.TN.gov



**TBI FIND
App**



Blue Zones





Rochelle Roberts

Email: Rochelle.Roberts@tn.gov



Alzheimer's Disease & Related Dementias

Rochelle Roberts – State Dementia Director

Tri-Cities



Statewide

7,117,168

1,254,587

17.6%



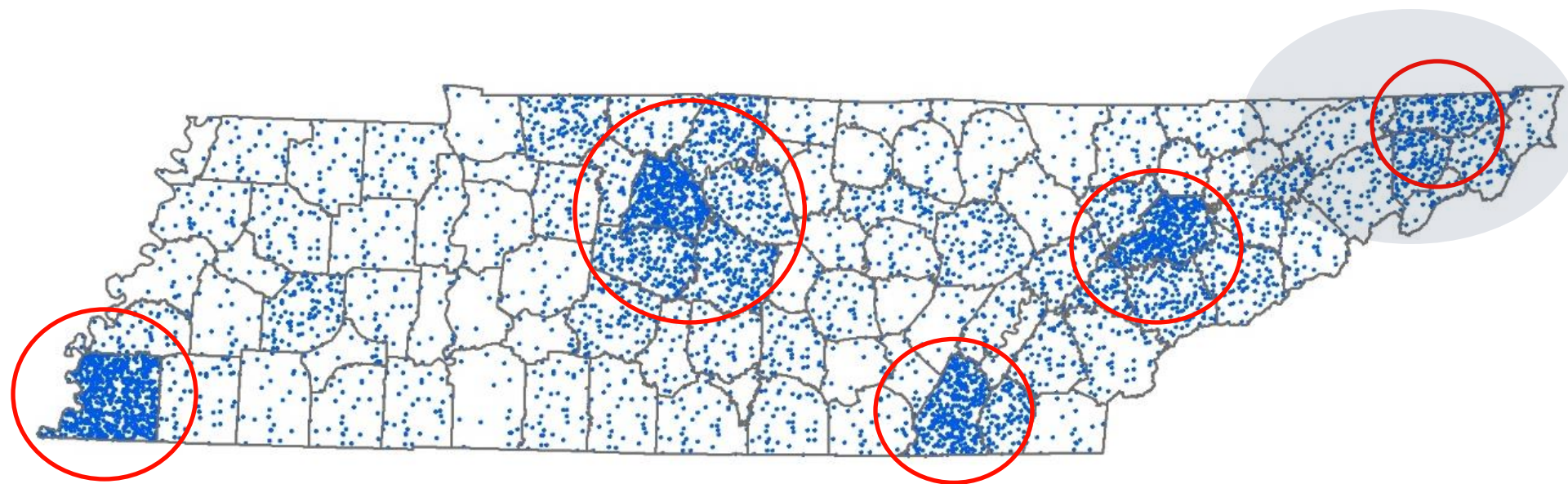
Northeast

531,841

116,411

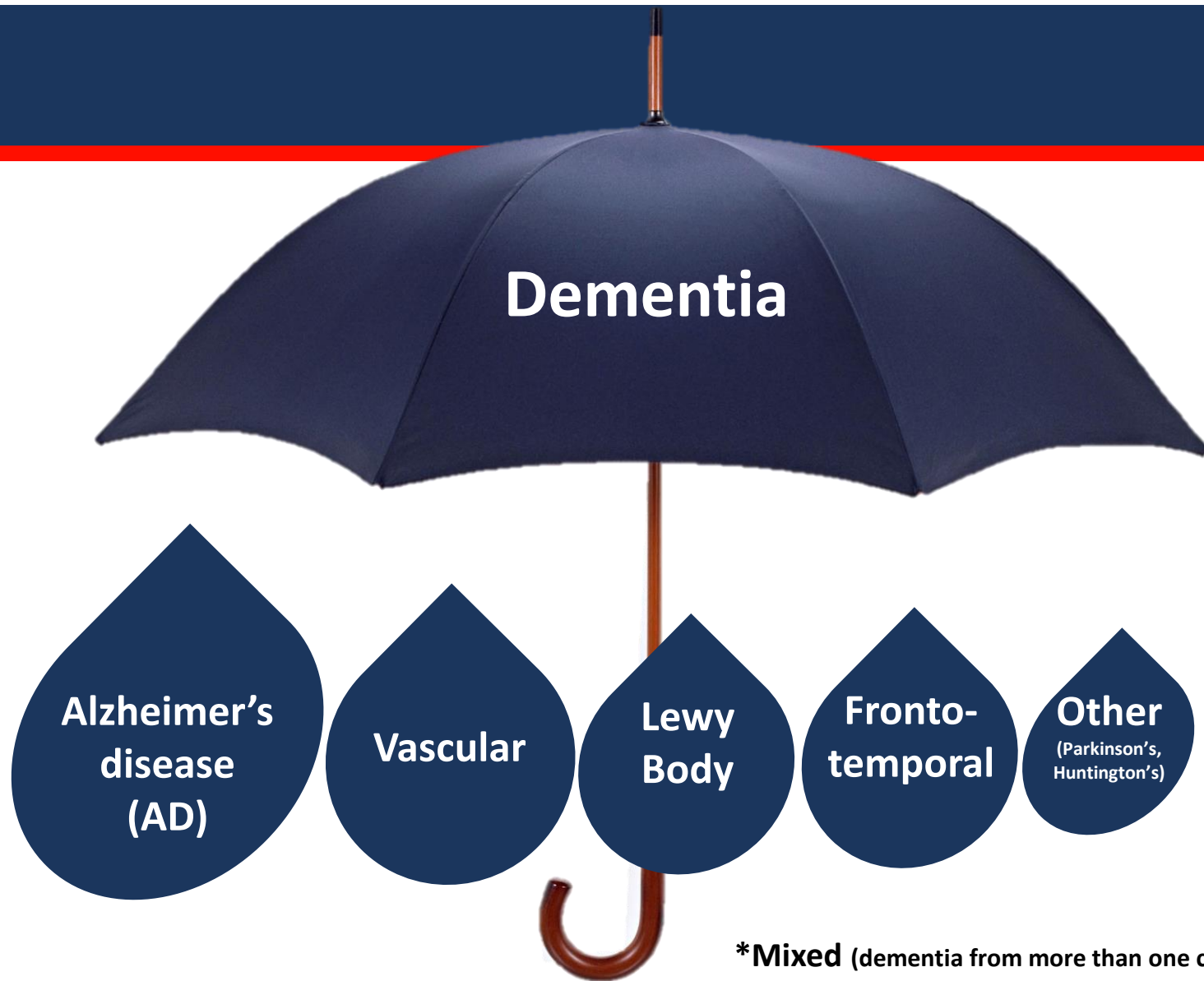
21.9%

Aging Population Density





43rd



***Mixed** (dementia from more than one cause)

8
11,500



AD Cases Age 65+



Dementia Caregivers



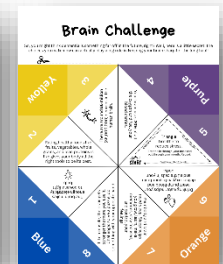
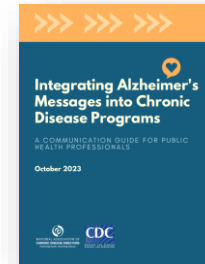
Sandwich Generation Caregivers

**47% of
adults
in their
40s &
50s.**



Call to Action

1. **Integrate dementia messaging** into current health promotion strategies and plans.
2. **Promote statewide training** to strengthen understanding of dementia and brain health.
3. **Become a member of TDAC** to engage key state and community partners.
4. **Dementia: CARE RFA** will be released early Spring 2025 providing up to \$10k to local/metro HDs or governments to implement initiatives focused on caregiver supports and emergency preparedness for individuals with dementia.



TN Dementia ECHO

Tennessee **TRAIN**



Office of Healthy Aging



Sally Pitt | Director

Rochelle Roberts | State Dementia Director

Mark Lollis | BOLD Program Coordinator

Kimothy Warren | Program Consultant

Chelsea Ridely | Aging Strategic Initiatives Director



Mia McNeil, JD
Email: mmcneil@aarpp.org



On Aging 2024

A Dozen Years of Discovery from AARP's Age-Friendly Network: Lessons, Insights, and the Path Forward

January 31, 2024
Northeast Tennessee Town Hall
East Tennessee State University



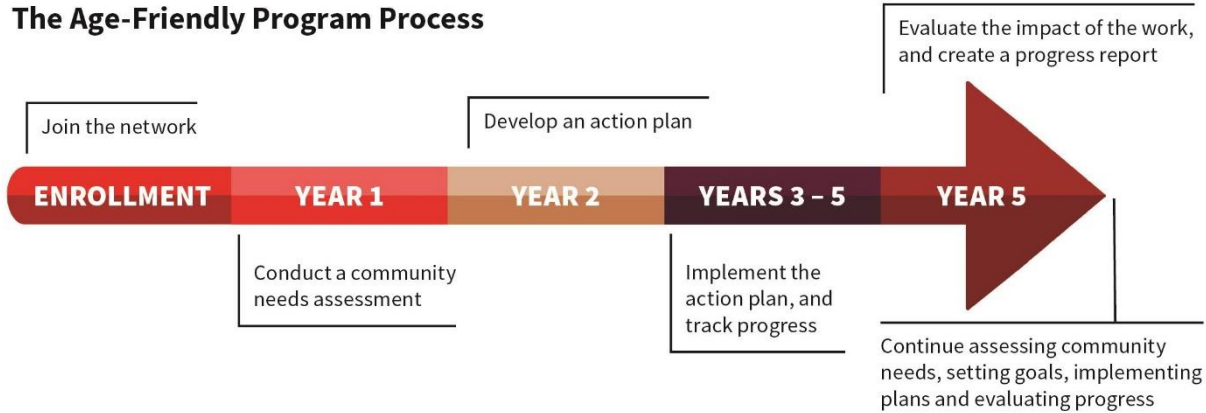
Age Friendly Communities Presenter



Mia McNeil, Esq.
State Director
AARP Tennessee



The Age-Friendly Program Process



Step 1: Establish a way to include older residents in all stages of the age-friendly process

Step 2: Conduct a community needs assessment

Step 3: Develop an action and evaluation plan based on the assessment results

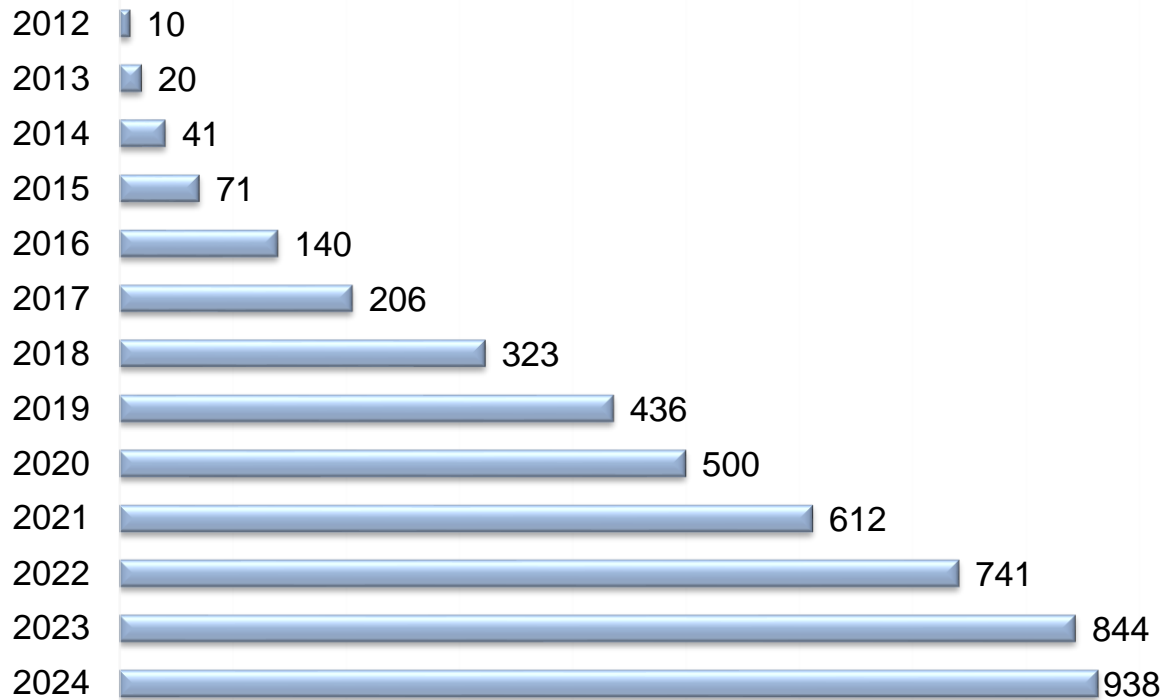
Step 4: Implement and work toward the goals of the plan

Step 5: Assess the impact of implementing the plan and submit progress reports

Step 6: Share solutions, successes and best practices across the Network



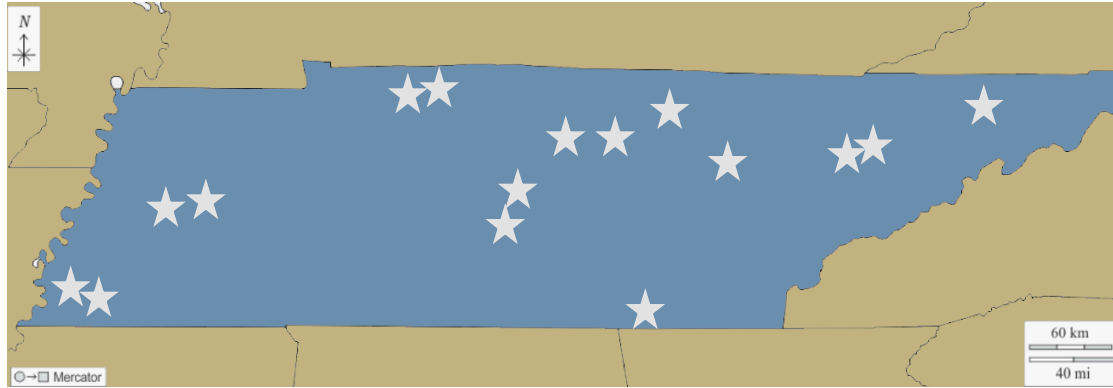
Growth of the Network



Updated 12/6/24



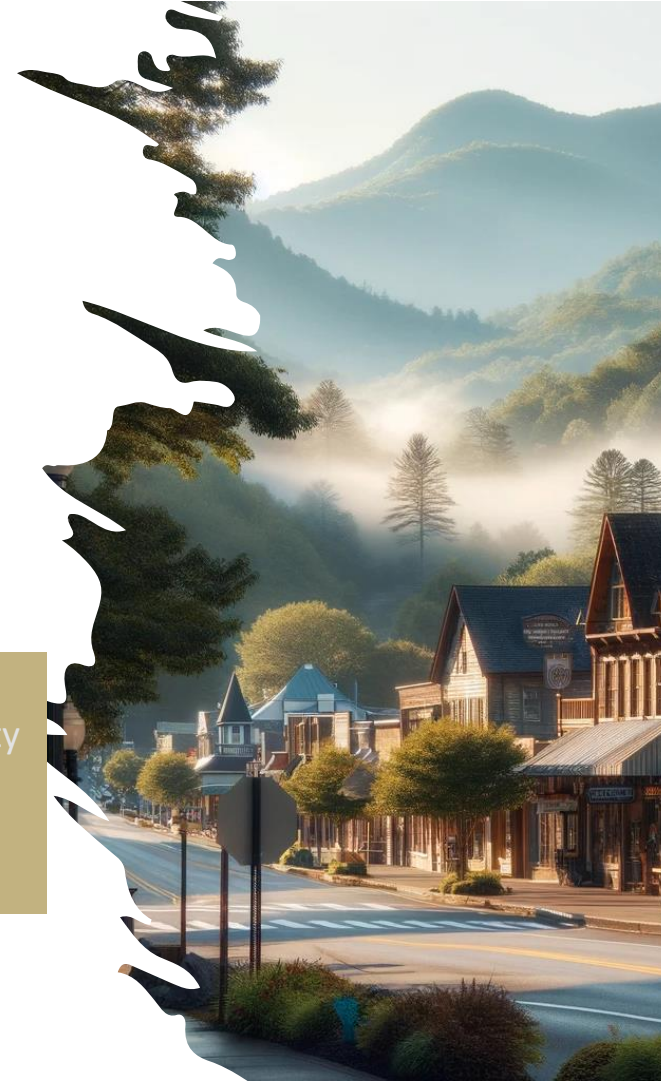
15 Tennessee Age-Friendly Communities



Brownsville
Chattanooga
Clarksville Crossville
Franklin
Gallatin

Hawkins County
Jackson
Knox County
Knoxville
Livingston

Memphis
Montgomery County
Nashville
Shelby County
Wilson County



Age-Friendly in Public Health

- **Enhanced Health Services:** Age-friendly communities improve access to health services, outdoor spaces, and social participation, boosting older adults' self-rated health.
- **Improved Public Space Use:** These communities enhance mobility and independence for older adults by improving access to public transit and reducing various accessibility barriers.
- **Integrated Public Health Initiatives:** Initiatives like those by Trust for America's Health integrate health promotion across sectors, highlighting public health's role in active aging.
- **Social and Physical Infrastructure:** Age-friendly communities provide green spaces and infrastructure that promote physical activity and social interactions, essential for mental well-being.
- **Multi-Sectoral Collaboration:** Collaborative efforts across sectors in AFCs enhance both the physical and social well-being of older adults, supporting engaged community living.
- **Positive Outcomes in Rural Areas:** In rural settings, age-friendly networks increase social connectedness and improve life satisfaction and health among older residents.



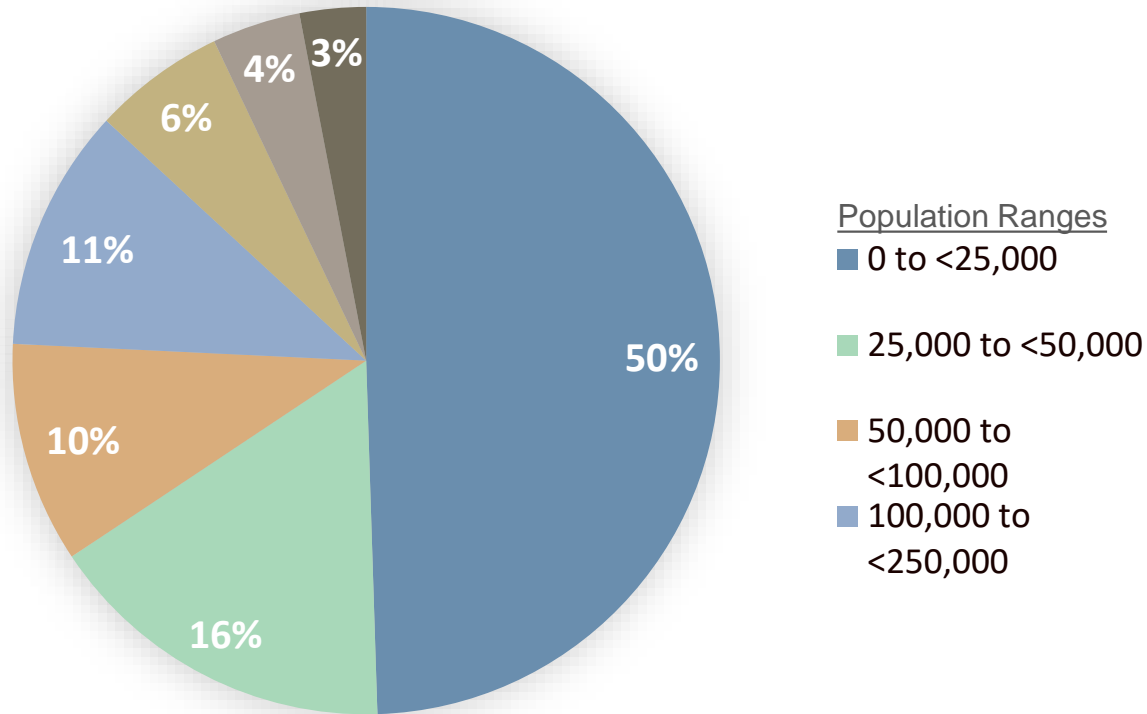
Examples of community focus

- Health and public health outcomes (62%)
- Access to health care (50%)
- Social isolation (52%)
- Family caregivers (45%)
- Dementia-related activities (36%)
- Telehealth/telemed (9%)
- Food insecurity/food deserts (32%)
- Transportation infrastructure (71%)
- Access to public transportation (50%)
- Volunteer driving programs (31%)
- Public safety (27%)



Network Communities

Population Range



Updated 2/26/24 – representing 834 active communities



Municipalities Enrolled by Type

- Cities (40%)
 - Towns (25%)
 - Counties (27%)
 - Other* (5%)
-
- Multi-community efforts: 47 regions (35%)
 - States and Territory (11)
-

* village, township, municipio, unincorporated, borough

Data updated: February 2024



Community Characteristics & Stage

Urban (31%) Rural (40%) Suburban (52%)

- Recently Enrolled (8%)
 - Conducting Assessment (8%)
 - Developing Action Plan (16%)
 - Implementing Action Plan (28%)
 - Writing Progress Report (4%)
 - 2nd or 3rd Cycle (26%)
-

2023 Age-Friendly Community Leadership
Survey



Who's Leading Age-Friendly?

- Municipality (47%)
- Regional Planning Organization: MPO, COG, RPC (18%)
- Taskforce/Advisory Council (12%)
- Nonprofit (8%)
- Senior Center (5%)
- Coalition (4%)
- Volunteers (2%)
- Higher Education (2%)
- Funders (1%), Chamber of Commerce (1%), Healthcare (<1%)

Data updated: February 2024



Municipal Dept. Leading Age-Friendly

- Aging Services (40%)
- Elected Leadership (17%)
- Planning (12%)
- Parks and Recreation (11%)
- Health and Human Services (9%)
- Community Outreach (8%)
- Economic Development (2%)
- Housing (<1%)

Data updated: February 2024



Funding

Communities reporting funding from:

- Municipal/Public Sector (63%)
- AARP/Challenge (44%)
- Private Sector (41%)
- Foundations (27%)

Public and private sector support, 2021 - 2023

	2021		2023
• Public Sector	57%	➡	63%
• Private Sector	34%	➡	41%

2023 Age-Friendly Community Leadership Survey



Municipal Plans Integrating Age-Friendly Lens

Respect and Social Inclusion

Comprehensive plan (76%)

Public Spaces

Parks and trails (12%)

Transportation

Transit/public transportation (45%)

Bike/pedestrian/walk (51%)

Housing

Land development, planning, zoning (44%)

Communication and Information

Digital/broadband (10%)

Community and Health Services

Disaster resilience/mitigation (43%)

Climate/energy (30%)

Civic Engagement and Work

Economic development (45%)

Community business plan (13%)

None (4%)

2023 Age-Friendly Community Leadership Survey



For more information about Age Friendly

AARP.ORG/Livable

- Information about Age Friendly Network
- AARP Community Challenge Grant
- AARP Livable Map
- Livable Community Resources
- AARP Livable Newsletter
- AARP Livability Index



Contact Me:



Mia McNeil, Esq.
State Director

AARP Tennessee

mmcneil@aarp.org





Liz Hall
Email: lizahall@alz.org



Age-Friendly Health Systems



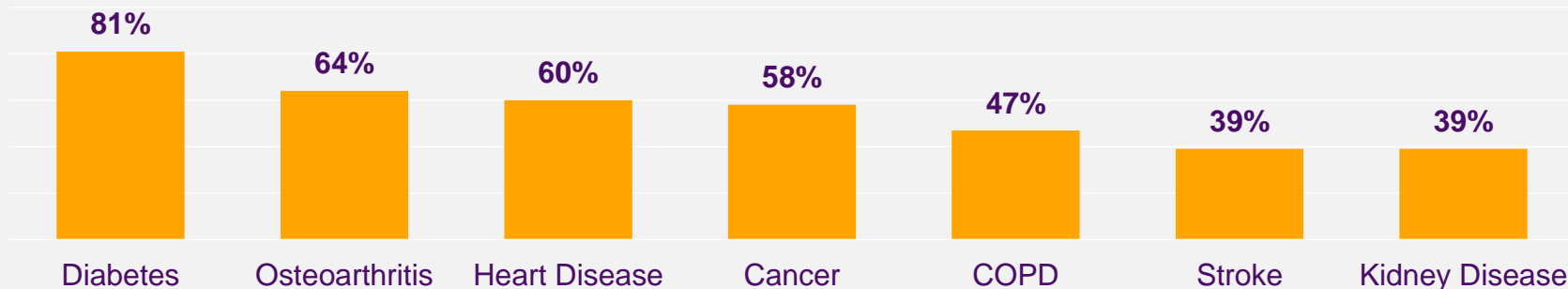
The Association works with health systems and clinicians to:

- Improve health outcomes
- Enhance the patient experience
- Reduce the burden on clinicians
- More effectively manage the cost of care

The Importance of **Detecting and Managing Comorbidities**

- More than 95% of people living with Alzheimer's have at least one other chronic condition
- Mismanagement or additional management increases health care costs

Average Increase in Medicare Costs When Senior With Specified Condition Also Has Alzheimer's



*Chronic Conditions Warehouse, Centers for Medicare and Medicaid Services

Graph: Calculated from 2021 Alzheimer's Disease Facts and Figures, pg. 59, except Osteoarthritis figure: Unpublished data from the National 5% Sample Medicare Fee-for-Service Beneficiaries for 2014

Age-Friendly Health Systems is an initiative of [The John A. Hartford Foundation](#) and the Institute for Healthcare Improvement (IHI), in partnership with the [American Hospital Association \(AHA\)](#) and the [Catholic Health Association of the United States \(CHA\)](#), designed to meet this challenge head on.

Age-Friendly Health Systems aim to:

- Follow an essential set of evidence-based practices;
- Cause no harm; and
- Align with What Matters to the older adult and their family caregivers.



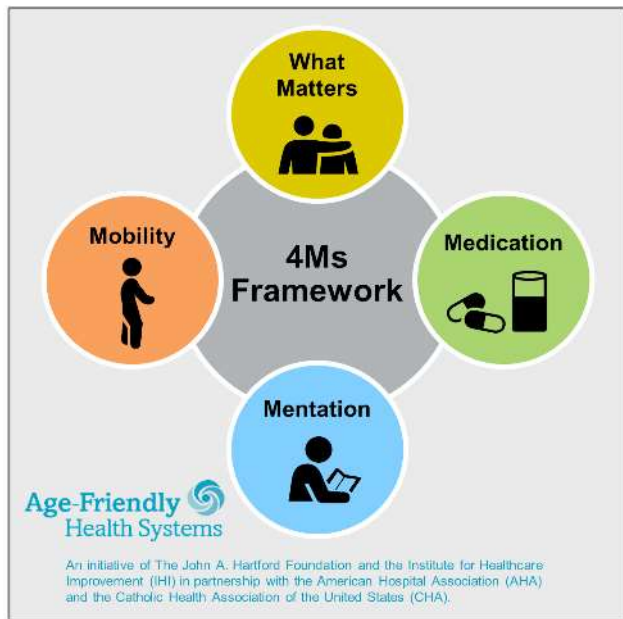
NEW Age-Friendly Hospital Measure

1. Eliciting Patient Healthcare Goals
2. Responsible Medication Management
3. Frailty Screening and Intervention (i.e. Mobility, Mentation, and Malnutrition)
4. Social Vulnerability (social isolation, economic insecurity, ageism, limited access to healthcare, caregiver stress, elder abuse)
5. Age Friendly Care Leadership

TABLE IX.C-1. THE AGE FRIENDLY HOSPITAL MEASURE'S FIVE DOMAIN ATTESTATIONS

Attestation Domain	Attestation Statements: Attest "yes" or "no" to each element. (Note: Affirmative attestation of all elements within a domain would be required for the hospital or health system to receive a point for that domain)
Domain 1: Eliciting Patient Healthcare Goals This domain focuses on obtaining patient's health related goals and treatment preferences, which will inform shared decision making and goal concordant care.	(A) Established protocols are in place to ensure patient goals related to healthcare (health goals, treatment goals, living wills, identification of healthcare proxy, advance care planning) are obtained, reviewed and documented in the medical record. These goals are updated before major procedures and upon significant changes in clinical status.
Domain 2: Responsible Medication Management This domain aims to optimize medication management through monitoring of the pharmacological record for drugs that may be considered inappropriate in older adults due to increased risk of harm.	(A) Medications are reviewed for the purpose of identifying potentially inappropriate medications (PIMs) for older adults as defined by standard evidence-based guidelines, criteria, or protocols. Review should be undertaken upon admission, before major procedures, and/or upon significant changes in clinical status. Once identified, PIMs should be considered for discontinuation, and/or dose adjustment as indicated.
Domain 3: Frailty Screening and Intervention This domain aims to screen patients for geriatric issues related to frailty including cognitive impairment/delirium, physical function/mobility, and malnutrition for the purpose of early detection and intervention where appropriate.	(A) Patients are screened for risks regarding nutrition, mobility, and malnutrition using validated instruments ideally upon admission, before major procedures, and/or upon significant changes in clinical status. (B) Positive screens result in management plans, including but not limited to minimizing delirium risks, encouraging early mobility, and implementing nutrition plans where appropriate. These plans should be included in discharge instructions and communicated to post-discharge facilities. (C) Data are collected on the rate of falls, delirious/alters, and 30-day readmission for patients > 65. These data are stratified by demographic and/or social factors. (D) Protocols exist to reduce the risk of emergency department declines by reducing length of emergency department stay with a goal of transferring a targeted percentage of older patients out of the emergency department within 8 hours of arrival and/or within 1 hour of the decision to admit.
Domain 4: Social Vulnerability This domain seeks to ensure that hospitals recognize the importance of social vulnerability screening of older adults and have systems in place to ensure that social issues are identified and addressed as part of the care plan.	(A) Older adults are screened for geriatric specific social vulnerability including social isolation, economic insecurity, limited access to healthcare, caregiver stress, and elder abuse to identify those who may benefit from care plan modification. The assessments are performed on admission and again prior to discharge. (B) Positive screens for social vulnerability (including those that identify patients at risk of mistreatment) are addressed through intervention strategies. These strategies should include appropriate referrals and resources for patients upon discharge.
Domain 5: Age-Friendly Care Leadership This domain seeks to ensure consistent quality of care for older adults through the identification of an age friendly champion and/or interprofessional committee tasked with ensuring compliance with all components of this measure.	(A) Our hospital designates a point person and/or interprofessional committee to specifically ensure age friendly care issues are prioritized, including those within this measure. This individual or committee oversees such things as quality related to older patients, identifies opportunities to provide education to staff, and updates hospital leadership on needs related to providing age friendly care. (B) Our hospital completes quality data related to the Age Friendly Hospital measure. These data are stratified by demographic and/or social factors and should be used to drive improvement cycles.

Age-Friendly Ecosystem



For related work, this graphic may be used in its entirety without requesting permission. Graphic files and guidance at ihi.org/AgeFriendly

What Matters

Know and align care with each older adult's specific health outcome goals and care preferences including, but not limited to, end-of-life care, and across settings of care.

Medication

If medication is necessary, use Age-Friendly medication that does not interfere with What Matters to the older adult, Mobility, or Mentation across settings of care.

Mentation

Prevent, identify, treat, and manage dementia, depression, and delirium across settings of care.

Mobility

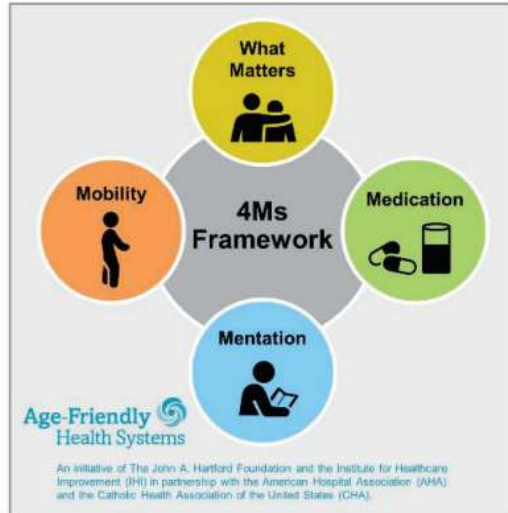
Ensure that older adults move safely every day in order to maintain function and do What Matters.



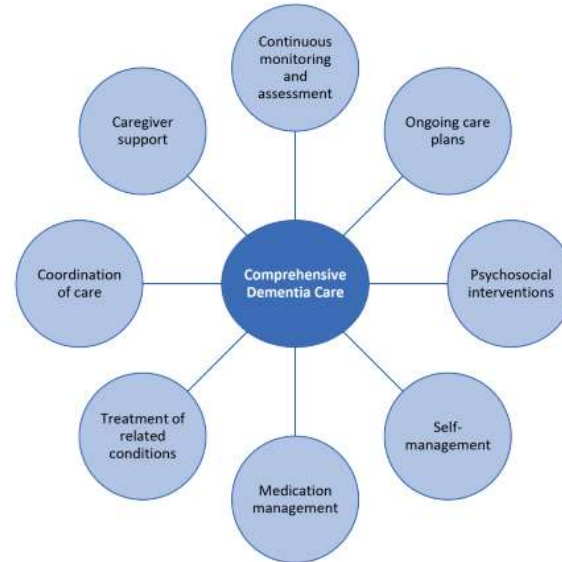


The John A. Hartford
Foundation

Overlap of Age- and Dementia-Friendly Care



4Ms of Age-Friendly Care



8 Core Elements of Comprehensive Dementia Care



<https://pblob1storage.blob.core.windows.net/public/nadrc/docs/6-20-23%20NADRC%20Webinar-Age%20Friendly%20Dementia%20Capable%20Health%20Systems.pdf>

Age-Friendly Tennessee

Level One

Boliver Hospital
CenterWell Senior Primary Care
Encompass Rehab
Indian Path Hospital
Livingston Regional Hospital
Oak Street Health
VA Medical Centers in Johnson City,
Chattanooga, Nashville, and Memphis



Level Two

Cherokee Health Systems – all clinics in East TN
CHI Memorial
Vanderbilt Medical Center
VA Medical Centers in Mountain Home and Murfreesboro

IHI Age-Friendly Resources

www.ihf.org/AgeFriendly

- [Guide to Using 4Ms](#)
- EHR Implementation Guides – [Epic](#) & [Cerner](#)
- [ROI Calculator](#)
- Case Studies
- Action Communities
- [Getting Started Open School Course](#)
- [Hospital Form](#)
- [Friends of Age Friendly Recordings](#)



THANK YOU

Contact Information:
Liz Hall, Health Systems Director
Alzheimer's Association
lizahall@alz.org



Dr. Jodi Southerland

Email: southerlanjl@mail.etsu.edu



EAST TENNESSEE STATE
UNIVERSITY

From Campus to Community:

Advancing Healthy Aging Through Age-Friendly Universities

Jodi Southerland, DrPH

East Tennessee State University, College of Public Health

January 31, 2025

















































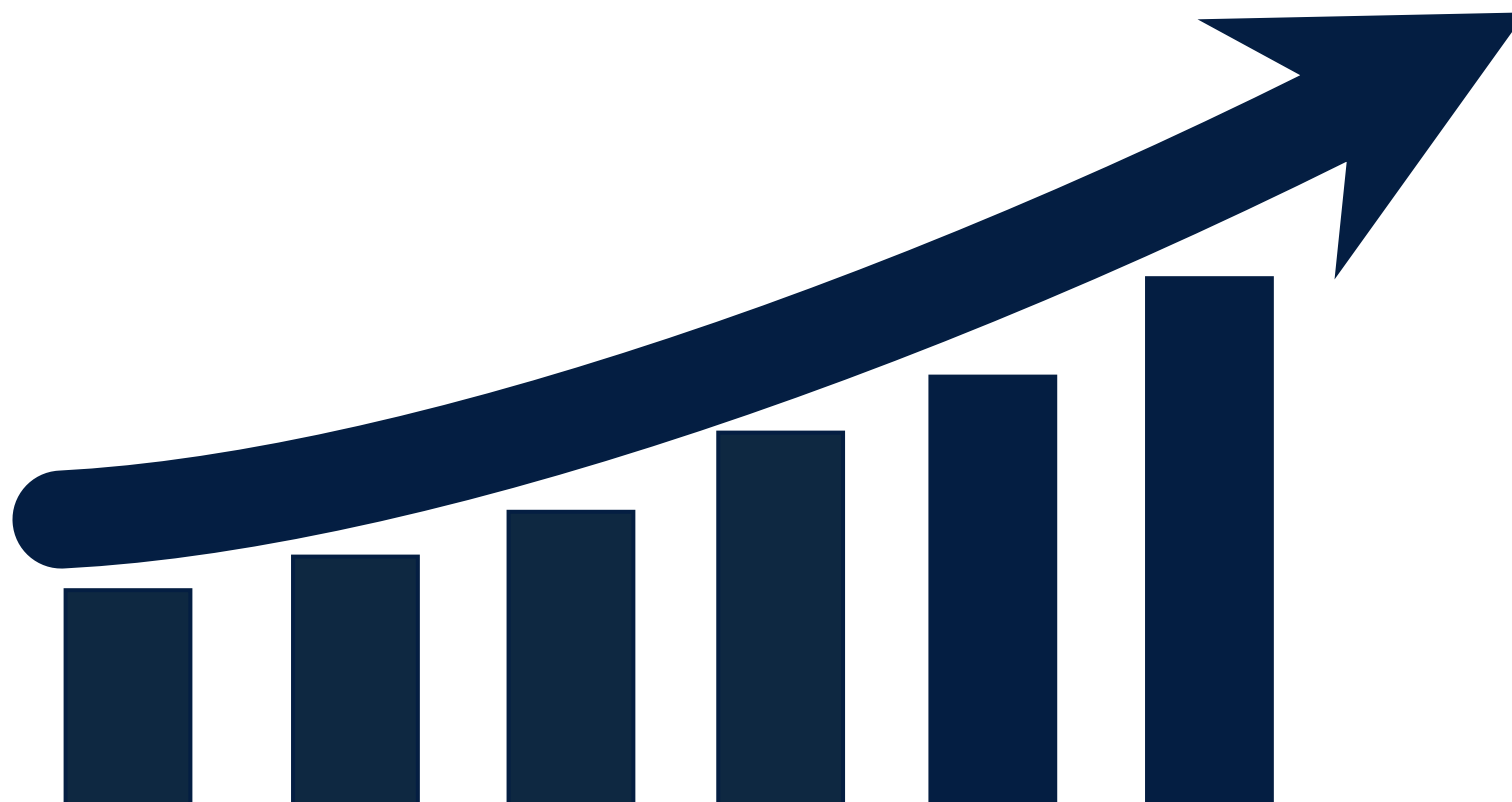
















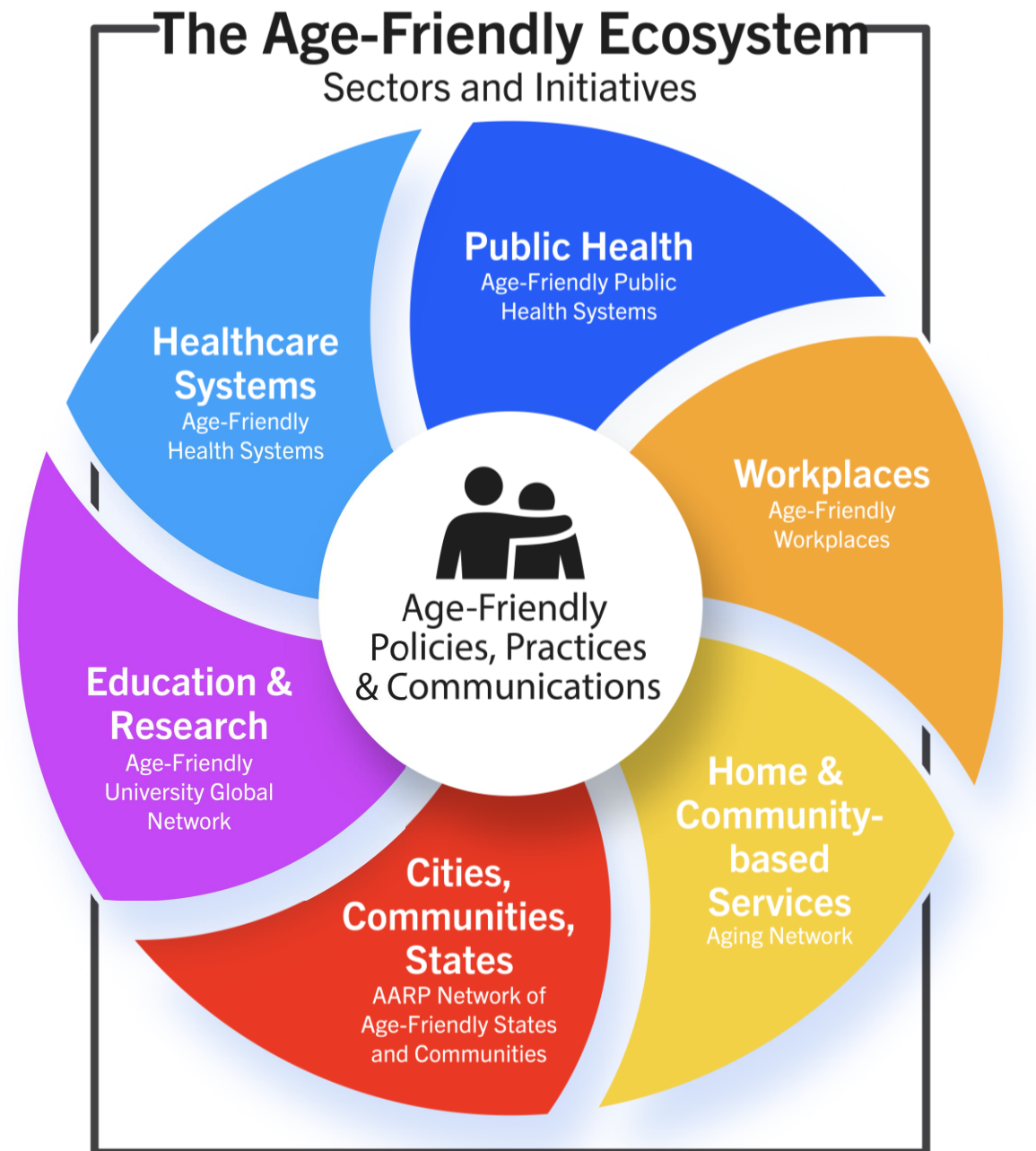


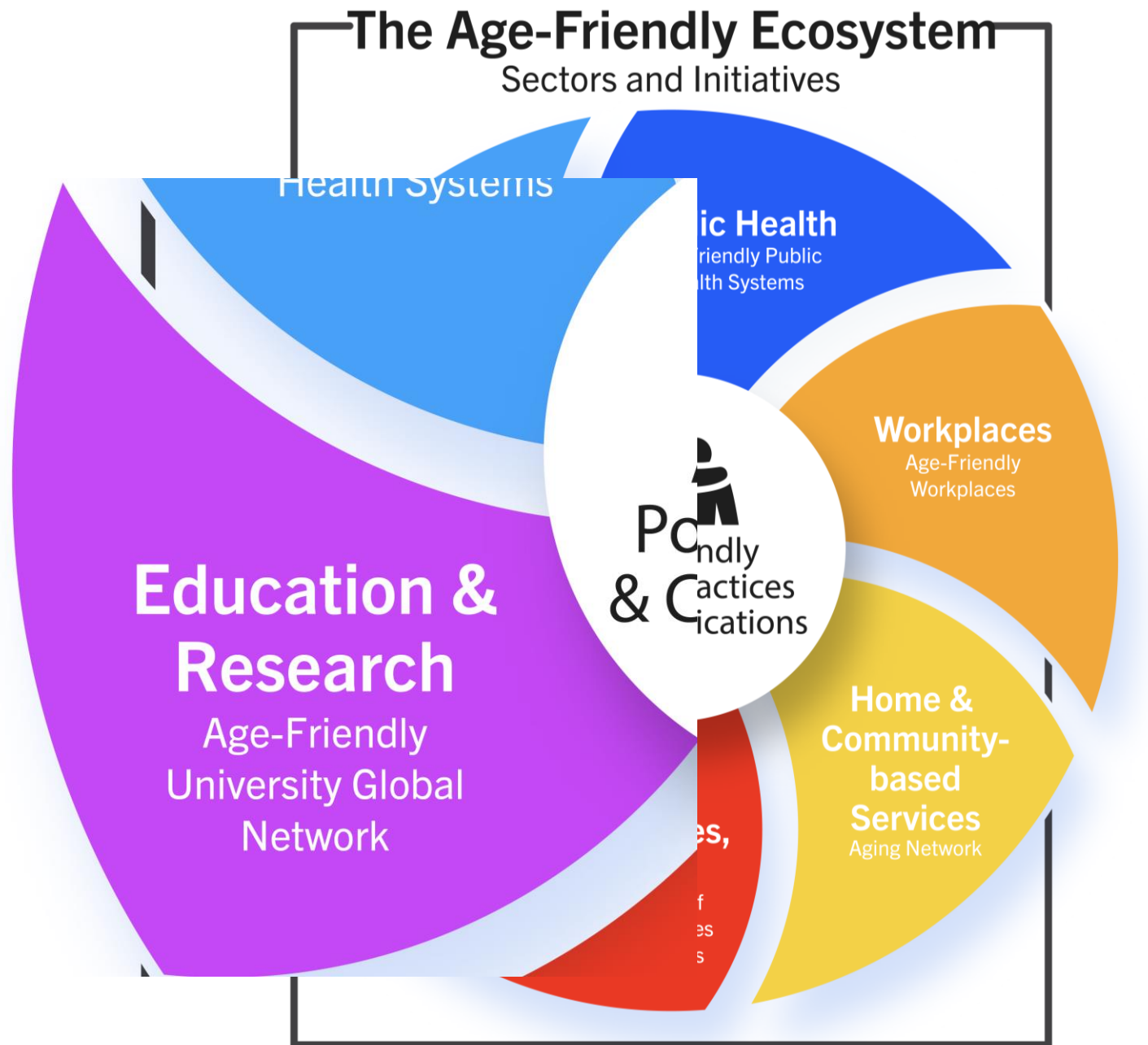








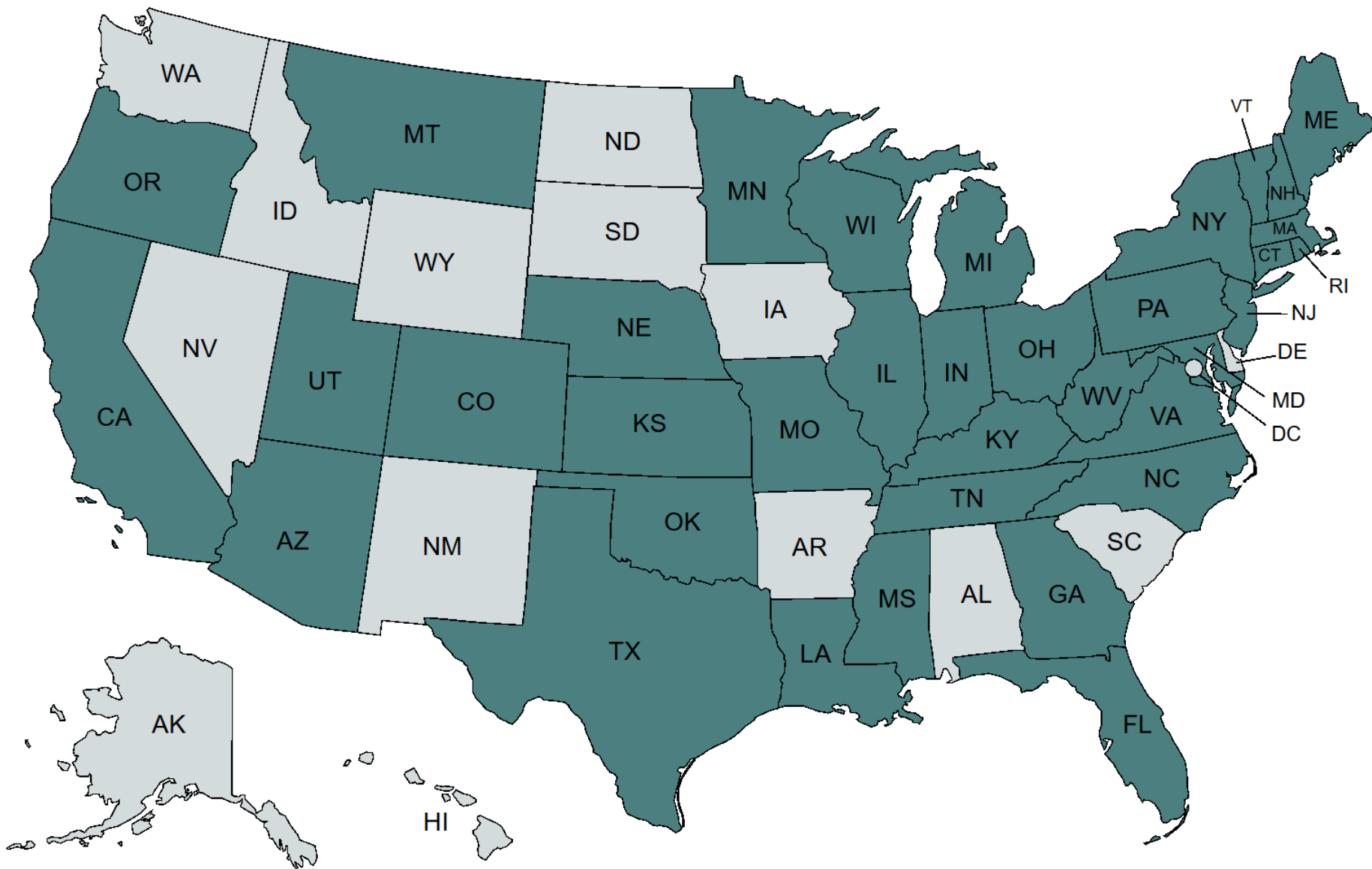


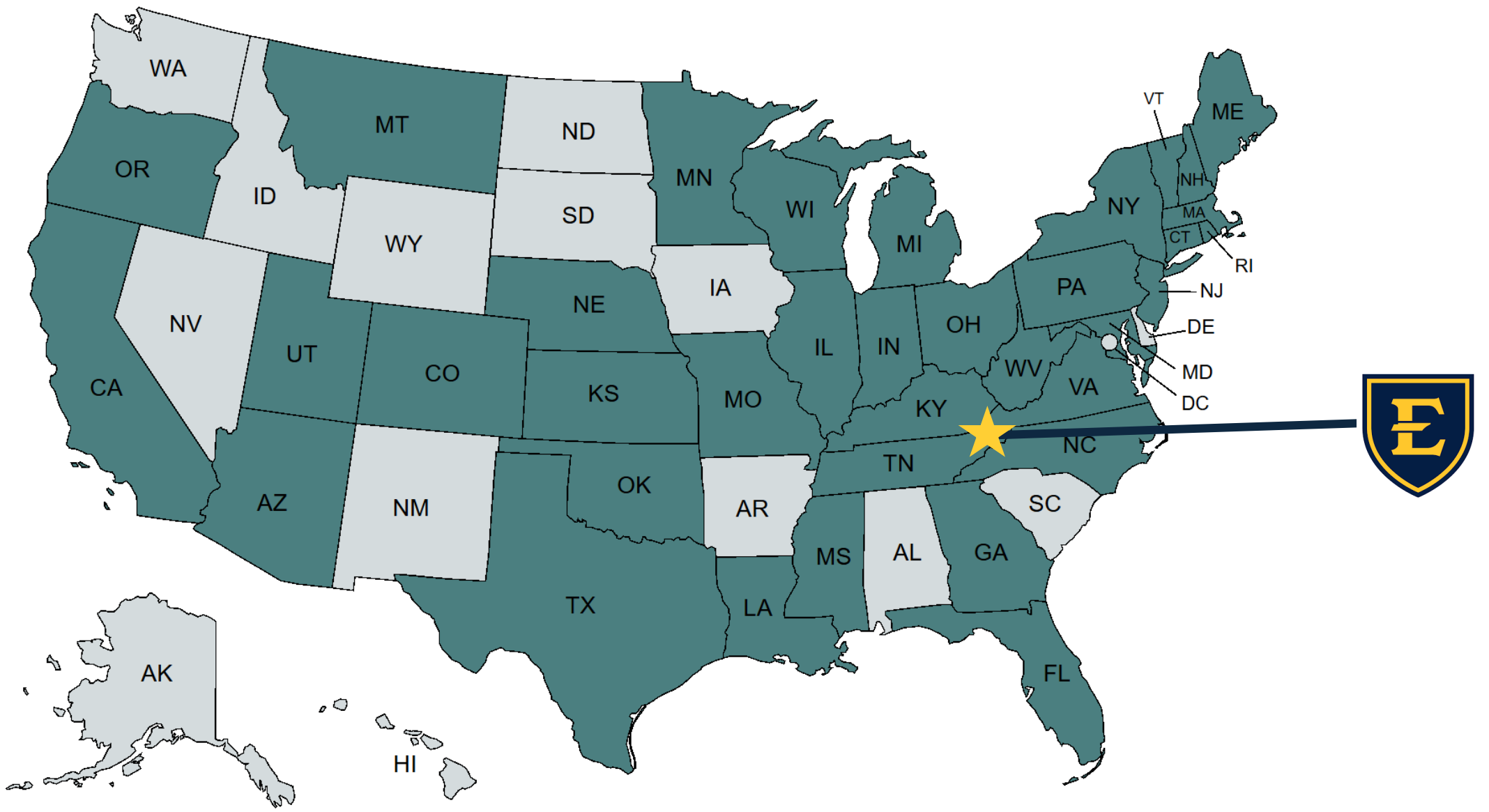




Age-friendly
University
Global Network

- Formed in 2012 at Dublin City University
- Consists of **120+ institutions** of higher education and growing
 - North American Lead: Dr. Aaron Guest, Arizona State Univ
- Newest member: MTSU







Office of
Equity &
Inclusion



Age-friendly
University
Global Network





Office of
Equity &
Inclusion



Age-friendly
University
Global Network

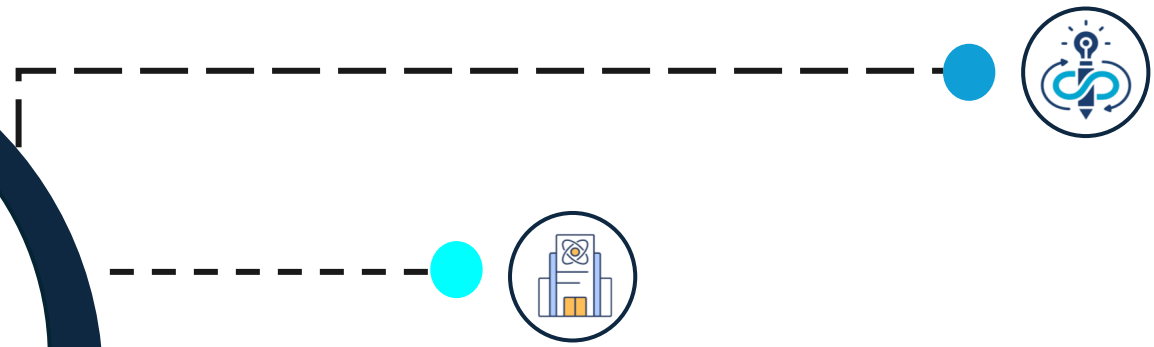




Office of
Equity &
Inclusion



Age-friendly
University
Global Network

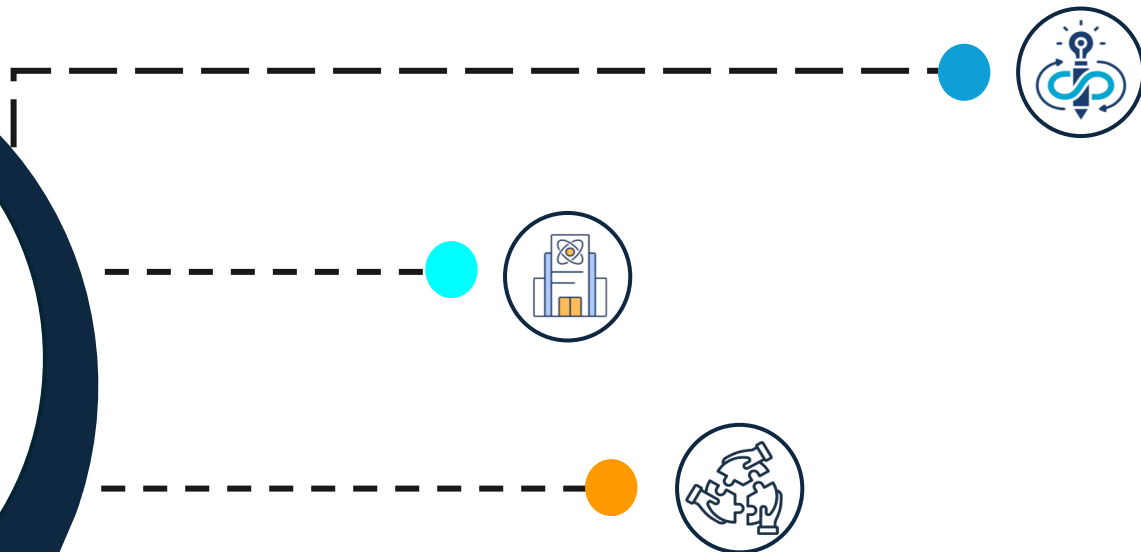




Office of
Equity &
Inclusion

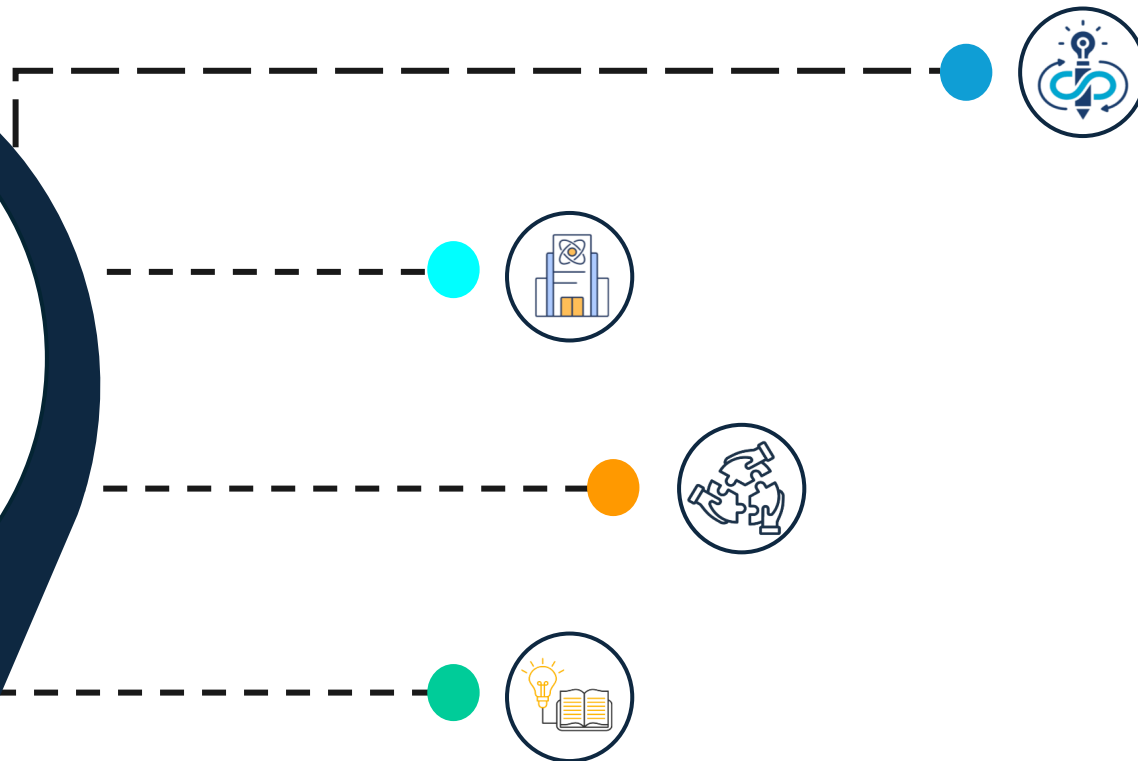


Age-friendly
University
Global Network





Office of
Equity &
Inclusion



Age-friendly
University
Global Network





Office of
Equity &
Inclusion



Age-friendly
University
Global Network





Office of
Equity &
Inclusion



Age-friendly
University
Global Network





**Aging Studies & Public
Health Graduate
Certificate**











**Center for Rural
Health & Research**



DEPARTMENT *of*
PHYSICAL THERAPY

College of Clinical and Rehabilitative
Health Sciences

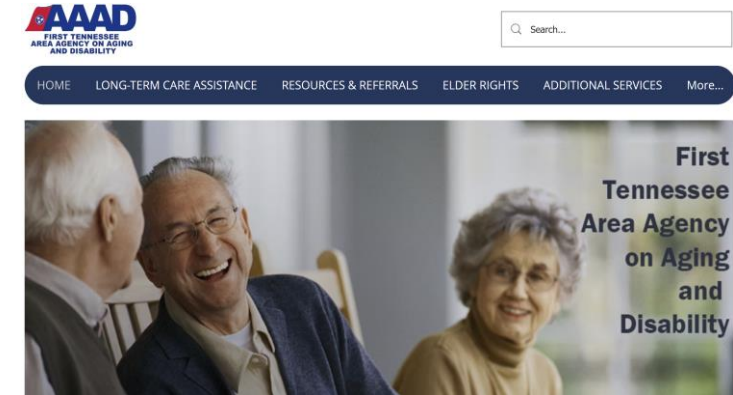
EAST TENNESSEE STATE UNIVERSITY

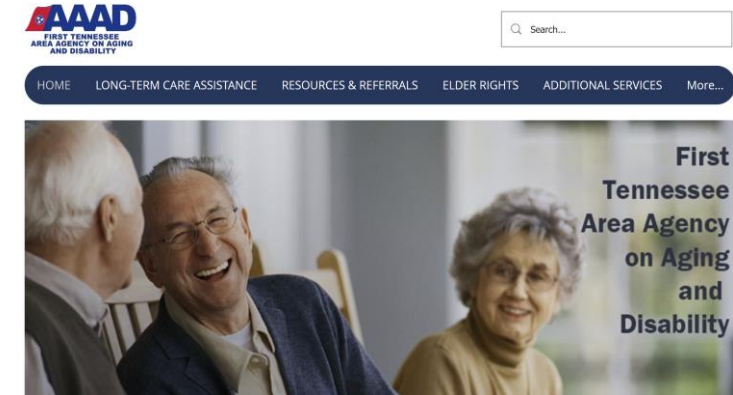


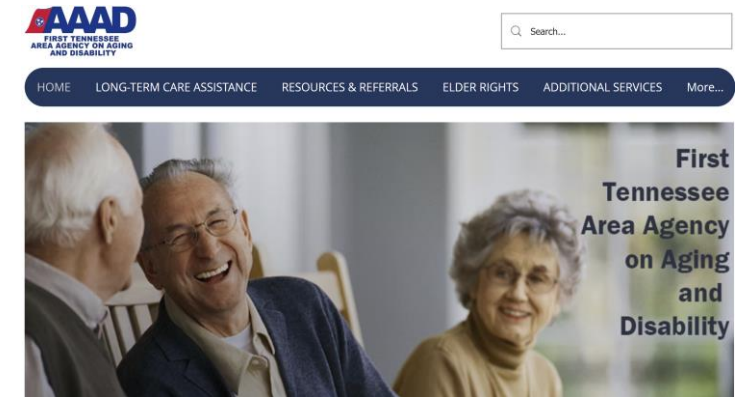


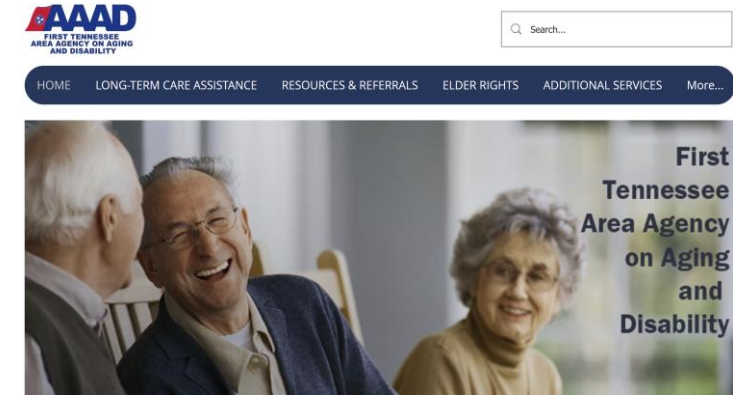


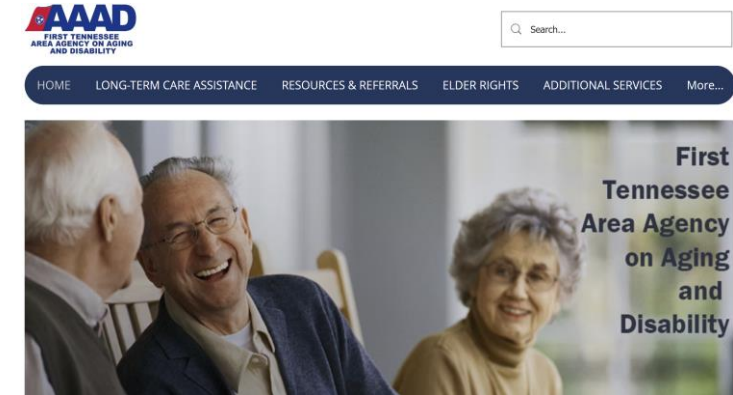


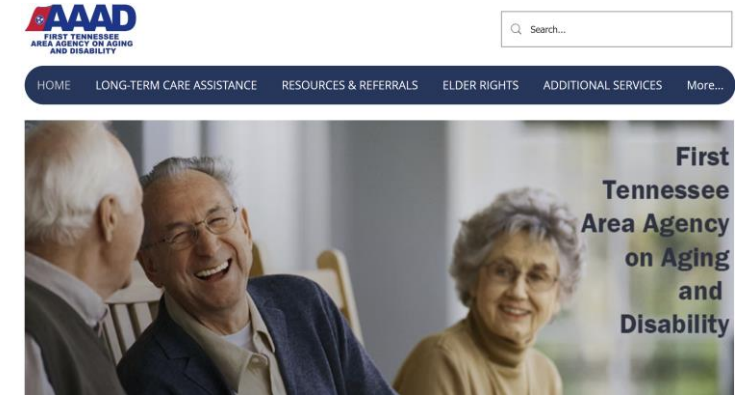


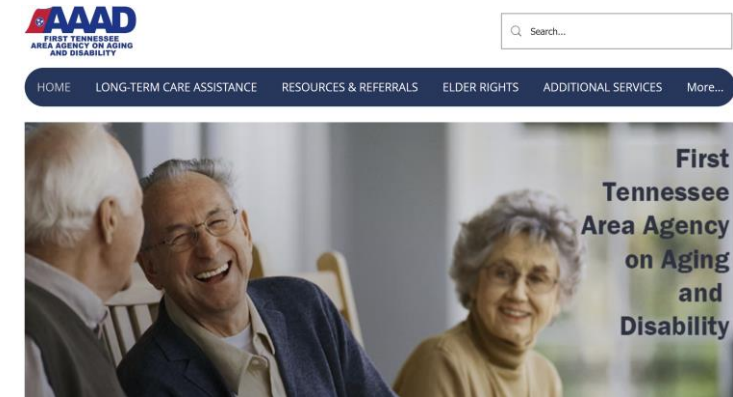


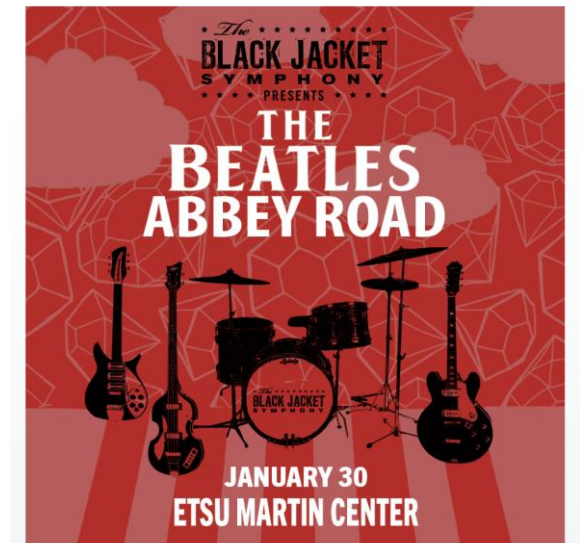
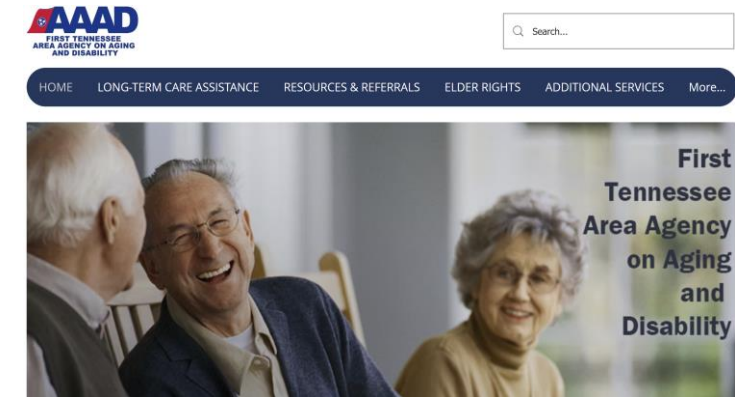












From Campus to Community

Partnering to Advance Healthy Aging



Call to Action



From Campus to Community

Partnering to Advance Healthy Aging



Call to Action



From Campus to Community

Partnering to Advance Healthy Aging



Call to Action



From Campus to Community

Partnering to Advance Healthy Aging



Call to Action



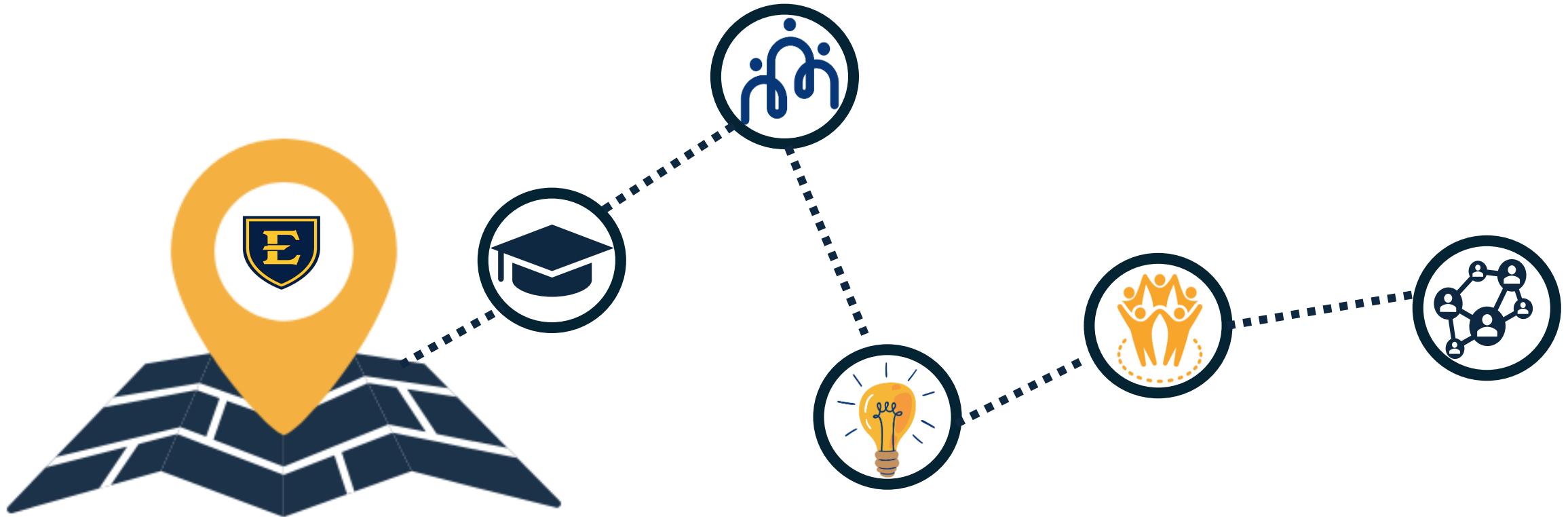
From Campus to Community

Partnering to Advance Healthy Aging



From Campus to Community

Partnering to Advance Healthy Aging

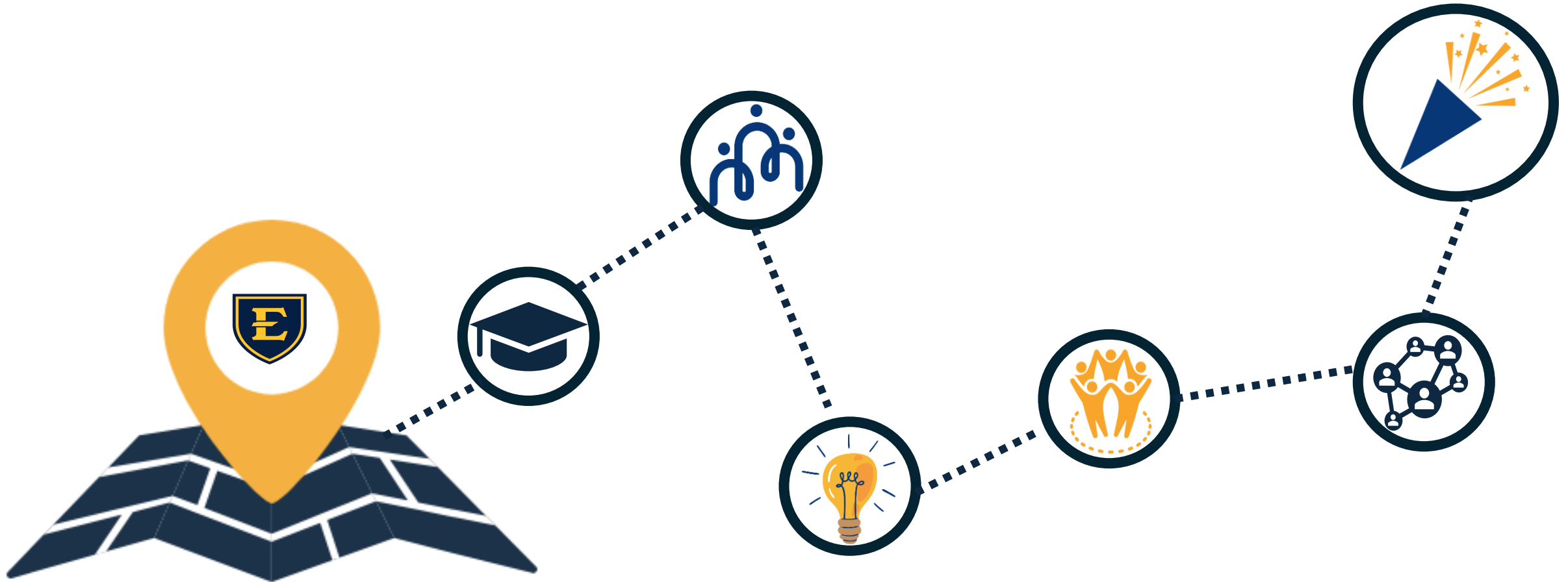


Call to Action



From Campus to Community

Partnering to Advance Healthy Aging



Call to Action





MOSAIC

CENTER FOR AGING &
INTERGENERATIONAL CAREGIVING

LET'S CONNECT!

Jodi Southerland, DrPH

E: southerlanjl@etsu.edu

Assistant Professor

Dept Community & Behavioral Health
College of Public Health, ETSU





Shaun Street

Email: Shaun.Street@tn.gov

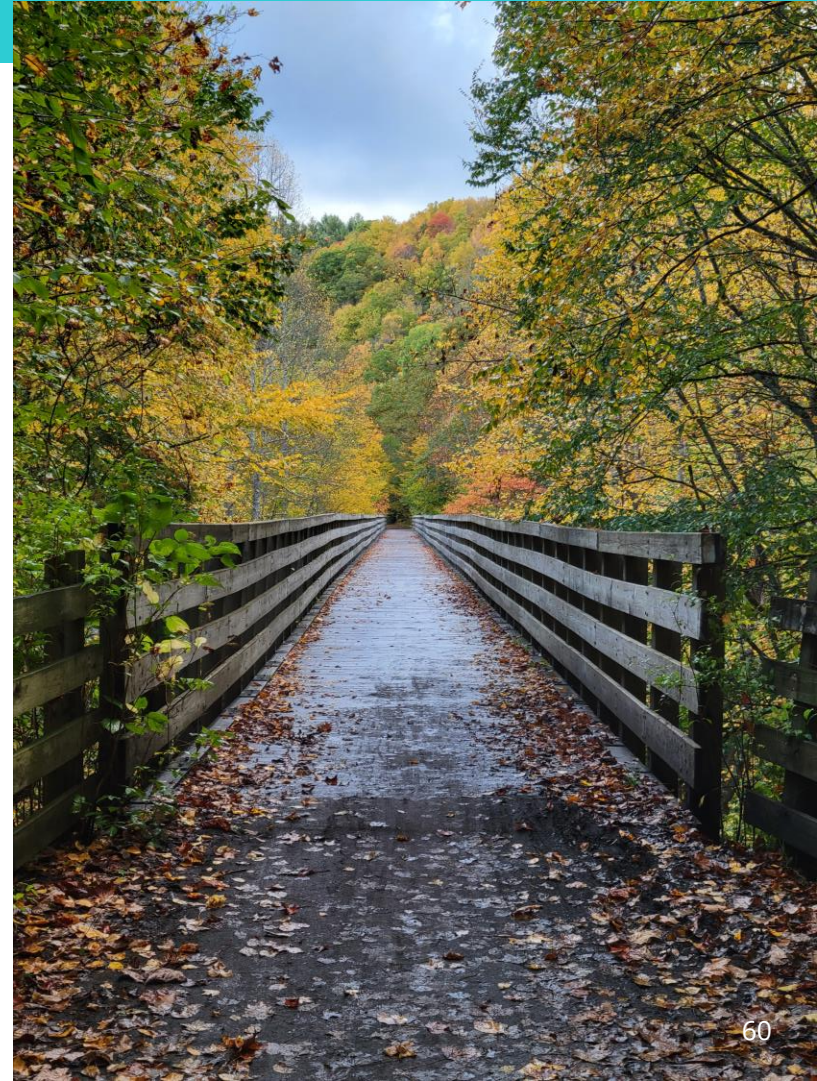


Age-Friendly Public Health and the Hawkins County & Hancock Counties

Shaun C. Street
Public Health County Director

The Why

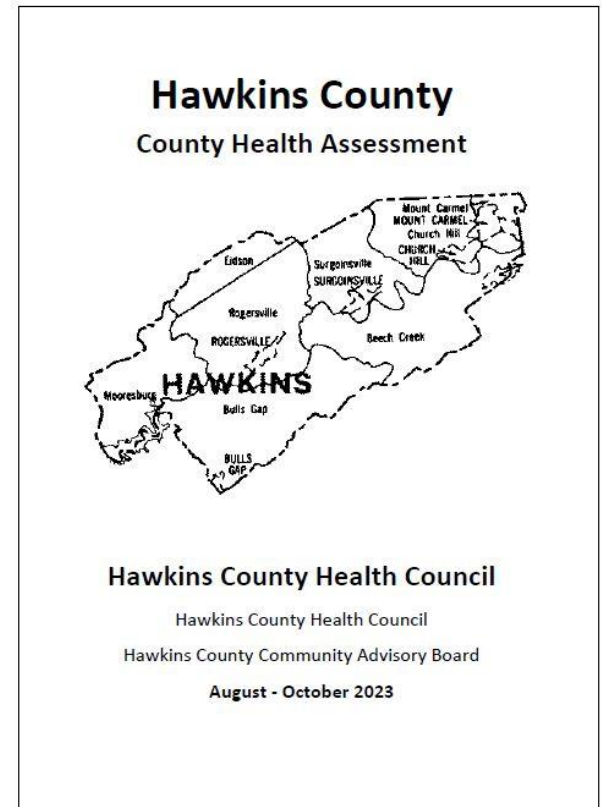
- Demographics of Aging Population in America
- Public Health and Healthy Aging
- Social Determinants of Health: Social Isolation and Caregiving Are Public Health Issues
- Perspectives on Social, Economic, and Health Inequalities in Later Life



The Why By Numbers?

	Hancock County	Hawkins County
Persons 65 years and over, percent	22.7%	17.7%
Population		
Population estimates, July 1, 2023	6,956	58,600
Population estimates base, April 1, 2020	6,661	56,724
Population, percent change April 1, 2020 (estimate base) to July 1, 2023	4.4%	3.3%
Population, Census, April 1, 2020	6,662	56,721
Population, Census, April 1, 2010	6,819	56,833

- The Hawkins County Health Council started its CHA on August 1st, 2023 and completed it on October 20th, 2023.
- The council collected 204 surveys from county residents and held two listening sessions.
- Over 50% of participants were aged 50 and up.
- Nearly 50% of participants had a household income of \$50,000 or less.
- 80% of participants stated that abuse and neglect among older adults was an issue in Hawkins County.
- Adult Mental Health, Cancer, Diabetes, Access to Health Insurance, and Heart Disease were all considered major issues to Hawkins County residents who participated in the survey.



Community Health Improvement Plan (CHIP)

- Needs of Older Adults Subcommittee
 - Objective: Create a transportation survey to collect data and determine need.
 - Objective: Conduct meetings with senior center directors to determine the transportation needs of older adults.
- General Health Subcommittee
 - Objective: Expand access to healthcare that is already in existence & covering multiple areas of need.
 - Focus is set on aging adults.
- Hawkins County Health Council is one of two Health Councils in the state that currently has a priority that focuses on the needs of the aging population.

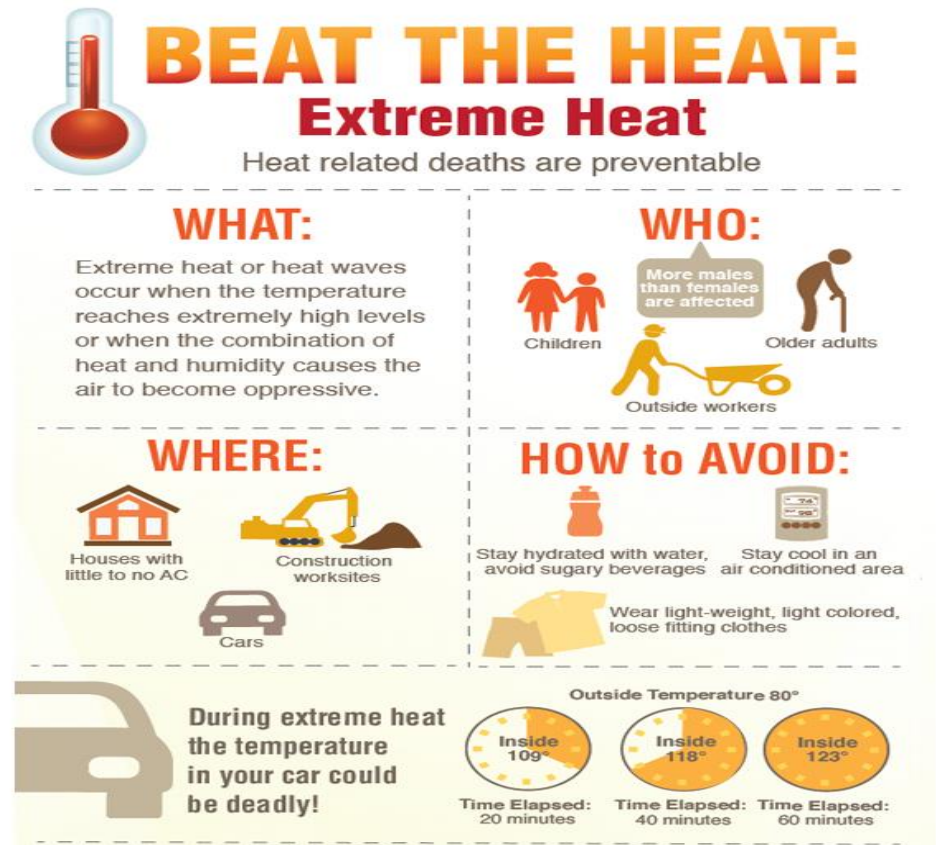
Extreme Heat Tabletop Exercise

- Hawkins County Health Council partnered with the Tennessee Public Health Association and Surgoinsville First United Methodist Church to hold the Extreme Heat Tabletop Exercise on June 3, 2024.
- There were 37 local and regional partners who participated.
- The exercise focused on the needs of the aging population in the county.
- Sharing, educating, planning, and awareness.
- Future plans and accomplishing goals.



Extreme Heat Tabletop Exercise – Next Steps

- TPHA has submitted application for grant to create Train-the-Trainer Program on Climate Education for Resiliency Workshops in Hawkins County
- Hawkins County Health Council will reconvene in Spring 2025 to continue discussion and formalize local response building on success of June 2024 event
- Future plans and accomplishing goals.
 - Invite additional community partners to the table
 - Formalize Plans for county-wide action
 - Replicate Plan for Extreme Cold Weather Events





- READYs Program
 - National public service campaign designed to educate and empower the American people to prepare for, respond to and mitigate emergencies and disasters.
 - The goal of the campaign is to promote preparedness through public involvement.
 - Hawkins County Health Department secured READYs Training for Public Health Week 2024
 - Church Hill Senior Center – 21 participants
 - Rogersville Senior Center – 13 participants
 - Mt. Carmel Senior Center – 25 participants



Ready

Prepare. Plan. Stay Informed.®



AVOID SCAMS



ORAL HEALTH FOR SENIORS



- **READYs Program**
Continue partnering with Senior Center in Hawkins and Hancock Counties in offering READYs Training
- **Naloxone Training**
Continue partnering with Sullivan County Anti-Drug Coalition in conducting Naloxone and Harm Reduction Training in Hawkins and Hancock Counties
- **Preventative Services and Education**
 - Oral Health Education with older adults
 - Continue partnering to provide vaccine clinics specific for older adults
 - Collaborate with UT Extension to provide social media and online scam education to aging adult population.
 - Collaborate with UT Extension to provide fall prevention classes at local senior centers and older adult apartment complexes (2 completed).
 - Provide tobacco cessation information including QuitLine to senior centers and older adult apartment complexes.



Thank you

Questions?



Thank you!