

**Tennessee Board of Nursing
Annual Report
February 17-18, 2016**

BOARD OF NURSING UPDATE

1. **Board Officers: Brent Earwood, APN, Chair; Juanita Turnipseed, APN, Vice-Chair.**
2. **New Board Member: Lee Mills, Public Member**
3. **Brent Earwood represents the Board on the Controlled Substances Monitoring Database Committee (CSMD). Committee meets quarterly.**
4. **Board presentations:**
 - **Dr. Martha Buckner--NCSBN clinical simulation study**
 - **Mike Harkreader--Sexual Boundaries in Nursing**
 - **Caroline Tippens--Signs of Suspicious Deaths**
 - **Teresa Phillips, Liz Sherfy, Linda Johnson—Navigating the BON Website**
 - **Liz Sherfy—Clinical Simulation Guidelines**
 - **Libby Lund—The Enhanced Nurse Licensure Compact**
5. **Rulemaking: Board voted to hold a rulemaking hearing re a comprehensive revision of rules; date to be set after department review**
6. **NCSBN Board of Directors voted to uphold the current passing standard for the NCLEX-RN Examination. The passing standard will remain at the current level that was instituted April 1, 2013.**
7. **2016 & 2017 Meeting Dates:**
 - **February 17-18, 2016**
 - **May 19-20, 2016**
 - **August 3-4, 2016**
 - **November 29-30, 2016**
 - **February 22-23, 2017**
 - **May 17-18, 2017**
 - **August 30-31, 2017**
 - **November 28-29, 2017**

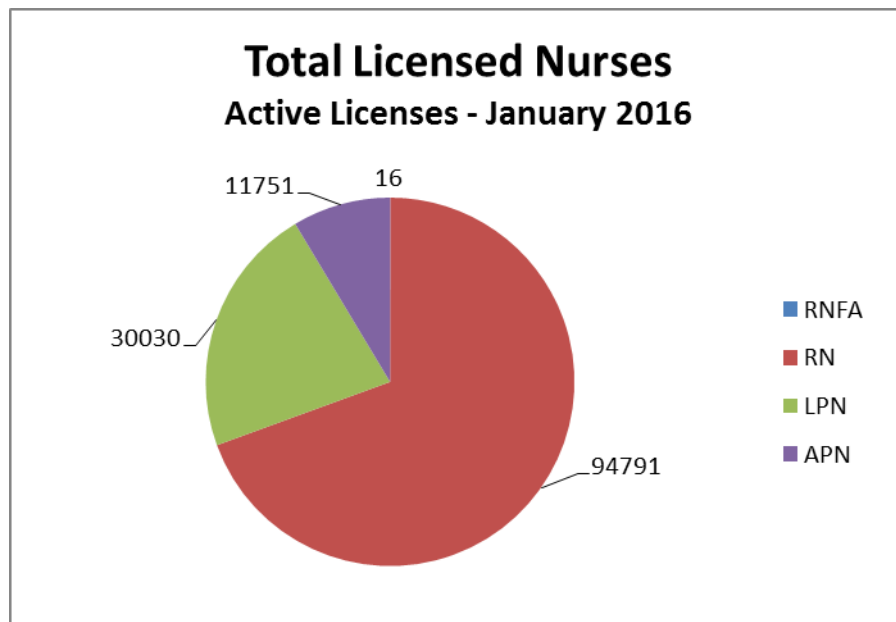
BOARD OFFICE/STAFF UPDATE

1. **Sherry Richardson appointed to nurse consultant position. Richardson will provide nurse consultant function and work with education issues.**
2. **Linda Johnson, APN, appointed to nurse practitioner position. Johnson will support nursing and work with the overprescribing team.**
3. **Project to image RN schools files continues.**
4. **Implemented a revised continuing competency audit system that has resulted in near 100% compliance with stepped up auditing of APNs.**
5. **Lund serves as member-at-large to Nurse Licensure Compact Administrator's Executive Committee.**
6. **Sherfy continues on NCLEX Item Review Sub-Committee (NIRSC).**
7. **LARS computer system replaced RBS—April 2015.**
8. **Transmission of APN licensing data to Nursys on hold until LARS is fully functional; this will allow for APN verification on Nursys.**
9. **New state logo adopted in June. All letters, memos, emails will include this updated logo.**

10. Montana became the 25th state to join the Nurse Licensure Compact; implemented October 1, 2015.
11. Annual reports were sent to schools in October, 2015 via Survey Gizmo and were due back to the Board by December 1, 2015. There are no changes from last year except one additional question: "Do you use another state for clinical experiences? If yes, please list the state they are located."
12. Johnson and Lund presented *Tennessee Chronic Pain Management Guidelines* at multiple locations across the state in 2015.
13. Lund presented information regarding NLC and endorsement instruction to Vanderbilt recruiting staff on October 9, 2015.
14. Phillips and Sherfy presented at the TAMSS (Tennessee Association of Medical Staff Services) annual meeting June 11, 2015. Topics covered included role of the BON, licensing and competency requirements, CSMD requirements, disciplinary process and e-Notify.

LICENSURE DATA: RN, LPN, APN
Active Licenses — January 2016

	Registered Nurse First Assist	Registered Nurse	Licensed Practical Nurse	Advanced Practice Nurse	Total Licenses
Active	16	94,791	30,030	11,751	136,588



ADVANCED PRACTICE NURSES
Active Licenses — January 2016

	CNS	CRNA	CNM	CNP	Total
Authority to Prescribe	119	1,186	170	8,941	10,416
No authority to Prescribe	18	1,375	8	48	1,449
Total	137	2,561	178	8,989	11,865

Advanced Practice Nurses Roles

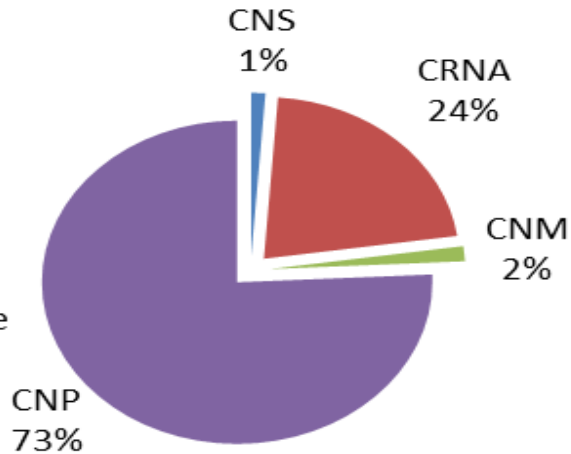
January 2016

■ CNS-Clinical Nurse Specialist

■ CRNA -Certified Registered Nurse Anesthetist

■ CNM-Certified Nurse Midwife

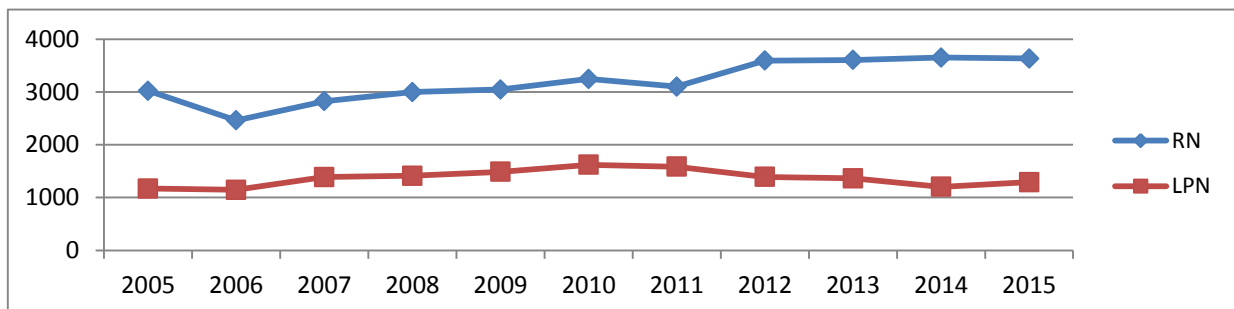
■ CNP-Certified Nurse Practitioner



LICENSED BY EXAMINATION 2005 - 2015

Year	RN	PN
2015	3633	1292
2014	3651	1205
2013	3606	1363
2012	3592	1391
2011	3099	1584
2010	3244	1620
2009	3045	1489
2008	2998	1413
2007	2826	1389
2006	2463	1146
2005	3022	1169

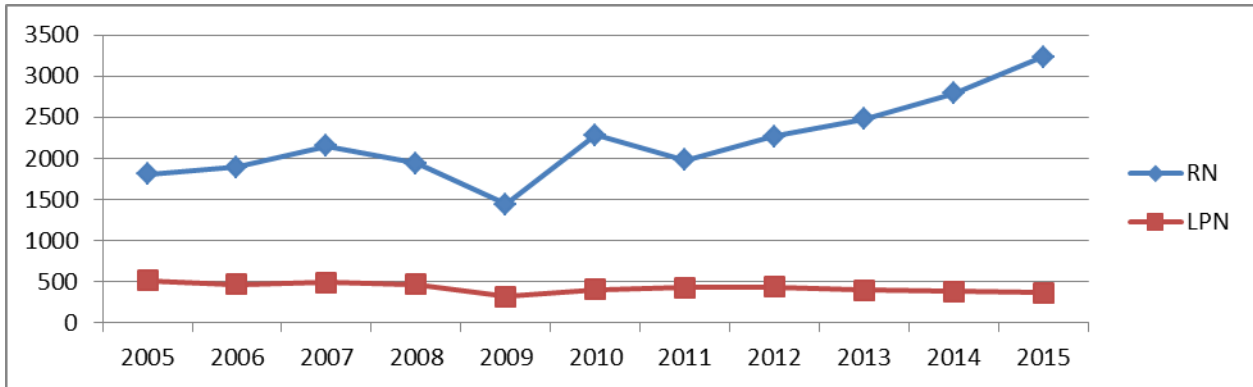
LICENSED BY EXAMINATION



**LICENSED BY ENDORSEMENT
2005 - 2015**

Year	RN	LPN
2015	3234	365
2014	2792	385
2013	2476	398
2012	2271	437
2011	1979	429
2010	2283	405
2009	1443	322
2008	1939	471
2007	2148	492
2006	1896	470
2005	1806	518

LICENSED BY ENDORSEMENT



**Applications for Approval New Nursing Programs
2015**

	Approved	Denied
PN	0	0
Associate	1	0
BSN	0	0
RN to BSN	3	0
Master's	4	0
Doctoral	4	0
Total	12	0

Renewals

APN RENEWALS PER MONTH 2008-2015								
	2008	2009	2010	2011	2012	2013	2014	2015
January	241	249	242	313	348	408	406	412
February	159	238	259	156	323	359	362	357
March	214	241	282	271	336	326	354	394
April	235	237	269	266	300	293	344	395
May	207	249	293	262	308	323	372	357
June	185	267	308	285	311	314	377	380
July	260	281	320	285	330	380	395	418
August	217	263	317	388	396	330	380	451
September	225	242	278	275	343	345	444	416
October	271	261	302	294	353	370	403	374
November	179	220	302	286	345	320	380	402
December	251	288	303	278	281	324	387	410
TOTAL	2,644	3,036	3,475	3,259	3,974	4,092	4,604	4,766

RN RENEWALS PER MONTH 2008-2015								
	2008	2009	2010	2011	2012	2013	2014	2015
January	2788	2942	3043	3107	3334	3564	3501	3701
February	2069	2654	2786	2515	3141	3385	3222	3176
March	2299	2887	2906	2933	3153	3250	3213	3588
April	2609	2965	2989	2604	2798	3000	3014	3102
May	2486	2992	3371	2800	3162	3194	3438	3025
June	1987	3307	3389	3043	2905	3093	3099	3653
July	3160	3194	3450	3043	3647	3513	3936	3713
August	2562	3313	3333	3217	3687	3520	3589	3891
September	2749	2955	3099	3128	3199	3251	3829	3593
October	2977	2933	3185	3047	3501	3546	3425	3378
November	2337	2592	3209	2957	3201	2895	3253	3380
December	2643	2904	3091	2646	2965	3359	3384	3415
TOTAL	30,666	35,638	37,851	35,040	38,693	39,570	40,903	41,615

LPN RENEWALS PER MONTH 2008-2015								
	2008	2009	2010	2011	2012	2013	2014	2015
January	1016	1180	1076	1056	1107	1210	1115	1196
February	735	1092	1070	597	1164	1181	1127	1037
March	850	1021	1033	1048	1012	1080	1097	1134
April	916	1131	1113	904	921	1045	964	1072
May	880	1247	1190	928	1057	1072	1067	1022
June	758	1273	1359	1036	984	1029	905	1142
July	1078	1254	1272	1036	1177	1233	1297	1194
August	915	1208	1237	1101	1219	1256	1141	1211
September	993	1038	1157	1072	1080	1053	1122	1123
October	1015	1050	1275	1011	1224	1173	1119	1125
November	890	874	1208	1015	1031	991	1085	1077
December	988	996	1110	891	1056	1051	1159	1025
TOTAL	11,034	13,364	14,100	12,519	13,032	13,374	13,198	13,358

Disciplinary Action by Type-Totals for 2015

Profession	Reprimand	Revoke	Stayed revocation	Probation	Revoke PTP	Voluntary Surrender	Civil Penalty	Deny	Suspend	Cease & desist	Totals
RN	22	21	48	22	3	37	5	6	23	0	187
LPN	8	14	18	8	2	13	0	2	14	0	79
APN	7	6	3	5	0	6	3	1	6	0	37
Total	37	41	69	35	5	56	8	9	43	0	303

Disciplinary Action by Type February 2015

RN	7	0	16	9	1	6	1	0	0	0	40
LPN	3	0	6	3	0	1	0	0	1	0	14
APN	3	0	0	2	0	1	1	0	1	0	8
Total	13	0	22	14	1	8	2	0	2	0	62

Disciplinary Action by Type May 2015

RN	0	12	15	3	0	9	1	4	1	0	45
LPN	3	5	6	1	0	2	0	2	1	0	20
APN	2	2	3	1	0	0	2	1	0	0	11
Total	5	19	24	5	0	11	3	7	2	0	76

Disciplinary Action by Type August 2015

RN	5	4	0	4	2	10	3	2	19	0	49
LPN	0	3	0	1	2	5	0	0	10	0	21
APN	1	3	0	0	0	4	0	0	5	0	13
Total	6	10	0	5	4	19	3	2	36	0	85

Disciplinary Action by Type November 2015

RN	10	5	17	6	0	12	0	0	3	0	53
LPN	2	6	6	3	0	3	0	0	2	0	22
APN	1	1	0	2	0	0	0	0	0	0	5
Total	13	12	23	11	0	15	0	0	6	0	80

Discipline for 2015

