

## Sentinel Provider Influenza-Like Illness (ILI) Surveillance Summary For the Week of September 27- October 3, 2009 (Week 39)

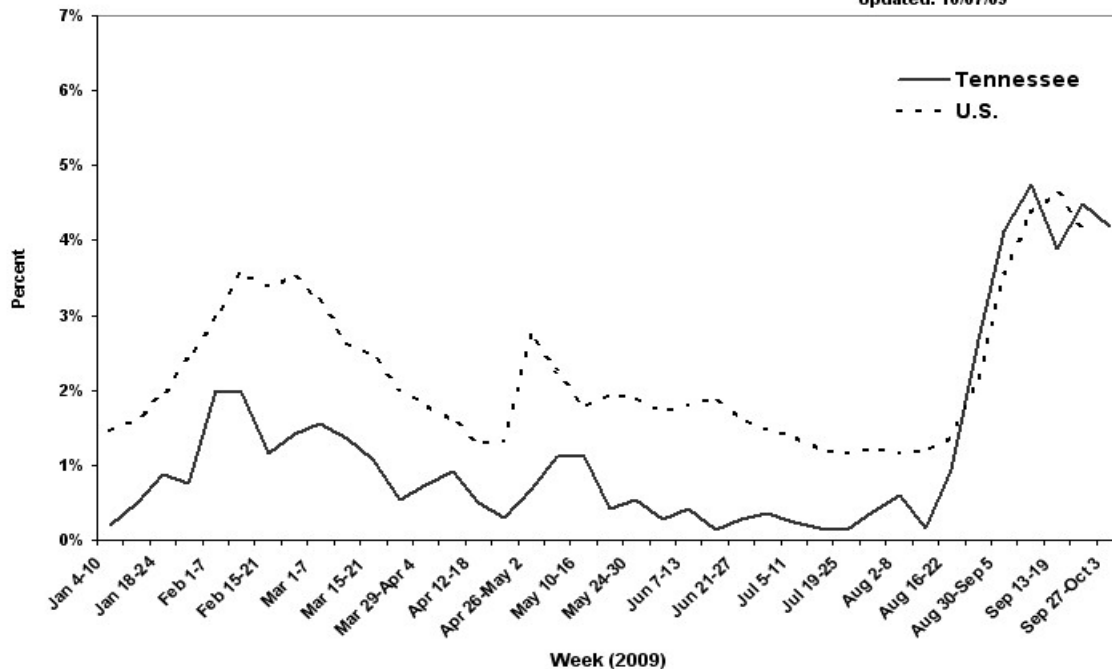
Summary for	# Providers reporting	Total Providers	Total Regional ILI	Total Regional Patients	% ILI	Comparison to State*
Chattanooga-Hamilton County	2	4	18	425	4.2%	
East Tennessee Region	5	7	178	2250	7.9%	higher
Jackson-Madison County	0	1	0	0	0.0%	
Knoxville-Knox County	1	5	6	194	3.1%	
Mid-Cumberland Region	8	12	103	1647	6.3%	higher
Memphis-Shelby County	2	2	14	638	2.2%	lower
Nashville-Davidson County	2	5	36	1042	3.5%	
Northeast Region	2	3	4	448	0.9%	lower
South Central Region	3	3	4	282	1.4%	lower
Southeast Region	4	5	27	908	3.0%	
Sullivan County	2	2	7	374	1.9%	lower
Upper Cumberland Region	5	5	29	1660	1.7%	lower
West Tennessee Region	6	6	11	571	1.9%	lower
State of Tennessee	42	59	437	10439	4.19%	

**The percentage of patients with ILI reported by the TN SPN was 4.19% for Week 39 - up from 3.88% reported in Week 38. Of 141 specimens tested, 41 (29.1%) were positive by PCR for influenza: 100% were pandemic H1N1. Sentinel Providers (SPs): please note that CDC's ILI reporting format (not reflected in this summary report) will have new age groupings (0-4y, 5-24y, 25-49y, 50-64y, 65+y) for ILI reporting starting the week of October 4-10. The SPN Protocol (eff. Sept 1, 2009): SPs report ILI by the end of Tuesday following the end of the reporting week; collect and ship specimens from ILI cases on Mondays and/or Wednesdays (maximum 10/wk) using the SPN Specimen Collection Form dated 8/21/09.**

The CDC reports that the percentage of patients visiting outpatient healthcare providers in the Sentinel Provider Network (SPN) with influenza-like-illness (ILI) when influenza viruses are not circulating is expected to fall at or below a specific SPN baseline [nationwide = 2.2%, East South Central region (AL, TN, MS, KY) = 2.4%]. When the percentage of patients with ILI exceeds this baseline, this suggests that influenza viruses may be circulating.

\*The percentage of influenza-like-illness patients seen in each region is compared to the statewide average. Regions with percentages statistically-significantly different from the state average are noted as "higher" or "lower."

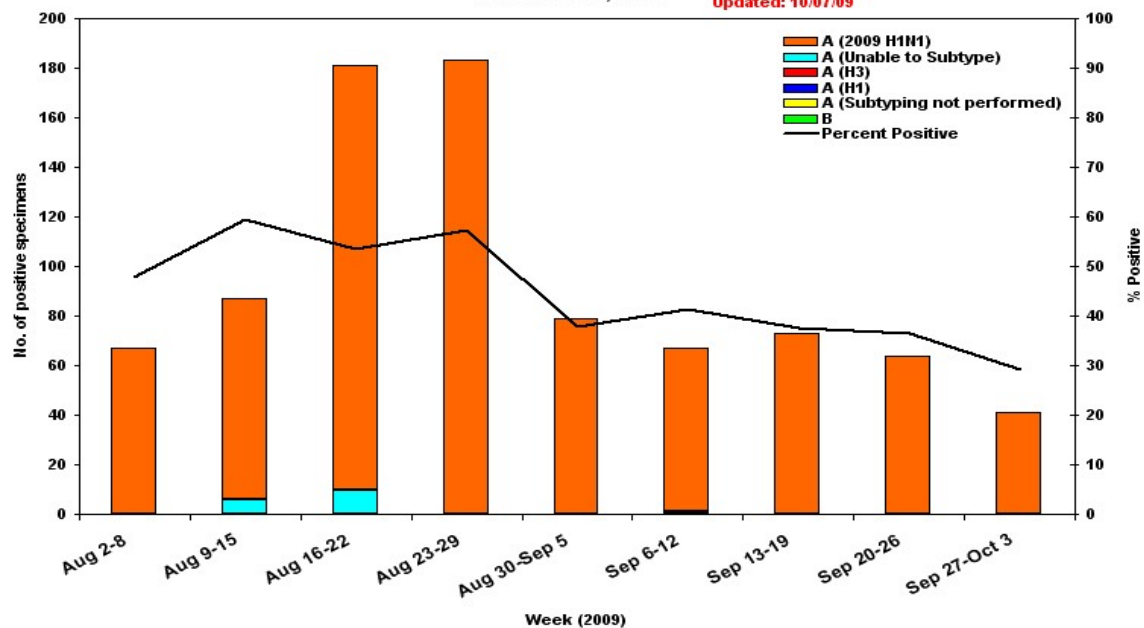
Percentage of Outpatient Visits Reported by the U.S. and Tennessee Outpatient Influenza-like Illness Surveillance Network (ILINet) as Influenza-like Illness  
Updated: 10/07/09



State Public Health Laboratory  
Influenza PCR - specimens from all sources

Month 2009	Report Week	# Rec'd	Pan H1N1	A (H1)	A (H3)	B
Aug.	35	209	79	0	0	0
Sept.	36	162	66	0	1	0
	37	194	73	0	0	0
	38	175	64	0	0	0
	39	141	41	0	0	0
Oct.	40					
	41					
	42					
Nov.	43					

Influenza Positive Tests Submitted to TN Dept. of Health Laboratory Services, Tennessee, 2009  
Updated: 10/07/09



Laboratory testing is now done specifically for Seasonal A (H1) A(H3) & B virus subtypes, in addition to Pandemic A (H1). Non-subtyped and non-subtypable results are no longer reported in this chart or on the state map.

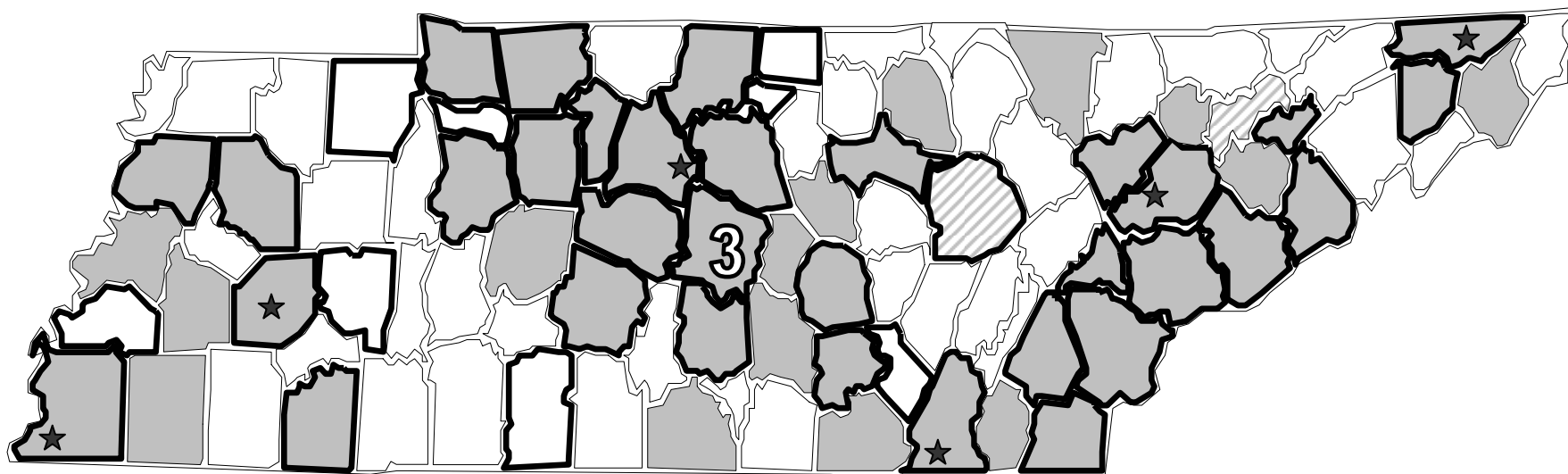
All Sentinel Provider specimens MUST now be accompanied by the SPN Influenza Submission form dated 8/21/2009, or testing will not be done.


This table shows all specimens tested by the State Lab. The state lab policy for influenza testing is at <http://health.state.tn.us/H1N1.htm#hcp>.

# Influenza confirmed by culture or PCR in Tennessee from specimens collected by any source within the past 6 weeks.


August 23, 2009 to October 3, 2009

- Strains are reported by county of case residence or, if unknown, county where the specimen was collected.
- Counties where influenza sentinel providers are located are identified with bold boundary lines.
- Stars marks counties with large metropolitan populations (Memphis, Jackson, Nashville, Chattanooga, Knoxville, and the Tri-Cities area)
- Novel 2009 H1N1 results are for confirmed cases identified by PCR testing; counties with their first Novel 2009 H1N1 positive result in the past 6 weeks are indicated by diagonal striping.



 Pandemic A (H1N1)

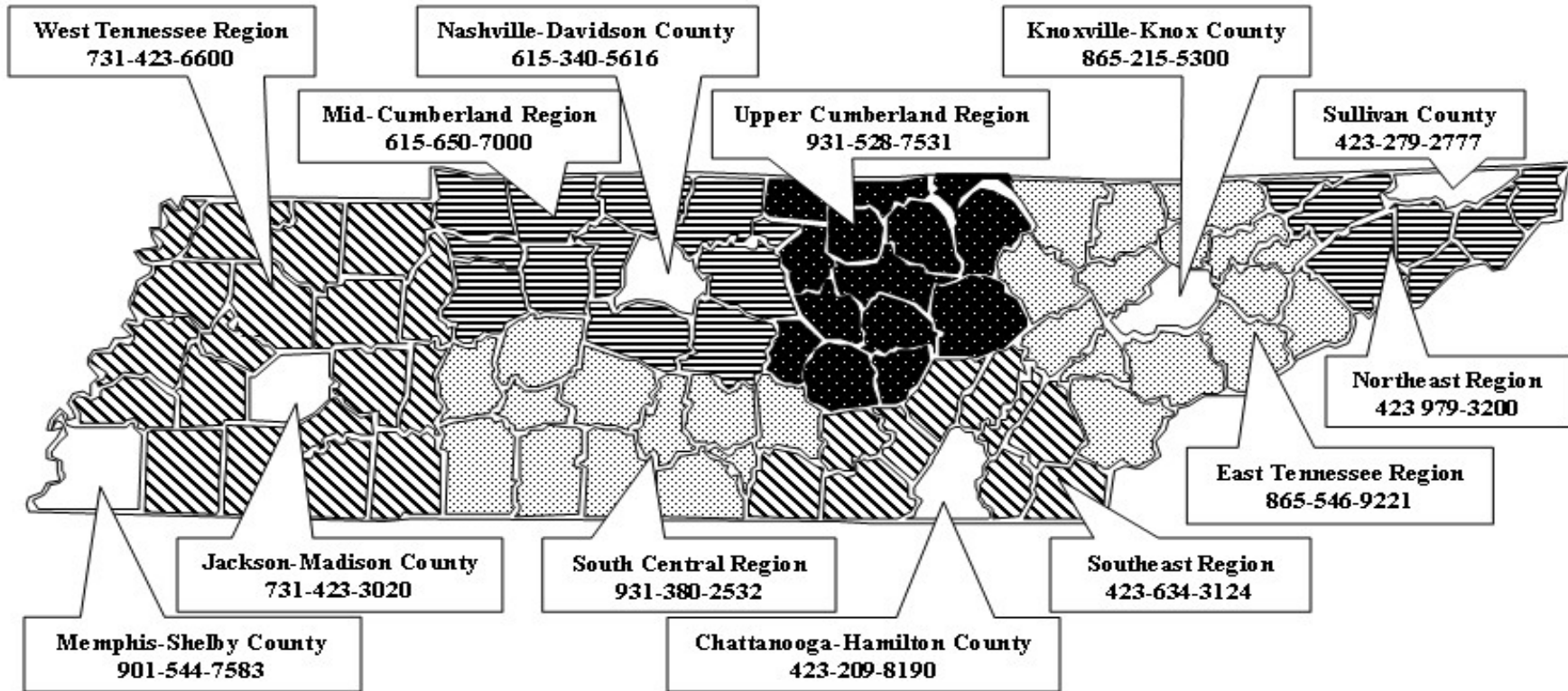
 Seasonal A (H1)

 1<sup>st</sup> Pandemic A (H1N1) in past 6 weeks

 Seasonal A(H3)

 Seasonal B

# TENNESSEE SENTINEL PROVIDER NETWORK



## ***Important Information***

**Novel influenza:** [www.cdc.gov](http://www.cdc.gov) or  
<http://health.state.tn.us/H1N1.htm>

**Submit weekly reports to:**  
[www.ncid.cdc.gov/flu/](http://www.ncid.cdc.gov/flu/) or Fax 888-232-1322

### **State Lab:**

• Jerry Hindman or Susan McCool  
615-262-6351 or 6374

### **SPN Questions:**

• Regional SPN Coordinator (see map)  
• Robb Garman or Robert Taylor  
800-404-3006 or 615-741-7247