



# Health Council Community of Practice (CoP)

# Introductions

- Welcome!
- Please type in the chat:
  - Name
  - Your title
  - Organization
  - County



**Hello**  
my name is

*Frannie  
Co-Pilot  
Texas Highway  
"Support"*

# What brings you here today?

- **Educate** by collecting and sharing information – from experts as well as from peers
- **Support** by organizing peer-to-peer interactions and collaboration
- **Cultivate** by assisting groups to start and sustain their learning
- **Encourage** by promoting the work of members through discussion and sharing
- **Integrate** by encouraging members to use their new knowledge for real change in their own work

# Agenda

- Opening
- Social Determinants of Health (SDOH) Fact Sheet
- Partner Spotlight: Rural Health Association and Tennessee Community Compass (TCC)
- Breakout Groups
- Announcements
- Closing



# Opening

- Think about a time when something outside of a doctor's office impacted your health or well-being....

*What stood out to you about that experience?*



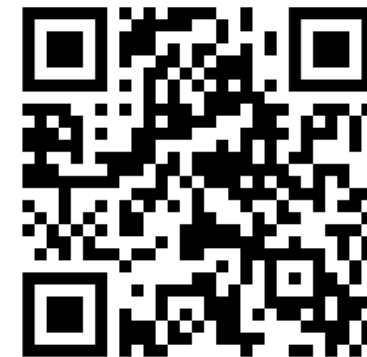
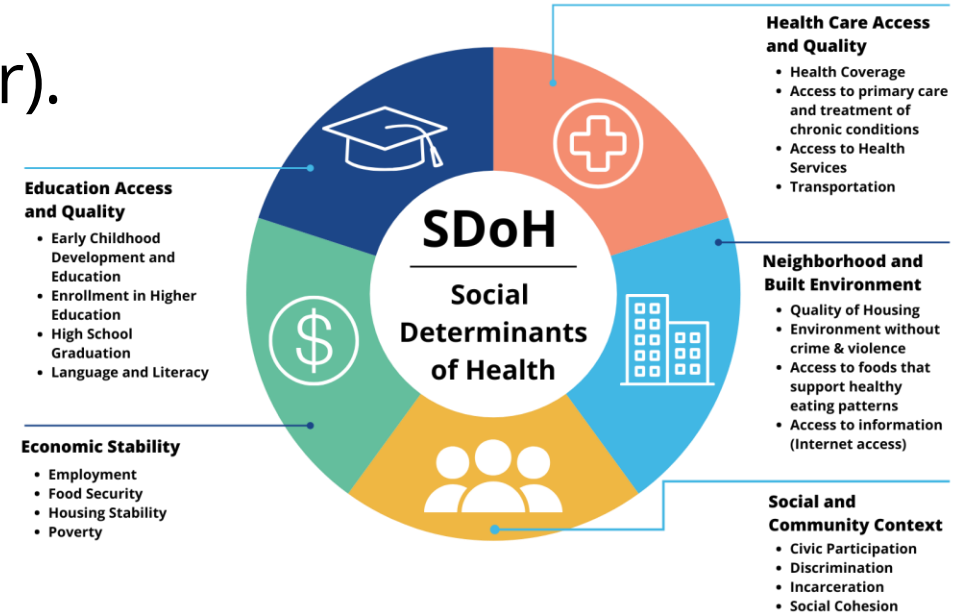
# Social Determinants of Health: Fact Sheet



# Rural Health Association: TN Community Compass

# Breakout Groups (10 minutes)

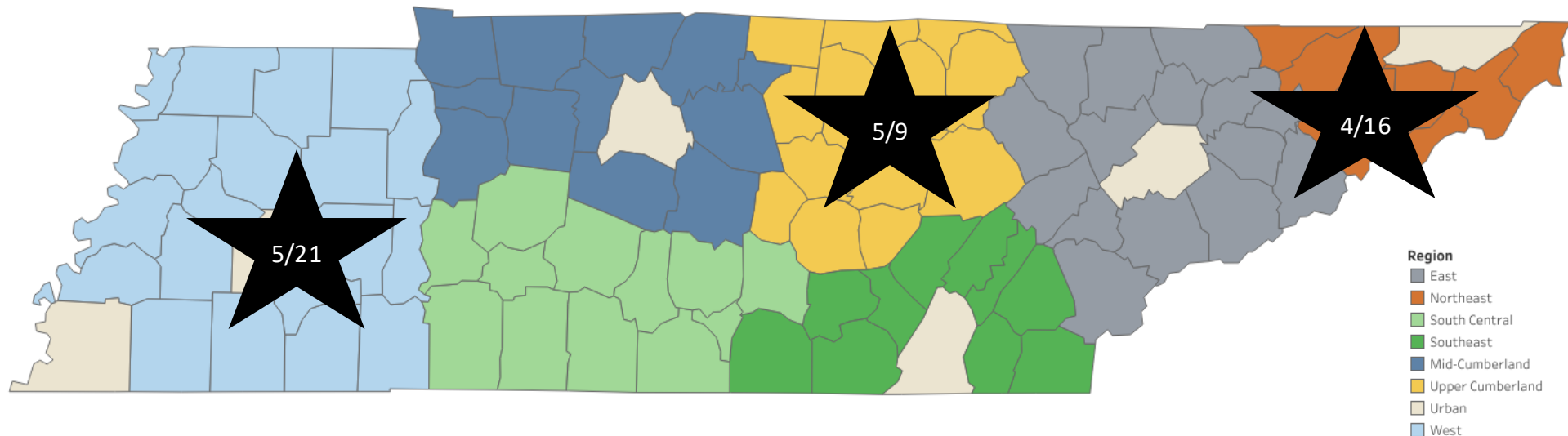
1. Introduce yourself (in alphabetical order).
2. Choose a SDOH category.
3. Go to **communitycompass.tn.gov**.
4. Explore your own zip code.
5. *Discussion:* What opportunities you see to **use this resource**? What **organizations** do you know are missing?





# Registration OPEN: Spring Summits

- **East:** Wednesday, April 16, in Greeneville
- **Middle:** Friday, May 9, in Cookeville
- **West:** Wednesday, May 21, in Jackson



# Health Council Panel

- Nominate a Health Council you know who has done great work engaging members and partners!



## **Excellence in Public Health Leadership – Individual Award**

This award honors an individual who has demonstrated exceptional leadership in advancing community health.

Nominees should showcase:

- A clear role in driving meaningful public health change.
- Measurable outcomes and lasting impact on community health.
- Significant contributions to policy development, system improvements, or environmental advancements.

## **Transformative Health Policy, Systems, and Environmental Award**

This award recognizes health councils or their members for outstanding contributions to public health through policy, systems, or environmental change.

Nominees should demonstrate:

- Leadership in implementing innovative public health initiatives.
- Tangible, long-term benefits to public health.
- Successful policy or system improvements that enhance community well-being.

**Deadline April 11<sup>th</sup>, 2025 11:59pm CST**

## **2025 Community of Practice Awards Application**



These awards recognize outstanding contributions by County Health Councils and their members. They celebrate individuals and teams demonstrating exceptional leadership, innovation, and impact in advancing community health.

<https://tdhrc.health.tn.gov/redcap/surveys/?s=99H7JCCPPAXKHE7K>

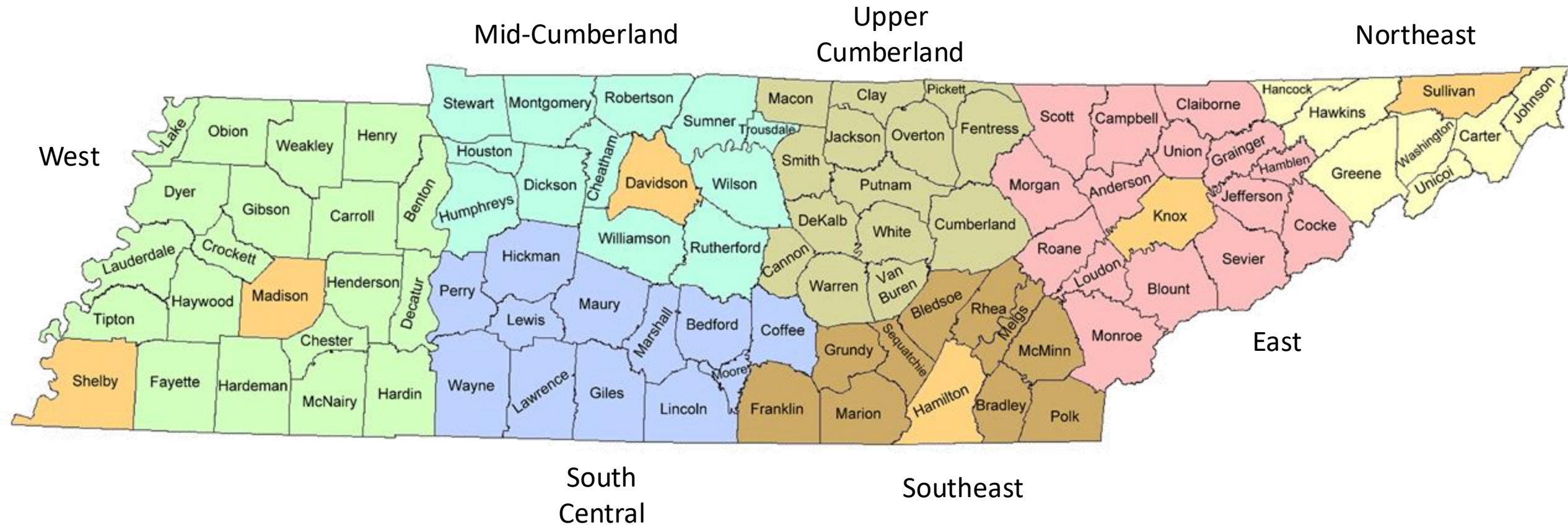
# Regional Calls (quarterly)

- *Southeast*: Monday, April 28, 2:00-2:30pm ET
- *East*: Wednesday, April 30, 2:30-3:00pm ET
- *Northeast*: Friday, May 2, 10:00-10:30pm ET
- *West*: Monday, May 5, 1:00-1:30pm CT
- *Mid-Cumberland*: Friday, May 16, 10:30-11:00am CT
- *Upper Cumberland*: Monday, May 19, 1:00-1:30pm CT
- *South Central*: Friday, May 23, 10:30-11:00am CT





# Health Department Regions



# Monthly Call

- Thursday, **April 10**, 10:30am CT/ 11:30am ET
  - Mental Health Support with NAMI



# County Health Council Communication

*Newsletter*



*Website*



*CoP*



# Share-out

- Share any **events** or **resources** you have for the group.





# Closing

- I used to think \_\_\_\_\_, and then I learned \_\_\_\_\_,  
so now I will\_\_\_\_\_.





**Atlee Tyree**  
**Community Engagement Strategist**  
**[atlee.tyree@tn.gov](mailto:atlee.tyree@tn.gov)**



**Thank you / Questions**