



# TN NHSN User Call

Monday, March 21<sup>st</sup>, 10am CT

# Call Agenda

- **COVID-19 Update**
  - Magdalena Dorvil-Joanem, MD, MPH
- **NHSN Update**
  - Vicky Reed, AAS, RN, CIC
- **Project Firstline**
  - Jena Skinner, BSN, RN, CIC
- **TN Data trends**
  - Christopher Wilson, MD, MPH

# TDH NHSN Team

- **Dr. Simone Godwin, DVM, MPH, MS**
  - Senior NHSN Epidemiologist
  - Drug Diversion Team Epidemiologist
  
- **Vicky Reed, AAS, RN, CIC**
  - Senior NHSN Public Health Nurse Consultant
    - Lead Technological Assistance
  - Infection Prevention and Control Specialist
  
- **Tara Suhs, MPH**
  - Assistant NHSN Epidemiologist
  - MRSA Initiative Lead
  
- **Ashley Gambrell, MPH**
  - Assistant NHSN Epidemiologist



# **COVID-19 Update**

*from the Tennessee Department of Health*

**TN**

**Tennessee Department of  
Health**



**NHSN Updates**

# 2022 Q1 Newsletter

- <https://www.cdc.gov/nhsn/newsletters/index.html>

Newsletters / Members Meeting Updates

2022

[2022 Q1 \(March\) NHSN Newsletter](#)  [PDF - 1 MB]

Inside this issue – Patient Safety updates and Training Announcement, Healthcare Personnel Safety Module information, Quarterly Data Checks for NHSN Dialysis Event, and first quarter General NHSN information and more.

- **Registration for the Centers for Disease Control and Prevention 2022 National Healthcare Safety Network (NHSN) Virtual training event, being facilitated on March 22-24, is now open.**

# HAI Event Form

- **Clarification of new required COVID-19 question on HAI event form:**

The screenshot shows a section of the HAI Event Form with the following fields:

- Pain or tenderness
- Purulent drainage from affected area
- Other evidence of infection found on invasive procedure, gross anatomic exam, or histopathologic exam
- Secondary Bloodstream Infection \*: N - No ▾
- COVID-19 \*: N - No ▾** (highlighted with a red arrow)
- Died \*\*: N - No ▾
- Discharge Date: [ ] [23]
- Pathogens Identified \*: Y - Yes If Yes, specify below ->

Below the form, the text "Pathogens" is visible.

- **The COVID-19 field is a required field on the HAI event data collection forms for CLABSI, CAUTI, PedVAE, PNEU, VAE and SSI effective from 01/01/2022.**

# HAI Event Form

- **To reduce subjectivity, the lab finding of the most recent COVID-19 viral test prior to or on the date of event (HAI) should be used for the response.**
- **Answer COVID-19 as 'YES' if the patient's lab test confirmed COVID-19 prior to or on the date of event (HAI). Keep in mind that patients may undergo repeat testing post-treatment and may move from a 'confirmed' to 'negative' COVID-19 status.**
- **Answer COVID-19 as 'NO' if the most recent lab test prior to or on the date of event (HAI) is negative.**
- **We did not include in our definition a length of time for the patient to be considered 'confirmed'; however, we focus strictly on the current hospitalization and the response should be based on the lab test available within the current patient record**



# New Overflow Location Types

Location Name	CDC Location Code	Description
● Onsite Overflow Critical Care (ICU)	IN:ACUTE:CC:OF_ONSITE	Area previously used for non-patient care which has been repurposed to care for critically ill or injured patients
Onsite Overflow Ward	IN:ACUTE:WARD:OF_ONSITE	Area previously used for non-patient care which has been repurposed to care for non-critically ill or injured patients

**These location codes can be used by NHSN hospitals to map an appropriate patient care area, per the description above, to be used for HAI and AUR surveillance and reporting.**

**Note that these onsite overflow locations are intended to be used for an area of the hospital that was not previously used for patient care (e.g., cafeteria, storage room) but has been re-purposed to provide patient care.**

**Note: HAI and AUR reporting for the onsite overflow locations will be enabled in the NHSN application in mid-2022 and, at that time, facilities will be allowed to enter data for these location types beginning with events and summary records for January 2022 and forward.**

# 2022 Q1 Newsletter

- **Patient Safety Component Sections:**
  - AUR Module Updates
  - Analysis Updates: LOS/MEN Events
  - Analysis Updates: Useful Tips before Reporting Deadlines
  - Reminder! Data for CMS Quality Reporting Programs Due
    - May 16, 2022
- **Healthcare Personnel Safety Component**
  - Updates to Weekly COVID-19 Vaccination Modules
    - Removal of eligibility question on the COVID-19 vaccination data collection form
    - Data tracking worksheet-being built into the NHSN application.
      - Training Webinars are being planned for Spring 2022.
    - Guidance on Vendors
    - Guidance on medical contraindications after one dose of mRNA vaccine
    - Defects resolved

# 2022 Q1 Newsletter

- **Dialysis Component**
  - 2021 Quarter 4 deadline (payment year 2023) for CMS ESRD Quality Incentive program (QIP) is Thursday March 31, 2022, at 11:59 p.m. PT.
  - Quarterly Data Quality Checks for NHSN Dialysis Event (DE) Surveillance Reporting.
- **General NHSN Information**
  - Data Quality (DQ) Corner
  - CDA Corner

# NHSN Flu Vaccination Summary

- Report data for the reporting period specified in the NHSN protocol, which is **October 1 through March 31** for the denominator
- HCP influenza vaccination summary data reports must be entered into NHSN no later than **May 15** for each influenza season
- Monthly reporting in NHSN is not required; entering a **single influenza vaccination summary report** at the end of the reporting period for the influenza season will meet the minimum data requirements for NHSN participation
  - You can select **any month** within the current influenza season

# PROJECT FIRSTLINE IS FOR YOU



PROJECT  
**FIRSTLINE**

CDC's National Training Collaborative  
for Healthcare Infection Prevention & Control

# CDC Community Transmission Levels

## COVID Data Tracker

Maps, charts, and data provided by CDC, updates daily by 8 pm ET

[COVID-19 Home](#) >



Use CDC's [COVID-19 Community Levels](#) to determine the impact of COVID-19 on communities and take action. Community Transmission levels are provided for [healthcare facility use](#) only. Check back soon for COVID Data Tracker updates incorporating COVID-19 Community Levels.

### Daily Update for the United States

#### Cases

New Cases

31,246

Case Trends



Feb 2022 Mar 2022

Total Cases

79,555,007

#### Deaths

New Deaths

958

Death Trends



Feb 2022 Mar 2022

Total Deaths

968,839

#### Hospitalizations

New Admissions

2,010

Admission Trends



Feb 2022 Mar 2022

Current Hospitalizations

12,508

#### Vaccinations

% At Least 1 Dose

81.6%

People Age 5+



Total At Least 1 Dose

254,984,673

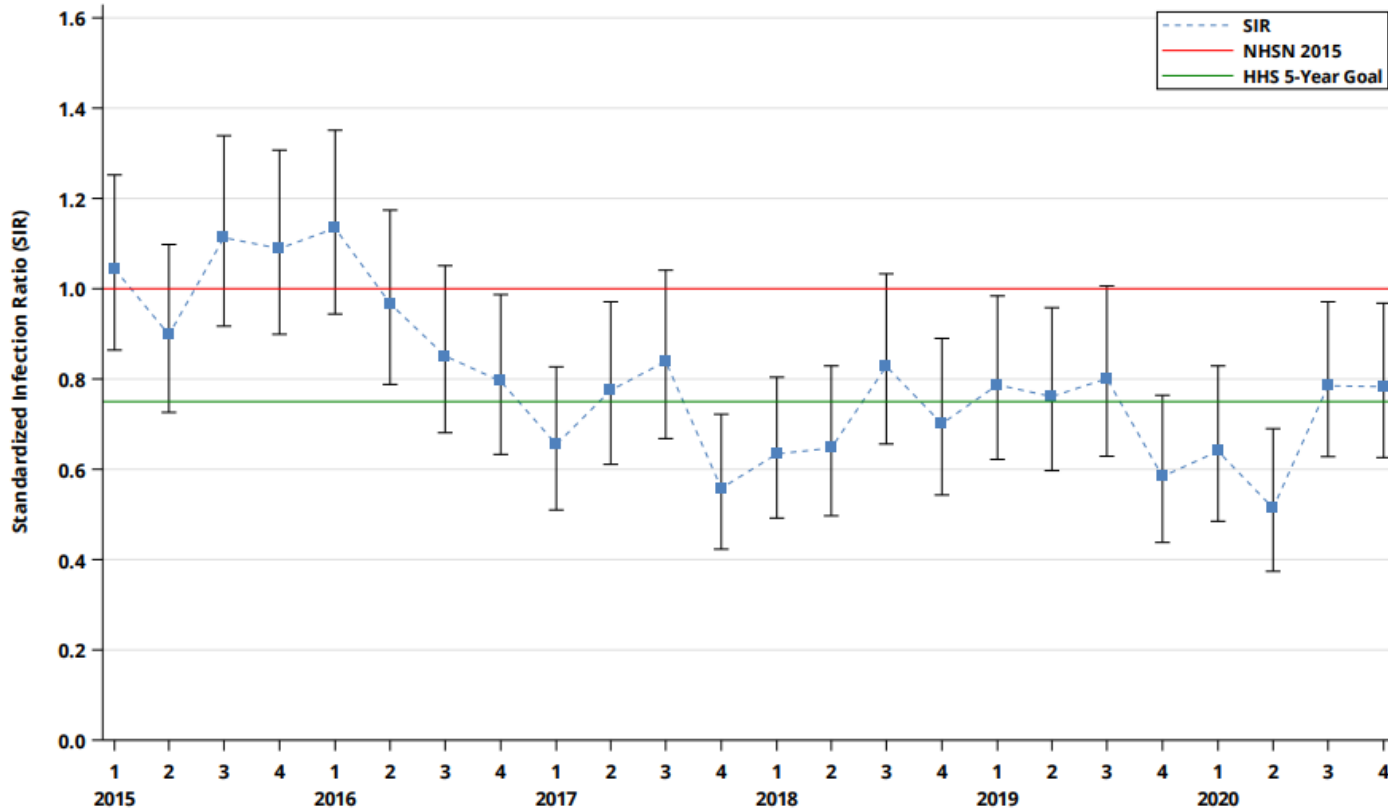
CDC | Data as of: March 20, 2022 2:01 PM ET. Posted: March 20, 2022 3:42 PM ET



**TN Published data**

# CAUTI in ACHs (ICU)

Figure 30: Standardized Infection Ratios (SIR) for Catheter-Associated Urinary Tract Infections (CAUTIs) for Adult and Pediatric Intensive Care Units (ICUs) by Quarter, Tennessee, 01/01/2015–12/31/2020 [Reference standard: National Healthcare Safety Network (NHSN), 2015]

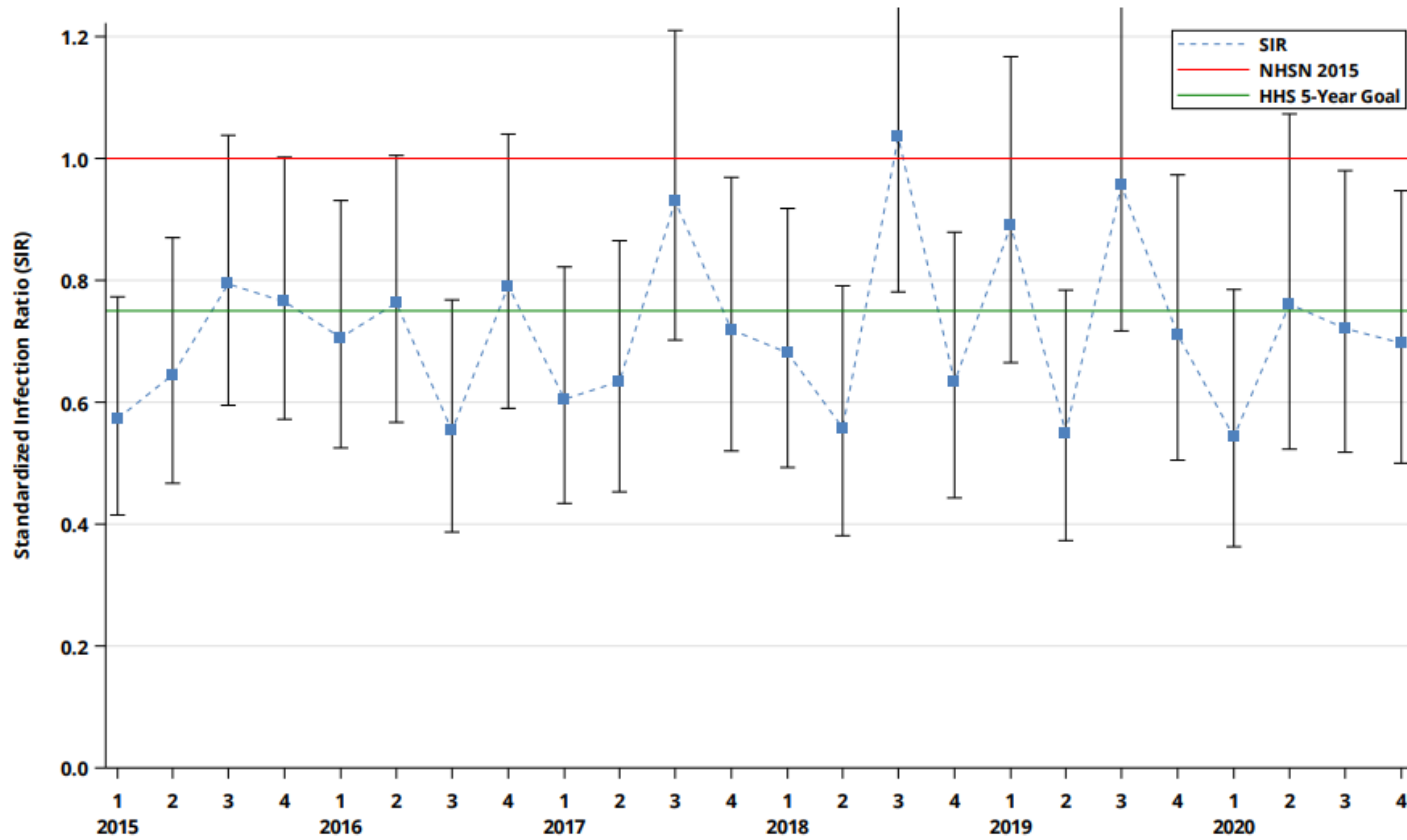


STATE	YEAR	No.	UC Days	No. of INFECTIONS					SIR AND 95% CONFIDENCE INTERVAL			DISTRIBUTION OF FACILITY-SPECIFIC SIRs									
				OBS	PRED	SIR	LOWER LIMIT	UPPER LIMIT	No. of FACS WITH ≥1 PRED INFECTION	No. of FACS WITH SIR SIG. <1.0		No. of FACS WITH SIR SIG. >1.0									
										N	%	N	%	10%	25%	50%	75%	90%			
Tennessee	2020	81	267,480	257	370.76	0.69	0.61	0.78	48	11	23%	1	2%	0.00	0.07	0.41	0.84	1.31			
	2019	82	257,201	262	356.36	0.74	0.65	0.83	43	6	14%	0	0%	0.00	0.00	0.48	0.83	1.10			



# CAUTI in ACHs (Wards)

Figure 36: Standardized Infection Ratios (SIR) for Catheter-Associated Urinary Tract Infections (CAUTIs) for Adult and Pediatric Medical, Surgical, and Medical/Surgical Wards by Quarter, Tennessee, 01/01/2015–12/31/2020 [Reference standard: National Healthcare Safety Network (NHSN), 2015]



STATE	YEAR	No.	UC Days	No. of INFECTIONS		SIR AND 95% CONFIDENCE INTERVAL			DISTRIBUTION OF FACILITY-SPECIFIC SIRs									
				OBS	PRED	SIR	LOWER LIMIT	UPPER LIMIT	No. of FACS WITH ≥1 PRED INFECTION		No. of FACS WITH SIR <1.0		No. of FACS WITH SIR >1.0		10%	25%	50%	75%
Tennessee	2020	96	209,605	132	194.47	0.68	0.57	0.80	41	3	7%	1	2%	0.00	0.00	0.54	0.86	1.36
	2019	98	227,071	163	208.93	0.78	0.67	0.91	43	3	7%	3	7%	0.00	0.41	0.78	1.08	1.77

# Next NHSN User Call

- **Monday, April 18<sup>th</sup>, 2022**
  - **10am CT**
- **NHSN Related**
  - [Vicky.Reed@tn.gov](mailto:Vicky.Reed@tn.gov)
- **Infection Prevention**
  - [HAI.Health@tn.gov](mailto:HAI.Health@tn.gov)
- **General / Other**
  - [Christopher.D.Wilson@tn.gov](mailto:Christopher.D.Wilson@tn.gov)