



DEPARTMENT OF SAFETY

BRIDGING DOCUMENT

REVISED: 2/20/2026



This packet contains a comprehensive set of spaces found in typical **DOS** offices; some areas noted may not be included in the agency-approved block plan that accompanies these drawings. This packet also contains specific operational and programmatic needs of the State of Tennessee that are above and beyond the minimum code requirements.

The building owner and architect of record are responsible for confirming that the Construction Documents meet all applicable code and ADA requirements

If a building owner is providing a co-locate proposal, the agencies who will occupy the space will need to be separated with a demising wall. If shared amenities are included in the design, such as employee restrooms and break room, then secure access into each agency's space must be maintained. Often this can be accomplished with a secure shared corridor.



INDEX OF STANDARD TYPICAL DRAWINGS	
DRAWING	SHEET
SAMPLE PLAN (SPATIAL ZONING)	0.0 & 0.0A
EXTERIOR	0.1
WALL & CEILING SPECIFICATIONS	0.2
WALL CONSTRUCTION	0.3 & 0.3A
ACCESS CONTROL & SOUND MASKING	0.4 & 0.4A
FLOORING TYPE	0.5 & 0.5A
POWER & DATA LOCATIONS	0.6
POWER & DATA LOCATIONS – PER ROOM	0.6A
POWER & DATA LOCATIONS – PER ROOM	0.6B
POWER & DATA LOCATIONS – PER ROOM	0.6C

DETAIL #	DESCRIPTION	PAGE
A	SYSTEM FURNITURE ELECTRICAL	1.0
B	RECEPTION WINDOW DETAIL	1.1
C	SELF-SERVICE KIOSK DETAIL	1.2
D	PUBLIC RESTROOM & DRINKING FOUNTAIN HEIGHT	1.3
E	ELEVATION OF OFFICE	1.4
F	DOOR STRIPING FILM	1.5

INDEX OF STANDARD TYPICAL DRAWINGS	
DRAWING	SHEET
TELECOMMUNICATION	1.20
DOOR ELEVATION WITH CARD READER	1.21
DOOR SCHEDULE: FLOOR PLAN	1.22
DOOR SCHEDULE	1.23 A
DOOR SCHEDULE: FLOOR PLAN - THP	1.23
DOOR SCHEDULE	1.23 A
RESTROOM ACCESSORY INFO	1.24
ENTRANCE DOOR SIGNAGE	1.25
EXERIOR SIGNAGE	1.26
FLOORING SPECIFICATION	1.27

NOTE: These drawings are **not to scale**, including furniture prototypes. They have been developed based on programming information and requirements of individual agencies for the State of Tennessee. The Architect of Record shall utilize this information to develop complete construction documents, in compliance with applicable codes and regulations. **Please refer to lease for additional requirements.**

SAMPLE PLAN (SPATIAL ZONING)

ZONE 1:
CLIENT

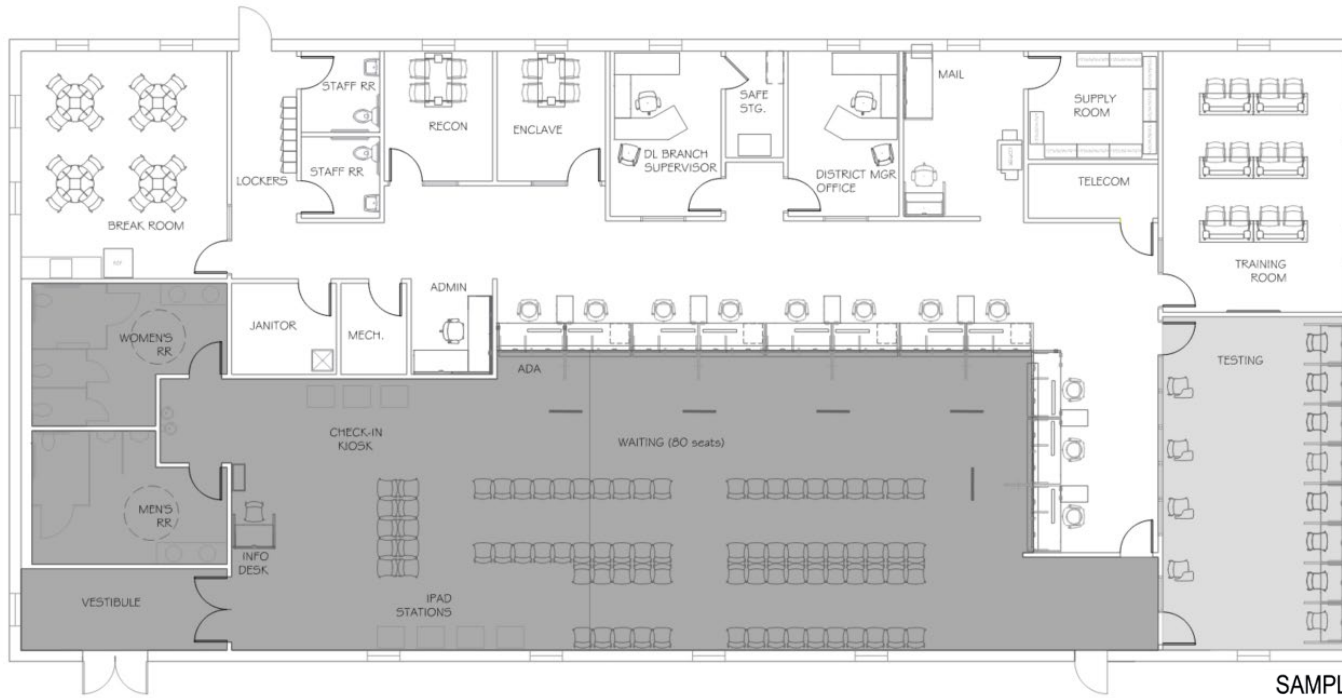
Client Access. Security measures are required between the client zone and intermediate zone. client zone requires immediate access to customer parking lot, and should include waiting room, client restroom(s), drinking fountain(s), Self-Service Kiosk(s), and other public amenities.

ZONE 2:
INTERMEDIATE

Escorted Access. This zone is accessible to staff and clients. Staff members escort the clients in and out of these areas. This zone includes Hearing office (if applicable) and testing rooms.

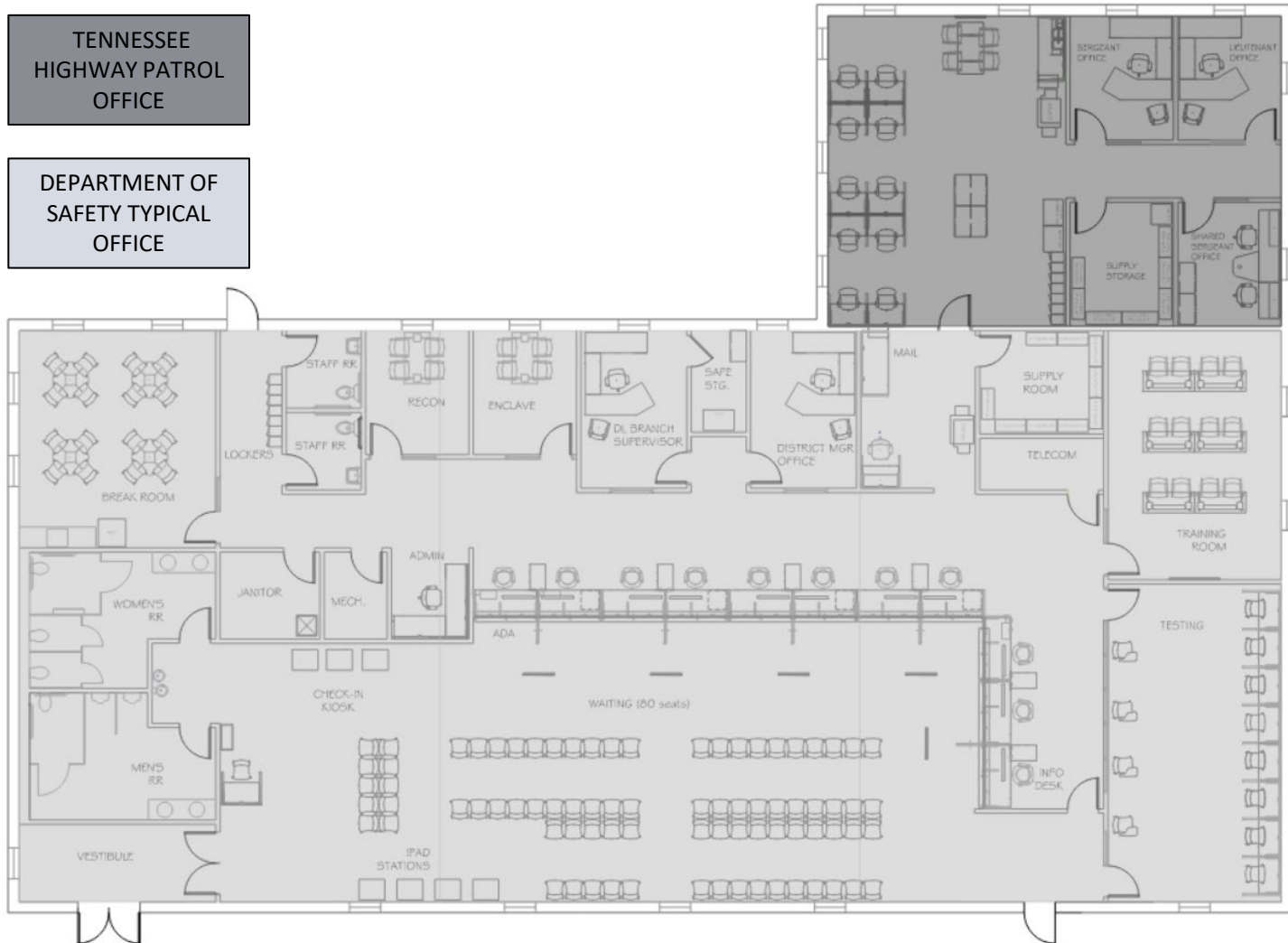
ZONE 3:
STAFF

Staff Only. The staff zone consists of spaces accessible by employees only, including workstations, offices, storage rooms, breakroom, copy/mail area, enclave(s), staff restrooms, Training rooms and other utility rooms. This zone requires separate employee-only entrance(s) from the secured staff parking area.



SAMPLE PLAN ONLY.
NOT FOR CONSTRUCTION.

SAMPLE PLAN (SPATIAL ZONING) – Tennessee Highway Patrol



EXTERIOR REQUIREMENTS

Exterior

- Exterior walls should be masonry or brick veneer construction and should not include typical “storefront” window-wall assemblies.
- Exterior windows to be at least 5’ above finish floor (AFF) to prevent a straight look into the interior staff spaces; no full height unless stated otherwise on a per-project basis; Otherwise, clerestory windows are ideal. Tinting is allowed in existing locations. Provide window treatment/blinds for all exterior windows, preferably metal blinds.
- Building entrances to be covered
- Security Cameras: Provide data lines with double junction box mounting and conduit to the Telecommunications Room for the following camera locations; adjacent to all exterior entry doors, the Waiting Room and other locations, based on the lease space required, within the staff areas based on the final space layout.
- Provide exterior lighting at all building entry/exit doors. Exterior building mounted.
- Lessor to provide decal signage on front glass door, graphics per state standard
- Lessor to provide exterior building signage per state standard
- Exterior to include fenced staff and fleet parking lot with motorized gate (agency expense)
- Exterior landscaping to have minimal trees and bushes
- If fleet vehicle parking, then provide 8’ chain link fence and card reader access
- Fence: 8' height, black, coated, Class 2B - 8-gauge finish (9-gauge core) chain link fabric, 2" chain link mesh, fence.
- 2-1/2" O.D. 20-weight line posts, 3" O.D. 20-weight end posts, and 3" O.D. 20-weight corner posts. Line posts to be on 10' centers.
- 1-5/8" diameter, 20-weight, top rail. 6-gauge coated bottom tension wire.
- Vehicle Gates: Cantilever slide gates, “TBD size of” opening, 2-1/2" top and bottom horizontal, 2" uprights, 1-5/8" diagonal bracing, 4" O.D. gate posts, nylon rollers, with receiver latch.
- Passage Gate: single swing gates, 4' opening X 8' height, 1-5/8" frame diameter, 20-weight frame, black, coated, Class 2B - 8-gauge finish (9-gauge core) chain link fabric, 3" chain link mesh, 3" O.D. gate posts.
- Gooseneck Pedestal: To be installed and place on approach from gate at an appropriate distance from gate for installation of card reader or keypad to operate opener.
- Electrical: As required by gate openers(provided by owner), this would include line voltage and low voltage pathways from the facility to the vehicle and passage gates.
- Slab: Slab size and location to be determined by gate openers.

WALL & CEILING SPECIFICATIONS

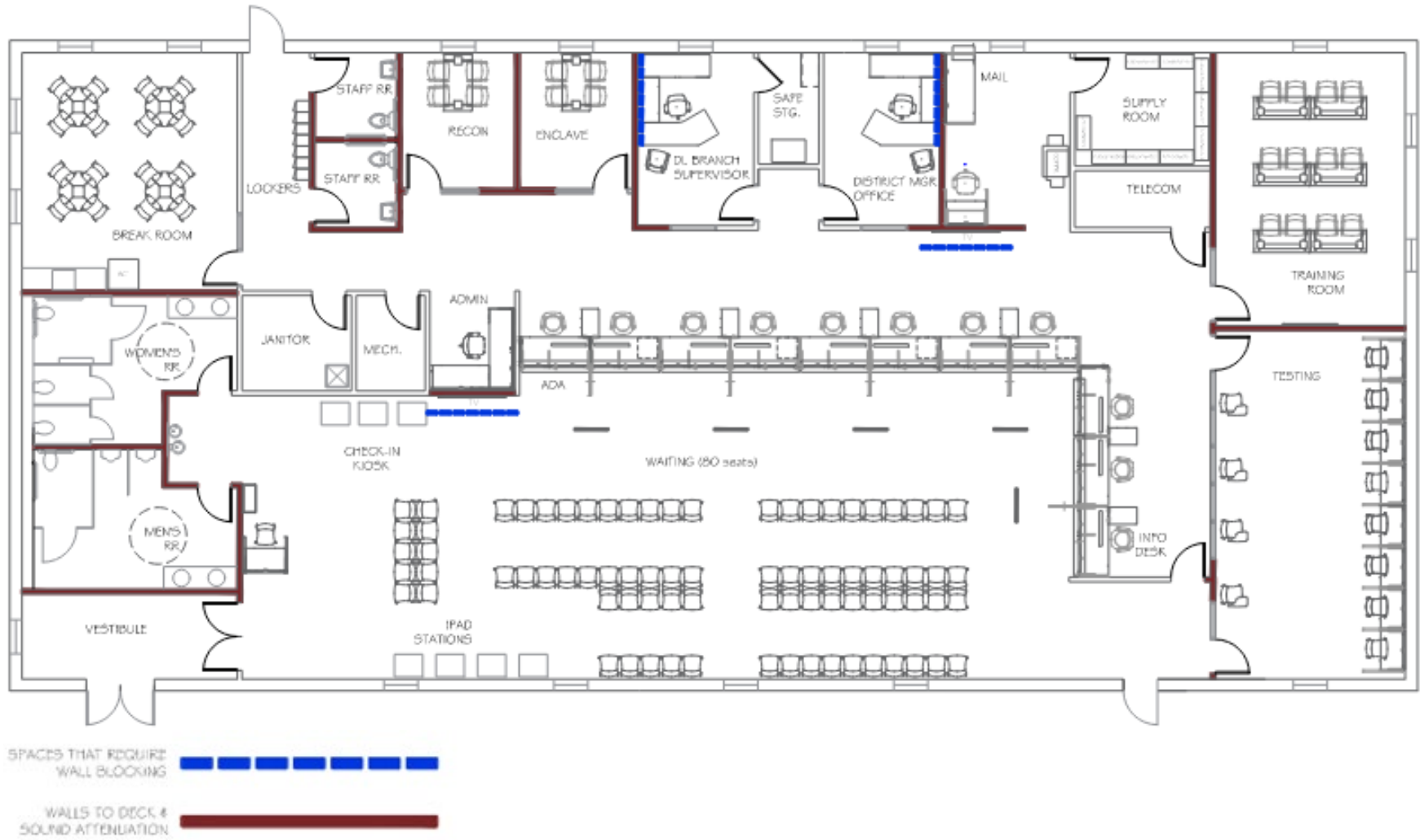
Common Walls

- Common walls shall include slab-to-slab gypsum wallboard on the public side of all demising walls, corridors, stairwells, and other walls not interior to the Tenant space. All common walls shall be taped, blocked, finished, and sanded. Landlord will install sound attenuation insulation on Tenant side of Common Walls and demising walls prior to Tenant finishes being installed or applied.
- Landlord shall furnish and install entry and exit doors in the Common walls from the common areas into the Leased Premises.

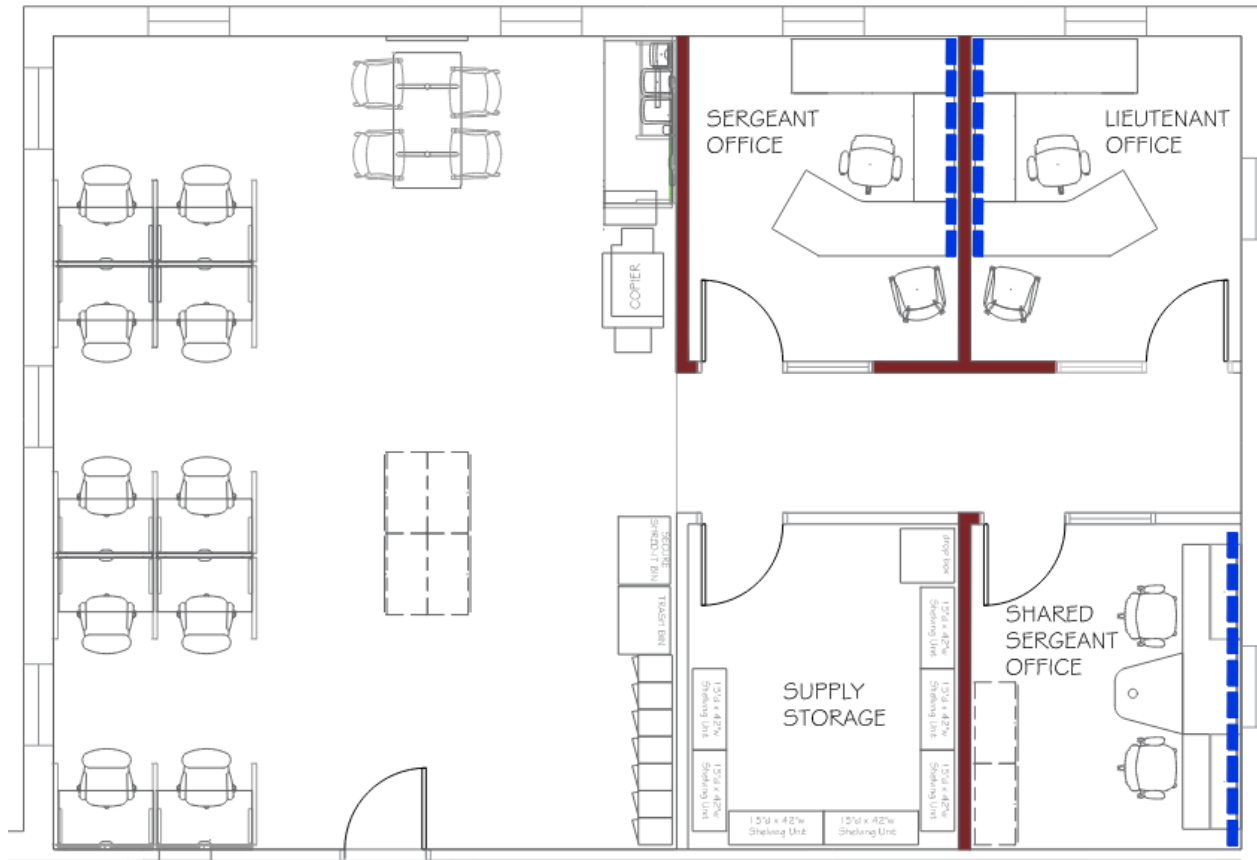
Partitions

- All existing perimeter sill walls and core walls throughout space shall be freshly painted in an eggshell or satin paint finish.
- All new partitions shall be constructed with 5/8" drywall and 3 5/8" metal studs with sound attenuation blankets installed per manufacturers recommendations inside the partition wall. Additional sound attenuation blankets shall be installed on ceiling tile.
- Partitions around to include but not limited to all conference rooms, training rooms, break rooms, , and restrooms, shall built to deck. Sound attenuation blankets shall be installed per manufacturers recommendation inside the partition wall, seal all penetrations within partition walls including power/data boxes and at the connection of the partition to the deck.
- Landlord shall install sound attenuation blankets on the ceiling tiles to include but not limited to, meeting rooms(enclaves), and offices.
- Connections from partition to mullion will require an acoustically sealed connection.
- Finish partitions completely to floor.

WALL CONSTRUCTION



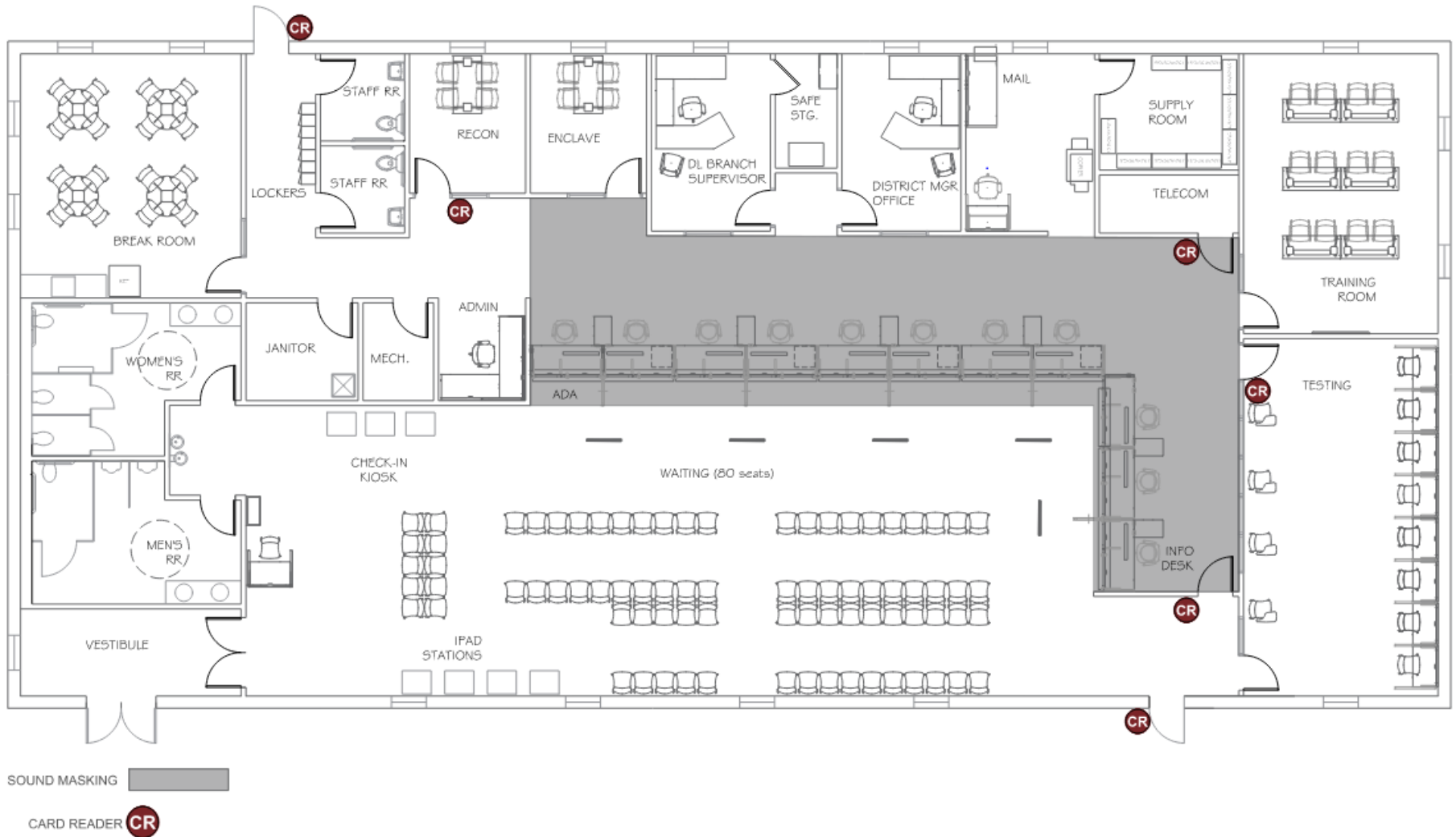
WALL CONSTRUCTION – THP SUITE



SPACES THAT REQUIRE WALL BLOCKING 

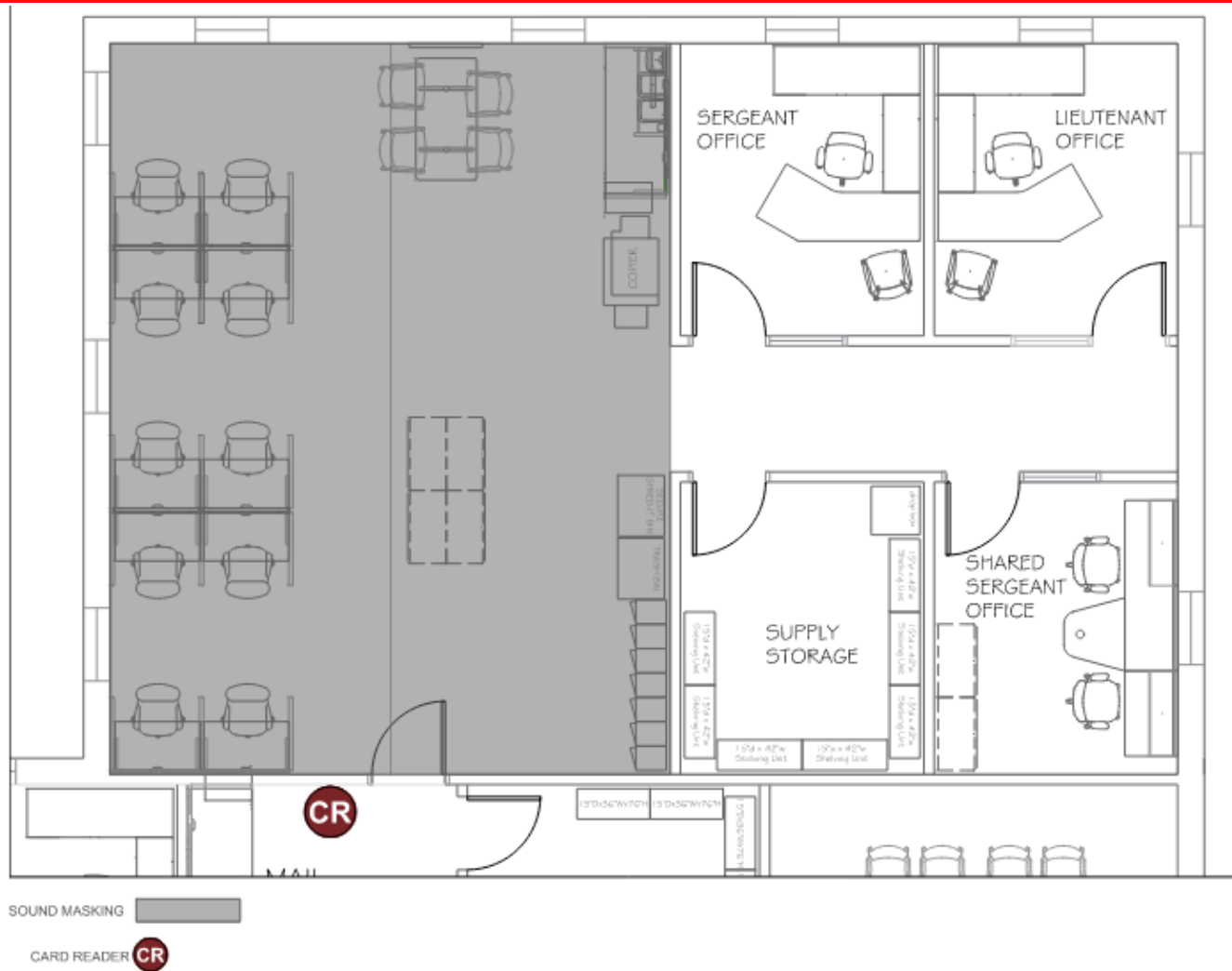
WALLS TO DECK & SOUND ATTENUATION 

ACCESS CONTROL AND SOUND MASKING



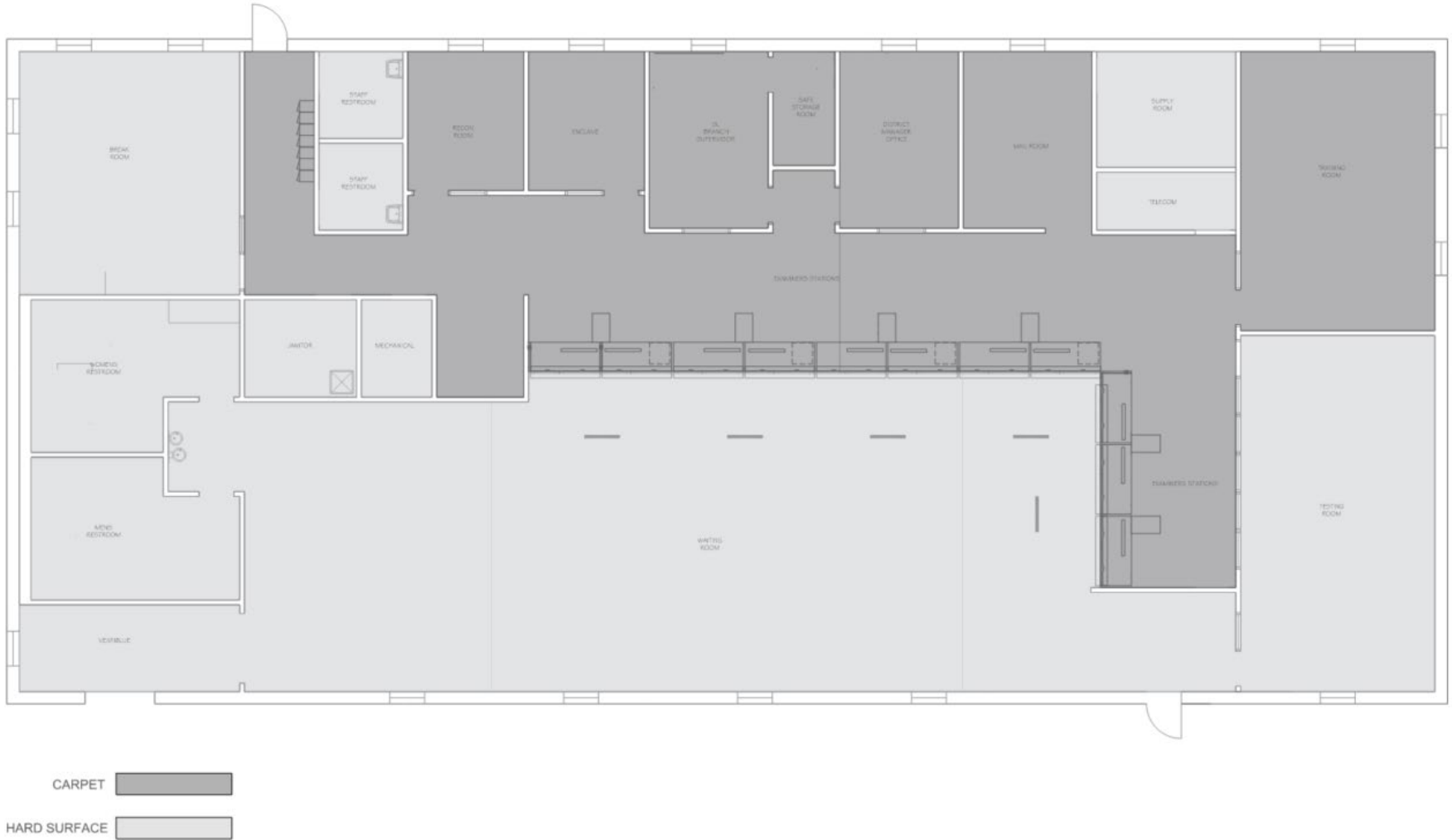
Sound masking will be required in the Zone 3 open office area. Low-voltage sound masking equipment will be provided and installed by the Tenant's vendor. Lessor to provide power for the sound masking control module in the telecom room.

ACCESS CONTROL AND SOUND MASKING – THP SUITE

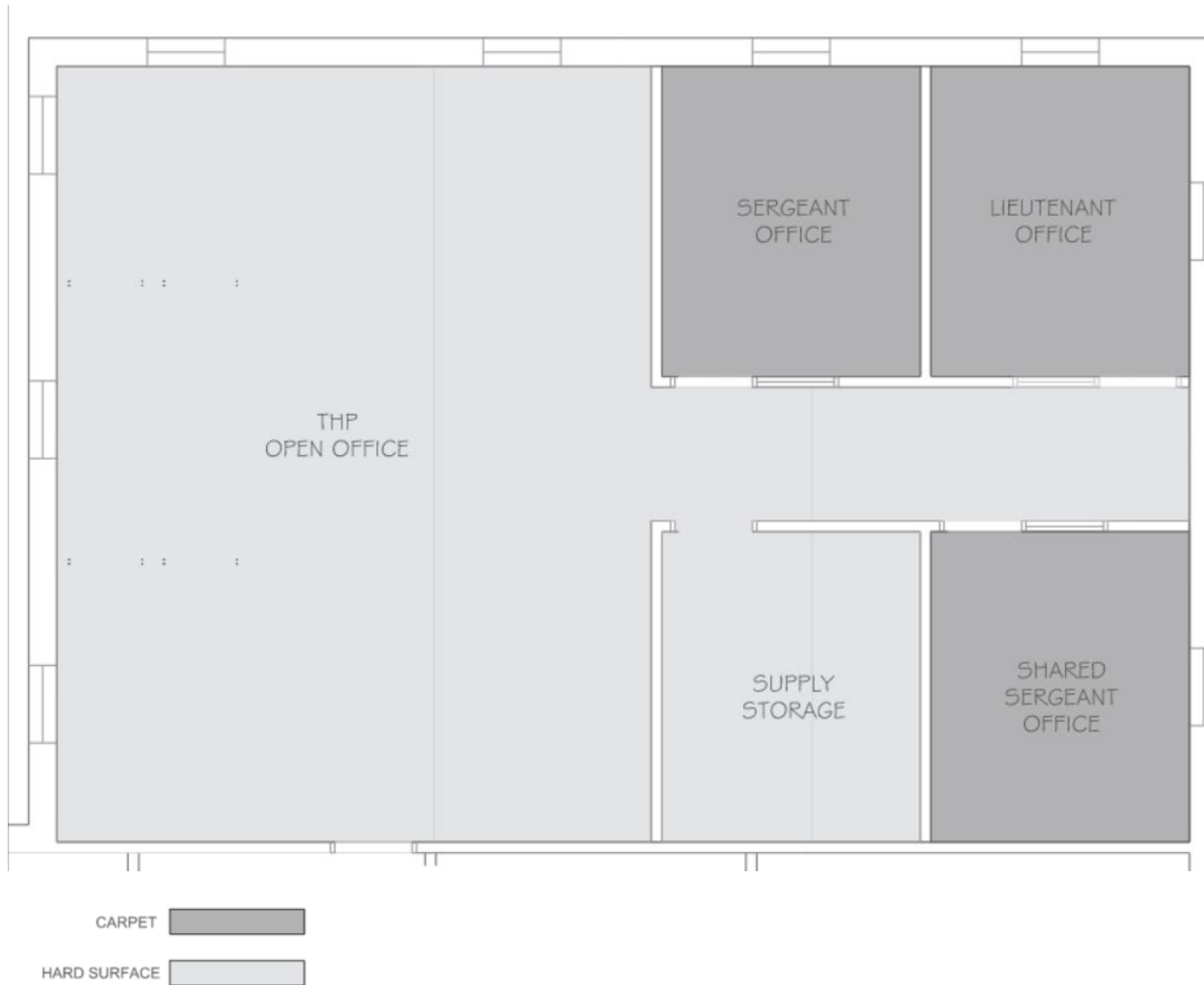


Sound masking will be required in the Zone 3 open office area. Low-voltage sound masking equipment will be provided and installed by the Tenant's vendor. Lessor to provide power for the sound masking control module in the telecom room.

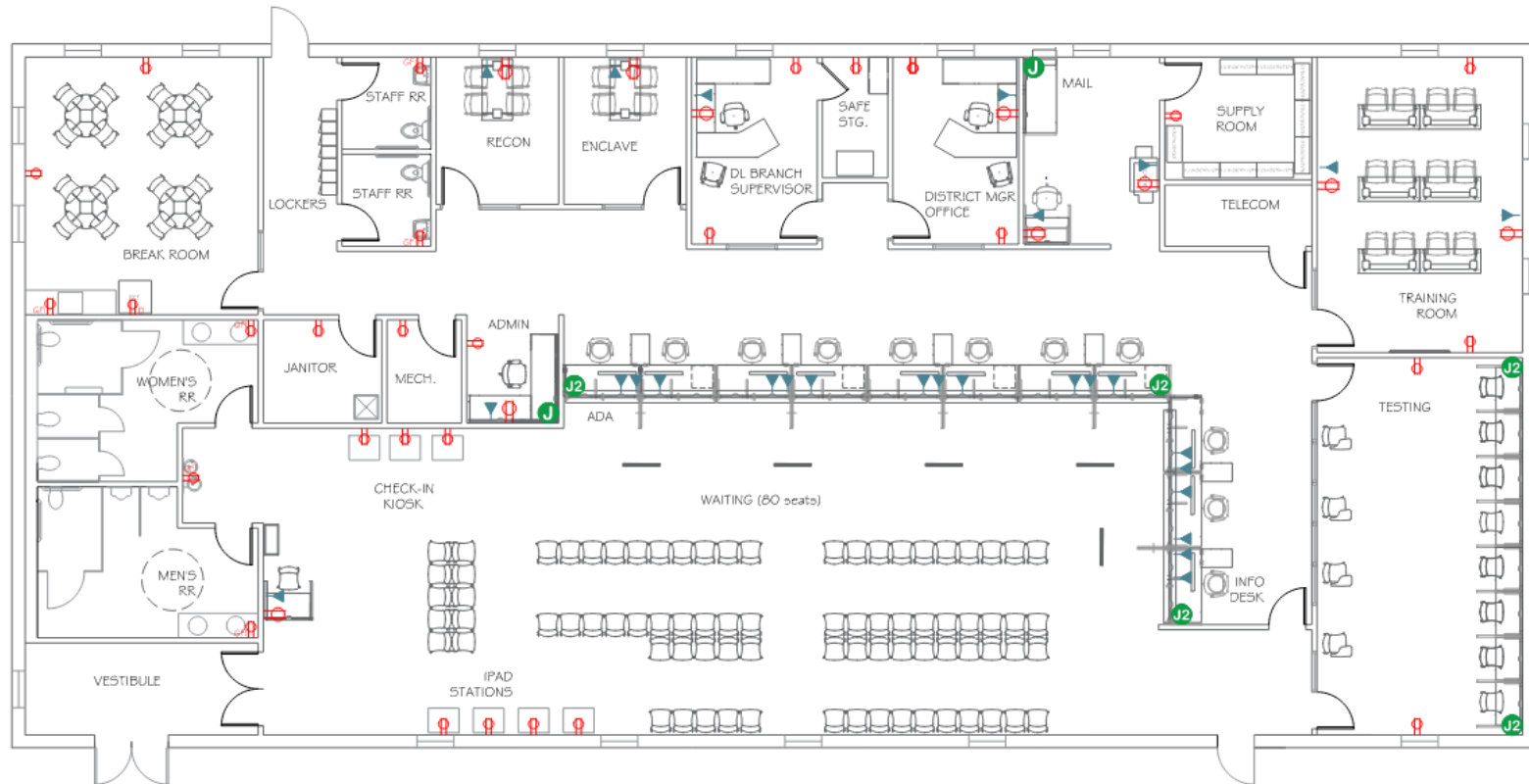
FLOORING TYPE



FLOORING TYPE – THP SUITE



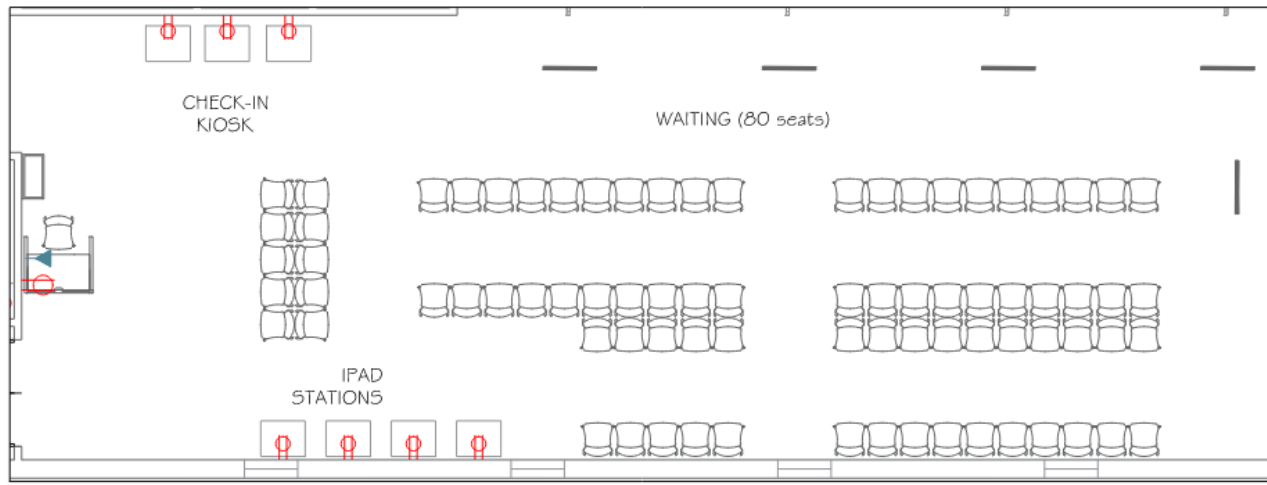
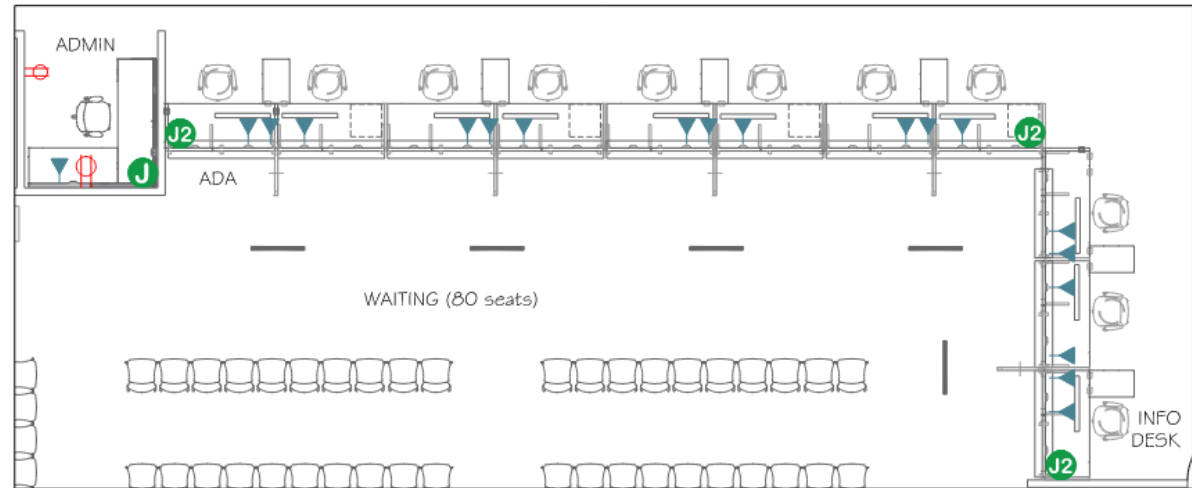
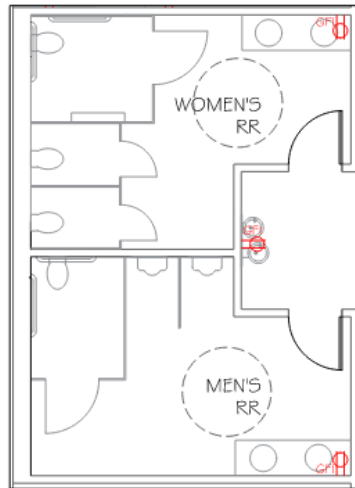
POWER & DATA LOCATIONS



-  ELECTRICAL DUPLEX CEILING OUTLET
-  DUPLEX OUTLET, 110V GFI
-  DEDICATED 20 AMP DUPLEX OUTLET
-  ELECTRICAL DUPLEX OUTLET
-  PHONE/DATA OUTLET
-  JUNCTION BOX; (1) 20 AMP DEDICATED CIRCUIT WITH 10'-0" WHIPS
-  JUNCTION BOX; (2) 20 AMP DEDICATED CIRCUIT WITH 10'-0" WHIPS

Required duplex outlets and data per agency requirements are marked on plan. Any additional duplex outlets are to be determined by the architect, per code requirements. Lessor is to provide wall blocking for agency provided wall-mounted television and ceiling mounted duplex outlets and data for audio and visual equipment, provided by the agency.

POWER & DATA LOCATIONS – PER ROOM

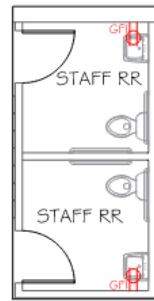


Required duplex outlets and data per agency requirements are marked on plan. Any additional duplex outlets are to be determined by the architect, per code requirements. Lessor is to provide wall blocking for agency provided wall-mounted television and ceiling mounted duplex outlets and data for audio and visual equipment, provided by the agency.

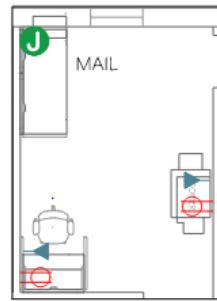
POWER & DATA LOCATIONS – PER ROOM



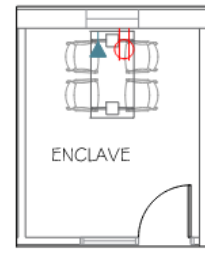
SUPPLY ROOM
NOT TO SCALE



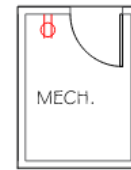
STAFF RR
STAFF RR
NOT TO SCALE



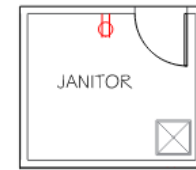
MAIL
MAIL AREA
NOT TO SCALE



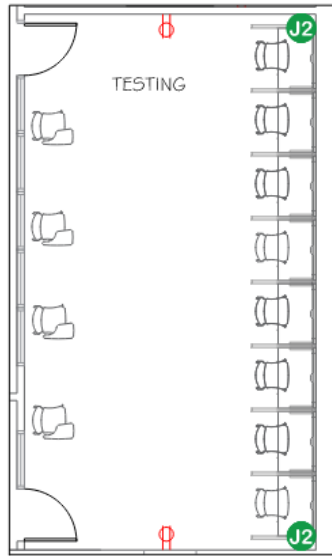
ENCLAVE
ENCLAVES / RECON
NOT TO SCALE



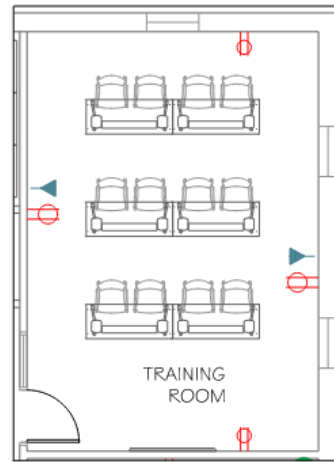
MECH.
MECHANICAL
NOT TO SCALE



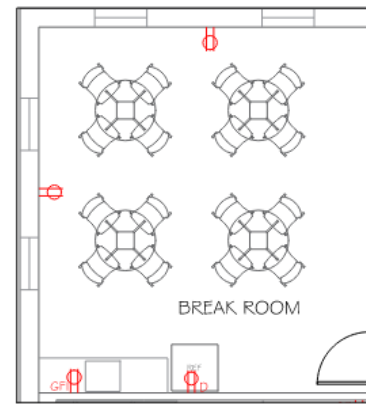
JANITOR
JANITOR
NOT TO SCALE



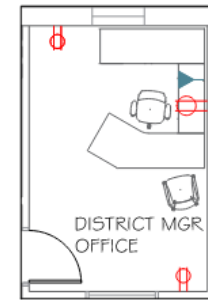
TESTING
TESTING ROOM
NOT TO SCALE



TRAINING ROOM
TRAINING ROOM
NOT TO SCALE

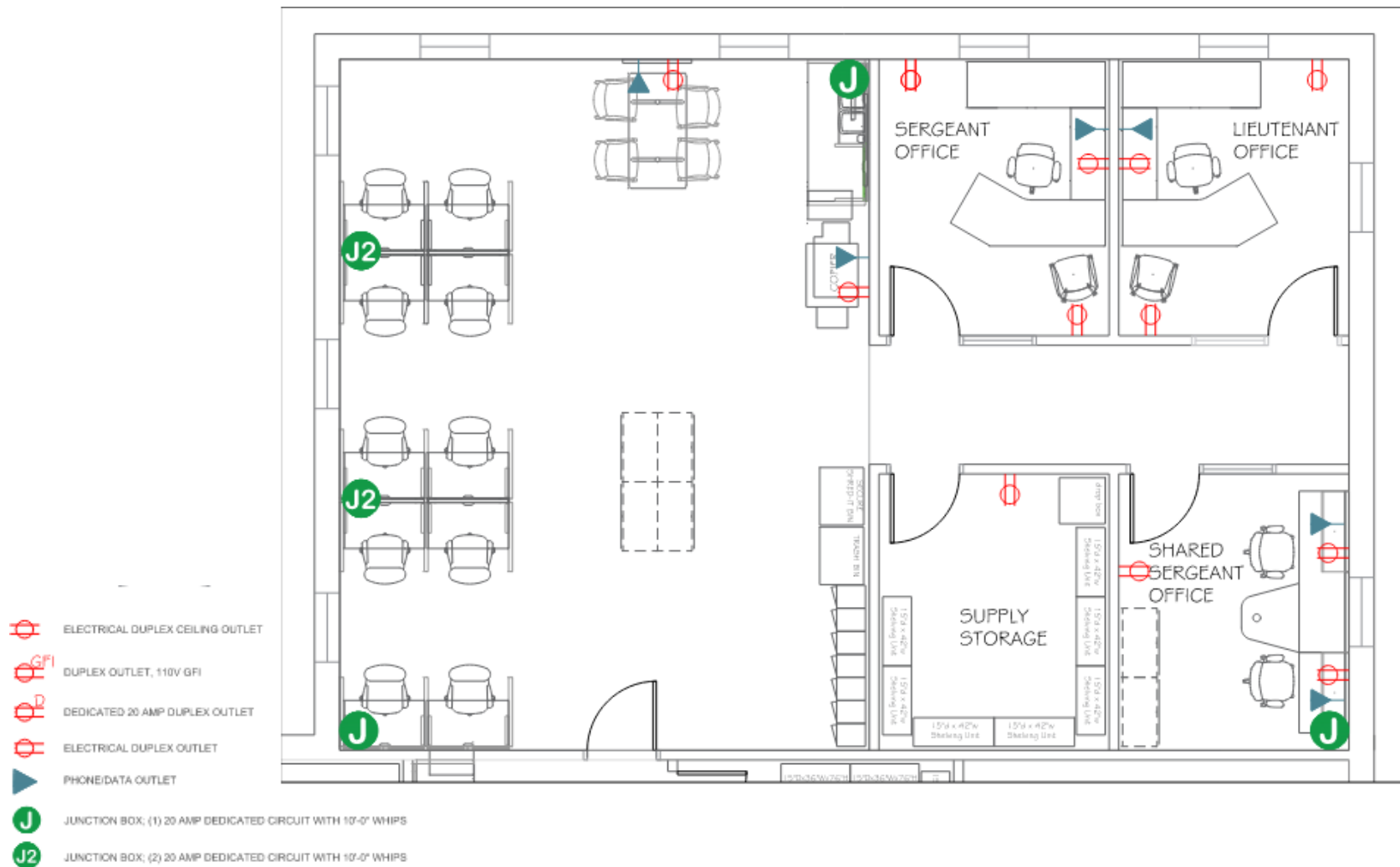


BREAK ROOM
BREAK ROOM
NOT TO SCALE



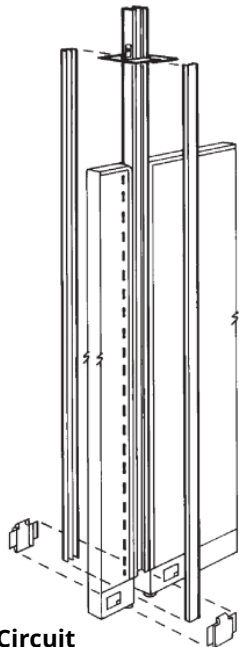
DISTRICT MGR OFFICE
PRIVATE OFFICES
NOT TO SCALE

POWER & DATA – THP SUITE



SYSTEMS FURNITURE ELECTRICAL REQUIREMENTS

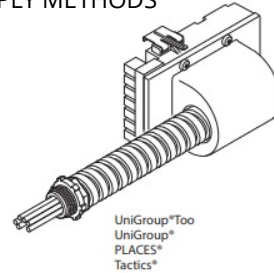
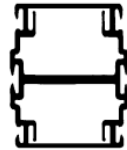
Vertical pole for routing power harness and communication cables from ceiling.



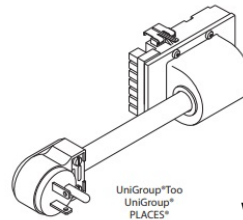
3-Circuit

- As many as three separate 20-Amp rated circuits from 1 power feed module.
- 8-Wire system enclosed in one power distribution assembly:
 - 3 hot wires
 - 3 neutral wires
 - 1 common ground wire
 - 1 isolated ground wire
- Separate neutrals, one dedicated to each circuit, are capable of carrying computer-quality power.

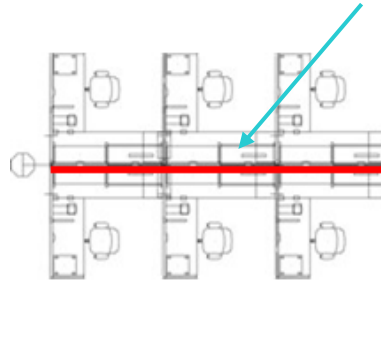
DETAIL A POWER SUPPLY METHODS



Flexible metal conduit construction for routing power to panels and tables.



Workstation spines consists of power, the junction boxes must be within 1 foot from a whip.



OVERALL:

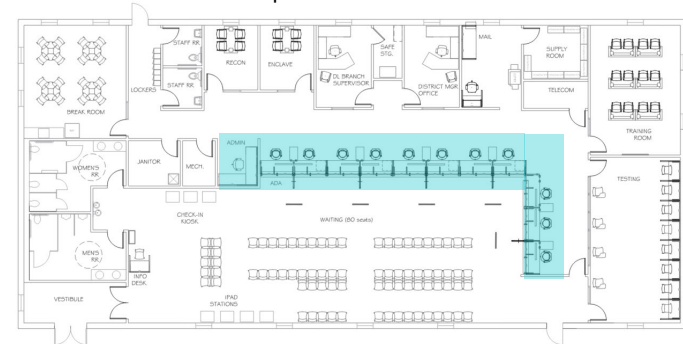
3-Circuit/Separate Neutrals

This option provides three circuits, each with its own neutral.

- Aligns with the 3-phase national power grid and most North American buildings.
- Is compatible with the following building power configurations:
 - 3 phase (208Y/120V)
 - Three wire single phase (120/240V)
 - Single phase (120V)

Needed: Junction box 1 circuit to power 2 workstations
Junction box 2 circuits to power 4 workstations

Note: If ceiling is a hard surface, then base feeds must be supplied for power.
Power poles can be adjusted on site anywhere on power panels.

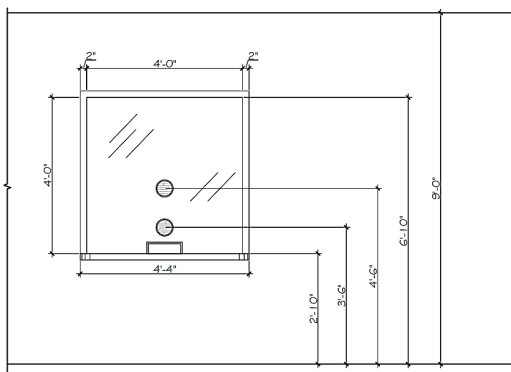


Building needs to be equipped with ceiling junction boxes for all systems furniture unless base feeds are specifically noted. All electrical outlets and rough-ins for data need to be provided by building owner.

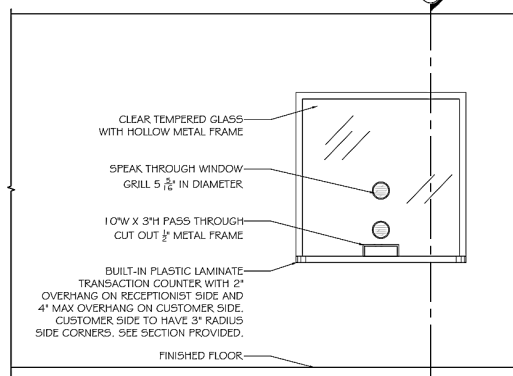
RECEPTION WINDOW

DETAIL B

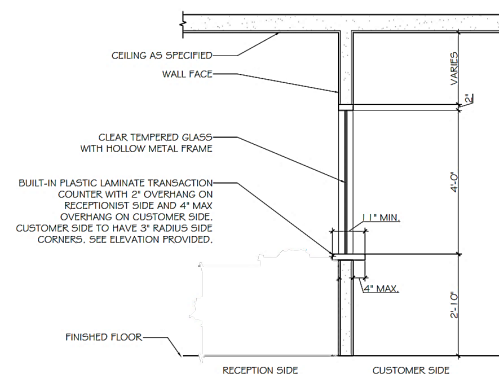
RECEPTION WINDOW DIMENSIONS



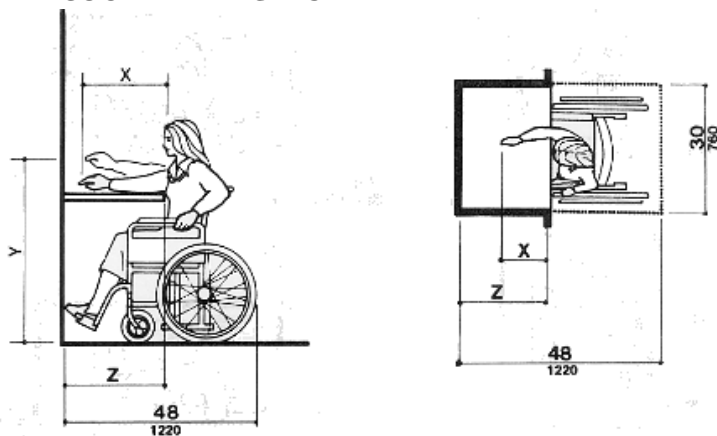
RECEPTION WINDOW ELEVATION



RECEPTION WINDOW SECTION

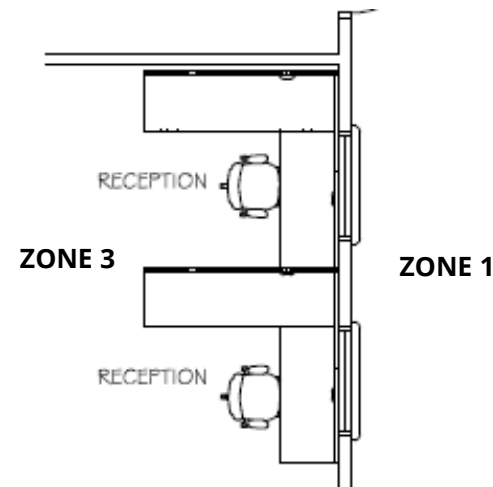


ADA COUNTER HEIGHTS



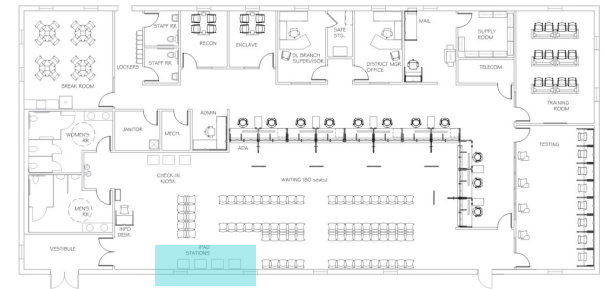
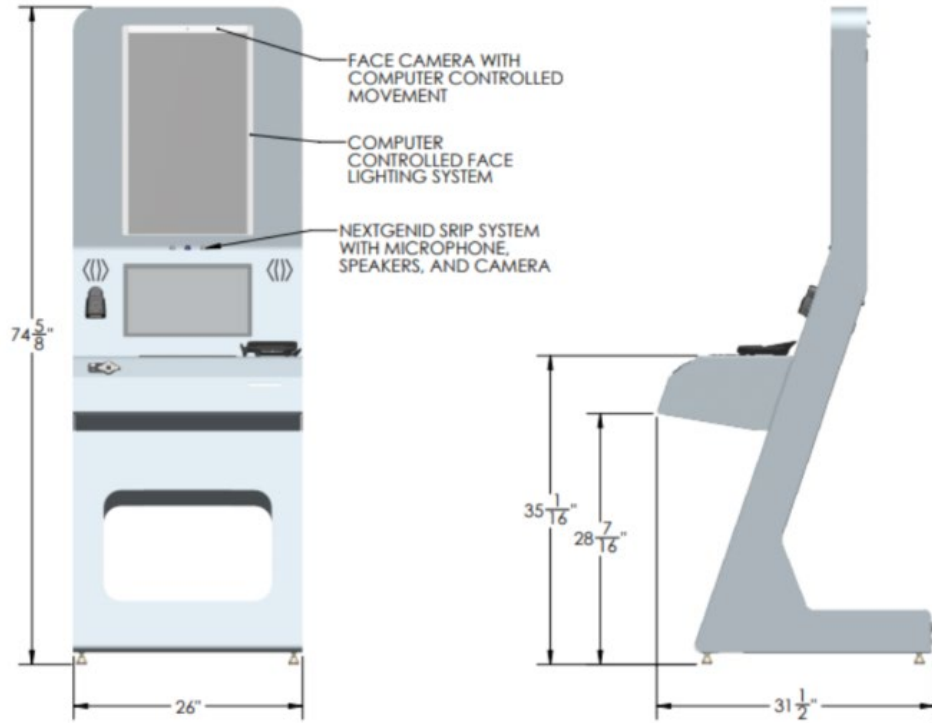
NOTE: x shall be ≤ 25 in (635 mm); z shall be $\geq x$. When $x < 20$ in (510 mm), then y shall be 48 in (1220 mm) maximum. When x is 20 to 25 in (510 to 635 mm), then y shall be 44 in (1120 mm) maximum.

RECEPTION WINDOW FLOOR PLAN



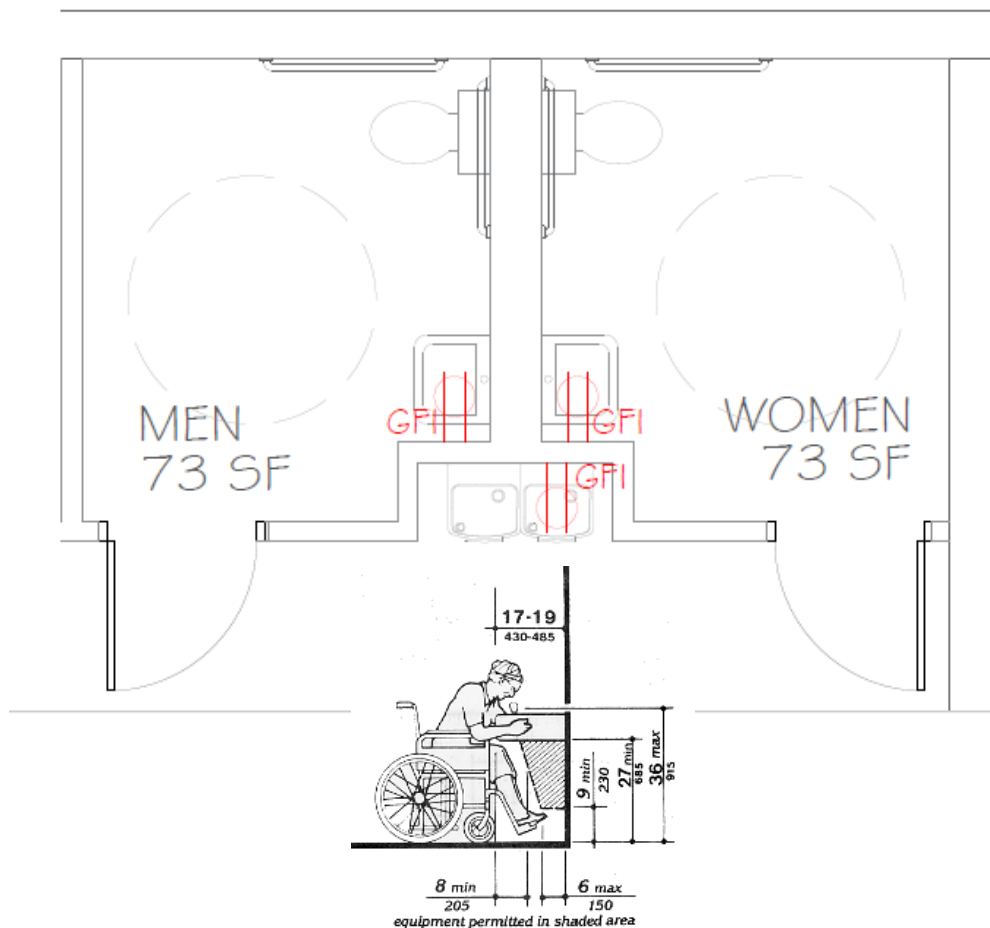
SELF SERVICE KIOSK

DETAIL C SELF SERVICE KIOSK SPACE REQUIREMENT

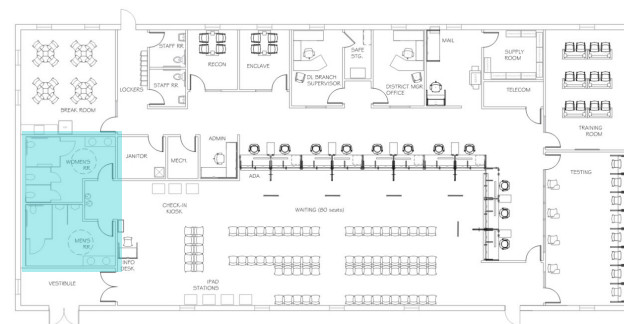


The quantity of kiosks will be determined by the agency and IDPM. Each Kiosk will need its own power outlet and data port.

PUBLIC RESTROOMS & DRINKING FOUNTAIN

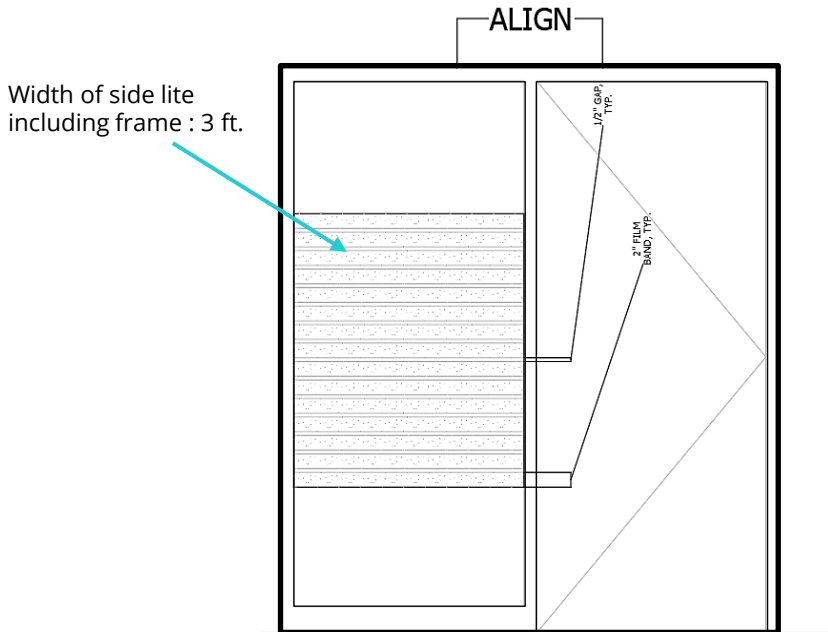


DETAIL D DRINKING FOUNTAIN HEIGHT
www.ada.gov



SIDELITE DOOR STRIPING FILM

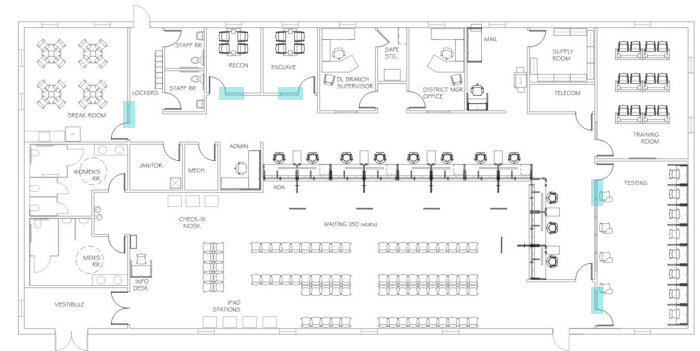
DETAIL H DOOR STRIPING FILM



7'-0" DOORS - START FILM @ 2'-0" AFF. END FILM @ 5'-6" OR NEXT FULL BAND.

8'-0" DOORS - START FILM @ 2'-0" AFF. END FILM @ 6'-2" OR NEXT FULL BAND.

9'-0" DOORS - START FILM @ 2'-6" AFF. END FILM @ 6'-10" OR NEXT FULL BAND.



TELECOM ROOMS

UPDATED: 03/2024





Shall provide a minimum of 2" conduits (x3) to extend to the property line. The State Service Provider needs to be consulted as they have the legal right to determine where the conduits terminate. Coordinate with state service provider and STS Cabling team.

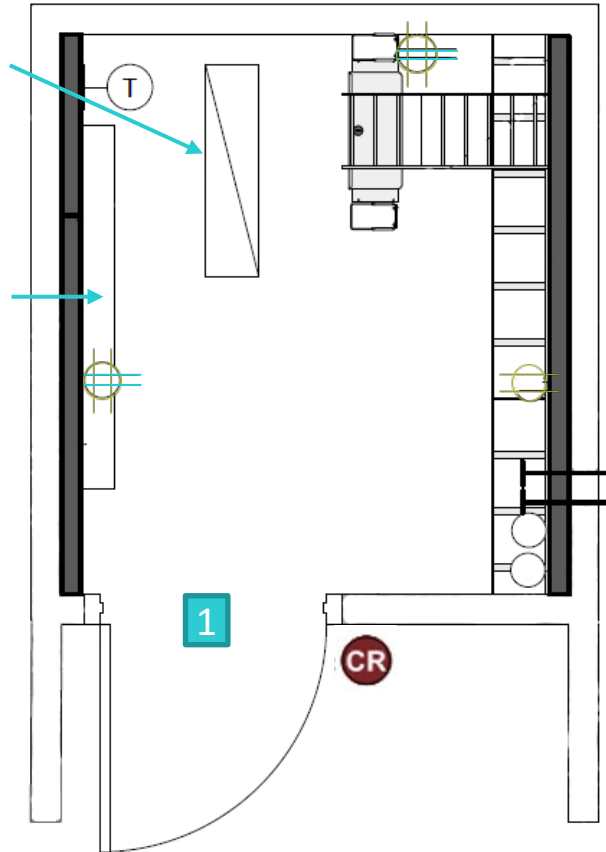
Lighting should be a minimum of 50-foot candles on both sides of the racks.

Stand alone dedicated HVAC Unit appropriately sized according to square footage and heat load. Consult with STS Cabling Department for any questions on size and location. HVAC unit to be mounted on the wall at 8'-6" AFF. Thermostat easily accessible within the room, typically by the door. Unit needs to be operating 24 hours a day, 365 days/ year with no heat.

NOTE: Air from the HVAC unit must not blow directly at the equipment.

If fire system sprinklers are provided by Landlords in the telecom room diverters are required to deflect water from damaging equipment.

-  Card reader
-  Thermostat
-  Quad outlet
-  Dual outlet



ROOM OVERALL:

- Telecom should be centrally located in secure staff zone
- Must be temperature controlled, cooling only (see note on HVAC)
- Room should be within 200 feet of systems furniture or IT termination point(s)

Single story buildings

- Ceiling should be open to deck except where approved by STS and DGS
- Spaces should be designed with adequate pathways or openings through walls and other obstructions into accessible ceiling space.

Multi-story buildings

- At least one telecom room per floor
- Must be stacked with the walls extending to the deck
- State will provide necessary plywood backboard
- Provide conduit infrastructure for voice/data and back-boxes
- 1" conduit stubbed up into accessible area in the open access ceiling
- Place outlets according to build out plans, Include pull string and a bushing.

FLOORING TYPE: FINISHED CONCRETE

DOORS: Must be minimum of 36" wide and open out. Must remain locked at all times.

	TYPE	HARDWARE
1	Solid door with card reader	No interior thumb lock Door closer needed

WINDOW : No windows

ELECTRICAL:

- Provide (2) dedicated 120v, 20-amp quad outlets. Coordinate location of quads with rack location(s).
- Provide (2) convenience outlets, one on each wall
- Provide 1 #6AWG ground wire from the main electrical panel with 3' of slack coiled up a top of back board.

AREA:

Space requirements are 8'-0" x 10'-0" sqft. Minimum.

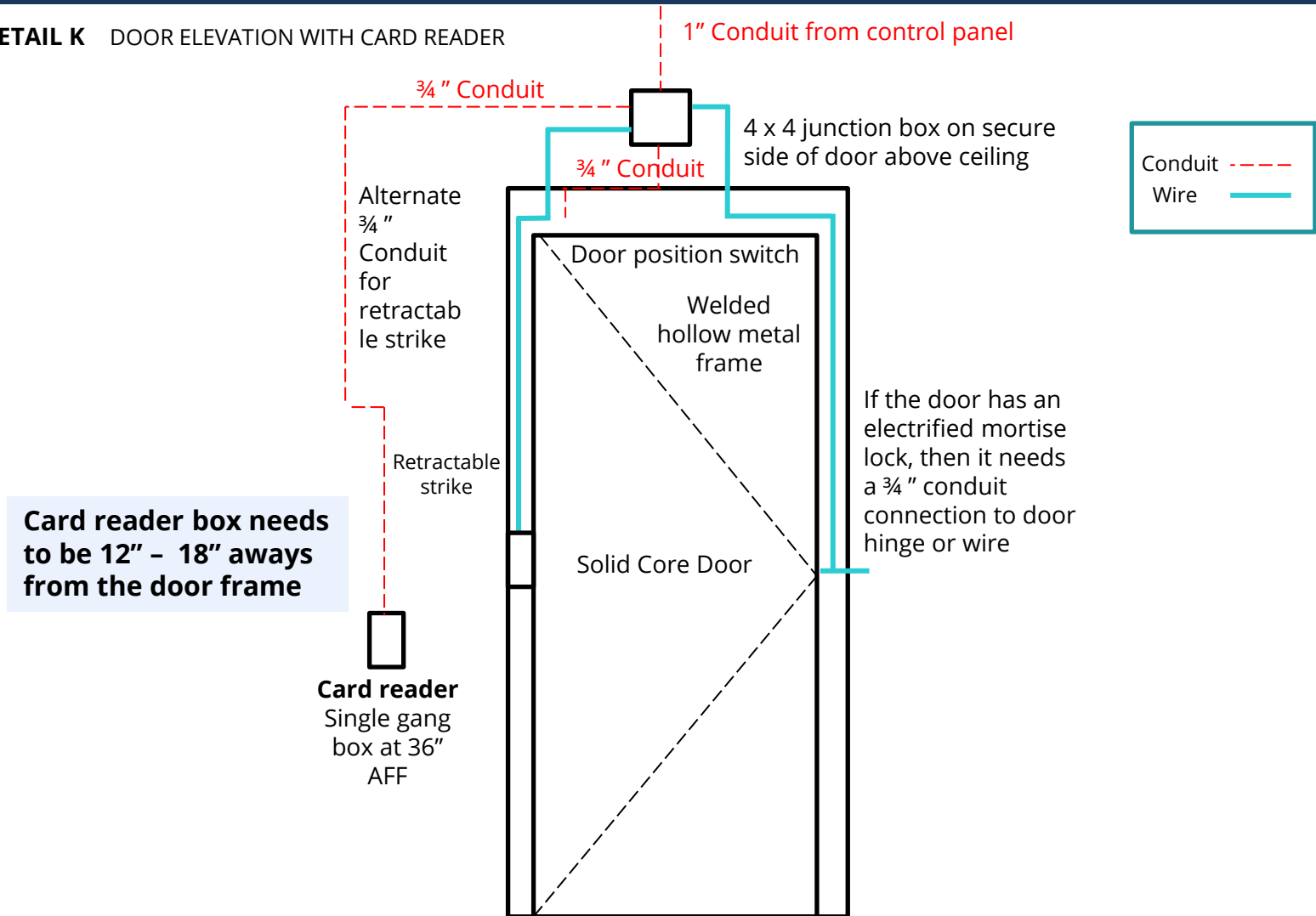
Lessor to provide power for the sound masking control module in the telecom room.

State approved business class or commercial fiber optic connectivity must be available on the property. If deviating from any of these requirements, please consult with the STS State Cabling Department.

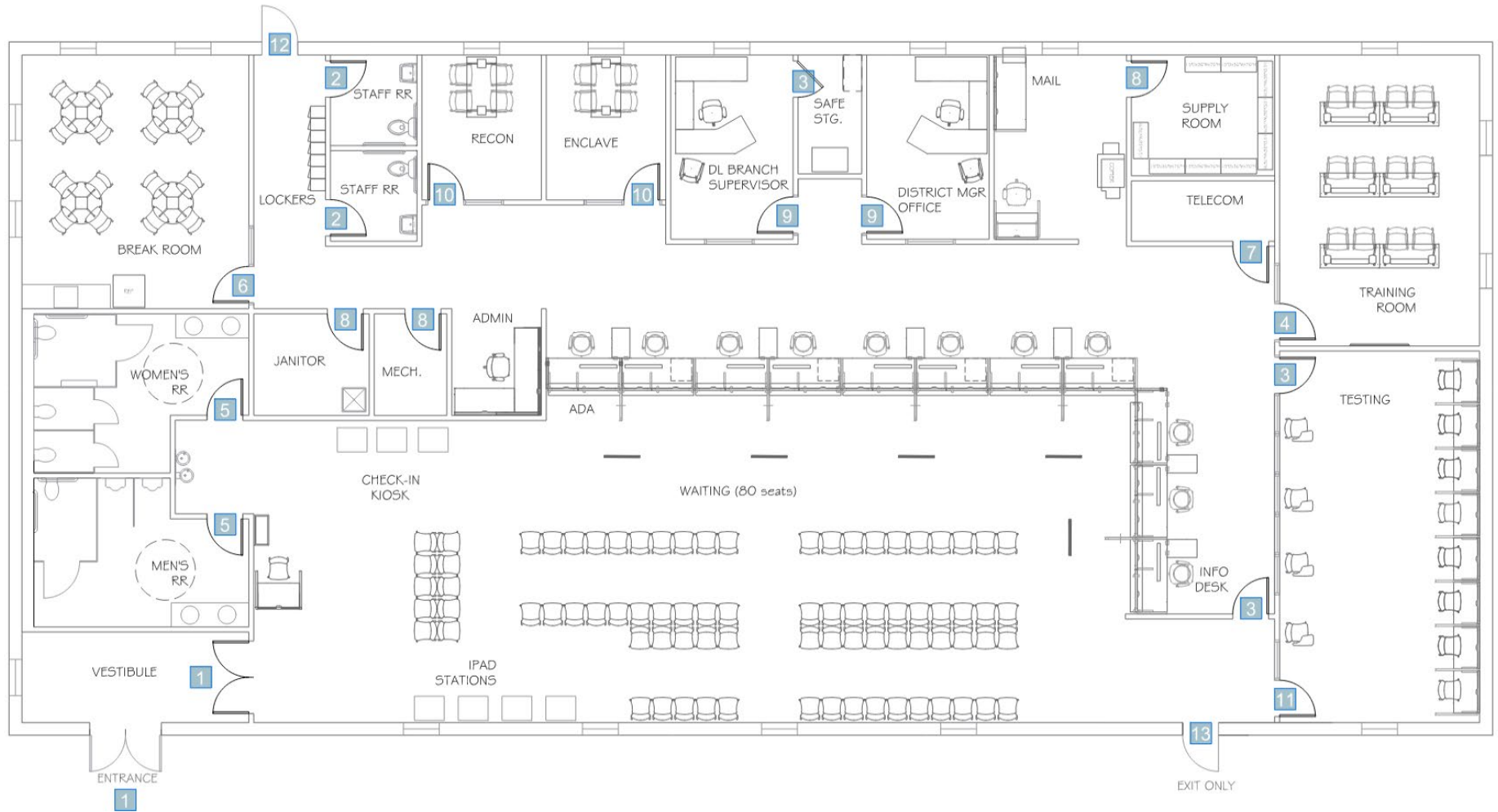
Only the State of Tennessee has access to the telecom room.

DOOR ELEVATION WITH CARD READER

DETAIL K DOOR ELEVATION WITH CARD READER

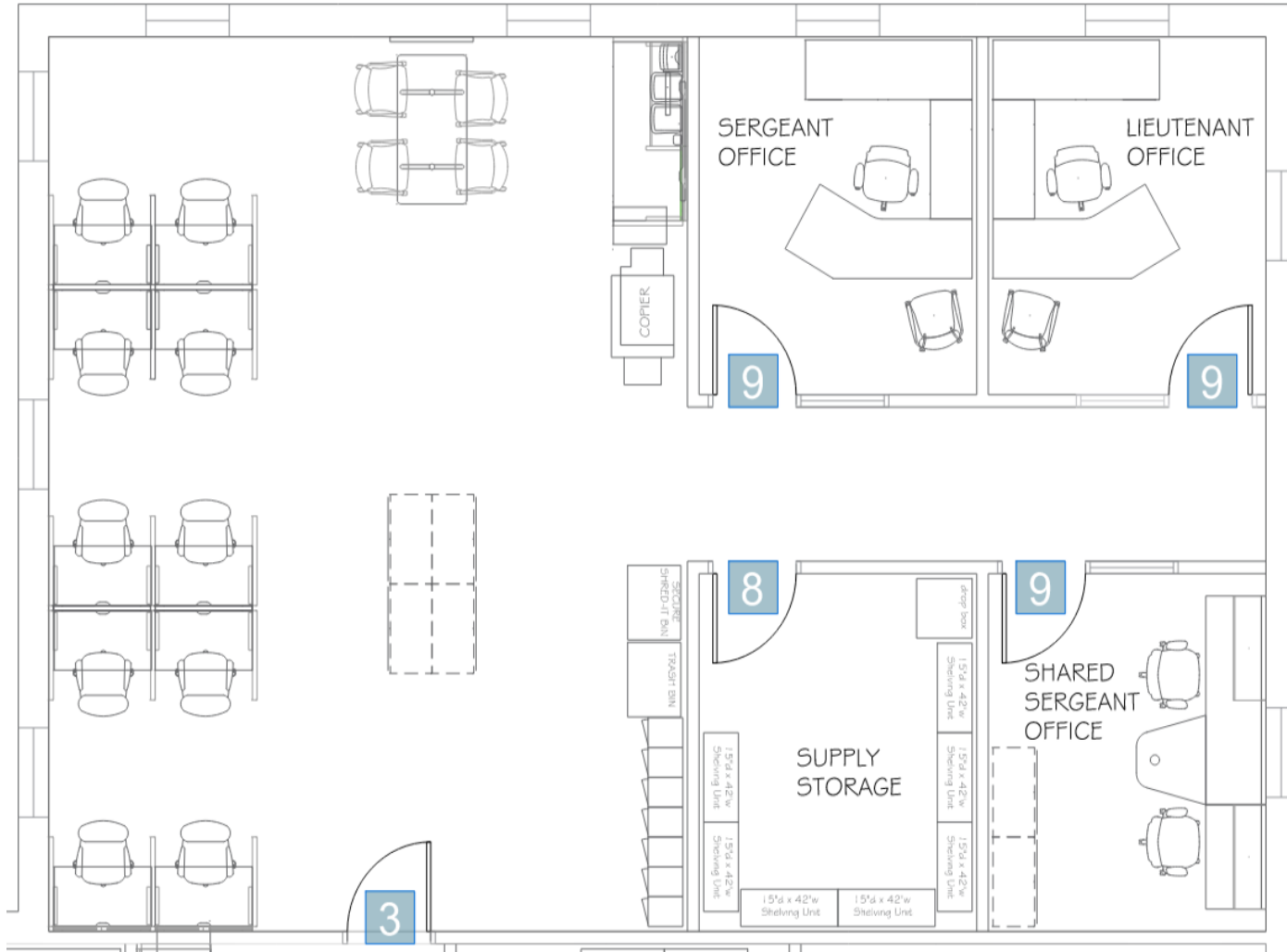


DOOR SCHEDULE – FLOOR PLAN



Typical DOS floor plan to reflect door locations. Refer to pages 1.23 for door type details.

DOOR SCHEDULE – FLOOR PLAN - THP SUITE



Typical DOS floor plan to reflect door locations. Refer to pages 1.23 for door type details.

DOOR SCHEDULE

NUMBER	LOCATION	FRAME TYPE	DOOR TYPE	SIDE LITE	LOCKSET	HARDWARE FUNCTION	ACCESS CONTROL	NOTE
1	Building Entrance, Vestibule, Waiting Room Entrance	Welded hollow metal	Store Front /Glass	None	STOREROOM LOCKSET	Panic bar, door closer.	Outside lever locked until a signal is received from the Access Control System. Inside lever always free	Direct to Grand Master (DGM) Key. For use with Access Controls when an Electronic Mortise Lockset is used.
2	Single Oppuancy Restrooms, Mother's Rooms	Welded hollow metal	Solid	Full Frosted window for Mother's room, None for Restrooms.	PRIVACY LOCKSET	Door closer	keyed to master outside	Staff can unlock when needed
3	Entrance to Zone 2 and 3 from Waiting Room and Testing Room. Safe Storage.	Welded hollow metal	Solid	None	STOREROOM LOCKSET	Electronic retractable strike or latch, door closer. Key direct to Grand master	Cardreader	
4	Conference / Programing to Zone 2	Welded hollow metal	Solid	Frosted striped film. Refer to state requirement on 1.6	CLASSROOM LOCKSET	Outside lever locked or unlocked by key,inside lever always free.	keyed to master outside or individual key.	
5	Multi-Stall Bathroom	Welded hollow metal	Solid	None	PUSH/PULL PLATES	Not lockable		or as dictated by code
6	Breakroom	Welded hollow metal	Solid	Yes	PASSAGE LOCKSET	Not lockable		
7	Telecommunication room	Welded hollow metal	Solid	None	PASSAGE LOCKSET	Lockable	Card reader	Must open out.
8	File Room, Supply Storage, Janitor Closet, Electrical, Mechanical Room	Welded hollow metal	Solid	None	STOREROOM LOCKSET	Door closer, key to fit master		
9	Private Offices	Welded hollow metal	Solid	Frosted striped film. Refer to state requirement on 1.6	OFFICE LOCKSET	Lockable	Separate change key	
10	Enclaves	Welded hollow metal	Solid	Frosted striped film. Refer to state requirement on 1.6	PRIVACY LOCKSET	Door closer	keyed to master outside	
11	Testing Room	Welded hollow metal	Solid	Frosted striped film. Refer to state requirement on 1.6	OFFICE LOCKSET	Door Closer, Lockable	Separate change key	
12	Staff entrance to enclosed parking	Welded hollow metal	Metal	None	ENTRANCE LOCKSET	Panic bar, door closer.	Card reader	Peep hole on door. Only opens with card reader. Transition threshold metal with a sweeper brush door
13	Exit Only	Welded hollow metal	Metal	None	EXIT ONLY NO RE-ENTRY	Panic bar, door closer. Lockable from outside door closer		Does not open from the exterior. Transition threshold metal with a sweeper brush. Peep hole to look out
<p>Note: Refer to state standards for required infrastructure and hardware regarding doors with card readers When keypads are required, communication shall be between landlord and agency</p>								

RESTROOM ACCESSORIES

ACCESSORY DISPENSER INFORMATION:

<u>Paper Towel:</u>	Georgia-Pacific enMotion® Impulse® 8" Automated Touchless Paper Towel Dispenser 8.580" x 12.700" x 13.800" - Plastic - Black 044628 MFG #: GPC59498A **Hand dryers in place of paper towel in the public facing facilities/restrooms are preferred.
<u>Soap Dispenser:</u>	Spartan Lite'n Foamy Soap Dispenser Manual - 1000 ML - Plastic - Black 770803 MFG #: 9757
<u>Bathroom Tissue Dispenser:</u>	Georgia Pacific® Professional Jumbo Jr. Bathroom Tissue Dispenser Jumbo Jr. Bathroom Tissue Dispenser, Single Roll, 10.6 x 5.4 x 11.3, - Translucent Smoke 451998 MFG #: GPC59009

FLOORING SPECIFICATIONS

FLOORING SPECIFICATION

Carpet Tile Specifications:

Carpet tile must meet the following minimum qualifications:

Modification Ratio: 2.1 or less

Pile Characteristic: Level-loop, Cut-and-loop pile, Shear-and-loop pile

Density: Minimum rating of 5000

Stitches: Minimum of 9 stitches per inch

Gage: 1/12 inch minimum

Surface Pile: 15 oz per square yard or Greater

TARR Rating: 3.0 Min. (Heavy to Severe Required) Primary Backing: Non-woven synthetic

Secondary Backing: Density (ASTM D-1667): 65 min. lbs./cu ft. +/- 5% Face yarn fully fused to secondary backing system that will not delaminate. No delamination per ASTM D3936

Dye System: 100% Solution Dyed

Size: Minimum 24" x 24" or 9" x 36"

Applied Soil Resistance Treatment: Duratech, Protech, or equal

Antimicrobial Treatment: Manufacturers standard material according to AATCC174

Luxury Vinyl Tile/Plank Specifications:

*Lessor may use LVT/LVP for any or all areas where VCT is specified and must meet the following minimum qualifications:

Products: All manufactures to provide LVT/LVP as specified below and in addition to meeting the minimum requirements. Meet ASTM F 1700 13a and/or ISO 10582

Commercial Grade Luxury Vinyl Tile (LVT/LVP): Rated for at least a medium to heavy traffic with a minimum of 10 year warranty
Wear Layer/Top-Coat: 20 mil (0.5mm)

Overall Thickness of Tile: 2.0 mm minimum

Seaming Method: Standard

Pattern: Pattern to be determined by Interior Design Project Manager. (Ashlar, Monolithic, Herringbone etc.) Lessor should plan on up to 3 colors for each area LVT/LVP/VCT are installed with a pattern integration. Use of additional colors will depend on the materials specified

Width/Size of Tiles: LVP (Luxury Vinyl Planks) minimum of 6-inch width. LVT (Luxury Vinyl Tiles) at a minimum of 12 x 18

**Consult State's Project Designer for appropriate size based on application for desired space if requesting use of sizes greater than 12x18 tiles. Consultant will provide design pattern for installation areas with finish plan

Tile Edges: Squared

Installation Method: Per Manufacturer's Recommendations. Concrete subfloors may require a moisture barrier and will be required if product specifies. Flooring may be floated or glued down according to project needs. Adhesives must meet industry and recommended standards per manufacture's recommendations