



# DEPARTMENT OF CORRECTION

## BRIDGING DOCUMENT

REVISED: 2/24/2026



This packet contains a comprehensive set of spaces found in typical **Department of Correction (DOC)** Community Supervision offices; some areas noted may not be included in the agency-approved block plan that accompanies these drawings. This packet also contains specific operational and programmatic needs of the State of Tennessee that are above and beyond the minimum code requirements.

The lessor and architect of record are responsible for confirming that the Construction Documents meet all applicable code and ADA requirements in addition to what is required per the lease.



INDEX OF STANDARD TYPICAL DRAWINGS	
DRAWING	SHEET
SAMPLE PLAN (SPATIAL ZONING)	0.0
EXTERIOR	0.1
WALL & CEILING SPECIFICATIONS	0.2
WALL CONSTRUCTION	0.3
ACCESS CONTROL & SOUND MASKING	0.4
FLOORING TYPE	0.5
POWER & DATA LOCATIONS	0.6
POWER & DATA LOCATIONS – PER ROOM	0.6A
POWER & DATA LOCATIONS – PER ROOM	0.6B
POWER & DATA LOCATIONS – PER ROOM	0.6C
POWER & DATA LOCATIONS – PER ROOM	0.6D

DETAIL #	DESCRIPTION	PAGE
A	SYSTEM FURNITURE ELECTRICAL	1.0
B	RECEPTION WINDOW DETAIL	1.1
C	J-PAY KIOSK DETAIL	1.2
D	PUBLIC RESTROOM & DRINKING FOUNTAIN HEIGHT	1.3
E	FINGERPRINT CASEWORK	1.4
F	DRUG SCREENING & PREP WINDOW	1.5
G	ELEVATION OF OFFICE	1.6
H	DOOR STRIPING FILM	1.7

INDEX OF STANDARD TYPICAL DRAWINGS	
DRAWING	SHEET
TELECOMMUNICATION	1.20
DOOR ELEVATION WITH CARD READER	1.21
DOOR SCHEDULE: FLOOR PLAN	1.22
DOOR SCHEDULE	1.23 A
DOOR SCHEDULE	1.23 B
RESTROOM ACCESSORIES	1.24
ENTRANCE DOOR SIGNAGE	1.25
EXERIOR SIGNAGE	1.26
FLOORING SPECIFICATION	1.27

**NOTE:** These drawings are **not to scale**, including furniture prototypes. They have been developed based on programming information and requirements of individual agencies for the State of Tennessee. The Architect of Record shall utilize this information to develop complete construction documents, in compliance with applicable codes and regulations. **Please refer to lease for additional requirements.**

# SAMPLE PLAN (SPATIAL ZONING)

ZONE 1:  
CLIENT

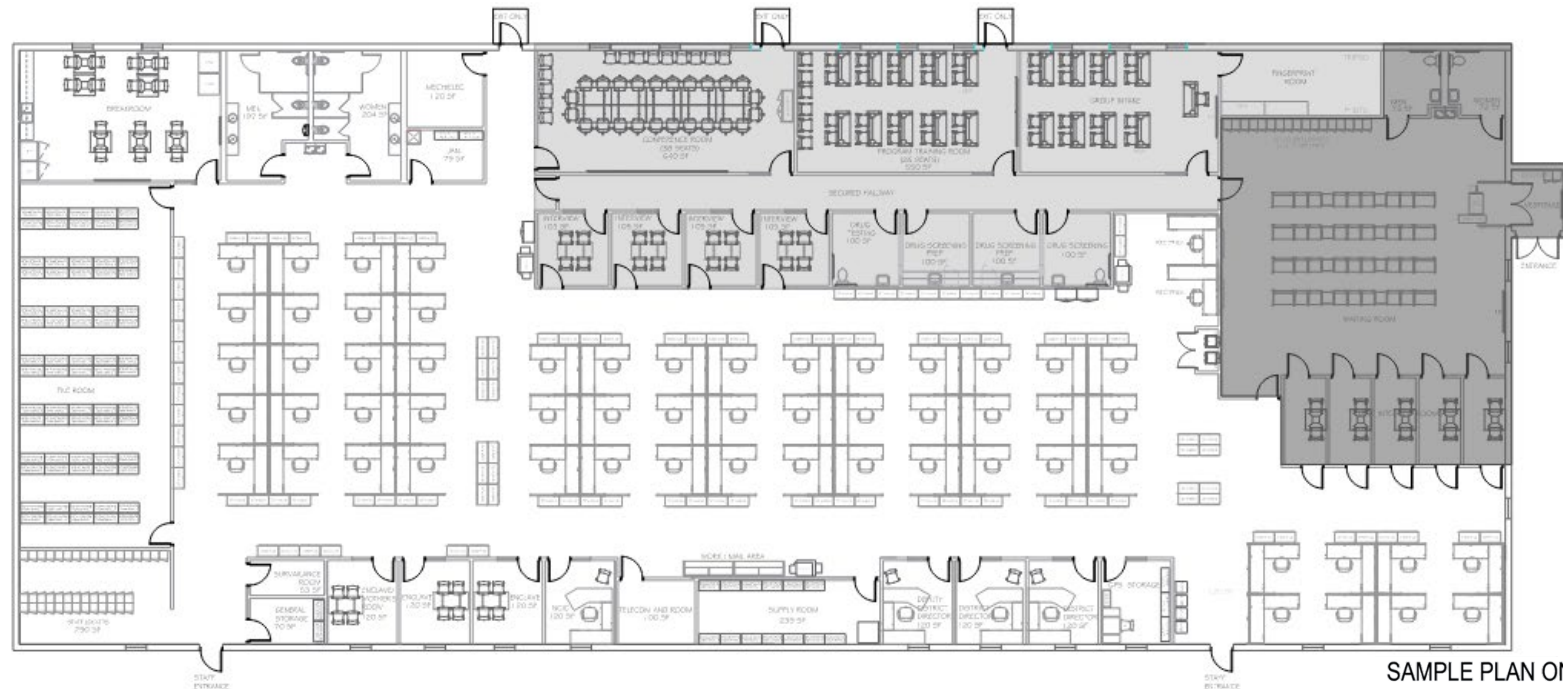
**Client Access.** Security measures are required between the client zone and intermediate zone. client zone requires immediate access to customer parking lot, and should include waiting room, client restroom(s), drinking fountain(s), Fee Paying machine(s), small client interview room(s), and other public amenities.

ZONE 2:  
INTERMEDIATE

**Escorted Access.** This zone is accessible to staff and clients. Staff members escort the clients in and out of these areas. This zone includes group intake, fingerprint room, drug screening, drug screening prep, large interview, and various program/conference rooms.

ZONE 3:  
STAFF

**Staff Only.** The staff zone consists of spaces accessible by employees only, including workstations, offices, storage rooms, breakroom, copy/mail area, enclave(s), staff restrooms, and other utility rooms. This zone requires separate employee-only entrance(s) from the secured staff parking area.



SAMPLE PLAN ONLY.  
NOT FOR CONSTRUCTION.

# EXTERIOR REQUIREMENTS

## Exterior

- Exterior walls should be masonry or brick veneer construction and should not include typical “storefront” window-wall assemblies.
- Exterior windows to be at least 5’ above finish floor (AFF) to prevent a straight look into the interior staff spaces; no full height unless stated otherwise on a per-project basis; Otherwise, clerestory windows are ideal. Tinting is allowed in existing locations. Provide window treatment/blinds for all exterior windows, preferably metal blinds.
- Building entrances to be covered
- Security Cameras: Provide data lines with double junction box mounting and conduit to the Telecommunications Room for the following camera locations; adjacent to all exterior entry doors, the Waiting Room and other locations, based on the lease space required, within the staff areas based on the final space layout.
- Provide exterior lighting at all building entry/exit doors. Exterior building mounted.
- Lessor to provide decal signage on front glass door, graphics per state standard
- Lessor to provide exterior building signage per state standard
- Exterior to include fenced staff and fleet parking lot with motorized gate (agency expense)
- Exterior landscaping to have minimal trees and bushes
- If fleet vehicle parking, then provide 8’ chain link fence and card reader access
- Fence: 8' height, black, coated, Class 2B - 8-gauge finish (9-gauge core) chain link fabric, 2" chain link mesh, fence.
- 2-1/2" O.D. 20-weight line posts, 3" O.D. 20-weight end posts, and 3" O.D. 20-weight corner posts. Line posts to be on 10' centers.
- 1-5/8" diameter, 20-weight, top rail. 6-gauge coated bottom tension wire.
- Vehicle Gates: Cantilever slide gates, “TBD size of” opening, 2-1/2" top and bottom horizontal, 2" uprights, 1-5/8" diagonal bracing, 4" O.D. gate posts, nylon rollers, with receiver latch.
- Passage Gate: single swing gates, 4' opening X 8' height, 1-5/8" frame diameter, 20-weight frame, black, coated, Class 2B - 8-gauge finish (9-gauge core) chain link fabric, 3" chain link mesh, 3" O.D. gate posts.
- Gooseneck Pedestal: To be installed and place on approach from gate at an appropriate distance from gate for installation of card reader or keypad to operate opener.
- Electrical: As required by gate openers(provided by owner), this would include line voltage and low voltage pathways from the facility to the vehicle and passage gates.
- Slab: Slab size and location to be determined by gate openers.

# WALL & CEILING SPECIFICATIONS

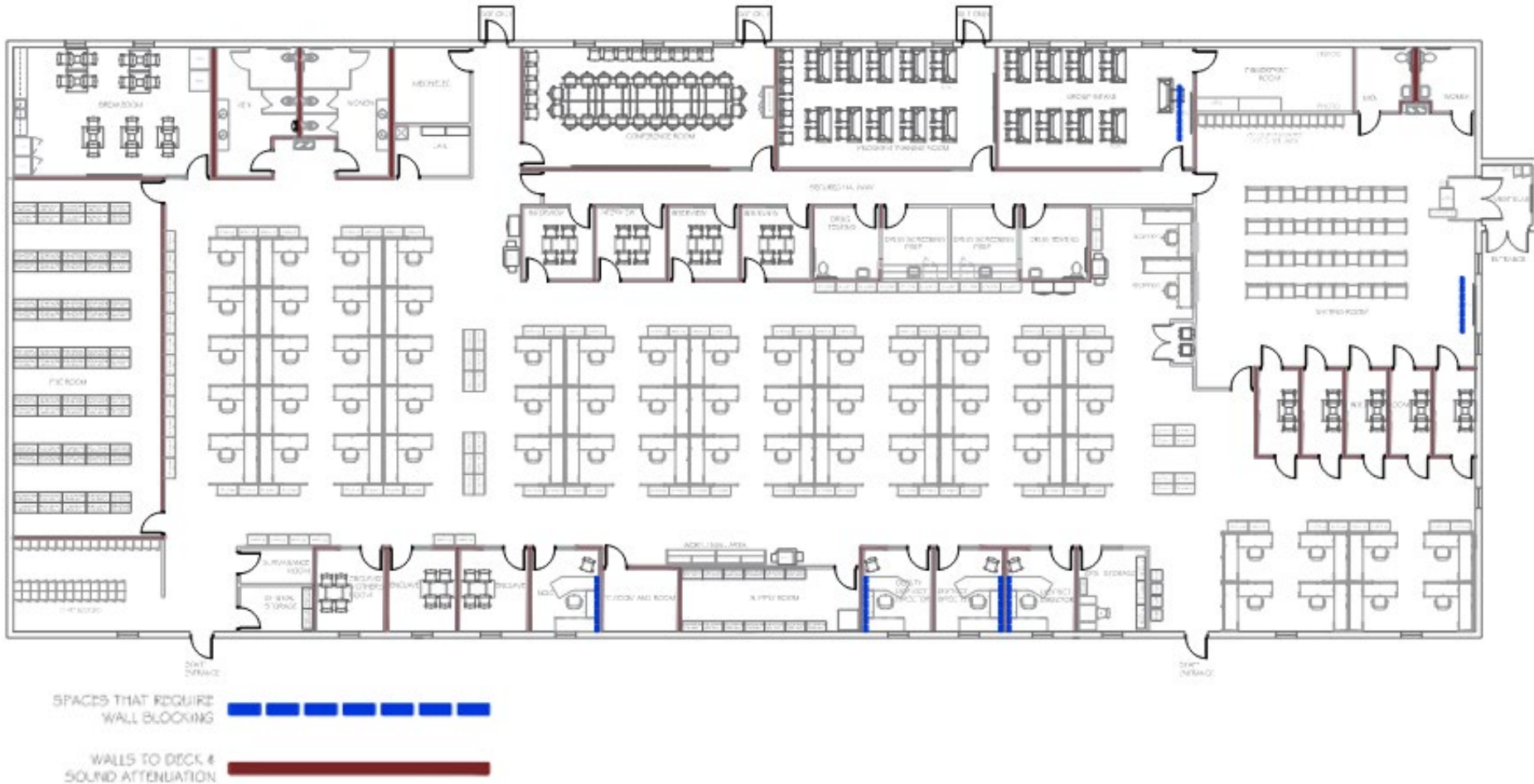
## Common Walls

- Common walls shall include slab-to-slab gypsum wallboard on the public side of all demising walls, corridors, stairwells, and other walls not interior to the Tenant space. All common walls shall be taped, blocked, finished, and sanded. Landlord will install sound attenuation insulation on Tenant side of Common Walls and demising walls prior to Tenant finishes being installed or applied.
- Landlord shall furnish and install entry and exit doors in the Common walls from the common areas into the Leased Premises.

## Partitions

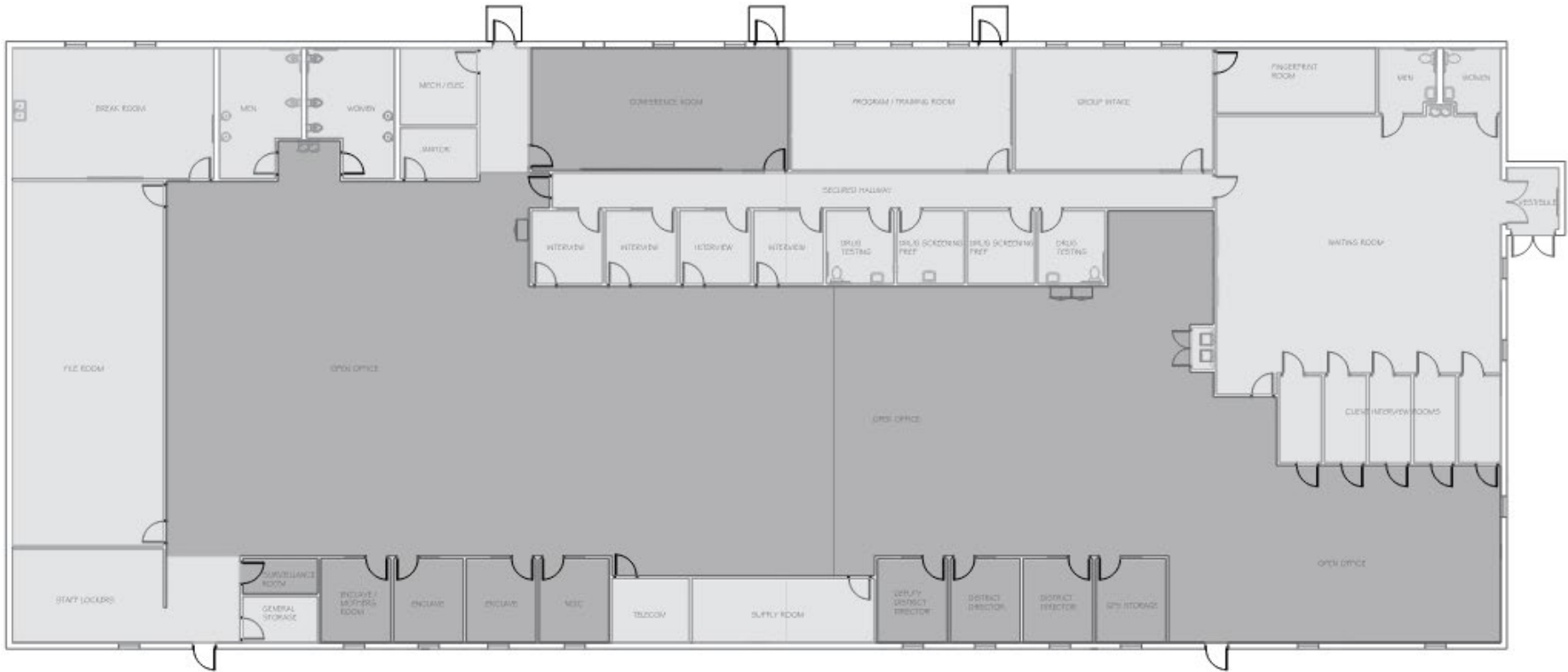
- All existing perimeter sill walls and core walls throughout space shall be freshly painted in an eggshell or satin paint finish.
- All new partitions shall be constructed with 5/8" drywall and 3 5/8" metal studs with sound attenuation blankets installed per manufacturers recommendations inside the partition wall. Additional sound attenuation blankets shall be installed on ceiling tile.
- Partitions around to include but not limited to all conference rooms, training rooms, break rooms, , and restrooms, shall built to deck. Sound attenuation blankets shall be installed per manufacturers recommendation inside the partition wall, seal all penetrations within partition walls including power/data boxes and at the connection of the partition to the deck.
- Landlord shall install sound attenuation blankets on the ceiling tiles to include but not limited to, meeting rooms(enclaves), and offices.
- Connections from partition to mullion will require an acoustically sealed connection.
- Finish partitions completely to floor.

# WALL CONSTRUCTION





# FLOORING TYPE

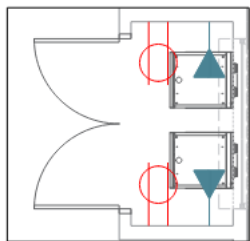


CARPET

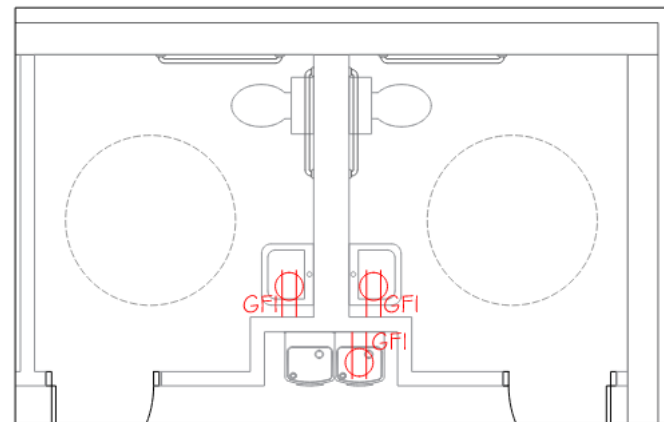
HARD SURFACE



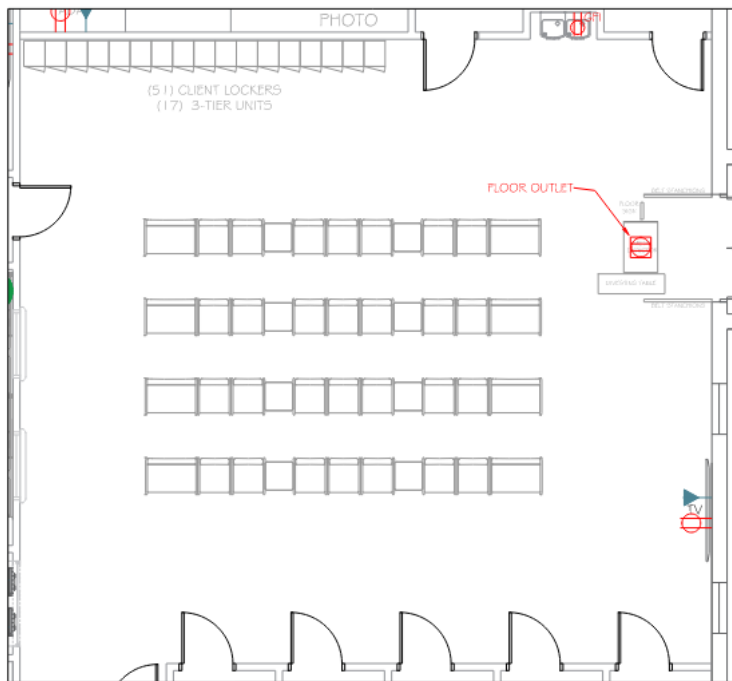
# POWER & DATA LOCATIONS – PER ROOM



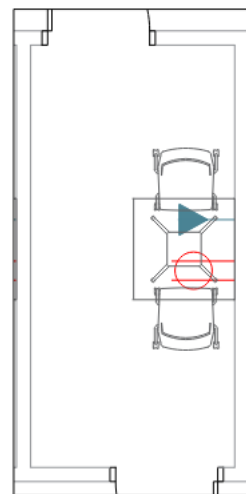
J-PAY KIOSK  
NOT TO SCALE



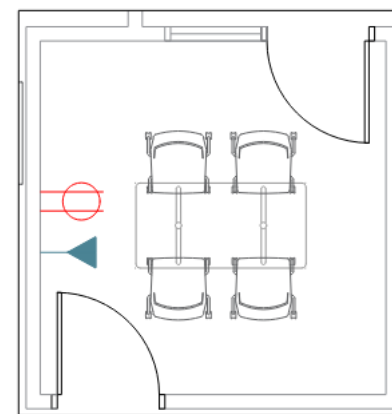
CLIENT RESTROOMS  
NOT TO SCALE



WAITING ROOM  
NOT TO SCALE



SMALL INTERVIEW ROOM  
NOT TO SCALE

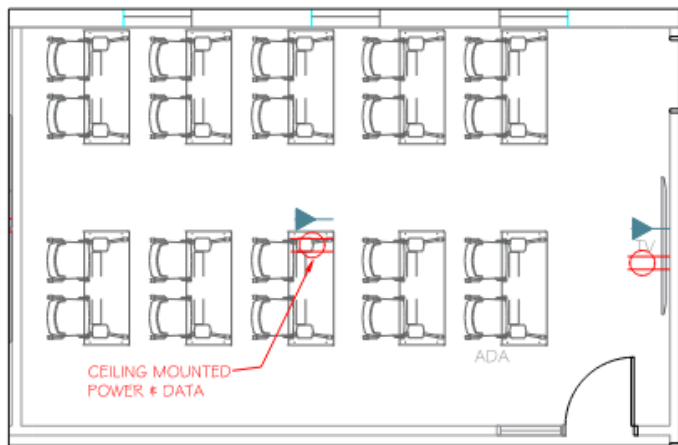


LARGE INTERVIEW ROOM  
NOT TO SCALE

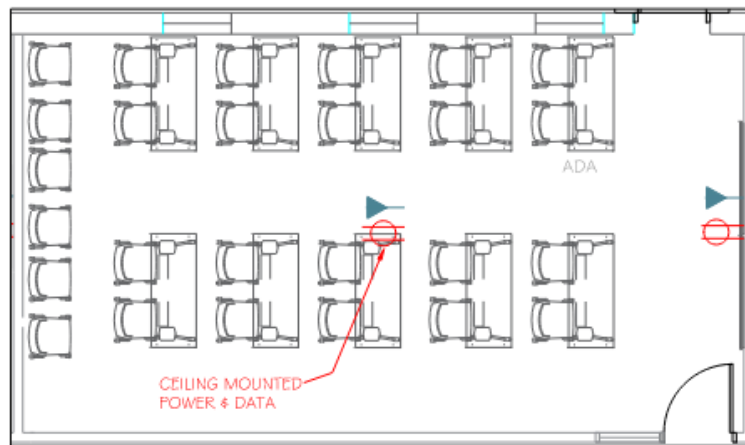
# POWER & DATA LOCATIONS – PER ROOM



FINGERPRINT ROOM  
NOT TO SCALE

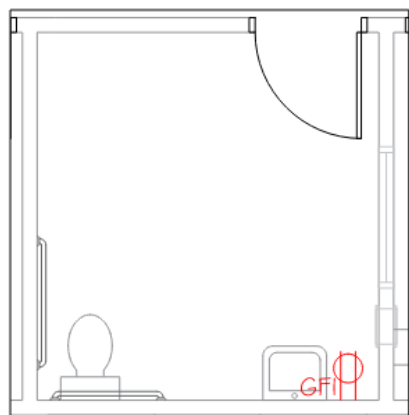
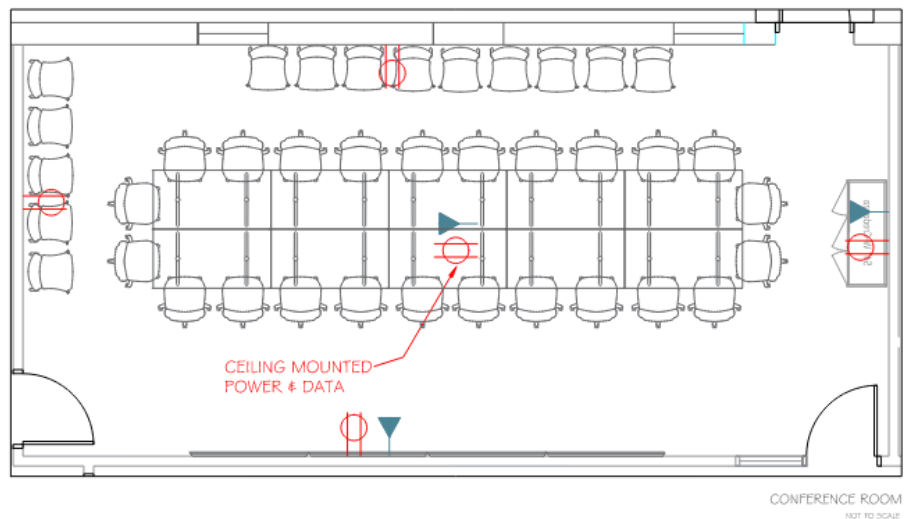


GROUP INTAKE  
NOT TO SCALE

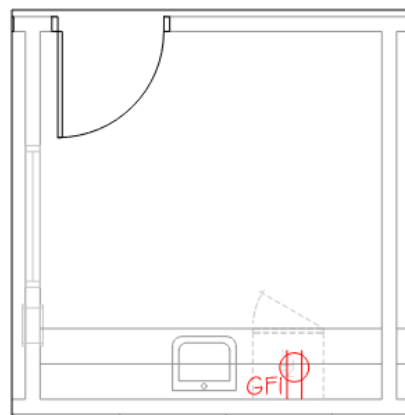


PROGRAM TRAINING ROOM  
NOT TO SCALE

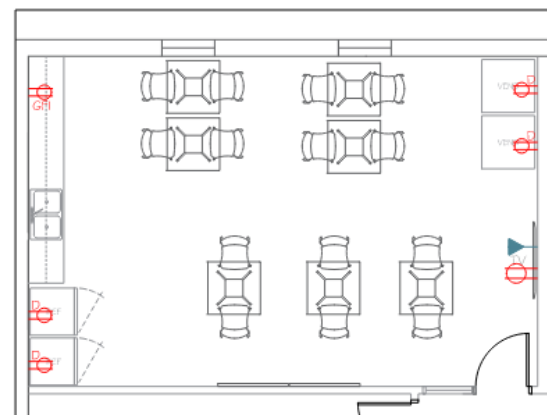
# POWER & DATA LOCATIONS – PER ROOM



DRUG TESTING  
NOT TO SCALE

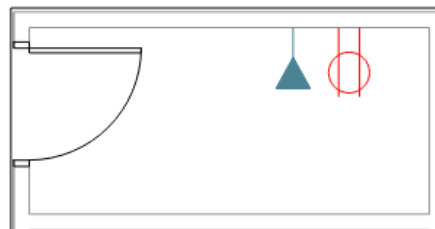


DRUG SCREENING PREP  
NOT TO SCALE

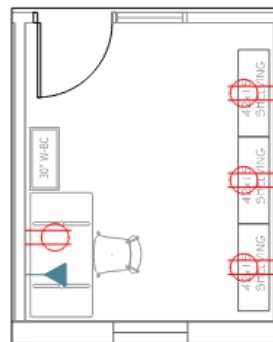


BREAKROOM  
NOT TO SCALE

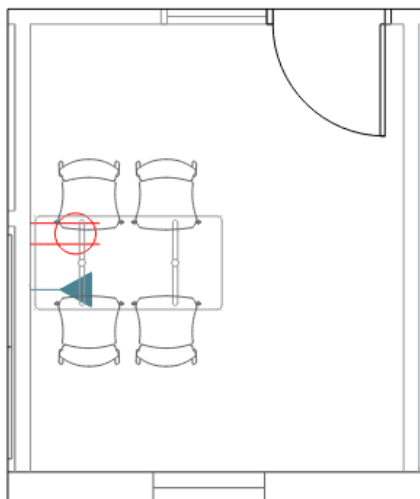
# POWER & DATA LOCATIONS – PER ROOM



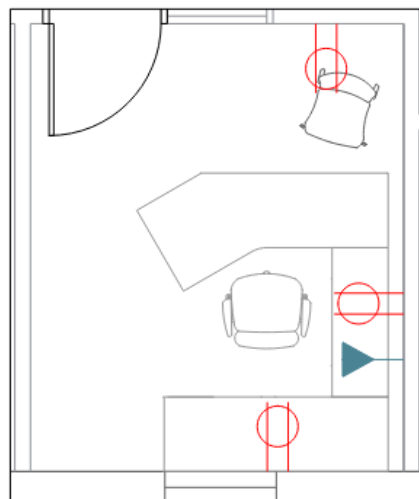
SURVEILLANCE ROOM  
NOT TO SCALE



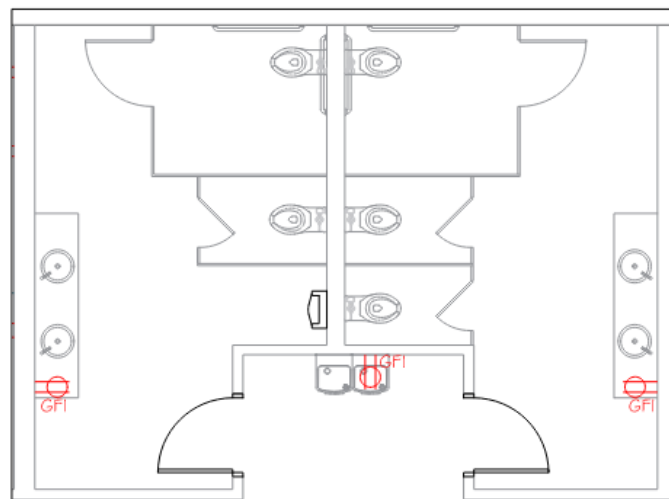
GPS STORAGE ROOM  
NOT TO SCALE



MOTHER'S ROOM / ENCLAVES  
NOT TO SCALE



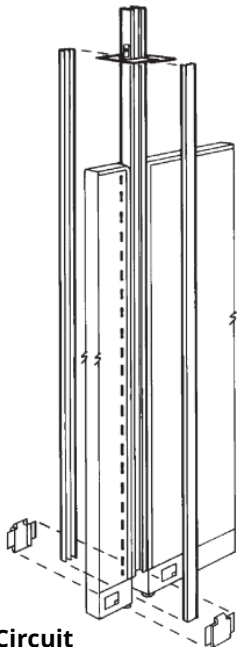
PRIVATE OFFICES  
NOT TO SCALE



STAFF RESTROOMS  
NOT TO SCALE

# SYSTEMS FURNITURE ELECTRICAL REQUIREMENTS

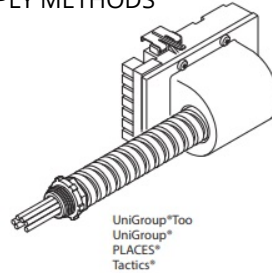
Vertical pole for routing power harness and communication cables from ceiling.



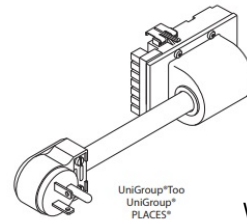
### 3-Circuit

- As many as three separate 20-Amp rated circuits from 1 power feed module.
- 8-Wire system enclosed in one power distribution assembly:
  - 3 hot wires
  - 3 neutral wires
  - 1 common ground wire
  - 1 isolated ground wire
- Separate neutrals, one dedicated to each circuit, are capable of carrying computer-quality power.

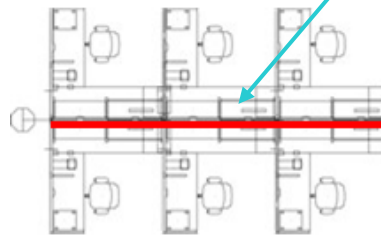
### DETAIL A POWER SUPPLY METHODS



Flexible metal conduit construction for routing power to panels and tables.



Workstation spines consists of power, the junction boxes must be within 1 foot from a whip.



### OVERALL:

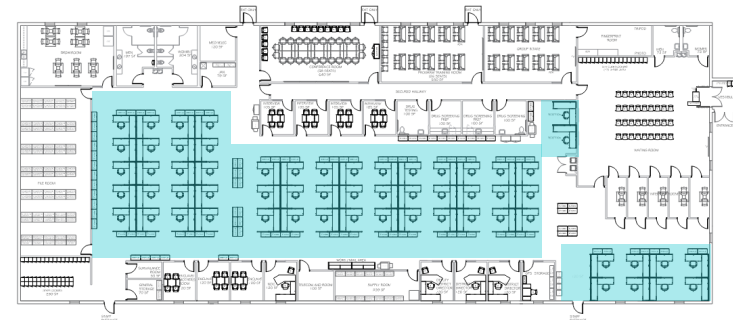
#### 3-Circuit/Separate Neutrals

This option provides three circuits, each with its own neutral.

- Aligns with the 3-phase national power grid and most North American buildings.
- Is compatible with the following building power configurations:
  - 3 phase (208Y/120V)
  - Three wire single phase (120/240V)
  - Single phase (120V)

Needed: Junction box 1 circuit to power 2 workstations  
Junction box 2 circuits to power 4 workstations

Note: If ceiling is a hard surface, then base feeds must be supplied for power.  
Power poles can be adjusted on site anywhere on power panels.

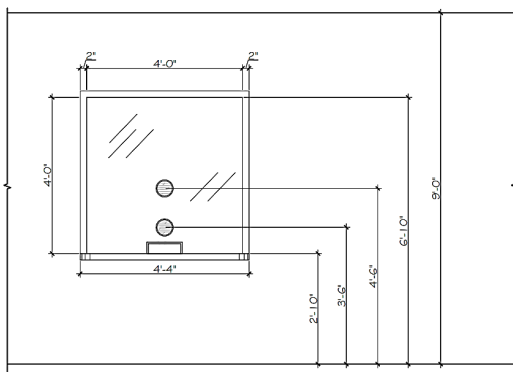


Building needs to be equipped with ceiling junction boxes for all systems furniture unless base feeds are specifically noted. All electrical outlets and rough-ins for data need to be provided by building owner.

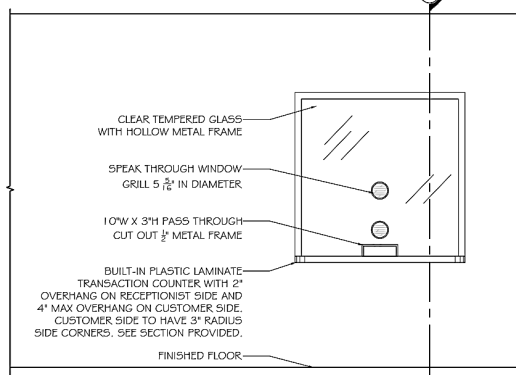
# RECEPTION WINDOW

## DETAIL B

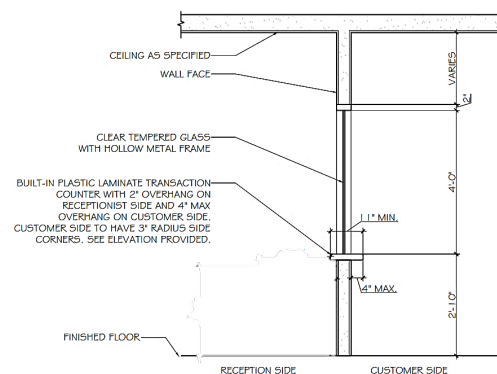
### RECEPTION WINDOW DIMENSIONS



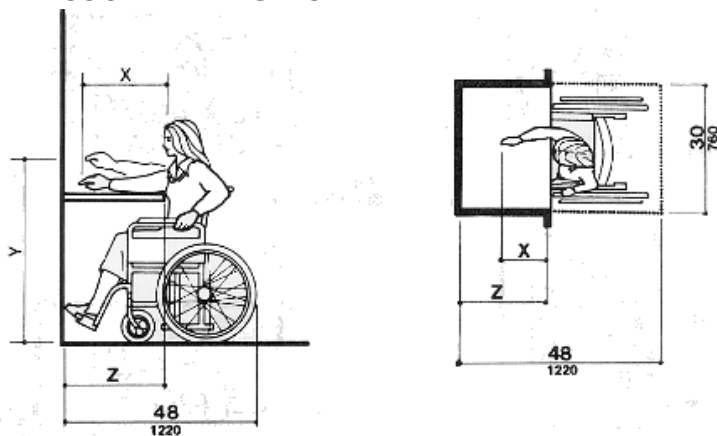
### RECEPTION WINDOW ELEVATION



### RECEPTION WINDOW SECTION

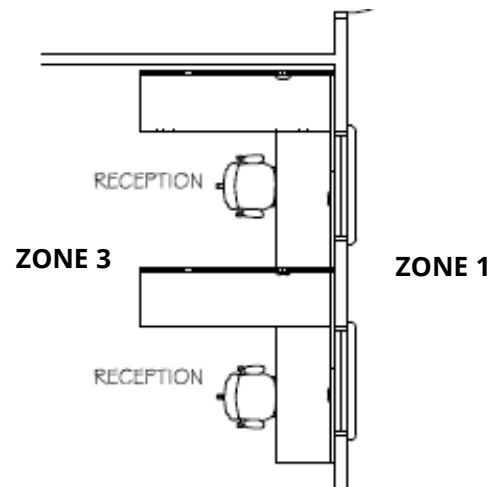


### ADA COUNTER HEIGHTS



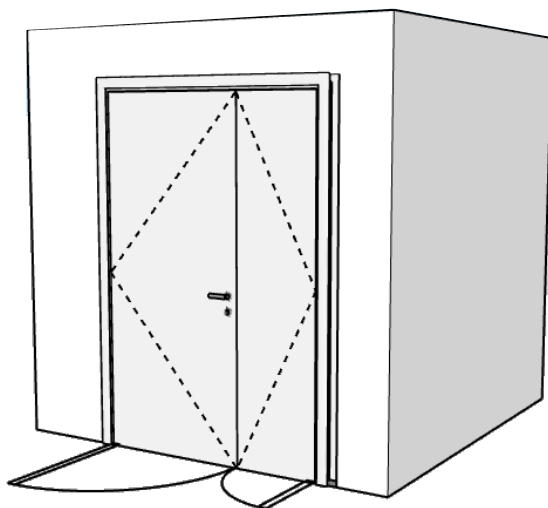
NOTE: x shall be  $\leq 25$  in (635 mm); z shall be  $\geq x$ . When  $x < 20$  in (510 mm), then y shall be 48 in (1220 mm) maximum. When x is 20 to 25 in (510 to 635 mm), then y shall be 44 in (1120 mm) maximum.

### RECEPTION WINDOW FLOOR PLAN

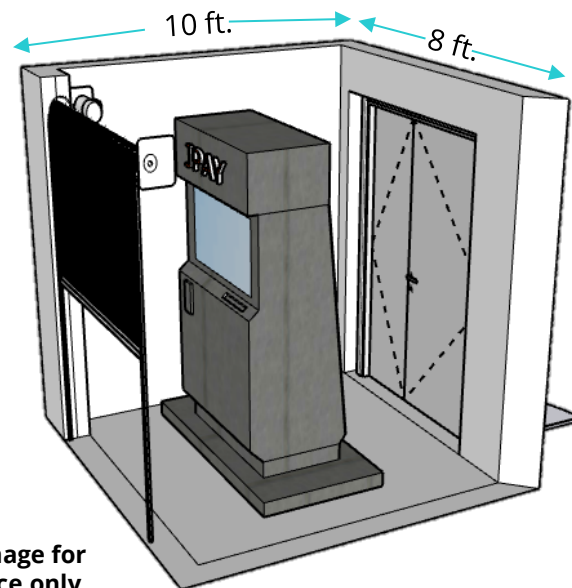


# J-PAY KIOSK

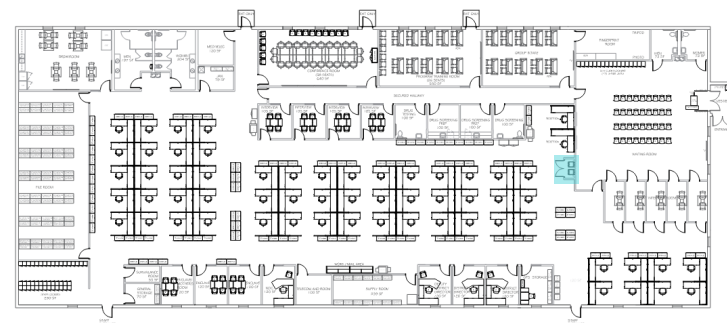
## DETAIL C J-PAY SPACE REQUIREMENT



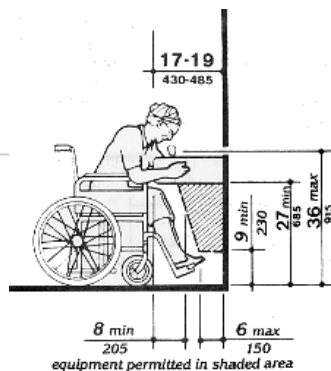
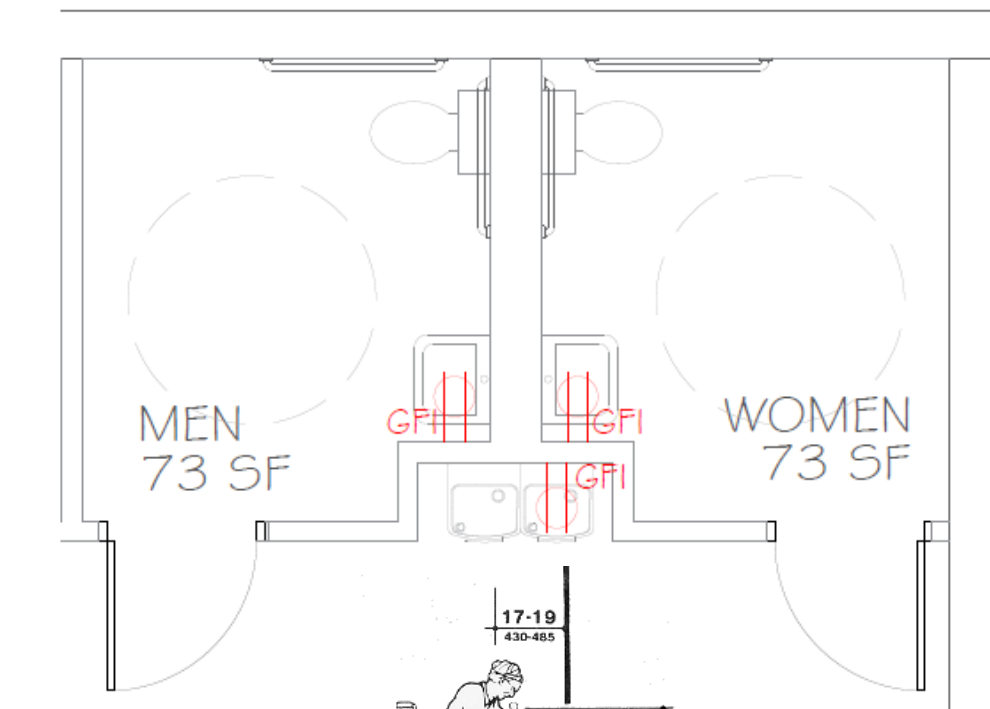
**Fee Kiosk image for reference only. Equipment will vary.**



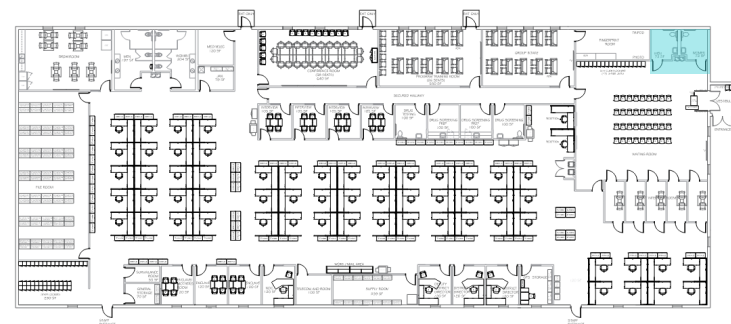
**J-Pay image for reference only. Equipment will vary.**



# PUBLIC RESTROOMS & DRINKING FOUNTAIN

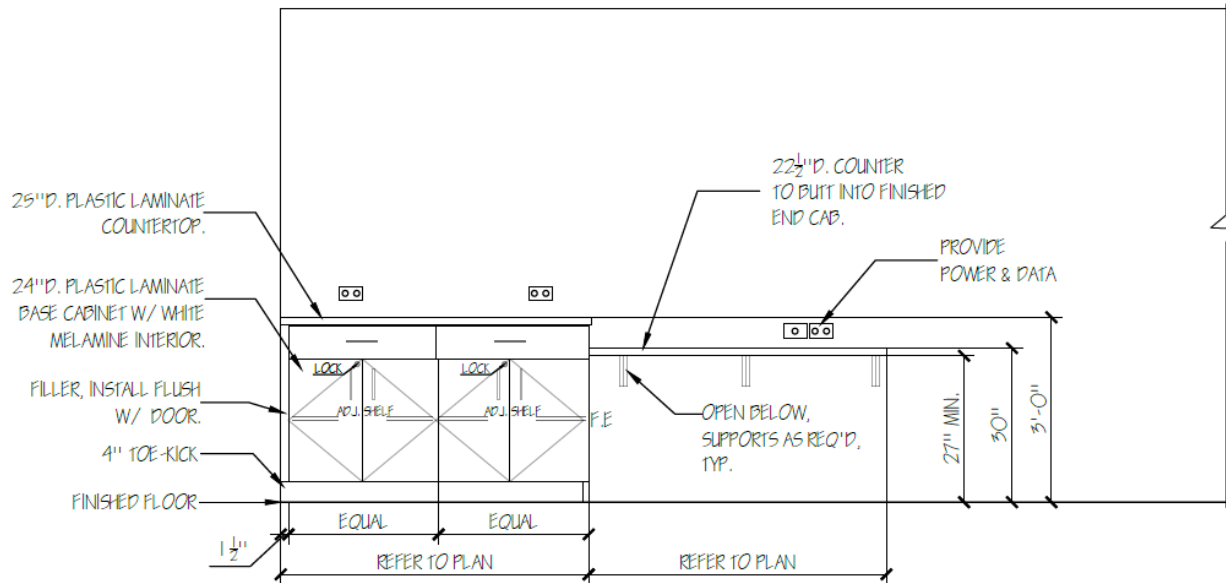


**DETAIL D** DRINKING FOUNTAIN HEIGHT  
www.ada.gov

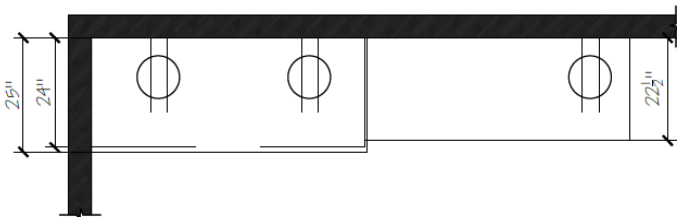


# FINGERPRINT CASEWORK DETAIL

## DETAIL E



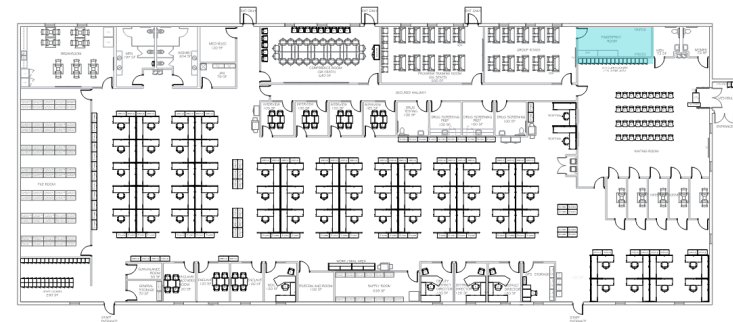
100C. FINGERPRINT ROOM ELEVATION TYPICAL



FINGERPRINT ROOM CABINERY PLAN

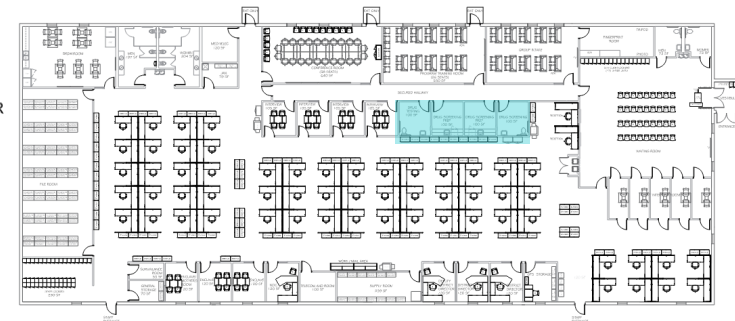
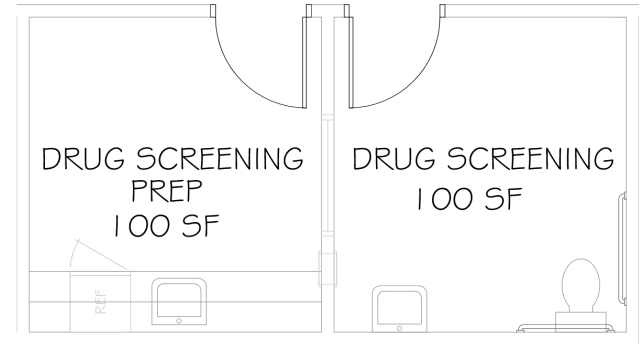
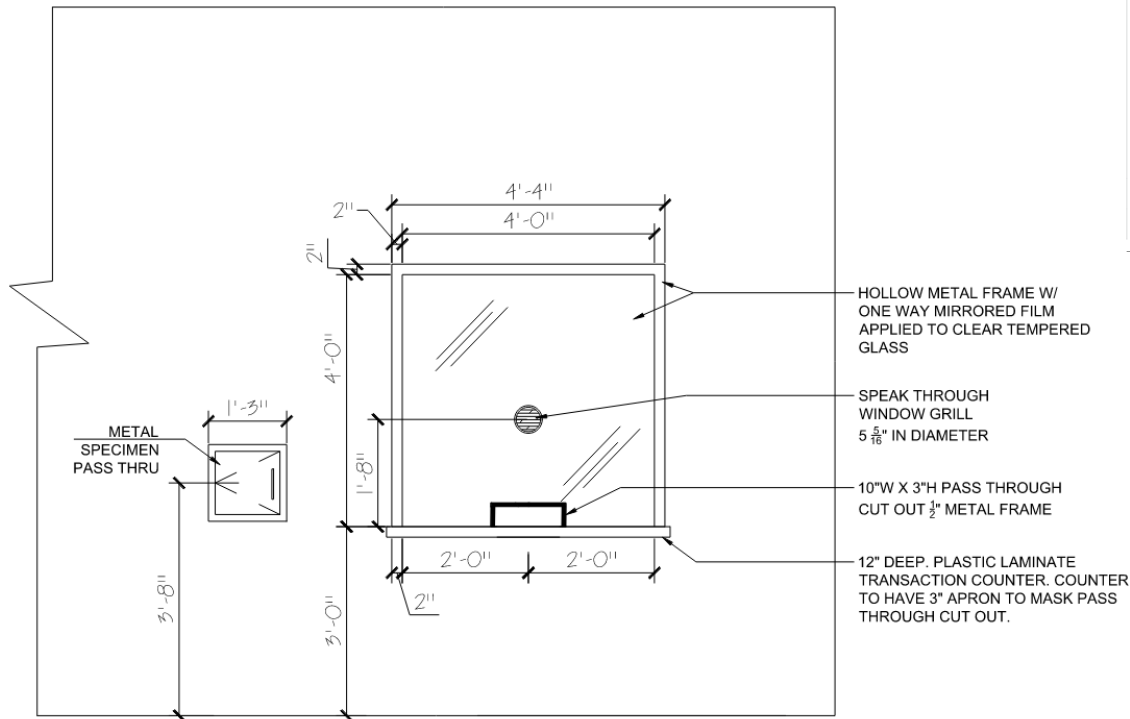
### ITEMS TO NOTE

- Equipment 36" H. Counter will accommodate laptop & printer
- Lessor to provide lock on doors
- Fingerprint machine or live scan will sit on lower counter (power/data)
- Plastic laminate cabinets w/ white melamine interiors.

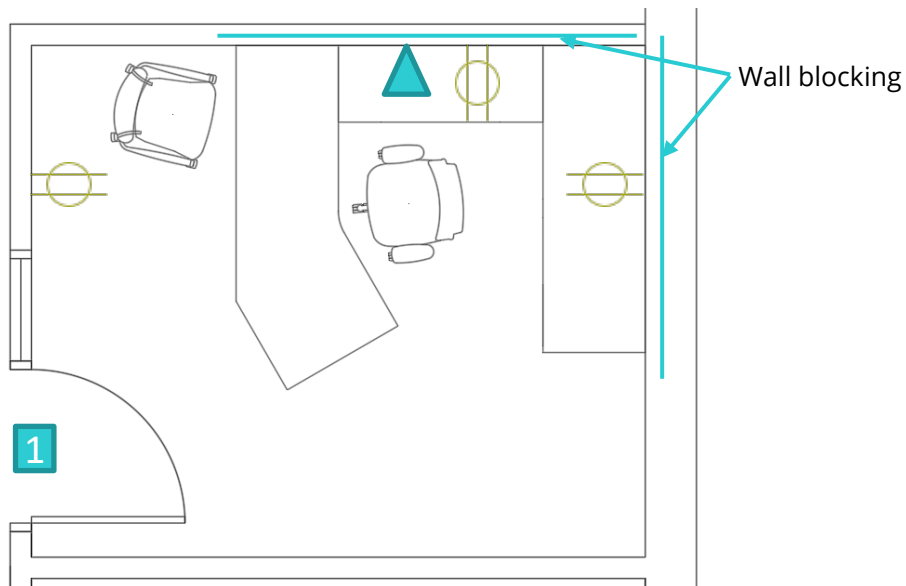


# DRUG TESTING / DRUG SCREENING – WINDOW DETAIL

## DETAIL F



# PRIVATE OFFICES



Wall blocking behind overhead storage

**DETAIL E**  
ELEVATION OF OFFICE



**ROOM OVERALL:** Located in Zone 3. Wall blocking is required on new construction to support overhead storage, typically located on the rear or side wall. **Note: Do not provide blocking over a window.** See **Detail I.** (Pg. 1.12)

**FLOORING TYPE:** Carpet

**DOORS:**

	TYPE	HARDWARE
1	Solid door with side lite	OFFICE LOCKSET Separate change key

typical full frost banding applied to sidelight  
See **Detail H** (Pg.1.10).

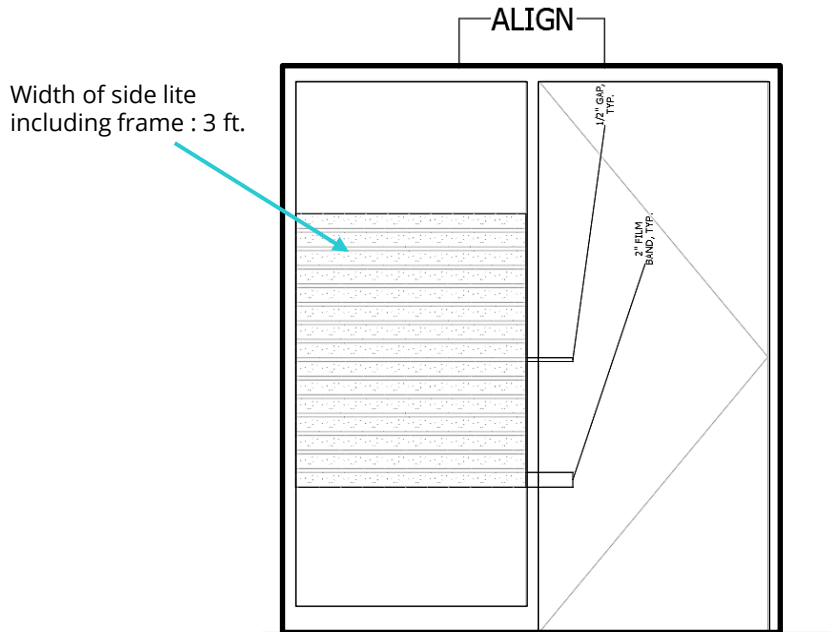
**WINDOW:** Exterior window treatment

**ELECTRIC:** 1 data and 1 electrical under the bridge of the desk. An additional electrical under the credenza and another on an open wall.

**AREA:** 120 sqft.

# SIDELITE DOOR STRIPING FILM

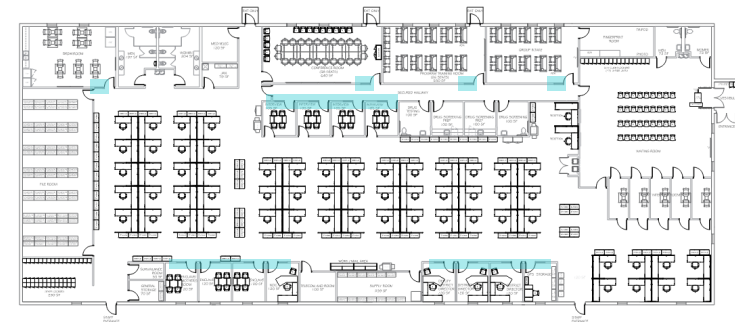
## DETAIL H DOOR STRIPING FILM



7'-0" DOORS - START FILM @ 2'-0" AFF. END FILM @ 5'-6" OR NEXT FULL BAND.

8'-0" DOORS - START FILM @ 2'-0" AFF. END FILM @ 6'-2" OR NEXT FULL BAND.

9'-0" DOORS - START FILM @ 2'-6" AFF. END FILM @ 6'-10" OR NEXT FULL BAND.



# TELECOM ROOMS

UPDATED: 03/2024




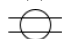
**Shall provide a minimum of 2" conduits (x3) to extend to the property line. The State Service Provider needs to be consulted as they have the legal right to determine where the conduits terminate. Coordinate with state service provider and STS Cabling team.**

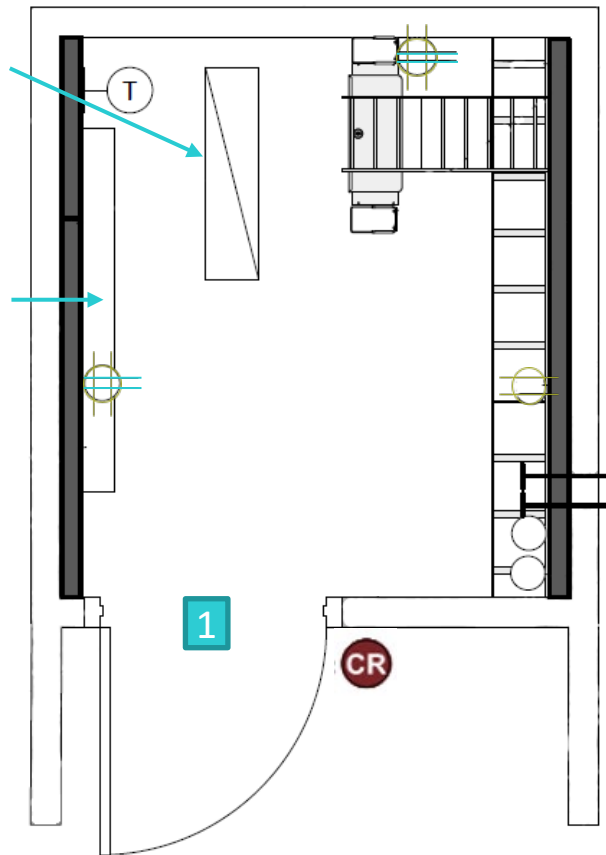
Lighting should be a minimum of 50-foot candles on both sides of the racks.

Stand alone dedicated HVAC Unit appropriately sized according to square footage and heat load. Consult with STS Cabling Department for any questions on size and location. HVAC unit to be mounted on the wall at 8'-6" AFF. Thermostat easily accessible within the room, typically by the door. Unit needs to be operating 24 hours a day, 365 days/ year with no heat.

**NOTE: Air from the HVAC unit must not blow directly at the equipment.**

If fire system sprinklers are provided by Landlords in the telecom room diverters are required to deflect water from damaging equipment.

-  Card reader
-  Thermostat
-  Quad outlet
-  Dual outlet



**ROOM OVERALL:**

- Telecom should be centrally located in secure staff zone
- Must be temperature controlled, cooling only (see note on HVAC)
- Room should be within 200 feet of systems furniture or IT termination point(s)

**Single story buildings**

- Ceiling should be open to deck except where approved by STS and DGS
- Spaces should be designed with adequate pathways or openings through walls and other obstructions into accessible ceiling space.

**Multi-story buildings**

- At least one telecom room per floor
- Must be stacked with the walls extending to the deck
- State will provide necessary plywood backboard
- Provide conduit infrastructure for voice/data and back-boxes
- 1" conduit stubbed up into accessible area in the open access ceiling
- Place outlets according to build out plans, Include pull string and a bushing.

**FLOORING TYPE:** FINISHED CONCRETE

**DOORS:** Must be minimum of 36" wide and open out. Must remain locked at all times.

	TYPE	HARDWARE
1	Solid door with card reader	No interior thumb lock Door closer needed

**WINDOW :** No windows

**ELECTRICAL:**

- Provide (2) dedicated 120v, 20-amp quad outlets. Coordinate location of quads with rack location(s).
- Provide (2) convenience outlets, one on each wall
- Provide 1 #6AWG ground wire from the main electrical panel with 3' of slack coiled up a top of back board.

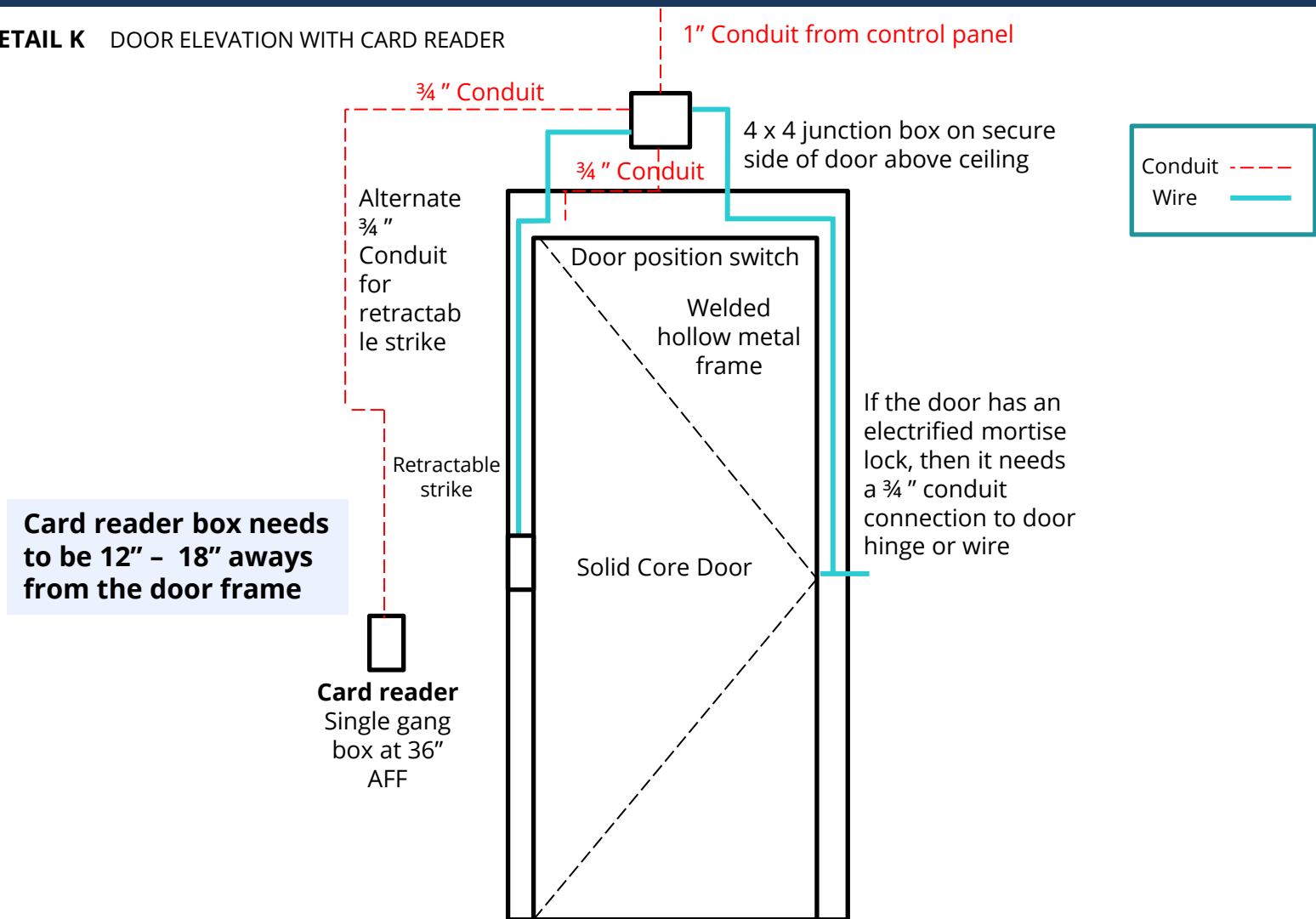
**AREA:**

Space requirements are 8'-0" x 10'-0" sqft. Minimum.

Lessor to provide power for the sound masking control module in the telecom room.

# DOOR ELEVATION WITH CARD READER

**DETAIL K** DOOR ELEVATION WITH CARD READER





# DOOR SCHEDULE

NUMBER	LOCATION	FRAME TYPE	DOOR TYPE	SIDE LITE	LOCKSET	HARDWARE FUNCTION	ACCESS CONTROL	NOTE
1	Building Entrance, Vestibule, Waiting Room Entrance	Welded hollow metal	Store Front /Glass	None	STOREROOM LOCKSET	Panic bar, door closer.	Outside lever locked until a signal is received from the Access Control System. Inside lever always free	Direct to Grand Master (DGM) Key. For use with Access Controls when an Electronic Mortise Lockset is used.
2	Single Occupancy Restrooms, Mother's Rooms	Welded hollow metal	Solid	Full Frosted window for Mother's room, None for Restrooms.	PRIVACY LOCKSET	Door closer	keyed to master outside	Staff can unlock when needed
3	Entrance to Zone 2 and 3 from Waiting Room, Corridor to Zone 3, Conference Room to Zone 3, Small Interview Room, Large Interview Room to Zone 3	Welded hollow metal	Solid	None	STOREROOM LOCKSET	Electronic retractable strike or latch, door closer. Key direct to Grand master	Cardreader	
4	Fee Pay Kiosk	Welded hollow metal	Solid Double Leaf	None	STOREROOM LOCKSET	Door closer, key to fit master		Doors to service fee pay Kiosk
5	Fee Pay Kiosk	Welded hollow metal	Roll-up Corrugated Metal	None	PADLOCK	Lockable		Door accessible to waiting room and to be locked afterhours.
6	Small Interview Room from Zone 1	Welded hollow metal	Solid	Narrow window on door.	PRIVACY LOCKSET	Door closer	keyed to master outside	
7	Drug Screening Prep	Welded hollow metal	Solid	None	PRIVACY LOCKSET	Door closer	keyed to master outside	
8	Drug Screening	Welded hollow metal	Solid	None	PRIVACY LOCKSET	Door closer	Unlock with tool or Key	
9	Fingerprint Room	Welded hollow metal	Solid	None	STOREROOM LOCKSET	Door closer, key to fit master		
10	Conference / Programing to Zone 2	Welded hollow metal	Solid	Frosted striped film. Refer to state requirement on 1.6	CLASSROOM LOCKSET	Outside lever locked or unlocked by key,inside lever always free.	keyed to master outside or individual key.	

# DOOR SCHEDULE

NUMBER	LOCATION	FRAME TYPE	DOOR TYPE	SIDE LITE	LOCKSET	HARDWARE FUNCTION	ACCESS CONTROL	NOTE
11	Exit Only	Welded hollow metal	Metal	None	EXIT ONLY NO RE-ENTRY	Panic bar, door closer. Lockable from outside door closer		Does not open from the exterior. Transition threshold metal with a sweeper brush. Peep hole to look out
12	Large Interview Room to Zone 2, and, Group Intake	Welded hollow metal	Solid	Frosted striped film. Refer to state requirement on 1.6	OFFICE LOCKSET	Door Closer, Lockable	Separate change key	
13	Multi-Stall Bathroom	Welded hollow metal	Solid	None	PUSH/PULL PLATES	Not lockable		or as dictated by code
14	Breakroom	Welded hollow metal	Solid	None	PASSAGE LOCKSET	Not lockable		
15	Telecommunication room	Welded hollow metal	Solid	None	PASSAGE LOCKSET	Lockable	Card reader	Must open out.
16	GPS Storage	Welded hollow metal	Solid	Frosted striped film. Refer to state requirement on 1.6	PRIVACY LOCKSET	Door closer	keyed to master outside	
17	File Room, Supply Storage, Janitor Closet, Electrical, Mechanical Room	Welded hollow metal	Solid	None	STOREROOM LOCKSET	Door closer, key to fit master		
18	Private Offices	Welded hollow metal	Solid	Frosted striped film. Refer to state requirement on 1.6	OFFICE LOCKSET	Lockable	Separate change key	
19	Enclaves	Welded hollow metal	Solid	Frosted striped film. Refer to state requirement on 1.6	PRIVACY LOCKSET	Door closer	keyed to master outside	
20	Staff entrance to enclosed parking	Welded hollow metal	Metal	None	ENTRANCE LOCKSET	Panic bar, door closer.	Card reader	Peep hole on door. Only opens with card reader. Transition threshold metal with a sweeper brush door
<p><b>Note: Refer to state standards for required infrastructure and hardware regarding doors with card readers</b>  <b>When keypads are required, communication shall be between landlord and agency</b></p>								

# RESTROOM ACCESSORIES

## ACCESSORY DISPENSER INFORMATION:

<p><b><u>Paper Towel:</u></b></p>	<p>Georgia-Pacific enMotion® Impulse® 8" Automated Touchless Paper Towel Dispenser 8.580" x 12.700" x 13.800" - Plastic - Black 044628 MFG #: GPC59498A **Hand dryers in place of paper towel in the public facing facilities/restrooms are preferred.</p>
<p><b><u>Soap Dispenser:</u></b></p>	<p>Spartan Lite'n Foamy Soap Dispenser Manual - 1000 ML - Plastic - Black 770803 MFG #: 9757</p>
<p><b><u>Bathroom Tissue Dispenser:</u></b></p>	<p>Georgia Pacific® Professional Jumbo Jr. Bathroom Tissue Dispenser Jumbo Jr. Bathroom Tissue Dispenser, Single Roll, 10.6 x 5.4 x 11.3, - Translucent Smoke 451998 MFG #: GPC59009</p>

# FLOORING SPECIFICATIONS

## FLOORING SPECIFICATION

### **Carpet Tile Specifications:**

Carpet tile must meet the following minimum qualifications:

**Modification Ratio:** 2.1 or less

**Pile Characteristic:** Level-loop, Cut-and-loop pile, Shear-and-loop pile

**Density:** Minimum rating of 5000

**Stitches:** Minimum of 9 stitches per inch

**Gage:** 1/12 inch minimum

**Surface Pile:** 15 oz per square yard or Greater

**TARR Rating:** 3.0 Min. (Heavy to Severe Required) Primary Backing: Non-woven synthetic

**Secondary Backing:** Density (ASTM D-1667): 65 min. lbs./cu ft. +/- 5% Face yarn fully fused to secondary backing system that will not delaminate. No delamination per ASTM D3936

**Dye System:** 100% Solution Dyed

**Size:** Minimum 24" x 24" or 9" x 36"

**Applied Soil Resistance Treatment:** Duratech, Protech, or equal

**Antimicrobial Treatment:** Manufacturers standard material according to AATCC174

### **Luxury Vinyl Tile/Plank Specifications:**

\*Lessor may use LVT/LVP for any or all areas where VCT is specified and must meet the following minimum qualifications:

**Products:** All manufactures to provide LVT/LVP as specified below and in addition to meeting the minimum requirements. Meet ASTM F 1700 13a and/or ISO 10582

**Commercial Grade Luxury Vinyl Tile (LVT/LVP):** Rated for at least a medium to heavy traffic with a minimum of 10 year warranty  
Wear Layer/Top-Coat: 20 mil (0.5mm)

**Overall Thickness of Tile:** 2.0 mm minimum

**Seaming Method:** Standard

**Pattern:** Pattern to be determined by Interior Design Project Manager. (Ashlar, Monolithic, Herringbone etc.) Lessor should plan on up to 3 colors for each area LVT/LVP/VCT are installed with a pattern integration. Use of additional colors will depend on the materials specified

**Width/Size of Tiles:** LVP (Luxury Vinyl Planks) minimum of 6-inch width. LVT (Luxury Vinyl Tiles) at a minimum of 12 x 18

\*\*Consult State's Project Designer for appropriate size based on application for desired space if requesting use of sizes greater than 12x18 tiles. Consultant will provide design pattern for installation areas with finish plan

**Tile Edges:** Squared

**Installation Method:** Per Manufacturer's Recommendations. Concrete subfloors may require a moisture barrier and will be required if product specifies. Flooring may be floated or glued down according to project needs. Adhesives must meet industry and recommended standards per manufacture's recommendations