

WORKMASTER™ UTILITY TRACTORS

WORKMASTER™ 50 | WORKMASTER™ 60 | WORKMASTER™ 70

WORKMASTER™ 55 | WORKMASTER™ 65 | WORKMASTER™ 75

WORKMASTER™ 95 | WORKMASTER™ 105 | WORKMASTER™ 120



Put more value and performance to work in more ways.

Whether you're a small land owner, a mixed-operation producer, livestock farmer or landscape contractor, there's a New Holland WORKMASTER™ Series utility tractor that's right for you. Regardless of horsepower, axle preferences or platform choices, WORKMASTER tractors deliver an outstanding combination of value, simplicity and comfort and reliably handle a wide range of jobs. Your hard-earned money is smartly invested in a WORKMASTER utility tractor.

Which of the nine WORKMASTER utility models is right for you? Break it down by the features you want and how you expect to put the tractor to work, and then compare.

New Holland recommends the use of a FOPS when a tractor is equipped with a loader attachment.





Simple, tough, economical models

If economy and simplicity are paramount — you prefer 2WD or 4WD and consider a mechanical shuttle transmission and a ROPS platform more than capable for your daily chores — choose a **WORKMASTER 50/60/70** tractor producing 45 to 62 PTO hp. And don't be misled by "economy" — these models deliver ample power and feature a durable design to make routine chores and ambitious projects easier.



Comfort-focused, high-productivity models

Want extra comfort and more productivity features, use a loader daily, but still have a keen eye on value? Step up to the **WORKMASTER 55/65/75**, or opt for more power and torque in a **WORKMASTER 95/105/120**. These 40 to 100 PTO hp models offer the best comfort cab available in utility tractors — it's a 4-post design providing outstanding visibility — a clutchless 12x12 power shuttle and the rugged performance of 4WD.

Low operating cost is a competitive advantage

Unlike many competitive engines, WORKMASTER turbocharged three- and four-cylinder engines are designed with simple, maintenance-free emission systems that require no Diesel Particulate Filter (DPF) or regeneration to achieve Tier 4B compliance. Plus, you enjoy the benefit of a long 600-hour service interval, which reduces downtime and saves you even more. All WORKMASTER engines also feature direct injection and high-pressure, common-rail fuel systems for fast response and exceptional efficiency.



So much comfort and visibility, you'll forget it's a value cab.

Increase your productivity with the day-long comfort and all-corners visibility offered by the WORKMASTER™ all-weather cab that's best-in-class among competitive utility tractors. Simple but comfortable, featuring soft-touch materials throughout for a more premium experience, you won't find a value cab designed with more standard features and more sensible ergonomics — anywhere. The value cab is available on WORKMASTER 55/65/75 and 95/105/120 models.

Receive hands-free calls and enjoy your favorite music with **Bluetooth radio and speakers**

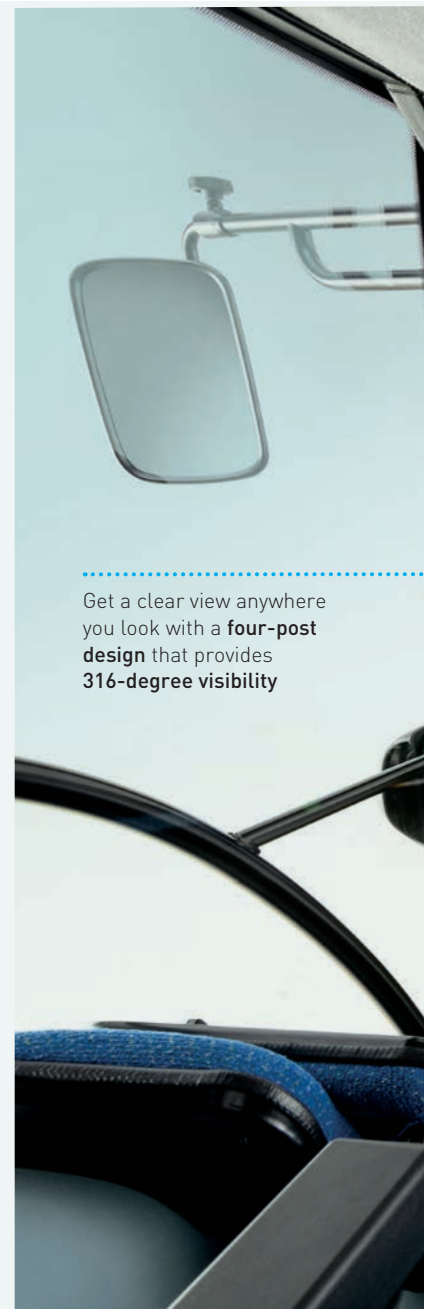


Four cab lights enhance your view at night or in low light

Front and rear wipers and washer clear the way in inclement weather

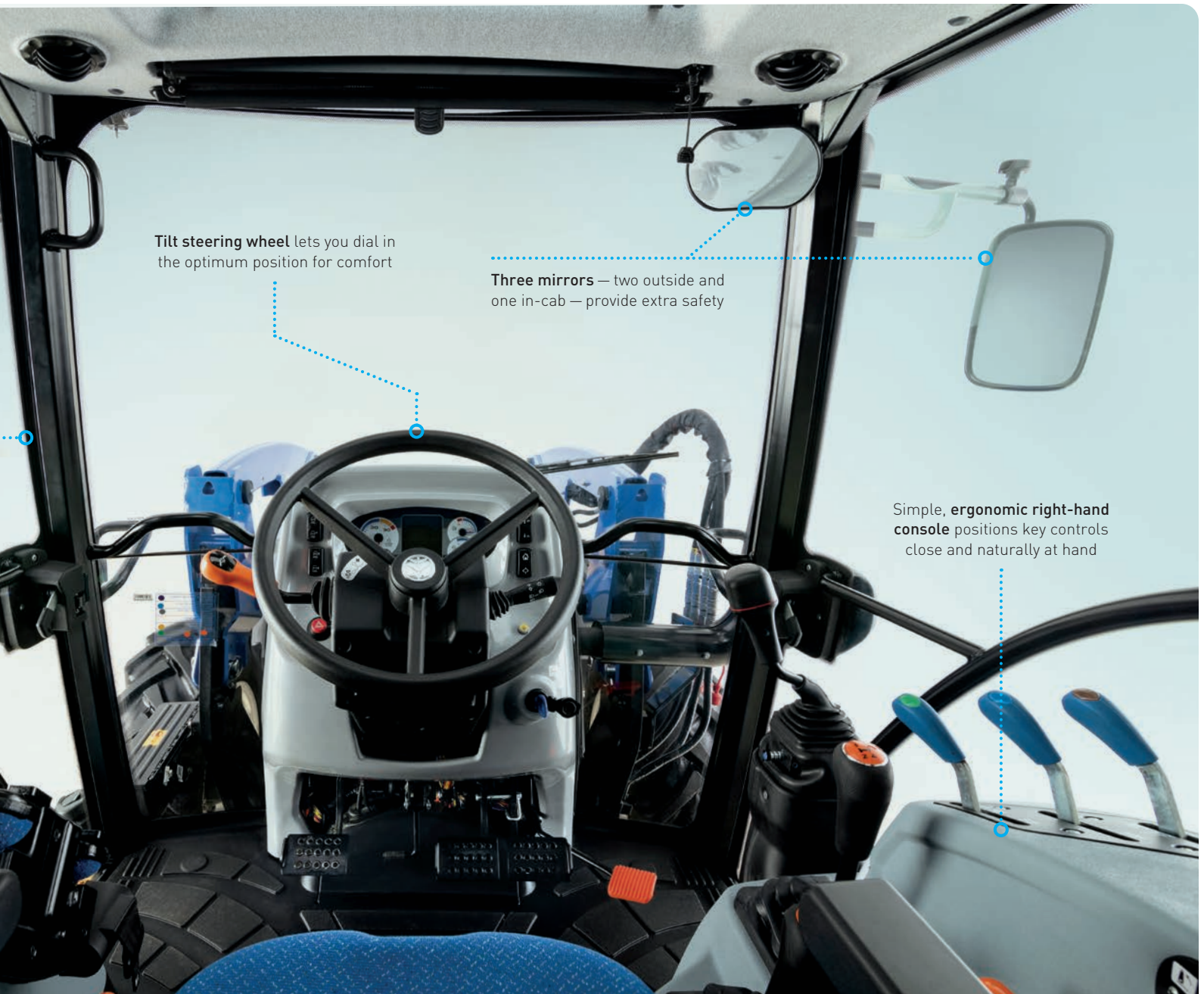


Get a clear view anywhere you look with a **four-post design** that provides **316-degree visibility**



Enjoy comfortable seating for two with a **cloth air-suspension seat and instructor seat** that folds back for additional storage

Wide-entry and flat deck with two doors allow for easy entry and exit and provide extra foot room



Optional **high-visibility panel** on all WORKMASTER™ cab models provides greater visibility, especially when working with a loader.



HVAC system features six roof vents and a blacked-out roof hatch that opens for ventilation.

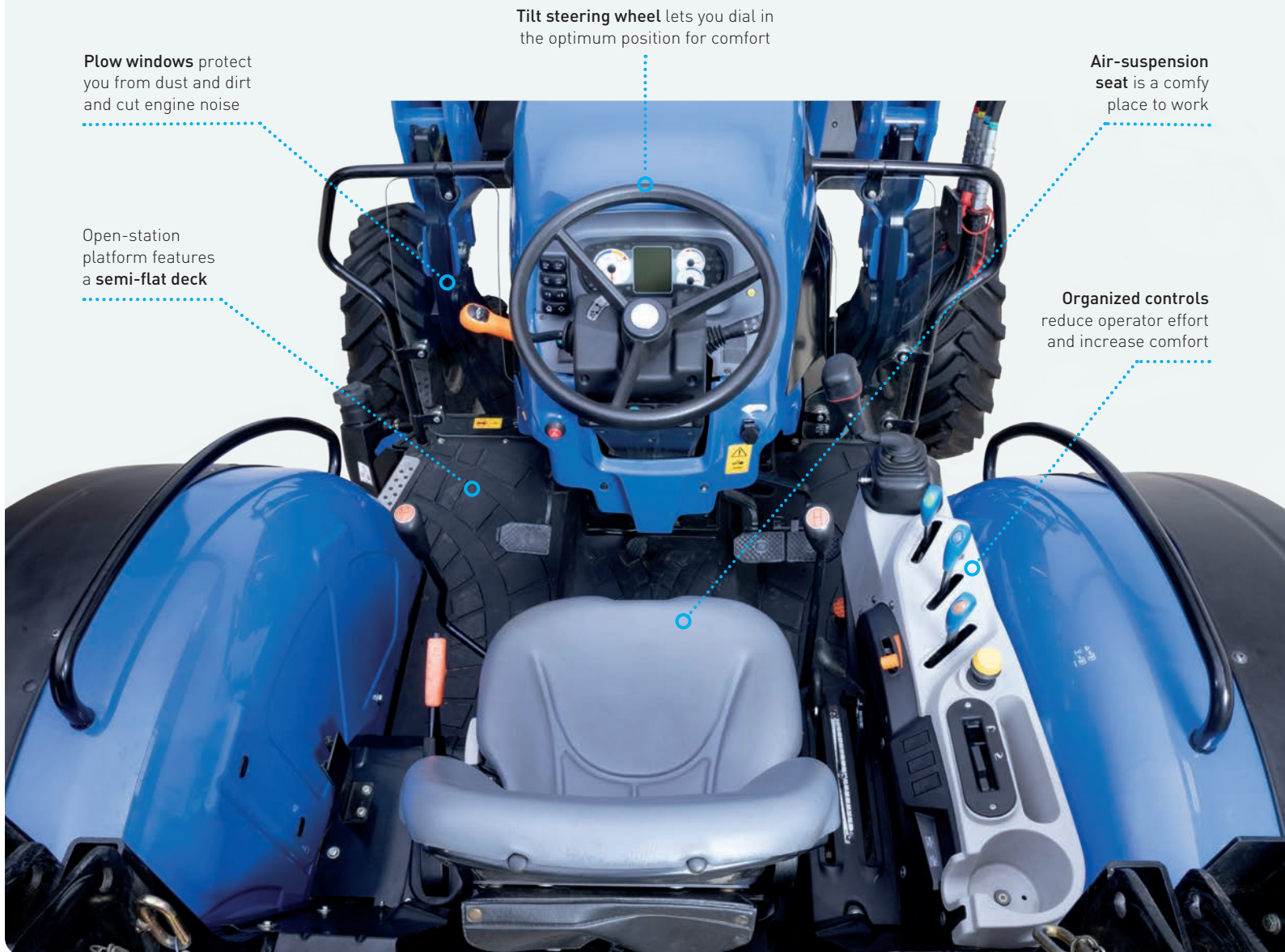
Which open-air ROPS platform is right for you?

New Holland's best-in-class design isn't designated for cab models only. You'll enjoy superior simplicity and comfort with a ROPS deck on a WORKMASTER™ utility tractor.

WORKMASTER 95/105/120 models can be specified in all-purpose and low-profile platform versions featuring a semi-straddle design and a vinyl air-suspension seat. In WORKMASTER 55/65/75 tractors, only the model 75 is available as a ROPS version, but it's a true flat deck. In all models, a right-hand console contains most controls close to the operator, while more commonly used controls are located conveniently up front. The console also contains a cup holder, cell phone slot and two USB ports.

WORKMASTER™ 95/105/120 ROPS — all-purpose

As its name implies, the all-purpose ROPS platform gives you broad capability and versatility. It's an economical option for many jobs.



New Holland recommends that ROPS and FOPS protection always be in place when operating this tractor. When necessary for accessing a height-restricted environment such as a poultry house, the ROPS can be lowered to allow entrance and exit, and easily raised while operating within.

Two-post foldable ROPS permits access to low-clearance environments*



WORKMASTER 95/105/120 ROPS — low-profile

This model combines the all-purpose platform with special low-profile tires to reduce overall vehicle height. It accommodates tire sizes up to 16.9-30 R1 and is designed to allow entry into low-clearance barns and still provide optimum clearance for haying applications. All features included in the all-purpose platform carry over to the low-profile version.



WORKMASTER 75 ROPS — no-straddle deck

The WORKMASTER 75 is available as a ROPS version. It features a true flat-deck platform for exceptional room and operator comfort. Long fender and frame-contoured grab rails allow easy entry/exit. This model is equipped with most of the features packaged on the 95–120 Series, including tilt steering, organized controls and plow windows. A mechanical vinyl seat is standard.

WORKMASTER 50/60/70 ROPS — uncluttered platform

From the clear path to the seat to perfectly placed controls, the WORKMASTER 50–70 ROPS platform is designed to make long days more comfortable and productive. The deluxe contoured suspension seat adjusts to match operator height. Controls are conveniently dash-mounted and at your side. Bright, integrated analog/digital gauges allow you to easily monitor tractor status.

Economy models built to handle tough work every day.

WORKMASTER™ 50/60/70 utility tractors help you handle a wide variety of chores, including mowing, loading and baling. Available in 45, 51 and 62 PTO hp and in 2WD or 4WD, these economy models save you time with their versatility and easy operation. They also feature a sloped hood, rounded fenders and sleek, curved lighting for unsurpassed sightlines in all directions. Great looks and high utility, all in one.



Responsive power

Turbocharged, three-cylinder WORKMASTER engines produce more torque for more responsive power when under load, like mowing tall grass or digging into a packed pile of material with a loader. Tier 4B emissions-compliant, they're also approved to run on B7 biodiesel blends, giving you greater fuel flexibility.



Multi-task master

Open-center hydraulic system with dual hydraulic pumps gives you fast response and plenty of power for steering and implement control. Three-point hitch lift capacity of 2,701 pounds (24 inches behind ball ends) lets you take on bigger implements to make short work of any job. An independent 540-rpm PTO keeps three-point implements engaged even when you change gears, turn or clutch. All three models feature flexible link ends, telescoping stabilizers and a swinging drawbar to make implement hookup a snap.



Convenient synchronized shuttle

You'll find the speed you need to match any task with this 8x8 transmission. Shuttling from forward to reverse is simple and fast. The shuttle lever is on the dash directly under the left-hand side of the steering wheel, so your right hand is free to operate a loader. With operation this smooth, you'll cruise through chores and be ready to tackle your next big project.

Fast routine service

Check engine oil using the provided dipstick without even raising the hood. The one-piece hood glides open on a gas strut for instant access to other service areas without cumbersome panels or grills to remove. The fuel tank is protected under the hood and easy to fill from the ground or the operator platform.



2WD or 4WD

WORKMASTER 50/60/70 tractors are available with economical 2WD axle for applications that don't require all-wheel traction, or 4WD axles for added grip and improved performance in slippery, challenging conditions or uneven terrain. They also give you a choice of R1 agricultural tires, R3 turf tires or R4 industrial tires, so you can match tire attributes to the tasks you need to accomplish.

More comfort and performance features increase your productivity.

If you need more horsepower, the traction of 4WD and a power shuttle for regular loader work, consider a **WORKMASTER™ 55/65/75** tractor. These utility tractors check all the boxes and then some. (For information on the all-weather cab or ROPS features, see pages 4-7.)



Powerful yet efficient

Power is generated by compact, high-performance three-cylinder engines that provide high torque for tackling difficult tasks and conditions. They meet Tier 4B emissions standards without added fluids or operator intervention by using exhaust gas recirculation (EGR) and a maintenance-free diesel oxidation catalyst (DOC) only. Long, 600-hour service intervals reduce your maintenance costs and downtime. The wet clutch 540-rpm power take off (PTO) operates at a low 1,960 engine rpm to conserve fuel and maximize your efficiency with any implement or attachment.



The 4WD advantage

Engage the 4WD front axle electronically using a simple rocker switch and get added traction on demand for slippery, uneven conditions. The axle is ruggedly built, with a 6,500-pound dynamic capacity. Depress both brake pedals and 4WD engages automatically for added stopping power and better control.

Hitch lift capacity up to 4,000 lbs.

A 3,500-pound standard rear hitch lift capacity lets you handle large implements. Add the optional auxiliary lift ram to increase capacity to 4,000 pounds. Flexible link ends and telescopic stabilizers make implement hookup a breeze. The Lift-O-Matic rear hitch control allows you to quickly raise and lower the hitch for fast, smooth headland turns.



Finish tasks faster

The 12x12 hydraulic power shuttle transmission provides four synchronized gears in three synchronized ranges, and a 25-mph (40-kph) travel speed. The shuttle lever is mounted on the left-hand side of the steering column for easy fingertip access during jobs that require frequent forward-reverse shifting, like loading, grading and mowing.



Dual-pump hydraulics

The reliable hydraulic system combines a 12.6-gallon-per-minute (gpm) implement pump and a 7.6-gpm steering pump to deliver the hydraulic power you need for remotes, a three-point hitch and a loader. New Holland color codes the in-cab hydraulic control levers and rear remotes so you can easily identify the correct lever. The remote couplers are located toward the left side at the rear of the tractor, so there's no need to reach over the implement for hookup. Two rear remotes are standard equipment, with a third available as an option. A two-function mid-mount valve and joystick come as standard equipment.

Step up to more power and all-around capability.

Need the most power and heavy-duty performance New Holland offers in a value utility tractor? Then a **WORKMASTER™ 95/105/120** are your go-to models. From seasonal haymaking to daily loader work, they're up to any challenge. (For information on the all-weather cab or ROPS features, see pages 4-7.)



More power and torque

A 207-cubic-inch (3.4L), 4-cylinder engine built by Fiat Powertrain Technologies (FPT) power these WORKMASTER models. They provide exceptional fuel economy and achieve maximum power at a mere 1,800 rpm that is available up to 2,300 rpm. A flatter torque curve throughout the optimum range provides you with operational flexibility. ECOBlue™ Compact HI-eSCR system with light CEGR (Cooled Exhaust Gas Recirculation) — all encapsulated under the hood — achieves Tier 4B compliancy and provides excellent visibility and clearance around the sides of the tractor. The hydraulically engaged 540-rpm power take-off (PTO) operates at a low 1,960 engine rpm to conserve fuel and maximize your efficiency with any implement or attachment. For further efficiency, a 540E PTO operates at just 1,535 engine rpm, while the 1,000-rpm PTO operates at a low 2,125 engine rpm.

ECOBBlue™ HI-eSCR2





High-productivity power shuttle

The 12x12 hydraulic power shuttle transmission provides four synchronized gears in three synchronized ranges, and a 19-mph (30-kph) travel speed. The shuttle lever is mounted on the left-hand side of the steering column for easy fingertip access during jobs that require frequent forward-reverse shifting, like loading, grading and mowing. All transmissions come creeper-ready — your local dealer can hook up the creeper with an optional creeper completing kit.



Up to 6,200-lbs. hitch lift capacity

A 3,200-pound standard rear hitch lift capacity lets you handle large implements. Add the optional auxiliary lift ram to increase capacity to 6,200 pounds. Flexible link ends and telescopic stabilizers make implement hookup a breeze. The Lift-O-Matic rear hitch control allows you to quickly raise and lower the hitch for fast, smooth headland turns.

Extra traction and braking performance

Engage the 4WD front axle electronically using a simple rocker switch for added traction-on-demand for slippery, uneven conditions. The axle is ruggedly built, with a 9,300-pound dynamic capacity. Depress both brake pedals and 4WD engages automatically for added stopping power and better control.

Faster loader cycle times

The reliable dual-pump hydraulic system combines a 16.9-gallon-per-minute (gpm) implement pump and a 9.7-gpm steering pump to deliver the hydraulic power you need for remotes, three-point hitch and loader. An optional 21.6-gpm implement pump is available for operations that demand higher flow. Remotes and control levers are color-coded with remote couplers on the left-hand side of the tractor for ease of use and hydraulic hookup. Two rear remotes are standard equipment, with a third available as an option. A two-function mid-mount valve and joystick are available for loader operation.

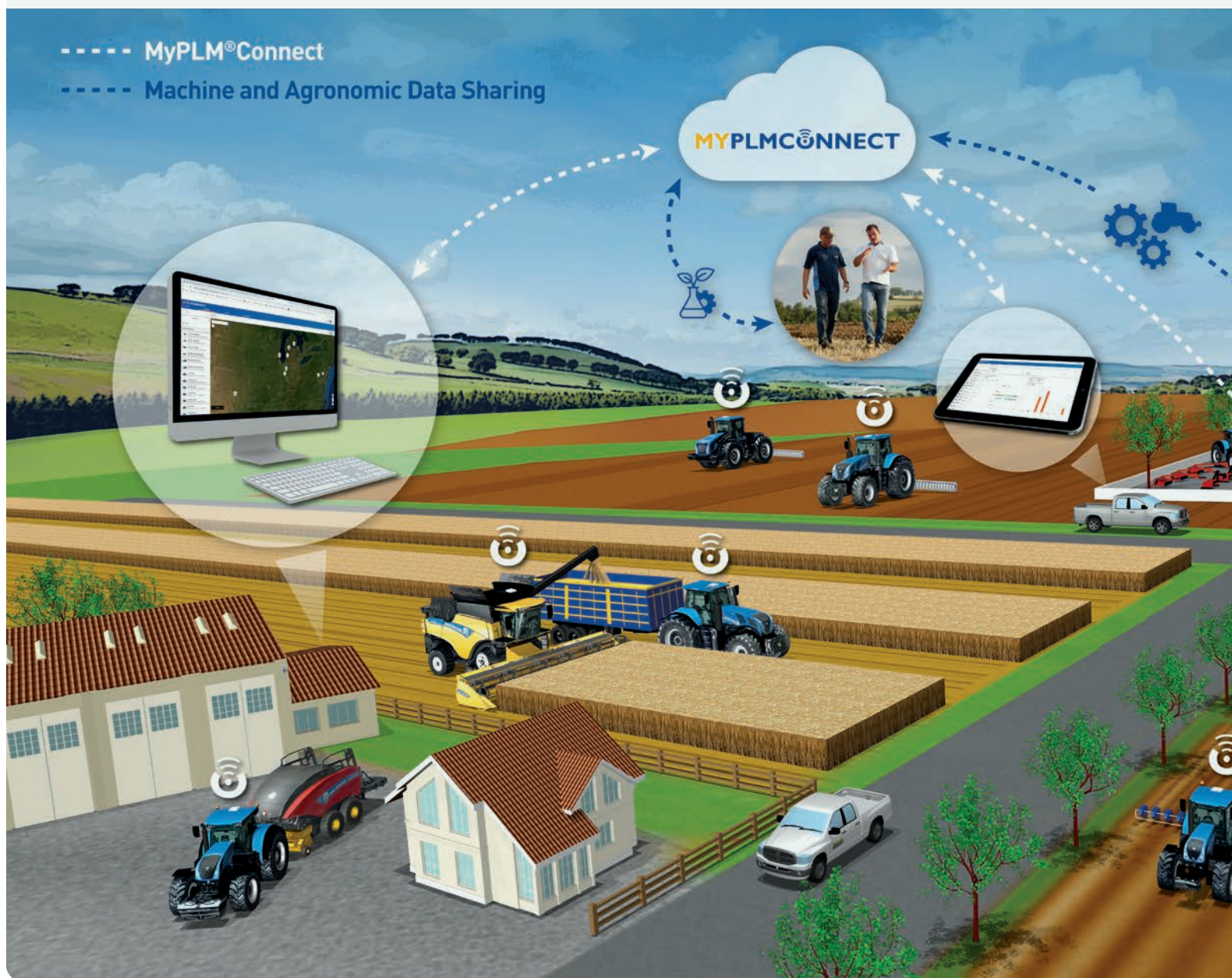


Precision Land Management technology guides you to even higher productivity.

New Holland's Precision Land Management (PLM™)—or Precision Farming—offering is available for nearly every piece of equipment and application, including select WORKMASTER™ utility tractors. With solutions ranging from basic to the most advanced on the market, the only question is finding the right PLM™ option for your operation.

Telematics connects you to performance

MyPLM™Connect can be utilized on any self-power machine regardless of brand. At minimum, it can track hours of operation (to manage preventive maintenance, extend the life of the machine and ensure it is fully functional when you need it), show equipment location, and alert you if machines are operating outside of an approved area or timeframe. On more sophisticated equipment, MyPLM™Connect can be integrated to identify machine efficiencies, share agronomical data and increase dealership support.



Guidance is the foundation

Guidance is one of the first PLM™ solutions, and for good reason: As one of the most basic forms of precision, it is the foundation that precision farming relies on for its more advanced technologies. New Holland offers a wide array of guidance solutions, from manual to full hydraulic. They are a sensible way to begin your pathway in PLM™ as many entry-level products provide fast return on investment in inputs, time and fuel, as well as making the equipment easier to operate in often-challenging tasks. Entry-level guidance is also easily upgradeable, so you can take advantage of mapping, section and/or rate control, while improving consistency.



Your New Holland dealer is your complete PLM™ solution provider

New Holland's PLM™ offering is available in a full line of factory-fit and aftermarket solutions from New Holland and New Holland's trusted partners. So, regardless of the size of your operation or its needs, you can turn to your local New Holland dealer for the right precision farming solution.



New Holland's approach to PLM™ can be summed up in four words: **Open, Connected, Smart, Supported.** The goal: to make New Holland equipment even easier to own and operate—and to make you even more productive.

Add even more utility to your WORKMASTER™ tractor.

For a value tractor, WORKMASTER™ utility tractors don't shy away from the demands of heavy-duty loader work. Depending on the model, you can choose from factory-installed, fully integrated front loaders or opt for a custom loader. These loaders extend the already considerable capabilities of your WORKMASTER tractor.

Add an integrated loader on WORKMASTER 55/65/75 and 95/105/120 tractors

These New Holland loaders are designed and installed at the factory for a perfect fit. 550LU and 555LU front loaders (WORKMASTER 55/65/75) and 632TL and 637TL front loaders (WORKMASTER 95/105/120) fit low over the hood, enhancing your visibility and operating confidence. To improve your visibility to a raised loader bucket, your dealer can replace the blacked-out panel with a clear high-visibility panel in cab models. An ergonomically designed joystick and two-function mid-mount valve ease loader operation. Dealer-installed accessories include a third function diverter valve for use with attachments such as a grapple bucket, and a suspension system for operating over rough terrain. A 72-inch bucket with either SSL or Euro-style quick attach is standard on the WORKMASTER 55/65/75. An 84-inch bucket is standard with the 632TL on the WORKMASTER 95/105/120.



Model		550LU	555LU	632TL	637TL
Loader type: (NSL) Non Self-leveling (MSL) Mechanical Self-leveling		NSL	MSL	NSL	MSL
Maximum lift height @ pivot pin	in. (mm)	131.3 (3335)	130.0 (3302)	134.5 (3415)	134.5 (3415)
Lift capacity @ 800 mm from bucket pivot pin to max height	lbs. (kg)	2,425 (1100)	3,153 (1430)	2028 (920)	3174 (1,440)
Dump clearance @ 45 degrees	in. (mm)	98.2 (2495)	98.2 (2495)	98.4 (2500)	98.4 (2500)
Digging depth	in. (mm)	7.0 (180)	7.0 (180)	5.1 (130)	5.1 (130)
Reach @ max lift at 45 degrees	in. (mm)	24.7 (627)	41.5 (1055)	37.8 (960)	37.8 (960)
Reach @ ground level	in. (mm)	86.8 (2205)	80.9 (2055)	87.4 (2200)	87.4 (2200)
Bucket rollback angle	degrees	42	42	40	40
Bucket dump angle	degrees	58	61	53	53

Add a custom loader on WORKMASTER™ 50/60/70 tractors

Add a 600TL Series front loader and discover the additional capabilities of your WORKMASTER 50, 60 or 70 tractor, including up to 122 inches of lift height and over 3,500 lbs. of breakout force. Quick-attach design makes it easy to hook up, remove or switch buckets and attachments.



Model		611TL	621TL	616TL	626TL
Loader type: (NSL) Non Self-leveling (MSL) Mechanical Self-leveling		NSL	NSL	MSL	MSL
Lift height	in. (mm)	112 (2850)	119 (3030)	115 (2920)	122 (3110)
Lift capacity to 59" (1.5M) @ 800 mm from pivot pin	lbs. (kg)	2,359 (1070)	2,778 (1260)	2,623 (1190)	3,130 (1420)
Breakout force @ 800 mm in front of pivot pin	lbs. (kg)	2,998 (1360)	3,086 (1460)	3,130 (1420)	3,527 (1600)
Bucket rollback angle	degrees	27	27	32	45
Bucket dump angle	degrees	43	42	46	46

WORKMASTER 95/105/120 HAYTOOL COMPATIBILITY:

FIND THE RIGHT EQUIPMENT COMBINATION

SERIES	Minimum Requirements		WORKMASTER™ Utility Tractors		
	PTO HP	Cab	WM95 78 PTO HP	WM105 92 PTO HP	WM120 100 PTO HP
Disc Mowers					
HM234 - 4 disc / 5'6"	35	✓	●	●	●
HM235 - 5 disc / 6' 8"	40	✓	●	●	●
HM236 - 6 disc / 7' 10"	50	✓	●	●	●
DuraDisc™ 107M - 5 disc / 6' 8"	45	✓	—	—	●
DuraDisc™ 108M - 6 disc / 7' 10"	55	✓	—	—	●
DuraDisc™ 109M - 7 disc / 9' 2"	60	✓	—	—	●
DuraDisc™ 210M - 8 disc trailed/ 10' 4"	60	✓	—	—	●
Discbine® Disc Mower-Conditioners					
Model 209 Side-Pull - 7 disc / 9' 3"	65	✓	●	●	●
Model 210 Side-Pull - 8 disc / 10'4"	80	✓	—	●	●
Model 310 Center Pivot - 8 disc / 10'4"	82	✓	—	●	●
Model 312 Center Pivot - 9 disc / 11' 6"	87	✓	—	●	●
Model 313 Center Pivot - 8 disc / 13'	90	✓	—	●	●
Model 316 Center Pivot - 10 disc / 16'3"	100	✓	—	—	●
Hay Tedders					
ProTee™ 3417 - 4 rotor / 17'1"	20	—	●	●	●
ProTee™ 3625 - 6 rotor / 24' 11"	50	—	●	●	●
Hay Rakes					
Rolabar® 230 Twin Basket Rake	65	—	—	—	—
ProRotor™ 3114 - Single Rotor Side Delivery	20	—	●	●	●
ProRotor™ 3223 - Twin Rotor Side Delivery	50	—	●	●	●
ProRotor™ 3226 - Twin Rotor Center Delivery	50	—	●	●	●
ProCart™ 819 - 8 wheel	30	—	●	●	●
ProCart™ 1022 - 10 wheel	35	—	●	●	●
ProCart™ 1225 - 12 wheel	50	—	●	●	●
ProCart™ 1225 PLUS - 12 wheel	50	—	●	●	●
ProCart™ 1428 PLUS - 14 wheel	60	—	●	●	●
Small Square Balers					
BC5060 - 14" x 16" bale	62	—	●	●	●
BC5070 - 14" x 16" bale	75	—	●	●	●
BC5070 Hayliner® Commercial - 14" x 16" bale	75	—	—	●	●
Model 72 Bale Thrower [Not Hayliner Compatible]	—	—	—	—	—
RF Series Fixed Chamber Round Balers					
RF440 Utility - 4'x4'	40	—	●	●	●
RF450 Utility - 4'x5'	50	—	●	●	●
RF450 Super Feed™ - 4'x5' Rotary Feeder	85	—	●	●	●
Roll-Belt™ Variable Chamber Round Balers					
Roll-Belt 450 Utility - 4'x5'	40	—	●	●	●
Roll-Belt 450 Dry Hay - 4'x5'	60	—	●	●	●
Roll-Belt 460 Dry Hay - 4'x6'	70	—	●	●	●
Manure Spreaders					
Model 145/155 (110 cu. Ft.)	40-50	—	●	●	●
Model 155 (132 cu. Ft.)	60-75	—	●	●	●
Model 165 (156 cu. Ft.)	70-80	—	—	●	●
Model 185 (170 cu. Ft.)	80-85	—	—	—	●

● Standard — Not available



Model		WORKMASTER 50	WORKMASTER 60	WORKMASTER 70
Engine				
Make		FPT - R753	FPT - R753	FPT - R753
Type		Turbocharged 3-cylinder diesel	Turbocharged 3-cylinder diesel	Turbocharged 3-cylinder diesel
Displacement	cu. in. (L)	136 (2.2)	136 (2.2)	136 (2.2)
Gross engine horsepower		53	60	70
PTO horsepower		45	51	62
Rated Engine Speed	rpm	2600	2600	2600
Emissions		Tier 4B Final	Tier 4B Final	Tier 4B Final
Transmissions				
Standard		8X8 Gear	8X8 Gear	8X8 Gear
3-Point Hitch				
Lift capacity @ 24"	lbs. (kg.)	2701 (1225)	2701 (1225)	2701 (1225)
Optional ram @ 24"	lbs. (kg.)	—	—	—
Hydraulics				
Rear remotes		1 standard / 2 optional	1 standard / 2 optional	1 standard / 2 optional
Imp. pump	gpm (L/min)	12 (45)	12 (45)	12 (45)
Service pump	gpm (L/min)	5.5 (21)	5.5 (21)	5.5 (21)
PTO				
Base PTO	rpm	540	540	540
Dimensions*				
Weight - Cab/4WD	lbs. (kg.)	—	—	—
Weight - ROPS/4WD	lbs. (kg.)	5059 (2995)	5059 (2995)	5059 (2995)
Overall height - Cab roof	in. (mm)	—	—	—
Overall height - top of ROPS	in. (mm)	97.6 (2479)	97.6 (2479)	97.6 (2479)
Overall length - 4WD	in. (mm)	134 (3404)	134 (3404)	134 (3404)
Wheelbase 4WD - Cab	in. (mm)	—	—	—
Wheelbase 4WD - ROPS	in. (mm)	77.6 (1970)	77.6 (1970)	77.6 (1970)

— Not available *14.9x28 rear tires (WM50/60/70) *16.9x30 rear tires (WM55/65/75)

CAB AND ALL-PURPOSE ROPS

Model		WORKMASTER 95	WORKMASTER 105	WORKMASTER 120
Engine				
Make		F5	F5	F5
Type		Turbocharged 4-cylinder diesel	Turbocharged 4-cylinder diesel	Turbocharged 4-cylinder diesel
Displacement	cu. in. (L)	207 (3.4)	207 (3.4)	207 (3.4)
Gross engine horsepower		97	112	120
PTO horsepower		78	92	100
Rated Engine Speed	rpm	2300	2300	2300
Emissions Tier 4B		SCR + CUC	SCR + CUC	SCR + CUC
Transmissions				
Standard		12X12 Power Shuttle	12X12 Power Shuttle	12X12 Power Shuttle
3-Point Hitch				
Lift capacity @ 24"	lbs. (kg.)	3200 (1451)	3200 (1451)	3200 (1451)
Optional ram @ 24"	lbs. (kg.)	6200 (2812)	6200 (2812)	6200 (2812)
Hydraulics				
Rear remotes		2 or 3	2 or 3	2 or 3
Imp. pump	gpm (L/min)	16.9 (64) / 21.6 (82)	16.9 (64) / 21.6 (82)	16.9 (64) / 21.6 (82)
Service pump	gpm (L/min)	9.7 (36)	9.7 (36)	9.7 (36)
PTO				
Base PTO	rpm	540	540	540
Optional PTO	rpm	540/540E	540/540E	540/540E
Optional PTO	rpm	540/1000	540/1000	540/1000
Dimensions*				
Weight - Cab/4WD	lbs. (kg.)	8367 (3795)	8367 (3795)	8367 (3795)
Weight - ROPS/4WD	lbs. (kg.)	7738 (3510)	7738 (3510)	7738 (3510)
Overall height - Cab roof	in. (mm)	105.4 (2676)	105.4 (2676)	105.4 (2676)
Overall height - top of ROPS	in. (mm)	103.0 (2617)	103.0 (2617)	103.0 (2617)
Overall length - 4WD	in. (mm)	161.1 (4091)	161.1 (4091)	161.1 (4091)
Wheelbase 4WD - Cab	in. (mm)	88.9 (2260)	88.9 (2260)	88.9 (2260)
Wheelbase 4WD - ROPS	in. (mm)	83.7 (2125)	83.7 (2125)	83.7 (2125)

*18.4x30 rear tires (cab and all-purpose) *500/60-22.5 R1 rear tires (low-profile rops) **19.5L24 R4 rear tires

WORKMASTER 55	WORKMASTER 65	WORKMASTER 75
S8000	S8000	S8000
Turbocharged 3-cylinder diesel	Turbocharged 3-cylinder diesel	Turbocharged 3-cylinder diesel
179 [2.9]	179 [2.9]	179 [2.9]
54	64	74
40	50	60
2300	2300	2300
Tier 4B CEGR + DOC	Tier 4B CEGR + DOC	Tier 4B CEGR + DOC
12X12 Power Shuttle	12X12 Power Shuttle	12X12 Power Shuttle
3500 [1587]	3500 [1587]	3500 [1587]
4000 [1814]	4000 [1814]	4000 [1814]
2 or 3	2 or 3	2 or 3
12.6 [48]	12.6 [48]	12.6 [48]
7.6 [29]	7.6 [29]	7.6 [29]
540	540	540
6,800 [3100]	6,800 [3100]	6,800 [3100]
—	—	6,250 [2850]
100.2 [2545]	100.2 [2545]	100.2 [2545]
—	—	99.8 [2536]
154.1 [3915]	154.1 [3915]	154.1 [3915]
—	—	83.6 [2123]
83.6 [2123]	83.6 [2123]	83.6 [2123]



LOW-PROFILE ROPS		
WORKMASTER 95	WORKMASTER 105	WORKMASTER 120
F5	F5	F5
Turbocharged 4-cylinder diesel	Turbocharged 4-cylinder diesel	Turbocharged 4-cylinder diesel
207 [3.4]	207 [3.4]	207 [3.4]
97	112	120
78	92	100
2300	2300	2300
SCR + CUC	SCR + CUC	SCR + CUC
12X12 Power Shuttle	12X12 Power Shuttle	12X12 Power Shuttle
3200 [1451]	3200 [1451]	3200 [1451]
6200 [2812]	6200 [2812]	6200 [2812]
2 or 3	2 or 3	2 or 3
16.9 [64] / 21.6 [82]	16.9 [64] / 21.6 [82]	16.9 [64] / 21.6 [82]
9.7 [36]	9.7 [36]	9.7 [36]
540	540	540
540/540E	540/540E	540/540E
540/1000	540/1000	540/1000
7738 [3510]	7738 [3510]	7738 [3510]
68.4 [1738]	68.4 [1738]	68.4 [1738]
43.9 [1115]	43.9 [1115]	43.9 [1115]
71.9 [1828]**	71.9 [1828]**	71.9 [1828]**
47.4 [1205]**	47.4 [1205]**	47.4 [1205]**
161.1 [4091]	161.1 [4091]	161.1 [4091]
83.7 [2125]	83.7 [2125]	83.7 [2125]



VALUE, SERVICE AND SOLUTIONS

There's a certain way of thinking that comes from living on a farm. Farming takes equal parts brain and brawn. Not to mention thick skin, calloused hands and a fair share of know how. Seasoned farmers know it helps to have equipment that's built by farmers, sold by farmers and used by farmers.

Support at every step. When you place your confidence in New Holland agricultural equipment, you get the finest in local support. Your New Holland dealer understands the many challenges you face and stands behind you at every step with the equipment, parts, service and financial solutions to make your job easier. Look to New Holland for a complete selection of equipment, including a full line of tractors, hay & forage equipment, harvesting, crop production and material handling equipment.

Quality parts and service. Turn to your New Holland dealer after the sale for expert, factory-trained service and genuine New Holland-branded parts. Your dealer has the very latest service updates and training to ensure your equipment keeps working productively season after season.

Financing solutions. Your New Holland dealer can tell you about smart ways to turn your financial challenges into opportunities with a portfolio of innovative financial services available through CNH Industrial Capital, including customized financing, leasing, insurance and the purchasing convenience of a Commercial Revolving Account.

For reliable equipment, parts and service — or just honest advice on farming and finance — turn to New Holland and your trusted New Holland dealer. We know. We're farmers, too.



We are proud to support the FFA.

Learn more at www.newholland.com

Design, materials and/or specifications are subject to change without notice and without liability therefor. Specifications are applicable to units sold in Canada, the United States, its territories and possessions, and may vary outside these areas.

© 2021 CNH Industrial America LLC. All rights reserved. New Holland is a trademark registered in the United States and many other countries, owned by or licensed to CNH Industrial N.V., its subsidiaries or affiliates. Any trademarks referred to herein, in association with goods and/or services of companies, other than owned by or licensed to CNH Industrial N.V., its subsidiaries or affiliates, are the property of those respective companies.



Safety begins with a thorough understanding of the equipment. Always make sure you and your operators read the Operator's Manual before using the equipment. Pay close attention to all safety and operating decals and never operate machinery without all shields, protective devices and structures in place.

NH53021119 • 0221 • OTP • PRINTED IN U.S.A.