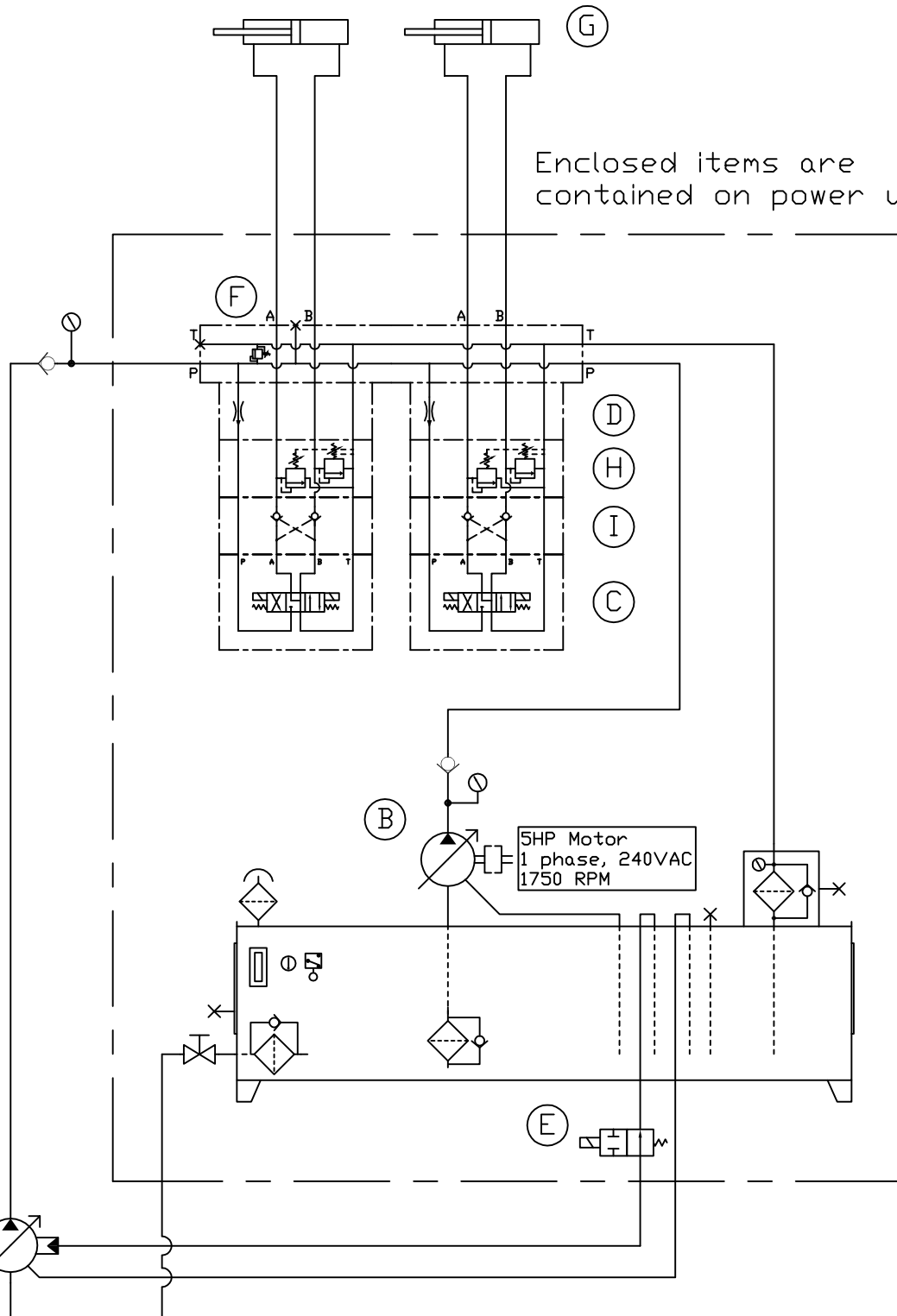


Update 5/22/13
 Hose/Tube/Pipe Size
 (A) Pump
 Pressure=0.75"
 Suction=1.50"
 Case=0.75"

Lines for Cylinder
 A/B=0.75"

Enclosed items are
 contained on power unit



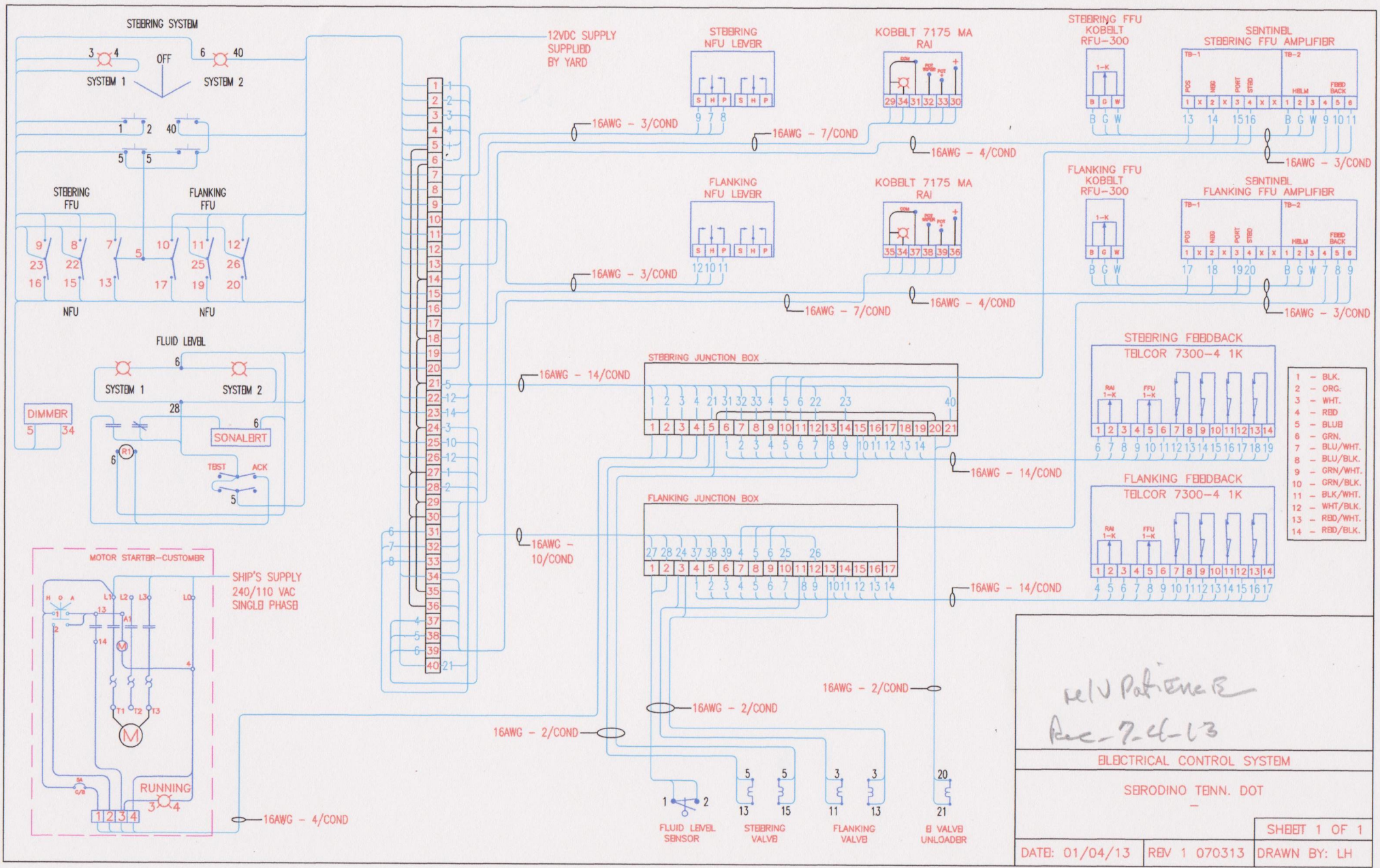
Engine 13T 7/8"shaft
 CCW looking @ coupling
 CW looking @ pump shaft

| BOM | | |
|--------|------------|--|
| A/B | Kawasaki | K3VL28/C-10RSS-P0 B 2 bolt, 13T, 7/8 Shaft CW Rotation, Side Ports |
| C | Argo Hytos | RPE3-063Y11/01200E1 12 Volt DIN Motor Spool |
| D | Hydraforce | FR10-20F-S03P-4.0 4gpm, Pressure Compensated |
| E | Hydraforce | SV08-25M-6T-N-12EG 12 Volt DIN 2 Way, Normal Open Spool |
| F | Hydraforce | RV10-26A-0-N-15 Relief 1500psi max |
| G | Atlas | H-032-PB2-0137-1-NC-S-UH-18.0-S Cylinder 3.25"B, 1.375"R, 18"S |
| H | Hydraforce | RV10-20A-S03W-NC-23/13.0 Relief 1300psi preset |
| I | Hydraforce | DCV08-S03K-N Double PO Check |
| Spares | | |
| 1 | Kawasaki | K3VL28/C-10RSS-P0 B 2 bolt, 13T, 7/8 Shaft CW Rotation, Side Ports |
| 1 | Argo Hytos | Coil for Item C 12 Volt DIN 936-0062 or 16211400 |
| 2 | Atlas | H-032-PB2-0137-1-NC-S-UH-18.0-S Cylinder 3.25"B, 1.375"R, 18"S |

900psi max
 4gpm per valve
 10 seconds from
 hard over to
 hard over

Serodino
 TN DOT
 Feb 2013

Final Drawing



- 1 - BLK.
- 2 - ORG.
- 3 - WHT.
- 4 - RED
- 5 - BLUB
- 6 - GRN.
- 7 - BLU/WHT.
- 8 - BLU/BLK.
- 9 - GRN/WHT.
- 10 - GRN/BLK.
- 11 - BLK/WHT.
- 12 - WHT/BLK.
- 13 - RED/WHT.
- 14 - RED/BLK.

rel V Pot. Enc. B
 Rec-7-4-13

ELECTRICAL CONTROL SYSTEM

SEBRODINO TENN. DOT

SHEET 1 OF 1

DATE: 01/04/13 REV 1 070313 DRAWN BY: LH