

Event 32801-11724 TWRA Normandy Railings and Access Platforms

This event is for fabrication and installation of aluminum safety railings and access platforms (gangway). Bidders are encouraged to visit the job site to inspect the job requirements, the following specifications are estimates. The site contact is Nathan Singer, he can be reached by phone at 931-857-3417 or 615-981-9320. Normandy Fish Hatchery, 380 Huffman Rd, Normandy, TN 37360.

****Please see the attachments on pages 2 and 3.****

Scope of Work:

- 1) **One Reservoir Kettle** – Contractor shall construct and install aluminum railing around the top of the existing concrete kettle. Estimated one hundred forty-two (142) linear feet around kettle for piping and estimated kick plate of fifty (50) linear feet.
 - Railing consists of a top rail and a middle rail of 1 ½” diameter pipe with support piping.
 - Kick plate on the bottom of the railing consists of a 4” high x ¼” thick.
 - Grating supports over open area on kettle top consists of two (2) - I beams that are 6” wide x 10’ long.
 - Grating consists of 3/16” x 1 1-2” on top of I beams, approximately 10’ x 10’.

- 2) **Eight Production Pond Kettles** – Contractor shall construct and install aluminum railing around the top of the existing concrete kettles. Estimated eighty-four (84) linear feet around kettle for piping and estimated kick plate of thirty (30) linear feet for each pond kettle.
 - Railing consists of a top rail and a middle rail of 1 ½” diameter pipe with support piping.
 - Kick plate on the bottom of the railing consists of a 4” high x ¼” thick.

Contractor shall construct aluminum gangway from pond levee to kettle for each pond.

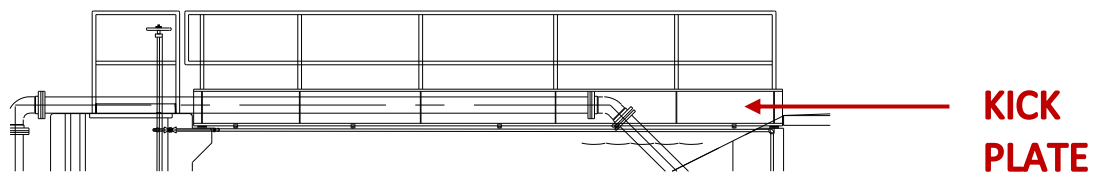
- The gangway shall be 10’ 6” x long x 4’ wide, consisting of a C channel - 10” tall and ¼” thick.
- Grating for the gangway is 3/16” x 1 ½” aluminum.
- Railing and kick plate on each side for each pond.

- 3) **One Effluent Kettle** – Contractor shall construct and install aluminum railing around the top of the existing concrete kettle. Estimated twenty-eight (28) linear feet around kettle for piping and estimated kick plate of twelve (12) linear feet.
 - Railing consists of a top rail and a middle rail of 1 ½” diameter pipe with support piping.
 - Kick plate on the bottom of the railing consists of a 4” high x ¼” thick.

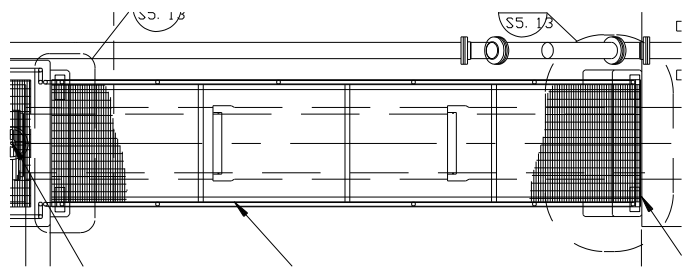
Contractor shall construct aluminum gangway from pond levee to kettle.

- The gangway shall be 18’ x long x 4’ wide, consisting of a C channel - 10” tall and ¼” thick.
- Grating for the gangway is 3/16” x 1 ½” aluminum.
- Railing and kick plate on each side.

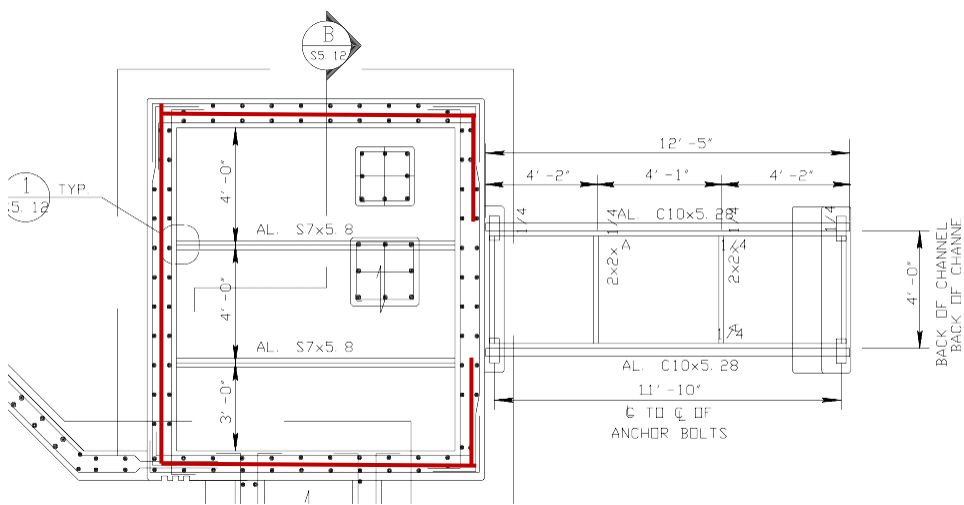
Railing diagram



Grating on gangway



Railing location on top of concrete kettle



Railing location on gangway

