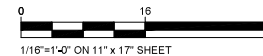


#	Product Number	Product Name	M.F.H.	Count
P	APS-BCORER4	4 ft Plastic Border	00"	84
Q	M87403-xx17	Stepping Pod, 2 ft	111"	2
R	M87402-xx17	Stepping Pod, 1 ft	10"	2
S	CRP250701-CUSTOM_20330781	Custom Spix's Trail	411"	1
T	ELE400065-xx175C	Tipi Carousel w/ Top Brace	111"	1
U	PCM5727908	Custom Triple Wackie Tower	91"	1
V	APS-F-RAMP	ADA Full Ramp	00"	1
W	KSM928-CUSTOM_20330779	Custom Swing	711"	1
X	PCM202-CUSTOM_20331217	Custom Sign	00"	1
Y	MCM163385-ASTM	Custom Seesaw	33"	1
Z	PAR4064-xx09	Agora Bench	00"	2

#	Product Number	Product Name	M.F.H.	Count
A-A1	MCM163326	Custom Cocowave Pendulum Swing	97"	1


**EFW AREA: 5887 SF**  
**PERIMETER: 344 LF**



**MANUFACTURER'S SHOP DRAWING:**

FOR USE BY CONTRACTOR, ENGINEER, OR OTHER PROFESSIONAL OF RECORD. SEE ITEMS SALES PROPOSAL FOR COMPLETE SCOPE TO BE PROVIDED BY KOMPAN OR REPRESENTING AGENCY. CONSTRUCTION PLANS ARE SCOPED WITH KOMPAN SALES REP OR PROJECT MANAGER PRIOR TO USE FOR REVIEW, PERMITTING, OR CONSTRUCTION.

TO BE READ CONJUNCTIVELY WITH KOMPAN'S STANDARDS FOR SITE PREPARATION, MATERIALS AND INSTALLATION PROCESSES. PROVIDED AT THE EQUIPMENT PURCHASER'S COMPANY PLAYGROUND TO VARIANTS STANDARDS MUST SATISFY ALL REQUIREMENTS IN THE CODE OF CONDUCT.

PLEASE NOTE: UNLESS OTHERWISE NOTED, FOR STRUCTURE MOUNT OPTIONS, THE CONCRETE REQUIREMENTS MAY BE UP TO 5% OF 3,500 PSI MINIMUM COMPRESSIVE STRENGTH. CONTACT KOMPAN FOR SPECIFIC PRODUCT REQUIREMENTS. ALL LOAD-BEARING STRUCTURES SHOWN RESISTING A 50 LB SPACE OF 2% MINIMUM PROPORTIONAL SPECIFICATIONS FOR EACH KOMPAN STRUCTURE MAY BE FOUND AT KOMPAN.COM/KOMPANMASTER

DIMENSIONS OF PLAY AREA, SIZE AND ORIENTATION, LOCATIONS OF ALL EXISTING UTILITIES, EQUIPMENT AND SITE FURNISHINGS TO BE FIELD VERIFIED PRIOR TO CONSTRUCTION.

PREPARED AND PRINTED IN USA BY KOMPAN © 2023 KOMPAN, INC. AUSTIN, TX, USA 800-426-0098



SALES REPRESENTATIVE			SHEET	
REVIEW BY	DRAWN BY	DATE	K1.0	
DESIGN	ANDANT	01/13/2025		
REV. NO.	REV. BY	REV. DATE	REVISION NOTES	
5	AdaPur	06/02/2025	Swapped triple tower	

LAYOUT IS IN ACCORDANCE WITH ASTM F408