

Supporting Collaboration and Communication for the Duck River Watershed Partnership

Sunny Fleming, Director for Environment,
Conservation & Natural Resources Solutions

Mike Bialousz, Practice Lead for Environment

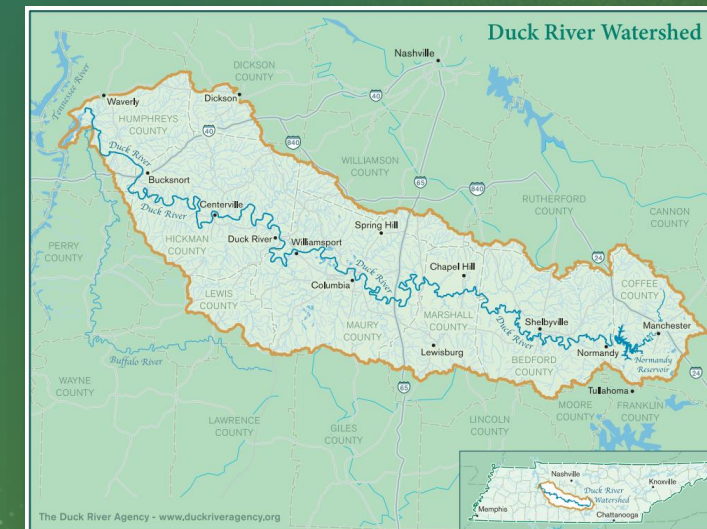
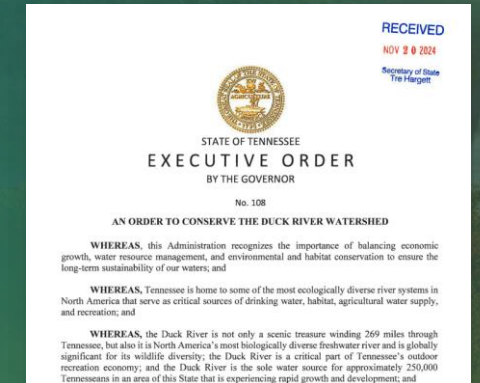
August 14, 2025



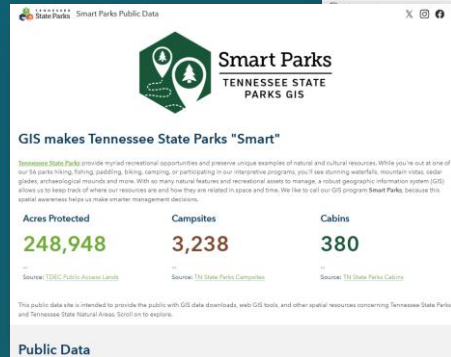
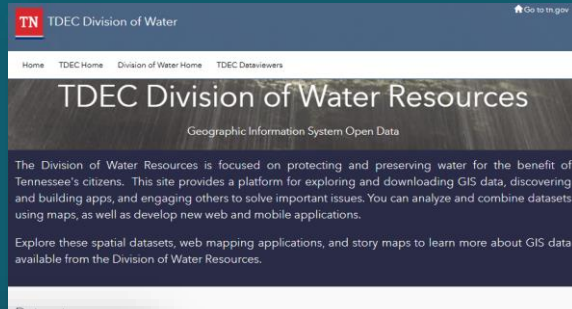
Context from Executive Order 108

Conserve the Duck River Watershed

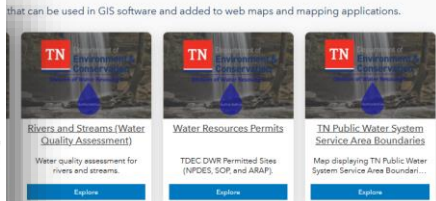
- Collaborative development of strategies for the sustainable management of the Duck River Watershed
- 3 main pillars
 - Regionalization
 - Drought Management
 - Conservation, Water Loss Reduction, Public Education and Engagement
- Intentional and streamlined collaboration is essential



Existing GIS Apps & Data

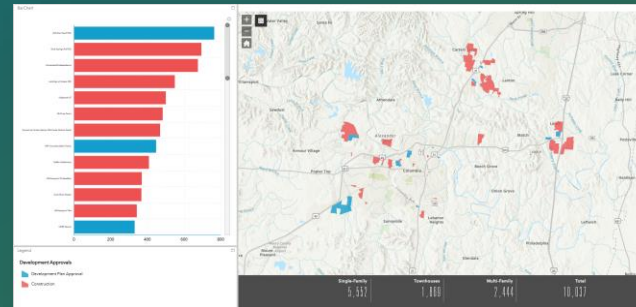


TDEC Smart Parks Data and Apps



TDEC Water Resources Data and Apps

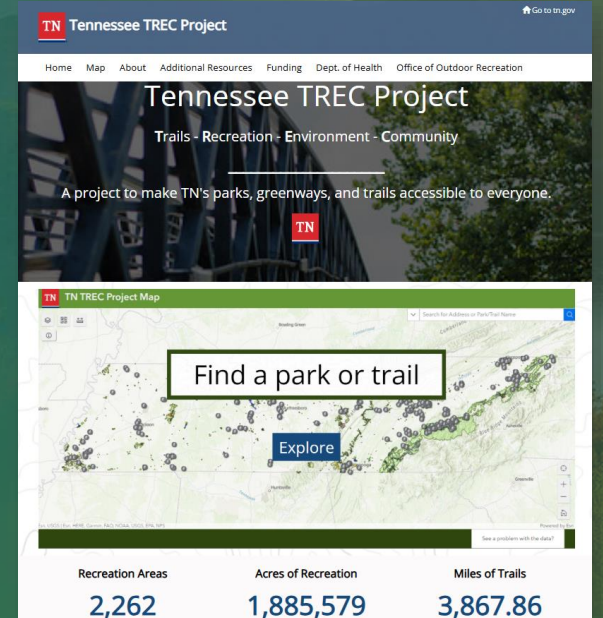
City of Columbia Development Approvals



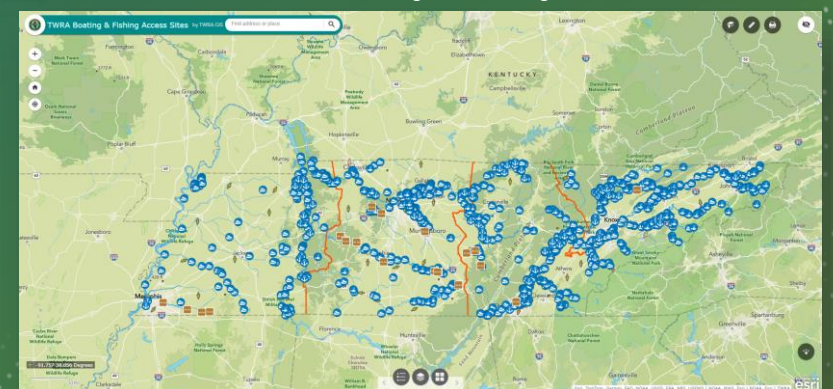
USFWS Service Open Data and Apps



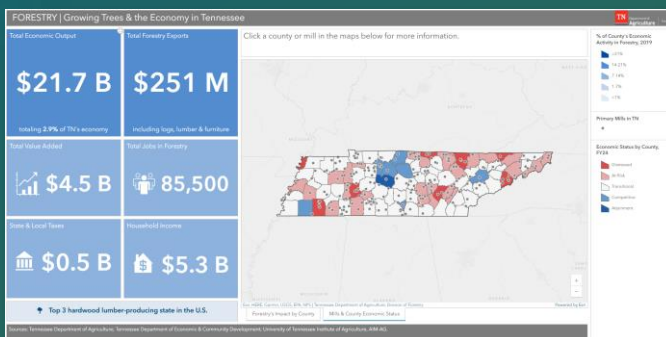
TN Dept. of Health Trails, Recreation, Environment and Community Initiative



TWRA Public Fishing and Boating Access

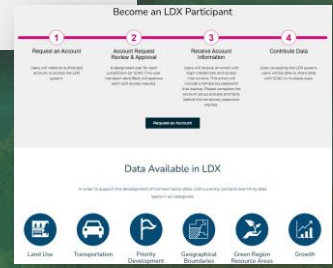
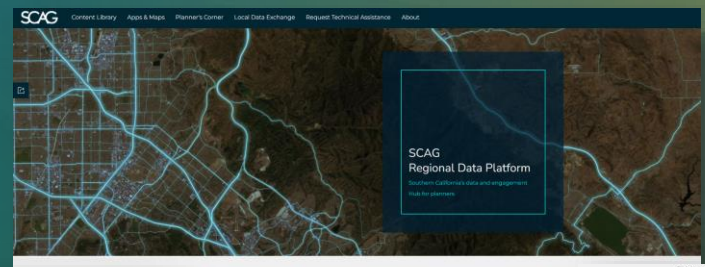
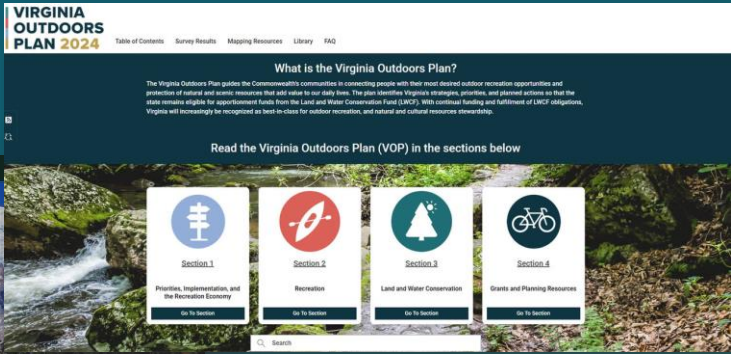


TN Dept. of Agriculture Division of Forestry Economic Impact

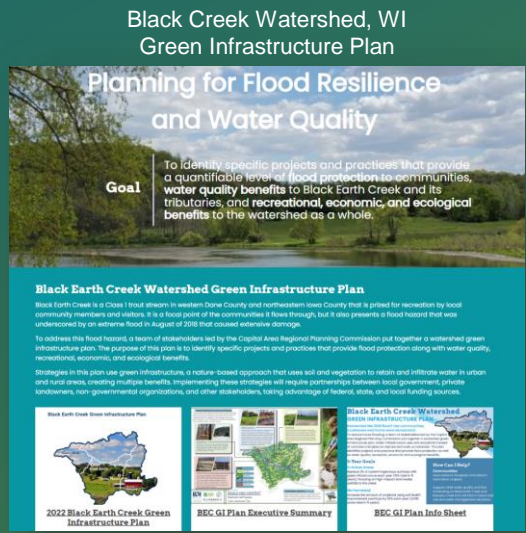


Success Stories: Stakeholder Engagement

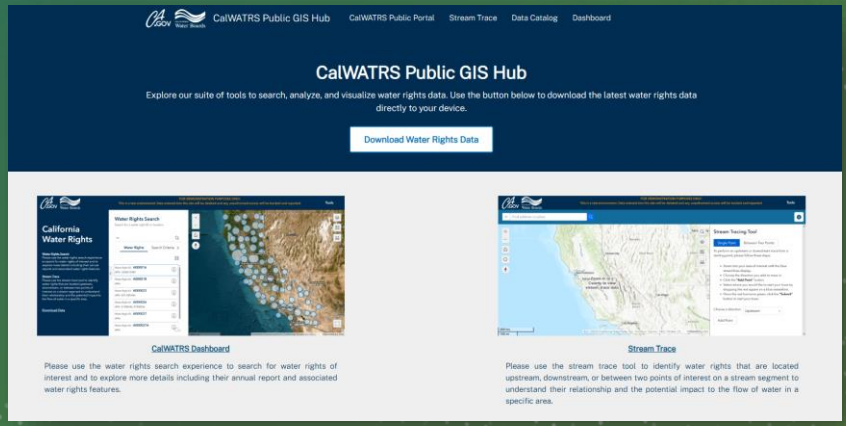
Collaborative SCORP Development & Deployment



East River, WI Watershed Resilience Planning



California Water Rights Permitting Portal

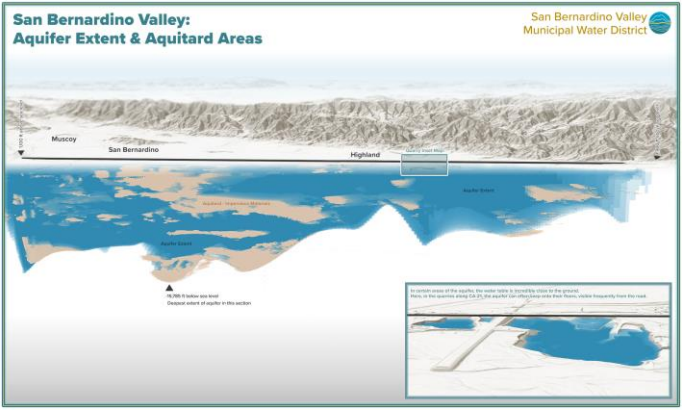


Success Stories: Monitoring & Reporting

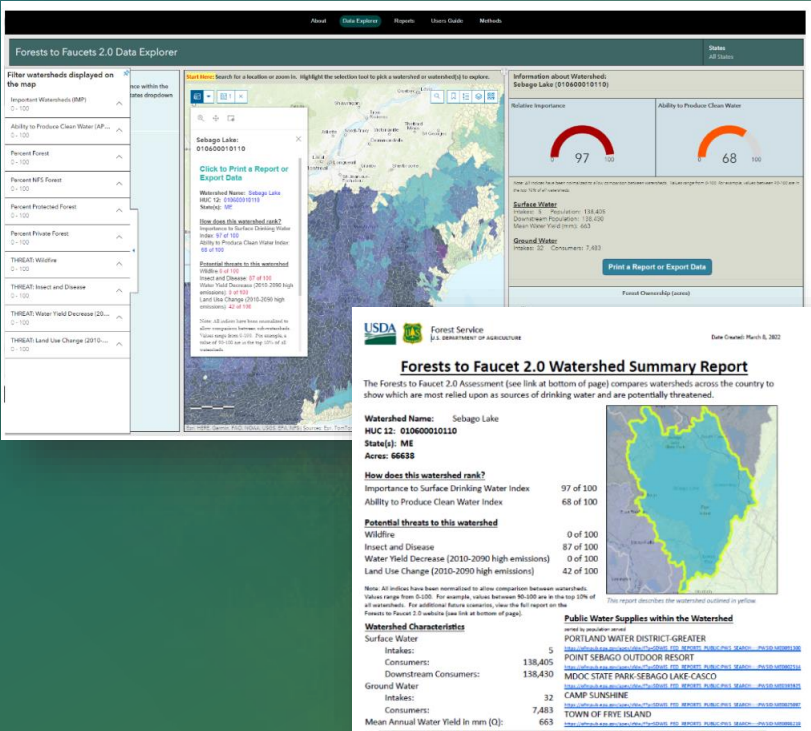
Marana, AZ Aquifer Water Recharge Monitoring



San Bernadino Valley, CA Groundwater Elevation and Lithology



USFS Forests to Faucets Planning and Reporting



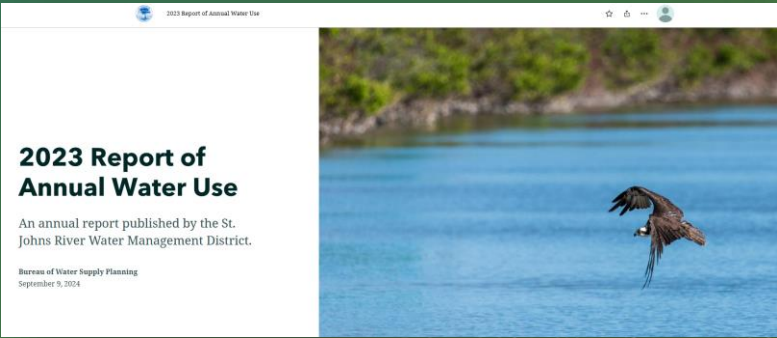
Kentucky Weekly & Monthly Water Resources Reporting



North Dakota DEQ NPDES Annual Report

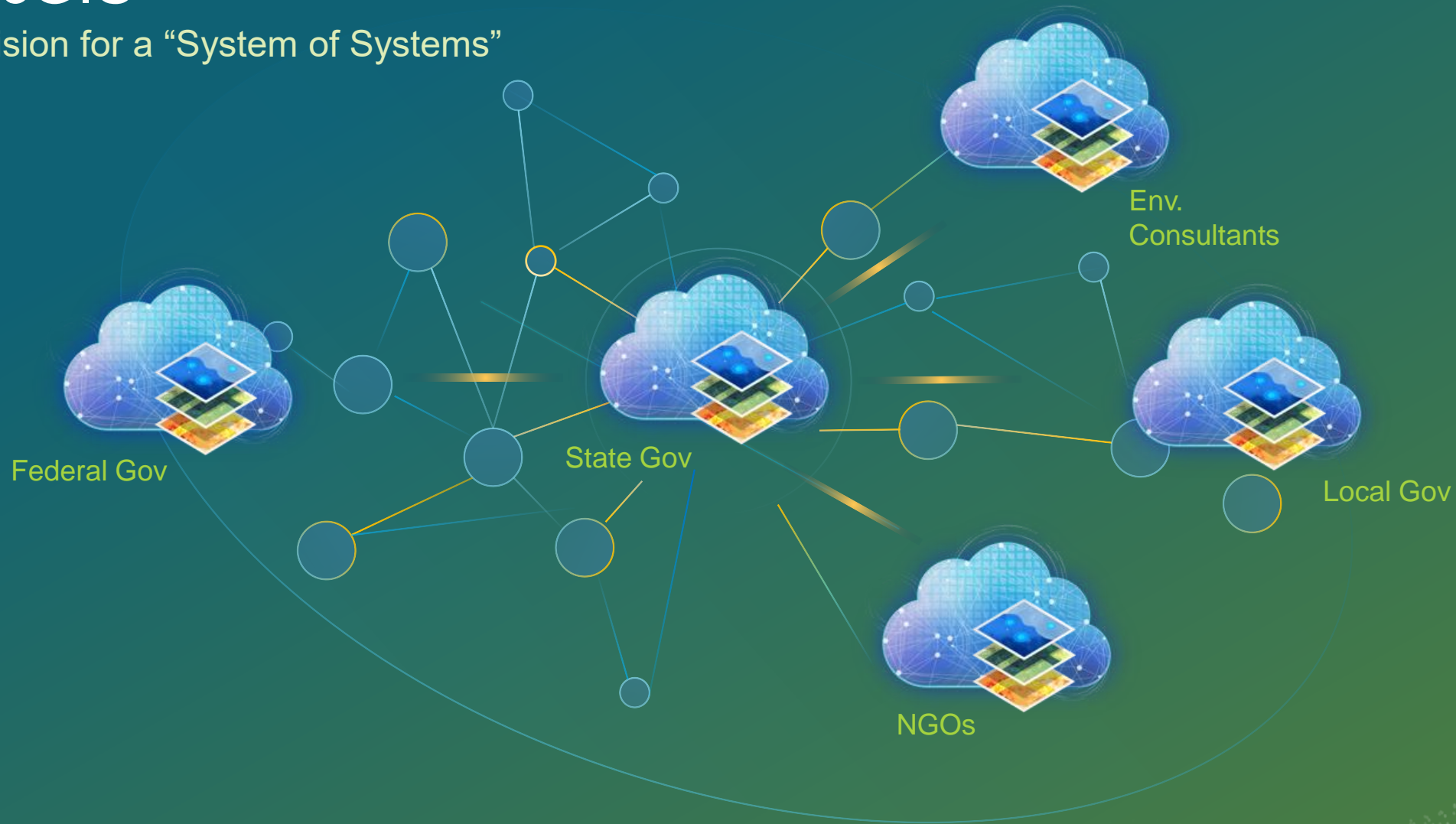


St. John Water Management District, FL Water Use Annual Report



ArcGIS

A Vision for a “System of Systems”



Telling Your Story

Through System-of-Systems Collaboration

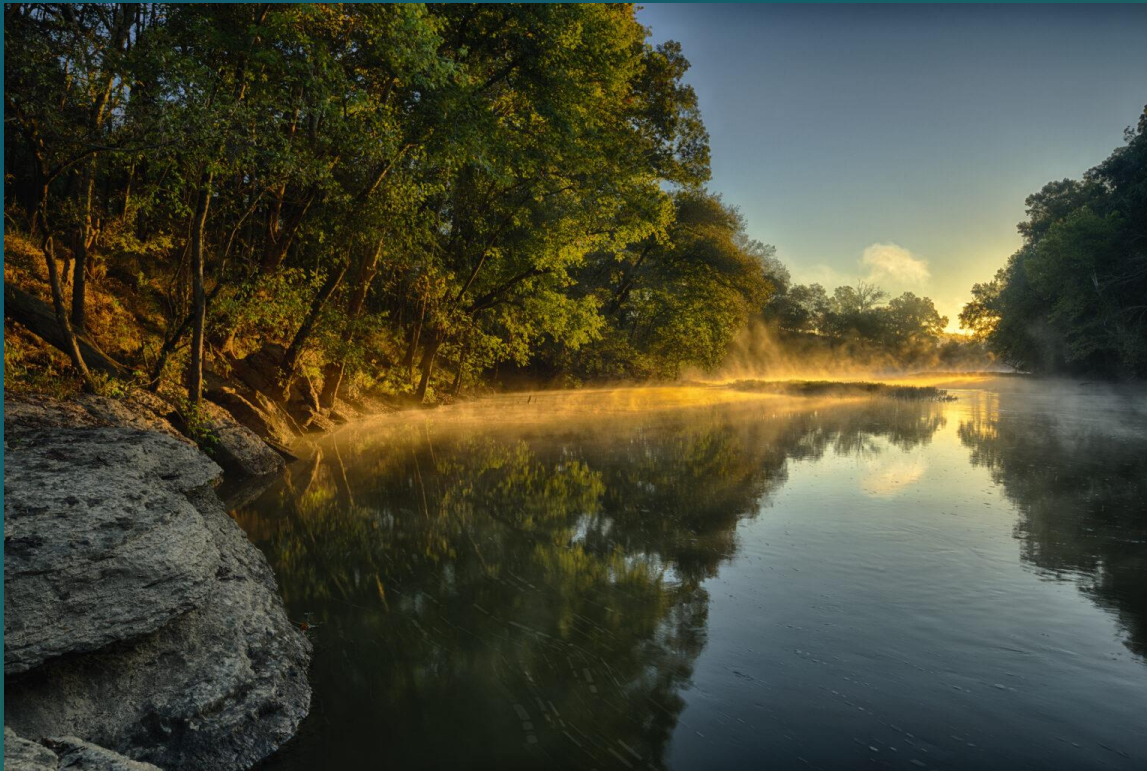
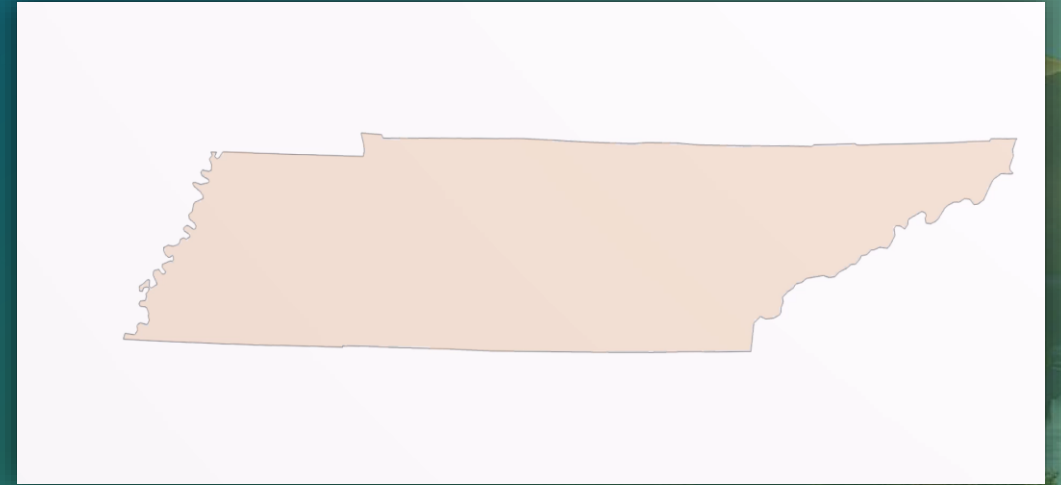
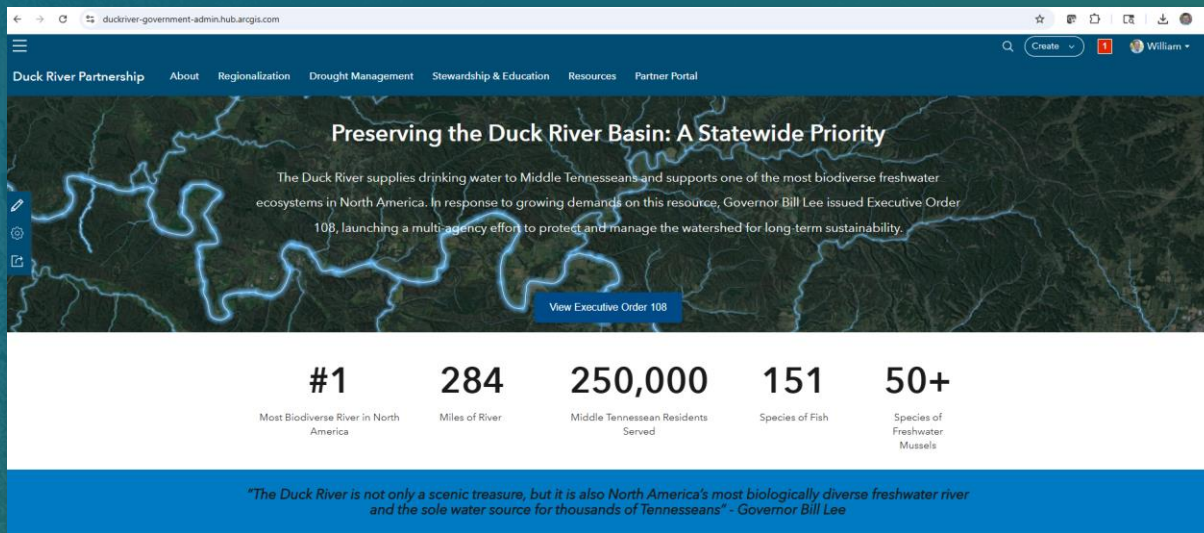


Photo: Byron Jojorian





Duck River Partnership Hub Concept Demo

Scaling with Templates

And ArcGIS Living Atlas



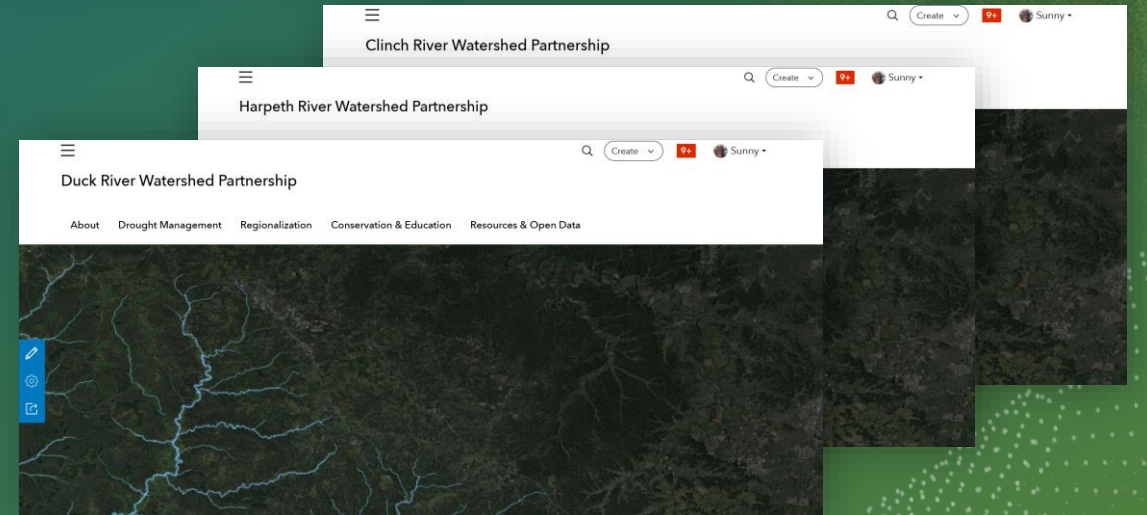
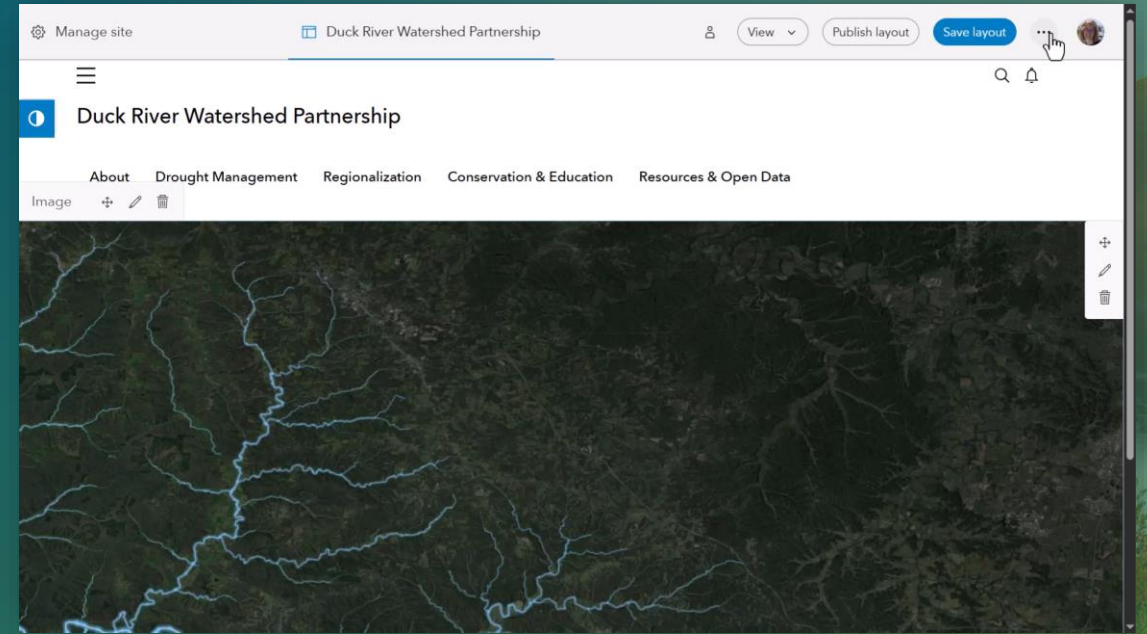
Prime Farmland

Historic Precipitation

Demographics

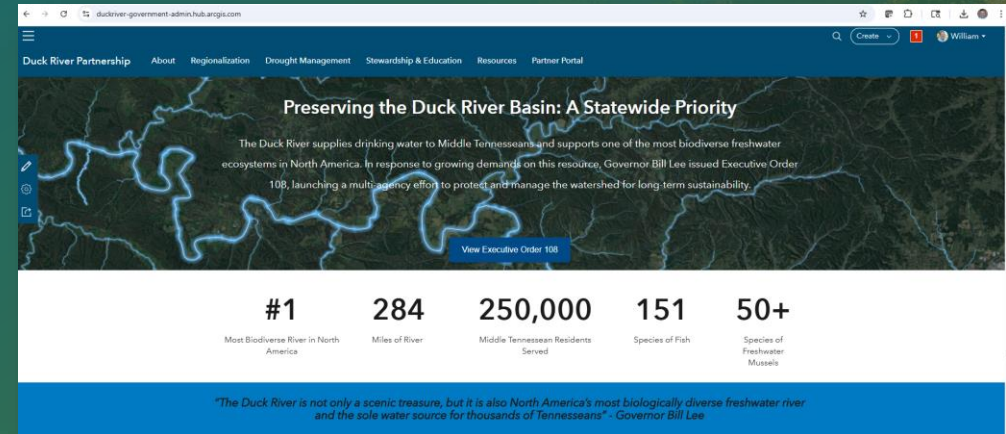
Erodability

...and thousands more!



Questions, Discussion, & Options for Getting Started

- Existing Software Licensing
 - Training and Change Management
- Solution Needs
 - Discovery and Design
 - Prototyping
 - Development and Deployment
- Options for Collaboration
 - Guidance and Advice
 - Collaborative Development
 - Project Delivery





esri[®]

**THE
SCIENCE
OF
WHERE[®]**