

## **FACT SHEET**

### **INTENT TO REISSUE A HAZARDOUS WASTE MANAGEMENT STORAGE AND TREATMENT IN CONTAINERS AND TANKS PERMIT**

**Facility Name:** Excel TSD of Tennessee, LLC

**Location:** 550 Rivergate Road  
Memphis, Shelby County, Tennessee 38109

**Facility Co-Owner:** Excel TSD of Tennessee, LLC  
P.O. Box 16471  
Little Rock, AR 72231

Best Wade Petroleum, Inc.  
201 Dodge Drive  
Ripley, TN 38063

**Facility Operator:** Excel TSD of Tennessee, LLC  
550 Rivergate Road  
Memphis, Tennessee 38109

**Permit Type:** Hazardous Waste Storage and Treatment in Containers and Tanks

**Unit Type:** Outside Hazardous Waste Container Management Area  
(OHWCMA), Hazardous Waste Management (HWM) Building A,  
HWM Building B, and Tanks F1 and F2

**Facility Contact:** Stephen B. Neal  
President  
Excel TSD of Tennessee, LLC  
550 Rivergate Road  
Memphis, TN 38109  
[sneal@excelsd.com](mailto:sneal@excelsd.com)

**EPA ID Number:** TND980847024

**Existing Permit Number:** TNHW-Draft

**Comment Period:** Begins: March 20, 2025  
Ends: May 5, 2025

### **PURPOSE**

This fact sheet is prepared pursuant to Tennessee Rule 0400-12-01-.07(7)(d) for the draft Hazardous Waste Storage and Treatment in Containers and Storage in Tanks Permit developed by the Tennessee Department of Environment and Conservation (TDEC) Division of Solid Waste

Management (DSWM). The purpose of this permitting process is to afford any interested person the opportunity to evaluate the ability of Excel TSD of Tennessee, LLC (Excel), to apply the hazardous waste management requirements. The proposal is for the permit to be issued under the authority of the Tennessee Hazardous Waste Management Act of 1977, as amended, Tennessee Code Annotated, Section 68-212-101 et seq., and Tennessee Rule Chapter 0400-12-01, Hazardous Waste Management. The draft permit is prepared in accordance with the provisions of Rule 0400-12-01-.07.

## **FACILITY DESCRIPTION**

Excel TSD of Tennessee, LLC, a RCRA permitted hazardous waste storage and treatment facility, located within an urban industrial portion of Memphis, began operations in 1986. Excel has owned and operated the facility since 2003. Excel is a commercial hazardous waste management facility authorized to store and treat hazardous wastes, and certain non-hazardous wastes, in containers and tanks located in secondarily contained areas. The hazardous waste storage and treatment facility is in an urban industrial portion of Memphis and served by Rivergate Road, which connects on the west to Riverport Road and on the east to New Horn Lake Road. The facility thus has two ways to access Tennessee's state highway system and the U.S. interstate highway system. As an industrial access road, Rivergate Road principally used only by vehicles going to and from the local industries and therefore receives only limited vehicular traffic.

Figure 1-1 Site Location Map shows a one-mile radius topographical map of the area surrounding the facility. This topographic map is used to show the significant water bodies that exist within a one-mile radius of the facility. No springs are known to exist in this area (as expected for a flat alluvial floodplain). A search of the water well data base maintained by the Tennessee Division of Water Resources found only one water well located within ¼ mile of the facility, and the approximate location of this well is shown in Figure 1-1. The data base indicates the well is owned by Fleischmann's Yeast, Inc. at 2743 Riverport Road in Memphis, and was completed on January 20, 2006 and has a total depth of 504 feet.

Figure 1-2 Facility Aerial View is an aerial view of the facility showing the approximate active boundary of the facility. Figure 1-3 Site Plan shows the Excel facility is surrounded by a perimeter fence except at its southeast corner where the fence is set back from the property line to provide off-road parking and access to the Administration Building. This is a 6-foot chain-link fence that provides access from Rivergate Road only through gates across the two vehicle driveways and a door in the south wall of the Administration Building. These two driveway gates and door are kept closed and locked except when authorized personnel are present. There is a second interior fence (also chain-link and 6-foot high) that separates the Contained Area (where all hazardous waste operations occur) and the Non-Hazardous Waste Staging Area from the southern and western portions of the facility. During working hours, Excel personnel visually monitor all of the access points, and unauthorized access by pedestrians or vehicles is easily detected and intercepted. Except for authorized contractors, visitors are allowed to enter the operations area of the Facility only when accompanied by Excel personnel. Excel also implements a continuous video surveillance system at the Facility.

All hazardous waste operations are conducted within the concrete-paved Contained Area, which provides secondary containment that captures any spills or leaks along with rainfall. Rainwater is collected in tanks and ultimately discharged to the Memphis sanitary sewer system following testing that demonstrates that the discharge limits established by the City are met. The Contained

Area consists of four areas: The Tank farm containing tanks F1 and F2, HWM Building A, HWM Building B, and Outside. Hazardous wastes area managed in containers outdoors in the western portion of the Contained Area and inside the HWM Building A and HWM Building B. Hazardous wastes are also stored and treated in two 6,000-gallon tanks (Tanks F1 and F2) located in the Tank Farm which also provides separate secondary containment. There are other tanks in the Tank Farm, and in the northeast corner of the Contained Area east of the Tank Farm, which are used to hold non-hazardous wastewater, collected storm water, and perhaps used oil.

Excel is permitted to receive hazardous wastes of virtually all types and descriptions and carrying all hazardous waste codes (i.e., “Dxxx”, “Fxxx”, “Kxxx”, “Uxxx”, and “Pxxx”). Such wastes will either exhibit the hazardous waste characteristics of Ignitability, Corrosivity, Reactivity, or Toxicity; be “listed” in Federal and State regulations because they have historically been known to exhibit such hazards; or be derived from or mixed with such “listed” hazardous wastes. However, Excel does not receive wastes which are regulated as explosive or radioactive materials.

Excel receives a variety of hazardous wastes from various commercial, industrial, institutional, and governmental generators in the mid-south region. It is a “first tier” commercial facility that typically receives wastes in containers directly from generators, performs limited or no processing of such wastes, and then ships the wastes back out in containers (generally larger) to other properly authorized facilities for recycling, treatment, or disposal. All wastes shipments to and from the Facility are via truck. The only hazardous waste management operations performed at the Facility are storage and treatment in containers and aboveground tanks. No incineration or disposal is performed at the Excel facility. Excel does not currently import or export hazardous wastes.

Excel’s primary operation is the blending of hazardous waste-derived fuels from various fuel-candidate wastes received and then shipping the blended fuel to cement kilns or other properly authorized burners of such hazardous waste-derived fuel. Excel also consolidates (bulks) various compatible wastes into larger U.S. DOT-approved containers for more economical transportation and off-site recycling, treatment, or disposal at other authorized waste management facilities. A “drum in, drum out” operation is also implemented where wastes remain in their containers and are simply stored for a period of time prior to re-shipment to another authorized facility for recycling, treatment, or disposal, typically as part of a more economical larger shipment. Excel also performs emptying of pressurized containers and manual shredding of containers that cannot otherwise be emptied so as to enable separation of the wastes from the container structural materials. Excel will also perform some neutralization and stabilization of corrosives in containers, with the treated residues typically shipped as a solid waste to a non-hazardous solid waste landfill.

### **PERMIT HISTORY**

In 1986, Wall Chemical, Inc. opened the hazardous waste storage and treatment facility. The original permit TNHW-075 was issued on 02/02/1992 to Bryson Recovery Services who acquired the facility from Wall Chemical, Inc. Later in 1992, a modification changed the owner of the facility to Excel TSD, Inc. In 2003 a modification changed the owner and operator to Excel TSD of Tennessee, LLC (Excel). The current permit, TNHW-138, was issued to Excel TSD of Tennessee, LLC on September 30, 2008, and was effective for ten (10) years. On February 09, 2017, TNHW-138 was modified to expand the facility to incorporate the adjacent Best Wade Petroleum property Excel was leasing. Tennessee Hazardous Waste Management Regulations require that the facility submit the renewal application 180 days before the current permit expires. Excel TSD of Tennessee, LLC submitted to DSWM a Part A and Part B hazardous waste permit

renewal applications on April 19, 2018, after submitting an extension request on March 30, 2018. The approval of the extension request and submittal on March 30, 2018 allows the facility to continue operations under the current permit until a final decision is made. Excel held the pre-application meeting for the renewal application on April 10, 2018, as public noticed on March 09, 2018, in the Memphis *Commercial Appeal* and on March 14, 2018 on Memphis radio station FM 100. No comments were received from the public.

### **PROPOSED RENEWAL PERMIT**

Excel will continue the operation of the current storage and treatment units with the same storage and treatment capacity. The permit will require regular inspections and repairs to ensure that the containers, tanks, secondary containment, and fence are maintained in good condition.

The proposed permit also requires personnel training, a contingency plan, corrective action for the solid waste management units and areas of concern at the facility; requires notification of imminent hazards; and when applicable, compliance with the requirements developed under the land disposal restrictions and organic air emission standards. Besides the post-closure care monitoring and maintenance of the landfill, the proposed permit requires the continuance of all these other activities.

### **PERMIT FORMAT**

The permit format consists of four sections that specify the duties, conditions and other requirements that Excel must meet for compliance with their hazardous waste storage permit. An outline of those sections follows.

#### **I. STANDARD CONDITIONS**

This section provides the authorization and severability of the permit. Definitions, general duties and requirements, document maintenance, maintenance fee, notices, precedence, and permit structure are also provided in this section. The language in this section is consistent in all hazardous waste permits issued by the State of Tennessee.

#### **II. GENERAL FACILITY CONDITIONS**

This section provides the general conditions that apply to permitted hazardous waste facilities in the State of Tennessee. This section addresses the following: management of waste, sampling and monitoring, site security, facility inspections, personnel training, preparedness and prevention, contingency plan, manifest system, recordkeeping and reporting, facility closure, financial requirements, land disposal restrictions, process vents air emission standards, equipment leaks air emission standards, containers air emission standards, organic air emission standards, restriction on ownership of the facility, and prohibition of the placement of transfer facility hazardous waste in permitted storage units.

#### **III. SPECIFIC CONDITIONS FOR STORAGE IN CONTAINERS**

This section provides the specific conditions that apply to storing hazardous waste in containers in units at a commercial facility, including waste identification; container conditions; waste compatibility with containers; container management; aisle spacing;

calibration, inspection, monitoring, and recordkeeping; leak or spills containment, detection, and management; ignitable or reactive waste special requirements; incompatible waste special requirements; container management unit closure; and air emission standards.

#### **IV. SPECIFIC CONDITIONS FOR STORAGE AND TREATMENT IN TANKS**

This section provides the specific conditions that apply to storing and treating hazardous waste in tanks F1 and F2 at a commercial facility, including waste identification; tank conditions; waste compatibility with tanks; tanks management; calibration, inspection, monitoring, and recordkeeping; leak or spills containment, detection, and management; ignitable or reactive waste special requirements; incompatible waste special requirements; tank management unit closure; and air emission standards.

#### **V. SCHEDULE OF COMPLIANCE**

This section describes additional requirement upon issuance of the permit.

#### **VI. SPECIFIC CONDITIONS FOR CORRECTIVE ACTION**

This section provides the specific conditions that apply to solid waste management units and areas of concern located at the Excel TSD of Tennessee, LLC facility. The present status of all units at the facility is for no further action (NFA) under the corrective action conditions of the current and the proposed permit

The following are the attachments to the permit sections. The attachments provide specific procedures and details as to how Excel shall comply with the duties, conditions and other requirements specified in those sections.

- ATTACHMENT 1. HAZARDOUS WASTE TO BE MANAGED
- ATTACHMENT 2. WASTE ANALYSIS PLAN
  - ATTACHMENT 2.1 FORMS UTILIZED IN WASTE ANALYSIS PLAN IMPLEMENTATION
  - ATTACHMENT 2.2 WASTE TESTING SUPPORT FOR PROCESS DETERMINATION
  - ATTACHMENT 2.3 ETSD PROCEDURE FOR DETERMINING WASTE VOLUME IN A CONTAINER
- ATTACHMENT 3. FACILITY SECURITY
- ATTACHMENT 4. FACILITY INSPECTION PROGRAM
  - ATTACHMENT 4.1 INSPECTION SCHEDULE TABLE
  - ATTACHMENT 4.2 INSPECTION CHECKLIST
  - ATTACHMENT 4.3 SECONDARY CONTAINMENT SURFACES INSPECTION AND MAINTENANCE PLAN
- ATTACHMENT 5. ETSD TRAINING PROGRAM OUTLINE
  - ATTACHMENT 5.1 ETDS JOB DESCRIPTION
- ATTACHMENT 6. PREPAREDNESS AND PREVENTION
- ATTACHMENT 7. CONTINGENCY PLAN
  - ATTACHMENT 7.1 EVACUATION ROUTE MAP / EMERGENCY EQUIPMENT LOCATION MAP
  - ATTACHMENT 7.2 INCIDENT REPORTING FORM

- ATTACHMENT 7.3 ANNEXES / DISTRIBUTION
- ATTACHMENT 8. MANAGEMENT OF HAZARDOUS WASTE IN CONTAINERS
- ATTACHMENT 8.1 FIGURES
- ATTACHMENT 8.2 P.E. CERTIFICATIONS OF SECONDARY CONTAINMENT ADEQUACY
- ATTACHMENT 8.3 OPERATING FORMS
- ATTACHMENT 8.4 U.S. DOT SEGREGATION TABLE FOR HAZARDOUS MATERIALS
- ATTACHMENT 8.5 EXAMPLES OF POTENTIALLY INCOMPATIBLE WASTES
- ATTACHMENT 8.6 CONCRETE REPAIR AND REHABILITATION PLAN FOR THE CONTAINED AREAS
- ATTACHMENT 9. MANAGEMENT OF TANK SYSTEMS AND EQUIPMENT AND CONTAINERS USED IN FUEL BLENDING
- ATTACHMENT 9.1 P.E. STRUCTURAL INTEGRITY ASSESSMENT OF TANK SYSTEMS F1 AND F2
- ATTACHMENT 9.2 P.E. ADEQUACY CERTIFICATION FOR TANK FARM SECONDARY CONTAINMENT SYSTEM
- ATTACHMENT 9.3 TANK SYSTEM DIAGRAMS
- ATTACHMENT 9.4 RCRA SUBPART BB SUMMARY TABLE AND DIAGRAMS
- ATTACHMENT 9.5 LOG FORMS FOR DOCUMENTING ORGANIC AIR EMISSIONS INSPECTION, MONITORING/TESTING, AND REPAIR EFFORTS
- ATTACHMENT 9.6 EXAMPLE ETSD MOVP DETERMINATION TOOLS
- ATTACHMENT 10 SOLID WASTE MANAGEMENT UNITS AND AREAS OF CONCERN
- ATTACHMENT 11 CLOSURE PLAN
- ATTACHMENT 11.1 PROCEDURE FOR ESTABLISHING BACKGROUND SOIL CONCENTRATIONS FOR METALS AT CLOSURE
- ATTACHMENT 12 SOIL SAMPLE PLAN

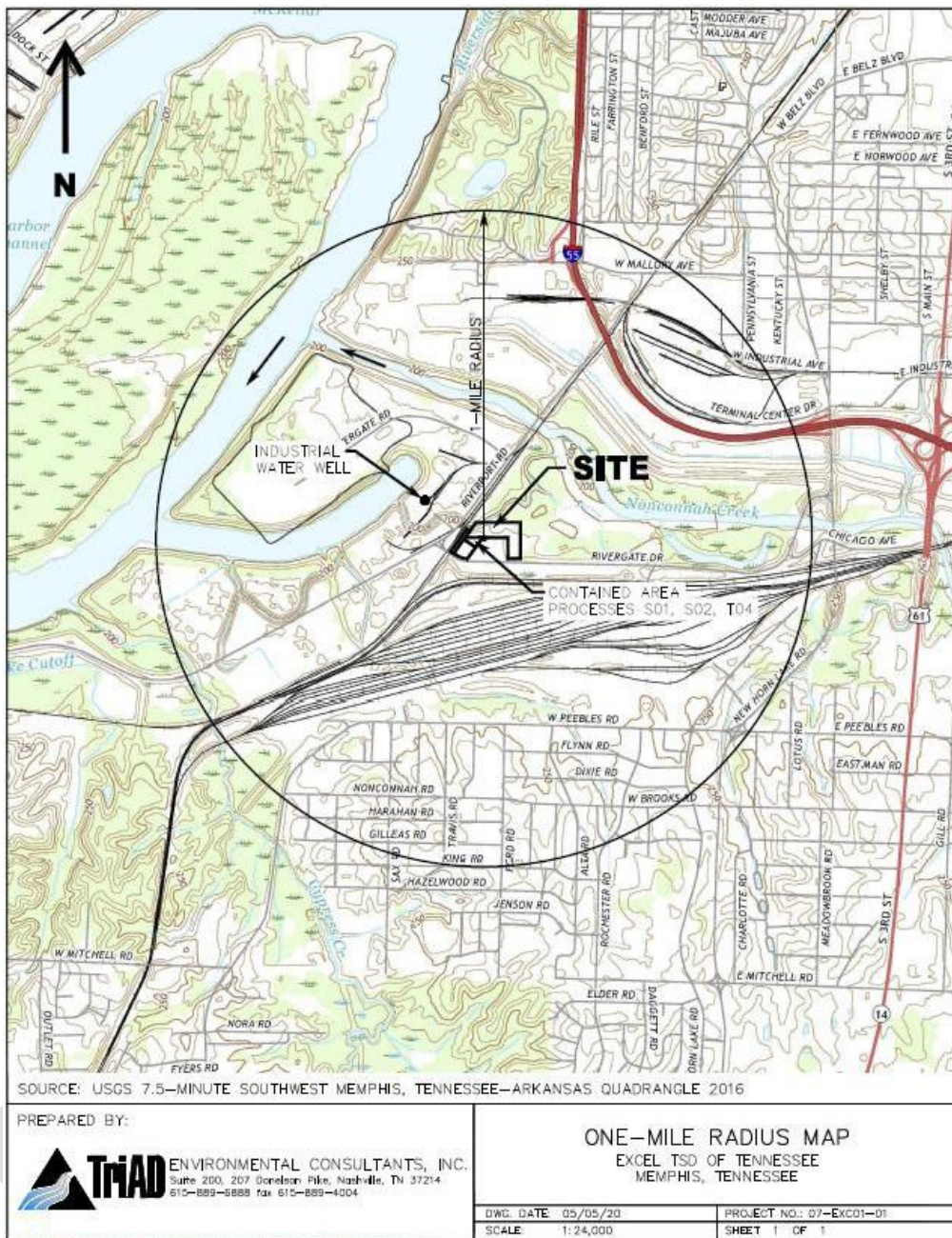
### **DOCUMENTS AVAILABLE FOR REVIEW**

Electronic copies of the draft permit and fact sheet are available online at <https://www.tn.gov/environment/notices/excel-tsd>; at the DSWM Central Office located at the Davy Crockett Tower 7th Floor, 500 James Robertson Parkway, Nashville, TN 37243 (615-532-0780); and at the TDEC Memphis Environmental Field Office, 8383 Wolf Lake Drive, Bartlett, TN 38133 (901-371-3000). A paper copy of the draft permit is available for public inspection at the Memphis Public Library - South Branch Library located at 1929 S. 3<sup>rd</sup> Street, Memphis TN.

### **COMMENTS**

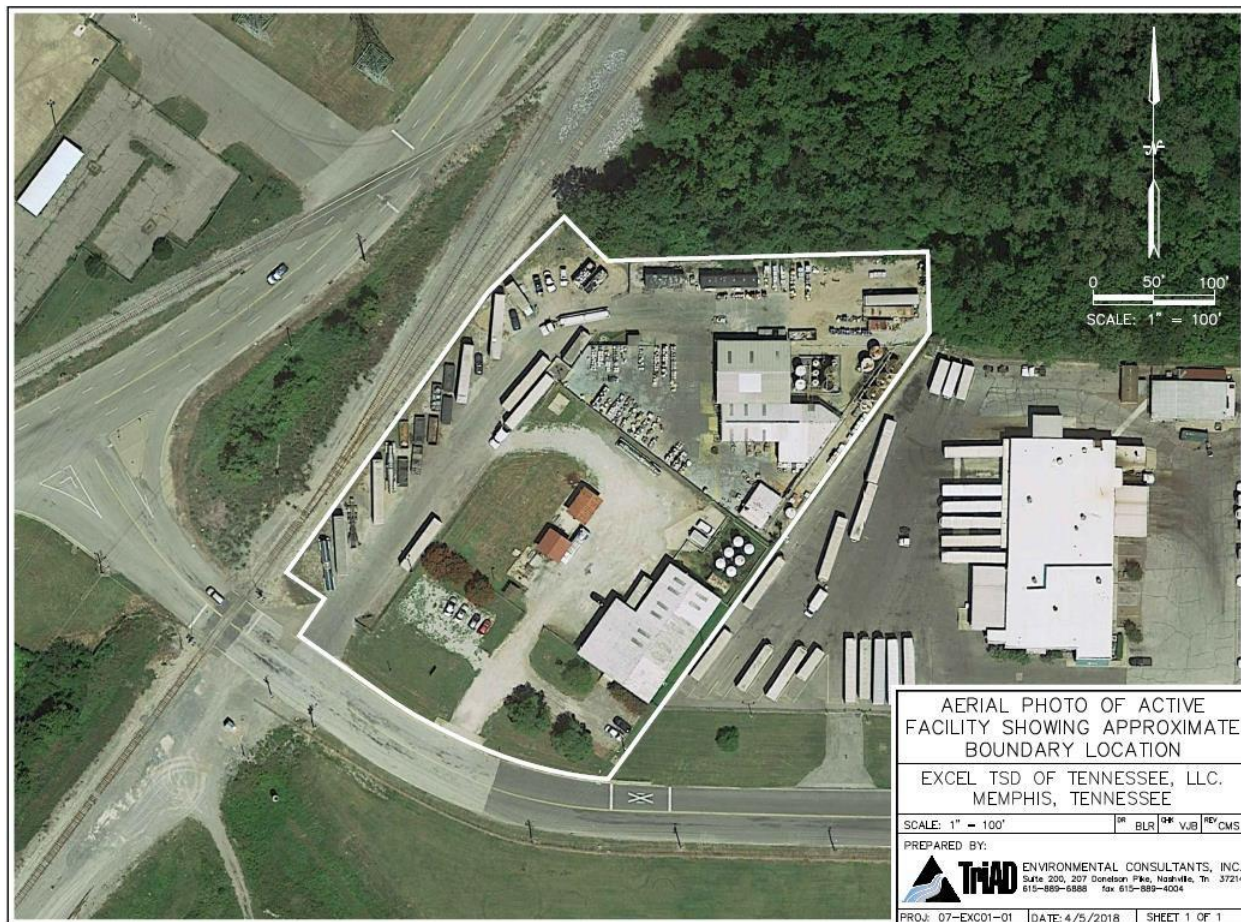
To comment on the proposed permit renewal or to request a public hearing, contact Mr. Brett Harris, Hazardous Waste Permitting/Corrective Action Section Manager, Division of Solid Waste Management, Tennessee Department of Environment and Conservation, Davy Crockett Tower, 7th Floor, 500 James Robertson Parkway, Nashville, Tennessee 37243-1535 (615-393-9221), [Brett.Harris@tn.gov](mailto:Brett.Harris@tn.gov). Comments must be received by 4:30 p.m. CDT, May 5, 2025, to assure consideration.

Figure 1-1  
Site Location Map



C:\DRAWING\DWG\07-EXC01-01\101-FIG-1-1-ONE-MILE-RADIUS-MAP-05-21-20.dwg

Figure 1-2  
Facility Aerial View



DR

Figure 1-3  
Site Plan

