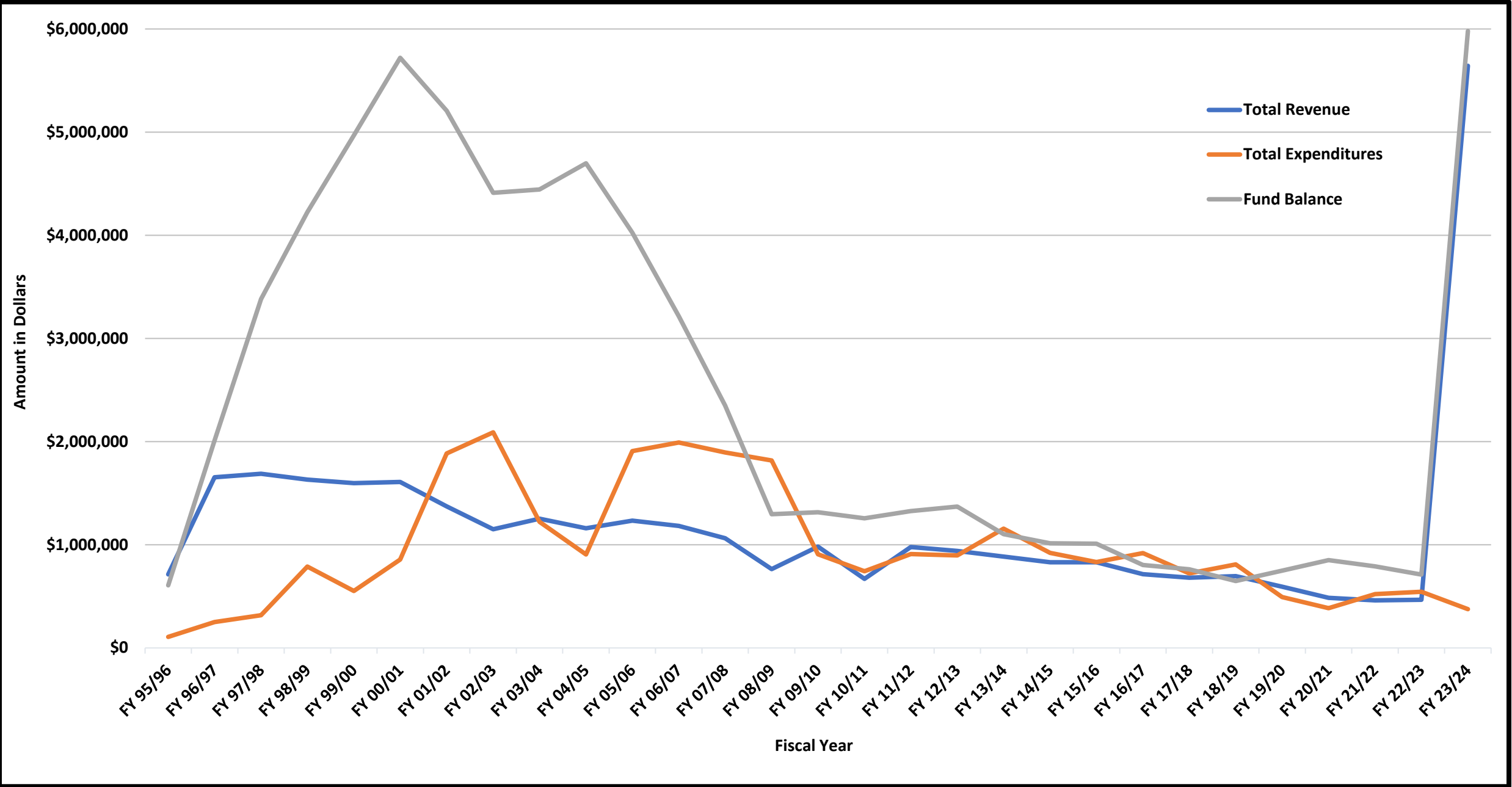
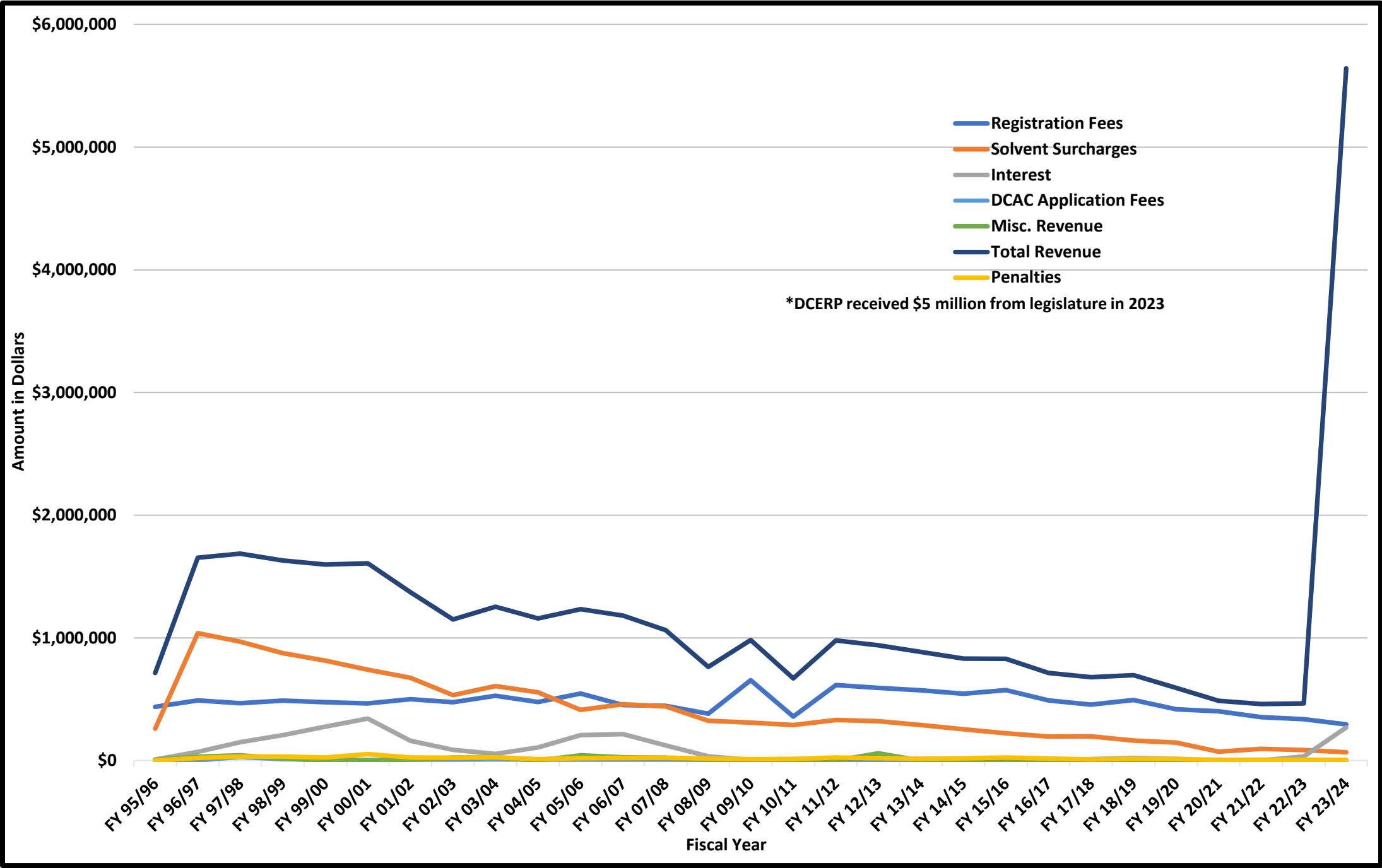


Graph depicting DCERP total revenue and total expenditures since program inception in 1996. Current through close of FY 23/24. Note that DCERP received \$5 million from legislature in 2023.



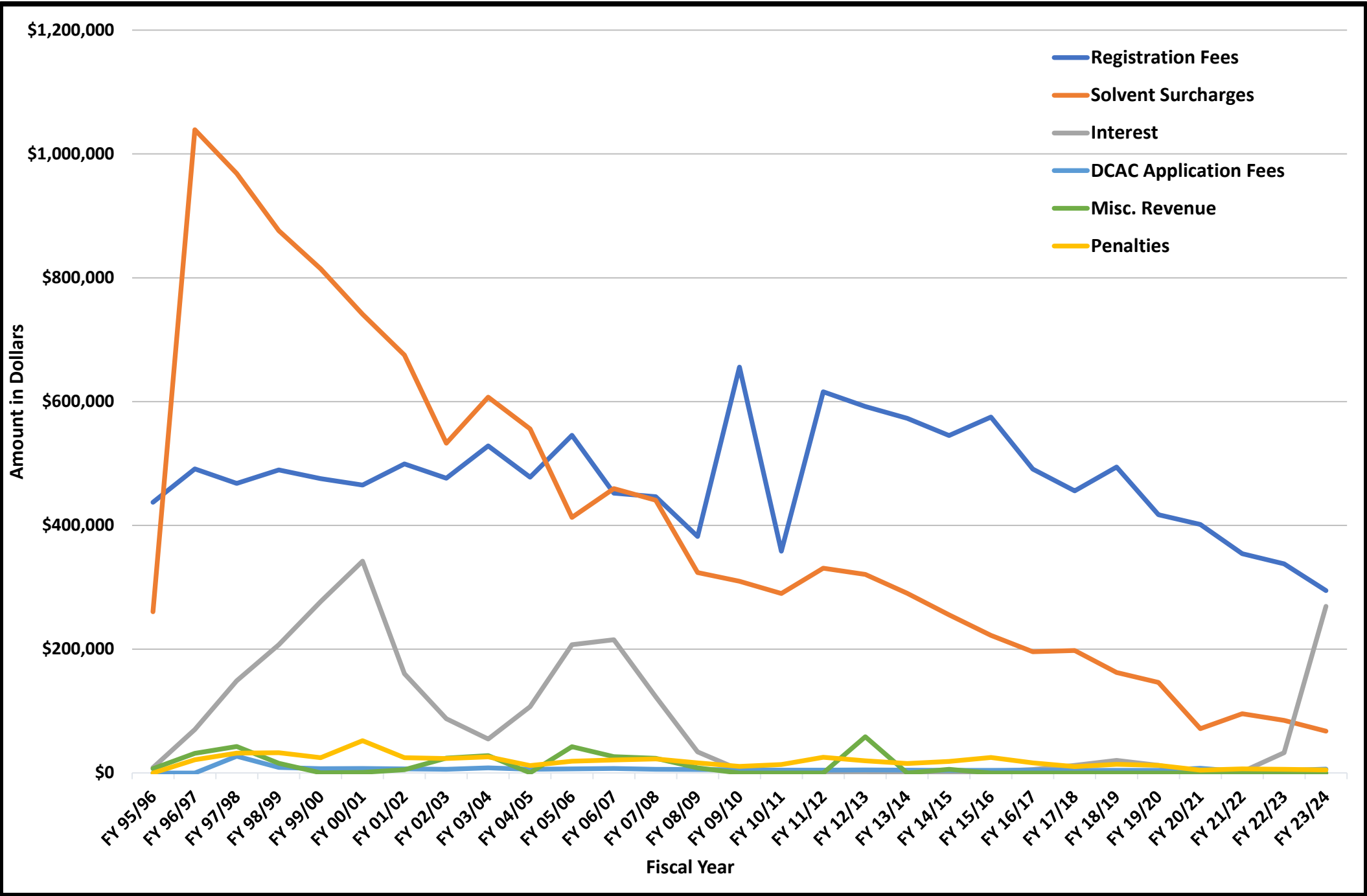
DCERP revenue broken down by revenue stream. Depicts revenue from program inception in 1996 to 2024 (current through close of FY 23/24).

Includes \$5 million appropriation from legislature in 2023.



DCERP revenue broken down by revenue stream. Depicts revenue from program inception in 1996 to July 2024 (current through close of FY 23/24).

Does not include \$5 million received from legislature in 2023.



Number of DCERP registered facilities by year (active and abandoned) 1996 to 2024.

