

PLATE III F
SOUTHEAST

TENNESSEE DEPT
OF CONSERVATION

STATE OF
TENNESSEE

LINE TC-2

DEPTHPOINTS 1590 - 2238

DEPTH SECTION

FIELD DATA

FIELD PARTY: 1386
DATE: FEB 26, 1977
ENERGY SOURCE: 100 FT VIBRATORS ON LINE 40
RECEIVER ARRAY: 24 CHANNELS IN LINE 200 FT APART
RECORDING INSTRUMENTS: 24 CHANNELS IN LINE 200 FT APART
RECORDING FILTERS: 24 CHANNELS IN LINE 200 FT APART
GAIN: 1000
TIME: 1000
CORRELATION: 4 MILLI SECONDS
NOMINALLY 16 FOLD
CAP BETWEEN GROUP 12 AND 13
775 FT
HALF SEARS TYPE L 21A
NOMINALLY 440 FEET
440 FEET
48 TRACES

DIGITAL PROCESSING
EDIT AND TRUE AMPLITUDE RECOVERY

TIME-VARIANT DECONVOLUTION

EQUALIZATION

DATUM STATICS APPLICATION

VELOCITY EVALUATION

NORMAL MOVEOUT CORRECTIONS

FIRST BREAK SUPPRESSION

AUTOMATIC RESIDUAL STATICS

COMMON DEPTH POINT STACK

EQUALIZATION

DIP FILTER

TIME-VARIANT DIGITAL FILTERING

TIME-DEPTH CONVERSION

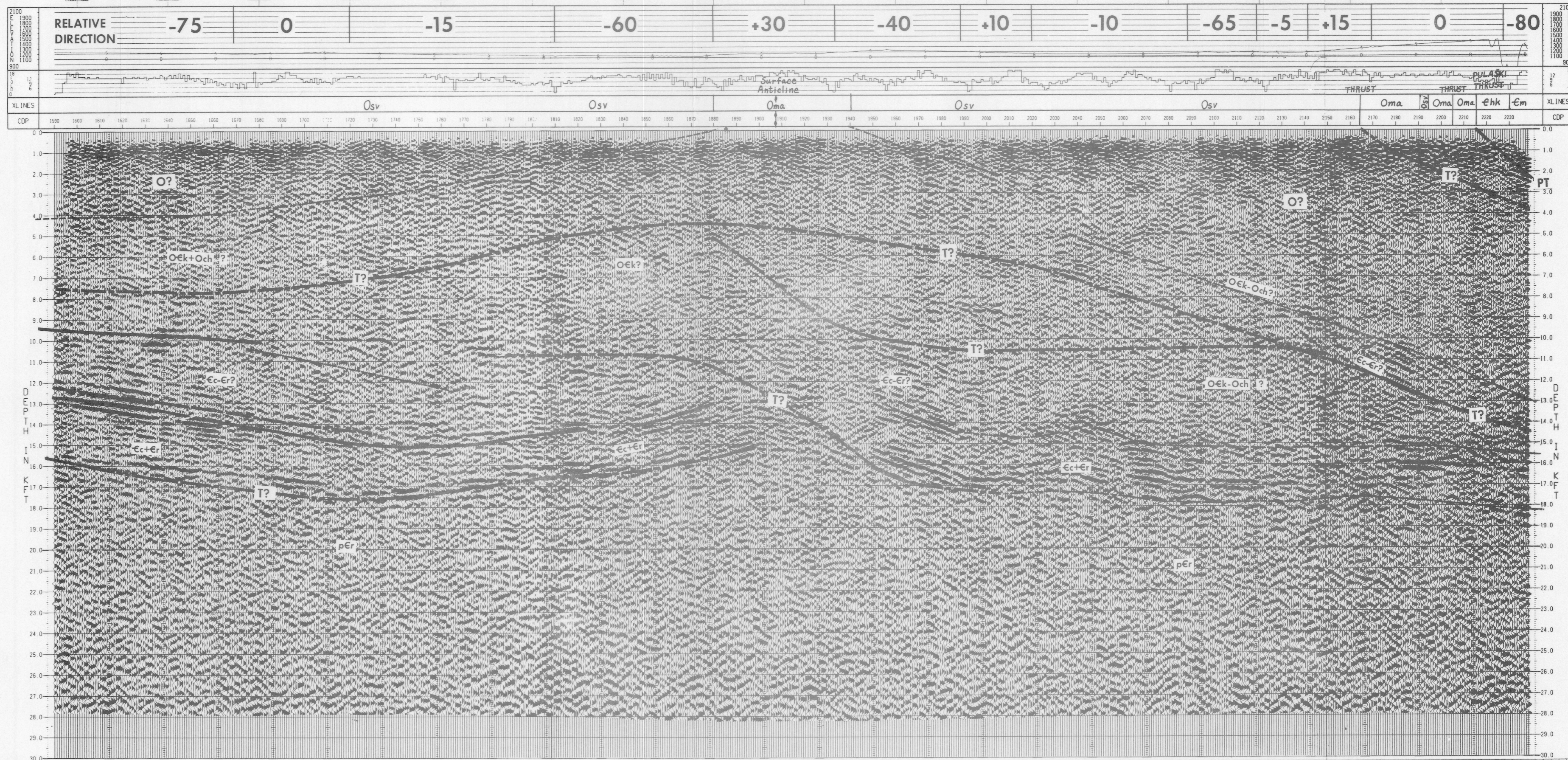
DISPLAY SPECIFICATIONS



GEOPHYSICAL SERVICE INC.

(A SUBSIDIARY OF TEXAS INSTRUMENTS INC.)

PROCESSING CHECKED BY: TENC22
04 OCT 1977
09 53 35



DEPTH SECTION
LINE TC-2
DEPTHPOINTS 1590 - 2238
TENNESSEE DEPT
OF CONSERVATION
STATE OF
TENNESSEE