

PLATE IIIA

SOUTHEAST

TENNESSEE DEPT OF CONSERVATION

STATE OF TENNESSEE

K-1 SOUTH DEPTHPOINTS 101 - 454 DEPTH SECTION

FIELD DATA

FIELD PARTY: 366 AND 386
 DATE SHOT: MARCH 30 1973
 ENERGY SOURCE: VIBRATORS
 SHOT ARRAY: IN LINE
 RECEIVER ARRAY: TAPERED IN LINE
 RECORDING INSTRUMENTS: OFS-111 800 SLOPE
 RECORDING FILTERS: 120K NOTCH IN
 GAIN CONTROL: STRAIGHT
 GAIN: HIGH
 SAMPLE RATE: 4 MILLI SECONDS
 RECORD LENGTH: 3 SECONDS AFTER CORRELATION
 MULTIPLE GATES: NOMINALLY 12 FOLD
 ENERGY SOURCE STAT: 4250-660-0-660-4250 FT.
 SLS: L2
 IN LINE: 500 FEET
 GROUP CENTER INTERVAL: 330 FEET
 SHOTPOINT INTERVAL: 24 TRACES

DIGITAL PROCESSING

EDIT AND TRUE AMPLITUDE RECOVERY

SPHERICAL DIVERGENCE AND EXPONENTIAL

INITIAL TIME: 0.0 SEC

FINAL TIME: 3.0

TIME-VARIANT DECONVOLUTION

NUMBER OF FILTERS: 3

FILTERS ARE NOT NORMALIZED

TIME-VARIANT SCALING

MULTIPLE GATES

SCALING: UNITY

DATUM STATICS APPLICATION

SMOOTHED SURFACE

CORRECTIONAL VELOCITY: 10000 FT/SEC

VELOCITY EVALUATION

TYPE: 703

NORMAL MOVEOUT CORRECTIONS

CONCERNING VELOCITY FUNCTIONS USED

FIRST BREAK SUPPRESSION

150 MSEC AT 4500 FT

AUTOMATIC RESIDUAL STATICS

COMMON DEPTH POINT STACK

RECOVERY SEEN: SMOOTH

PROCESSING FOLD: 12

EQUALIZATION

DIP FILTER

TIME-VARIANT DIGITAL FILTERING

50 48 HZ AT 500 MSEC

14 48 HZ AT 1000 MSEC

MULTIPLE GATES

TIME-DEPTH CONVERSION

DISPLAY SPECIFICATIONS

TRACE SPACING: 13 TRACES/FT

DEPTH SCALE: 5050 INCHES/FT

AMPLITUDE: NORMAL

TRACE BIAS: 15 PERCENT

DISPLAY GAIN

INPUT

CDP: 454

MAX: 0.01

MIN: 0.0001

W.D.: 15000

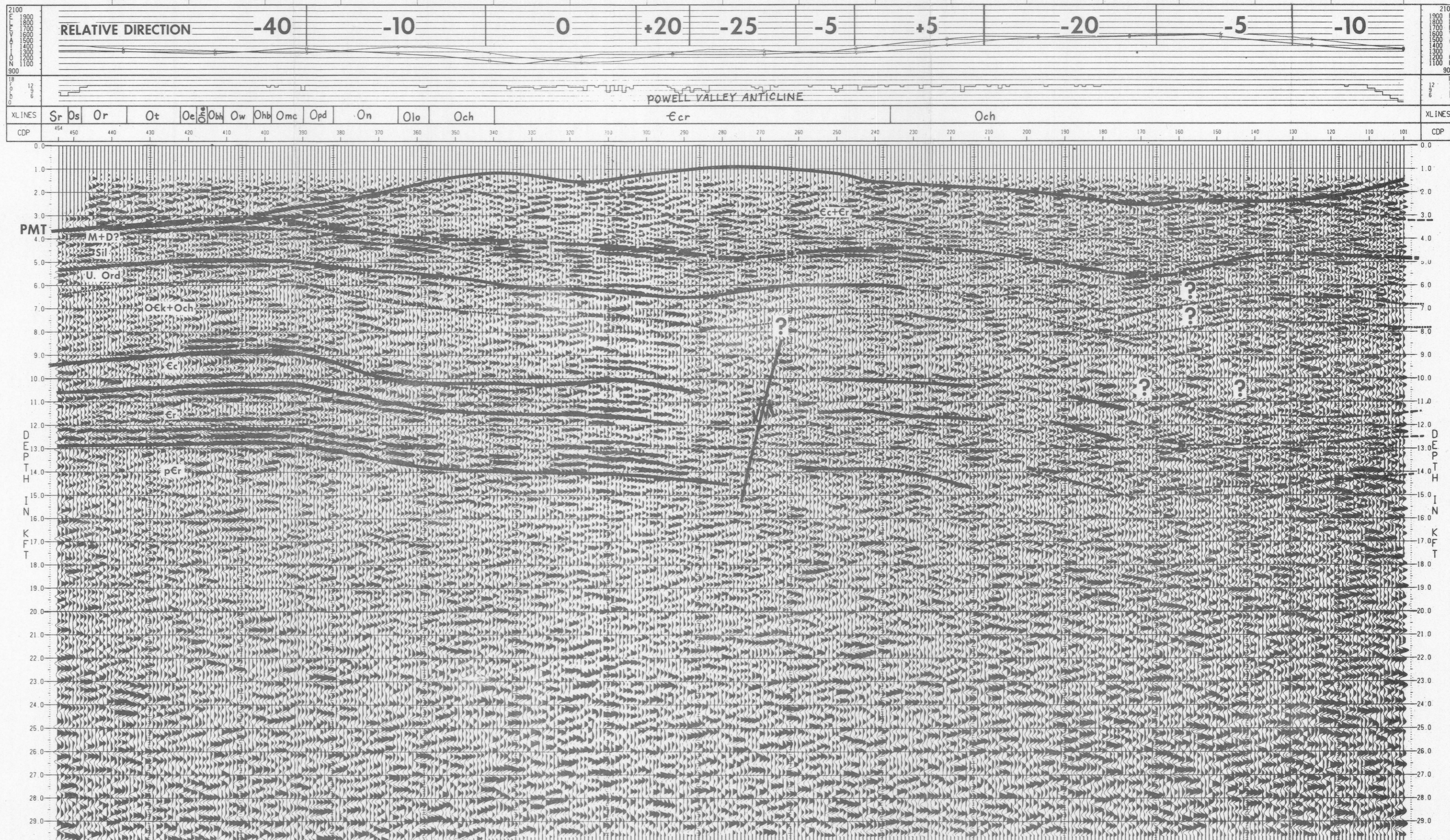


GEOPHYSICAL SERVICE INC.

(A SUBSIDIARY OF TEXAS INSTRUMENTS INC.)

PROCESSING CHECKED BY: 07 OCT 1977

19-33 48



DEPTH SECTION

DEPTHPOINTS 101 - 454

TENNESSEE DEPT OF CONSERVATION

STATE OF TENNESSEE