



Tennessee Riverpark Extension

A Linear Trail through an Industrial Landscape

THE VISION



Implement a three-mile extension of Tennessee Riverpark with a multi-use path through active and brownfield industrial sites to provide the following benefits:

- 1) Catalyst for development
- 2) Safe pedestrian/bike connection
- 3) Improved quality of life for users
- 4) Attract future industry

EXISTING CONDITIONS

Tennessee Aquarium
Walnut St. Bridge
Coolidge Park
Aramco Highway



Old Sand & Gravel Facility



Active Industry



Old Foundries





Approximate Riverwalk Alignment

Existing Rail Yard

Active Metal Recycling River Yard

Active River Port Crane

Existing Building Modified for Riverwalk

Existing Stormwater Treatment Pond

Tennessee River

Active Boiler Manufacturing Facility

Active Turbine Manufacturing Facility

Active Metal Recycling Facility

Closed Foundry Sand Landfill

The design team threaded a complex transportation/park corridor through an area of active industrial properties, three railroads, major utility features, an interstate, city streets, and brownfields while promoting the cultural, historical, and environmental story of the community.

CSX GRADE SEPARATED CROSSING



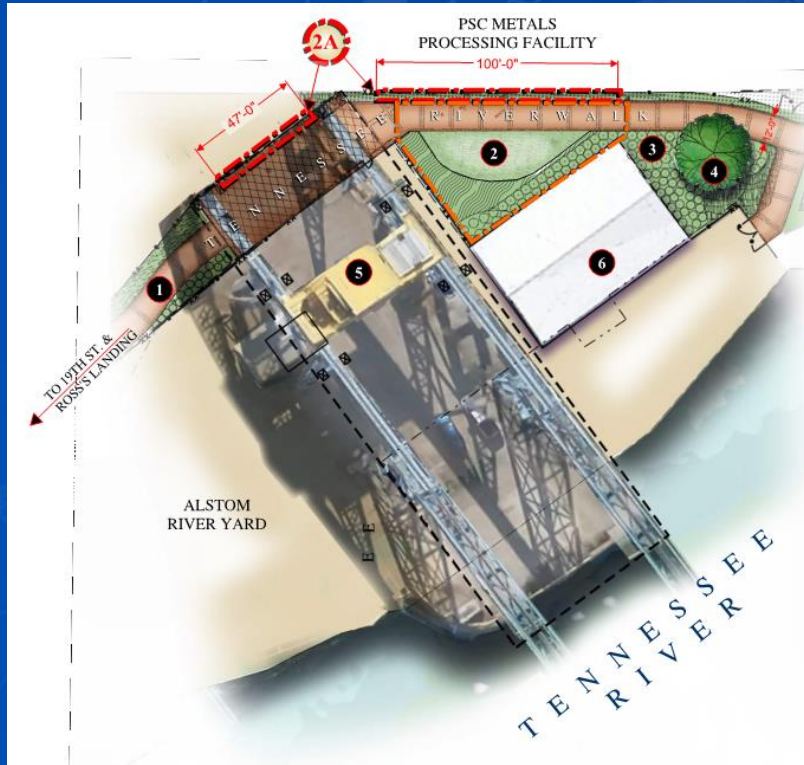


One of the biggest challenges was the existing CSX rail underpass crossing. The gang graffiti and flooding at the underpass created a foreboding scary space.



The design team embraced the industrial history of an existing foundation wall of the site in the final solution to transform the underpass into a unique design feature. Industrial elements were incorporated into the required overhead safety structure to relate to Wheland Foundry that used to be located on the site.

SAFETY & SECURITY COORDINATION WITH ACTIVE INDUSTRIAL OPERATIONS



Concept Images depicting the design solution for the path to safely pass under the largest active river crane on the Tennessee River.

Visitors can see the world's largest hydroelectric turbines load onto barges.



Safety fencing was designed under the crane and crane stops were installed on the crane rails to create a safe zone for visitors to utilize the Riverwalk safely without conflict with the operations of the crane.

INDUSTRIAL ARTIFACTS

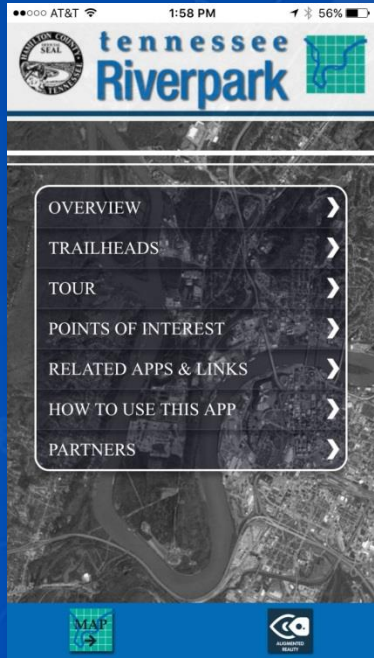
Rather than shying away from the area's industrial origins, design of the Riverwalk extension celebrates it. The design incorporates industrial artifacts found on-site to create an outdoor gallery space that highlights the industrial and cultural heritage of the area.



TECHNOLOGY FOR HISTORICAL INTERPRETATION

A mobile App was created to enhance the interpretive history experience of the project beyond standard signage. The App includes:

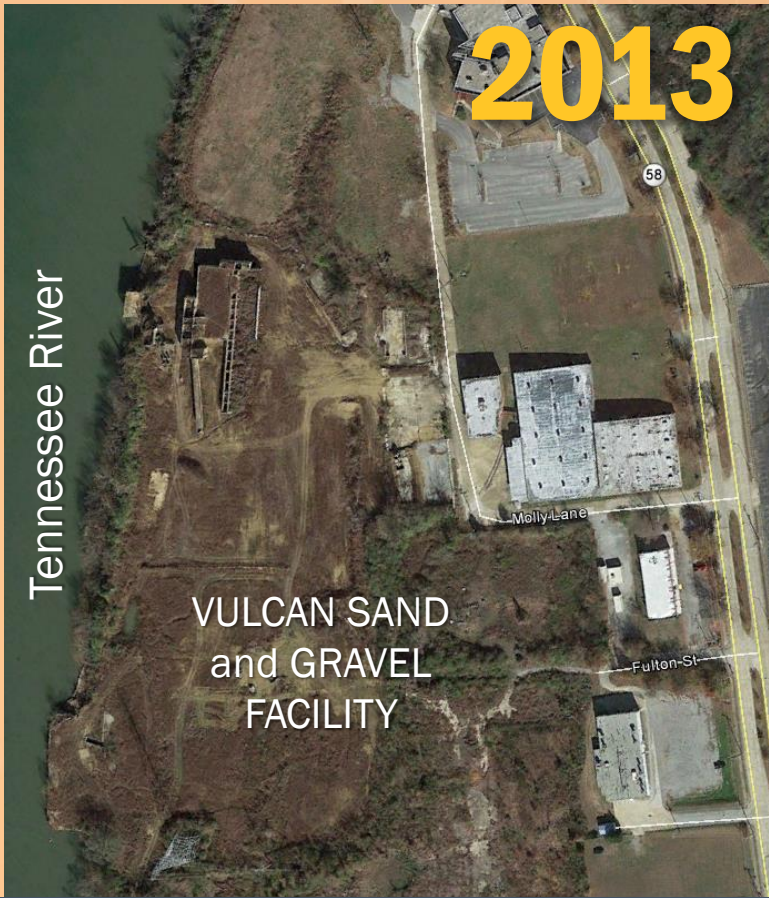
- 1) Video & Web links
- 2) GIS location mapping
- 3) Geofences
- 4) Augmented Reality



CATALYST FOR DEVELOPMENT

The Riverwalk was noted as one of the primary reasons the developer for Cameron Harbor, which is a \$200 million mixed use development on an abandoned Vulcan sand and gravel property.





- Boat slips
- Condos
- Mixed-use retail/commercial
- Apartments
- Single-family homes
- Apartments
- Riverwalk
- Riverpark Trailhead

The images depict the remarkable transformation of the Vulcan Sand and Gravel Facility into the Cameron Harbor Development mixed-use development adjacent to the Riverwalk.

Single family homes in the Cameron Harbor development were oriented to front the Riverwalk and have replaced the large concrete gravel storage structures.



BEFORE

The Tennessee Riverwalk is one of the more significant efforts at the heart of Chattanooga's renaissance and has become the crown jewel of Hamilton County and Chattanooga's park system.





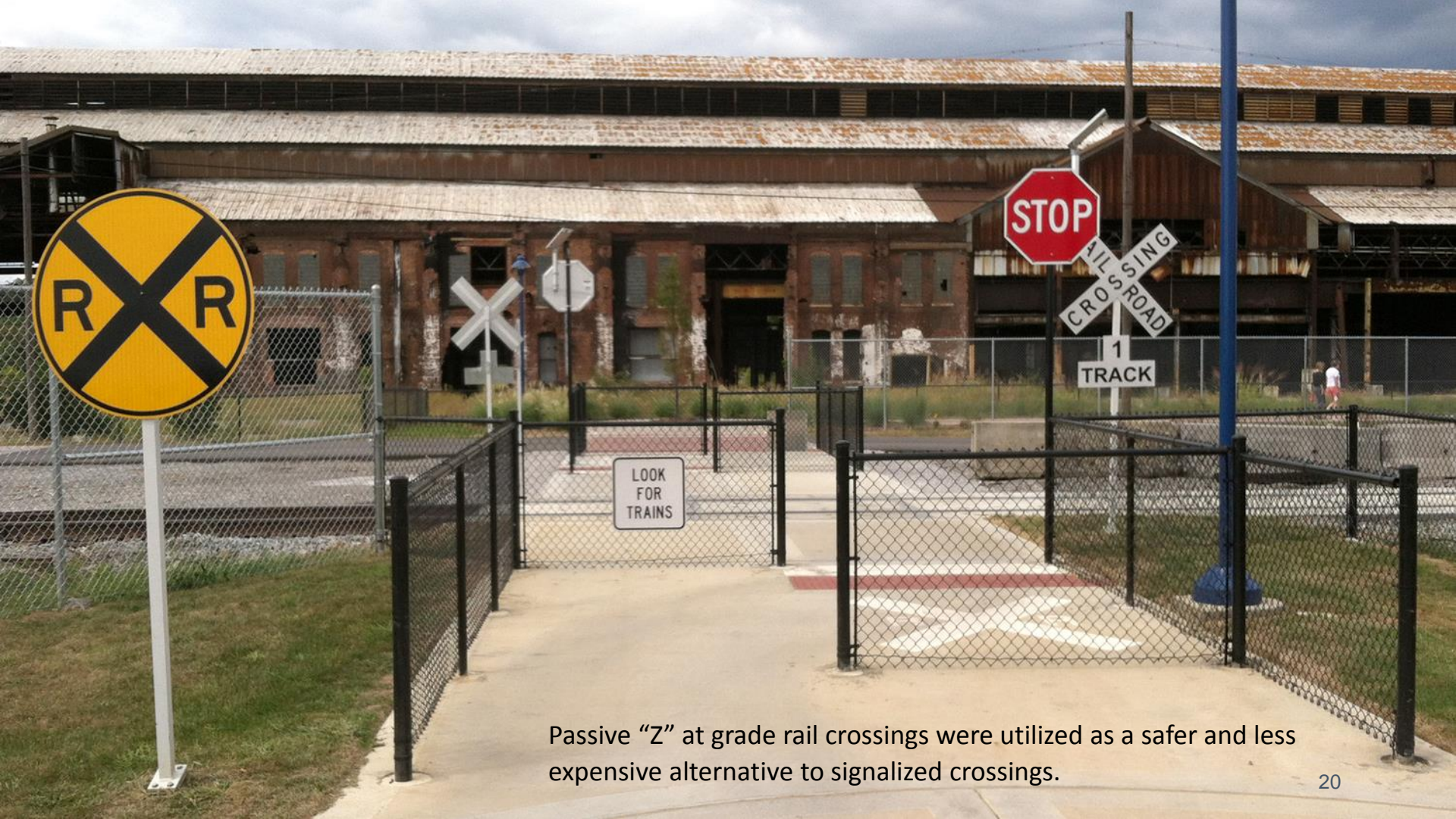
The Riverwalk extension is a 12-foot-wide highly detailed multi-use pathway that serves as a valuable alternative transportation commuter connection between downtown Chattanooga and communities south of Chattanooga.



The trail route in this latest extension followed the River behind active and vacant industrial facilities including Wheland Foundry, U.S. Pipe, PSC Metals, and Alstom/General Electric, posing unique design challenges.



The Riverpark extension provides a safe and enjoyable pedestrian corridor for Riverwalk users.



Passive “Z” at grade rail crossings were utilized as a safer and less expensive alternative to signalized crossings.

QUESTIONS?



John R. Brown

Senior Landscape Architect

1110 Market Street, Suite 200

Chattanooga, TN 37402

423-756-3025

John.Brown@bargedesign.Com