

# 2026 Tennessee Annual Monitoring Network Plan

Tennessee Department of Environment and Conservation  
Air Pollution Control Division



July 1, 2026

## **Authors**

Jason Stephens

*Environmental Consultant*

Bradley King

*Environmental Manager*

Kyle Spangle

*Senior Environmental Consultant*

## Table of Contents

Authors.....	2
Table of Contents .....	3
Annual Air Monitoring Network Plan Acronym Glossary .....	7
Introduction to the 2025 Annual Monitoring Network Plan for Tennessee .....	8
Changes to Tennessee’s Ambient Air Monitoring Network .....	10
Special Projects .....	12
Tennessee Air Quality Sensor Evaluation .....	12
The Purpose of Tennessee’s Ambient Air Monitoring Network .....	13
Air Quality Index Reporting .....	13
PM <sub>2.5</sub> Monitoring .....	14
PM <sub>2.5</sub> Continuous Monitoring.....	15
PM <sub>2.5</sub> Background and Transport Sites .....	16
PM <sub>10</sub> Monitoring.....	16
Ozone Monitoring.....	16
Carbon Monoxide (CO) Monitoring .....	17
Nitrogen Dioxide (NO <sub>2</sub> ) Monitoring .....	18
SO <sub>2</sub> Monitors .....	18
Lead (Pb) Monitoring:.....	19
National Core Monitoring Station.....	19
Near-Road Monitors:.....	19
Prevention of Significant Deterioration (PSD) monitoring: .....	20
Clean Air Status and Trends Network (CASTNET).....	20
PM <sub>2.5</sub> Chemical Speciation Network (CSN) .....	20
Photochemical Assessment Monitoring Station (PAMS) .....	21
Siting Waivers.....	22
Monitoring Sites and Discussion .....	24
Freels Bend – Anderson County .....	25
Maryville – Blount County.....	26
Dyersburg – Dyer County.....	27
New Market – Jefferson County .....	28
Loretto – Lawrence County .....	29

Loudon – Loudon County .....	30
Athens – McMinn County.....	31
Jackson – Madison County.....	32
Columbia – Maury County .....	33
Clarksville – Montgomery County.....	34
Cookeville Cane Creek – Putnam County .....	35
Cookeville (Inactive) – Putnam County.....	36
Harriman – Roane County .....	37
Kingsport (PM <sub>2.5</sub> ) – Sullivan County .....	38
Blountville – Sullivan County .....	39
Kingsport O <sub>3</sub> – Sullivan County .....	40
Exide – Sullivan County .....	41
Ross N Robinson – Sullivan County.....	42
Skyland Dr. – Sullivan County.....	43
Andrew Johnson Elementary School – Sullivan County.....	44
Happy Hill – Sullivan County.....	45
Hendersonville - Sumner County .....	46
Cedars of Lebanon – Wilson County .....	48
National Park Service Monitors .....	49
Cades Cove – Blount County (GSM NP).....	50
Look Rock – Blount County (GSM NP).....	51
Cove Mountain – Sevier Country (GSM NP).....	52
Clingman’s Dome – Sevier County (GSM NP) .....	53
Tennessee Geographic Regions, Descriptions and Climate.....	54
Tennessee Climate .....	54
Map of Tennessee Geographic Regions .....	55
3-Yr (2022-2025) Wind Rose Data for 10 TN Area ASOS Stations .....	56
Appendix A: Tennessee Monitoring Site Agreement Letters .....	68
Kentucky.....	68
Kentucky Response.....	70
Virginia.....	72
Virginia Response.....	74
Shelby County – TN - AR – MS .....	75

Arkansas Response.....	80
Mississippi Response.....	81
Appendix B: Sections of the CFR Referred to in the 2026 AMNP.....	82
Appendix C: Monitoring Network Requirements.....	86
Ozone Monitoring Network Requirements.....	86
CO Monitoring Network Requirements.....	86
NO <sub>2</sub> Monitoring Network Requirements.....	87
SO <sub>2</sub> Monitoring Network Requirements.....	87
Lead Monitoring Network Requirements.....	89
PM <sub>2.5</sub> Monitoring Network Requirements.....	90
PM <sub>10</sub> Monitoring Network Requirements.....	92
Index reporting requirements.....	93
NCore Monitoring Network Requirements and PM <sub>10-2.5</sub> .....	93
Coarse Particulate Matter (PM <sub>10-2.5</sub> ) Design Criteria.....	94
Appendix D: TDEC-DAPC Monitor Maps.....	95
All Monitoring Sites Operated by TDEC-DAPC and the National Park Service.....	95
PM <sub>2.5</sub> Monitor Locations.....	95
Ozone Monitor Locations.....	96
SO <sub>2</sub> Monitor Locations.....	96
Appendix E: Annual Monitoring Site Evaluations and Documentation.....	98
Appendix F: Tennessee 2025 Annual Ongoing Data Requirements Report.....	99

**List of Tables**

Table 1: CASTNET Sites in Tennessee Areas..... 20

Table 2: Tennessee Metropolitan Statistical Areas and Population Estimates ..... 57

Table 3: Tennessee Micropolitan Statistical Areas and Population Estimates ..... 58

Table 4: Tennessee County Population Data Trends..... 59

Table 5: TDEC-DAPC Interpretation of the PWEI SO<sub>2</sub> Monitoring Requirements ..... 88

## Annual Air Monitoring Network Plan Acronym Glossary

AADT.....	Annual Average Daily Traffic
AMNP.....	Annual Monitoring Network Plan
AQI.....	Air Quality Index
AQS.....	Air Quality Subsystem
BAM.....	Beta Attenuation Monitor
CASTNET.....	Clean Air Status and Trends Network
CBSA.....	Core-Based Statistical Area
CFR.....	Code of Federal Regulations
CO.....	Carbon Monoxide
DAPC.....	Division of Air Pollution Control
DRR.....	Data Requirements Report
DV.....	Design Value
EFO.....	Environmental Field Office
EPA.....	Environmental Protection Agency
ERT.....	Environmental Response Trust
FEM.....	Federal Equivalent Method
FRM.....	Federal Reference Method
µg/m3.....	Micro Grams per Cubic Meters
MSA.....	Metropolitan Statistical Area
NAAQS.....	National Ambient Air Quality Standards
NCO.....	Nashville Central Office
NCore.....	National Core Monitoring Station
NEI.....	National Emissions Inventory
NFO.....	Nashville Field Office
NPS.....	National Park Service
NO <sub>2</sub> .....	Nitrogen Dioxide
NO <sub>x</sub> .....	Nitrogen Oxides
NO <sub>y</sub> .....	Reactive Oxides of Nitrogen
O <sub>3</sub> .....	Ozone
PAMS.....	Photochemical Assessment Monitoring Station
Pb.....	Lead
PM <sub>2.5</sub> .....	Particles with an average aerodynamic diameter of 2.5 microns or less
PM <sub>10</sub> .....	Particles with an average aerodynamic diameter of 10 microns or less
PWEI.....	Population Weighted Emission Index
POC.....	Parameter Occurrence Code
ppb.....	Parts Per Billion
ppm.....	Parts Per Million
PQAO.....	Primary Quality Assurance Organization
PSD.....	Prevention of Significant Deterioration
SLAMS.....	State and Local Air Monitoring Stations
SO <sub>2</sub> .....	Sulfur Dioxide
SPM.....	Special Purpose Monitor
TEOM.....	Tapered Element Oscillating Microbalance
TDEC.....	Tennessee Department of Environment and Conservation
Tpy.....	Tons per year
TVA.....	Tennessee Valley Authority

## Introduction to the 2025 Annual Monitoring Network Plan for Tennessee

The annual monitoring network plan (AMNP) that is presented in the following pages will address each of the requirements specified in the Code of Federal Regulations (CFR). An overview of the geography, general climate, wind patterns, and population trends is included to provide background information that will help the reader understand the current air monitoring network and the reasons for the placement of the existing monitoring sites. The actual regulatory requirements that specify the number and arrangement of air monitoring sites are found in 40 CFR 58. The sections that provide this guidance are also included in the report to help better understand the actual monitoring needs in each area.

In many instances, the areas for which monitoring is required are based on population criteria in which population must be considered to allow for monitoring in the areas where people may be affected or exposed to the various criteria pollutants of concern. Additional monitoring sites are needed to address impacts to communities where source-related emission density might be elevated. Other considerations must also be addressed when selecting and operating air monitoring sites. The local influences of some types of sources (roadway dust or emissions) may be factors that require monitoring sites to be spaced certain distances from those sources. In near-road or roadway monitoring activities, the monitors must be located very close to the potential sources of mobile emissions.

The Tennessee Department of Environment and Conservation (TDEC) is committed to protecting the state's natural resources and ensuring all Tennesseans, including those in rural or [distressed counties](#) have access to clean air, land, and water. We provide support through grant programs, technical assistance, and infrastructure investment to respond to communities facing unique challenges such as limited infrastructure and access to funding. TDEC is committed to ensuring all Tennesseans are efficiently and effectively served by their government. As such, we continue to evaluate how our programs impact Tennesseans and actively partner with local stakeholders to strengthen environmental health, economic prosperity, and quality of life for all of Tennessee.

The principal areas in Tennessee with air monitoring sites are depicted with a graphic showing each of the monitoring sites' locations. The sites are further identified with a site number, an Air Quality Site Identification (AQSID), and the types of pollutants being monitored at each location. Tables containing the relevant information for each site are also included. The tables are provided in two sections following the location graphic and can be found within each area's section of the report and relieve the reader from searching tables at the end of the report for information about a given site.

Each of the four local programs operating an air monitoring network in Tennessee provided a separate annual review. The local program's annual monitoring network plan will be submitted at the same time as the State of Tennessee's annual air monitoring network plan. Where revisions were noted in the local networks, those revisions were added to the State's overall plan.

The State of Tennessee is required to evaluate the ambient air monitoring network each year in accordance with 40 CFR 58.10. Based on this evaluation, all monitoring sites were found to meet the applicable requirements of 40 CFR Part 58 Appendices A, B, C, D, and E.

The National Park Service (NPS) operates several air monitoring sites within Great Smoky Mountains National Park (GSMNP) and is responsible for generating, reviewing, and validating the data produced by these monitoring sites. The Environmental Protection Agency (EPA) has determined that these sites fall under the Primary Quality

Assurance Organization (PQAO) oversight of the NPS and are therefore the responsibility of the NPS. As a courtesy, TDEC-DAPC provides an overview of these sites in the Tennessee Annual Monitoring Network Plan.

## Changes to Tennessee's Ambient Air Monitoring Network

The Tennessee Department of Environment and Conservation, Division of Air Pollution Control (TDEC-DAPC), has relocated the Cookeville PM<sub>2.5</sub> Special Purpose Monitor (SPM) air monitoring site (47-141-0005) in Putnam County, Tennessee. The original site supported ambient PM<sub>2.5</sub> monitoring beginning August 15, 2006, and is located east of Nashville on the Highland Rim near the Cumberland Plateau. Although the site is not located within or near a Metropolitan Statistical Area (MSA), it is situated within one of Tennessee's largest micropolitan statistical areas and provides important regional PM<sub>2.5</sub> monitoring coverage for the Upper Cumberland area.

The Cookeville PM<sub>2.5</sub> air monitoring site (47-141-0005) was relocated because the existing host property was sold and long-term site access could no longer be secured. In addition, obstructions on adjacent property prevented the location from meeting the siting criteria specified in 40 CFR Part 58 Appendix E, which requires the sampler inlet to maintain adequate unrestricted airflow, including a continuous 270-degree arc free from nearby obstructions.



*Cookeville Cane Creek PM<sub>2.5</sub> Site Location*

To maintain PM<sub>2.5</sub> monitoring coverage in the area, TDEC-DAPC has relocated the Cookeville SPM PM<sub>2.5</sub> monitoring site approximately 2.6 miles to its new location at the Cane Creek Elementary School. The new site meets applicable siting and probe placement criteria specified in 40 CFR Part 58 Appendix E and provides a suitable location continued monitoring of ambient PM<sub>2.5</sub> concentrations within the Cookeville micropolitan area. Similar to the previous location, the new site is not located in or near an MSA but remains within one of Tennessee's largest micropolitan statistical areas.



*Cookeville Cane Creek PM2.5 Site Photo*

The Cookeville Cane Creek PM2.5 monitoring site (47-141-0006) became operational on April 1, 2026, and will continue to support TDEC-DAPC’s ambient air monitoring objectives by providing PM2.5 concentration data for regional trend evaluation, public information, and supplemental spatial coverage within the Upper Cumberland region. Monitoring operations, quality assurance procedures, and data reporting activities will continue in accordance with applicable federal monitoring requirements and TDEC-DAPC quality assurance procedures.

Cookeville Cane Creek PM2.5 Site Information:

Address	1500 W Jackson St, Cookeville, TN 38501
AQSID	47-141-0006
CBSA	18260
Lat, Lon	36.16304, -85.52908
Parameter Code	88101
Parameter Name	PM <sub>2.5</sub> Continuous
Monitor Type	SPM
POC	3
Int	1
Collection Frequency	Hourly
Method	209
FRM/FEM Instrument	Met One BAM 1022
Analysis	Real Time Beta Attenuation Mass Monitor
Ref Mtd ID	EQPM-1013-209
Monitor Objective	Population Exposure
Dominant Source	Area
Measurement Scale	Neighborhood
Land Use Type	Residential
Location Setting	Suburban

## Special Projects

### Tennessee Air Quality Sensor Evaluation

The Tennessee Department of Environment and Conservation-Division of Air Pollution Control (TDEC-DAPC) conducted a study on small sensor technologies for air quality characterization. The study tested PM<sub>2.5</sub> and gaseous sensors, finding high data recovery and no major sensor degradation after one year. PurpleAir PM<sub>2.5</sub> sensors showed good agreement with the PM<sub>2.5</sub> FEM monitor after data adjustments, suggesting potential for quantitative air quality applications. For more information on the results of the *TDEC-DAPC Air Quality Sensors Evaluation*, please visit our [StoryMap](#).

TDEC-DAPC plans to continue sensor technology research and is currently utilizing an expanded network of Clarity and PurpleAir sensors for increased PM<sub>2.5</sub> AQI coverage and collocation with regulatory PM monitors across the state.

Data from our sensor network is available to the public on the [PurpleAir website](#), [AirNow's Fire & Smoke map](#), and the [Tennessee Air Quality Sensor Network Map](#).

## The Purpose of Tennessee's Ambient Air Monitoring Network

There are several criteria used to determine the need for ambient air quality monitoring. These criteria are as follows:

- EPA National Ambient Air Quality Standards (NAAQS) criteria pollutants monitoring network requirements for the NCore, formally NAMS (National Air Monitoring Site); SLAMS (State and Local Air Monitoring Stations); and SPM (Special Purpose Monitoring) monitoring networks can be found in 40 CFR Appendix D to Part 58.
- The CFR sets forth regulations for air quality monitoring requirements implemented by the states and the EPA. These requirements are primarily organized around population and emission density in each area with the number of monitors required and the monitors' distribution within the networks specified by these regulations. Additionally, 40 CFR, Part 58, Appendix D specifies criteria for designing the NCore and SLAMS networks. The EPA must approve the design or modifications to these networks.
- Additional federal regulations also specify requirements for the Prevention of Significant Deterioration (PSD) monitoring networks. This monitoring requirement is triggered as part of a PSD permit application review. There is no representative contemporaneous ambient air quality data for the area near the proposed PSD source site. Under these criteria, either pre or post-construction monitoring may be required to be conducted in the area near the facility, likely to be impacted (as determined by modeling) by emissions.
- Air quality monitoring must be conducted to alert citizens in given areas to elevated air pollutants in cities or communities of designated population levels required to provide Air Quality Index (AQI) reports to the general public.
- Conducting air quality monitoring will address the need for background air quality data.
- Special air quality monitoring studies are conducted based on identified needs for monitoring data in each area.
- Citizen complaints and enforcement investigations related to air quality are other reasons for air quality monitoring, usually in or around a specific area related to the complaint or investigation.
- Where warranted, requests from citizens for special air monitoring studies are also reasons for air monitoring activities.
- The federal regulations also specify the frequency, method, location requirements, equipment, quality assurance procedures, and reporting of data collected from the ambient air monitoring networks.

Pollutant-specific requirements for establishing the need for ambient monitoring and the number of required monitors are found in Appendix C. Currently, all areas in Tennessee and Tennessee's CBSAs are fulfilling the requirements for operating each type of ambient monitor(s) as well as the requirements for reporting the AQI. This is being accomplished through a joint effort by the State of Tennessee and other agencies located within the state and its CBSAs.

The following sections detail how the various requirements found in 40 CFR Part 58 are being met and, when relevant, by which criteria pollutant monitors. Individual monitors listed may belong to the State of Tennessee or other agencies' operating monitors in the state and its multi-state CBSAs.

### Air Quality Index Reporting

The following table demonstrates how Tennessee meets the minimum requirements for AQI reporting for particles with an average aerodynamic diameter of 2.5 microns or less (PM<sub>2.5</sub>) and O<sub>3</sub> (ozone):

Metropolitan Statistical Area	2020 Census	2025 Census Est.	Required to Have AQI Reporting	Daily AQI/Air Quality Forecasts Provided
Chattanooga, TN-GA	562,648	594,530	Yes	Yes
Clarksville, TN-KY	320,518	349,001	No	Yes
Cleveland, TN	126,164	134,057	No	No
Jackson, TN	180,500	183,680	No	No
Johnson City, TN	207,276	216,416	No	Yes, based on the combined population of both areas.
Kingsport-Bristol, TN-VA	307,610	314,834	No	
Knoxville, TN	903,322	968,137	Yes	Yes, in addition, the GSMNP has a separate AQI/Forecast provided.
Memphis, TN-MS-AR	1,345,436	1,341,415	Yes	Yes
Morristown, TN	119,182	128,867	No	Not specifically but is included in the Knoxville forecast.
Nashville-Davidson—Murfreesboro—Franklin, TN	2,014,420	2,197,416	Yes	Yes

### PM<sub>2.5</sub> Monitoring

The following table lists the currently active PM<sub>2.5</sub> SLAMS monitoring sites that fulfill the minimum PM<sub>2.5</sub> requirements found in 40 CFR Part 58, Appendix D for all MSAs in the state:

Metropolitan Statistical Area	Required Number of Monitors	Monitors (AQSID)
Chattanooga, TN-GA CBSA# 16860	2	13-295-0004 <sup>1,2</sup>
		47-065-4002 <sup>1</sup>
Clarksville, TN-KY CBSA # 17300	1	47-125-2001
		21-47-0007
Jackson, TN CBSA # 27180	0	47-113-0010
Kingsport, TN-VA CBSA #28700	0	47-163-1007
		51-520-0006
Knoxville, TN CBSA# 28940	2	47-093-1013 <sup>1</sup>
		47-093-1020
		47-093-1017 <sup>1</sup>
		47-105-0109 <sup>1</sup>
Memphis, TN-AR-MS CBSA# 32820	3	05-035-0005
		28-033-0002
		47-157-0024 <sup>1</sup>
		47-157-0075 <sup>1</sup>
		47-157-0100
Nashville, TN CBSA# 34980	3	47-037-0023 <sup>1</sup>
		47-037-0040

		47-165-0007 <sup>1</sup>
--	--	--------------------------

<sup>1</sup> Site operates a collocated FEM/FRM monitor

<sup>2</sup> Relocated site was formerly 13-295-0002

**PM<sub>2.5</sub> Continuous Monitoring**

The following table lists the currently active PM<sub>2.5</sub> monitoring sites that fulfill the minimum continuous PM<sub>2.5</sub> requirements found in 40 CFR Part 58, Appendix D for all MSAs in the state:

<b>Core-Based Statistical Area</b>	<b>Required Number of Monitors</b>	<b>Monitors (AQSID)</b>
Chattanooga, TN-GA CBSA # 16860	1	13-295-0004 <sup>1,2</sup>
		47-065-4002 <sup>1</sup>
Athens, TN CBSA # 11940	0	47-107-1002
Clarksville, TN-KY CBSA # 17300	1	47-125-2001
		21-47-0007
Cookeville, TN CBSA # 18260	0	47-141-0005
Dyersburg CBSA # 20540	0	47-045-0004
Jackson, TN CBSA # 27180	0	47-113-0010
Kingsport, TN-VA CBSA #28700	0	47-163-1007
Lawrenceburg, TN CBSA # 29980	0	47-099-0003
Knoxville, TN CBSA # 28940	1	47-009-0011 <sup>3</sup>
		47-105-0004 <sup>3</sup>
		47-105-0109 <sup>1</sup>
		47-093-1013 <sup>1</sup>
		47-093-1017 <sup>1</sup>
Memphis, TN-AR-MS CBSA # 32820	2	47-093-1020
		28-033-0002
		47-157-0075 <sup>1</sup>
Nashville, TN CBSA # 34980	2	05-035-0005 <sup>1</sup>
		47-037-0023 <sup>1</sup>
		47-037-0040
		47-119-2007 <sup>3</sup>
		47-165-0007 <sup>1</sup>

<sup>1</sup> Site operates a collocated FEM/FRM monitor.

<sup>2</sup> Relocated site was formerly 13-295-0002

<sup>3</sup>Non-SLAMS monitor

## PM2.5 Background and Transport Sites

The following sites meet the requirement for the State's operation of 1 background and 1 regional transport site:

Metropolitan Statistical Area	Required Number of Monitors	Monitors (AQSID)
Background	1	47-099-0003
Regional Transport	1	47-009-0101

## PM<sub>10</sub> Monitoring

PM<sub>10</sub> monitoring is currently being conducted by Nashville's Metro Public Health Department of Davidson County, the Shelby County Health Department in Memphis, and the Knox County Health Department. There are no collocation requirements for PM<sub>10</sub> in the state. The minimum requirements for PM<sub>10</sub> monitoring are met by a combination of EPA waivers and by the following SLAMS sites:

Metropolitan Statistical Area	Required Number of Monitors	Monitors (AQSID)
Chattanooga, TN-GA CBSA# 16860	1	Waived
Knoxville, TN CBSA# 28940	1	47-093-1013
Memphis, TN-AR-MS CBSA# 32820	2	47-157-0024
		47-157-0075
Nashville, TN CBSA# 34980	2	47-037-0023
		Waived

## Ozone Monitoring

TDEC-DAPC operates eight ozone monitoring sites. Information that is more detailed can be found in Appendix E0. The following table outlines the monitors that satisfy the minimum number of ozone SLAMS monitors required by 40 CFR Part 58, Appendix D, Section 4.1 in each MSA:

Metropolitan Statistical Area	Required Number of Monitors	Monitors (AQSID)
Chattanooga, TN-GA CBSA# 16860	2	47-065-1011
		47-065-4003
Clarksville, TN-KY CBSA# 17300	1	21-047-0006
Kingsport-Bristol-Bristol, TN-VA CBSA# 28700	1	47-163-2002
		47-163-2003

Metropolitan Statistical Area	Required Number of Monitors	Monitors (AQSID)
Knoxville, TN CBSA# 28940	2	47-001-0101
		47-009-0101
		47-009-0102 <sup>1,2</sup>
		47-093-0021
		47-093-1020
		47-105-0109
Morristown, TN CBSA# 34100	1	47-089-0002
Memphis, TN-AR-MS CBSA# 32820	2	05-035-0005
		28-033-0002
		47-157-0021
		47-157-0075
		47-157-1004
		47-157-0010 <sup>3</sup>
Nashville, TN CBSA# 34980	2	47-037-0011
		47-037-0026
		47-165-0007
		47-187-0106
		47-189-0103
Sevierville, TN CBSA# 42940	1	47-155-0101 <sup>1,2</sup>
		47-155-0102 <sup>1,2</sup>

<sup>1</sup>Non-SLAMS monitor

<sup>2</sup>Site operated by the National Park Service

<sup>3</sup>Shelby County Riverview site expected to begin operation on July 1, 2026

### Carbon Monoxide (CO) Monitoring

The requirement for CO SLAMS near-road monitoring is met in the Nashville CBSA by the CO monitor operating at the near-road site and in the Memphis, TN-AR-MS CBSA as outlined below:

Metropolitan Statistical Area	Required Number of Monitors	Monitors (AQSID)
Memphis, TN-AR-MS CBSA# 32820	1	47-157-0010 <sup>1</sup>
		47-157-0100
Nashville, TN CBSA# 34980	1	47-037-0040

<sup>1</sup>Shelby County Riverview site expected to begin operation on July 1, 2026

## Nitrogen Dioxide (NO<sub>2</sub>) Monitoring

NO<sub>2</sub> SLAMS monitoring requirements for operating near-road monitors are met for both the Nashville and the Memphis, TN-AR-MS CBSAs, as detailed below:

Metropolitan Statistical Area	Required Number of Near-Road Monitors	Monitors (AQSID)
Memphis, TN-AR-MS CBSA# 32820	1	47-157-0100
Nashville, TN CBSA# 34980	1	47-037-0040

Area-wide NO<sub>2</sub> monitoring is also met in the same CBSAs, where the State of Arkansas operates the area-wide NO<sub>2</sub> monitor to satisfy the requirements for the Memphis, TN-AR-MS requirement. This site is operated as agreed to in a memorandum of agreement between Memphis and the states of Arkansas and Mississippi; the required sites are listed below:

Metropolitan Statistical Area	Required Number of Area-Wide Monitors	Monitors (AQSID)
Memphis, TN-AR-MS CBSA# 32820	1	05-035-0005
Nashville, TN CBSA# 34980	1	47-037-0011

## SO<sub>2</sub> Monitors

The minimum number of SO<sub>2</sub> monitors is determined by calculating the population weighted emissions index (PWEI) for each CBSA as defined in 40 CFR Part 58, Appendix D, Section 4.4 and detailed in Table 5. The following monitors satisfy the PWEI requirements for all CBSAs in the state:

Metropolitan Statistical Area	Required Number of PWEI Monitors	Monitors (AQSID)
Kingsport-Bristol-Bristol, TN-VA CBSA# 28700	1 <sup>1</sup>	47-163-6001
Memphis, TN-AR-MS CBSA# 32820	0	47-157-0075
Nashville, TN CBSA# 34980	0	47-037-0040

<sup>1</sup>PWEI monitor is required by the Regional Administrator (RA) not by the calculated PWEI

The Regional Administrator may require additional monitoring stations per 40 CFR Part 58, Appendix D Sec. 4.4.3. These additional monitors may be required in areas that have the potential to violate or contribute to the violation of the NAAQS, in areas not suitable for modeling, or in areas with susceptible and vulnerable populations, which are not monitored under the PWEI requirements.

The Region 4 Administrator has required the State to operate an enhanced SO<sub>2</sub> monitoring network of 1 PWEI site and 3 additional sites within the 2010 1-hr SO<sub>2</sub> NAAQS nonattainment area in the Kingsport-Bristol-Bristol, TN-VA CBSA.

Metropolitan Statistical Area	Required Number of RA Monitors	Monitors (AQSID)
Kingsport-Bristol-Bristol, TN-VA CBSA# 28700	3	47-163-6002
		47-163-6003
		47-163-6004

**Lead (Pb) Monitoring:**

The State operates a single lead monitoring site in Sullivan County, Tennessee near the currently shutdown Exide facility. This site is located within the boundary of the current Bristol lead maintenance area. The State is also required to operate a source-oriented lead sampler at the Commercial Metals Company (CMC) Steel US plant, formally Gerdau in Knoxville. This monitoring is being conducted by the Knox County Health Department. The requirements for lead sampling are met by the following sites:

Source	Required Number of Monitors	Monitors (AQSID)
Exide, Sullivan County	1	47-163-3004 <sup>1</sup>
CMC Steel Plant, Knox County	1	47-093-0023

<sup>1</sup>Site operates a collocated monitor

**National Core Monitoring Station**

In October 2006, the United States EPA established the National Core (NCore) multi-pollutant monitoring network in its final amendments to the ambient air monitoring regulations for criteria pollutants (codified in 40 CFR parts 53 and 58). It is the expectation that each state will have at least one NCore site. Nationwide, approximately 50 sites will be in urban locations and 20 sites in rural areas. The multi-pollutant monitoring approach at NCore sites will benefit health assessments, emissions strategy development, and future monitoring efforts. By providing data users, such as researchers and policymakers, with a robust suite of collocated pollutants and meteorological data, NCore sites will better characterize the numerous chemical and physical interactions between pollutants than what is traditionally available at compliance-oriented monitoring sites. Shelby County operates the only required NCore site in Tennessee. The Shelby County AMNP details this site. The Look Rock rural NCore site is an optional site operated by NPS.

**Near-Road Monitors:**

There are currently two near-road sites in Tennessee and operated in local program counties (Davidson and Shelby). The near-road monitoring network was initiated as part of the 2010 NO<sub>2</sub> NAAQS review and has become

a multi-pollutant (CO, NO<sub>2</sub>, NO, NO<sub>x</sub>, PM<sub>2.5</sub>) monitoring network. In cooperation with state, local, and tribal air agencies, the EPA has tracked the installation of near-road NO<sub>2</sub> monitoring stations across the country. As part of this effort, the EPA has created a list of sites and captured critical meta-data about their target roads and general operations. Additional information on near-road monitoring networks can be found at <https://www.epa.gov/amtic/no2-monitoring-near-road-monitoring> and in the Monitoring Network Requirements found in Appendix C.

**Prevention of Significant Deterioration (PSD) monitoring:**

The Prevention of Significant Deterioration (PSD) permitting program is a Clean Air Act preconstruction review program for new and modified major stationary sources of air pollution (e.g., power plants, manufacturing facilities). The program requires that the area where the source is located be classified as either in attainment or unclassifiable with the National Ambient Air Quality Standards (NAAQS). The NAAQS establishes maximum pollution concentration levels to protect public health and welfare from harmful levels of nitrogen oxides, ozone, sulfur dioxide, particulates, carbon monoxide, and lead. A PSD increment is the maximum allowable increase in concentration towards the NAAQS from the baseline concentration for a pollutant. The baseline concentration is set for each existing pollutant at the time that the first complete PSD permit application affecting the area is submitted. PSD increments prevent the air quality in clean areas from completely consuming remaining air quality to the level set by the NAAQS. This monitoring requirement is triggered when there is insufficient ambient air quality data necessary to determine compliance with the NAAQS. Under these criteria, either pre or post construction monitoring may be required to be conducted in the area near the facility being constructed.

Currently, TDEC-DAPC does not operate any PSD monitors.

**Clean Air Status and Trends Network (CASTNET)**

The Clean Air Status and Trends Network (CASTNET) monitoring network is designed to measure air quality in rural areas year-round. CASTNET sites in Tennessee and the state’s metropolitan statistical areas (MSAs) are managed by the EPA’s Clean Air Markets Division and operated by an EPA contractor. There are three CASTNET sites in rural areas of Tennessee and Kentucky. The three CASTNET sites in Tennessee are as follows:

**Table 1: CASTNET Sites in Tennessee Areas**

Site	AQSID	County	Location	2023 to 2025 Ozone DV (ppm)
Edgar Evins (ESP127)	47-041-9991	DeKalb	Edgar Evins State Park, Smithville, TN 37166	0.062
Speedwell (SPD111)	47-025-9991	Claiborne	718 Russell Hill Rd, Speedwell, TN 37870	0.061
Look Rock (GRS420)	47-009-0101	Blount	Great Smoky Mountains National Park	0.066

**PM<sub>2.5</sub> Chemical Speciation Network (CSN)**

The PM<sub>2.5</sub> Chemical Speciation Network is operated in accordance with 40 CFR Part 58, Appendix D Sec 4.7.4, where the requirement for CSN monitors is as follows:

Each State shall continue to conduct chemical speciation monitoring and analyses at sites designated to be part of the PM<sub>2.5</sub> Speciation Trends Network (STN). The selection and modification of these STN sites must be approved by the Administrator. The PM 2.5 chemical speciation urban trends sites shall include analysis for elements, selected anions and cations, and carbon.

The EPA currently funds three CSN sites in Tennessee’s CBSAs:

<b>Metropolitan Statistical Area</b>	<b>CSN Monitors (AQSID)</b>
Chattanooga, TN-GA CBSA# 16860	13-295-0004 <sup>1</sup>
Knoxville, TN CBSA# 28940	47-093-1017 <sup>2</sup>
Memphis, TN-AR-MS CBSA# 32820	47-157-0075

<sup>1</sup>Relocated site was formerly 47-295-0002

<sup>2</sup>CSN site was previously located at site 47-093-1020

**Photochemical Assessment Monitoring Station (PAMS)**

The EPA’s PAMS program began in the 1990s and was revised during the 2015 ozone NAAQS review. These revisions called for ozone precursor monitoring to be conducted during peak months (June-August) at NCore sites in CBSA’s with populations ≥ 1 million. The number of required PAMS sites in the US was lowered from 75 to 43, with 16 of those being new PAMS sites. The NCore site in the Memphis CBSA (47-157-0075) is one of the required new PAMS sites. To meet the requirements in the regulations promulgated in October 2015, all PAMS Required Sites were to be operational and reporting quality assured and validated data for the required parameters to the EPA’s Air Quality System by June 1, 2019. Due to a number of issues related to the startup of PAMS, the new start date was postponed to June 2021. Beginning June 1, 2021, the Shelby County Health Department Air Monitoring Branch began PAMS monitoring at the NCore site in the Memphis CBSA (47-157-0075).

## Siting Waivers

The defined monitoring objective largely determines the general location for the placement of air quality monitors. In addition, 40 CFR Part 58, Appendix E, contains specific location criteria applicable to ambient air quality monitoring probes, inlets, and optical paths of SLAMS, NCore, PAMS, and other monitor types whose data are intended to be used to determine compliance with the NAAQS. These specific criteria are relevant after the general location has been selected based on the monitoring objective and are intended to ensure the uniform collection of compatible and comparable air quality data.

In some cases, minor deviations from these siting criteria may be unavoidable due to changes in site conditions or physical constraints. In such situations, a monitoring agency may submit a written waiver request to the EPA documenting the nature of the deviation, whether the monitoring data remain representative of the monitoring area, and why the site continues to meet its monitoring objective. EPA may approve continued operation of the site if the monitoring data are determined to remain useful, representative, and valid.

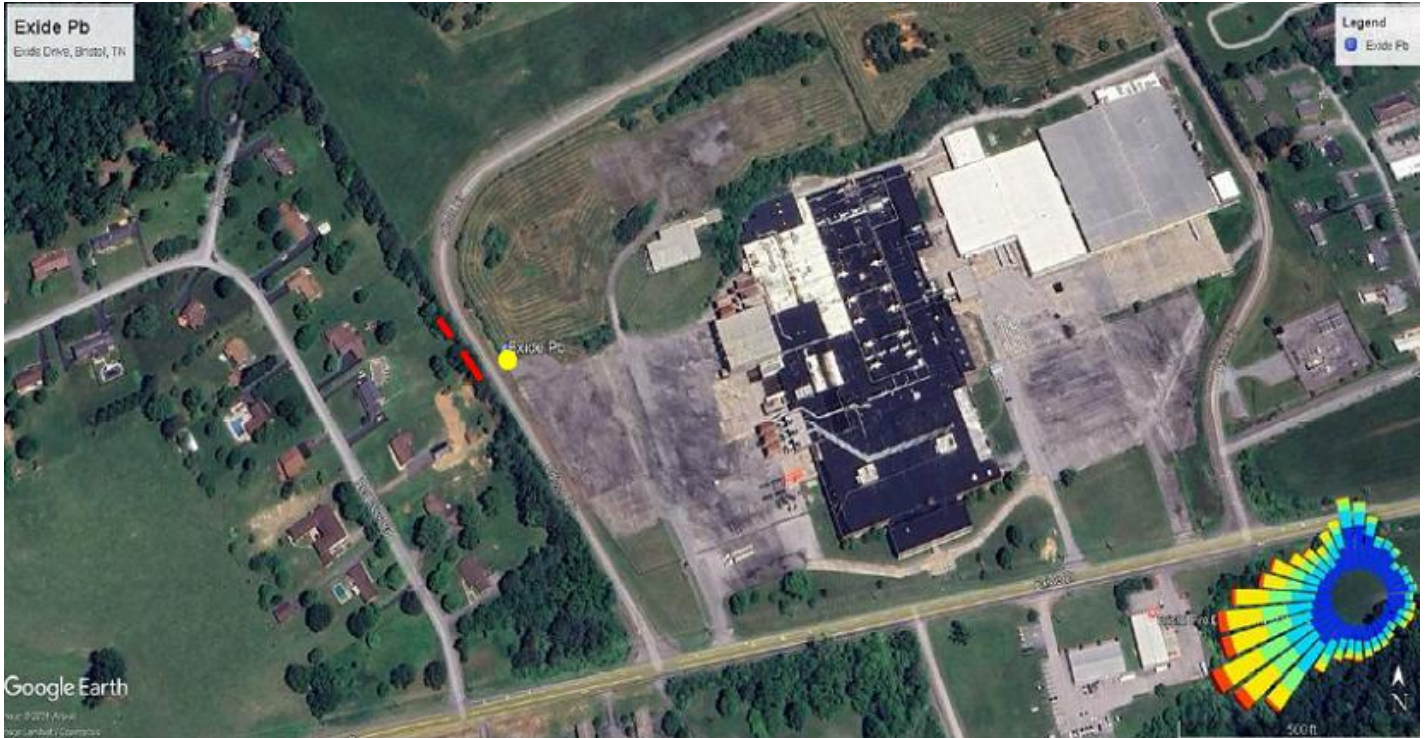
TDEC-DAPC currently operates the Exide Pb monitoring (47-163-3004) site in Sullivan County, Tennessee under an EPA approved siting waiver. The monitoring site is located at 364 Exide Drive in Bristol, Tennessee. The source-oriented monitoring site was established on January 1, 2010, to verify lead NAAQS compliance at the former Exide facility.

Address	364 Exide Drive, Bristol TN 37620	
AQSID	47-163-3004	
County Name	Sullivan	
CBSA	28700	
Lat, Lon	36.52443, -82.273296	
Parameter Code	14129	14129
Parameter Name	Pb	Pb
Monitor Type	SLAMS	SLAMS
POC	1 (Primary)	2 (Collocated)
Int	7	7
Collection Frequency	1 In 6	1 In 6
Method	193	193
FRM/FEM Instrument	Pb-TSP/ICP Spectra (ICP-MS)	Pb-TSP/ICP Spectra (ICP-MS)
Analysis	Inductively Coupled Plasma-Mass Spectrometry Acid Filter Extract with Hot Nitric Acid	Inductively Coupled Plasma-Mass Spectrometry Acid Filter Extract with Hot Nitric Acid
Ref Mtd ID	EQL-0512-201	EQL-0512-201
Monitor Objective	Source Oriented	
Dominant Source	Point	
Measurement Scale	Urban Scale	
Land Use Type	Industrial	
Location Setting	Urban and Center City	

On March 18, 2025, an annual site evaluation performed by TDEC-DAPC staff identified the site as being noncompliant with criteria listed in 40 CFR Part 58, Appendix E. Specifically, the monitoring site no longer has unrestricted airflow

with no obstructions in a continuous arc of at least 270 degrees due to tree growth on adjacent properties. However, the site maintains an unobstructed continuous arc exceeding 180 degrees, and there are no obstacles present between the Lead samplers and the source being monitored. Predominant wind direction is not included in the unobstructed arc.

The image below provides an overhead view of the facility along with the location of the ambient monitoring site (yellow dot) and the obstacles identified in the annual siting evaluation (red dash). The complete annual site evaluation document can be accessed for review in Appendix E.



Despite the siting nonconformity, the samplers at this site have proven effective at detecting pollutants associated with facility operations at the time of their installation and more recently during remediation activities. Additionally, this monitoring location was determined as the area of expected maximum concentration at the site. Therefore, this site continues to meet its source-oriented monitoring objective and provides useful, representative, and valid air quality data.

A siting waiver request was included in the 2025 Tennessee Ambient Monitoring Network Plan. Following EPA review, the waiver request was approved on October 10, 2025.

The site is expected to remain in operation until TDEC-DAPC can successfully petition the EPA for its removal.

Site	Waiver Approval Date	Criteria Waived
Exide Lead (47-163-3004)	October 10, 2025	Inlet must have unrestricted airflow with no obstructions in a continuous arc of at least 270 degrees.

## Monitoring Sites and Discussion

All sites operated by TDEC-DAPC comply with the siting criteria specified in Appendix E to 40 CFR Part 58 for probe and monitoring paths for PM<sub>2.5</sub>, O<sub>3</sub>, Pb, and SO<sub>2</sub>. These sites undergo annual reevaluation to ensure ongoing compliance with these criteria. As components of the State of Tennessee ambient air monitoring criteria pollutant network, the sites are managed to maintain adherence to the network design requirements outlined in Appendix D to 40 CFR Part 58. Documentation of current site evaluations, including photographs, distance measurements, and confirmation of compliance with siting criteria, is provided in Appendix E of this plan.

Particulate air monitoring sites that have changed PM<sub>2.5</sub> monitoring methods are presented collectively. These sites are categorized by their new and historical parameter occurrence codes (POCs). For PM<sub>2.5</sub> federal reference monitors (FRMs), POCs 1 and 2 are assigned, while federal equivalent PM<sub>2.5</sub> monitors (FEMs) use POCs 3 and 4.

TDEC DAPC Special Purpose Monitors (SPMs) operating Federal Reference Method (FRM) or Federal Equivalent Method (FEM) instruments that meet the applicable siting requirements of 40 CFR Part 58, Appendix E, and quality assurance requirements of 40 CFR Part 58, Appendix A, produce regulatory-quality ambient air monitoring data. Data from these monitors are submitted to EPA's Air Quality System (AQS) and are used, where appropriate, for regulatory purposes, including comparison to the National Ambient Air Quality Standards (NAAQS).

The Cookeville SPM PM<sub>2.5</sub> monitoring site was relocated in Spring 2026. The original Cookeville site ceased operation on March 31, 2026, and the new Cookeville site (Cane Creek Elementary School) began data collection on April 1, 2026.

### Freels Bend – Anderson County

Address	Freels Bend Study Area Melton Lake Oak Ridge
AQSID	47-001-0101
CBSA	28940
Lat, Lon	35.965504, -84.22319
Parameter Code	44201
Parameter Name	O <sub>3</sub>
Monitor Type	SLAMS
POC	1
Int	W
Collection Frequency	Hourly
Method	087
FRM/FEM Instrument	Model T400 Ozone Analyzer
Analysis	Ultraviolet Absorption
Ref Mtd ID	EQOA-0992-087
Monitor Objective	Population Exposure
Dominant Source	Area
Measurement Scale	Urban Scale
Land Use Type	Forest
Location Setting	Rural

The Freels Bend site is in Anderson County, Tennessee, and currently supports ambient air monitoring for ozone. The Freels Bend site was initially established in 1992 and is located west of Knoxville and southeast of Oak Ridge, Tennessee. This site is upwind of the core Knoxville MSA. This site serves to assess upwind ozone levels entering the Knoxville area. This site was determined to remain in operation for the next five years (2026 through 2030). This site is also used in the air quality index (AQI) forecasting program and is currently meeting the ozone standards.

This site was previously monitored for SO<sub>2</sub> in addition to ozone but due to changes in SO<sub>2</sub> monitoring requirements, TDEC-DAPC ended SO<sub>2</sub> monitoring on December 31, 2019.

### Maryville - Blount County

Address	2007 Sequoyah Avenue Maryville TN 37803
AQSID	47-009-0011
CBSA	28940
Lat, Lon	35.768847, -83.942152
Parameter Code	88101
Parameter Name	PM <sub>2.5</sub> Continuous
Monitor Type	SPM
POC	3
Int	1
Collection Frequency	Hourly
Method	209
FRM/FEM Instrument	Met One BAM 1022 FEM
Analysis	Real Time Beta Attenuation Mass Monitor
Ref Mtd ID	EQPM-1013-209
Monitor Objective	Population Exposure
Dominant Source	Area
Measurement Scale	Neighborhood
Land Use Type	Residential
Location Setting	Suburban

The Maryville site is in Blount County, Tennessee, and currently supports ambient air monitoring for fine particulate matter. This site is located south of Knoxville and northwest of the GSMNP. This site is upwind of the core Knoxville MSA. The Maryville PM<sub>2.5</sub> monitoring site began on May 1, 2000, as a part of the original PM<sub>2.5</sub> state network. Because of the importance of this site in assessing upwind PM<sub>2.5</sub> levels entering the Knoxville area, this site was determined to remain in operation for the next 5 years (2026 through 2030). This site is also used in the AQI forecasting program to help assess impacts from precursor transport into Tennessee from Georgia and North Carolina.

### Dyersburg - Dyer County

Address	175-B Greenwood Street, Dyersburg TN 38024
AQSID	47-045-0004
CBSA	20540
Lat, Lon	36.05266, -89.382157
Parameter Code	88101
Parameter Name	PM <sub>2.5</sub> Continuous
Monitor Type	SLAMS
POC	3
Int	1
Collection Frequency	Hourly
Method	209
FRM/FEM Instrument	Met One BAM 1022
Analysis	Real Time Beta Attenuation Mass Monitor
Ref Mtd ID	EQPM-1013-209
Monitor Objective	Population Exposure
Dominant Source	Area
Measurement Scale	Neighborhood
Land Use Type	Residential
Location Setting	Suburban

The Dyersburg site is in Dyer County, Tennessee, and currently supports ambient air monitoring for PM<sub>2.5</sub>. This site is located northwest of Jackson and north-northeast of Memphis, Tennessee. This site is downwind from the core Memphis MSA. Monitoring for PM<sub>2.5</sub> began at the Dyersburg site on August 22, 1998, as a part of the original PM<sub>2.5</sub> state network. Because of the importance of this site in assessing PM<sub>2.5</sub> levels outside the Memphis area, it was decided to keep it operational for the next five years (2026 through 2030). This site is also used in the AQI forecasting program to help assess impacts from precursor transport into Tennessee from adjacent states.

### New Market - Jefferson County

Address	Forester Rd, New Market, TN 37820
AQSID	47-089-0002
CBSA	34100
Lat, Lon	36.105629, -83.602077
Parameter Code	44201
Parameter Name	O <sub>3</sub>
Monitor Type	SLAMS
POC	1
Int	W
Collection Frequency	Hourly
Method	087
FRM/FEM Instrument	Model T400 Ozone Analyzer
Analysis	Ultraviolet Absorption
Ref Mtd ID	EQOA-0992-087
Monitor Objective	Max Ozone Concentration
Dominant Source	Area
Measurement Scale	Neighborhood
Land Use Type	Agricultural
Location Setting	Rural

The New Market site is in Jefferson County, Tennessee and currently supports ambient air monitoring for ozone. The site is located east-northeast of Knoxville and west-southwest of Morristown, Tennessee, downwind from the core Knoxville MSA and within the Morristown MSA. Ozone monitoring began at the New Market site on March 1, 1999, and meets the requirement for having one ozone site in the Morristown MSA. This site is used with the ozone AQI forecasting program for verification and to help address transport downwind of the Knoxville MSA. Because of the importance this site serves in assessing ozone levels outside and downwind of the Knoxville area, this site was determined to remain in operation for the next five years (2026 through 2030).

### Loretto - Lawrence County

Address	60 Busby Rd, Loretto, TN 38469
AQSID	47-099-0003
CBSA	29980
Lat, Lon	35.116878, -87.419725
Parameter Code	88101
Parameter Name	PM <sub>2.5</sub> Continuous
Monitor Type	SLAMS
POC	3
Int	1
Collection Frequency	Hourly
Method	209
FRM/FEM Instrument	Met One BAM 1022
Analysis	Real Time Beta Attenuation Mass Monitor
Ref Mtd ID	EQPM-1013-209
Monitor Objective	Upwind background, population exposure
Dominant Source	Area
Measurement Scale	Regional Scale
Land Use Type	Agricultural
Location Setting	Rural

The Loretto ambient air monitoring site is in Lawrence County, Tennessee and currently supports ambient air monitoring for PM<sub>2.5</sub>. This site is located on the southern border of Tennessee, north of Alabama. The site is southwest of Nashville and southeast of Jackson, Tennessee. This site is part of the Nashville combined statistical area (CSA) and is in the Lawrenceburg micropolitan area (CBSA) in Tennessee. Loretto PM<sub>2.5</sub> ambient air monitoring began on January 14, 2019, and replaced the original ambient air PM<sub>2.5</sub> monitoring state site location at 355 Busby Rd, Loretto, TN 38469. The Loretto ambient air monitoring site is part of the PM<sub>2.5</sub> AQI forecasting program and serves as a background ambient air PM<sub>2.5</sub> monitoring site. It was determined to remain in operation for the next five years (2026 through 2030).

### Loudon - Loudon County

Address	2175 Roberts Road, Loudon, TN 37774		
AQSID	47-105-0109		
CBSA	28940		
Lat, Lon	35.721095, -84.343035		
Parameter Code	44201	88101	88101
Parameter Name	O <sub>3</sub>	PM <sub>2.5</sub> Continuous	PM <sub>2.5</sub> Continuous
Monitor Type	SLAMS	SLAMS	SLAMS
POC	1	3 (Primary)	4 (Collocated)
Int	W	1	1
Year	2014	2017	2018
Collection Frequency	Hourly	Hourly	Hourly
Method	087	209	209
FRM/FEM Instrument	Model T400 Ozone Analyzer	Met One BAM 1022	Met One BAM 1022
Analysis	Ultraviolet Absorption	Real Time Beta Attenuation Mass Monitor	Real Time Beta Attenuation Mass Monitor
Ref Mtd ID	EQOA-0992-087	EQPM-1013-209	EQPM-1013-209
Monitor Objective	Population Exposure	Population Exposure	Population Exposure
Dominant Source	Area		
Measurement Scale	Neighborhood		
Land Use Type	Residential		
Location Setting	Suburban		

The Loudon site is located at 2175 Roberts Road, in Loudon County, TN 37774. The Loudon site supports ambient air monitoring for PM<sub>2.5</sub> and O<sub>3</sub>. It is located southwest of Knoxville and northeast of Chattanooga. This site is upwind of the Knoxville MSA and downwind from the Chattanooga MSA. Monitoring for PM<sub>2.5</sub> began at the Loudon site on August 1, 2003, as a part of a Loudon air quality study and complaint investigation. Ozone monitoring began at the Loudon site in March of 2004. The Loudon site is serving as one of two collocated PM<sub>2.5</sub> ambient air monitoring sites. Monitoring at this site is used by the AQI forecasting program for verification for the Knoxville MSA and was determined to remain in operation for the next five years (2026 through 2030).

### Athens - McMinn County

Address	Saint Mark AME Zion Church: 707 North Jackson St, Athens, TN 37303
AQSID	47-107-1002
CBSA	11940
Lat, Lon	35.450115, -84.596195
Parameter Code	88101
Parameter Name	PM <sub>2.5</sub> Continuous
Monitor Type	SPM
POC	3
Int	1
Collection Frequency	Hourly
Method	209
FRM/FEM Instrument	Met One BAM 1022
Analysis	Real Time Beta Attenuation Mass Monitor
Ref Mtd ID	EQPM-1013-209
Monitor Objective	Population Exposure
Dominant Source	Area
Measurement Scale	Neighborhood
Land Use Type	Commercial
Location Setting	Urban and Center City

The Athens site is in McMinn County, Tennessee and currently supports ambient air monitoring for PM<sub>2.5</sub>. This site is located northeast of Chattanooga and southwest of Knoxville, Tennessee downwind from the Chattanooga MSA, located in the Athens micropolitan area. PM<sub>2.5</sub> monitoring began at the Athens site on February 3, 2000, as a part of the original PM<sub>2.5</sub> state network. The FEM continuous PM<sub>2.5</sub> sampler replaced the FRM sampler on July 1, 2017 and is part of the PM<sub>2.5</sub> AQI forecasting program. This site serves to quantify air quality in this developing area of the state and was determined to remain in operation for five years (2026 through 2030).

### Jackson - Madison County

Address	North Park Soccer Complex, 210 Demonbreun Drive, Jackson, TN 38305
AQSID	47-113-0010
CBSA	27180
Lat, Lon	35.705319, -88.81964
Parameter Code	88101
Parameter Name	PM <sub>2.5</sub> Continuous
Monitor Type	SLAMS
POC	3
Int	1
Collection Frequency	Hourly
Method	209
FRM/FEM Instrument	Met One BAM 1022
Analysis	Real Time Beta Attenuation Mass Monitor
Ref Mtd ID	EQPM-1013-209
Monitor Objective	Population Exposure
Dominant Source	Area
Measurement Scale	Neighborhood
Land Use Type	Residential
Location Setting	Suburban

The Jackson site is in Madison County, Tennessee and currently supports ambient air monitoring for PM<sub>2.5</sub>. This site is located northeast of Memphis, southeast of Dyersburg and is part of the Jackson MSA in Tennessee. Monitoring for PM<sub>2.5</sub> began at the new Jackson site on March 26, 2019, and replaces the original Jackson ambient air PM<sub>2.5</sub> monitoring state site location at 1371-A North Parkway, Jackson, TN 38301. The Jackson MSA has a single FEM continuous PM<sub>2.5</sub> sampler and is a supplemental SLAMS PM<sub>2.5</sub> site. This site was determined to remain in operation for the next five years (2026 through 2030) primarily because it provides valuable upwind PM<sub>2.5</sub> data for the Nashville AQI forecast.

### Columbia - Maury County

Address	1600 Nashville Hwy, Columbia, TN
AQSID	47-119-2007
CBSA	34980
Lat, Lon	35.65188, -87.0096
Parameter Code	88101
Parameter Name	PM <sub>2.5</sub> Continuous
Monitor Type	SPM
POC	3
Int	1
Collection Frequency	Hourly
Method	209
FRM/FEM Instrument	Met One BAM 1022
Analysis	Real Time Beta Attenuation Mass Monitor
Ref Mtd ID	EQPM-1013-209
Monitor Objective	Population Exposure
Dominant Source	Area
Measurement Scale	Neighborhood
Land Use Type	Commercial
Location Setting	Urban and Center City

The Columbia site is in Maury County, Tennessee and currently supports ambient air monitoring for PM<sub>2.5</sub>. This site is located south-southwest of Nashville and northwest of Lewisburg, Tennessee. This site is located upwind, within the Nashville MSA. PM<sub>2.5</sub> monitoring began at the Columbia site on December 25, 1998, as a part of the original PM<sub>2.5</sub> state network. This site assists with the PM<sub>2.5</sub> AQI forecasting program. The FEM continuous PM<sub>2.5</sub> sampler replaced the FRM sampler on July 1, 2017. This site was determined to remain in operation for the next five years (2026 through 2030) primarily because it is the only PM<sub>2.5</sub> site in this region.

### Clarksville - Montgomery County

Address	1200 West Creek Coyote Trail, Clarksville, TN
AQSID	47-125-2001
CBSA	17300
Lat, Lon	36.611411, -87.384666
Parameter Code	88101
Parameter Name	PM <sub>2.5</sub> Continuous
Monitor Type	SLAMS
POC	3
Int	1
Collection Frequency	Hourly
Method	209
FRM/FEM Instrument	Met One BAM 1022
Analysis	Real Time Beta Attenuation Mass Monitor
Ref Mtd ID	EQPM-1013-209
Monitor Objective	Population Exposure
Dominant Source	Area
Measurement Scale	Neighborhood
Land Use Type	Residential
Location Setting	Suburban

The Clarksville site is in Montgomery County, Tennessee and currently supports ambient air monitoring for PM<sub>2.5</sub>. This site is located within the Clarksville city limits northwest of Nashville, Tennessee, and is located within the Clarksville, TN-KY MSA. Monitoring for PM<sub>2.5</sub> at 1200 West Creek Coyote Trail, Clarksville, TN began on April 3, 2019. It replaces the original Clarksville ambient air PM<sub>2.5</sub> monitoring site location at 1514 Golf Club Ln, Clarksville, TN 37043. This site assists with the PM<sub>2.5</sub> AQI forecasting program. The Clarksville MSA has a single FEM continuous PM<sub>2.5</sub> sampler that is a supplemental SLAMS PM<sub>2.5</sub> site for the MSA. The new site will remain in operation for the next five years (2026 through 2030) primarily because it is the only continuous PM<sub>2.5</sub> site in the MSA.

### Cookeville Cane Creek - Putnam County

Address	1500 W Jackson St, Cookeville, TN 38501
AQSID	47-141-0006
CBSA	18260
Lat, Lon	36.16304, -85.52908
Parameter Code	88101
Parameter Name	PM <sub>2.5</sub> Continuous
Monitor Type	SPM
POC	3
Int	1
Collection Frequency	Hourly
Method	209
FRM/FEM Instrument	Met One BAM 1022
Analysis	Real Time Beta Attenuation Mass Monitor
Ref Mtd ID	EQPM-1013-209
Monitor Objective	Population Exposure
Dominant Source	Area
Measurement Scale	Neighborhood
Land Use Type	Residential
Location Setting	Suburban

The Cookeville Cane Creek site is in Putnam County, Tennessee, and supports ambient air monitoring for PM<sub>2.5</sub>. It is east of Nashville, on the Highland Rim, just west of the Cumberland Plateau. It is not in or near an MSA but is within the state's largest micropolitan statistical area. PM<sub>2.5</sub> monitoring began at Cookeville Cane Creek on April 1, 2026, following monitoring site relocation. Additional information regarding the relocation is provided in the [“Changes to Tennessee’s Ambient Monitoring Network”](#) section. This site will remain in operation because it is the only PM<sub>2.5</sub> site in this region. It was decided to keep this site operational for the next five years (2026 through 2030).

### Cookeville (Inactive) – Putnam County

Address	630 East 20th Street, Cookeville TN 38501
AQSID	47-141-0005
CBSA	18260
Lat, Lon	36.185702, -85.492107
Parameter Code	88101
Parameter Name	PM <sub>2.5</sub> Continuous
Monitor Type	SPM
POC	3
Int	1
Collection Frequency	Hourly
Method	209
FRM/FEM Instrument	Met One BAM 1022
Analysis	Real Time Beta Attenuation Mass Monitor
Ref Mtd ID	EQPM-1013-209
Monitor Objective	Population Exposure
Dominant Source	Area
Measurement Scale	Neighborhood
Land Use Type	Residential
Location Setting	Suburban

The Cookeville monitoring site was located in Putnam County, Tennessee, and supported ambient PM<sub>2.5</sub> monitoring. The site was situated east of Nashville on the Highland Rim, just west of the Cumberland Plateau. Although the site was not located within or near a Metropolitan Statistical Area (MSA), it was located within the largest micropolitan statistical area in the state. PM<sub>2.5</sub> monitoring began at the Cookeville site on August 15, 2006, and ended on March 31, 2026, following relocation to the new Cookeville Cane Creek PM<sub>2.5</sub> monitoring site.

### Harriman - Roane County

Address	Harriman High: 1002 N. Roane St., Harriman, TN 37748
AQSID	47-145-0004
CBSA	28940
Lat, Lon	35.939078, -84.542802
Parameter Code	88101
Parameter Name	PM <sub>2.5</sub> Continuous
Monitor Type	SPM
POC	3
Int	1
Collection Frequency	Hourly
Method	209
FRM/FEM Instrument	Met One BAM 1022
Analysis	Real Time Beta Attenuation Mass Monitor
Ref Mtd ID	EQPM-1013-209
Monitor Objective	Population Exposure
Dominant Source	Area
Measurement Scale	Urban
Land Use Type	Industrial
Location Setting	Suburban

The Harriman site is in Roane County, Tennessee and currently supports air monitoring for PM<sub>2.5</sub>. This site is located west of Knoxville and west-southwest of Oak Ridge, Tennessee. It is upwind from the Knoxville MSA. PM<sub>2.5</sub> monitoring began at the Harriman site on January 1, 1998, as a part of the original PM<sub>2.5</sub> state network. This site is also part of the PM<sub>2.5</sub> AQI forecasting program. This site was determined to remain in operation for the next five years (2026 through 2030). The Knoxville MSA has four operating PM<sub>2.5</sub> SLAMS sites and is required to have one PM<sub>2.5</sub> monitoring site.

**Kingsport (PM<sub>2.5</sub>) – Sullivan County**

Address	1649 D Street Kingsport TN 37664
AQSID	47-163-1007
CBSA	28700
Lat, Lon	36.538761, -82.521599
Parameter Code	88101
Parameter Name	PM <sub>2.5</sub> Continuous
Monitor Type	SLAMS
POC	3
Int	1
Collection Frequency	Hourly
Method	209
FRM/FEM Instrument	Met One BAM 1022
Analysis	Real Time Beta Attenuation Mass Monitor
Ref Mtd ID	EQPM-1013-209
Monitor Objective	Population Exposure
Dominant Source	Area
Measurement Scale	Urban
Land Use Type	Residential
Location Setting	Suburban

The Kingsport site is in Sullivan County, Tennessee and currently supports ambient air monitoring for PM<sub>2.5</sub>. This site is in the far northeast corner of the state and is south of the state of Virginia. This site is upwind of Bristol, TN-VA and located within the Kingsport-Bristol-Bristol, Tennessee-Virginia MSA, within Kingsport city limits. PM<sub>2.5</sub> monitoring began at the Kingsport site on October 1, 1998, as a part of the original PM<sub>2.5</sub> state network. It is also part of the PM<sub>2.5</sub> AQI forecasting program. The Kingsport MSA has a single FEM continuous PM<sub>2.5</sub> sampler and is a supplemental SLAMS PM<sub>2.5</sub> site for the MSA. This site was determined to remain in operation for the next five years (2026 through 2030) primarily because it is the only PM<sub>2.5</sub> site in this region.

### Blountville - Sullivan County

Address	Indian Springs School Shawnee Drive Blountville, TN 37664
AQSID	47-163-2002
CBSA	28700
Lat, Lon	36.541365, -82.424555
Parameter Code	44201
Parameter Name	O <sub>3</sub>
Monitor Type	SLAMS
POC	1
Int	W
Collection Frequency	Hourly
Method	087
FRM/FEM Instrument	Model T400 Ozone Analyzer
Analysis	Ultraviolet Absorption
Ref Mtd ID	EQOA-0992-087
Monitor Objective	Population Exposure
Dominant Source	Area
Measurement Scale	Neighborhood
Land Use Type	Residential
Location Setting	Rural

The Blountville site is in Sullivan County, Tennessee and currently supports ambient air monitoring for ozone. It is located east of Kingsport, near Blountville, TN. This site is downwind from the city of Kingsport. Monitoring for ozone at the Blountville site began January 1, 1980, and is used with the ozone AQI forecasting program for verification and to help address the ozone impacts in the Kingsport-Bristol-Bristol Tennessee-Virginia and Johnson City MSAs. This site was determined to remain in operation for the next five years (2026 through 2030) primarily because of its location within the Kingsport-Bristol-Bristol MSA.

### Kingsport O<sub>3</sub> - Sullivan County

Address	3301 Bloomingdale Rd. Kingsport TN 37660
AQSID	47-163-2003
County Name	Sullivan
CBSA	28700
Lat, Lon	36.58211, -82.485742
Parameter Code	44201
Parameter Name	O <sub>3</sub>
Monitor Type	SLAMS
POC	1
Int	W
Collection Frequency	Hourly
Method	087
FRM/FEM Instrument	Model T400 Ozone Analyzer
Analysis	Ultraviolet Absorption
Ref Mtd ID	EQOA-0992-087
Monitor Objective	Population Exposure
Dominant Source	Area
Measurement Scale	Neighborhood
Land Use Type	Residential
Location Setting	Suburban

The Kingsport site is in Sullivan County, Tennessee and currently supports ambient air monitoring for ozone. It is in the far northeast corner of the state and is south of the State of Virginia near the Tennessee-Virginia line. This site is upwind of Gate City, VA and downwind of the Kingsport city limits. Kingsport is also a part of the Kingsport-Bristol-Bristol Tennessee-Virginia MSA and provides data for the AQI forecasting program. Ozone monitoring began at the Kingsport site on April 1, 1995. This site was determined to remain in operation for the next five years (2026 through 2030) primarily because of its location within the Kingsport-Bristol-Bristol MSA.

### Exide - Sullivan County

Address	364 Exide Drive, Bristol TN 37620	
AQSID	47-163-3004	
County Name	Sullivan	
CBSA	28700	
Lat, Lon	36.52443, -82.273296	
Parameter Code	14129	14129
Parameter Name	Pb	Pb
Monitor Type	SLAMS	SLAMS
POC	1 (Primary)	2 (Collocated)
Int	7	7
Collection Frequency	1 In 6	1 In 6
Method	193	193
FRM/FEM Instrument	Pb-TSP/ICP Spectra (ICP-MS)	Pb-TSP/ICP Spectra (ICP-MS)
Analysis	Inductively Coupled Plasma-Mass Spectrometry Acid Filter Extract with Hot Nitric Acid	Inductively Coupled Plasma-Mass Spectrometry Acid Filter Extract with Hot Nitric Acid
Ref Mtd ID	EQL-0512-201	EQL-0512-201
Monitor Objective	Source Oriented	
Dominant Source	Point	
Measurement Scale	Urban Scale	
Land Use Type	Industrial	
Location Setting	Urban and Center City	

The Exide site is in Sullivan County, Tennessee and currently supports ambient air monitoring for lead. It is located east of Kingsport and northeast of Blountville on the Tennessee-Virginia state line. This site is downwind from Johnson City and Blountville and is in the Kingsport Bristol MSA. Lead monitoring began at the Exide site on January 1, 2010, to verify lead NAAQS compliance at a lead battery plant. This area is now classified as attainment for the 2008 lead NAAQS. The former lead source shut down in 2013, surrendered its air permits on November 3, 2014, and has removed all lead processing emission sources. Following a bankruptcy filing in May 2020, the Bristol Exide property was transferred to an Environmental Response Trust (ERT) in October 2020. The ERT then transferred the title to Phoenix Investments, LLC in March 2021 following a Limited Site Investigation. The Limited Site Investigation conducted by Key Engineering Group and Strata Group, of Lexington, Kentucky included soil sampling conducted outside the former lead battery plant by taking a total 18 soil samples from depths between 0 to 15.5 feet below ground. The soil analysis concluded that the historical Exide operations did not result in a release to the soils outside the building. In April 2021, a cleanup of the interior was initiated and is ongoing. No other existing lead emitting sources are in the area around the monitor. The site is expected to remain in operation in 2026.

**Ross N Robinson – Sullivan County**

Address	Wilburn Drive, Kingsport, TN 37664
AQSID	47-163-6001
County Name	Sullivan
CBSA	28700
Lat, Lon	36.532616, -82.516306
Parameter Code	42401
Parameter Name	SO <sub>2</sub>
Monitor Type	SLAMS
POC	1
Int	1
Collection Frequency	Hourly
Method	100
FRM/FEM Instrument	Teledyne T100 SO <sub>2</sub> Analyzer
Analysis	Ultraviolet Fluorescence
Ref Mtd ID	EQSA-0495-100
Monitor Objective	Source Oriented
Dominant Source	Point
Measurement Scale	Urban Scale
Land Use Type	Residential
Location Setting	Suburban

The Ross N Robinson site is in Sullivan County, Tennessee and currently supports ambient air monitoring for SO<sub>2</sub>. The Ross N Robinson monitor is located within the 3-km SO<sub>2</sub> nonattainment area surrounding the Tennessee Eastman Chemical Plant and became operational on July 21, 2016. This monitoring site operates as part of the SO<sub>2</sub> monitoring network for the Kingsport, Tennessee CBSA and is one of 4 monitoring sites designed for the characterization of maximum expected SO<sub>2</sub> concentrations within the nonattainment area. Although the Population Weighted Emissions Index (PWEI) calculations do not independently indicate a monitoring requirement for this CBSA, the monitor is operated at the discretion of the EPA Regional Administrator consistent with applicable SO<sub>2</sub> monitoring requirements.

### Skyland Dr. - Sullivan County

Address	Skyland Drive at Bagwell St., Kingsport, TN
AQSID	47-163-6002
County Name	Sullivan
CBSA	28700
Lat, Lon	36.521066, -82.502454
Parameter Code	42401
Parameter Name	SO <sub>2</sub>
Monitor Type	SLAMS
POC	1
Int	1
Collection Frequency	Hourly
Method	100
FRM/FEM Instrument	Teledyne T100 SO <sub>2</sub> Analyzer
Analysis	Ultraviolet Fluorescence
Ref Mtd ID	EQSA-0495-100
Monitor Objective	Source Oriented
Dominant Source	Point
Measurement Scale	Urban Scale
Land Use Type	Residential
Location Setting	Suburban

The Skyland Drive ambient air monitoring site is in Sullivan County, Tennessee and currently supports ambient air monitoring for SO<sub>2</sub>. The site is located within the 3-km SO<sub>2</sub> nonattainment area surrounding the Tennessee Eastman Chemical Plant and became operational on September 1, 2016. The site was established to characterize the maximum expected concentrations in the nonattainment area. This site is one of 4 sites in the Kingsport, TN CBSA designed to characterize the maximum expected concentrations in the nonattainment area.

### Andrew Johnson Elementary School - Sullivan County

Address	1001 Ormond Drive, Kingsport, TN
AQSID	47-163-6003
County Name	Sullivan
CBSA	28700
Lat, Lon	Lat: 36.526359; Long: -82.528677
Parameter Code	42401
Parameter Name	SO <sub>2</sub>
Monitor Type	SLAMS
POC	1
Int	1
Collection Frequency	Hourly
Method	100
FRM/FEM Instrument	Teledyne T100 SO <sub>2</sub> Analyzer
Analysis	Ultraviolet Fluorescence
Ref Mtd ID	EQSA-0495-100
Monitor Objective	Source Oriented
Dominant Source	Point
Measurement Scale	Urban Scale
Land Use Type	Residential
Location Setting	Suburban

The Andrew Johnson Elementary School ambient air monitoring site is in Sullivan County, Tennessee and currently supports ambient air monitoring for SO<sub>2</sub>. The site is located within the 3-km SO<sub>2</sub> nonattainment area surrounding the Tennessee Eastman Chemical Plant. This site began monitoring for SO<sub>2</sub> on January 1, 2019. This site is one of four sites in the Kingsport, TN CBSA designed to characterize the maximum expected concentrations in the nonattainment area.

### Happy Hill - Sullivan County

Address	2105 Happy Hill Road, Kingsport, TN
AQSID	47-163-6004
County Name	Sullivan
CBSA	28700
Lat, Lon	Lat: 36.513026; Long: -82.550498
Parameter Code	42401
Parameter Name	SO <sub>2</sub>
Monitor Type	SLAMS
POC	1
Int	1
Collection Frequency	Hourly
Method	100
FRM/FEM Instrument	API Model 100 E SO <sub>2</sub> Analyzer
Analysis	Ultraviolet Fluorescence
Ref Mtd ID	EQSA-0495-100
Monitor Objective	Source Oriented
Dominant Source	Point
Measurement Scale	Urban Scale
Land Use Type	Residential
Location Setting	Suburban

The Happy Hill Road ambient air monitoring site is in Sullivan County, Tennessee and currently supports ambient air monitoring for SO<sub>2</sub>. The site is located within the 3-km SO<sub>2</sub> nonattainment area surrounding the Tennessee Eastman Chemical Plant. The Happy Hill Road site was established and operational on October 10, 2018, but officially began collecting data for NAAQS comparison on January 1, 2019. This site is one of four sites in the Kingsport, TN CBSA designed to characterize the maximum expected concentrations in the nonattainment area.

### Hendersonville - Sumner County

Address	Rockland Recreational Area, Old Hickory Dam, Hendersonville, TN		
AQSID	47-165-0007		
CBSA	34980		
Lat	36.29756, -86.653137		
Parameter Code	44201	88101	88101
Parameter Name	O <sub>3</sub>	PM <sub>2.5</sub>	PM <sub>2.5</sub> Continuous
Monitor Type	SLAMS	SLAMS	SLAMS
POC	1	1 (Collocated)	3 (Primary)
Int	W	7	1
Collection Frequency	Hourly	1 in 3	Hourly
Method	087	118	209
FRM/FEM Instrument	Model T400 Ozone Analyzer	Thermo Scientific 2025i	Met One BAM 1022
Analysis	Ultraviolet Absorption	Gravimetric	Real Time Beta Attenuation Mass Monitor
Ref Mtd ID	EQOA-0992-087	RFPS-1006-145	EQPM-1013-209
Monitor Objective	Highest Conc	Population Exposure	
Dominant Source	Area	Area	
Measurement Scale	Urban	Urban	
Land Use Type	Industrial	Industrial	
Location Setting	Rural	Rural	

The Hendersonville site is in Sumner County, Tennessee and currently supports ambient air monitoring for ozone and PM<sub>2.5</sub>. This site is located northeast of Nashville and west-southwest of Gallatin, Tennessee. This site is downwind from Nashville and is considered part of the Nashville MSA. Ozone monitoring began on January 1, 1973, and is conducted for the ozone AQI forecasting program for verification and to help address NAAQS compliance in the Nashville MSA. Monitoring for PM<sub>2.5</sub> at the Hendersonville site began on October 1, 1998, as a part of the original PM<sub>2.5</sub> state network. This site is also part of the PM fine AQI forecasting program. An FEM continuous PM<sub>2.5</sub> sampler replaced the collocated FRM sampler on January 1, 2018. This site was determined to remain in operation for the next five years (2026 through 2030) primarily because it is the ozone DV site for the Nashville MSA and is downwind from the Nashville fine particulate precursor sources.

### Fairview -Williamson County

Address	Fairview Middle School: 7200 Cumberland Dr, Fairview, TN
AQSID	47-187-0106
CBSA	34980
Lat, Lon	35.949765, -87.138246
Parameter Code	44201
Parameter Name	O <sub>3</sub>
Monitor Type	SLAMS
POC	1
Int	W
Collection Frequency	Hourly
Method	087
FRM/FEM Instrument	Model T400 Ozone Analyzer
Analysis	Ultraviolet Absorption
Ref Mtd ID	EQOA-0992-087
Monitor Objective	Population Exposure
Dominant Source	Area
Measurement Scale	Urban Scale
Land Use Type	Agricultural
Location Setting	Rural

The Fairview site is in Williamson County, Tennessee and currently supports ambient air monitoring for ozone. It is located southwest of Nashville and northwest of Franklin, Tennessee. This site is upwind from the core Nashville MSA. Ozone monitoring at the Fairview site began on October 30, 2001, is conducted for the ozone AQI forecasting program and to help address upwind ozone concentrations entering the Nashville MSA. Due to this site's importance in assessing the area ozone levels outside and upwind of the Nashville area, it was determined to remain in operation for the next five years (2026 through 2030).

### Cedars of Lebanon - Wilson County

Address	Cedar Forest Rd., Lebanon, TN
AQSID	47-189-0103
CBSA	34980
Lat, Lon	36.060895, -86.286291
Parameter Code	44201
Parameter Name	O <sub>3</sub>
Monitor Type	SLAMS
POC	1
Int	W
Collection Frequency	Hourly
Method	087
FRM/FEM Instrument	Model T400 Ozone Analyzer
Analysis	Ultraviolet Absorption
Ref Mtd ID	EQOA-0992-087
Monitor Objective	Highest Concentration
Dominant Source	Area
Measurement Scale	Urban Scale
Land Use Type	Forest
Location Setting	Rural

The Cedars site is in Wilson County, Tennessee and currently supports ambient air monitoring for ozone. This site is located east of Nashville and north of Murfreesboro, Tennessee. This site is downwind from Murfreesboro, Tennessee and is located within the Nashville MSA. The Cedars site began monitoring for ozone on May 1, 1998, and supports the ozone AQI forecasting program for verification and to help address downwind ozone levels in the Nashville MSA. Because of the importance that this site serves in assessing the area ozone levels outside and downwind of the Nashville area, this site was determined to remain in operation for the next five years (2026 through 2030).

### **National Park Service Monitors**

The NPS air monitoring sites are included as a courtesy to the readers of the TDEC-DAPC 2025 AMNP. These sites are included because they are collecting and reporting data previously used for attainment decisions in Tennessee and that can be used for future determinations. The NPS sites are not a part of the TDEC-DAPC air monitoring networks and TDEC-DAPC does not report their data to the EPA AQS data systems; however, these data may continue to be used to support air quality forecasting by TDEC in the area.

**Cades Cove - Blount County (GSM NP)**

Address	Great Smoky Mountains NP - Cades Cove
AQSID	47-009-0102
CBSA	28940
Lat, Lon	35.603056, -83.783611
Parameter Code	44201
Parameter Name	O <sub>3</sub>
Monitor Type	NON-EPA FEDERAL
POC	1
Int	W
Collection Frequency	Hourly
Method	053
FRM/FEM Instrument	Thermo Electron 49
Analysis	Ultraviolet
Ref Mtd ID	EQOA-0880-047
Monitor Objective	Highest Concentration
Dominant Source	0
Measurement Scale	Regional Scale
Land Use Type	Forest
Location Setting	Rural

The Cades Cove site is in Blount County, Tennessee and currently supports ambient air monitoring for ozone and meteorological parameters. The Cades Cove site was initially established on May 1, 1994 and is located within the Tennessee portion of the Great Smoky Mountains National Park. This site is within and southeast of the Knoxville MSA. It is used with the ozone AQI forecasting program for verification and to help address ozone levels found in the GSMNP. It is the responsibility of the NPS to operate, maintain, and conduct all QA/QC activities at this site in accordance with 40 CFR Part 58. The National Park Service is responsible for verifying, validating, and certifying the ozone data collected.

**Look Rock – Blount County (GSM NP)**

Address	Great Smoky Mountains NP Look Rock	
AQSID	47-009-0101	
CBSA	28940	
Lat, Lon	35.6334799, -83.941605999999993	
Parameter Code	44201	88501
Parameter Name	O <sub>3</sub>	PM <sub>2.5</sub> Continuous
Monitor Type	NON-EPA FEDERAL	NON-EPA FEDERAL
POC	1	1
Int	W	1
Collection Frequency	Hourly	Hourly
Method	053	716
FRM/FEM Instrument	Thermo Electron 49	None
Analysis	Ultraviolet	TEOM Gravimetric 50 deg C
Ref Mtd ID	EQOA-0880-047	None
Monitor Objective	General Background	
Dominant Source	0	
Measurement Scale	0	
Land Use Type	Forest	
Location Setting	Rural	

The Look Rock site is in Blount County, Tennessee and currently supports ambient air monitoring for ozone and other pollutants. The Look Rock site was initially established in 1980 and is located within the Tennessee portion of the Great Smoky Mountains National Park. This site is within and southeast of the Knoxville MSA. Ozone monitoring began on July 23, 1998, and PM<sub>2.5</sub> monitoring began on May 1, 2002. This site is one of two NCore sites in the state and serves as the park’s Interagency Monitoring of Protected Visual Environments (IMPROVE). The Look Rock site is used with the PM Fine AQI forecasting program for verification and to help address fine particulate levels found in the GSMNP area. This site is operated and maintained by the NPS. The NPS is responsible for verifying, validating, and certifying the ozone data collected.

### Cove Mountain – Sevier Country (GSM NP)

Address	Great Smoky Mountain NP- Cove Mountain
AQSID	47-155-0101
CBSA	42940
Lat, Lon	35.6966669999999, -83.609722
Parameter Code	44201
Parameter Name	O <sub>3</sub>
Monitor Type	NON-EPA FEDERAL
POC	1
Int	W
Collection Frequency	Hourly
Method	47
FRM/FEM Instrument	Thermo Electron 49
Analysis	Ultraviolet
Ref Mtd ID	EQOA-0880-047
Monitor Objective	General/Background
Dominant Source	Area
Measurement Scale	Neighborhood
Land Use Type	Forest
Location Setting	Rural

The Cove Mt. site is in Sevier County, Tennessee and currently supports ambient air monitoring for ozone and meteorological parameters. It is located within the Tennessee portion of the Great Smoky Mountains National Park. This site is outside and southeast of the Knoxville MSA. Ozone monitoring began at Cove Mountain site on July 1, 1988. This site is used with the ozone AQI forecasting program for verification and to help address ozone levels found in the GSMNP area. This site is operated and maintained by the NPS. The NPS is responsible for verifying, validating, and certifying the ozone data collected.

**Clingman's Dome - Sevier County (GSM NP)**

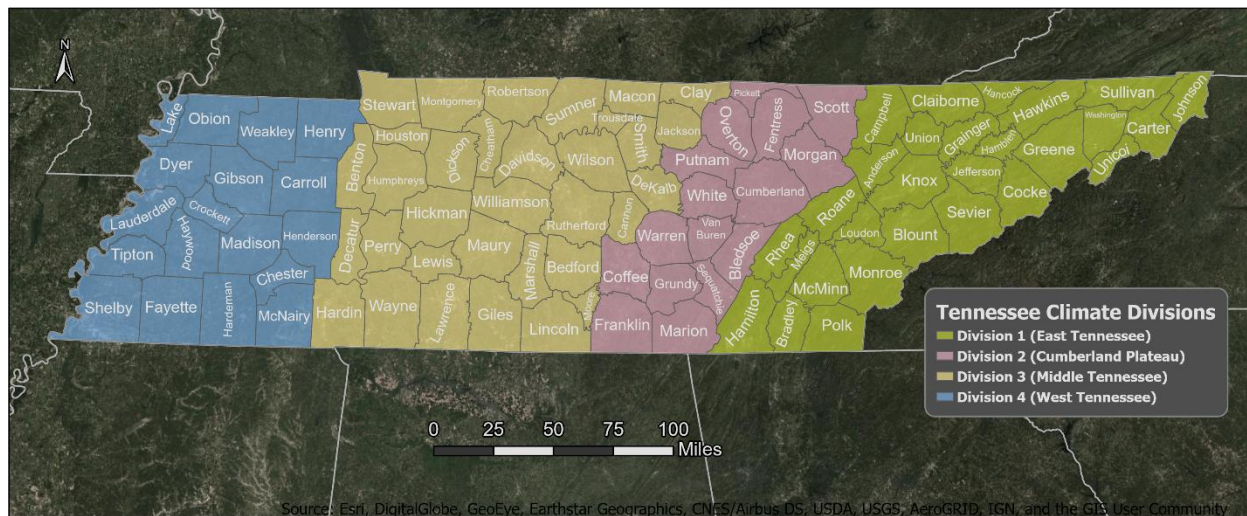
Address	Great Smoky Mountain Np Clingman's Dome
AQSID	47-155-0102
CBSA	42940
Lat, Lon	35.562778, -83.4981
Parameter Code	44201
Parameter Name	O <sub>3</sub>
Monitor Type	NON-EPA FEDERAL
POC	1
Int	W
Year	2014
Collection Frequency	Hourly
Method	47
FRM/FEM Instrument	Thermo Electron 49
Analysis	Ultraviolet
Ref Mtd ID	EQOA-0880-47
Monitor Objective	Highest Concentration
Dominant Source	Area
Measurement Scale	Regional Scale
Land Use Type	Forest
Location Setting	Rural

The Clingman's Dome site is in Sevier County, Tennessee and currently supports ambient air monitoring for ozone and meteorological parameters. This site is located within the Tennessee portion of the Great Smoky Mountains National Park. This site is outside and southeast of the Knoxville MSA. The Clingman's Dome site began ozone monitoring on April 1, 1993. This site is used with the ozone AQI forecasting program and to help address ozone levels found in the GSMNP area. This site is located at the highest point inside of Tennessee and is on the border of Tennessee and North Carolina. The elevation of the site poses challenges in maintenance and access as the site is often impacted in the late fall and through-out the winter and spring by excessive snow fall and icing events that prevent access to the site. The ozone data collection season at this site is truncated due to the site access issues in March and April and in some years in October due to early snowfall events. This site is operated and maintained by the NPS. The NPS is responsible for verifying, validating, and certifying the ozone data collected.

## Tennessee Geographic Regions, Descriptions and Climate

### Tennessee Climate

The following discussion of Tennessee's climate is provided by the Tennessee Climate Office at East Tennessee State University.

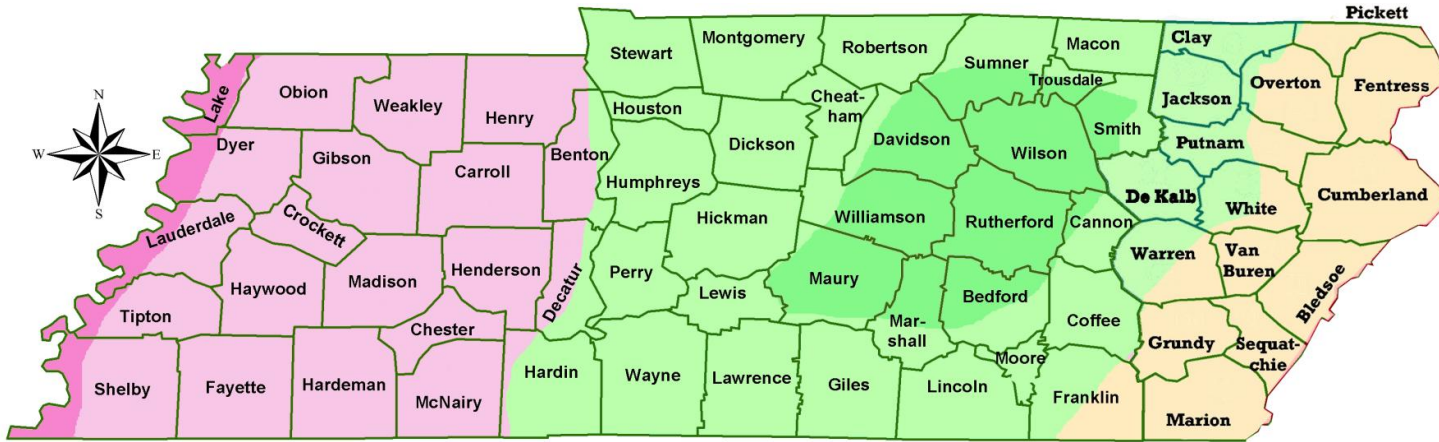


Tennessee's climate is shaped by its varied topography, stretching from the lowlands of the Mississippi Valley to the Cumberland Plateau and the high peaks of the southern Appalachians. Most of the state has a humid subtropical climate with warm, humid summers and mild winters, but elevation strongly affects temperature, precipitation, snowfall, and growing seasons. This creates large regional differences across Tennessee, including wetter mountain slopes, rain-shadow effects in parts of East Tennessee, and longer growing seasons in lower-elevation areas.

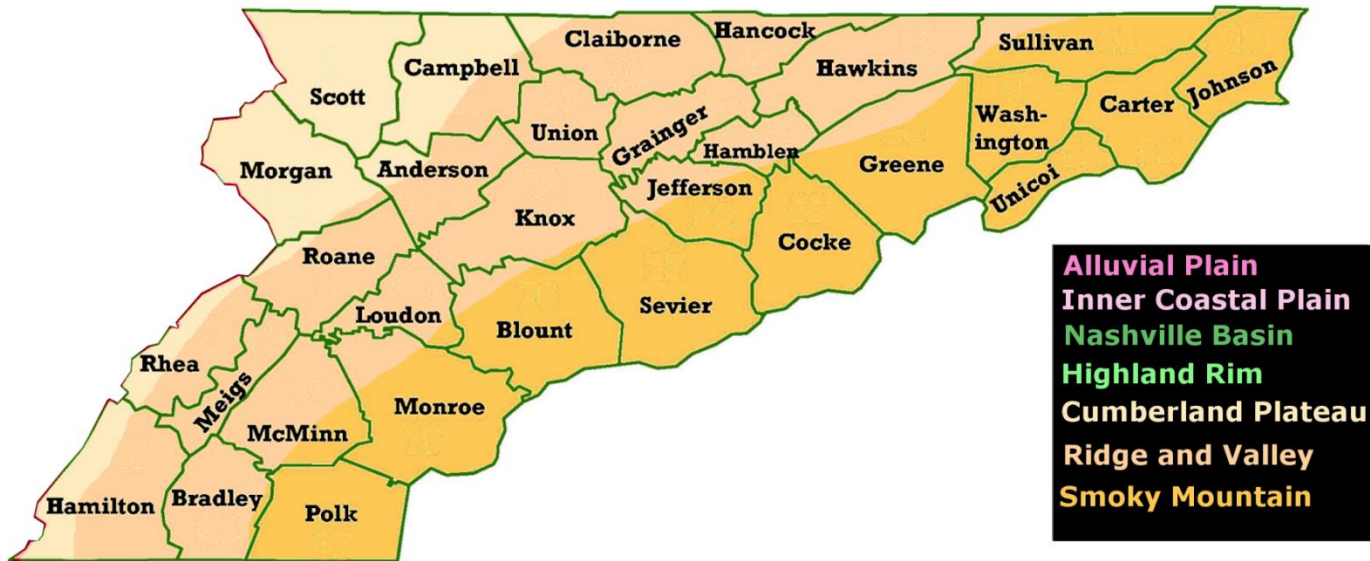
Additional climate information for Tennessee is available from the [Tennessee Climate Office](#) and the [National Centers for Environmental Information](#).

## Map of Tennessee Geographic Regions

Central Time Zone Regions (CST UTC-6:00, CDT UTC-5:00)

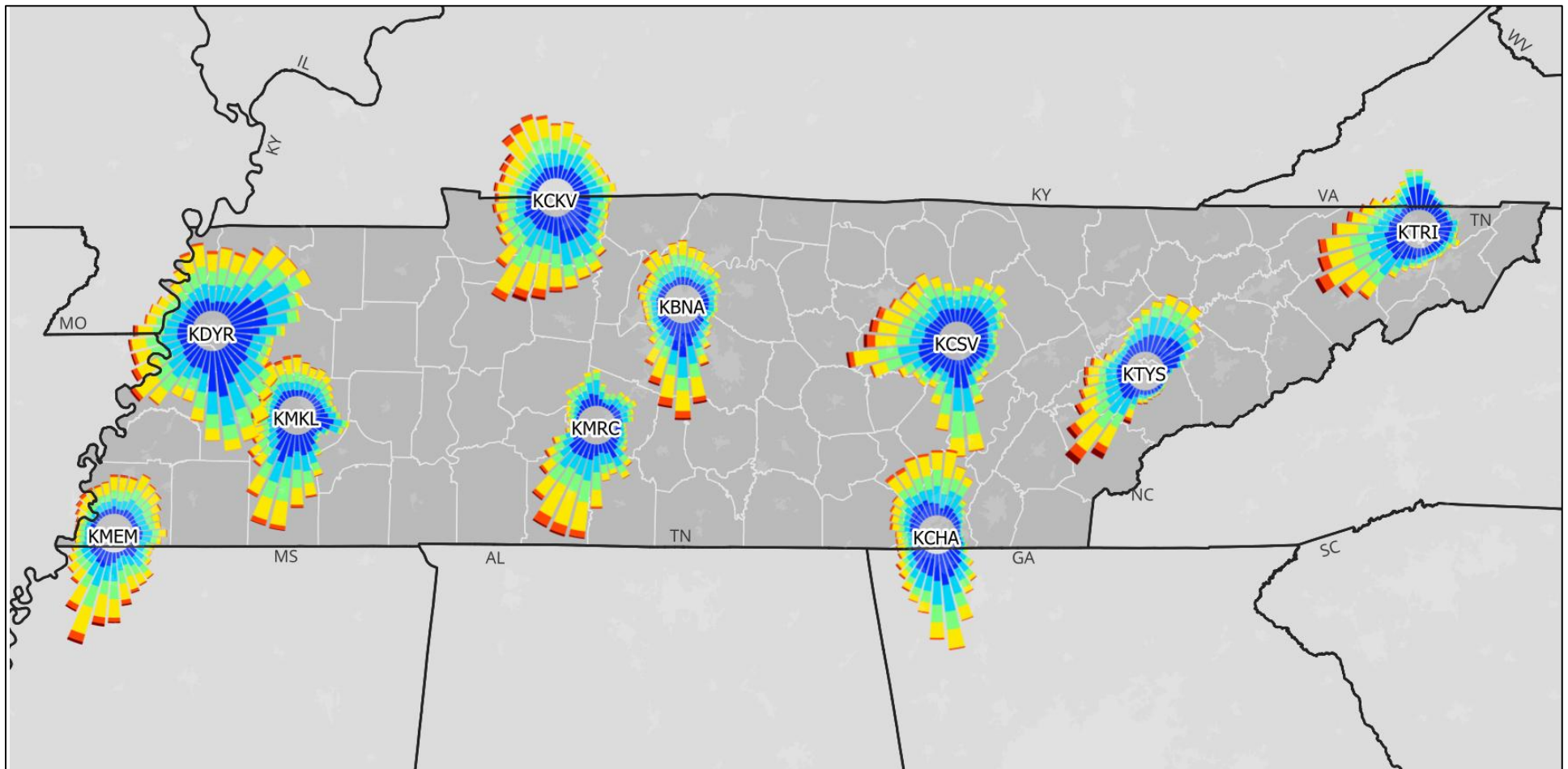


Eastern Time Zone Regions (CST UTC-5:00, CDT UTC-4:00)



**Alluvial Plain**  
**Inner Coastal Plain**  
**Nashville Basin**  
**Highland Rim**  
**Cumberland Plateau**  
**Ridge and Valley**  
**Smoky Mountain**

### 3-Yr (2022-2025) Wind Rose Data for 10 TN Area ASOS Stations



**Table 2: Tennessee Metropolitan Statistical Areas and Population Estimates**

MSA Geographic Area	April 1, 2020 Estimates Base	Population Estimate (as of July 1)		
		2023	2024	2025
Chattanooga, TN-GA	563,291	582,536	589,864	594,530
Clarksville, TN-KY	320,520	340,083	346,603	349,001
Cleveland, TN	126,156	130,260	132,522	134,057
Jackson, TN	180,498	182,442	183,716	184,569
Johnson City, TN	207,275	213,324	214,867	216,416
Kingsport-Bristol, TN-VA	307,626	312,656	314,087	314,834
Knoxville, TN	903,474	947,525	959,488	968,137
Memphis, TN-MS-AR	1,345,431	1,342,386	1,345,629	1,341,412
Morristown, TN	119,173	124,431	127,394	128,867
Nashville-Davidson--Murfreesboro--Franklin, TN	2,014,440	2,116,786	2,162,758	2,197,416

Source Link: [Census.gov](https://www.census.gov)

**Table 3: Tennessee Micropolitan Statistical Areas and Population Estimates**

Annual Estimates of the Resident Population for Micropolitan Statistical Areas in the United States and Puerto Rico: April 1, 2020 to July 1, 2025				
Geographic Area	April 1, 2020 Estimates Base	Population Estimate (as of July 1)		
		2023	2024	2025
Cookeville, TN	141,355	148,324	150,267	152,477
Crossville, TN	61,153	64,817	65,630	66,300
Dyersburg, TN	36,799	36,495	36,484	36,320
Fayetteville, TN	35,322	36,157	36,715	36,853
Greeneville, TN	70,153	72,518	73,345	73,831
Lawrenceburg, TN	44,158	46,091	46,644	46,914
Lewisburg, TN	34,318	37,048	37,882	38,071
Martin, TN	32,908	33,167	33,216	33,261
McMinnville, TN	40,953	42,615	43,544	43,717
Newport, TN	35,997	37,359	37,736	37,889
Sevierville, TN	98,677	100,410	101,224	101,342
Shelbyville, TN	50,237	53,249	54,458	55,273
Tullahoma-Manchester, TN	64,340	67,364	68,295	69,339
Union City, TN	30,795	30,402	30,256	30,067
Winchester, TN	42,767	44,724	45,191	45,579

Source Link: [Census.gov](https://www.census.gov)

[Metropolitan and Micropolitan Statistical Areas Totals: 2020-2025 \(census.gov\)](https://www.census.gov)

**Table 4: Tennessee County Population Data Trends**

(Estimates Based on 2020 by US Census Bureau)

Annual Estimates of the Resident Population for Counties in Tennessee: April 1, 2020 to July 1, 2025				
Geographic Area	April 1, 2020 Estimates Base	Population Estimate (as of July1)		
		2023	2024	2025
Tennessee	6,912,319	7,153,029	7,251,291	7,315,076
Anderson County, Tennessee	77,170	80,369	81,574	82,066
Bedford County, Tennessee	50,237	53,249	54,458	55,273
Benton County, Tennessee	15,858	16,160	16,105	16,183
Bledsoe County, Tennessee	14,907	14,996	15,573	15,920
Blount County, Tennessee	135,290	141,407	142,272	143,820
Bradley County, Tennessee	108,620	112,196	114,114	115,465
Campbell County, Tennessee	39,280	40,228	40,325	40,290
Cannon County, Tennessee	14,508	15,038	15,157	15,296
Carroll County, Tennessee	28,432	29,007	29,203	29,200
Carter County, Tennessee	56,365	57,047	57,368	57,361
Cheatham County, Tennessee	41,023	42,223	42,616	42,778
Chester County, Tennessee	17,348	17,712	17,841	17,994
Claiborne County, Tennessee	32,041	32,667	32,940	33,229
Clay County, Tennessee	7,579	7,666	7,810	7,821
Cocke County, Tennessee	35,997	37,359	37,736	37,889

Annual Estimates of the Resident Population for Counties in Tennessee: April 1, 2020 to July 1, 2025

Geographic Area	April 1, 2020 Estimates Base	Population Estimate (as of July1)		
		2023	2024	2025
Coffee County, Tennessee	57,873	60,562	61,473	62,419
Crockett County, Tennessee	13,910	13,967	13,963	14,006
Cumberland County, Tennessee	61,153	64,817	65,630	66,300
Davidson County, Tennessee	715,887	720,989	736,623	745,904
Decatur County, Tennessee	11,434	11,685	11,738	11,820
DeKalb County, Tennessee	20,074	21,301	21,684	21,873
Dickson County, Tennessee	54,316	56,882	57,804	58,662
Dyer County, Tennessee	36,799	36,495	36,484	36,320
Fayette County, Tennessee	41,717	44,130	44,542	45,071
Fentress County, Tennessee	18,487	19,651	20,021	20,322
Franklin County, Tennessee	42,767	44,724	45,191	45,579
Gibson County, Tennessee	50,409	51,245	51,645	51,779
Giles County, Tennessee	30,345	30,879	31,016	31,433
Grainger County, Tennessee	23,532	24,713	25,098	25,739
Greene County, Tennessee	70,153	72,518	73,345	73,831
Grundy County, Tennessee	13,526	13,954	14,118	14,116
Hamblen County, Tennessee	64,507	66,582	68,177	68,843
Hamilton County, Tennessee	366,840	381,087	387,268	390,833
Hancock County, Tennessee	6,661	6,974	7,046	7,075
Hardeman County, Tennessee	25,460	25,555	25,527	25,274
Hardin County, Tennessee	26,968	27,433	27,672	27,983
Hawkins County, Tennessee	56,718	58,587	59,422	59,559

Annual Estimates of the Resident Population for Counties in Tennessee: April 1, 2020 to July 1, 2025

Geographic Area	April 1, 2020 Estimates Base	Population Estimate (as of July1)		
		2023	2024	2025
Haywood County, Tennessee	17,864	17,377	17,211	17,042
Henderson County, Tennessee	27,844	28,083	28,229	28,518
Henry County, Tennessee	32,197	32,504	32,920	32,896
Hickman County, Tennessee	24,910	25,794	25,913	26,219
Houston County, Tennessee	8,273	8,391	8,525	8,479
Humphreys County, Tennessee	18,989	19,286	19,542	19,646
Jackson County, Tennessee	11,620	12,355	12,447	12,466
Jefferson County, Tennessee	54,666	57,849	59,217	60,024
Johnson County, Tennessee	17,944	18,325	18,522	18,718
Knox County, Tennessee	478,925	501,589	507,597	511,453
Lake County, Tennessee	7,001	6,385	6,339	6,249
Lauderdale County, Tennessee	25,139	24,504	24,540	24,617
Lawrence County, Tennessee	44,158	46,091	46,644	46,914
Lewis County, Tennessee	12,586	13,126	13,354	13,487
Lincoln County, Tennessee	35,322	36,157	36,715	36,853
Loudon County, Tennessee	54,889	60,699	62,642	63,764
McMinn County, Tennessee	53,272	55,814	56,732	57,404
McNairy County, Tennessee	25,868	26,066	26,137	26,236
Macon County, Tennessee	25,212	26,868	27,292	27,663
Madison County, Tennessee	98,831	99,518	100,267	100,790
Marion County, Tennessee	28,841	29,393	29,761	29,804
Marshall County, Tennessee	34,318	37,048	37,882	38,071

Annual Estimates of the Resident Population for Counties in Tennessee: April 1, 2020 to July 1, 2025

Geographic Area	April 1, 2020 Estimates Base	Population Estimate (as of July1)		
		2023	2024	2025
Maury County, Tennessee	100,957	111,022	114,456	118,131
Meigs County, Tennessee	12,756	13,695	13,990	14,186
Monroe County, Tennessee	46,249	48,601	49,338	49,730
Montgomery County, Tennessee	220,012	240,192	246,281	249,935
Moore County, Tennessee	6,467	6,802	6,822	6,920
Morgan County, Tennessee	21,037	21,542	22,075	22,160
Obion County, Tennessee	30,795	30,402	30,256	30,067
Overton County, Tennessee	22,510	23,352	23,582	23,787
Perry County, Tennessee	8,384	8,927	8,986	9,126
Pickett County, Tennessee	5,005	5,129	5,146	5,219
Polk County, Tennessee	17,536	18,064	18,408	18,592
Putnam County, Tennessee	79,874	83,902	85,011	86,612
Rhea County, Tennessee	33,235	34,264	34,716	34,844
Roane County, Tennessee	53,544	56,218	56,769	57,395
Robertson County, Tennessee	72,809	76,948	78,830	80,175
Rutherford County, Tennessee	341,482	370,483	380,086	386,352
Scott County, Tennessee	21,852	22,253	22,553	22,671
Sequatchie County, Tennessee	15,826	17,168	17,609	17,861
Sevier County, Tennessee	98,677	100,410	101,224	101,342
Shelby County, Tennessee	930,012	915,501	915,438	910,226
Smith County, Tennessee	19,906	20,538	20,785	20,981
Stewart County, Tennessee	13,656	14,269	14,373	14,439

Annual Estimates of the Resident Population for Counties in Tennessee: April 1, 2020 to July 1, 2025				
Geographic Area	April 1, 2020 Estimates Base	Population Estimate (as of July1)		
		2023	2024	2025
Sullivan County, Tennessee	158,146	161,953	162,709	163,759
Sumner County, Tennessee	196,289	208,501	212,181	215,538
Tipton County, Tennessee	60,976	61,957	62,306	62,287
Trousdale County, Tennessee	11,606	12,327	12,189	12,623
Unicoi County, Tennessee	17,911	17,823	17,925	17,856
Union County, Tennessee	19,807	20,760	21,136	21,450
Van Buren County, Tennessee	6,168	6,576	6,683	6,874
Warren County, Tennessee	40,953	42,615	43,544	43,717
Washington County, Tennessee	132,999	138,454	139,574	141,199
Wayne County, Tennessee	16,229	16,050	16,034	16,416
Weakley County, Tennessee	32,908	33,167	33,216	33,261
White County, Tennessee	27,351	28,715	29,227	29,612
Williamson County, Tennessee	247,790	264,898	268,486	272,061
Wilson County, Tennessee	147,745	164,275	170,340	175,033

[County Population Totals: 2020-2025 \(census.gov\)](#); [Index of /programs-surveys/popest/datasets \(census.gov\)](#)

The following maps depict the most recent statistical area boundaries. The first map groups metropolitan and micropolitan areas by their combined statistical area (CSA) and shades the areas accordingly. In July, 2023 the Office of Management and Budget released revised CSA and CBSA county delineations. Changes to the state's geographic areas did not result in any needed changes to Tennessee's ambient air quality monitoring network. These changes are summarized below:

#### Metropolitan Statistical Area Changes:

Nashville: addition of Hickman Co  
Knoxville: addition of Grainger Co  
Morristown: removal of Grainger Co  
Memphis: addition of Benton Co, MS

#### Micropolitan Statistical Area Changes

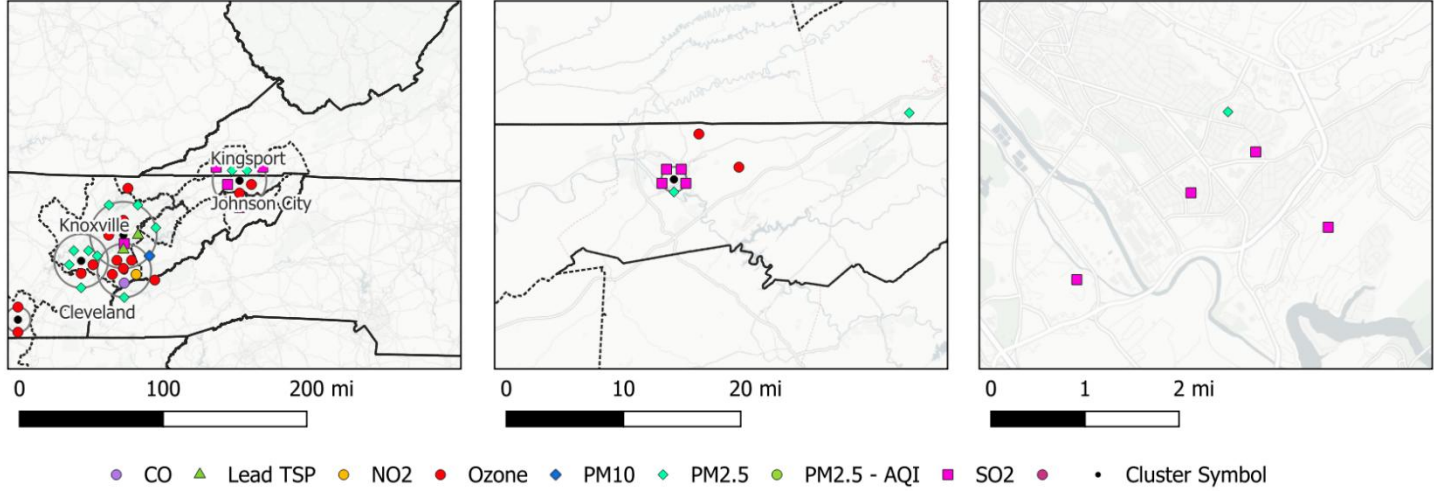
Athens: Addition of Meigs Co  
-Dayton: Removed Micro Area (Rhea Co)  
Tulahoma: Removal of Franklin Co  
+Winchester: New Micro Area (Franklin Co)  
Cookeville: Addition of White Co  
+Fayetteville: New Micro Area (Lincoln Co)  
-Brownsville: Removal of Micro Area (Haywood Co)

#### CSA Changes

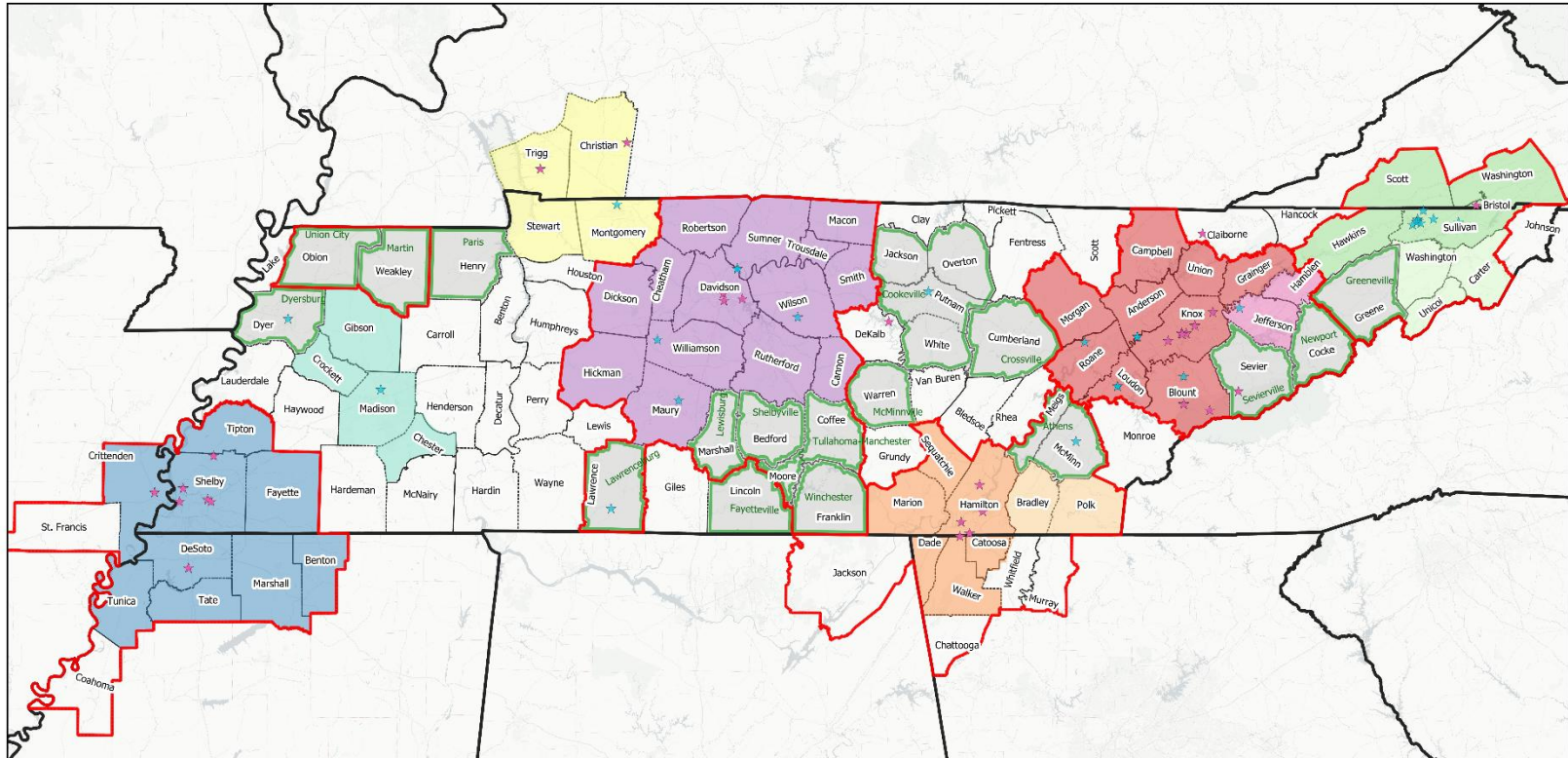
Chattanooga: Removal of Calhoun Micro (Gordon Co GA)  
Chattanooga: Addition of Meigs Co (Athens Micro)  
Chattanooga: Addition of Scottsboro Micro (Jackson Co AL)  
Chattanooga: Removal of Dayton Micro (Rhea Co)  
-Jackson: Removal of CSA  
Johnson City: Addition of Greeneville Micro (Greene Co)  
Memphis: Addition of Clarksdale Micro (Coahoma Co MS)  
Memphis: Addition of Benton Co  
Nashville: Addition of Tullahoma-Manchester Micro (Coffee Co & Moore Co)  
Nashville: Addition of Winchester Micro (Franklin Co)  
Huntsville: Addition of Fayetteville Micro (Lincoln Co)

The second map depicts the metropolitan area boundaries (dashed lines) and groups all the active air quality monitors together in clusters. Due to the difficulty in plotting sites with multiple pollutants and sites that are located in close proximity, the monitors are displayed using the cluster method,

where all monitors in an area are grouped together and concentric rings plot the symbols of each monitor by the pollutant they measure around the group's centroid. The outer ring represents the area of monitors being grouped. The example below shows this concept at multiple scales.



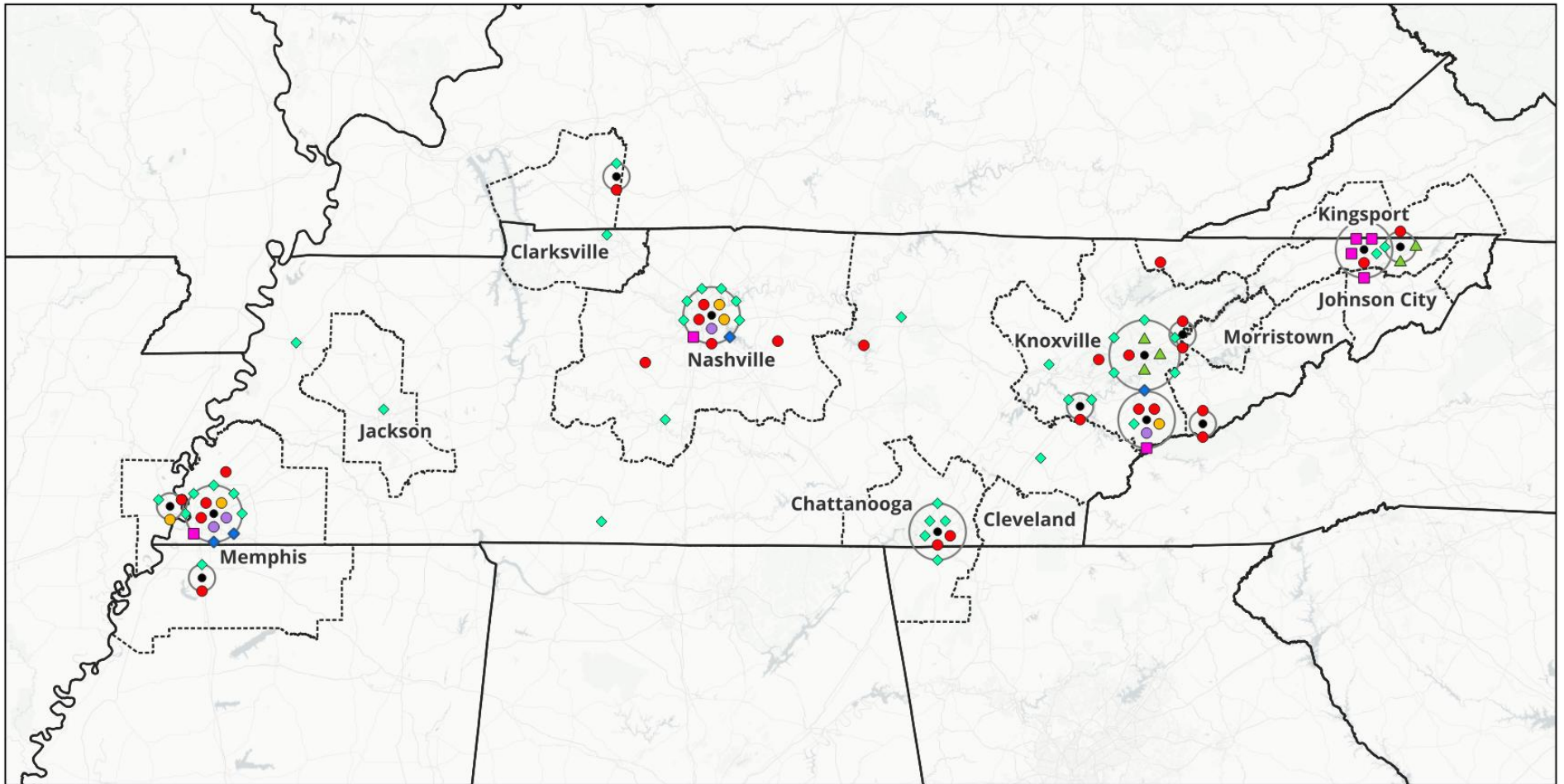
# Combined/Metropolitan/Micropolitan Statistical Areas of Tennessee



TN Monitors	<ul style="list-style-type: none"> <li>★ Tennessee Division Of Air Pollution Control</li> <li>★ Other Agency</li> </ul>	<ul style="list-style-type: none"> <li>▭ US States</li> <li>▭ Counties</li> <li>▭ Combined Statistical Areas</li> <li>▭ Micropolitan Statistical Areas</li> </ul>	<ul style="list-style-type: none"> <li>▭ Metropolitan Statistical Areas</li> <li>▭ Nashville</li> <li>▭ Memphis</li> <li>▭ Jackson</li> <li>▭ Clarksville</li> <li>▭ Chattanooga</li> <li>▭ Cleveland</li> <li>▭ Knoxville</li> </ul>	<ul style="list-style-type: none"> <li>▭ Morristown</li> <li>▭ Kingsport</li> <li>▭ Johnson City</li> </ul>
-------------	---	---	---	---

July 2025

## Tennessee Area Air Quality Monitors



# Appendix A: Tennessee Monitoring Site Agreement Letters

## Kentucky



April 7, 2025

Mr. Michael Kennedy, PE  
Director  
Kentucky Division for Air Quality  
Kentucky Department for Environmental Protection  
300 Sower Boulevard  
2<sup>nd</sup> Floor  
Frankfort, KY 40601

Dear Mr. Kennedy:

The United States Environmental Protection Agency’s (EPA) monitoring regulations found in 40 CFR Part 58, Appendix D states in part “The EPA recognizes that there may be situations where the EPA Regional Administrator and the affected State or local agencies may need to augment or divide the overall MSA/CSA monitoring responsibilities and requirements among these various agencies to achieve an effective network design. Full monitoring requirements apply separately to each affected State or local agency without an agreement between the affected agencies and the EPA Regional Administrator.” This revision of the CFR also describes the minimum monitoring requirements for the NAAQS pollutants. Tennessee and Kentucky share the Clarksville, TN-KY MSA, which is comprised of Trigg and Christian counties in Kentucky, and Montgomery and Stewart counties in Tennessee.

CBSA Code	Geographic Area	Legal/Statistical Area Description	2023 Pop Estimate	2020 Census
17300	Clarksville, TN-KY	Metropolitan Statistical Area	340495	320518

The Tennessee Division of Air Pollution Control (TDAPC) currently operates one (1) PM2.5 FEM continuous monitor at the Clarksville site (47-125-2001) in Montgomery County, TN. This site provides sufficient characterization of the particulate air quality in the entire Clarksville, TN-KY MSA and complies with the population and concentration-based monitoring requirements identified in the regulations found at 40 CFR 58, Appendix D.

The Kentucky Division for Air Quality (KDAQ) currently operates one (1) continuous PM2.5 FEM monitor and one (1) seasonal ozone monitor at the Hopkinsville site (21-047-0006) in Christian County, KY. This site is being relocated within the MSA with a proposed start date of July 1, 2025. The new location at Pennyrile Forest (21-047-0007) in Christian County, KY, will continue to operate one (1) continuous PM2.5 FEM monitor and one (1) seasonal ozone monitor. This site characterizes the air quality in the entire Clarksville, TN-KY MSA and complies with the requirements for both population concentration-based monitoring identified in 40 CFR Part 58, Appendix D.

---

Division of Air Pollution Control  
Davy Crockett Tower • 7<sup>th</sup> Floor  
500 James Robertson Parkway • Nashville, TN 37243  
Tel: 615-532-0554  
Air.Pollution.Control@tn.gov



The Tennessee Division of Air Pollution Control invites the Kentucky Division for Air Quality to participate in Tennessee's annual ambient air monitoring network review. Tennessee commits to notifying Kentucky in advance of any proposed monitor relocations or shutdowns in the Clarksville, TN-KY MSA. We respectfully request that Kentucky provide similar advanced notice to Tennessee regarding any proposed changes to monitoring sites within the Clarksville, TN-KY MSA. If you have technical questions, contact Bradley King at 615-417-1254 or [Bradley.King@tn.gov](mailto:Bradley.King@tn.gov). I may be contacted at 615-426-9250 or [Michelle.B.Walker@tn.gov](mailto:Michelle.B.Walker@tn.gov).

Sincerely,

*Michelle W. Owenby*

Michelle Walker Owenby  
Director  
Division of Air Pollution Control  
Tennessee Department of Environment and Conservation

---

Division of Air Pollution Control  
Davy Crockett Tower - 7<sup>th</sup> Floor  
500 James Robertson Parkway • Nashville, TN 37243  
Tel: 615-532-0554  
[Air.Pollution.Control@tn.gov](mailto:Air.Pollution.Control@tn.gov)

## Kentucky Response



**Andy Beshear**  
GOVERNOR

### ENERGY AND ENVIRONMENT CABINET DEPARTMENT FOR ENVIRONMENTAL PROTECTION

300 Sower Boulevard  
Frankfort, Kentucky 40601  
Phone: (502) 564-2150  
Fax: 502-564-4245

**Rebecca Goodman**  
SECRETARY

**Anthony R. Hatton**  
COMMISSIONER

May 5, 2025

Ms. Michelle Walker Owenby  
Director  
Division of Air Pollution Control  
Tennessee Department of Environment and Conservation  
Davy Crockett Tower, 7<sup>th</sup> Floor  
500 James Robertson Parkway  
Nashville, TN 37243

Dear Ms. Owenby:

In a letter from your office dated April 7, 2025, the Tennessee Division of Air Pollution Control (TDAPC) operates a continuous PM<sub>2.5</sub> monitor in order to meet the minimum network design requirements stated in 40 CFR 58, Appendix D for the Clarksville, TN-KY metropolitan statistical area (MSA). The Kentucky Division for Air Quality (KDAQ) appreciates TDAPC's cooperation and appreciates the invitation to participate in TDAPC's annual air monitoring review.

KDAQ currently operates one (1) continuous PM<sub>2.5</sub> FEM monitor and one (1) continuous ozone monitor at the Hopkinsville site (21-047-0006) in Christian County, KY. This site is being relocated within Christian County with a proposed start date of July 1, 2025. The new location at Pennyrile Forest (21-047-0007) will continue to operate one (1) continuous PM<sub>2.5</sub> FEM monitor and one (1) continuous ozone monitor.

In accordance with Table D-2 and D-5 of 40 CFR 58, Appendix D, one (1) ozone monitor and one (1) PM<sub>2.5</sub> monitor is required to be operated in the Clarksville, TN-KY MSA, based upon currently available population estimates from the US Census Bureau, as well as 2022-2024 ozone and PM<sub>2.5</sub> design values.

Geographic Area	Code	2024 USCB Population Est.	2022-2024 3-Year O <sub>3</sub> DV	2022-2024 3-Year PM <sub>2.5</sub> DV
Christian County, KY	21-047	71,006	0.065	7.9
Trigg County, KY	21-221	14,559	0.059 (CASTNET)*	-
Montgomery County, TN	47-125	246,025	-	6.7
Stewart County, TN	47-161	14,365	-	-
Clarksville, TN-KY MSA	17300	345,955	0.065	7.9

*\*Does not meet data completeness requirements*

@KentuckyEEC | EEC.ky.gov



An Equal Opportunity Employer M/F/D

Ms. Michelle Walker Owenby  
May 5, 2025  
Page 2

To satisfy regulatory requirements, KDAQ operates one (1) ozone monitor and one (1) PM<sub>2.5</sub> monitor at the Pennyrite site. KDAQ appreciates and accepts TDAPC's offer to participate in its annual ambient air monitoring network review. KDAQ will provide advanced notice of any changes to the two (2) Kentucky monitors included in the Clarksville, TN-KY MSA. If you have further questions or concerns, please contact Jenna Nall at [jenna.nall@ky.gov](mailto:jenna.nall@ky.gov).

Sincerely,



Michael Kennedy,  
Director

MK/jln

Electronic cc:

- Bradly King, TDAPC
- Wayne Bray, KDAQ

# Virginia



February 16, 2021

Michael Dowd  
Director  
Air and Renewable Energy Division  
Virginia Department of Environmental Quality  
P.O. Box 1105  
Richmond, VA 23218

Dear Mr. Dowd:

The United States Environmental Protection Agency's (EPA) revised monitoring regulations found in 40 CFR Part 58, Appendix D states in part: "The EPA recognizes that there may be situations where the EPA Regional Administrator and the affected State or local agencies may need to augment or divide the overall MSA/CSA monitoring responsibilities and requirements among these various agencies to achieve an effective network design. Full monitoring requirements apply separately to each affected State or local agency in the absence of an agreement between the affected agencies and the EPA Regional Administrator." This revision of the CFR also describes the minimum monitoring requirements for the NAAQS pollutants. Tennessee and Virginia share the Kingsport-Bristol-Bristol, TN-VA MSA, which is comprised of Scott and Washington counties in Virginia and Hawkins and Sullivan counties in Tennessee.

CBSA Code	Geographic Area	Legal/Statistical Area Description	2019 Pop Estimate	2010 Census
28700	Kingsport-Bristol-Bristol, TN-VA	Metropolitan Statistical Area	307202	309544

The Tennessee Division of Air Pollution Control (TDEC DAPC) currently operates one (1) FEM PM<sub>2.5</sub> continuous monitor at site 47-163-1007, two (2) seasonal ozone monitors at sites 47-163-2002 and 47-163-2003, one (1) collocated lead monitoring site (47-163-3004), and four (4) SO<sub>2</sub> monitoring sites; Skyland Drive (47-163-6002), Ross N Robinson (47-163-6001), Happy Hill (47-163-6004), and Andrew Johnson (47-163-6003) all in Sullivan County. These monitoring sites are sufficient to properly characterize the particular air quality in the Kingsport-Bristol-Bristol, TN-VA MSA and comply with the requirements for both population and concentration-based monitoring identified in the revised monitoring regulations found in 40 CFR Part 58, Appendix D.

The TDEC DAPC SO<sub>2</sub> monitoring network also satisfies the need for more "robust" monitoring to adequately characterize the Kingsport SO<sub>2</sub> non-attainment area in Sullivan County, Tennessee. The monitoring sites in the TDEC DAPC SO<sub>2</sub> monitoring network are located in close proximity to the maximum receptor areas indicated in the models included with the attainment/maintenance plan.

---

Division of Air Pollution Control  
William Snodgrass Tennessee Tower • 15<sup>th</sup> Floor • Nashville, TN 37243  
312 Rosa L. Parks Avenue • Nashville, TN 37243  
Tel: 615-532-0554 • Fax: 615-532-0614  
Air.Pollution.Control@tn.gov



TDEC DAPC would like to invite Virginia's Department of Environmental Quality to participate in the Tennessee's annual ambient monitoring network review. Tennessee commits to notifying Virginia in advance of any proposed monitor shutdowns or relocations within the Kingsport-Bristol-Bristol, TN-VA MSA and respectfully requests that Virginia notify Tennessee of any monitoring network additions or changes within the Kingsport-Bristol-Bristol, TN-VA MSA. Advanced notice would allow both parties to make adequate monitoring arrangements to ensure the MSA monitoring required are being met. If you have technical questions, please contact Bradley King at 615-687-7042 or [Bradley.King@tn.gov](mailto:Bradley.King@tn.gov). I may be contacted at 615-532-9668 or [Michelle.B.Walker@tn.gov](mailto:Michelle.B.Walker@tn.gov).

Sincerely,

A handwritten signature in blue ink that reads "Michelle W. Owenby". The signature is written in a cursive style.

Michelle Walker Owenby  
Director  
Division of Air Pollution Control  
Department of Environment and Conservation

---

Division of Air Pollution Control  
William Snodgrass Tennessee Tower • 15<sup>th</sup> Floor • Nashville, TN 37243  
312 Rosa L. Parks Avenue • Nashville, TN 37243  
Tel: 615-532-0554 • Fax: 615-532-0614  
[Air.Pollution.Control@tn.gov](mailto:Air.Pollution.Control@tn.gov)

## Virginia Response



### COMMONWEALTH of VIRGINIA

#### DEPARTMENT OF ENVIRONMENTAL QUALITY

Street address: 1111 E. Main Street, Suite 1400, Richmond, Virginia 23219

Mailing address: P.O. Box 1105, Richmond, Virginia 23218

[www.deq.virginia.gov](http://www.deq.virginia.gov)

Matthew J. Strickler  
Secretary of Natural Resources

David K. Paylor  
Director

(804) 698-4000  
1-800-592-5482

June 29, 2021

Michelle Walker Owenby, Director  
Division of Air Pollution Control  
Wm. Snodgrass Tennessee Tower – 15<sup>th</sup> floor  
Nashville, TN 37243

Dear Ms. Owenby,

In your letter dated February 16, 2021 you identified the Kingsport-Bristol-Bristol, TN-VA Metropolitan Statistical Area (MSA) as including Scott and Washington Counties within the Commonwealth of Virginia and that Tennessee maintains several air pollution monitoring devices within the Tennessee jurisdictions of that MSA. Included in this listing are identified four (4) separate Sulfur Dioxide (SO<sub>2</sub>) monitors that are intended to characterize the Non-attainment Area for SO<sub>2</sub> in Sullivan County. Your letter is intended to address the requirement located in 40 CFR Part 58, Appendix D that State agencies that share MSAs are required to meet the monitoring requirements of the MSA independently in the absence of an agreement between the affected states.

Virginia maintains one (1) air monitoring location in the affected MSA; Site ID. 51-520-0006 PM2.5 FRM monitor at Highland View Elementary School in Bristol, Virginia. This site has been in operation since January, 1999. Virginia commits to notifying Tennessee in advance of any proposed shutdown of this monitor or relocation within the Kingsport-Bristol-Bristol, TN-VA MSA and any additions of any monitoring systems within the MSA. Please let me know if you have any questions or comments regarding the above commitment.

Sincerely,

Michael G. Dowd

Digitally signed by Michael G. Dowd  
DN: cn = Michael G. Dowd email = michael.dowd@deq.virginia.gov  
c = US o = Va. Dept. of Environmental Quality ou = Director, Air  
and Renewable Energy Division  
Date: 2021.08.29 16:01:33 -0500

Michael G. Dowd  
Director, Division of Air and  
Renewable Energy

Shelby County – TN - AR – MS



LEE HARRIS  
MAYOR

# SHELBY COUNTY HEALTH DEPARTMENT



Public Health  
*Prevent. Promote. Protect.*  
Shelby County Health Department

BRUCE RANDOLPH, MD, MPH  
INTERIM HEALTH DIRECTOR & HEALTH OFFICER

May 15, 2026

Ms. Michelle Walker Owenby, Air Director  
Tennessee Department of Environment and Conservation Air Pollution Control Division  
Davy Crockett Tower  
500 James Robertson Parkway, 7th Floor  
Nashville, Tennessee 37243

Mr. Jaricus Whitlock, P.E., Chief, Air Division  
Mississippi Department of Environmental Quality  
Office of Pollution Control  
P.O. Box 2261  
Jackson, Mississippi 39225

Demetria Kimbrough, Deputy Director, Office of Air Quality  
Division of Environmental Quality  
Arkansas Department of Energy and Environment  
5301 Northshore Drive  
North Little Rock, Arkansas 72118-5317

Dear All,

In accordance with the provisions of the Memorandum of Agreement (MOA) signed in May and June of 2008 between the Shelby County Health Department (SCHD), Mississippi Department of Environmental Quality (MDEQ), and the Arkansas Department of Energy and Environment-Division of Environmental Quality (DEQ), this letter serves as a notification that each respective agency in the MOA have been contacted by the SCHD.

Pending final EPA approval, the SCHD plans to begin operation of a sixth air monitoring site in southwest Memphis (Riverview). The Riverview site is planned to contain a carbon monoxide monitor as well as an ozone monitor. Our goal is to have the site operational and online collecting data (for submittal to AQS) starting Quarter 3 (July 1<sup>st</sup>). We also plan to complete changes later in the year at the Alabama Ave. and Near Road sites within the SCHD air monitoring network (see monitoring charts). After consulting with MDEQ and DEQ, we learned that there will be no other changes at this time. With this MOA, all agencies are meeting EPA monitoring requirements.

#### Mission

*To promote, protect and improve the health of ALL in Shelby County.*

---

814 Jefferson Avenue ♦ Memphis, TN 38105 ♦ 901 222-9000 ♦ [www.shelbytnhealth.com](http://www.shelbytnhealth.com)

Page 2

If you have any questions, please call me at (901) 222-9193.

Sincerely,



Kasia Smith Alexander

Deputy Director, Shelby County Health Department

Mission

*To promote, protect and improve the health and environment of all Shelby County residents.*

---

814 Jefferson Avenue ♦ Memphis, TN 38105 ♦ 901 222-9000 ♦ [www.shelbytnhealth.com](http://www.shelbytnhealth.com)

**MEMORANDUM OF AGREEMENT  
ON AIR QUALITY MONITORING FOR CRITERIA  
POLLUTANTS FOR  
THE MEMPHIS, TN- MS- AR  
METROPOLITAN STATISTICAL AREA (MSA)**

**Participating Agencies:**

Shelby County Health Department (SCHD)  
Air Pollution Control Program

Mississippi Department of Environmental Quality (MDEQ)  
Office of Pollution Control, Air Division

Arkansas Department of Energy and Environment  
Division of Environmental Quality (DEQ)

**PURPOSE / OBJECTIVE / GOALS**

The purpose of this Memorandum of Agreement (MOA) is to inform the entities of the Memphis, Tennessee-Mississippi-Arkansas Metropolitan Statistical Area of monitoring network changes. The MOA between SCHD, MDEQ, and DEQ is to collectively meet United States Environmental Protection Agency (EPA) minimum monitoring requirements for particles of an aerodynamic diameter of 10 micrometers and less (PM<sub>2.5</sub>), and ozone; as well as other criteria pollutants air quality monitoring deemed necessary to meet the needs of the MSA as determined reasonable by all parties. This MOA will formalize and reaffirm the collective agreement in order to provide adequate criteria pollutant monitoring for the Memphis, TN-MS-AR MSA as required by 40 CFR 58 Appendix D, Section 2, (e).

PM<sub>2.5</sub> MSA monitoring network include:

<b>County</b>	<b>Federal Reference Method PM<sub>2.5</sub></b>	<b>Federal Equivalent Method PM<sub>2.5</sub></b>	<b>Continuous PM<sub>2.5</sub></b>	<b>Speciation PM<sub>2.5</sub></b>	<b>Collocated PM<sub>2.5</sub></b>
Shelby County, TN <b>SCHD</b>	4 (Currently includes 2 at Alabama Ave, 1 at Shelby Farms-NCORE, & 1 at Near Rd*)	3* (Currently 1 in field)		2 (Chemical Speciation and Carbon Speciation-both at Shelby Farms-NCORE)	2 (will expand to 3 after all T640x instruments are installed)
Crittenden County, AR <b>DEQ</b>	1		1 (NAAQS excluded-AQI info only)		
DeSoto County, MS <b>MDEQ</b>		1			

\*With EPA permission, the SCHD is planning to install two T640x monitors (Alabama Ave. replaces the PM<sub>2.5</sub> 2025-POC 2 sampler-1:12 while keeping the PM<sub>2.5</sub> FRM 2025i-1:3 sampler. Addition of T640x to Macon Cv-Near Rd allowing for collocation with PM<sub>2.5</sub> FRM 2025i 1:3 sampler) later this year.

Criteria Air Pollutant MSA monitoring network include:

<b>County</b>	<b>PM<sub>10</sub></b>	<b>PM<sub>2.5-10</sub></b>	<b>O<sub>3</sub></b>	<b>NO/NO<sub>2</sub>/NO<sub>x</sub>/NO<sub>y</sub></b>	<b>CO</b>	<b>SO<sub>2</sub></b>
Shelby County, TN <b>SCHD</b>	4 (Currently 2 in field-1 at Alabama Ave. & 1 at Shelby Farms-NCORE)*	3* (Currently 1 in field)	4** (3 currently in field)	3 (NO/NO <sub>2</sub> /NO <sub>x</sub> at Macon-Near Rd, NO/NO <sub>y</sub> (trace) at Shelby Farms-NCORE, True NO <sub>2</sub> (trace) at Shelby Farms-PAMS)	3** (2 currently in field)	1 (trace at Shelby Farms-NCORE)
Crittenden County, AR <b>DEQ</b>			1	1		
DeSoto County, MS <b>MDEQ</b>			1			

\* With EPA permission, the SCHD is planning to install two T640x monitors (Alabama Ave. replaces the TEOM PM<sub>10</sub> continuous monitor. Addition of T640x monitor includes PM<sub>10</sub> & PM<sub>2.5-10</sub>).

\*\* Pending EPA final approval, SCHD will begin operating Riverview site with CO & O<sub>3</sub> monitors.

## **RESPONSIBILITIES / ACTIONS**

Each of the parties to this Agreement is responsible for ensuring that its obligations under the MOA are met. As conditions warrant, the affected agencies may conduct telephone conference calls, meetings, or other communications to discuss monitoring activities for the MSA. Each affected agency shall inform the other affected agencies via telephone or email of any monitoring changes occurring within its jurisdiction of the MSA at its earliest convenience, after learning of the need for the change or making the changes. Such unforeseen changes may include evictions from monitoring sites, destruction of monitoring sites due to natural disasters, or any occurrences that result in an extended (greater than one quarter) or permanent change in the monitoring network.

## **LIMITATIONS**

- All commitments made in this MOA are subject to the availability of appropriated funds and each agency's budget priorities. Nothing in this MOA obligates SCHD, MDEQ, or DEQ to expend appropriations or to enter into any contract, assistance agreement, interagency agreement or other financial obligation.
- This MOA is neither a fiscal nor a funds obligation document. Any endeavor involving reimbursement or contribution of funds between parties to this agreement will be handled in accordance with applicable laws, regulations, and procedures, and will be subject to separate agreements that will be affected in writing by representatives of the parties.
- This MOA does not create any right or benefit enforceable by law or equity against SCHD, MDEQ, or DEQ, their officers or employees, or any other person. This MOA does not apply to any entity outside SCHD, MDEQ, or DEQ.
- No proprietary information or intellectual property is anticipated to arise out of this MOA.

## **TERMINATION**

This Memorandum of Agreement may be revised upon the mutual consent of SCHD, MDEQ and DEQ. Each party reserves the right to terminate this MOA. A thirty (30) day written notice must be given prior to the date of termination.

## Arkansas Response

*<Pending Receipt>*

## Mississippi Response

*<Pending Receipt>*

## Appendix B: Sections of the CFR Referred to in the 2026 AMNP

§ 58.10 Annual monitoring network plan and periodic network assessment.

- (a)
- (1) Beginning July 1, 2007, the state, or where applicable local, agency shall submit to the Regional Administrator an annual monitoring network plan which shall provide for the documentation of the establishment and maintenance of an air quality surveillance system that consists of a network of SLAMS monitoring stations that can include FRM, FEM, and ARM monitors that are part of SLAMS, NCore, CSN, PAMS, and SPM stations. The plan shall include a statement of whether the operation of each monitor meets the requirements of appendices A, B, C, D, and E of this part, where applicable. The Regional Administrator may require additional information in support of this statement. The annual monitoring network plan must be made available for public inspection and comment for at least 30 days prior to submission to the EPA and the submitted plan shall include and address, as appropriate, any received comments.
- (2) Any annual monitoring network plan that proposes network modifications (including new or discontinued monitoring sites, new determinations that data are not of sufficient quality to be compared to the NAAQS, and changes in identification of monitors as suitable or not suitable for comparison against the annual PM<sub>2.5</sub> NAAQS) to SLAMS networks is subject to the approval of the EPA Regional Administrator, who shall approve or disapprove the plan within 120 days of submission of a complete plan to the EPA.
- (3) The plan for establishing required NCore multipollutant stations shall be submitted to the Administrator not later than July 1, 2009. The plan shall provide for all required stations to be operational by January 1, 2011.
- (4) A plan for establishing source-oriented Pb monitoring sites in accordance with the requirements of appendix D to this part for Pb sources emitting 1.0 tpy or greater shall be submitted to the EPA Regional Administrator no later than July 1, 2009, as part of the annual network plan required in paragraph (a)(1) of this section. The plan shall provide for the required source-oriented Pb monitoring sites for Pb sources emitting 1.0 tpy or greater to be operational by January 1, 2010. A plan for establishing source-oriented Pb monitoring sites in accordance with the requirements of appendix D to this part for Pb sources emitting equal to or greater than 0.50 tpy but less than 1.0 tpy shall be submitted to the EPA Regional Administrator no later than July 1, 2011. The plan shall provide for the required source-oriented Pb monitoring sites for Pb sources emitting equal to or greater than 0.50 tpy but less than 1.0 tpy to be operational by December 27, 2011.
- (5)
- (i) A plan for establishing or identifying an area-wide NO<sub>2</sub> monitor, in accordance with the requirements of Appendix D, section 4.3.3 to this part, shall be submitted as part of the Annual Monitoring Network Plan to the EPA Regional Administrator by July 1, 2012. The plan shall provide for these required monitors to be operational by January 1, 2013.
- (ii) A plan for establishing or identifying any NO<sub>2</sub> monitor intended to characterize vulnerable and susceptible populations, as required in Appendix D, section 4.3.4 to this part, shall be submitted as part of the Annual Monitoring Network Plan to the EPA Regional Administrator by July 1, 2012. The plan shall provide for these required monitors to be operational by January 1, 2013.

(iii) A plan for establishing a single near-road NO<sub>2</sub> monitor in CBSAs having 1,000,000 or more persons, in accordance with the requirements of Appendix D, section 4.3.2 to this part, shall be submitted as part of the Annual Monitoring Network Plan to the EPA Regional Administrator by July 1, 2013. The plan shall provide for these required monitors to be operational by January 1, 2014.

(iv) A plan for establishing a second near-road NO<sub>2</sub> monitor in any CBSA with a population of 2,500,000 persons or more, or a second monitor in any CBSA with a population of 1,000,000 or more persons that has one or more roadway segments with 250,000 or greater AADT counts, in accordance with the requirements of appendix D, section 4.3.2 to this part, shall be submitted as part of the Annual Monitoring Network Plan to the EPA Regional Administrator by July 1, 2014. The plan shall provide for these required monitors to be operational by January 1, 2015.

(6) A plan for establishing SO<sub>2</sub> monitoring sites in accordance with the requirements of appendix D to this part shall be submitted to the EPA Regional Administrator by July 1, 2011 as part of the annual network plan required in paragraph (a) (1). The plan shall provide for all required SO<sub>2</sub> monitoring sites to be operational by January 1, 2013.

(7) A plan for establishing CO monitoring sites in accordance with the requirements of appendix D to this part shall be submitted to the EPA Regional Administrator. Plans for required CO monitors shall be submitted at least six months prior to the date such monitors must be established as required by section 58.13.

(8)

(i) A plan for establishing near-road PM<sub>2.5</sub> monitoring sites in CBSAs having 2.5 million or more persons, in accordance with the requirements of appendix D to this part, shall be submitted as part of the annual monitoring network plan to the EPA Regional Administrator by July 1, 2014. The plan shall provide for these required monitoring stations to be operational by January 1, 2015.

(ii) A plan for establishing near-road PM<sub>2.5</sub> monitoring sites in CBSAs having 1 million or more persons, but less than 2.5 million persons, in accordance with the requirements of appendix D to this part, shall be submitted as part of the annual monitoring network plan to the EPA Regional Administrator by July 1, 2016. The plan shall provide for these required monitoring stations to be operational by January 1, 2017.

(9) The annual monitoring network plan shall provide for the required O<sub>3</sub> sites to be operating on the first day of the applicable required O<sub>3</sub> monitoring season in effect on January 1, 2017 as listed in Table D-3 of appendix D of this part.

(10) A plan for making Photochemical Assessment Monitoring Stations (PAMS) measurements, if applicable, in accordance with the requirements of appendix D paragraph 5(a) of this part shall be submitted to the EPA Regional Administrator no later than July 1, 2018. The plan shall provide for the required PAMS measurements to begin by June 1, 2019.

(11) An Enhanced Monitoring Plan for O<sub>3</sub>, if applicable, in accordance with the requirements of appendix D paragraph 5(h) of this part shall be submitted to the EPA Regional Administrator no later than October 1, 2019 or two years following the effective date of a designation to a classification of Moderate or above O<sub>3</sub> nonattainment, whichever is later.

(12) A detailed description of the PAMS network being operated in accordance with the requirements of appendix D to this part shall be submitted as part of the annual monitoring network plan for review by the EPA Administrator. The PAMS Network Description described in section 5 of appendix D may be used to meet this requirement.

(b) The annual monitoring network plan must contain the following information for each existing and proposed site:

(1) The AQS site identification number.

(2) The location, including street address and geographical coordinates.

(3) The sampling and analysis method(s) for each measured parameter.

(4) The operating schedules for each monitor.

(5) Any proposals to remove or move a monitoring station within a period of 18 months following plan submittal.

(6) The monitoring objective and spatial scale of representativeness for each monitor as defined in appendix D to this part.

(7) The identification of any sites that are suitable and sites that are not suitable for comparison against the annual PM<sub>2.5</sub> NAAQS as described in § 58.30.

(8) The MSA, CBSA, CSA or other area represented by the monitor.

(9) The designation of any Pb monitors as either source-oriented or non-source-oriented according to Appendix D to 40 CFR part 58.

(10) Any source-oriented monitors for which a waiver has been requested or granted by the EPA Regional Administrator as allowed for under paragraph 4.5(a)(ii) of Appendix D to 40 CFR part 58.

(11) Any source-oriented or non-source-oriented site for which a waiver has been requested or granted by the EPA Regional Administrator for the use of Pb-PM<sub>10</sub> monitoring in lieu of Pb-TSP monitoring as allowed for under paragraph 2.10 of Appendix C to 40 CFR part 58.

(12) The identification of required NO<sub>2</sub> monitors as near-road, area-wide, or vulnerable and susceptible population monitors in accordance with Appendix D, section 4.3 of this part.

(13) The identification of any PM<sub>2.5</sub> FEMs and/or ARMs used in the monitoring agency's network where the data are not of sufficient quality such that data are not to be compared to the NAAQS. For required SLAMS where the agency identifies that the PM<sub>2.5</sub> Class III FEM or ARM does not produce data of sufficient quality for comparison to the NAAQS, the monitoring agency must ensure that an operating FRM or filter-based FEM meeting the sample frequency requirements described in § 58.12 or other Class III PM<sub>2.5</sub> FEM or ARM with data of sufficient quality is operating and reporting data to meet the network design criteria described in appendix D to this part.

(c) The annual monitoring network plan must document how state and local agencies provide for the review of changes to a PM2.5 monitoring network that impact the location of a violating PM2.5 monitor. The affected state or local agency must document the process for obtaining public comment and include any comments received through the public notification process within their submitted plan.

(d) The state, or where applicable local, agency shall perform and submit to the EPA Regional Administrator an assessment of the air quality surveillance system every 5 years to determine, at a minimum, if the network meets the monitoring objectives defined in appendix D to this part, whether new sites are needed, whether existing sites are no longer needed and can be terminated, and whether new technologies are appropriate for incorporation into the ambient air monitoring network. The network assessment must consider the ability of existing and proposed sites to support air quality characterization for areas with relatively high populations of susceptible individuals (e.g., children with asthma), and, for any sites that are being proposed for discontinuance, the effect on data users other than the agency itself, such as nearby states and tribes or health effects studies. The state, or where applicable local, agency must submit a copy of this 5-year assessment, along with a revised annual network plan, to the Regional Administrator. The assessments are due every five years beginning July 1, 2010.

(e) All proposed additions and discontinuations of SLAMS monitors in annual monitoring network plans and periodic network assessments are subject to approval according to § 58.14.

[71 FR 61298, Oct. 17, 2006, as amended at 72 FR 32210, June 12, 2007; 73 FR 67059, Nov. 12, 2008; 73 FR 77517, Dec. 19, 2008; 75 FR 6534, Feb. 9, 2010; 75 FR 35601, June 22, 2010; 75 FR 81137, Dec. 27, 2010; 76 FR 54341, Aug. 31, 2011; 78 FR 16188, Mar. 14, 2013; 78 FR 3282, Jan. 15, 2013; 80 FR 65466, Oct. 26, 2015; 81 FR 17279, Mar. 28, 2016; 81 FR 96388, Dec. 30, 2016]

## Appendix C: Monitoring Network Requirements

### Ozone Monitoring Network Requirements

[40 CFR 58 Subpart G, Appendix D to Part 58 current as of April 17, 2025](#)

4.1 Ozone (O<sub>3</sub>) Design Criteria. (a) State, and where appropriate, local agencies must operate O<sub>3</sub> sites for various locations depending upon area size (in terms of population and geographic characteristics) and typical peak concentrations (expressed in percentages below, or near the O<sub>3</sub> NAAQS). Specific SLAMS O<sub>3</sub> site minimum requirements are included in Table D-2 of this appendix. The NCore sites are expected to complement the O<sub>3</sub> data collection that takes place at single-pollutant SLAMS sites, and both types of sites can be used to meet the network minimum requirements. The total number of O<sub>3</sub> sites needed to support the basic monitoring objectives of public data reporting, air quality mapping, compliance, and understanding O<sub>3</sub>-related atmospheric processes will include more sites than these minimum numbers required in Table D-2 of this appendix. The EPA Regional Administrator and the responsible State or local air monitoring agency must work together to design and/or maintain the most appropriate O<sub>3</sub> network to service the variety of data needs in an area.

TABLE D-2 OF APPENDIX D TO PART 58 SLAMS MINIMUM O<sub>3</sub> MONITORING REQUIREMENTS

MSA population <sup>1, 2</sup>	Most recent 3-year design value concentrations $\geq$ 85% of any O <sub>3</sub> NAAQS <sup>3</sup>	Most recent 3-year design value concentrations <85% of any O <sub>3</sub> NAAQS <sup>3,4</sup>
>10 million	4	2
4-10 million	3	1
350,000-<4 million	2	1
50,000-<350,000 <sup>5</sup>	1	0

1. Minimum monitoring requirements apply to the metropolitan statistical area (MSA).
2. Population based on latest available census figures.
3. The ozone (O<sub>3</sub>) National Ambient Air Quality Standards (NAAQS) levels and forms are defined in 40 CFR part 50.
4. These minimum monitoring requirements apply in the absence of a design value.
5. Metropolitan statistical areas (MSA) must contain an urbanized area of 50,000 or more population.

(b) Within an O<sub>3</sub> network, at least one O<sub>3</sub> site for each MSA, or CSA if multiple MSAs are involved, must be designed to record the maximum concentration for that particular metropolitan area. More than one maximum concentration site may be necessary in some areas. Table D-2 of this appendix does not account for the full breadth of additional factors that would be considered in designing a complete O<sub>3</sub> monitoring program for an area. Some of these additional factors include geographic size, population density, complexity of terrain and meteorology, adjacent O<sub>3</sub> monitoring programs, air pollution transport from neighboring areas, and measured air quality in comparison to all forms of the O<sub>3</sub> NAAQS (i.e., 8-hour and 1-hour forms). Networks must be designed to account for all of these area characteristics. Network designs must be re-examined in periodic network assessments. Deviations from the above O<sub>3</sub> requirements are allowed if approved by the EPA Regional Administrator.

### CO Monitoring Network Requirements

40 CFR 58 Subpart G, Appendix D to Part 58

4.2.1 General Requirements. (a) Except as provided in subsection (b), one CO monitor is required to operate collocated with one required near-road NO<sub>2</sub> monitor, as required in Section 4.3.2 of this part, in CBSAs having a population of 1,000,000 or more persons. If a CBSA has more than one required near-road NO<sub>2</sub> monitor, only one CO monitor is required to be collocated with a near-road NO<sub>2</sub> monitor within that CBSA.

(b) If a state provides quantitative evidence demonstrating that peak ambient CO concentrations would occur in a near-road location which meets microscale siting criteria in Appendix E of this part but is not a near-road NO<sub>2</sub> monitoring site, then the EPA Regional Administrator may approve a request by a state to use such an alternate near-road location for a CO monitor in place of collocating a monitor at near-road NO<sub>2</sub> monitoring site.

### **NO<sub>2</sub> Monitoring Network Requirements**

40 CFR 58 Subpart G, Appendix D to Part 58

#### 4.3.2 Requirement for Near-road NO<sub>2</sub> Monitors

(a) Within the NO<sub>2</sub> network, there must be one monitoring station in each CBSA with a population of 1,000,000 or more persons to monitor a location of expected highest NO<sub>2</sub> concentrations representing the neighborhood or larger spatial scales. PAMS sites collecting NO<sub>2</sub> data that are situated in an area of expected high NO<sub>2</sub> concentrations at the neighborhood or larger spatial scale may be used to satisfy this minimum monitoring requirement when the NO<sub>2</sub> monitor is operated year round. Emission inventories and meteorological analysis should be used to identify the appropriate locations within a CBSA for locating required area-wide NO<sub>2</sub> monitoring stations. CBSA populations shall be based on the latest available census figures.

(1) The near-road NO<sub>2</sub> monitoring sites shall be selected by ranking all road segments within a CBSA by AADT and then identifying a location or locations adjacent to those highest ranked road segments, considering fleet mix, roadway design, congestion patterns, terrain, and meteorology, where maximum hourly NO<sub>2</sub> concentrations are expected to occur and siting criteria can be met in accordance with [appendix E of this part](#). Where a state or local air monitoring agency identifies multiple acceptable candidate sites where maximum hourly NO<sub>2</sub> concentrations are expected to occur, the monitoring agency shall consider the potential for population exposure in the criteria utilized to select the final site location. Where one CBSA is required to have two near-road NO<sub>2</sub> monitoring stations, the sites shall be differentiated from each other by one or more of the following factors: fleet mix; congestion patterns; terrain; geographic area within the CBSA; or different route, interstate, or freeway designation.

(b) Measurements at required near-road NO<sub>2</sub> monitor sites utilizing chemiluminescence FRMs must include at a minimum: NO, NO<sub>2</sub>, and NO<sub>x</sub>.

### **SO<sub>2</sub> Monitoring Network Requirements**

40 CFR 58 Subpart G, Appendix D to Part 58

#### 4.4 Sulfur Dioxide (SO<sub>2</sub>) Design Criteria.

4.4.1 General Requirements. (a) State and, where appropriate, local agencies must operate a minimum number of required SO<sub>2</sub> monitoring sites as described below..

4.4.2 Requirement for Monitoring by the Population Weighted Emissions Index. (a) The population weighted emissions index (PWEI) shall be calculated by States for each core based statistical area (CBSA) they contain or

share with another State or States for use in the implementation of or adjustment to the SO<sub>2</sub> monitoring network. The PWEI shall be calculated by multiplying the population of each CBSA, using the most current census data or estimates, and the total amount of SO<sub>2</sub> in tons per year emitted within the CBSA area, using an aggregate of the most recent county level emissions data available in the National Emissions Inventory for each county in each CBSA. The resulting product shall be divided by one million, providing a PWEI value, the units of which are million persons-tons per year. For any CBSA with a calculated PWEI value equal to or greater than 1,000,000, a minimum of three SO<sub>2</sub> monitors are required within that CBSA. For any CBSA with a calculated PWEI value equal to or greater than 100,000, but less than 1,000,000, a minimum of two SO<sub>2</sub> monitors are required within that CBSA. For any CBSA with a calculated PWEI value equal to or greater than 5,000, but less than 100,000, a minimum of one SO<sub>2</sub> monitor is required within that CBSA.

(1) The SO<sub>2</sub> monitoring site(s) required as a result of the calculated PWEI in each CBSA shall satisfy minimum monitoring requirements if the monitor is sited within the boundaries of the parent CBSA and is one of the following site types (as defined in section 1.1.1 of this appendix): population exposure, highest concentration, source impacts, general background, or regional transport. SO<sub>2</sub> monitors at NCore stations may satisfy minimum monitoring requirements if that monitor is located within a CBSA with minimally required monitors under this part. Any monitor that is sited outside of a CBSA with minimum monitoring requirements to assess the highest concentration resulting from the impact of significant sources or source categories existing within that CBSA shall be allowed to count towards minimum monitoring requirements for that CBSA.

**Table 5: TDEC-DAPC Interpretation of the PWEI SO<sub>2</sub> Monitoring Requirements**

CBSA AREA NAME	POP ESTIMATE 2025	2020 SO2 NEI Tons	PWEI 2023	PWEI 2024	PWEI 2025	SO2 Monitors Required
Chattanooga, TN-Ga	594,530	146	85	86	87	0
Clarksville, TN-KY	349,001	7842	2,670	2,713	2,737	0
Cleveland, TN	134,057	61	8	8	8	0
Jackson, TN	184,569	180	33	33	33	0
Johnson City, TN	216,416	30	6	6	6	0
Kingsport-Bristol-Bristol, TN-VA	314,834	4633	1,450	1,454	1,459	0
Knoxville, TN	968,137	1634	1,546	1,565	1,582	0
Memphis, TN-MS-AR	1,341,412	785	1,049	1,051	1,053	0
Morristown, TN	128,867	41	5	5	5	0
Nashville-Davidson-Murfreesboro-Franklin, TN	2,197,416	1814	3,814	3,901	3,986	0

\*NEI data not including mobile sources of SO<sub>2</sub>

4.4.3 *Regional Administrator Required Monitoring.* (a) The Regional Administrator may require additional SO<sub>2</sub> monitoring stations above the minimum number of monitors required in 4.4.2 of this part, where the minimum monitoring requirements are not sufficient to meet monitoring objectives. The Regional Administrator may require, at his/her discretion, additional monitors in situations where an area has the potential to have concentrations that may violate or contribute to the violation of the NAAQS, in areas impacted by sources which are not conducive to modeling, or in locations with susceptible and vulnerable populations, which are not monitored under the minimum monitoring provisions described above. The Regional Administrator and the

responsible State or local air monitoring agency shall work together to design and/or maintain the most appropriate SO<sub>2</sub> network to provide sufficient data to meet monitoring objectives.

4.4.4 SO<sub>2</sub> Monitoring Spatial Scales. (a) The appropriate spatial scales for SO<sub>2</sub> SLAMS monitors are the microscale, middle, neighborhood, and urban scales. Monitors sited at the microscale, middle, and neighborhood scales are suitable for determining maximum hourly concentrations for SO<sub>2</sub>. Monitors sited at urban scales are useful for identifying SO<sub>2</sub> transport, trends, and, if sited upwind of local sources, background concentrations.

4.4.5 *NCore Monitoring*. (a) SO<sub>2</sub> measurements are included within the NCore multipollutant site requirements as described in paragraph (3)(b) of this appendix. NCore-based SO<sub>2</sub> measurements are primarily used to characterize SO<sub>2</sub> trends and assist in understanding SO<sub>2</sub> transport across representative areas in urban or rural locations and are also used for comparison with the SO<sub>2</sub> NAAQS. SO<sub>2</sub> monitors at NCore sites that exist in CBSAs with minimum monitoring requirements per section 4.4.2 above shall be allowed to count towards those minimum monitoring requirements.

### **Lead Monitoring Network Requirements**

40 CFR 58 Subpart G, Appendix D to Part 58

4.5 *Lead (Pb) Design Criteria*. (a) State and, where appropriate, local agencies are required to conduct ambient air Pb monitoring near Pb sources which are expected to or have been shown to contribute to a maximum Pb concentration in ambient air in excess of the NAAQS, taking into account the logistics and potential for population exposure. At a minimum, there must be one source-oriented SLAMS site located to measure the maximum Pb concentration in ambient air resulting from each non-airport Pb source which emits 0.50 or more tons per year and from each airport which emits 1.0 or more tons per year based on either the most recent National Emission Inventory (<http://www.epa.gov/ttn/chief/eiinformation.html>) or other scientifically justifiable methods and data (such as improved emissions factors or site-specific data) taking into account logistics and the potential for population exposure.

(i) One monitor may be used to meet the requirement in paragraph 4.5(a) for all sources involved when the location of the maximum Pb concentration due to one Pb source is expected to also be impacted by Pb emissions from a nearby source (or multiple sources). This monitor must be sited, taking into account logistics and the potential for population exposure, where the Pb concentration from all sources combined is expected to be at its maximum.

(ii) The Regional Administrator may waive the requirement in paragraph 4.5(a) for monitoring near Pb sources if the State or, where appropriate, local agency can demonstrate the Pb source will not contribute to a maximum Pb concentration in ambient air in excess of 50 percent of the NAAQS (based on historical monitoring data, modeling, or other means). The waiver must be renewed once every 5 years as part of the network assessment required under § 58.10(d).

(iii) State and, where appropriate, local agencies are required to conduct ambient air Pb monitoring near each of the airports listed in Table D-3A for a period of 12 consecutive months commencing no later than December 27, 2011. Monitors shall be sited to measure the maximum Pb concentration in ambient air, taking into account logistics and the potential for population exposure, and shall use an approved Pb-TSP Federal Reference Method or Federal Equivalent Method. Any monitor that exceeds 50 percent of the Pb NAAQS on a rolling 3-month average (as determined according to 40 CFR part 50, Appendix R) shall become a required monitor under

paragraph 4.5(c) of this Appendix, and shall continue to monitor for Pb unless a waiver is granted allowing it to stop operating as allowed by the provisions in paragraph 4.5(a)(ii) of this appendix. Data collected shall be submitted to the Air Quality System database according to the requirements of 40 CFR part 58.16.

**PM<sub>2.5</sub> Monitoring Network Requirements**

40 CFR 58 Subpart G, Appendix D to Part 58

4.7.1 General Requirements. (a) State, and where applicable local, agencies must operate the minimum number of required PM<sub>2.5</sub> SLAMS sites listed in Table D-5 of this appendix. The NCore sites are expected to complement the PM<sub>2.5</sub> data collection that takes place at non-NCore SLAMS sites, and both types of sites can be used to meet the minimum PM<sub>2.5</sub> network requirements. Deviations from these PM<sub>2.5</sub> monitoring requirements must be approved by the EPA Regional Administrator.

**Table D-5 of Appendix D to Part 58—PM<sub>2.5</sub> Minimum Monitoring Requirements**

MSA population <sup>1, 2</sup>	Most recent 3-year design value ≥85% of any PM <sub>2.5</sub> NAAQS <sup>3</sup>	Most recent 3-year design value <85% of any PM <sub>2.5</sub> NAAQS <sup>3, 4</sup>
>1,000,000	3	2
500,000-1,000,000	2	1
50,000-<500,000 <sup>5</sup>	1	0

<sup>1</sup>Minimum monitoring requirements apply to the metropolitan statistical area (MSA).

<sup>2</sup>Population based on latest available census figures.

<sup>3</sup>The PM<sub>2.5</sub> National Ambient Air Quality Standards (NAAQS) levels and forms are defined in 40 CFR part 50.

<sup>4</sup>These minimum monitoring requirements apply in the absence of a design value.

<sup>5</sup>Metropolitan statistical areas (MSA) must contain an urbanized area of 50,000 or more population.

(b) Specific Design Criteria for PM<sub>2.5</sub>. The required monitoring stations or sites must be sited to represent area-wide air quality. These sites can include sites collocated at PAMS. These monitoring stations will typically be at neighborhood or urban-scale; however, micro-or middle-scale PM<sub>2.5</sub> monitoring sites that represent many such locations throughout a metropolitan area are considered to represent area-wide air quality.

(1) At least one monitoring station is to be sited at neighborhood or larger scale in an area of expected maximum concentration.

(2) For CBSAs with a population of 1,000,000 or more persons, at least one PM<sub>2.5</sub> monitor is to be collocated at a near-road NO<sub>2</sub> station required in section 4.3.2(a) of this appendix.

(3) For areas with additional required SLAMS, a monitoring station is to be sited in an area of poor air quality.

(4) Additional technical guidance for siting PM<sub>2.5</sub> monitors is provided in references 6 and 7 of this appendix.

(c) The most important spatial scale to effectively characterize the emissions of particulate matter from both mobile and stationary sources is the neighborhood scale for PM<sub>2.5</sub>. For purposes of establishing monitoring sites to represent large homogenous areas other than the above scales of representativeness and to characterize

regional transport, urban or regional scale sites would also be needed. Most PM<sub>2.5</sub> monitoring in urban areas should be representative of a neighborhood scale.

(1) Micro-scale. This scale would typify areas such as downtown street canyons and traffic corridors where the general public would be exposed to maximum concentrations from mobile sources. In some circumstances, the micro-scale is appropriate for particulate sites. SLAMS sites measured at the micro-scale level should, however, be limited to urban sites that are representative of long-term human exposure and of many such microenvironments in the area. In general, micro-scale particulate matter sites should be located near inhabited buildings or locations where the general public can be expected to be exposed to the concentration measured. Emissions from stationary sources such as primary and secondary smelters, power plants, and other large industrial processes may, under certain plume conditions, likewise result in high ground level concentrations at the micro-scale. In the latter case, the micro-scale would represent an area impacted by the plume with dimensions extending up to approximately 100 meters. Data collected at micro-scale sites provide information for evaluating and developing hot spot control measures.

(2) Middle scale —People moving through downtown areas, or living near major roadways, encounter particle concentrations that would be adequately characterized by this spatial scale. Thus, measurements of this type would be appropriate for the evaluation of possible short-term exposure public health effects of particulate matter pollution. In many situations, monitoring sites that are representative of microscale or middle-scale impacts are not unique and are representative of many similar situations. This can occur along traffic corridors or other locations in a residential district. In this case, one location is representative of a number of small-scale sites and is appropriate for evaluation of long-term or chronic effects. This scale also includes the characteristic concentrations for other areas with dimensions of a few hundred meters such as the parking lot and feeder streets associated with shopping centers, stadia, and office buildings.

(3) Neighborhood scale —Measurements in this category would represent conditions throughout some reasonably homogeneous urban sub-region with dimensions of a few kilometers and of generally more regular shape than the middle scale. Homogeneity refers to the particulate matter concentrations, as well as the land use and land surface characteristics. Much of the PM<sub>2.5</sub> exposures are expected to be associated with this scale of measurement. In some cases, a location carefully chosen to provide neighborhood scale data would represent the immediate neighborhood as well as neighborhoods of the same type in other parts of the city. PM<sub>2.5</sub> sites of this kind provide good information about trends and compliance with standards because they often represent conditions in areas where people commonly live and work for periods comparable to those specified in the NAAQS. In general, most PM<sub>2.5</sub> monitoring in urban areas should have this scale.

(4) Urban scale —This class of measurement would be used to characterize the particulate matter concentration over an entire metropolitan or rural area ranging in size from 4 to 50 kilometers. Such measurements would be useful for assessing trends in area-wide air quality, and hence, the effectiveness of large scale air pollution control strategies. Community-oriented PM<sub>2.5</sub> sites may have this scale.

(5) Regional scale —These measurements would characterize conditions over areas with dimensions of as much as hundreds of kilometers. As noted earlier, using representative conditions for an area implies some degree of homogeneity in that area. For this reason, regional scale measurements would be most applicable to sparsely populated areas. Data characteristics of this scale would provide information about larger scale processes of particulate matter emissions, losses and transport. PM2.5 transport contributes to elevated particulate concentrations and may affect multiple urban and State entities with large populations such as in the eastern United States. Development of effective pollution control strategies requires an understanding at regional geographical scales of the emission sources and atmospheric processes that are responsible for elevated PM2.5 levels and may also be associated with elevated O3 and regional haze.

4.7.2 Requirement for Continuous PM2.5 Monitoring. The State, or where appropriate, local agencies must operate continuous PM2.5 analyzers equal to at least one-half (round up) the minimum required sites listed in Table D-5 of this appendix. At least one required continuous analyzer in each MSA must be collocated with one of the required FRM/FEM/ARM monitors, unless at least one of the required FRM/FEM/ARM monitors is itself a continuous FEM or ARM monitor in which case no collocation requirement applies. State and local air monitoring agencies must use methodologies and quality assurance/quality control (QA/QC) procedures approved by the EPA Regional Administrator for these required continuous analyzers.

4.7.3 Requirement for PM2.5 Background and Transport Sites. Each State shall install and operate at least one PM2.5 site to monitor for regional background and at least one PM2.5 site to monitor regional transport. These monitoring sites may be at community-oriented sites and this requirement may be satisfied by a corresponding monitor in an area having similar air quality in another State. State and local air monitoring agencies must use methodologies and QA/QC procedures approved by the EPA Regional Administrator for these sites. Methods used at these sites may include non-federal reference method samplers such as IMPROVE or continuous PM2.5 monitors.

4.7.4 PM2.5 Chemical Speciation Site Requirements. Each State shall continue to conduct chemical speciation monitoring and analyses at sites designated to be part of the PM2.5 Speciation Trends Network (STN). The selection and modification of these STN sites must be approved by the Administrator. The PM2.5 chemical speciation urban trends sites shall include analysis for elements, selected anions and cations, and carbon. Samples must be collected using the monitoring methods and the sampling schedules approved by the Administrator. Chemical speciation is encouraged at additional sites where the chemically resolved data would be useful in developing State implementation plans and supporting atmospheric or health effects related studies.

### **PM<sub>10</sub> Monitoring Network Requirements**

4.6 Particulate Matter (PM<sub>10</sub>) Design Criteria.>(a) Table D-4 indicates the approximate number of permanent stations required in MSAs to characterize national and regional PM10 air quality trends and geographical patterns. The number of PM10 stations in areas where MSA populations exceed 1,000,000 must be in the range from 2 to 10 stations, while in low population urban areas, no more than two stations are required. A range of monitoring stations is specified in Table D-4 because sources of pollutants and local control efforts can vary from one part of the country to another and therefore, some flexibility is allowed in selecting the actual number of stations in any one locale. Modifications from these PM10 monitoring requirements must be approved by the Regional Administrator.

**TABLE D-4 OF APPENDIX D TO PART 58 - PM 10 MINIMUM MONITORING REQUIREMENTS (APPROXIMATE NUMBER OF STATIONS PER MSA) 1**

Population category	High concentration <sup>2</sup>	Medium concentration <sup>3</sup>	Low concentration <sup>4,5</sup>
>1,000,000	6-10	4-8	2-4
500,000-1,000,000	4-8	2-4	1-2
250,000-500,000	3-4	1-2	0-1
100,000-250,000	1-2	0-1	0

<sup>1</sup> Selection of urban areas and actual numbers of stations per area will be jointly determined by EPA and the State agency.

<sup>2</sup> High concentration areas are those for which ambient PM<sub>10</sub> data show ambient concentrations exceeding the PM 10 NAAQS by 20 percent or more.

<sup>3</sup> Medium concentration areas are those for which ambient PM<sub>10</sub> data show ambient concentrations exceeding 80 percent of the PM 10 NAAQS.

<sup>4</sup> Low concentration areas are those for which ambient PM<sub>10</sub> data show ambient concentrations less than 80 percent of the PM 10 NAAQS.

<sup>5</sup> These minimum monitoring requirements apply in the absence of a design value.

### Index reporting requirements

40 CFR 58 Subpart G, 58.50 Revised as of October 26, 2015.

58.50 Index reporting.

(a) The state or where applicable, local agency shall report to the general public on a daily basis through prominent notice an air quality index that complies with the requirements of Appendix G: Annual Site Evaluations to this part.

(b) Reporting is required for all individual MSA with a population exceeding 350,000.

(c) The population of a MSA for purposes of index reporting is the most recent decennial U.S. census population.

### NCore Monitoring Network Requirements and PM <sub>10-2.5</sub>

40 CFR 58 Subpart G, Appendix D to Part 58 Revised as of December 30, 2016

(a) Each State

(i.e. the fifty States, District of Columbia, Puerto Rico, and the Virgin Islands) is required to operate at least one NCore site. States may delegate this requirement to a local agency. States with many MSAs often also have multiple air sheds with unique characteristics and, often, elevated air pollution. These States include, at a minimum, California, Florida, Illinois, Michigan, New York, North Carolina, Ohio, Pennsylvania, and Texas. These

States are required to identify one to two additional NCore sites in order to account for their unique situations. These additional sites shall be located to avoid proximity to large emission sources. Any State or local agency can propose additional candidate NCore sites or modifications to these requirements for approval by the Administrator. The NCore locations should be leveraged with other multipollutant air monitoring sites including PAMS sites, National Air Toxics Trends Stations (NATTS) sites, CASTNET sites, and STN sites. Site leveraging includes using the same monitoring platform and equipment to meet the objectives of the variety of programs where possible and advantageous.

(b) The NCore sites must measure, at a minimum, PM<sub>2.5</sub> particle mass using continuous and integrated/filter-based samplers, speciated PM<sub>2.5</sub>, PM<sub>10-2.5</sub> particle mass, O<sub>3</sub>, SO<sub>2</sub>, CO, NO/NO<sub>y</sub>, wind speed, wind direction, relative humidity, and ambient temperature.

(1) Although the measurement of NO<sub>y</sub> is required in support of a number of monitoring objectives, available commercial instruments may indicate little difference in their measurement of NO<sub>y</sub> compared to the conventional measurement of NO<sub>x</sub>, particularly in areas with relatively fresh sources of nitrogen emissions. Therefore, in areas with negligible expected difference between NO<sub>y</sub> and NO<sub>x</sub> measured concentrations, the Administrator may allow for waivers that permit NO<sub>x</sub> monitoring to be substituted for the required NO<sub>y</sub> monitoring at applicable NCore sites.

(2) The EPA recognizes that, in some cases, the physical location of the NCore site may not be suitable for representative meteorological measurements due to the site's physical surroundings. It is also possible that nearby meteorological measurements may be able to fulfill this data need. In these cases, the requirement for meteorological monitoring can be waived by the Administrator.

40 CFR 58 Subpart G, Appendix D to Part 58 revised as of December 30, 2016

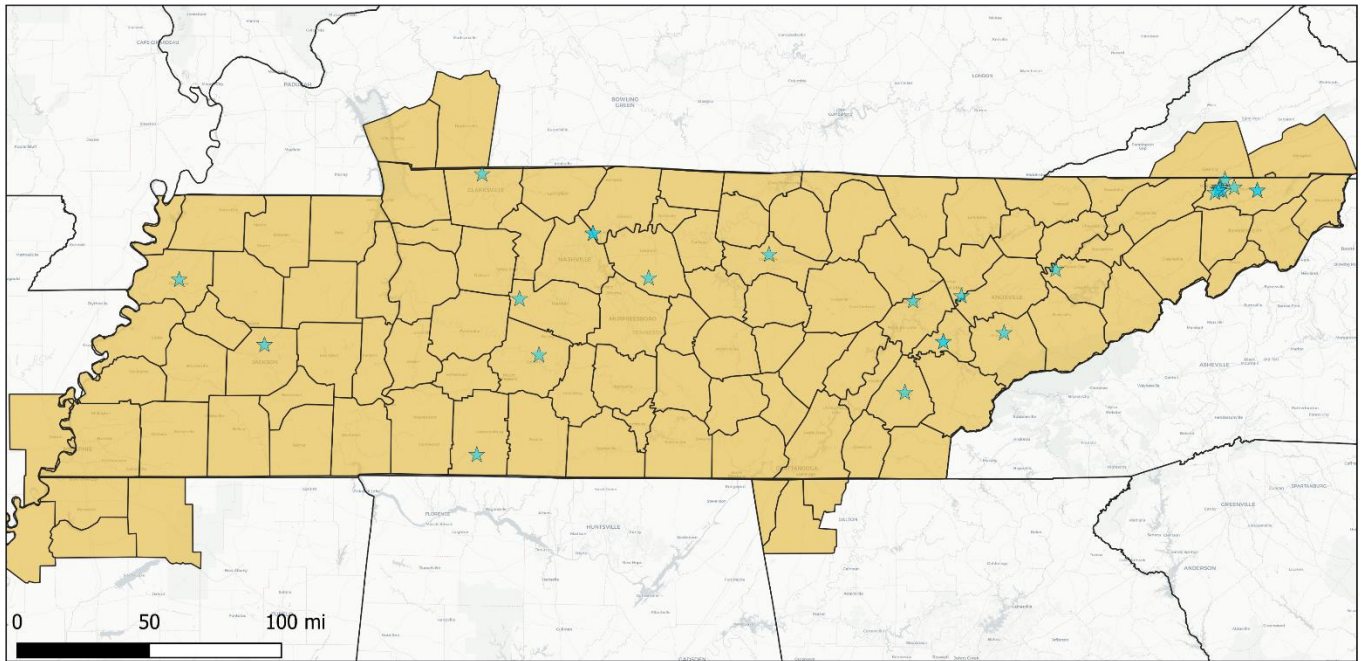
### **Coarse Particulate Matter (PM<sub>10-2.5</sub>) Design Criteria.**

4.8.1 General Monitoring Requirements. (a) The only required monitors for PM<sub>10-2.5</sub> are those required at NCore Stations.

(b) Although microscale monitoring may be appropriate in some circumstances, middle and neighborhood scale measurements are the most important station classifications for PM<sub>10-2.5</sub> to assess the variation in coarse particle concentrations that would be expected across populated areas that are in proximity to large emissions sources.

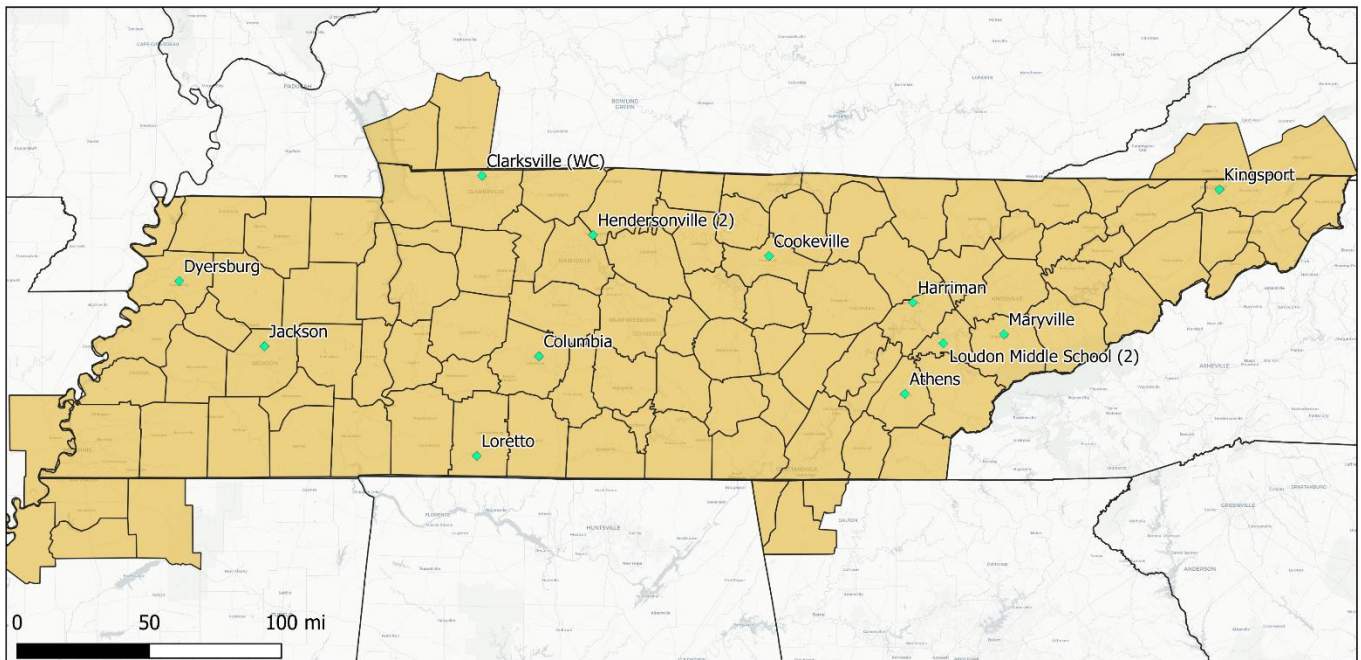
## Appendix D: TDEC-DAPC Monitor Maps

### All Monitoring Sites Operated by TDEC-DAPC and the National Park Service



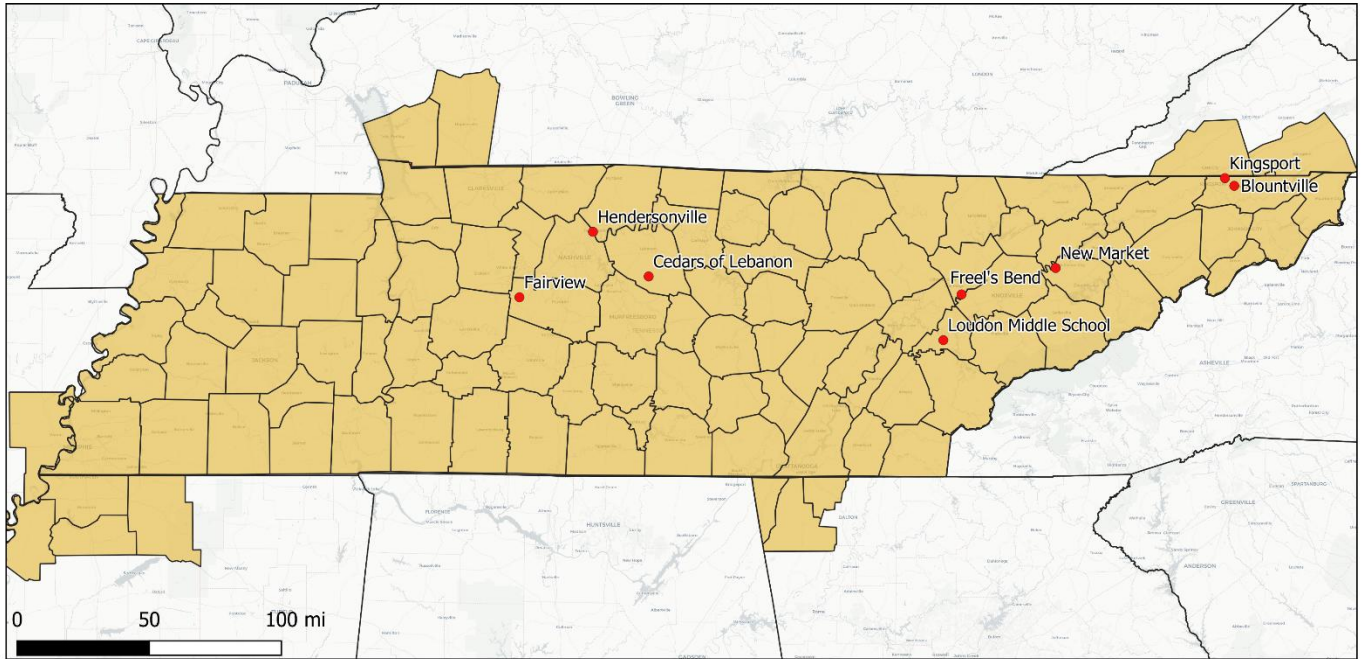
★ TDEC Monitor

### PM<sub>2.5</sub> Monitor Locations



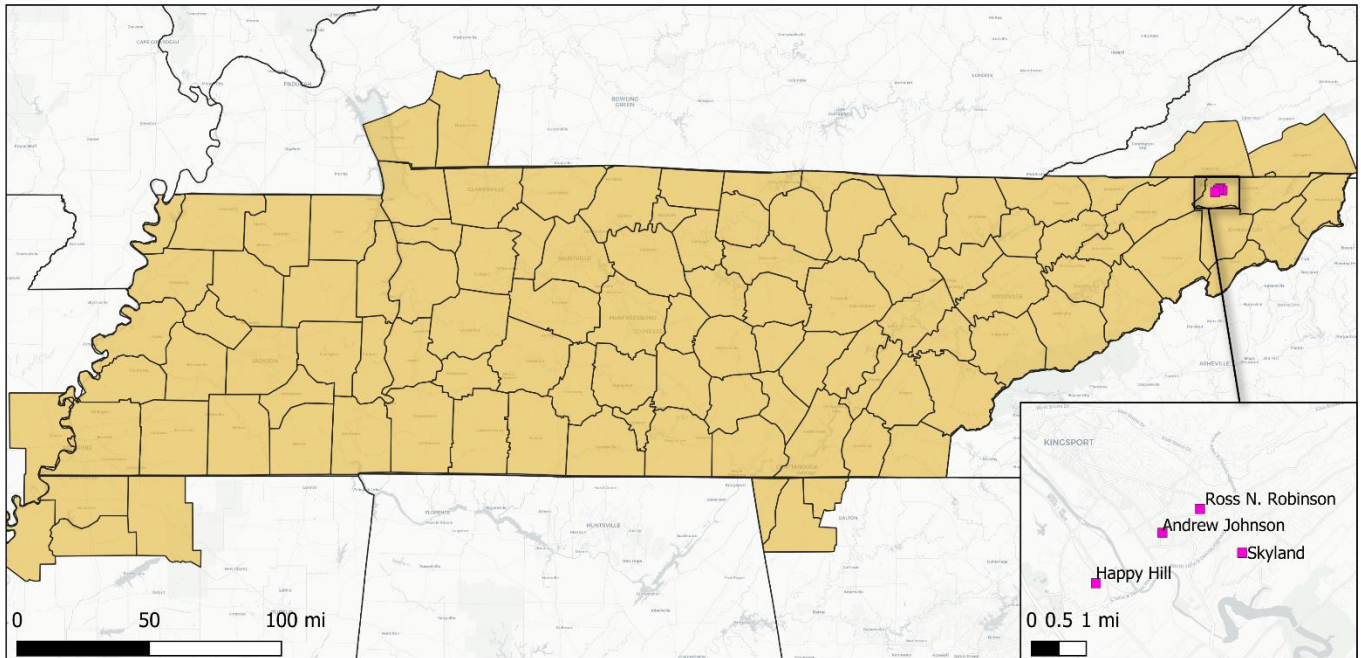
◆ PM<sub>2.5</sub> Monitors

### Ozone Monitor Locations



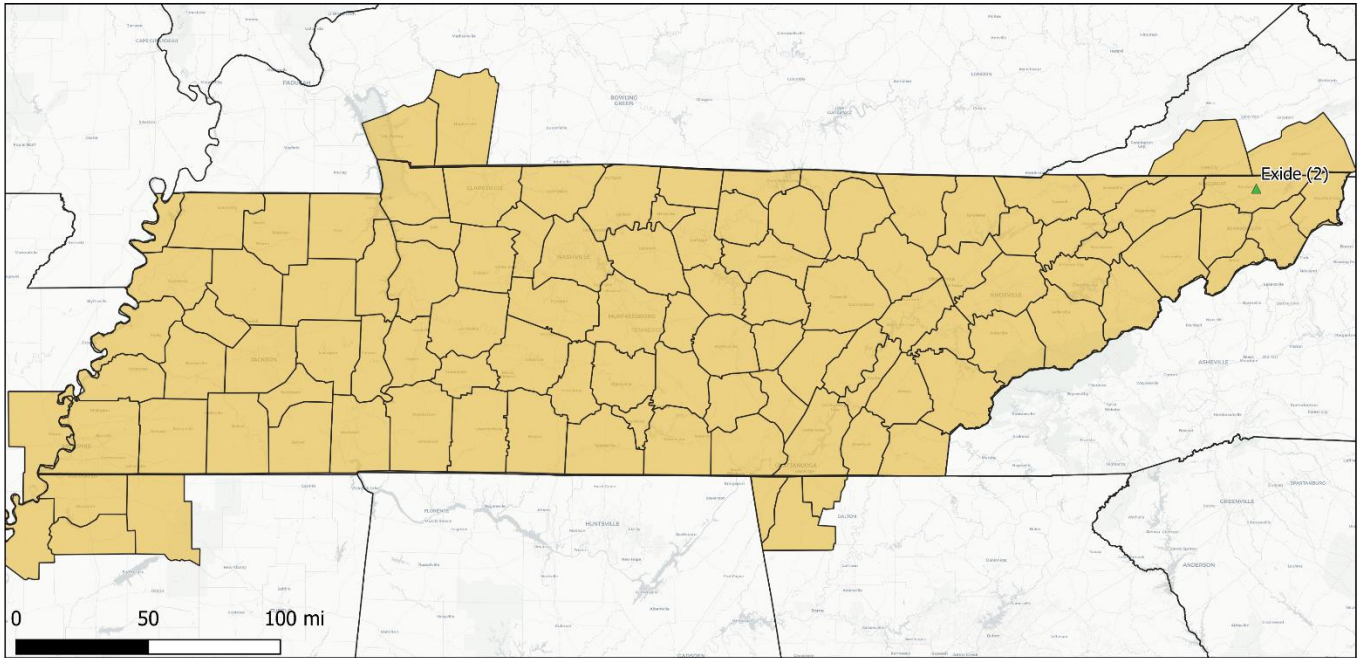
● Ozone Monitors

### SO<sub>2</sub> Monitor Locations



■ SO<sub>2</sub> Monitors

### Lead Monitor Locations



▲ Lead Monitors

## **Appendix E: Annual Monitoring Site Evaluations and Documentation**

2026 Tennessee monitoring site evaluation documentation can be found at TDEC-DAPC's Air Quality Monitoring & Forecasting website:

<https://www.tn.gov/environment/air/monitoring-forecasting.html>

# Appendix F: Tennessee 2025 Annual Ongoing Data Requirements Report

## Draft Tennessee 2025 Annual Ongoing Data Requirements Report

Annual Reporting of Emissions for  
TVA-Cumberland



Data Requirements Rule for the  
2010 1-Hour Sulfur Dioxide National Ambient Air Quality Standard

May 19, 2026

## TABLE OF CONTENTS

1.0 Purpose and Background.....	4
2.0 Technical Analysis.....	5
3.0 Public Inspection Period.....	6
4.0 Conclusions.....	7
ATTACHMENT.....	9

## LIST OF TABLES

### Annual Reporting of Emissions:

Table 1- TNDRR Areas and 2012-2014 Modeled Sources.....	4
Table 2- Actual SO <sub>2</sub> Emissions in Stewart County.....	5
Table 3- Modeled 2012-2014 SO <sub>2</sub> Emissions in Stewart County.....	6
Table 4- Total SO <sub>2</sub> Emissions Reductions in Stewart County.....	7

## 1.0 PURPOSE AND BACKGROUND

The Tennessee Department of Environment and Conservation Division of Air Pollution Control (TDEC APC) has prepared this report as the state's Annual Ongoing Data Requirements Report for the 2010 1-Hour Sulfur Dioxide (SO<sub>2</sub>) Primary National Ambient Air Quality Standard (NAAQS) as an appendix to its Annual Monitoring Network Plan. This report is intended to fulfill the annual reporting requirements of 40 CFR Part 51 Subpart BB, "Data Requirements Rule for Characterizing Air Quality for the Primary SO<sub>2</sub> NAAQS". The Annual Ongoing Data Requirements Report is due to the EPA on July 1 of each year to meet the reporting requirements in 40 CFR 51.1205 (b)<sup>1</sup>

"(b) *Modeled areas.* For any area where modeling of actual SO<sub>2</sub> emissions serve as the basis for designating such area as attainment for the 2010 SO<sub>2</sub> NAAQS, the air agency shall submit an annual report to the Environmental Protection Agency (EPA) Regional Administrator by July 1 of each year, either as a stand-alone document made available for public inspection, or as an appendix to its Annual Monitoring Network Plan (also due on July 1 each year under 40 CFR 58.10), that documents the annual SO<sub>2</sub> emissions of each applicable source in each such area and provides an assessment of the cause of any emissions increase from the previous year. The first report for each such area is due by July 1 of the calendar year after the effective date of the area's initial designation."

In Tennessee, the following original counties shown in Table 1 are the areas subject to the Annual Ongoing Data Requirements Report. The listed Tennessee Valley Authority (TVA) facilities are the sources that required 2012-2014 modeling within these *modeled areas*.

**Table 1: TN DRR Areas and 2012-2014 Modeled Sources**

County	Facility <sup>2</sup>	Maximum 1-hour SO <sub>2</sub> Impact <sup>3</sup>		Impact Distance km
		µg/m <sup>3</sup>	ppb	
Stewart	TVA - Cumberland Fossil Plant	121.8	46.5	3.19 (SW)
Humphreys	TVA - Johnsonville Fossil Plant	127.6	48.7	2.08 (E)
Shelby	TVA -Allen Fossil Plant	172.9	66.0	1.44 (N)

<sup>1</sup> 80 FR 51052, DRR for the 2010 1-Hour Sulfur Dioxide (SO<sub>2</sub>) Primary NAAQS, August 21, 2015.

<sup>2</sup> The modeling packages for these facilities were originally submitted to EPA Region 4 on the following dates and were submitted again on November 10, 2016, to EPA Region 4:

TVA - Cumberland Fossil (CUF) Plant: September 21, 2016 .

TVA - Johnsonville Fossil (JOF) Plant: October 12, 2016 .

TVA - Allen Fossil (ALF) Plant: November 2, 2016 .

<sup>3</sup> Maximum impacts are based on actual emissions for the affected units and permitted allowable emissions for the nearby sources, if any included.

## 2.0 TECHNICAL ANALYSIS

On January 13, 2017<sup>4</sup>, TDEC APC submitted a letter to the U.S. Environmental Protection Agency (EPA) requesting that Humphreys, Shelby and Stewart Counties in Tennessee be designated as attainment/unclassifiable for the 2010 SO<sub>2</sub> NAAQS based on TDEC APC's analysis, performed in accordance with EPA's technical assessment guidance, regarding the air quality surrounding the TVA plants and the rest of these counties. The air quality analyses were based on modeling of actual SO<sub>2</sub> emissions (2012-2014) from sources in and around these counties. On January 9, 2018, U.S. EPA designated these three counties as attainment/unclassifiable<sup>5</sup> for the 2010 SO<sub>2</sub> NAAQS. These areas are subject to the ongoing verification requirements under 40 CFR 51.1205(b), and TDEC APC is submitting this Annual Ongoing Data Requirements Report to meet the reporting requirements for these *modeled areas*. Because TVA plants in Humphreys (TVA-Johnsonville) and Shelby (TVA-Allen) counties were exempted from further annual reporting of actual emissions based on 2019-2021 exemption modeling demonstrations, ongoing annual emissions analysis is only required for TVA-Cumberland in Stewart County.

Per 40 CFR 51.1205 (b), TDEC APC is required to document the annual SO<sub>2</sub> emissions of each applicable source in the *modeled areas* (only TVA Cumberland). Table 2 lists TVA Cumberland's annual actual SO<sub>2</sub> emissions in tons per year from the original 2012-2014 period and the most recent 2023-2025 period. All emissions data was obtained from the Tennessee Emissions Inventory Program and compared to EPA's Clean Air Markets Program Division (CAMPD) Acid Rain Program (ARP) database. TVA Cumberland's 2012-2025 emissions are presented in the Attachment to this document.

**Table 2. Actual SO<sub>2</sub> Emissions in Stewart County for TVA DRR Sources**

Area	Modeled Source (Facility)	TVA Actual SO <sub>2</sub> Emissions from TuEIP (tons/year)					
		2012	2013	2014	2023	2024	2025
Stewart County	TVA - Cumberland Fossil Plant (81-0011)	10,101	7,962	9,396	4,075	4,600	5,210

The actual modeled emissions for the DRR 2012-2014 modeling are shown in Table 3 for TVA Cumberland.

<sup>4</sup> This letter addresses revisions to the May 26, 2011, letter in revising Tennessee's sulfur dioxide designation recommendations for sources subject to the Data Requirements Rule for the 2010 SO<sub>2</sub> NAAQS.

<sup>5</sup> Federal/Register Notice Published January 9, 2018 [83 FR 1098, pages 1158-1159].

**Table 3. Modeled 2012-2014 SO<sub>2</sub> Emissions in Stewart County for TVA Sources**

Area	Modeled Source (Facility ID)	TVA Actual SO <sub>2</sub> Emissions (tons/year)			Max-Modeled Design Value (ppb)
		2012	2013	2014	2012-2014
Stewart County	TVA - Cumberland Fossil Plant (81-0011)	10,103	7,964	9,396	46.5

**NOTE:**

<sup>(a)</sup> SO<sub>2</sub> Hourly NAAQS = 75 ppb.

<sup>(b)</sup> TVA Cumberland two boilers were modeled only, and no other nearby sources included.

The total reduction in SO<sub>2</sub> emissions for TVA Cumberland between the modeled 2012-2014 period and the latest 2023-2025 period are shown in Table 4..

**Table 4. Total SO<sub>2</sub> Emissions Reductions in Stewart County for TVA DRR Sources (2012-2014 vs. 2023-2025)**

Area	Modeled Source (Facility ID)	TVA Actual SO <sub>2</sub> Emissions (tons)		Emissions Reductions (tons)
		2012-2014 Total (From Table 3)	2023-2025 Total (From Table 2)	
Stewart County	TVA - Cumberland Fossil Plant (81-0011)	27,463	13,885	-13,578

Table 2 shows that the 2025 annual emissions from TVA Cumberland increased by 610 tons compared to the 2024 emissions. This increase resulted from a fire that occurred on February 6, 2025, at the Coal Unit #2 scrubber unit. The incident caused a complete shutdown of one of the three scrubber modules, and operations have since continued with only two modules online. The resulting reduction in scrubber capacity directly contributed to the increase of 610 tons in SO<sub>2</sub> emissions for the year. Despite this increase, the 2025 emissions remain lower than those recorded during any of the years in the 3-year period included in the initial Data Requirements Reporting modeling analysis (i.e., 2012–2014), as shown in Table 3. Additionally, there is a total SO<sub>2</sub> emissions reduction of 13,578 tpy between the modeled 2012-2014 period and the latest 2023-2025 period as shown in Table 4 and a reduction of 571 tons from the previous 2022-2024 period; therefore, no additional modeling analysis is needed. Currently, TVA is planning to keep the two coal-fired boilers (CUF unit 1 and CUF unit 2) operational with no plans to retire them by December 31, 2028.

### **3.0 PUBLIC INSPECTION PERIOD**

As required in 40 CFR 51.1205, TDEC APC has made this report as an appendix F to its Annual Monitoring Network Plan.

### **4.0 CONCLUSIONS**

This submittal satisfies the DRR annual reporting and verification of emissions for the year 2025 as demonstrated with the latest 2023-2025 emissions for the TVA DRR sources in TN. Namely: TVA-Cumberland.

ATTACHMENT

**TVA-Cumberland SO2 Actual Emissions 2012-2025**

TVA Cumberland Actual SO2 Emissions (Tons/Year)														
2012	2013	2014	2015	2016	2017	2018	2019	2020	2021	2022	2023	2024	2025	
10,101	7,962	9,306	8,849	10,123	6,650	7,408	7,209	7,178	8,929	5,781	4,075	4,600	5,210	