

Tennessee School Letter Grades 101

What is the School Letter Grade Rating System?

In 2016, the Tennessee legislature passed a [law](#) requiring the Tennessee Department of Education (the department) to create a rating system that annually assigns schools with an A-F letter grade to help the public easily understand how our schools are doing. Due to implementation delays including testing administration issues and the COVID-19 pandemic, Tennessee is assigning letter grades to schools for the first time this year.

How did the department approach implementing this law?

To hear input from educators, parents, community members, and other stakeholders about the letter grade measures and weights, department leaders traveled across the state to host Town Halls, meetings with district superintendents, and additional stakeholder conversations. The department collected nearly 300 comments from Tennesseans during the public comment period.

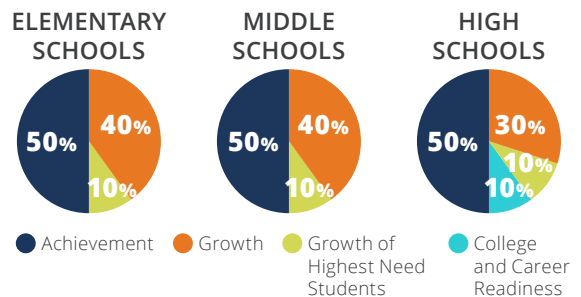
How are School Letter Grades determined?

There are several factors that determine school letter grades. These include student achievement and academic growth measures for all schools, as well as a measure of college and career readiness just for high schools.

- ▶ **Student achievement** is an indicator of how well all the students in your school know the skills required for their grade level as measured by the state TCAP test.
- ▶ **Student academic growth** is an indicator of how well the students in your school are doing, compared to their peers across the state.
- ▶ The letter grade includes two measures for growth. The first academic growth score is for the growth of all students. The second measures the **growth of the school's highest need students**—those who rank in the school's bottom 25% of students based on achievement— which emphasizes the need for schools to focus on supporting these students.
- ▶ **College and career readiness** is included only for letter grades for high schools and is based on how many graduating students succeed on measures like the ACT, college credit exams or opportunities, industry credentials, and military readiness.

How are these components weighted in the letter grade calculation?

Schools will receive an indicator score for each of the key components, ranging from levels 1-5. Each indicator score will be multiplied by a weight based off the grade band to create a total score, which will then be used to determine the school's letter grade.



Now that my school has a Letter Grade, what can I do?

Everyone can play a role in supporting the success of our students and the success of our schools. Engage with your local school by talking to your student's teachers or principal about how to support student learning, and check out these additional helpful resources:

- ▶ [5 Things Parents Need to Know about A-F Letter Grades](#)
- ▶ [Best For ALL Central](#)
- ▶ The [TCAP Family Portal](#) and [TCAP Educator Portal](#)



What are the state's next steps?

The department is committed to reviewing the implementation of the letter grade rating system and continuing to gather feedback to inform the system, which may evolve over time as student outcomes improve. Anytime, you can send your thoughts or suggestions to schoollettergrades@tnedu.gov.